



STORMWATER CONDITION ASSESSMENT

CURRENT STORMWATER ISSUES



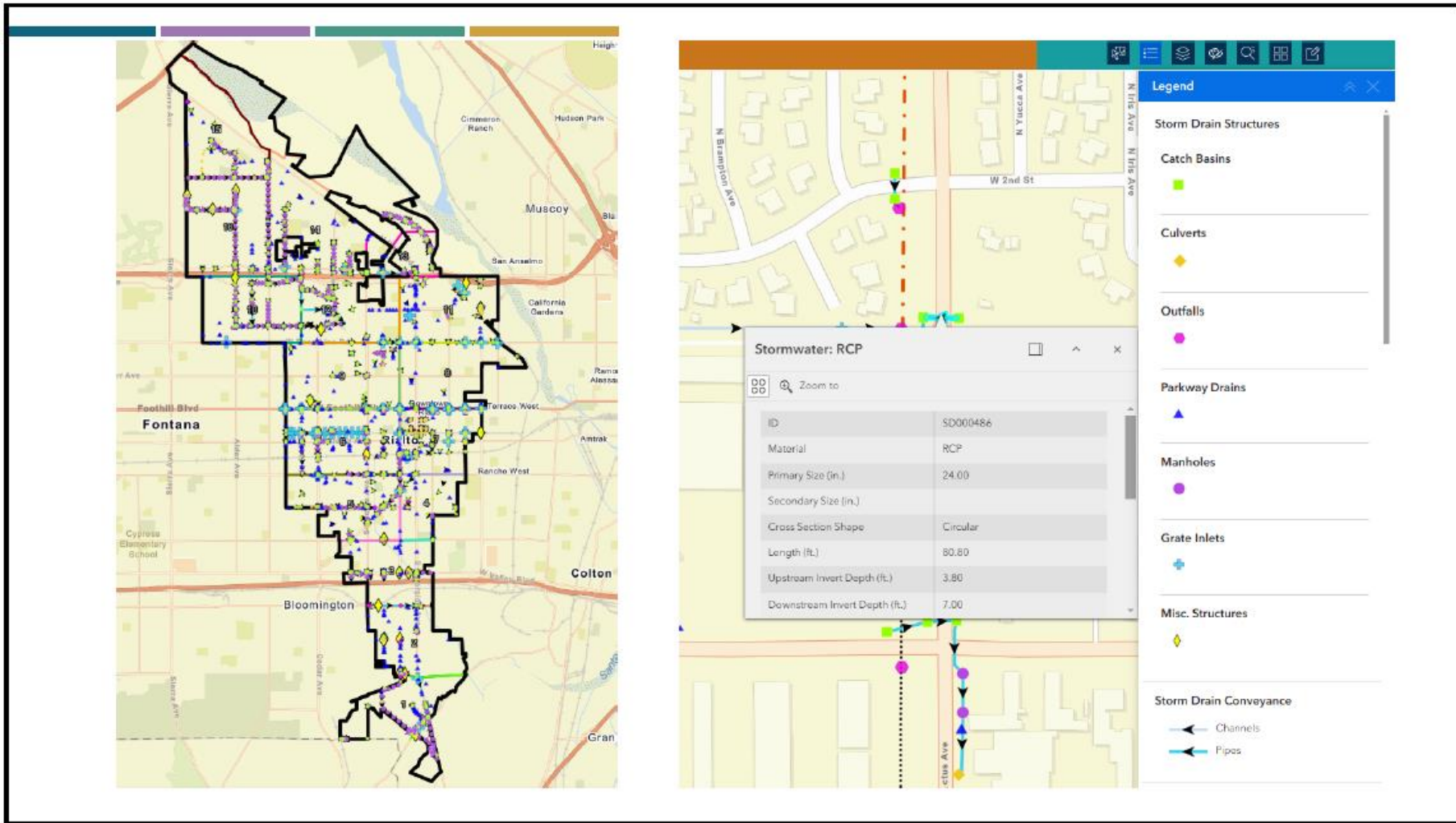
CURRENT STORMWATER ISSUES



STORMWATER ASSET INVENTORY COMPLETED

	Storm Drain Structures (Catch Basins, Culverts, Outfalls, Parkway Drains, Manholes, Grate Inlets, Miscellaneous Structures)	Storm Drain Conveyance (Pipes, Channels, Ditches)
Total	1773	40.8 miles
Previously Documented (As-builts, excel inventory, GIS inventory, Master Plan)	900	30.3 miles
Discovered in Field	873	10.5 miles

STORMWATER INVENTORY DATABASE



NEXT STEPS

**STORMWATER
CONDITION
ASSESSMENT**

**ASSET MANAGEMENT
SYSTEM FOR
MAINTENANCE AND
CAPITAL
IMPROVEMENTS**

STORMWATER CONDITION ASSESSMENT

1. DETERMINE CURRENT STATE OF CITY'S STORMWATER INFRASTRUCTURE
2. DETERMINE REMAINING USEFUL INFRASTRUCTURE LIFE
3. IDENTIFY CRITICAL INFRASTRUCTURE COMPONENTS REQUIRING IMMEDIATE CAPITAL IMPROVEMENT
4. PREVENT COSTLY EMERGENCY REPAIRS
5. MINIMIZE MAINTENANCE AND CAPITAL EXPENSES

FUTURE STORMWATER ASSET MANAGEMENT SYSTEM

1

1. OPTIMIZE
PERFORMANCE AND
LONGEVITY OF
STORMWATER
INFRASTRUCTURE

2

2. REDUCE
OPERATIONAL COSTS

3

3. MINIMIZE RISK OF
INFRASTRUCTURE
FAILURES

4

4. MAINTAIN
COMMITMENT TO
PROTECTING PUBLIC
HEALTH AND SAFETY



THANK YOU