

City of Rialto

*Council Chambers
150 S. Palm Ave.
Rialto, CA 92376*



Regular Meeting - Final

Tuesday, May 20, 2025

REGULAR MEETING - 6:00 P.M.

Rialto City Hall, Council Chambers, 150 S. Palm Ave. Rialto CA 92376

Utilities Commission

*Chairperson Barbara Rickman
Commissioner Kevin C. Kobbe
Commissioner James M. Shields*

In compliance with the Americans with Disabilities Act, if you need special assistance to participate in this meeting, please contact the Public Works Department at (909) 820-2602. Notification 48-hours prior to the meeting will enable the City to make reasonable arrangements to ensure accessibility to this meeting [28 CFR 35.102-35.104 ADA Title II].

Members of the public are given an opportunity to speak on any listed agenda items. Please notify the Utilities Division if you wish to do so. All agendas are posted in the City Hall Administration Building (150 South Palm Avenue, Rialto, CA 92376) at least 72-hours in advance of the meeting. Copies of the staff reports relating to each item on the agenda are on file in the Utilities Division. Please call (909) 421-4907 to inquire about any items described on the agenda.

Based upon the open meeting laws (the Brown Act), additional items may be added to the agenda and acted upon by the Utilities Commission only if it is considered to be a "subsequent need" or "emergency item" and is added by a two-thirds vote. Matters raised under Oral Communications may not be acted upon at that meeting other than as provided above.

CALL TO ORDER

ROLL CALL

Chairperson Barbara Rickman, Commissioner Kevin C. Kobbe, Commissioner James M. Shields

PLEDGE OF ALLEGIANCE

MOMENT OF SILENCE/INVOCATION

APPROVAL OF MINUTES

[UC-25-0344](#) Approval of Meeting Minutes for Regular Meeting of April 15, 2025.

Attachments: [Minutes 4-15-25](#)

ORAL COMMUNICATIONS

NEW BUSINESS

[UC-25-0350](#) Municipal Solid Waste Collection, Recycling, Organics, and Disposal Rates for Fiscal Year 2025/2026.

RECOMMENDATION

Staff Request Utilities Commission to Recommend that City Council Approve Municipal Solid Waste Collection, Recycling, and Disposal Service Rates for Fiscal Year 2025/2026, Effective July 1, 2025.

Attachments: [Attachment 1 - 2025 Rialto Waste Rates.pdf](#)

[City of Rialto Utilities Commission - Rate Adjustment 2025.pptx](#)

[UC-25-0351](#) Monthly Activity Report for City of Rialto Waste Management Services

[UC-25-0345](#) Veolia's Monthly Operations Report - May 2025 (Reporting period March 2025).

Attachments: [Veolia Monthly Operation Report Reporting Period March 2025 MAY REPORT](#)

OLD BUSINESS

[UC-25-0347](#) To-Do List.

[UC-25-0346](#) Previous Discussion Update

UTILITIES MANAGER'S UPDATES

[UC-25-0349](#) Utilities Director Update

Updates:

- 1) The City renewed the Marketing Agreement with Service Line Warranty of America (SLWA), with a contract extension through June 30, 2027.

COMMISSIONER REPORTS

ADJOURNMENT



City of Rialto

Legislation Text

File #: UC-25-0344, **Version:** 1, **Agenda #:**

For Utilities Commission Meeting May 20, 2025

TO: Honorable Chairperson and Commission

APPROVAL: John Rossi, Interim Utilities Director

FROM: Nicole Hemmans, Senior Administrative Analyst

Approval of Meeting Minutes for Regular Meeting of April 15, 2025.



CITY OF RIALTO
REGULAR MEETING OF THE UTILITIES COMMISSION
April 15, 2025 - 6:00 P.M.
MINUTES

The Regular meeting of the Utilities Commission of the City of Rialto was held in the Civic Center Council Chambers located at 150 S. Palm Avenue, Rialto, California 92376, on Tuesday, April 15, 2025.

o0o

This meeting was in accordance with the provision of the **Government Code §54956** of the State of California.

o0o

CALL TO ORDER

Chair Barbara Rickman called the meeting to order at 6:00 p.m.

o0o

ROLL CALL

The roll call was taken by Nicole Hemmans, Senior Administrative Analyst.

Present:

Chair Barbara Rickman
Commissioner James M. Shields
Commissioner Kevin C. Kobbe

Absent:

None.

City staff present:

John Rossi, Interim Utilities Director
Amy Crow, Administrative Analyst
Nicole Hemmans, Senior Administrative Analyst
Robert Khuu, Assistant City Attorney

Also present:

Robert Lee, Customer Service Manager – RWS/Veolia
Andrew Coleman, Field Operations Supervisor – RWS/Veolia
Jason Howard, CIP Project Engineer – RWS/Veolia
Frank Garza, Wastewater Chief Plant Operator – RWS/Veolia

o0o

PLEDGE OF ALLEGIANCE

Chair Barbara Rickman led the Pledge of Allegiance.

o0o

**MOMENT OF SILENCE/
INVOCATION**

Nicole Hemmans led the invocation.

o0o

APPROVAL OF MINUTES

Regular Meeting of April 15, 2025.

Chair Rickman asked if there were any comments pertaining to the minutes.

- ◆ None.

Action

- ◆ Commissioner Kobbe made a motion to approve.
- ◆ Commissioner Shields seconded.
- ◆ All in favor.
- ◆ Motion passed.

o0o

ORAL COMMUNICATIONS

Chair Rickman asked if there was oral communication from the audience of items not on the agenda.

- ◆ None.

o0o

NEW BUSINESS ITEMS

UC-25-0287

Monthly activity report for City of Rialto Waste Management Services. (RECEIVE AND FILE)

Amy Crow went over the Monthly Waste Management Report for the month of April 2025. (March 2025 Reporting Period).

Questions & Comments

- ◆ None

o0o

UC-25-0279

Veolia's Operations and Maintenance Monthly Report (RECEIVE AND FILE)

Receive and file the Monthly Operations Report from Veolia for the month of April 2025 (February 2025 Reporting Period).

Customer Service update provided by Robert Lee:

Questions & Comments

- ◆ Chair Rickman asked what caused the consumption to increase to 57.3% in February from 25.7% the month before, when there were fewer days in February than the month before.
 - Many factors affect water consumption from month to month, which may cause a month with fewer days to have more consumption than a month with more days. Sometimes it is due

to the timing of the billing cycle. Other factors can be related to the impacts of rainfall. Mr. Lee will provide an addendum at the next meeting to show where the water is going.

Water update provided by Andrew Coleman:
Questions & Comments

- ◆ None

Wastewater update provided by Frank Garza:
Questions & Comments

- ◆ None

CIP update provided by Jason Brandon:
Questions & Comments

- ◆ None.

o0o

OLD BUSINESS

UC-25-0281

Previous Discussion

There were no items for discussion.

o0o

UC-25-0280

To-Do List

No agenda items were posted for future discussion.

o0o

**UTILITIES DIRECTOR
UPDATES**

UC-25-0282

Utilities Director Update

Interim Utilities Director John Rossi provided an update to the commissioners on the following items:

Utilities Director Update:

- 1) Final Construction Work Authorization (FCWA) for Well City3A
- 2) RFP for Rate Consultant

Questions & Comments:

- ◆ Who, with RWS/Veolia, will fulfill the obligation of attending the Utilities Commission meeting as outlined in section 5.1(p) of the Concession agreement.
 - John Rossi will provide an update on who will be replacing RWS/Veolia's attendance roll at the Utilities Commission meeting after the retirement of Rolf Olemutz.

o0o

COMMISSIONER REPORTS

There were no Commissioner Reports.

o0o

ADJOURNMENT

Action

- ◆ Commissioner Shields made a motion to adjourn.
- ◆ Commissioner Kobbe seconded.
- ◆ All in favor.
- ◆ Motion carried.

- ◆ Meeting adjourned at 6:26 p.m.



City of Rialto

Legislation Text

File #: UC-25-0350, **Version:** 1, **Agenda #:**

For Utilities Commission Meeting [May 20, 2025]

TO: Honorable Utilities Commission Members

APPROVAL: John Rossi, Interim Utilities Director

FROM: Tim Sullivan, Assistant City Manager

Municipal Solid Waste Collection, Recycling, Organics, and Disposal Rates for Fiscal Year 2025/2026.

RECOMMENDATION

Staff Request Utilities Commission to Recommend that City Council Approve Municipal Solid Waste Collection, Recycling, and Disposal Service Rates for Fiscal Year 2025/2026, Effective July 1, 2025.

BACKGROUND

Burrtec Franchise Agreement and Refuse Collection Rates

On April 16, 1996, the City Council approved a Franchise Agreement with Burrtec Waste Industries, Inc. ("Burrtec," formerly EDCO Disposal Corporation) for municipal refuse/recycling collection and disposal services. In accordance with the Franchise Agreement, an allowance is made for adjustment of rates to reflect changes in the cost of doing business, as measured by fluctuations in the Consumer Price Index (CPI), published by the U.S. Department of Labor, Bureau of Labor Statistics, for All items in Riverside-San Bernardino-Ontario, CA, all urban consumers, not seasonally adjusted and applicable disposal costs.

On November 5, 1996, the people of the state of California voted in favor of Proposition 218, the "Right to Vote on Taxes Act." Proposition 218 added Articles 13C and 13D to the California Constitution, implementing restrictions on methods by which local governments can create or increase taxes, fees, and charges without taxpayer consent. Specifically, Proposition 218 requires the City to provide certain notifications of new or increased assessments, charges, and user fees, and in certain cases, requires a balloting and election of property owners prior to implementing any new or increased assessments, charges, and user fees.

Pursuant to Article 13D of the California Constitution, (Article 13D), a "fee" or "charge" means any levy other than an ad valorem tax, a special tax, or an assessment imposed by an agency upon a parcel or upon a person as an incident of property ownership, including a user fee or charge for a property related service. "Property-related service" means a public service having a direct relationship to property ownership. Section 3 of Article 13D allows the City to assess a fee or charge for property-related services upon any person as an incident of property ownership. Pursuant to § 6 of Article 13D, the City must follow prescribed procedures for imposing or increasing any fee or charge for property-related services.

In 1997, the California Legislature approved the "Proposition 218 Omnibus Implementation Act",

adding California Government Code §§ 53750-53758. This Act incorporated regulations necessary to implement the intention of Proposition 218, to ensure local government followed the appropriate process to establish new or increase existing assessments, charges, and user fees. Of importance, California Government Code § 53750 clarified that an “increase” as applied to a property-related fee or charge does not occur when the increase “adjusts the amount of a tax or fee or charge in accordance with a schedule of adjustments, including a clearly defined formula for inflation adjustment that was adopted by the agency prior to November 6, 1996.” Since the City’s Franchise Agreement with Burrtec was approved before November 6, 1996, the City is empowered to annually increase and adjust rates and charges for refuse collection services.

The California Government Code § 53756 allows an agency providing refuse collection services to adopt a schedule of fees or charges authorizing automatic adjustments that pass-through adjustments for inflation if it adopts the schedule of fees or charges for a property-related service for a period not to exceed five years pursuant to the California Government Code § 53755.

On June 27, 2023, the City Council conducted a Public Hearing in accordance with Proposition 218 procedures and adopted Resolution No. 8109, approving the adoption of the Four-Year Municipal Solid Waste Collection, Recycling, Organics, and Disposal Service Rates for Fiscal Years 2023/2024 through 2026/2027. These rates incorporated a new Mixed Organics Waste (Food Waste) Recycling component.

ANALYSIS/DISCUSSION

The proposed rates for the 2025/2026 Fiscal Year are included in **Attachment 1**, and the following tables are a sample of the most common customer rates.

Proposed Residential Rates

The proposed 2025/2026 residential rates are identified in **Table 1** below.

Table 1
Residential Rates

Monthly Charge			
Service Level	Current Rate	Proposed 2025	Amount Change
60 Gallon Tax Roll	\$ 33.88	\$ 35.87	\$ 1.99
40 Gallon Tax Roll	\$ 33.11	\$ 34.18	\$ 1.07
Senior Tax Roll	\$ 28.14	\$ 29.05	\$ 0.91

****Note: Rates Do NOT Exceed Prop 218 Notice For Year 2025-2026**

Proposed Commercial Rates

Fiscal Year 2025/2026 rates for Commercial customers are recommended to include the following components:

- CPI adjustment for the FY 2025/2026 Commercial Hauler Fee is equal to 2.61%.
- A decrease in the recycling fees from \$4.28/yard to \$4.15/yard.
- Decreases in the Food Waste recycling fees from \$1.41/yard to \$1.06/yard.
- No change in the Multi-Family Bulky Program from \$1.68/yard to \$1.68/yard.
- No change to the Windy Day Tonnage charge from \$0.00/yard to \$0.00/yard.
- No change to the WDA solid waste disposal rate (will remain at \$42.07 per ton).

Table 2 below shows the most common Commercial Service levels with the various Fiscal Year rates.

**Table 2
Commercial Rates**

Monthly Charge			
Service Level	Current Rate	Proposed 2025	Amount Change
3 Yard Trash Bin (Includes Recycling)	\$ 240.19	\$ 250.24	\$ 10.05
65 Gallon Food Waste Barrel	\$ 46.74	\$ 46.74	\$ -
Multi-Family 3 Yard Bin (Includes Bulky Item Collection)	\$ 280.62	\$ 280.62	\$ -

****Note:** Rates Do NOT Exceed Prop 218 Notice For Year 2025-2026

Solid Waste Subcommittee Review

At its April 10, 2025, meeting, the Solid Waste Subcommittee reviewed the proposed rate adjustment.

ENVIRONMENTAL IMPACT

This is not a "Project" as defined by the California Environmental Quality Act (CEQA). Pursuant to Section 15378(a), a "Project" means the whole of an action, which has a potential for resulting in either a direct physical change in the environment, or a reasonably foreseeable indirect physical change in the environment. According to Section 15378(b), a Project does not include: (5) Organizational or administrative activities of governments that will not result in direct or indirect physical changes in the environment.

GENERAL PLAN CONSISTENCY

The City of Rialto General Plan establishes various guiding principles, goals, and objectives through which the City looks to improve the community and protect the quality of life for our residents. This action is consistent with Guiding Principle 3A in the General Plan:

Our City government will lead by example, and will operate in an open, transparent, and responsive manner that meets the needs of the citizens and is a good place to do business.

Approval of this action also complies with the following City of Rialto General Plan Goals and Policies:

Goal 2-34: Achieve waste recycling levels that meet or exceed State mandates. Achieve maximum waste recycling in all sectors of the community: residential, commercial, industrial, institutional, and construction.

Policy 2-34.1: Develop programs that promote reuse and recycling throughout the community.

Policy 2-34.2: Utilize source reduction, recycling, and other appropriate measures to reduce the amount of solid waste generated in Rialto that is disposed of in landfills.

Goal 3-10: Minimize the volume of solid waste that enters local and regional landfills.

Policy 3-10.1: Encourage additional recycling in all sectors of the community.

Policy 3-10.4: Continue to educate the community regarding the benefits of solid waste diversion and recycling, and maintain programs that make it easy for all residents and businesses to work toward City waste reduction objectives.

Goal 5-4: Protect the health and welfare of the public, environment, and economy by providing for the safe and responsible management of hazardous materials and wastes.

Policy 5-4.2: Coordinate City enforcement efforts with San Bernardino County, the California Department of Health Services, the Regional Water Quality Control Boards, and the Air Quality Management District, for the management and disposal of hazardous wastes.

Goal 5-5: Minimize the generation of hazardous waste in Rialto.

Policy 5-5.1: Prohibit unauthorized disposal of household hazardous waste in the Mid Valley County Landfill.

Policy 5-5.2: Encourage and promote practices that will reduce the use of hazardous materials and the generation of hazardous waste at their source, recycle the remaining hazardous wastes for reuse, and treat those wastes which cannot be reduced at the source or recycled.

Goal 5-6: Educate the public and private businesses about proper disposal of hazardous waste.

Policy 5-6.1: Conduct regularly scheduled household hazardous waste roundup and disposal events.

LEGAL REVIEW

The City Attorney's Office has reviewed the staff report.

FINANCIAL IMPACT

Operating Budget Impact

Refuse revenue is collected by Burrtec Waste Industries. The City derives revenues from the adopted rates including Household Hazardous Waste (HHW) fees and AB 939 revenues, which the City uses to fund the Household Hazardous Waste programs and for public education on recycling and protection of the environment.

Revenues presented with changes in the Residential and Commercial fee amounts are estimated as follows:

- AB 939 funds are estimated to be \$302,145/year and will be credited to Account No. 22127040-47544.
- HHW funds are estimated to be \$308,197/year and will be credited to Account No. 22127041-47542.
- Franchise fees are estimated to be \$1,640,771/year and will be credited to Account No. 10100001-47116.

Capital Improvement Budget Impact:

There is no impact to the Capital Improvement Budget.

Licensing

A Business License application and payment of a Business License tax is not required for this action.

City of Rialto
2025 PROPOSED RATE INCREASE

Service Type	2024 Current Rate	7/1/2025 Proposed Rate	Amount Change	% Change	218 Notice
<u>Residential & Multi Family Barrel</u>					
Size					
60G Tax Roll	\$33.88	\$35.87	\$1.99	5.87%	\$38.31
40G Tax Roll	\$33.11	\$34.18	\$1.07	3.23%	\$37.44
40G Sr. Tax Roll	\$28.14	\$29.05	\$0.91	3.23%	\$31.82
60G	\$34.55	\$36.56	\$2.01	5.82%	\$39.06
40G	\$33.81	\$34.90	\$1.09	3.22%	\$38.22
40G Sr	\$28.74	\$29.66	\$0.92	3.20%	\$32.50
Extra Barrel - Trash	\$7.44	\$7.63	\$0.19	2.55%	\$8.08
Extra Barrel - Recycling	\$2.26	\$2.32	\$0.06	2.65%	\$2.45
Extra Barrel - Organics	\$8.35	\$8.57	\$0.22	2.60%	n/a
Bulky Item - trip chrg (includes 2 items)	\$31.08	\$31.89	\$0.81	2.61%	\$33.74
Bulky Item - per item charge beyond 2	\$12.43	\$12.75	\$0.32	2.57%	\$13.49
Extra Pick-up	\$24.87	\$25.52	\$0.65	2.61%	\$27.00
Barrel Roll Out Service	n/a	\$42.77	n/a	n/a	n/a
<u>Commercial Trash Service with Recycling Equalized with Food Waste</u>					
Size					
1.5	\$133.97	\$139.30	\$5.33	3.98%	\$149.54
1.5	\$206.99	\$216.32	\$9.33	4.51%	\$230.59
1.5	\$283.26	\$296.66	\$13.40	4.73%	\$315.33
1.5	\$359.48	\$376.95	\$17.47	4.86%	\$399.97
1.5	\$435.66	\$457.21	\$21.55	4.95%	\$484.60
1.5	\$511.92	\$537.53	\$25.61	5.00%	\$569.30
2	\$184.10	\$191.32	\$7.22	3.92%	\$205.50
2	\$304.23	\$317.27	\$13.04	4.29%	\$339.18
2	\$424.31	\$443.18	\$18.87	4.45%	\$472.79
2	\$544.46	\$569.17	\$24.71	4.54%	\$606.48
2	\$664.64	\$695.17	\$30.53	4.59%	\$740.20
2	\$784.69	\$821.05	\$36.36	4.63%	\$873.76
3	\$240.19	\$250.24	\$10.05	4.18%	\$267.90
3	\$401.91	\$420.30	\$18.39	4.58%	\$447.62
3	\$563.61	\$590.34	\$26.73	4.74%	\$627.35
3	\$725.40	\$760.47	\$35.07	4.83%	\$807.17
3	\$887.13	\$930.54	\$43.41	4.89%	\$986.92
3	\$1,048.84	\$1,100.60	\$51.76	4.93%	\$1,166.66
Barrel -Trash	\$46.74	\$46.74	\$0.00	0.00%	\$51.76
Barrel -Trash	\$80.50	\$80.50	\$0.00	0.00%	\$88.90
<u>Commercial Compactor Trash w/Recycling Equalized with Food Waste</u>					
Size					
2	\$237.63	\$244.85	\$7.22	3.04%	\$268.87
2	\$411.31	\$424.35	\$13.04	3.17%	\$465.92
2	\$584.91	\$603.78	\$18.87	3.23%	\$662.88
2	\$758.59	\$783.30	\$24.71	3.26%	\$859.93
2	\$932.32	\$962.85	\$30.53	3.27%	\$1,057.03
2	\$1,105.89	\$1,142.25	\$36.36	3.29%	\$1,253.94
3	\$320.49	\$330.54	\$10.05	3.14%	\$362.94
3	\$562.51	\$580.90	\$18.39	3.27%	\$637.71
3	\$804.51	\$831.24	\$26.73	3.32%	\$912.49
3	\$1,046.60	\$1,081.67	\$35.07	3.35%	\$1,187.35
3	\$1,288.62	\$1,332.03	\$43.41	3.37%	\$1,462.14
3	\$1,530.63	\$1,582.39	\$51.76	3.38%	\$1,736.92
4	\$403.38	\$416.25	\$12.87	3.19%	\$457.01
4	\$713.77	\$737.50	\$23.73	3.32%	\$809.58
4	\$1,024.15	\$1,058.73	\$34.58	3.38%	\$1,162.13
4	\$1,334.62	\$1,380.06	\$45.44	3.40%	\$1,514.79
4	\$1,645.00	\$1,701.30	\$56.30	3.42%	\$1,867.35
4	\$1,955.41	\$2,022.56	\$67.15	3.43%	\$2,219.94

Service Type	2024 Current Rate	7/1/2025 Proposed Rate	Amount Change	% Change	218 Notice
<u>Multi Family Trash w/Recycling & Bulky Collection Programs</u>					
Size					
1.5	\$154.19	\$154.19	\$0.00	0.00%	\$172.04
1.5	\$247.42	\$247.42	\$0.00	0.00%	\$275.59
1.5	\$343.91	\$343.91	\$0.00	0.00%	\$382.81
1.5	\$440.34	\$440.34	\$0.00	0.00%	\$489.94
1.5	\$536.74	\$536.74	\$0.00	0.00%	\$597.07
1.5	\$633.21	\$633.21	\$0.00	0.00%	\$704.27
2	\$211.05	\$211.05	\$0.00	0.00%	\$235.50
2	\$358.14	\$358.14	\$0.00	0.00%	\$399.17
2	\$505.17	\$505.17	\$0.00	0.00%	\$562.76
2	\$652.27	\$652.27	\$0.00	0.00%	\$726.44
2	\$799.41	\$799.41	\$0.00	0.00%	\$890.16
2	\$946.41	\$946.41	\$0.00	0.00%	\$1,053.71
3	\$280.62	\$280.62	\$0.00	0.00%	\$312.89
3	\$482.77	\$482.77	\$0.00	0.00%	\$537.60
3	\$684.90	\$684.90	\$0.00	0.00%	\$762.32
3	\$887.12	\$887.12	\$0.00	0.00%	\$987.13
3	\$1,089.28	\$1,089.28	\$0.00	0.00%	\$1,211.87
3	\$1,291.42	\$1,291.42	\$0.00	0.00%	\$1,436.59
<u>Green Waste</u>					
Size					
1.5	\$117.13	\$119.79	\$2.66	2.27%	\$132.81
1.5	\$173.32	\$177.33	\$4.01	2.31%	\$196.44
1.5	\$232.12	\$237.51	\$5.39	2.32%	\$264.46
1.5	\$291.50	\$298.30	\$6.80	2.33%	\$332.42
1.5	\$350.85	\$359.06	\$8.21	2.34%	\$400.33
1.5	\$410.29	\$419.90	\$9.61	2.34%	\$467.60
3	\$206.33	\$211.06	\$4.73	2.29%	\$233.53
3	\$333.54	\$341.26	\$7.72	2.31%	\$379.63
3	\$461.35	\$472.08	\$10.73	2.33%	\$524.93
3	\$588.59	\$602.32	\$13.73	2.33%	\$671.10
3	\$716.47	\$733.20	\$16.73	2.34%	\$816.48
3	\$843.66	\$863.41	\$19.75	2.34%	\$962.56
35g Barrel	\$30.03	\$30.76	\$0.73	2.43%	\$32.72
35g Barrel	\$51.23	\$52.10	\$0.87	1.70%	\$55.79
35g Barrel	\$69.80	\$70.94	\$1.14	1.63%	\$76.01
35g Barrel	\$88.62	\$90.03	\$1.41	1.59%	\$96.49
35g Barrel	\$112.31	\$114.12	\$1.81	1.61%	\$122.29
35g Barrel	\$125.88	\$127.83	\$1.95	1.55%	\$137.07
65g Barrel	\$38.63	\$39.52	\$0.89	2.30%	\$43.85
65g Barrel	\$67.35	\$68.22	\$0.87	1.29%	\$73.45
65g Barrel	\$93.36	\$94.50	\$1.14	1.22%	\$101.82
65g Barrel	\$119.63	\$121.05	\$1.42	1.19%	\$130.46
65g Barrel	\$150.78	\$152.60	\$1.82	1.21%	\$164.41
65g Barrel	\$171.80	\$173.75	\$1.95	1.14%	\$187.34
Extra green waste barrel	\$8.32	\$8.54	\$0.22	2.64%	\$9.03
<u>Temporary Bins</u>					
Temporary Bins (3yd, 7 days)	\$123.16	\$126.38	\$3.22	2.61%	\$133.73
Temp. Bins - Dump & Return	\$113.53	\$116.50	\$2.97	2.62%	\$123.27

City of Rialto
2025 PROPOSED RATE INCREASE

		2024	7/1/2025 Proposed Rate	Amount Change	% Change	218 Notice
Service Type		Current Rate				
<u>Commercial Food Waste w/Recycling Equalized with Trash</u>						
Size	Freq					
2	1	\$184.10	\$191.32	\$7.22	3.92%	\$205.50
2	2	\$304.23	\$317.27	\$13.04	4.29%	\$339.18
2	3	\$424.31	\$443.18	\$18.87	4.45%	\$472.79
2	4	\$544.46	\$569.17	\$24.71	4.54%	\$606.48
2	5	\$664.64	\$695.17	\$30.53	4.59%	\$740.20
2	6	\$784.69	\$821.05	\$36.36	4.63%	\$873.76
35g Barrel	1	\$35.97	\$35.97	\$0.00	0.00%	\$39.29
35g Barrel	2	\$60.09	\$60.09	\$0.00	0.00%	\$65.69
35g Barrel	3	\$83.53	\$83.53	\$0.00	0.00%	\$91.33
35g Barrel	4	\$106.94	\$106.94	\$0.00	0.00%	\$116.94
35g Barrel	5	\$130.39	\$130.39	\$0.00	0.00%	\$142.59
35g Barrel	6	\$153.78	\$153.78	\$0.00	0.00%	\$168.19
65g Barrel	1	\$46.74	\$46.74	\$0.00	0.00%	\$51.76
65g Barrel	2	\$80.50	\$80.50	\$0.00	0.00%	\$88.90
65g Barrel	3	\$113.48	\$113.48	\$0.00	0.00%	\$125.23
65g Barrel	4	\$146.46	\$146.46	\$0.00	0.00%	\$161.53
65g Barrel	5	\$179.46	\$179.46	\$0.00	0.00%	\$197.84
65g Barrel	6	\$212.42	\$212.42	\$0.00	0.00%	\$234.12
<u>Commercial Organics*</u>						
35g Barrel	1	\$35.97	\$35.97	\$0.00	0.00%	\$39.29
65g Barrel	1	\$46.74	\$46.74	\$0.00	0.00%	\$51.76
<u>Roll-Offs (Trash)</u>						
40 yard (6 tons)		\$650.27	\$652.89	\$2.62	0.40%	\$747.32
20 yard (6 tons)		\$650.27	\$652.89	\$2.62	0.40%	\$747.32
10 yard (8 tons)		\$760.29	\$762.91	\$2.62	0.34%	\$877.12
40 yard compactor (8 tons)		\$771.99	\$774.86	\$2.87	0.37%	\$890.25
40 Yard w/Retractable Lid* - Perm		\$771.99	\$774.86	\$2.87	0.37%	n/a
40 yard (6 tons) -Temporary, 7 days		\$674.75	\$682.16	\$7.41	1.10%	\$775.70
20 yard (6 tons) - Temporary, 7 days		\$674.75	\$682.16	\$7.41	1.10%	\$775.70
10 yard (8 tons) - Temporary, 7 days		\$784.77	\$792.18	\$7.41	0.94%	\$905.49
Excess disposal -per ton		\$55.01	\$55.01	\$0.00	0.00%	\$61.81
<u>Roll-Offs Recycling</u>						
40 yard Cardboard/metal (plus disposal)		\$211.84	\$216.44	\$4.60	2.17%	\$237.94
40 yard Wood/GW/Inert (plus disposal)		\$298.41	\$304.89	\$6.48	2.17%	\$335.18
40 yard C&D - 6 tons		\$376.04	\$382.52	\$6.48	1.72%	\$422.41
Waste to Energy to MRF		\$320.22	\$322.84	\$2.62	0.82%	\$357.93
Waste to Energy to SERRF		\$1,203.17	\$1,225.88	\$22.71	1.89%	\$1,349.63

2024		7/1/2025			
Service Type	Current Rate	Proposed Rate	Amount Change	% Change	218 Notice
<u>Other</u>					
Extra Recycling Barrel - Commercial	\$5.75	\$5.90	\$0.15	2.61%	\$6.24
Tilthopper	\$42.32	\$43.43	\$1.11	2.62%	\$45.95
Locking container	\$4.83	\$4.96	\$0.13	2.69%	\$5.25
Extra Pick Up - Commercial Barrel	\$24.87	\$25.52	\$0.65	2.61%	\$27.00
Extra Pick Up - Commercial Bin	\$43.51	\$44.65	\$1.14	2.62%	\$47.24
Extra Pick-Up - Compactor Bin	\$72.08	\$73.96	\$1.88	2.61%	\$78.27
<u>Contamination Fee</u>					
Recycling Bin	\$56.50	\$57.98	\$1.48	2.62%	\$61.35
FW Bin	\$79.79	\$81.88	\$2.09	2.62%	\$86.64
GW Bin	\$66.50	\$68.24	\$1.74	2.62%	\$72.21
Recycling Barrel	\$27.95	\$28.68	\$0.73	2.61%	\$30.35
FW Barrel	\$69.79	\$71.88	\$2.09	2.99%	\$75.41
GW Barrel	\$56.50	\$58.24	\$1.74	3.08%	\$60.97
<u>Barrel Exchange</u> (one exchange per year at no charge, does not apply to graffiti or damaged barrels	\$19.65	\$20.16	\$0.51	2.60%	\$21.34
<u>Bin Exchange</u> (one exchange per year at no charge, does not apply to graffiti or damaged bins	\$98.21	\$100.78	\$2.57	2.62%	\$106.64
<u>Barrel Replacement</u> lost or stolen	\$84.62	\$86.83	\$2.21	2.61%	\$91.88
<u>Bin Replacement</u> + actual cost of bin lost or stolen	\$108.79	\$111.63	\$2.84	2.61%	\$118.13
<u>Additional Roll Off:</u>					
Liner Roll Off	\$138.50	\$141.57	\$3.07	2.22%	\$155.56
RO Retractable Lid (monthly fee)	\$368.72	\$375.01	\$6.29	1.71%	\$405.21
Compactor Rental (monthly fee)	\$368.72	\$375.01	\$6.29	1.71%	n/a
End Dump (rate per hour)	\$348.50	\$354.26	\$5.76	1.65%	n/a
Receiver Rental (per month)	n/a	\$342.97	n/a	n/a	n/a
Relocation Fee	\$60.44	\$62.02	\$1.58	2.61%	\$65.62
Rental Fee	\$178.60	\$183.27	\$4.67	2.61%	\$193.93
Steam Clean (compactor box)	\$179.86	\$184.56	\$4.70	2.61%	\$195.29
Dry Run	\$91.64	\$94.04	\$2.40	2.62%	\$99.50
Certificate of Destruction	\$149.69	\$153.60	\$3.91	2.61%	\$162.54
RO Clean Up - 15 Minutes	\$45.80	\$47.00	\$1.20	2.62%	\$49.72

City of Rialto
Residential Rate Analysis Summary
Standard capacity collection program
Refuse container - 60 gallon (incl Tax Roll Billing Credit)

	Current 2024		Proposed 2025	
	7/1/2024		7/1/2025	
	Components	% Increase	Components	% Increase
Hauler Fees	(a) \$	18.23	\$	18.86
CPI	(1)	0.63		0.49
Total Hauler Fees	\$	18.86	\$	19.35
		3.46%		2.60%
SB1383 Program Compliance Fee		0.90		0.90
Disposal Fees				
Landfill	(2)	3.73		3.65
Mixed Organics Disposal	(3)	4.64		5.04
MRF Processing	(4)	2.26		2.31
Windy Day Tonnage	(5)	0.01		-
Total Disposal Fees		10.64		11.00
		3.80%		3.38%
City Fees				
Franchise Fees		3.47		3.47
AB 939 Fees		0.39		0.39
HazMat Fees		0.38		0.38
Total City Fees		4.24		4.24
		0.00%		0.00%
2024 Rate Stabilization Fee		(0.76)		
Recover 2024 Stabilization Fee				0.38
60 Gallon Rate	\$	33.88	\$	35.87
		2.24%		5.87%
Proposed Increase	\$	-	\$	1.99
memo: Annual Rate	\$	406.56	\$	430.44
		2.24%		5.87%
<u>Extra barrel fee, per month, per single family home:</u>				
Refuse Collection	\$	7.44	\$	7.63
Curbside Mixed Recyclables	\$	2.26	\$	2.32
Organics Collection	\$	8.35	\$	8.57

218
Notice
\$ 38.31

(1) Avg CPI	3.48%	Actual Avg 2023 CPI.	2.61%	Actual Avg 2024 CPI.
	SBCo WDA 7/1/24		SBCo WDA 7/1/25	
(2) Refuse SB Co WDA Fee per Ton	\$ 42.07	0.0%	\$ 42.07	0.0%
Refuse Lbs/House	40.91	9.2%	40.02	-2.2%
	AM 7/1/2024		AM 7/1/2025	
(3) Mixed Organics Fee per Ton - Agua Mar	\$ 89.57	3.0%	\$ 93.15	4.0%
Organics Lbs/House	23.92	-5.6%	24.96	4.3%
	2023 Actual		2024 Actual	
(4) Recycling Processing per Ton	\$ 79.30	11.3%	\$ 83.40	5.2%
Rec Processing Lbs/House	13.18	0.2%	12.81	-2.8%
(5) Recovering Windy Days Cost	as of 7/1/23		as of 7/1/24	
AM WDA Fee	\$ 73.01		\$ 73.51	
SBCo WDA Fee	\$ 42.07		\$ 42.07	
Difference AM with WDA	\$ 30.94		\$ 31.44	
Windy Days Tonnage	41.19		-	
Total Cost	\$ 1,274.48		\$ -	
Customers	20,482		20,799	
Cost per month/per home	\$ 0.01		\$ -	

(a) Hauler Fees include Vehicles, Containers, Equipment Maintenance, Payroll,
Direct Overhead expenses, Return on Investment and General and Administrative Costs.
1 60gl Tax Roll p1

Burrtec Waste Industries
City of Rialto
Residential Rate Analysis Summary
Reduced capacity collection program
Refuse container - 40 gallon/Senior and Disabled (incl Tax Roll Billing Credit)

		Current 2024		Proposed 2025	
		7/1/2024		7/1/2025	
		Components	% Increase	Components	% Increase
Hauler Fees	(a)	\$ 18.14		\$ 18.77	
CPI	(1)	0.63		0.49	
Total Hauler Fees		\$ 18.77	3.47%	\$ 19.26	2.61%
SB1383 Program Compliance Fee		\$ 0.90		\$ 0.90	
Disposal Fees					
Landfill	(2)	2.49		2.43	
Mixed Organics Disposal	(3)	4.64		5.04	
MRF Processing	(4)	2.26		2.31	
Windy Day Tonnage	(5)	0.01		-	
Total Disposal Fees		9.40	-3.09%	9.78	4.04%
City Fees					
Franchise Fees		3.37		3.37	
AB 939 Fees		0.39		0.39	
HazMat Fees		0.38		0.38	
Total City Fees		4.14	0.00%	4.14	0.00%
Recover 2022 Stabilization Fee		-			
2024 Rate Stabilization Fee		(0.10)			
Recover 2024 Stabilization Fee				0.10	
40 Gallon Rate		\$ 33.11	0.00%	\$ 34.18	3.23%
Proposed Increase		\$ -		\$ 1.07	
memo: Annual Rate		\$ 397.32		\$ 410.16	
Discount - 15%		\$ (4.97)		\$ (5.13)	
Sr Discount Rate		\$ 28.14	0.00%	\$ 29.05	3.23%
Proposed Increase		\$ -		\$ 0.91	
memo: Annual Rate		\$ 337.68	0.00%	\$ 348.60	3.23%
Extra barrel fee, per month, per single family home:					
Refuse Collection		\$ 7.44		\$ 7.63	
Curbside Mixed Recyclables		\$ 2.26		\$ 2.32	
Organics Collection		\$ 8.35		\$ 8.57	

218
Notice
\$ 37.44

218
Notice
\$ 31.82

(1) Avg CPI	3.48%	2.61%
(2) Refuse SB Co WDA Fee per Ton	SBCo WDA 7/1/24 \$ 42.07	SBCo WDA 7/1/25 \$ 42.07
Refuse Lbs/House	27.27	26.68
(3) Mixed Organics Fee per Ton	AM 7/1/2024 \$ 89.57	AM 7/1/2025 \$ 93.15
Organics Lbs/House	23.92	24.96
(4) Recycling Rebate per Ton	2023 Actual \$ 79.30	2024 Actual \$ 83.40
Rec Processing Lbs/House	13.18	12.81
(5) Recovering Windy Days Cost	as of 7/1/23	as of 7/1/24
AM Fee	\$ 73.01	\$ 73.51
WDA Fee	\$ 42.07	\$ 42.07
Diff with WDA	\$ 30.94	\$ 31.44
Windy Days Tonnage	41.19	
Total Cost	\$ 1,274.48	\$ -
Customers	20,482	20,799
Cost per month/per home	\$ 0.01	\$ -

(a) Hauler Fees include Vehicles, Containers, Equipment Maintenance, Payroll,
Direct Overhead expenses, Return on Investment and General and Administrative Costs.

Burrtec Waste Industries
City of Rialto
Residential Rate Analysis Summary
Standard capacity collection program
Refuse container - 60 gallon

		Current 2024		Proposed 2025	
		7/1/2024		7/1/2025	
		Components	% Increase	Components	% Increase
Hauler Fees	(a)	\$ 18.80		\$ 19.45	
CPI	(1)	0.65		0.51	
Total Hauler Fees		\$ 19.45	3.46%	\$ 19.96	2.62%
SB1383 Program Compliance Fee		\$ 0.90		\$ 0.90	
Disposal Fees					
Landfill	(2)	3.73		3.65	
Mixed Organics Disposal	(3)	4.64		5.04	
MRF Processing	(4)	2.26		2.31	
Windy Day Tonnage	(5)	0.01		-	
Total Disposal Fees		10.64	3.80%	11.00	3.38%
City Fees					
Franchise Fees		3.55		3.55	
AB 939 Fees		0.39		0.39	
HazMat Fees		0.38		0.38	
Total City Fees		4.32	0.00%	4.32	0.00%
Recover 2022 Stabilization Fee					
2024 Rate Stabilization Fee		(0.76)			
Recover 2024 Stabilization Fee				0.38	
60 Gallon Rate		\$ 34.55	0.00%	\$ 36.56	5.82%
Proposed Increase		\$ -		\$ 2.01	
<u>Extra barrel fee, per month, per single family home:</u>					
Refuse Collection		\$ 7.44		\$ 7.63	
Curbside Mixed Recyclables		\$ 2.26		\$ 2.32	
Organics Collection		\$ 1.81		\$ 8.57	
		8.353			

218
Notice
\$ 39.06

(1) Avg CPI	3.48%	2.61%
(2) Refuse SB Co WDA Fee per Ton	SBCo WDA 7/1/24 \$ 42.07	SBCo WDA 7/1/25 \$ 42.07
Refuse Lbs/House	40.91	40.02
(3) Mixed Organics Fee per Ton - Agua	AM 7/1/2024 \$ 89.57	AM 7/1/2025 \$ 93.15
Organics Lbs/House	23.92	24.96
(4) Recycling Rebate per Ton	2023 Actual \$ 79.30	2024 Actual \$ 83.40
Rec Processing Lbs/House	13.18	12.81
(5) Recovering Windy Days Cost	as of 7/1/23	as of 7/1/24
AM Fee	\$ 73.01	\$ 73.51
WDA Fee	\$ 42.07	\$ 42.07
Diff with WDA	\$ 30.94	\$ 31.44
Windy Days Tonnage	41.19	-
Total Cost	\$ 1,274.48	\$ -
Customers	20,482	20,799
Cost per month/per home	\$ 0.01	\$ -

(a) Hauler Fees include Vehicles, Containers, Equipment Maintenance, Payroll,
Direct Overhead expenses, Return on Investment and General and Administrative Costs.
3 60gl NonTaxRollp3

Burrtec Waste Industries
City of Rialto
Residential Rate Analysis Summary
Reduced capacity collection program
Refuse container - 40 gallon/Senior and Disabled

		Current 2024		Proposed 2025	
		7/1/2024		7/1/2025	
		Components	% Increase	Components	% Increase
Hauler Fees					
(a)	\$	18.73		\$	19.38
(1)		0.65		0.51	
Total Hauler Fees		19.38	3.47%	19.89	2.63%
SB1383 Program Compliance Fee		0.90		0.90	
Disposal Fees					
(2)		2.49		2.43	
(3)		4.64		5.04	
(4)		2.26		2.31	
(5)		0.01		-	
Total Disposal Fees		9.40	-3.09%	9.78	4.04%
City Fees					
		3.46		3.46	
		0.39		0.39	
		0.38		0.38	
Total City Fees		4.23	0.00%	4.23	0.00%
Recover 2022 Stabilization Fee					
2024 Rate Stabilization Fee	(0.10)			0.10	
Recover 2024 Stabilization Fee					
40 Gallon Rate	\$	33.81	0.00%	\$ 34.90	3.22%
Proposed Increase	\$	-		\$ 1.09	
Discount - 15%		(5.07)		(5.24)	
Sr Discount Rate	\$	28.74	10.11%	\$ 29.66	3.20%
Proposed Increase	\$	-		\$ 0.92	
Extra barrel fee, per month, per single family home:					
Refuse Collection	\$	7.44		\$ 7.63	
Curbside Mixed Recyclables	\$	2.26		\$ 2.32	
Organics Collection	\$	8.35		\$ 8.57	

218
Notice
\$ 38.22

218
Notice
\$ 32.50

(1) Avg CPI	3.48%	2.61%
(2) Refuse SB Co WDA Fee per Ton	SBCo WDA 7/1/24 \$ 42.07	SBCo WDA 7/1/25 \$ 42.07
Refuse Lbs/House	27.27	26.68
(3) Mixed Organics Fee per Ton	AM 7/1/2024 \$ 89.57	AM 7/1/2025 \$ 93.15
Organics Lbs/House	23.92	24.96
(4) Recycling Rebate per Ton	2023 Actual \$ 79.30	2024 Actual \$ 83.40
Rec Processing Lbs/House	13.18	12.81
(5) Recovering Windy Days Cost	as of 7/1/23	as of 7/1/24
AM Fee	\$ 73.01	\$ 73.51
WDA Fee	\$ 42.07	\$ 42.07
Diff with WDA	\$ 30.94	\$ 31.44
Windy Days Tonnage	41.19	-
Total Cost	\$ 1,274.48	\$ -
Customers	20,482	20,799
Cost per month/per home	\$ 0.01	\$ -

(a) Hauler Fees include Vehicles, Containers, Equipment Maintenance, Payroll,
Direct Overhead expenses, Return on Investment and General and Administrative Costs.
4 40gl & Sr NonTaxRoll p3b

Burrtec Waste Industries
City of Rialto
Multi Family Rate Analysis Summary
Standard capacity collection program
Refuse container - 60 gallon

		Current 2024		Proposed 2025	
		7/1/2024		7/1/2025	
		Components	% Increase	Components	% Increase
Total Hauler Fees	(a)	\$ 19.45	3.46%	\$ 19.96	2.62%
SB1383 Program Compliance Fee		\$ 0.90		\$ 0.90	
Disposal Fees					
Landfill	(1)	3.73		3.65	
Mixed Organics Disposal	(2)	4.64		5.04	
MRF Processing	(3)	2.26		2.31	
Windy Day Tonnage	(4)	0.01		-	
Total Disposal Fees		10.64	3.80%	11.00	3.38%
City Fees					
Franchise Fees		3.55		3.55	
AB 939 Fees		0.39		0.39	
HazMat Fees		0.38		0.38	
Total City Fees		4.32	0.00%	4.32	0.00%
Recover 2022 Stabilization Fee					
2024 Rate Stabilization Fee		(0.76)			
Recover 2024 Stabilization Fee				0.38	
60 Gallon Rate		\$ 34.55	0.00%	\$ 36.56	5.82%
Proposed Increase		\$ -		\$ 2.01	
<u>Extra barrel fee, per month, per single family home:</u>					
Refuse Collection		\$ 7.44		\$ 7.63	
Curbside Mixed Recyclables		\$ 2.26		\$ 2.32	
Organics Collection		\$ 8.35		\$ 8.57	

218 Notice
\$ 39.06

Avg CPI	3.48%	2.61%
SBCo WDA 7/1/24		
(1) Refuse SB Co WDA Fee per Ton	\$ 42.07	\$ 42.07
Refuse Lbs/House	40.91	40.02
AM 7/1/2024		
(2) Mixed Organics Fee per Ton	\$ 89.57	\$ 93.15
Organics Lbs/House	23.92	24.96
2023 Actual		
(3) Recycling Rebate per Ton	\$ 79.30	\$ 83.40
Rec Processing Lbs/House	13.18	12.81
as of 7/1/23		
(4) Recovering Windy Days Cost	\$ 73.01	\$ 73.51
AM Fee	\$ 42.07	\$ 42.07
WDA Fee	\$ 30.94	\$ 31.44
Diff with WDA	41.19	-
Windy Days Tonnage	\$ 1,274.48	\$ -
Total Cost	20,482	20,799
Customers	\$ 0.01	\$ -
Cost per month/per home		

(a) Hauler Fees include Vehicles, Containers, Equipment Maintenance, Payroll, Direct Overhead expenses, Return on Investment and General and Administrative Costs.

Burrtec Waste Industries
City of Rialto
Commercial Rate Adjustment
Commercial Refuse with Recycling & Food Waste - Equalized

		July 1, 2024											July 1, 2025													7/1/2025 vs. 7/1/2024	7/1/2025 vs. 7/1/2024	218 Notice																																																																																																																																																																																																																																																																																																																																																																																						
		Current Refuse With Recycling & Food Waste - Equalized											Proposed Refuse With Recycling & Food Waste - Equalized																																																																																																																																																																																																																																																																																																																																																																																																					
		CPI % 3.48%	WDA \$ 42.07	Per Yard \$ -	Per Yard \$ 0.38	Recycling Per Yard SB 1383	FW Fee Per Yard \$ 1.41	Per Yard \$ (1.43)	Per Yard \$ (1.43)	Per Yard \$ (1.43)	Per Yard \$ (1.43)	Per Yard \$ (1.43)	CPI % 2.61%	WDA \$ 42.07	Per Yard \$ -	Per Yard \$ 0.38	Recycling Per Yard SB 1383	FW Fee Per Yard \$ 1.06	FW Fee Per Yard \$ (0.40)	FW Fee Per Yard \$ (0.40)	FW Fee Per Yard \$ (0.40)	FW Fee Per Yard \$ (0.40)	FW Fee Per Yard \$ (0.40)	FW Fee Per Yard \$ (0.40)	FW Fee Per Yard \$ (0.40)				FW Fee Per Yard \$ (0.40)	FW Fee Per Yard \$ (0.40)	FW Fee Per Yard \$ (0.40)	FW Fee Per Yard \$ (0.40)	FW Fee Per Yard \$ (0.40)	FW Fee Per Yard \$ (0.40)	FW Fee Per Yard \$ (0.40)	FW Fee Per Yard \$ (0.40)	FW Fee Per Yard \$ (0.40)	FW Fee Per Yard \$ (0.40)	FW Fee Per Yard \$ (0.40)	FW Fee Per Yard \$ (0.40)	FW Fee Per Yard \$ (0.40)	FW Fee Per Yard \$ (0.40)	FW Fee Per Yard \$ (0.40)	FW Fee Per Yard \$ (0.40)	FW Fee Per Yard \$ (0.40)	FW Fee Per Yard \$ (0.40)	FW Fee Per Yard \$ (0.40)	FW Fee Per Yard \$ (0.40)	FW Fee Per Yard \$ (0.40)	FW Fee Per Yard \$ (0.40)	FW Fee Per Yard \$ (0.40)	FW Fee Per Yard \$ (0.40)	FW Fee Per Yard \$ (0.40)	FW Fee Per Yard \$ (0.40)	FW Fee Per Yard \$ (0.40)	FW Fee Per Yard \$ (0.40)	FW Fee Per Yard \$ (0.40)	FW Fee Per Yard \$ (0.40)	FW Fee Per Yard \$ (0.40)	FW Fee Per Yard \$ (0.40)	FW Fee Per Yard \$ (0.40)	FW Fee Per Yard \$ (0.40)	FW Fee Per Yard \$ (0.40)	FW Fee Per Yard \$ (0.40)	FW Fee Per Yard \$ (0.40)	FW Fee Per Yard \$ (0.40)	FW Fee Per Yard \$ (0.40)	FW Fee Per Yard \$ (0.40)	FW Fee Per Yard \$ (0.40)	FW Fee Per Yard \$ (0.40)	FW Fee Per Yard \$ (0.40)	FW Fee Per Yard \$ (0.40)	FW Fee Per Yard \$ (0.40)	FW Fee Per Yard \$ (0.40)	FW Fee Per Yard \$ (0.40)	FW Fee Per Yard \$ (0.40)	FW Fee Per Yard \$ (0.40)	FW Fee Per Yard \$ (0.40)	FW Fee Per Yard \$ (0.40)	FW Fee Per Yard \$ (0.40)	FW Fee Per Yard \$ (0.40)	FW Fee Per Yard \$ (0.40)	FW Fee Per Yard \$ (0.40)	FW Fee Per Yard \$ (0.40)	FW Fee Per Yard \$ (0.40)	FW Fee Per Yard \$ (0.40)	FW Fee Per Yard \$ (0.40)	FW Fee Per Yard \$ (0.40)	FW Fee Per Yard \$ (0.40)	FW Fee Per Yard \$ (0.40)	FW Fee Per Yard \$ (0.40)	FW Fee Per Yard \$ (0.40)	FW Fee Per Yard \$ (0.40)	FW Fee Per Yard \$ (0.40)	FW Fee Per Yard \$ (0.40)	FW Fee Per Yard \$ (0.40)	FW Fee Per Yard \$ (0.40)	FW Fee Per Yard \$ (0.40)	FW Fee Per Yard \$ (0.40)	FW Fee Per Yard \$ (0.40)	FW Fee Per Yard \$ (0.40)	FW Fee Per Yard \$ (0.40)	FW Fee Per Yard \$ (0.40)	FW Fee Per Yard \$ (0.40)	FW Fee Per Yard \$ (0.40)	FW Fee Per Yard \$ (0.40)	FW Fee Per Yard \$ (0.40)	FW Fee Per Yard \$ (0.40)	FW Fee Per Yard \$ (0.40)	FW Fee Per Yard \$ (0.40)	FW Fee Per Yard \$ (0.40)	FW Fee Per Yard \$ (0.40)	FW Fee Per Yard \$ (0.40)	FW Fee Per Yard \$ (0.40)	FW Fee Per Yard \$ (0.40)	FW Fee Per Yard \$ (0.40)	FW Fee Per Yard \$ (0.40)	FW Fee Per Yard \$ (0.40)	FW Fee Per Yard \$ (0.40)	FW Fee Per Yard \$ (0.40)	FW Fee Per Yard \$ (0.40)	FW Fee Per Yard \$ (0.40)	FW Fee Per Yard \$ (0.40)	FW Fee Per Yard \$ (0.40)	FW Fee Per Yard \$ (0.40)	FW Fee Per Yard \$ (0.40)	FW Fee Per Yard \$ (0.40)	FW Fee Per Yard \$ (0.40)	FW Fee Per Yard \$ (0.40)	FW Fee Per Yard \$ (0.40)	FW Fee Per Yard \$ (0.40)	FW Fee Per Yard \$ (0.40)	FW Fee Per Yard \$ (0.40)	FW Fee Per Yard \$ (0.40)	FW Fee Per Yard \$ (0.40)	FW Fee Per Yard \$ (0.40)	FW Fee Per Yard \$ (0.40)	FW Fee Per Yard \$ (0.40)	FW Fee Per Yard \$ (0.40)	FW Fee Per Yard \$ (0.40)	FW Fee Per Yard \$ (0.40)	FW Fee Per Yard \$ (0.40)	FW Fee Per Yard \$ (0.40)	FW Fee Per Yard \$ (0.40)	FW Fee Per Yard \$ (0.40)	FW Fee Per Yard \$ (0.40)	FW Fee Per Yard \$ (0.40)	FW Fee Per Yard \$ (0.40)	FW Fee Per Yard \$ (0.40)	FW Fee Per Yard \$ (0.40)	FW Fee Per Yard \$ (0.40)	FW Fee Per Yard \$ (0.40)	FW Fee Per Yard \$ (0.40)	FW Fee Per Yard \$ (0.40)	FW Fee Per Yard \$ (0.40)	FW Fee Per Yard \$ (0.40)	FW Fee Per Yard \$ (0.40)	FW Fee Per Yard \$ (0.40)	FW Fee Per Yard \$ (0.40)	FW Fee Per Yard \$ (0.40)	FW Fee Per Yard \$ (0.40)	FW Fee Per Yard \$ (0.40)	FW Fee Per Yard \$ (0.40)	FW Fee Per Yard \$ (0.40)	FW Fee Per Yard \$ (0.40)	FW Fee Per Yard \$ (0.40)	FW Fee Per Yard \$ (0.40)	FW Fee Per Yard \$ (0.40)	FW Fee Per Yard \$ (0.40)	FW Fee Per Yard \$ (0.40)	FW Fee Per Yard \$ (0.40)	FW Fee Per Yard \$ (0.40)	FW Fee Per Yard \$ (0.40)	FW Fee Per Yard \$ (0.40)	FW Fee Per Yard \$ (0.40)	FW Fee Per Yard \$ (0.40)	FW Fee Per Yard \$ (0.40)	FW Fee Per Yard \$ (0.40)	FW Fee Per Yard \$ (0.40)	FW Fee Per Yard \$ (0.40)	FW Fee Per Yard \$ (0.40)	FW Fee Per Yard \$ (0.40)	FW Fee Per Yard \$ (0.40)	FW Fee Per Yard \$ (0.40)	FW Fee Per Yard \$ (0.40)	FW Fee Per Yard \$ (0.40)	FW Fee Per Yard \$ (0.40)	FW Fee Per Yard \$ (0.40)	FW Fee Per Yard \$ (0.40)	FW Fee Per Yard \$ (0.40)	FW Fee Per Yard \$ (0.40)	FW Fee Per Yard \$ (0.40)	FW Fee Per Yard \$ (0.40)	FW Fee Per Yard \$ (0.40)	FW Fee Per Yard \$ (0.40)	FW Fee Per Yard \$ (0.40)	FW Fee Per Yard \$ (0.40)	FW Fee Per Yard \$ (0.40)	FW Fee Per Yard \$ (0.40)	FW Fee Per Yard \$ (0.40)	FW Fee Per Yard \$ (0.40)	FW Fee Per Yard \$ (0.40)	FW Fee Per Yard \$ (0.40)	FW Fee Per Yard \$ (0.40)	FW Fee Per Yard \$ (0.40)	FW Fee Per Yard \$ (0.40)	FW Fee Per Yard \$ (0.40)	FW Fee Per Yard \$ (0.40)	FW Fee Per Yard \$ (0.40)	FW Fee Per Yard \$ (0.40)	FW Fee Per Yard \$ (0.40)	FW Fee Per Yard \$ (0.40)	FW Fee Per Yard \$ (0.40)	FW Fee Per Yard \$ (0.40)	FW Fee Per Yard \$ (0.40)	FW Fee Per Yard \$ (0.40)	FW Fee Per Yard \$ (0.40)	FW Fee Per Yard \$ (0.40)	FW Fee Per Yard \$ (0.40)	FW Fee Per Yard \$ (0.40)	FW Fee Per Yard \$ (0.40)	FW Fee Per Yard \$ (0.40)	FW Fee Per Yard \$ (0.40)	FW Fee Per Yard \$ (0.40)	FW Fee Per Yard \$ (0.40)	FW Fee Per Yard \$ (0.40)	FW Fee Per Yard \$ (0.40)	FW Fee Per Yard \$ (0.40)	FW Fee Per Yard \$ (0.40)	FW Fee Per Yard \$ (0.40)	FW Fee Per Yard \$ (0.40)	FW Fee Per Yard \$ (0.40)	FW Fee Per Yard \$ (0.40)	FW Fee Per Yard \$ (0.40)	FW Fee Per Yard \$ (0.40)	FW Fee Per Yard \$ (0.40)	FW Fee Per Yard \$ (0.40)	FW Fee Per Yard \$ (0.40)	FW Fee Per Yard \$ (0.40)	FW Fee Per Yard \$ (0.40)	FW Fee Per Yard \$ (0.40)	FW Fee Per Yard \$ (0.40)	FW Fee Per Yard \$ (0.40)	FW Fee Per Yard \$ (0.40)	FW Fee Per Yard \$ (0.40)	FW Fee Per Yard \$ (0.40)	FW Fee Per Yard \$ (0.40)	FW Fee Per Yard \$ (0.40)	FW Fee Per Yard \$ (0.40)	FW Fee Per Yard \$ (0.40)	FW Fee Per Yard \$ (0.40)	FW Fee Per Yard \$ (0.40)	FW Fee Per Yard \$ (0.40)	FW Fee Per Yard \$ (0.40)	FW Fee Per Yard \$ (0.40)	FW Fee Per Yard \$ (0.40)	FW Fee Per Yard \$ (0.40)	FW Fee Per Yard \$ (0.40)	FW Fee Per Yard \$ (0.40)	FW Fee Per Yard \$ (0.40)	FW Fee Per Yard \$ (0.40)	FW Fee Per Yard \$ (0.40)	FW Fee Per Yard \$ (0.40)	FW Fee Per Yard \$ (0.40)	FW Fee Per Yard \$ (0.40)	FW Fee Per Yard \$ (0.40)	FW Fee Per Yard \$ (0.40)	FW Fee Per Yard \$ (0.40)	FW Fee Per Yard \$ (0.40)	FW Fee Per Yard \$ (0.40)	FW Fee Per Yard \$ (0.40)	FW Fee Per Yard \$ (0.40)	FW Fee Per Yard \$ (0.40)	FW Fee Per Yard \$ (0.40)	FW Fee Per Yard \$ (0.40)	FW Fee Per Yard \$ (0.40)	FW Fee Per Yard \$ (0.40)	FW Fee Per Yard \$ (0.40)	FW Fee Per Yard \$ (0.40)	FW Fee Per Yard \$ (0.40)	FW Fee Per Yard \$ (0.40)	FW Fee Per Yard \$ (0.40)	FW Fee Per Yard \$ (0.40)	FW Fee Per Yard \$ (0.40)	FW Fee Per Yard \$ (0.40)	FW Fee Per Yard \$ (0.40)	FW Fee Per Yard \$ (0.40)	FW Fee Per Yard \$ (0.40)	FW Fee Per Yard \$ (0.40)	FW Fee Per Yard \$ (0.40)	FW Fee Per Yard \$ (0.40)	FW Fee Per Yard \$ (0.40)	FW Fee Per Yard \$ (0.40)	FW Fee Per Yard \$ (0.40)	FW Fee Per Yard \$ (0.40)	FW Fee Per Yard \$ (0.40)	FW Fee Per Yard \$ (0.40)	FW Fee Per Yard \$ (0.40)	FW Fee Per Yard \$ (0.40)	FW Fee Per Yard \$ (0.40)	FW Fee Per Yard \$ (0.40)	FW Fee Per Yard \$ (0.40)	FW Fee Per Yard \$ (0.40)	FW Fee Per Yard \$ (0.40)	FW Fee Per Yard \$ (0.40)	FW Fee Per Yard \$ (0.40)	FW Fee Per Yard \$ (0.40)	FW Fee Per Yard \$ (0.40)	FW Fee Per Yard \$ (0.40)	FW Fee Per Yard \$ (0.40)	FW Fee Per Yard \$ (0.40)	FW Fee Per Yard \$ (0.40)	FW Fee Per Yard \$ (0.40)	FW Fee Per Yard \$ (0.40)	FW Fee Per Yard \$ (0.40)	FW Fee Per Yard \$ (0.40)	FW Fee Per Yard \$ (0.40)	FW Fee Per Yard \$ (0.40)	FW Fee Per Yard \$ (0.40)	FW Fee Per Yard \$ (0.40)	FW Fee Per Yard \$ (0.40)	FW Fee Per Yard \$ (0.40)	FW Fee Per Yard \$ (0.40)	FW Fee Per Yard \$ (0.40)	FW Fee Per Yard \$ (0.40)	FW Fee Per Yard \$ (0.40)	FW Fee Per Yard \$ (0.40)	FW Fee Per Yard \$ (0.40)	FW Fee Per Yard \$ (0.40)	FW Fee Per Yard \$ (0.40)	FW Fee Per Yard \$ (0.40)	FW Fee Per Yard \$ (0.40)	FW Fee Per Yard \$ (0.40)	FW Fee Per Yard \$ (0.40)	FW Fee Per Yard \$ (0.40)	FW Fee Per Yard \$ (0.40)	FW Fee Per Yard \$ (0.40)	FW Fee Per Yard \$ (0.40)	FW Fee Per Yard \$ (0.40)	FW Fee Per Yard \$ (0.40)	FW Fee Per Yard \$ (0.40)	FW Fee Per Yard \$ (0.40)	FW Fee Per Yard \$ (0.40)	FW Fee Per Yard \$ (0.40)	FW Fee Per Yard \$ (0.40)	FW Fee Per Yard \$ (0.40)	FW Fee Per Yard \$ (0.40)	FW Fee Per Yard \$ (0.40)	FW Fee Per Yard \$ (0.40)	FW Fee Per Yard \$ (0.40)	FW Fee Per Yard \$ (0.40)	FW Fee Per Yard \$ (0.40)	FW Fee Per Yard \$ (0.40)	FW Fee Per Yard \$ (0.40)	FW Fee Per Yard \$ (0.40)	FW Fee Per Yard \$ (0.40)	FW Fee Per Yard \$ (0.40)	FW Fee Per Yard \$ (0.40)	FW Fee Per Yard \$ (0.40)	FW Fee Per Yard \$ (0.40)	FW Fee Per Yard \$ (0.40)	FW Fee Per Yard \$ (0.40)	FW Fee Per Yard \$ (0.40)	FW Fee Per Yard \$ (0.40)	FW Fee Per Yard \$ (0.40)	FW Fee Per Yard \$ (0.40)	FW Fee Per Yard \$ (0.40)	FW Fee Per Yard \$ (0.40)	FW Fee Per Yard \$ (0.40)	FW Fee Per Yard \$ (0.40)	FW Fee Per Yard \$ (0.40)	FW Fee Per Yard \$ (0.40)	FW Fee Per Yard \$ (0.40)	FW Fee Per Yard \$ (0.40)	FW Fee Per Yard \$ (0.40)	FW Fee Per Yard \$ (0.40)	FW Fee Per Yard \$ (0.40)	FW Fee Per Yard \$ (0.40)	FW Fee Per Yard \$ (0.40)	FW Fee Per Yard \$ (0.40)	FW Fee Per Yard \$ (0.40)	FW Fee Per Yard \$ (0.40)	FW Fee Per Yard \$ (0.40)	FW Fee Per Yard \$ (0.40)	FW Fee Per Yard \$ (0.40)	FW Fee Per Yard \$ (0.40)	FW Fee Per Yard \$ (0.40)	FW Fee Per Yard \$ (0.40)	FW Fee Per Yard \$ (0.40)	FW Fee Per Yard \$ (0.40)	FW Fee Per Yard \$ (0.40)	FW Fee Per Yard \$ (0.40)	FW Fee Per Yard \$ (0.40)	FW Fee Per Yard \$ (0.40)	FW Fee Per Yard \$ (0.40)	FW Fee Per Yard \$ (0.40)	FW Fee Per Yard \$ (0.40)	FW Fee Per Yard \$ (0.40)	FW Fee Per Yard \$ (0.40)	FW Fee Per Yard \$ (0.40)	FW Fee Per Yard \$ (0.40)	FW Fee Per Yard \$ (0.40)

City of Rialto
Commercial Rate Adjustment
Food Waste with Recycling - Equalized

			July 1, 2024 Current FW Equalized Rate With Recycling											July 1, 2025 Proposed FW Equalized Rate With Recycling																
Bin Size	Freq	CPI %	WDA	Per Yard	Per Yard	Recycling	FW Fee	FW Fee	Flat	Credits	Franchise	Flat	Flat	Total	CPI %	WDA	Per Yard	Per Yard	Recycling	FW Fee	FW Fee	2025	Flat	Franchise	Flat	Flat	Total	7/1/2025	7/1/2025	218
		3.48%	\$ 42.07	\$	\$ 0.38	\$	\$	(1.43)							2.61%	\$ 42.07	\$	\$ 0.38	\$	\$	(0.40)							vs.	vs.	
		Lbs/Yrd	\$ -	SB 1383	\$ 4.28	\$ 1.41	2021/22	Lbs/Yrd							\$ -	SB 1383	\$ 4.15	\$ 1.06	(0.40)	7/1/2024	7/1/2024									
Service	120	Windy	Compliance	Recycling	FW Fee	phased in	Franchise	Flat	Flat		Service	120	Windy	Compliance	Recycling	FW Fee	2024	Rate	Franchise	Flat	Flat		Incr	%	Notice					
	Landfill	Day	Fee			2 Years	Fee	AB939	HazMat			Landfill	Day	Fee			Credit	Stabilization	Fee	AB939	HazMat		\$	%						
2	1	93.74	21.88	0.00	3.29	37.09	12.22	(12.39)	18.30	4.88	5.09	\$184.10	96.19	21.88	0.00	3.29	35.97	9.19	(3.47)	18.30	4.88	5.09	\$191.32	\$7.22	3.9%	\$205.50				
2	2	134.36	43.75	0.00	6.59	74.19	24.44	(24.79)	29.58	7.89	8.22	\$304.23	137.87	43.75	0.00	6.59	71.93	18.37	(6.93)	29.58	7.89	8.22	\$317.27	\$13.04	4.3%	\$339.18				
2	3	174.93	65.63	0.00	9.88	111.28	36.66	(37.18)	40.86	10.90	11.35	\$424.31	179.50	65.63	0.00	9.88	107.90	27.56	(10.40)	40.86	10.90	11.35	\$443.18	\$18.87	4.4%	\$472.79				
2	4	215.56	87.51	0.00	13.17	148.37	48.88	(49.57)	52.14	13.91	14.49	\$544.46	221.20	87.51	0.00	13.17	143.87	36.75	(13.87)	52.14	13.91	14.49	\$569.17	\$24.71	4.5%	\$606.48				
2	5	256.22	109.38	0.00	16.47	185.47	61.10	(61.97)	63.43	16.92	17.62	\$664.64	262.92	109.38	0.00	16.47	179.83	45.93	(17.33)	63.43	16.92	17.62	\$695.17	\$30.53	4.6%	\$740.20				
2	6	296.76	131.26	0.00	19.76	222.56	73.32	(74.36)	74.70	19.93	20.76	\$784.69	304.52	131.26	0.00	19.76	215.80	55.12	(20.80)	74.70	19.93	20.76	\$821.05	\$36.36	4.6%	\$873.76				
35Gal	1	20.58	2.11	0.00	0.62	6.96	2.30		2.20	0.59	0.61	\$35.97	21.12	2.11	0.00	0.29	3.15	0.80	(0.30)	5.40	2.20	0.59	0.61	\$35.97	\$0.00	0.0%	\$39.29			
35Gal	2	30.44	4.21	0.00	1.24	13.91	4.59		3.69	0.98	1.03	\$60.09	31.24	4.21	0.00	0.58	6.29	1.61	(0.61)	11.07	3.69	0.98	1.03	\$60.09	\$0.00	0.0%	\$65.69			
35Gal	3	39.66	6.32	0.00	1.86	20.87	6.89		5.13	1.37	1.43	\$83.53	40.70	6.32	0.00	0.86	9.44	2.41	(0.91)	16.78	5.13	1.37	1.43	\$83.53	\$0.00	0.0%	\$91.33			
35Gal	4	48.89	8.42	0.00	2.48	27.82	9.18		6.57	1.75	1.83	\$106.94	50.17	8.42	0.00	1.15	12.59	3.22	(1.21)	22.45	6.57	1.75	1.83	\$106.94	\$0.00	0.0%	\$116.94			
35Gal	5	58.12	10.53	0.00	3.10	34.78	11.48		8.01	2.14	2.23	\$130.39	59.64	10.53	0.00	1.44	15.74	4.02	(1.52)	28.16	8.01	2.14	2.23	\$130.39	\$0.00	0.0%	\$142.59			
35Gal	6	67.33	12.63	0.00	3.72	41.73	13.77		9.45	2.52	2.63	\$153.78	69.09	12.63	0.00	1.73	18.88	4.82	(1.82)	33.85	9.45	2.52	2.63	\$153.78	\$0.00	0.0%	\$168.19			
65Gal	1	20.66	4.21	-	1.24	13.91	4.59	(4.65)	4.39	1.17	1.22	\$46.74	21.20	4.21	-	0.54	5.84	1.49	(0.56)	7.24	4.39	1.17	1.22	\$46.74	\$0.00	0.0%	\$51.76			
65Gal	2	30.54	8.42	0.00	2.47	27.82	9.17	(9.30)	7.37	1.96	2.05	\$80.50	31.34	8.42	0.00	1.07	11.69	2.99	(1.13)	14.74	7.37	1.96	2.05	\$80.50	\$0.00	0.0%	\$88.90			
65Gal	3	39.75	12.63	0.00	3.72	41.73	13.77	(13.95)	10.25	2.73	2.85	\$113.48	40.79	12.63	0.00	1.61	17.53	4.48	(1.69)	22.30	10.25	2.73	2.85	\$113.48	\$0.00	0.0%	\$125.23			
65Gal	4	48.98	16.84	0.00	4.96	55.64	18.36	(18.60)	13.13	3.50	3.65	\$146.46	50.26	16.84	0.00	2.14	23.38	5.97	(2.25)	29.84	13.13	3.50	3.65	\$146.46	\$0.00	0.0%	\$161.53			
65Gal	5	58.22	21.05	0.00	6.20	69.55	22.95	(23.25)	16.02	4.27	4.45	\$179.46	59.74	21.05	0.00	2.68	29.22	7.46	(2.82)	37.39	16.02	4.27	4.45	\$179.46	\$0.00	0.0%	\$197.84			
65Gal	6	67.43	25.26	0.00	7.44	83.46	27.54	(27.90)	18.90	5.04	5.25	\$212.42	69.19	25.26	0.00	3.21	35.07	8.96	(3.38)	44.92	18.90	5.04	5.25	\$212.42	\$0.00	0.0%	\$234.12			

		July 1, 2024 Current MF Refuse Rate With Recycling & Bulky Item Collection												July 1, 2025 Proposed MF Refuse Rate With Recycling & Bulky Item Collection														
																										7/1/2025 vs. 7/1/2024	7/1/2025 vs. 7/1/2024	
Bin	Size	Freq	WDA		Per Yard		Per Yard	FW Fee	Flat	Flat	Flat	Total	CPI %	WDA		Per Yard		Per Yard	FW Fee	2025	Flat	Flat	Flat	Total	7/1/2025 vs. 7/1/2024	7/1/2025 vs. 7/1/2024	218	
			Lbs/Yrd	\$ -	\$ 0.38	\$ 4.28								\$ 1.68	\$ 1.41	\$ 42.07	\$ -											\$ 0.38
3.48%	120	Windy	Compliance	Recycling	Fee	Bulky	FW Fee	Franchise	AB939	HazMat	Total	2.61%	120	Windy	Compliance	Recycling	Fee	FW Fee	Stabilization	Franchise	AB939	HazMat	Total					
Service	Landfill	Day	Fee	Recycling	Fee	Bulky	FW Fee	Fee	AB939	HazMat	Rate	Service	Landfill	Day	Fee	Recycling	Fee	FW Fee	Stabilization	Franchise	AB939	HazMat	Rate					
1.5	1	66.93	16.41	0.00	2.47	27.82	10.92	9.17	13.26	3.53	3.68	\$154.19	68.68	16.41	0.00	2.47	26.98	10.92	6.89	1.37	13.26	3.53	3.68	\$154.19	\$0.00	0.0%	\$172.04	
1.5	2	83.26	32.81	0.00	4.94	55.64	21.84	18.33	19.82	5.28	5.50	\$247.42	85.44	32.81	0.00	4.94	53.95	21.84	13.78	4.06	19.82	5.28	5.50	\$247.42	\$0.00	0.0%	\$275.59	
1.5	3	102.28	49.22	0.00	7.41	83.46	32.76	27.50	26.72	7.13	7.43	\$343.91	104.95	49.22	0.00	7.41	80.93	32.76	20.67	6.69	26.72	7.13	7.43	\$343.91	\$0.00	0.0%	\$382.81	
1.5	4	121.25	65.63	0.00	9.88	111.28	43.68	36.66	33.64	8.97	9.35	\$440.34	124.42	65.63	0.00	9.88	107.90	43.68	27.56	9.31	33.64	8.97	9.35	\$440.34	\$0.00	0.0%	\$489.94	
1.5	5	140.19	82.04	0.00	12.35	139.10	54.60	45.83	40.54	10.82	11.27	\$536.74	143.86	82.04	0.00	12.35	134.88	54.60	34.45	11.93	40.54	10.82	11.27	\$536.74	\$0.00	0.0%	\$597.07	
1.5	6	159.21	98.44	0.00	14.82	166.92	65.52	54.99	47.46	12.66	13.19	\$633.21	163.37	98.44	0.00	14.82	161.85	65.52	41.34	14.56	47.46	12.66	13.19	\$633.21	\$0.00	0.0%	\$704.27	
2	1	93.74	21.88	0.00	3.29	37.09	14.56	12.22	18.30	4.88	5.09	\$211.05	96.19	21.88	0.00	3.29	35.97	14.56	9.19	1.70	18.30	4.88	5.09	\$211.05	\$0.00	0.0%	\$235.50	
2	2	134.36	43.75	0.00	6.59	74.19	29.12	24.44	29.58	7.89	8.22	\$358.14	137.87	43.75	0.00	6.59	71.93	29.12	18.37	4.82	29.58	7.89	8.22	\$358.14	\$0.00	0.0%	\$399.17	
2	3	174.93	65.63	0.00	9.88	111.28	43.68	36.66	40.86	10.90	11.35	\$505.17	179.50	65.63	0.00	9.88	107.90	43.68	27.56	7.91	40.86	10.90	11.35	\$505.17	\$0.00	0.0%	\$562.76	
2	4	215.56	87.51	0.00	13.17	148.37	58.24	48.88	52.14	13.91	14.49	\$652.27	221.20	87.51	0.00	13.17	143.87	58.24	36.75	10.99	52.14	13.91	14.49	\$652.27	\$0.00	0.0%	\$726.44	
2	5	256.22	109.38	0.00	16.47	185.47	72.80	61.10	63.43	16.92	17.62	\$799.41	262.92	109.38	0.00	16.47	179.83	72.80	45.93	14.11	63.43	16.92	17.62	\$799.41	\$0.00	0.0%	\$890.16	
2	6	296.76	131.26	0.00	19.76	222.56	87.36	73.32	74.70	19.93	20.76	\$946.41	304.52	131.26	0.00	19.76	215.80	87.36	55.12	17.20	74.70	19.93	20.76	\$946.41	\$0.00	0.0%	\$1,053.71	
3	1	110.75	32.81	0.00	4.94	55.64	21.84	18.33	23.51	6.27	6.53	\$280.62	113.65	32.81	0.00	4.94	53.95	21.84	13.78	3.34	23.51	6.27	6.53	\$280.62	\$0.00	0.0%	\$312.89	
3	2	156.33	65.63	0.00	9.88	111.28	43.68	36.66	38.40	10.24	10.67	\$482.77	160.42	65.63	0.00	9.88	107.90	43.68	27.56	8.39	38.40	10.24	10.67	\$482.77	\$0.00	0.0%	\$537.60	
3	3	201.90	98.44	0.00	14.82	166.92	65.52	54.99	53.29	14.21	14.81	\$684.90	207.18	98.44	0.00	14.82	161.85	65.52	41.34	13.44	53.29	14.21	14.81	\$684.90	\$0.00	0.0%	\$762.32	
3	4	247.53	131.26	0.00	19.76	222.56	87.36	73.32	68.19	18.19	18.95	\$887.12	254.00	131.26	0.00	19.76	215.80	87.36	55.12	18.49	68.19	18.19	18.95	\$887.12	\$0.00	0.0%	\$987.13	
3	5	293.12	164.07	0.00	24.70	278.20	109.20	91.65	83.09	22.16	23.09	\$1,089.28	300.78	164.07	0.00	24.70	269.75	109.20	68.90	23.54	83.09	22.16	23.09	\$1,089.28	\$0.00	0.0%	\$1,211.87	
3	6	338.69	196.89	0.00	29.64	333.84	131.04	109.98	97.97	26.14	27.23	\$1,291.42	347.55	196.89	0.00	29.64	323.70	131.04	82.68	28.58	97.97	26.14	27.23	\$1,291.42	\$0.00	0.0%	\$1,436.59	

Burrtec Waste Industries
City of Rialto
Commercial Rate Adjustment - Greenwaste

		July 1, 2024 Current Rate Components						July 1, 2025 Proposed Rate Components						7/1/2025 vs. 7/1/2024 Increase		218 Notice
Bin		CPI% 3.48%	\$ 63.77	Flat Franchise	Flat AB939	Flat HazMat	Total Rate	CPI% 2.61%	\$ 65.63	Flat Franchise	Flat AB939	Flat HazMat	Total Rate	7/1/2025 vs. 7/1/2024 Increase	7/1/2025 vs. 7/1/2024 Increase	
Size	Freq	Service	Processing	Fee				Service	Processing	Fee				\$	%	
35Gal	1	20.60	6.32	2.01	0.54	0.56	\$ 30.03	21.14	6.51	2.01	0.54	0.56	\$ 30.76	\$0.73	2.43%	\$32.72
35Gal	2	33.37	12.65	3.37	0.90	0.94	\$ 51.23	34.24	12.65	3.37	0.90	0.94	\$ 52.10	\$0.87	1.70%	\$55.79
35Gal	3	43.59	18.97	4.68	1.25	1.31	\$ 69.80	44.73	18.97	4.68	1.25	1.31	\$ 70.94	\$1.14	1.63%	\$76.01
35Gal	4	54.05	25.30	6.00	1.60	1.67	\$ 88.62	55.46	25.30	6.00	1.60	1.67	\$ 90.03	\$1.41	1.59%	\$96.49
35Gal	5	69.38	31.62	7.32	1.95	2.04	\$ 112.31	71.19	31.62	7.32	1.95	2.04	\$ 114.12	\$1.81	1.61%	\$122.29
35Gal	6	74.60	37.95	8.63	2.30	2.40	\$ 125.88	76.55	37.95	8.63	2.30	2.40	\$ 127.83	\$1.95	1.55%	\$137.07
65Gal	1	20.69	11.74	4.01	1.07	1.12	\$ 38.63	21.23	12.09	4.01	1.07	1.12	\$ 39.52	\$0.89	2.30%	\$43.85
65Gal	2	33.46	23.49	6.73	1.79	1.88	\$ 67.35	34.33	23.49	6.73	1.79	1.88	\$ 68.22	\$0.87	1.29%	\$73.45
65Gal	3	43.67	35.23	9.36	2.49	2.61	\$ 93.36	44.81	35.23	9.36	2.49	2.61	\$ 94.50	\$1.14	1.22%	\$101.82
65Gal	4	54.13	46.98	11.99	3.19	3.34	\$ 119.63	55.55	46.98	11.99	3.19	3.34	\$ 121.05	\$1.42	1.19%	\$130.46
65Gal	5	69.47	58.72	14.63	3.89	4.07	\$ 150.78	71.29	58.72	14.63	3.89	4.07	\$ 152.60	\$1.82	1.21%	\$164.41
65Gal	6	74.68	70.47	17.26	4.59	4.80	\$ 171.80	76.63	70.47	17.26	4.59	4.80	\$ 173.75	\$1.95	1.14%	\$187.34
1.5	1	66.93	31.25	12.27	3.27	3.41	\$ 117.13	68.68	32.16	12.27	3.27	3.41	\$ 119.79	\$2.66	2.27%	\$132.81
1.5	2	83.26	62.49	17.85	4.76	4.96	\$ 173.32	85.44	64.32	17.85	4.76	4.96	\$ 177.33	\$4.01	2.31%	\$196.44
1.5	3	102.28	93.10	23.79	6.34	6.61	\$ 232.12	104.95	95.82	23.79	6.34	6.61	\$ 237.51	\$5.39	2.32%	\$264.46
1.5	4	121.25	124.35	29.71	7.93	8.26	\$ 291.50	124.42	127.98	29.71	7.93	8.26	\$ 298.30	\$6.80	2.33%	\$332.42
1.5	5	140.19	155.60	35.65	9.51	9.90	\$ 350.85	143.86	160.14	35.65	9.51	9.90	\$ 359.06	\$8.21	2.34%	\$400.33
1.5	6	159.21	186.85	41.59	11.09	11.55	\$ 410.29	163.37	192.30	41.59	11.09	11.55	\$ 419.90	\$9.61	2.34%	\$467.60
3	1	110.76	62.49	21.42	5.71	5.95	\$ 206.33	113.66	64.32	21.42	5.71	5.95	\$ 211.06	\$4.73	2.29%	\$233.53
3	2	156.35	124.35	34.20	9.13	9.51	\$ 333.54	160.44	127.98	34.20	9.13	9.51	\$ 341.26	\$7.72	2.31%	\$379.63
3	3	201.90	186.85	47.00	12.54	13.06	\$ 461.35	207.18	192.30	47.00	12.54	13.06	\$ 472.08	\$10.73	2.33%	\$524.93
3	4	247.51	248.70	59.81	15.95	16.62	\$ 588.59	253.98	255.96	59.81	15.95	16.62	\$ 602.32	\$13.73	2.33%	\$671.10
3	5	293.12	311.20	72.60	19.37	20.18	\$ 716.47	300.78	320.27	72.60	19.37	20.18	\$ 733.20	\$16.73	2.34%	\$816.48
3	6	338.69	373.05	85.41	22.78	23.73	\$ 843.66	347.55	383.94	85.41	22.78	23.73	\$ 863.41	\$19.75	2.34%	\$962.56

150	bin lbs yrd
85	lbs per 65 gal barrel

150	bin lbs yrd
85	lbs per 65 gal barrel

Burrtec Waste Industries
City of Rialto
Rolloff Rate Adjustment

		July 1, 2024 Current Rate Components									July 1, 2025 Proposed Rate Components											
Size	Tons	CPI %	WDA	Per Load	Per Load	Per Load					CPI %	WDA	Per Load	Per Load	Per Load					7/1/2025 vs. 7/1/2024 Increase \$	7/1/2025 vs. 7/1/2024 Increase %	218 Notice
		3.48%	\$ 42.07	\$ 6.08	\$ 12.22	\$ 3.51																
		Service	Disposal	Recycling	FW Fee	SB1383 Compliance Fee	Flat Franchise Fee	Flat AB939	Flat HazMat	Rate	Service	Disposal	Recycling	FW Fee	SB1383 Compliance Fee	Flat Franchise Fee	Flat AB939	Flat HazMat	Rate			
<u>Permanent Trash</u>																						
40 Yard - 6 ton	6	247.83	252.42	6.08	12.22	3.51	83.01	22.14	23.06	\$650.27	254.31	252.42	5.25	9.19	3.51	83.01	22.14	23.06	\$652.89	\$2.62	0.40%	\$747.32
20 Yard - 6 ton	6	247.83	252.42	6.08	12.22	3.51	83.01	22.14	23.06	\$650.27	254.31	252.42	5.25	9.19	3.51	83.01	22.14	23.06	\$652.89	\$2.62	0.40%	\$747.32
10 Yard - 8 ton	8	247.83	336.56	6.08	12.22	3.51	99.76	26.61	27.72	\$760.29	254.31	336.56	5.25	9.19	3.51	99.76	26.61	27.72	\$762.91	\$2.62	0.34%	\$877.12
40 Yard - 8 ton (compactor)	8	257.55	336.56	6.08	12.22	3.51	101.04	26.95	28.08	\$771.99	264.28	336.56	5.25	9.19	3.51	101.04	26.95	28.08	\$774.86	\$2.87	0.37%	\$890.25
40 Yard w/Retractable Lid	8	257.55	336.56	6.08	12.22	3.51	101.04	26.95	28.08	\$771.99	264.28	336.56	5.25	9.19	3.51	101.04	26.95	28.08	\$774.86	\$2.87	0.37%	n/a
Waste to Energy 40Yrd Compactor																						
Taken to MRF		247.83	Actual	6.08	12.22	3.51	32.74	8.74	9.10	\$320.22	254.31	Actual	5.25	9.19	3.51	32.74	8.74	9.10	\$322.84	\$2.62	0.82%	\$357.93
Taken to SERRF		1,016.33	Actual	6.08	12.22	3.51	106.84	28.50	29.69	\$1,203.17	1,042.90	Actual	5.25	9.19	3.51	106.84	28.50	29.69	\$1,225.88	\$22.71	1.89%	\$1,349.63
<u>Temporary Trash</u>																						
40 Yard - 6 ton	6	283.36	252.42			3.51	87.70	23.39	24.37	\$674.75	290.77	252.42			3.51	87.70	23.39	24.37	\$682.16	\$7.41	1.10%	\$775.70
20 Yard - 6 ton	6	283.36	252.42			3.51	87.70	23.39	24.37	\$674.75	290.77	252.42			3.51	87.70	23.39	24.37	\$682.16	\$7.41	1.10%	\$775.70
10 Yard - 8 ton	8	283.36	336.56			3.51	104.46	27.86	29.02	\$784.77	290.77	336.56			3.51	104.46	27.86	29.02	\$792.18	\$7.41	0.94%	\$905.49
Excess Disposal			42.07				8.38	2.23	2.33	\$55.01		42.07				8.38	2.23	2.33	\$55.01	\$0.00	0.00%	\$61.81
<u>Permanent Recycling</u>																						
Cardboard, Metal - Rolloff (plus disposal)		175.94	Actual				23.24	6.20	6.46	\$211.84	180.54	Actual				23.24	6.20	6.46	\$216.44	\$4.60	2.17%	\$237.94
Wood/GW/FW/Inert/Comp. (plus disposal)		247.83	Actual				32.74	8.74	9.10	\$298.41	254.31	Actual				32.74	8.74	9.10	\$304.89	\$6.48	2.17%	\$335.18
C&D-Rolloff - 6 ton (plus disposal)	6	247.83	Actual				83.01	22.14	23.06	\$376.04	254.31	Actual				83.01	22.14	23.06	\$382.52	\$6.48	1.72%	\$422.41
Additional Services:																						
Liner Roll Off		117.32					13.71	3.66	3.81	\$138.50	120.39					13.71	3.66	3.81	\$141.57	\$3.07	2.22%	\$155.56
RO Retractable Lid (monthly fee)		240.51					83.01	22.14	23.06	\$368.72	246.80					83.01	22.14	23.06	\$375.01	\$6.29	1.71%	\$155.56
Compactor Rental (monthly fee)		240.51					83.01	22.14	23.06	\$368.72	246.80					83.01	22.14	23.06	\$375.01	\$6.29	1.71%	n/a
End Dump (rate per hour)		220.29	Actual				83.01	22.14	23.06	\$348.50	226.05	Actual				83.01	22.14	23.06	\$354.26	\$5.76	1.65%	n/a
Receiver Rental (per month)		220.29								n/a	245.96					75.92	n/a	21.09	\$342.97	n/a	n/a	n/a

RENTAL CHARGES:
Permanent Boxes
A minimum of four (4) loads per month is needed for boxes to be serviced on a permanent basis.
Temporary Boxes
Rates will be rounded to the nearest dollar.

Burrtec Waste Industries
City of Rialto
Additional Services Rate Adjustment

Service	July 1, 2024 Current Rate	July 1, 2025 Proposed Rate	7/1/2025 vs. 7/1/2024		218 Notice
			Incr \$	%	
<u>Bulky Item</u>					
Trip Charge-Includes 2 items	\$31.08	\$31.89	\$0.81	2.61%	\$33.74
Per Item Charge-above 2 items	\$12.43	\$12.75	\$0.32	2.57%	\$13.49
<u>Extra Pick Up</u>					
Residential/Commercial Barrel	\$24.87	\$25.52	\$0.65	2.61%	\$27.00
Commercial Bin	\$43.51	\$44.65	\$1.14	2.62%	\$47.24
Compactor Bin	\$72.08	\$73.96	\$1.88	2.61%	\$78.27
<u>Additional Barrels -Residential</u>					
Refuse	\$7.44	\$7.63	\$0.19	2.55%	\$8.08
Recycling	\$2.26	\$2.32	\$0.06	2.65%	\$2.45
Organics	\$8.35	\$8.57	\$0.22	2.60%	n/a
<u>Barrel Roll Out Service Fee</u>	n/a	\$42.77	n/a	n/a	n/a
<u>Additional Barrels -Commercial</u>					
Recycling	\$5.75	\$5.90	\$0.15	2.61%	\$6.24
Greenwaste	\$8.32	\$8.54	\$0.22	2.64%	\$9.03
<u>Barrel Exchange</u> (one exchange per year at no charge, does not apply to graffiti or damaged barrels	\$19.65	\$20.16	\$0.51	2.60%	\$21.34
<u>Bin Exchange</u> (one exchange per year at no charge, does not apply to graffiti or damaged bins	\$98.21	\$100.78	\$2.57	2.62%	\$106.64
<u>Barrel Replacement</u> lost or stolen	\$84.62	\$86.83	\$2.21	2.61%	\$91.88
<u>Bin Replacement</u> + actual cost of bin lost or stolen	\$108.79	\$111.63	\$2.84	2.61%	\$118.13
<u>Tilthopper</u>	\$42.32	\$43.43	\$1.11	2.62%	\$45.95
<u>Bin Service</u> Locking Lid	\$4.83	\$4.96	\$0.13	2.69%	\$5.25
<u>Temporary Bin</u> 3 cubic yard - 7 days use Dump and return	\$123.16 \$113.53	\$126.38 \$116.50	\$3.22 \$2.97	2.61% 2.62%	\$133.73 \$123.27
<u>Contamination Fee</u>					
Recycling Bin	\$56.50	\$57.98	\$1.48	2.62%	\$61.35
FW Bin	\$79.79	\$81.88	\$2.09	2.62%	\$86.64
GW Bin	\$66.50	\$68.24	\$1.74	2.62%	\$72.21
Recycling Barrel	\$27.95	\$28.68	\$0.73	2.61%	\$30.35
FW Barrel	\$69.79	\$71.88	\$2.09	2.99%	\$75.41
GW Barrel	\$56.50	\$58.24	\$1.74	3.08%	\$60.97
<u>Roll Off</u>					
Container Rental Fee	\$178.60	\$183.27	\$4.67	2.61%	\$193.93
Relocation Fee	\$60.44	\$62.02	\$1.58	2.61%	\$65.62
Steam Clean Compactor Fee	\$179.86	\$184.56	\$4.70	2.61%	\$195.29
Dry Run	\$91.64	\$94.04	\$2.40	2.62%	\$99.50
<u>Certificate of Destruction</u>	\$149.69	\$153.60	\$3.91	2.61%	\$162.54
<u>RO Clean Up (15 Minutes)</u>	\$45.80	\$47.00	\$1.20	2.62%	\$49.72

CPI

3.48%

2.61%

Burrtec Waste Industries
City of Rialto - 2025 Rates
City Fees Annual Revenue

Annual City Fees Change	Franchise				Total
	PM	Fee	AB939	HazMat	
Residential 60 Gal Tax Roll	\$ -	\$ 754,517	\$ 84,802	\$ 82,627	\$ 921,946
Residential 40 Gal Tax Roll	-	18,746	2,169	2,114	23,029
Residential 60 Gal	-	79,790	8,766	8,541	97,096
Residential 40 Gal	-	7,972	899	876	9,746
MF 60 Gal	-	15,421	1,694	1,651	18,766
Commercial Refuse Equalized	-	421,681	112,452	117,170	651,302
Commercial FW Equalized	-	23,411	6,239	6,508	36,158
MF Refuse w/Bulky Equalized	-	306,227	81,657	85,092	472,976
GW	n/a	13,007	3,468	3,619	20,093
Total	\$ -	\$ 1,640,771	\$ 302,145	\$ 308,197	\$ 2,251,112

	<u>2024</u>	<u>YoY</u>
AB939	\$ 296,289	\$ 5,856
HHW	\$ 302,383	\$ 5,814
FF	\$ 1,597,390	\$ 43,381
PM	\$ -	\$ -
Total	\$ 2,196,062	\$ 55,050

CPI for All Urban Consumers (CPI-U) Original Data Value

Series Id: CUURS49CSA0

Not Seasonally Adjusted

Series All items in Riverside-San Bernardino-Ontario, CA, all
Title: urban consumers, not seasonally adjusted

Area: Riverside-San Bernardino-Ontario, CA

Item: All items
Base DECEMBER 2017=100
Period:

Years:
2022 to 2024

Year	Jan	Feb	Mar	Apr	May	Jun	Jul	Aug	Sep	Oct	Nov	Dec	Annual	Increase
2022	118.963		122.127		123.893		125.262		125.272		125.983		123.784	8.70%
2023	127.683		127.707		128.768		129.525		131.372		131.372		129.545	4.65%
2024	131.358		133.144		133.943		133.113		133.179		132.853		132.932	2.61%



City of Rialto Utilities Commission

2025 Solid Waste Rate Adjustment





State Mandated Compliance Update

- Assembly Bill 341 – requires certain businesses and multi-family residential dwellings to Recycle
- Assembly Bill 1826 – requires certain businesses and multi-family residential to Recycle Organics
- Senate Bill 1383 – expands Recycling & Organics programs, mandates procurement, and requires residential and multi-family Food Waste collection
- Enforcement – The CalRecycle Jurisdiction and Agency Compliance and Enforcement Branch (JACE) is evaluating the City.



Education & Outreach



BURRTEC
"We'll Take Care Of It"

Solid Waste and Recycling Container Guide for Multifamily Properties



TRASH GUIDE

YES	NO
✓ Cactus	✗ Batteries
✓ Clothing	✗ Electronics
✓ Diapers	✗ Hazardous waste
✓ Dishware	✗ Hot ashes
✓ Flower pots	✗ Flammables
✓ Hoses	✗ Food waste
✓ Plastic bags or wrap	✗ Fluorescent bulbs
✓ Pet food bags	✗ Landscape waste
✓ Pet waste	✗ Machinery
✓ Plastic toys	✗ Paint
✓ Plastic utensils	✗ Pesticides
✓ Shrink wrap	✗ Recyclables
✓ Soiled paper products	✗ Sharps
✓ Straws	✗ Tires
✓ Wipes	

HOW TO COLLECT FOOD WASTE AT HOME

1 COLLECT
Begin collecting food waste separate from your other trash and recycling. This includes: fruits, vegetables, meat, seafood, bread, dairy, eggshells, coffee, plate scrapings, peels, rinds, and food soiled paper such as paper towels, napkins, and coffee filters.

2 ADD & SECURE
Collect food waste in a plastic bag. Store it in a convenient place, such as on your countertop, in your refrigerator or under your sink. Secure your plastic bag by tying it off. Remember, bags do not have to be compostable or biodegradable. They can be any color. We encourage you to re-use bags you may already have such as bread bags and produce bags.

3 DISCARD
Place your bagged food waste into your green barrel, along with your green waste. Your green organic waste barrel should be located next to or in the bin enclosure. Remember, food waste no longer belongs in your trash barrel.



RECYCLING GUIDE

YES	NO
✓ Aerosol cans (empty)	✗ Batteries
✓ Aluminum cans	✗ Bubble wrap
✓ Brochures	✗ Carpet
✓ Cardboard	✗ Clothing
✓ Cartons	✗ Diapers
✓ Catalogs	✗ Dishware
✓ Computer paper	✗ Electronics
✓ Envelopes	✗ Furniture
✓ Glass bottles & jars	✗ Hoses
✓ Junk mail	✗ Mirrors
✓ Newspaper	✗ Pet food bags
✓ Paper products	✗ Pizza boxes
✓ #1 - #7 Plastics	✗ Plastic bags or wrap
✓ Styrofoam	✗ Plastic toys
✓ Tin cans	✗ Soiled paper products
✓ Tissue boxes	✗ Tires
✓ Wrapping paper	✗ Wire hangers



ORGANICS GUIDE

YES	NO
✓ Bagged food soiled paper & cardboard*	✗ Batteries
✓ Bagged food waste	✗ Cactus
✓ Birds of Paradise	✗ Concrete
✓ Dead plants	✗ Diapers
✓ Flowers	✗ Electronics
✓ Grass clippings	✗ Flammables
✓ Leaves	✗ Glass
✓ Livestock manure	✗ Hazardous waste
✓ Palm fronds	✗ Liquids
✓ Prunings & twigs	✗ Metal
✓ Shrub trimmings	✗ Pet waste
✓ Small branches	✗ Plastic
✓ Untreated wood	✗ Rocks
✓ Weeds	

*Such as fast food wrappers and pizza boxes

Contact Information
Customer Service Phone: 909-477-1396
Customer Service Email: rfvmail@burrtec.com



BURRTEC
"We'll Take Care Of It"

Solid Waste and Recycling Container Guide for Multifamily Properties

Black Barrel
is for trash
Barril Negro
es para basura



**DO NOT ADD HAZARDOUS WASTE
NO AÑADE RESIDUOS PELIGROSOS**

**TRASH GUIDE
GUÍA DE BARRIL NEGRO**

YES	NO
✓ Cactus	✗ Batteries
✓ Clothing	✗ Electronics
✓ Diapers	✗ Flammables
✓ Dishware	✗ Fluorescent bulbs
✓ Flower pots	✗ Food waste
✓ Hoses	✗ Hazardous waste
✓ Plastic bags or wrap	✗ Hot ashes
✓ Pet food bags	✗ Landscape waste
✓ Pet waste	✗ Machinery
✓ Plastic toys	✗ Oil
✓ Plastic utensils	✗ Paint
✓ Shrink wrap	✗ Pesticides
✓ Soiled paper products	✗ Recyclables
✓ Straws	✗ Sharps
✓ Wipes	✗ Tires

Blue Barrel
is for recyclables
Barril Azul
es para reciclables



**DO NOT BAG RECYCLABLES
POR FAVOR NO EMBOSE RECYCLABLES**

**RECYCLING GUIDE
GUÍA BARRIL AZUL**

YES	NO
✓ Aerosol cans (empty)	✗ Batteries
✓ Aluminum cans	✗ Bubble wrap
✓ Brochures	✗ Carpet
✓ Cardboard	✗ Clothing
✓ Cartons	✗ Diapers
✓ Catalogs	✗ Dishware
✓ Computer paper	✗ Electronics
✓ Envelopes	✗ Furniture
✓ Glass bottles & jars	✗ Hoses
✓ Junk mail	✗ Mirrors
✓ Newspaper	✗ Pet food bags
✓ Paper products	✗ Pizza boxes
✓ #1 - #7 Plastics	✗ Plastic bags or wrap
✓ Tin cans	✗ Plastic toys
✓ Tissue boxes	✗ Soiled paper products
✓ Wrapping paper	✗ Stuffed animals
	✗ Wax paper

Green Barrel
is for green & food waste
Barril Verde
es para desechos verdes y desechos de comida



**REMEMBER!
Bring your food waste and place in your green barrel!**
**RECORDATORIO!
Embolsa los desechos de comida y colócalos en su barril verde!**

**PLEASE BAG FOOD WASTE
POR FAVOR EMBOSE LOS DESCHOS DE COMIDA**

**ORGANICS GUIDE
GUÍA BARRIL VERDE**

YES	NO
✓ Bagged food waste	✗ Batteries
✓ Bagged food soiled paper & cardboard*	✗ Cactus
✓ Birds of Paradise	✗ Concrete
✓ Dead plants	✗ Dirt
✓ Flowers	✗ Electronics
✓ Grass clippings	✗ Flammables
✓ Leaves	✗ Glass
✓ Livestock manure	✗ Hazardous waste
✓ Palm fronds	✗ Liquids
✓ Prunings & twigs	✗ Metal
✓ Shrub trimmings	✗ Pet waste
✓ Small branches	✗ Plastic
✓ Untreated wood	✗ Rocks
✓ Weeds	

*Such as fast food wrappers and pizza boxes

FAQs
Residential Food Waste Recycling Program

Am I required to participate?
Yes. This is a California law that requires all residents, multi-family tenants, and commercial businesses to participate in food waste recycling in order to comply with Senate Bill 1383.

Will plastic bags be supplied?
Customers will be required to use their own bags. Bags do not need to be compostable or biodegradable.

What is the benefit of recycling food waste?
Your recycling efforts contribute to the reduction of greenhouse gas emissions in landfilled organic waste. This includes methane, a greenhouse gas 80 times more potent than carbon dioxide.

I already backyard compost, do I have to participate?
We encourage you to continue backyard composting. Organic items not suitable for backyard compost can be recycled through this program.

Can I use my garbage disposal instead?
No need to change your current garbage disposal use. Food currently being discarded in your trash barrel should now be bagged and placed in your green organic container.

What items are acceptable?
Fruits, vegetables, meat, seafood, dairy, eggshells, bread, food scraps, food soiled paper, plate scrapings, and expired food.

What items are not acceptable?
Trash, styrofoam, liquids, glass, plastic, metal, diapers, pet waste, electronic waste, and hazardous waste.

BURRTEC
"We'll Take Care Of It"

BURRTEC.COM



New Legislation

Changes to CRV Law

Starting Jan. 1, 2024



New Beverages

Wine • Liquor • Juice



Subject to CRV (with or without CRV Label)

New Wine & Liquor Containers

Pouches • Boxes • Cartons



Subject to CRV (with or without CRV Label)



5¢ CRV

Less than 24 oz.



10¢ CRV

24 oz. or More

Glass • Aluminum • Plastic • Bimetal Containers



25¢ CRV

Bag-in-Box • Multi-Layer Pouch
Paperboard Carton • Plastic Pouch

Bag-in-boxes must be intact as a single unit
(bladder, spout, and cardboard) to be eligible for CRV

On June 30, 2022, Governor Gavin Newsom signed [SB 54 \(Allen, Chapter 75, Statutes of 2022\)](#) into law to address the impacts of single-use packaging and plastic food service ware. This landmark packaging law requires that by 2032 we:

Cut By



25%

Single-use plastic:

- Packaging and
- Food ware

Recycle



65%

Of single-use plastic:

- Packaging and
- Food ware

Ensure



100%

Of single-use:

- Packaging
- Plastic food ware

Is recyclable or
compostable



Contamination Monitoring



**BURRTEC**
"We'll Take Care Of It"



**MANDATORY STATE LAW
BARREL INSPECTIONS ARE HERE**
**OBLIGATORIA LEY ESTATAL LAS
INSPECCIONES DE BARRILES ESTÁN AQUÍ**



We found the following contamination:
Encontramos la siguiente contaminación:

☐

1. Trash/Basura
Such as animal waste, plastic bags, wrappers, diapers
Como desechos de mascotas, bolsas de plástico,
envoltorios y pañales
→ **BLACK BARREL ONLY**
BARRIL NEGRO SOLAMENTE

☐

2. Recyclables/Reciclables
Rigid plastics, glass, metal, paper and cardboard
Plásticos rígidos, vidrio, metal, papel y cartón
→ **BLUE BARREL ONLY**
BARRIL AZUL SOLAMENTE

☐

3. Food Waste/Desechos de Comida
Includes food soiled paper, food waste must be bagged
Incluye papel manchado de comida, los desechos de
comida deben embolsarse
→ **GREEN BARREL ONLY**
BARRIL VERDE SOLAMENTE

☐

4. Green Waste/Desechos Verdes
Must be unbagged
Deben de estar desembolsados
→ **GREEN BARREL ONLY**
BARRIL VERDE SOLAMENTE

☐

**5. Electronics or Hazardous Waste/
Electrónicos o Residuos Peligrosos**
Batteries, paint, and electronics are not allowed in any barrel
No se permiten baterías, pintura ni electrónicos en ningún barril
→ **NOT ALLOWED IN ANY BARREL**
NO SON PERMITIDOS EN NINGUN BARRIL

☐

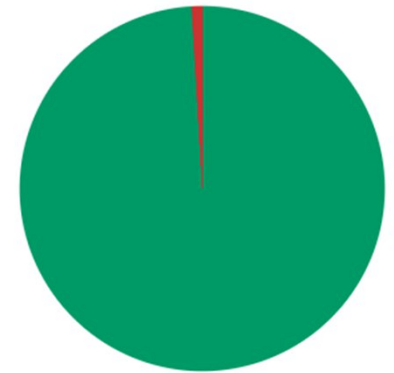
**6. Great Job! No Contamination Found
¡Gran trabajo! No se encontró contaminación**
Thank you for disposing items in the proper barrel. As our thanks,
you will be entered into a random drawing to win \$100. Winners
will be contacted directly.
Gracias por desechar los artículos en el barril adecuado. Como
agradecimiento, participará en un sorteo realizado al azar para ganar
\$100. Los ganadores serán contactados directamente.



Compliance Goals

- Maintain compliance with Mandatory Commercial/Multi-family Recycling (AB 341) and Mandatory Commercial Organics (AB 1826)
- Maintain and continue to implement 1383 Short-Lived Climate Pollution program elements to meet state mandates
- Expand the use of compost and mulch at City facilities and with local partners to meet the 100% Recovered Organic Waste Product target of 4,759 tons of compost.

■ 99% Compliant | ■ 1% Not Compliant





2025 Rate Adjustment Impacts

- Service Consumer Price Index
- Disposal And Processing Cost Components
- SB 1383 Program Impacts



Residential Rate Adjustment History

- 2020 – No Adjustment; Defer the rate adjustment until 2021
- 2021 - Revised - 2020 deferral over two years, 2021 & 2022
- 2022 - No adjustments; Defer the rate adjustment and 2020 residential recovery to 2023
- 2023 - Rate adjustments include the 2020 recovery, 2022 deferment, and SB 1383 program.
- 2024 – No Adjustment; Defer the rate adjustment until 2025
- 2025 – Revised - 2024 deferral over two years, 2025 & 2026



Disposal and Processing

Current and new costs for refuse disposal and organic waste and recyclable materials processing.

Cost Component (per Ton)	Current	New	Change
Trash	\$ 42.07	\$ 42.07	\$ -
Organics	\$ 89.57	\$ 93.15	\$ 3.58
Recyclables	\$ 79.30	\$ 83.40	\$ 4.10



Residential Rates

2025 – Basic residential service costs

Monthly Charge			
Service Level	Current Rate	Proposed 2025	Amount Change
60 Gallon Tax Roll	\$ 33.88	\$ 35.87	\$ 1.99
40 Gallon Tax Roll	\$ 33.11	\$ 34.18	\$ 1.07
Senior Tax Roll	\$ 28.14	\$ 29.05	\$ 0.91

****Note: Rates Do NOT Exceed Prop 218 Notice For Year 2025-2026**



Commercial & Multi-Family Rates

Monthly Charge			
Service Level	Current Rate	Proposed 2025	Amount Change
3 Yard Trash Bin (Includes Recycling)	\$ 240.19	\$ 250.24	\$ 10.05
65 Gallon Food Waste Barrel	\$ 46.74	\$ 46.74	\$ -
Multi-Family 3 Yard Bin (Includes Bulky Item Collection)	\$ 280.62	\$ 280.62	\$ -

****Note: Rates Do NOT Exceed Prop 218 Notice For Year 2025-2026**



Rate Adjustment Request

- Request City of Rialto Utilities Commission Recommend the Adoption of the Municipal Solid Waste Collection, Recycling, Organics and Disposal Rates for Fiscal Year 2025/2026.



Questions ?





City of Rialto

Legislation Text

File #: UC-25-0351, **Version:** 1, **Agenda #:**

For Utilities Commission Meeting [May 20, 2025]

TO: Honorable Utilities Commission Members

APPROVAL: John Rossi, Interim Utilities Director

FROM: Amy Crow, Administrative Analyst

Monthly Activity Report for City of Rialto Waste Management Services

BACKGROUND:

The City of Rialto Municipal Code Chapter 2.24 establishes and defines the Rialto Utilities Commission. The responsibilities assigned to the Commission include acting “as an advisor to the City Council and City Administration regarding solid waste policies, recycling, source reduction, and other related state mandates.” This report provides general information to the Commission on the activities and events for the Maintenance and Facilities Department’s Waste Management Division.

ANALYSIS/DISCUSSION:

Items relating to the City’s Solid Waste Management services and of interest to the Commission are as follows:

- **Hazardous Household Waste** - During the month of April:
 - 305 residents served,
 - 400 gallons of used motor oil,
 - 11 pallets of paint,
 - 15 drums of miscellaneous poisons and other toxic liquids,
 - 6 barrels of sharps, including needles, lancets, and syringes used by residents for their home healthcare and medical needs

During the month of May, the Household Hazardous Waste site was open on 2nd and 3rd and the 16th and 17th from 8 am until 12 noon.

- **Community Clean-Up Day** - April 12, 2025.

Collection Data:

Used Tire Collection = 249

Electronic Waste Drop-off = 8,110 lbs.

Personal Document Shredding = 8,300 lbs.

Salvation Army Donation Drop-off = 1 full truck

Trash = 55.16 tons

Green Waste = 12.74 tons

Metals = 3.35 tons

Inerts = 8.71 Tons

- **Burrtec Waste Tonnage Report** - Available tonnage reports will be distributed at the meeting.

RECOMMENDATION:

Staff recommends the Utilities Commission receive this report for the month of May, 2025.



City of Rialto

Legislation Text

File #: UC-25-0345, **Version:** 1, **Agenda #:**

For Utilities Commission Meeting May 20, 2025

TO: Honorable Chairperson and Commission

APPROVAL: John Rossi, Interim Utilities Director

FROM: Nicole Hemmans, Senior Administrative Analyst

Veolia's Monthly Operations Report - May 2025 (Reporting period March 2025).

RECOMMENDATION

Staff recommends that the Utilities Commission receive and file this report for May 2025.

Utility Commission Report

MAY 2025

Reporting period March 2025



RIALTO
CUSTOMER SERVICE & REVENUE
MONTHLY OPERATIONS REPORT

Reporting Period:

March 2025

Prepared for: Rialto Water Services

Prepared by: Veolia Water West Operating Services



RIALTO WATER

MONTHLY OPERATIONS REPORT

Reporting Period:

March 2025

Prepared for: Rialto Water Services

Prepared by: Veolia Water West Operating Services

RIALTO WATER

OPERATIONS AND MAINTENANCE REPORT

Contents

I.	EXECUTIVE SUMMARY	3
A.	Water Production Totals	4
B.	Static Water Levels	6
II.	REGULATORY	7
A.	Regulatory Submittals	7
B.	Sample Site Location Results	11
C.	Violations	13
D.	Source Water Total Dissolved Solids (TDS)	13
III.	HEALTH AND SAFETY	13
A.	Monthly Safety Program Overview	13
IV.	CHEMICAL USE	13
V.	ELECTRICAL USE	14
VI.	WATER QUALITY COMPLAINTS	14
VII.	OPERATIONS UPDATE	14
A.	Operational Wells	15
B.	Valve Activity	15
C.	Hydrant Flushing	15
D.	Sanitary Survey	16
VIII.	ASSET MANAGEMENT	16
A.	Main Breaks, Service Leaks, Adverse Water Quality and Health/Safety Issues	16
B.	Major Equipment and/or Machinery Outages	16
IX.	RAINFALL TOTALS	17

RIALTO WATER

MONTHLY OPERATIONS REPORT

I. EXECUTIVE SUMMARY

Highlights of this month's Water O&M report include the following:

- The water distribution network achieved compliance with all permit requirements.
- No sample anomalies that require secondary sampling.
- No significant issues with water availability. The purchasing of water remained consistent and daily equalization tanks levels remained at anticipated volume for customer availability.
- The Preventative Maintenance Program, as well as Valve Exercising, continues to identify areas of focus for our Routine Repair and Replacement.

A. Water Production Totals

Total water delivered into the Rialto system this month was 718.89 acre-feet. 538.79 acre-feet was delivered into the system from the groundwater wells (City 4A production is included in the well total). 73.32 acre-feet was delivered via the BLF transmission system (City 4A production has been deducted). 106.78 acre-feet came from the OPRTP.

MARCH 2025 DAILY PRODUCTION TOTALS IN ACRE FEET											
							Delivered Via BLF				
							City 4A	Purchased			
DATE	Chino 2	City 2	Rialto 3	Rialto 5	Miro 3	EW-1	City 4A	BOOSTER 6-9	Cactus ¹	OPRTP ²	TOTAL ³
3/1/25	5.99	7.84	0.00	0.00	0.00	6.04	0.00	2.13	0.02	4.68	26.70
3/2/25	5.60	6.42	0.00	0.00	0.00	6.02	0.00	0.00	1.50	4.41	23.95
3/3/25	5.16	7.08	0.00	0.00	0.00	5.62	0.00	0.44	0.02	4.52	22.84
3/4/25	5.99	4.29	0.00	0.00	0.02	6.31	0.00	0.00	0.01	4.72	21.34
3/5/25	4.15	0.00	0.00	0.00	0.00	5.23	0.00	8.79	0.01	4.51	22.69
3/6/25	4.94	0.00	0.00	0.00	0.00	5.67	4.16	4.91	0.01	2.30	17.83
3/7/25	5.67	0.00	0.00	0.00	0.00	6.19	1.06	7.80	0.01	0.00	19.67
3/8/25	5.42	0.00	0.00	0.00	0.00	5.46	8.43	4.02	10.49	0.20	25.59
3/9/25	4.38	0.00	0.00	0.00	0.00	5.91	4.75	5.35	5.11	4.45	25.20
3/10/25	5.92	0.00	0.00	0.00	0.00	5.70	6.53	7.99	0.00	5.16	24.77
3/11/25	4.73	0.00	0.00	0.00	0.00	5.86	3.44	7.28	0.01	3.68	21.56
3/12/25	5.69	0.14	0.00	0.00	0.00	6.59	1.55	5.62	0.01	4.33	22.38
3/13/25	6.34	0.00	0.00	0.00	0.00	4.73	1.57	4.50	2.71	3.94	22.22
3/14/25	5.19	0.00	0.00	0.00	0.00	5.82	0.00	0.00	2.16	0.00	13.17
3/15/25	4.77	6.70	0.00	0.00	0.00	5.93	0.00	0.00	6.80	0.00	24.20
3/16/25	4.96	12.17	0.00	0.00	0.00	6.80	0.00	0.00	3.49	1.45	28.87
3/17/25	5.21	8.12	0.00	0.00	0.00	5.17	0.00	1.56	0.71	3.39	24.16
3/18/25	1.03	8.00	0.00	0.00	0.00	6.46	0.00	0.00	0.00	3.17	18.66
3/19/25	0.00	7.92	0.00	0.00	0.00	4.87	0.00	0.41	0.01	3.86	17.07
3/20/25	0.00	9.41	0.00	0.00	0.00	6.00	0.00	3.54	0.00	3.54	22.49
3/21/25	0.23	10.21	0.00	0.00	0.00	6.12	0.00	0.00	3.02	4.69	24.27
3/22/25	5.03	7.46	0.00	0.00	0.11	5.96	0.00	0.00	0.82	4.28	23.66
3/23/25	4.25	7.29	0.00	0.00	4.18	5.34	0.00	0.00	0.00	5.58	26.64
3/24/25	5.76	9.65	0.00	0.00	4.70	5.60	0.00	0.34	2.61	4.51	33.17
3/25/25	5.76	4.06	0.00	0.00	4.81	6.14	0.00	4.18	0.01	3.49	28.45
3/26/25	4.98	1.63	0.00	0.00	4.98	5.50	1.41	2.13	0.01	4.53	23.76
3/27/25	4.48	0.00	0.00	0.00	4.83	5.64	0.00	2.48	0.04	0.54	18.01
3/28/25	6.66	0.00	0.00	0.00	4.33	5.62	2.39	0.00	0.04	3.65	20.30
3/29/25	5.07	0.00	0.00	0.00	5.39	5.91	9.41	4.66	0.84	3.01	24.88
3/30/25	4.34	0.00	0.00	0.00	5.38	6.30	0.00	2.87	0.10	6.75	25.74
3/31/25	5.36	0.00	0.00	0.00	4.69	5.61	9.10	5.54	0.01	3.44	24.65
TOTAL	143.06	118.39	0.00	0.00	43.42	180.12	53.80	86.54	40.58	106.78	718.89
MIN	0.00	0.00	0.00	0.00	0.00	4.73	0.00	0.00	0.00	0.00	13.17
MAX	6.66	12.17	0.00	0.00	5.39	6.80	9.41	8.79	10.49	6.75	33.17
AVE	4.61	3.82	0.00	0.00	1.40	5.81	1.74	2.79	1.31	3.44	23.19

¹ Measured at point of connection at Cactus Reservoir site including production from City 4A. Amount may vary compared to billing.

² Measured at point of connection at Cedar Reservoir site. Amount may vary as compared to billing.

³ City 4A is not included in total. It has been accounted for in the Purchased total.

MARCH 2025 DAILY BOOSTER TOTALS IN ACRE FEET								
DATE	Booster 1	Booster 2	Booster 3	Booster 4	Booster 5	Booster 6-9	Booster 10	Booster 11
3/1/25	0.00	0.00	10.06	0.00	0.00	2.13	0.00	0.00
3/2/25	0.00	0.00	6.56	0.00	1.48	0.00	0.00	0.00
3/3/25	0.00	0.00	5.51	0.00	0.00	0.44	0.00	0.00
3/4/25	0.00	0.00	6.06	0.00	0.00	0.00	0.00	0.00
3/5/25	0.00	0.00	3.26	0.00	0.00	8.79	0.00	0.00
3/6/25	0.00	0.00	4.85	0.00	0.00	4.91	0.00	0.00
3/7/25	0.00	0.00	9.09	0.00	0.00	7.80	0.00	0.00
3/8/25	0.00	0.00	2.44	0.00	10.48	4.02	0.00	0.00
3/9/25	0.00	0.00	0.69	0.00	5.10	5.35	0.00	0.00
3/10/25	0.00	0.00	7.72	0.00	0.00	7.99	0.00	0.00
3/11/25	0.00	0.00	3.41	0.00	0.00	7.28	0.00	0.00
3/12/25	0.00	0.00	5.42	0.00	0.00	5.62	0.00	0.00
3/13/25	0.00	0.00	2.60	0.00	2.70	4.50	0.00	0.00
3/14/25	0.00	0.00	0.00	0.00	2.15	0.00	0.00	0.00
3/15/25	0.00	0.00	6.47	0.00	6.79	0.00	0.00	0.00
3/16/25	0.00	0.00	10.31	0.00	3.49	0.00	0.00	0.00
3/17/25	0.00	0.00	6.64	0.00	0.71	1.56	0.00	0.00
3/18/25	0.00	0.00	1.65	0.00	0.00	0.00	0.00	0.00
3/19/25	0.00	0.00	8.11	0.00	0.00	0.41	0.00	0.00
3/20/25	0.00	0.00	3.63	0.00	0.00	3.54	0.00	0.00
3/21/25	0.00	0.00	7.96	0.00	3.02	0.00	0.00	0.00
3/22/25	0.00	0.00	0.34	0.00	0.82	0.00	0.00	0.00
3/23/25	0.00	0.00	0.00	0.00	0.00	0.00	0.00	0.00
3/24/25	0.00	0.00	13.84	0.00	2.61	0.34	0.00	0.00
3/25/25	0.00	0.00	2.96	0.00	0.00	4.18	0.00	0.00
3/26/25	0.00	0.00	3.48	0.00	0.00	2.13	0.00	0.00
3/27/25	0.00	0.00	4.86	0.00	0.00	2.48	0.00	0.00
3/28/25	0.00	0.00	1.96	0.00	0.00	0.00	0.00	0.00
3/29/25	0.00	0.00	0.82	0.00	0.82	4.66	0.00	0.00
3/30/25	0.00	0.00	1.50	0.00	0.02	2.87	0.00	0.00
3/31/25	0.00	0.00	6.60	0.00	0.00	5.54	0.00	0.00
TOTAL	0.00	0.00	148.80	0.00	40.19	86.54	0.00	0.00
MIN	0.00	0.00	0.00	0.00	0.00	0.00	0.00	0.00
MAX	0.00	0.00	13.84	0.00	10.48	8.79	0.00	0.00
AVE	0.00	0.00	4.80	0.00	1.30	2.79	0.00	0.00

B. Static Water Levels

All City of Rialto wells are sounded each month, both active and inactive well sites. Depth-to-water is measured from the well head to the static water surface. Increases in depth-to-water represent a decrease in static water level.

Depth to Water													
Wells Depth to Pump	Historical Maximum Depth to Water	Apr	May	Jun	Jul	Aug	Sept	Oct	Nov	Dec	Jan	Feb	Mar
Chino # 1 (580 ft) In-active well	429'	417'	411'	414'	414'	412'	411'	411'	411'	410'	412'	414'	414'
Chino # 2 (550 ft)	369'	346'	354'	347'	352'	347'	347'	343'	340'	342'	341'	335'	338'
City # 1 (260 ft)	392'	164'	158'	158'	151'	150'	247'	247'	251'	121'	126'	121'	122'
City # 2 (480 ft)	402'	182'	164'	164'	164'	171'	210'	137'	139'	147'	146'	128'	130'
City # 3 (525 ft) Out of Service	505'	423'	423'	423'	418'	417'	416'	416'	417'	414'	414'	415'	416'
City # 4A (528 ft)	406'	373'	373'	374'	380'	379'	380'	380'	380'	381'	374'	377'	375'
City # 5 (385 ft) In-active well	364'	340'	339'	335'	333'	334'	332'	322'	320'	318'	318'	321'	318'
Rialto # 1 (650 ft) In-active well	588'	569'	569'	571'	571'	571'	571'	553'	552'	561'	555'	571'	569'
Rialto # 2 (550 ft) In-active well	502'	500'	500'	501'	500'	501'	502'	501'	501'	499'	501'	496'	495'
Rialto # 3 (509 ft)	478'	474'	475'	474'	477'	477'	473'	476'	473'	472'	473'	473'	472'
Rialto # 4 (450 ft) In-active well	418'	415'	415'	415'	416'	415'	418'	418'	414'	413'	414'	415'	416'
Rialto # 5 (560 ft)	386'	386'	386'	386'	386'	385'	384'	384'	384'	385'	385'	384'	384'
Rialto Well # 7 In-active well	362'	362'	362'	361'	361'	362'	362'	362'	361'	362'	360'	360'	359'
Miro # 3 (563 ft)	492'	487'	488'	487'	489'	487'	485'	485'	484'	484'	484'	484'	484'
EW-1 (780 ft)	476'	476'	476'	473'	474'	475'	474'	473'	475'	475'	474'	472'	475'

II. REGULATORY

All State of California and public health agency regulatory requirements were met.

A. Regulatory Submittals

- Monthly Summary of Distribution System Coliform Monitoring
- NPDES Discharge Letter
- Conservation SAFER Report
- Quarterly Report for Disinfectant Residuals Compliance

Sample Test Result Standards			
Type of Sampling	Units of Measure	Detectable Limit for Reporting	Maximum Contaminant Level
Total Coliform	A	--	--
E. Coli	A	--	--
Nitrate as N	mg/L	0.20	10
Perchlorate (ClO ₄)	µg/L	1.0	6.0
Total Dissolved Solids	mg/L	--	500
Perfluorooctanoic (PFOA)	ng/L	2.0	4
Perfluorooctanesulfonic (PFOS)	ng/L	2.0	4
Arsenic	µg/L	2.0	10
Vinyl Chloride (VC)	µg/L	0.50	0.5
Trichlorofluoromethane (FREON 11)	µg/L	5.0	150
1,1-Dichloroethylene (1,1-DCE)	µg/L	0.50	6
1,1,2-Trichloro-1,2,2-trifluoroethane	µg/L	10	1200
Dichloromethane (Methylene Chloride)	µg/L	0.50	5
trans-1,2-Dichloroethylene (t-1,2-DCE)	µg/L	0.50	10
Methyl tert-Butyl Ether	µg/L	3.0	13
1,1-Dichloroethane (1,1-DCA)	µg/L	0.50	5
cis-1,2-Dichloroethylene (c-1,2-DCE)	µg/L	0.50	6
Chloroform (Trichloromethane)	µg/L	1.0	--
Carbon Tetrachloride	µg/L	0.50	0.5
1,1,1-Trichloroethane (1,1,1-TCA)	µg/L	0.50	200
Benzene	µg/L	0.50	1
1,2-Dichloroethane (1,2-DCA)	µg/L	0.50	0.5

Trichloroethylene (TCE)	µg/L	0.50	5
1,2-Dichloropropane	µg/L	0.50	5
Bromodichloromethane	µg/L	1.0	--
Toluene	µg/L	0.50	150
Tetrachloroethylene (PCE)	µg/L	0.50	5
1,1,2-Trichloroethane (1,1,2-TCA)	µg/L	0.50	5
Dibromochloromethane	µg/L	1.0	--
Monochlorobenzene (Chlorobenzene)	µg/L	0.50	70
Ethyl Benzene	µg/L	0.50	300
m,p-Xylene	µg/L	1.0	--
cis-1,3-Dichloropropene	µg/L	0.50	--
o-Xylene	µg/L	0.50	--
trans-1,3-Dichloropropene	µg/L	0.50	--
Styrene	µg/L	0.50	100
Bromoform	µg/L		1.0
1,1,2,2-Tetrachloroethane	µg/L		0.50
1,4-Dichlorobenzene (p-DCB)	µg/L	0.50	5
1,2-Dichlorobenzene (p-DCB)	µg/L	0.50	600
1,2,4-Trichlorobenzene	µg/L	0.50	5
Total 1,3-Dichloropropene	µg/L	0.50	0.5
Total Trihalomethanes (TTHM)	µg/L	1.0	80
Total Xylenes (m,p & o)	µg/L	0.50	1750
P= Present A= Absent mg/L = parts per million µg/L = parts per billion ng/L = parts per trillion			

Sample Date 03/26/2025	Sample Site Location Results									
	Chino 2	City 2	City 4A	Rialto 3	Rialto 5	Miro 3	EW-1	BLF Cactus	BLF 6- 9	OPRT P
Total Coliform	A	A	A	A	A	A	A	A	A	A
E. Coli	A	A	A	A	A	A	A	A	A	A
Nitrate as N	3.0	1.9	1.5							
Perchlorate (CLO ₄)	1.8*			7.5*		12*	140*			
Total Dissolved Solids	190	210	320	230	230	210	240	270	290	190
Perfluorooctanoic (PFOA)	<2.0				5.8**					
Perfluorooctanesulfonic (PFOS)	<2.0				<2.0					
Arsenic		5.3								
Vinyl Chloride (VC)		<0.50	<0.50							
Trichlorofluoromethane (FREON 11)		<5.0	<5.0							
1,1-Dichloroethylene (1,1-DCE)		<0.50	<0.50							
1,1,2-Trichloro-1,2,2-trifluoroethane		<10	<10							
Dichloromethane (Methylene Chloride)		<0.50	<0.50							
trans-1,2-Dichloroethylene (t-1,2-DCE)		<0.50	<0.50							
Methyl tert-Butyl Ether		<3.0	<3.0							
1,1-Dichloroethane (1,1-DCA)		<0.50	<0.50							
cis-1,2-Dichloroethylene (c-1,2-DCE)		<0.50	<0.50							
Chloroform (Trichloromethane)		<1.0	<1.0							
Carbon Tetrachloride		<0.50	<0.50							
1,1,1-Trichloroethane (1,1,1-TCA)		<0.50	<0.50							
Benzene		<0.50	<0.50							
1,2-Dichloroethane (1,2-DCA)		<0.50	<0.50							
Trichloroethylene (TCE)		0.57	<0.50							
1,2-Dichloropropane		<0.50	<0.50							
Bromodichloromethane		<1.0	<1.0							
Toulene		<0.50	<0.50							
Tetrachloroethylene (PCE)		<0.50	<0.50							
1,1,2-Trichloroethane (1,1,2-TCA)		<0.50	<0.50							
Dibromochloromethane		<1.0	<1.0							

Monochlorobenzene (Chlorobenzene)		<0.50	<0.50							
Ethyl Benzene		<0.50	<0.50							
m,p-Xylene		<1.0	<1.0							
cis-1,3-Dichloropropene		<0.50	<0.50							
o-Xylene		<0.50	<0.50							
trans-1,3-Dichloropropene		<0.50	<0.50							
Styrene		<0.50	<0.50							
Bromoform		<1.0	<1.0							
1,1,2,2-Tetrachloroethane		<0.50	<0.50							
1,4-Dichlorobenzene (p-DCB)		<0.50	<0.50							
1,2-Dichlorobenzene (p-DCB)		<0.50	<0.50							
1,2,4-Trichlorobenzene		<0.50	<0.50							
Total 1,3-Dichloropropene		<0.50	<0.50							
Total Trihalomethanes (TTHM)		<1.0	<1.0							
Total Xylenes (m,p & o)		<0.50	<0.50							

*Sample is from the well head so it is before disinfection & treatment. Treatment is performed before it goes into the distribution system. Water going into the distribution system is <1.0 (non-detect).

**Well is severed from the water distribution system.

B. Sample Site Location Results

Rialto Distribution Sample Results						
March 2025						
Sample Location	Free Cl Res (Field)	Total Coliform	E. Coli	Apparent Color	Odor Threshold	Turbidity
CYCLE 1 - 03/04/25	mg/l	P/A	P/A	Color Units	TON	NTU
335 W. Rialto	0.94	A	A	<3.0	1	<0.10
1228 W. Merrill	1.09	A	A	<3.0	1	<0.10
256 N. Fillmore	1.19	A	A	<3.0	1	<0.10
987 W. Grove	1.04	A	A	<3.0	1	<0.10
978 N. Driftwood	0.98	A	A	<3.0	1	<0.10
1451 N. Linden	1.76	A	A	<3.0	1	<0.10
469 W. Jackson	1.35	A	A	<3.0	1	<0.10
935 E. Mariposa	1.02	A	A	<3.0	1	<0.10
1000 N. Joyce	1.31	A	A	<3.0	1	<0.10
766 N. Chestnut	1.11	A	A	<3.0	1	0.12
149 W. Victoria	1.07	A	A	<3.0	1	<0.10
313 E. McKinley	1.15	A	A	<3.0	1	<0.10
609 E. South	1.10	A	A	<3.0	1	<0.10
273 E. Alru	1.23	A	A	<3.0	1	<0.10
1161 S. Lilac	1.19	A	A	<3.0	1	<0.10
101 E. Valley	1.16	A	A	3.0	1	<0.10
CYCLE 2 - 03/10/25	mg/l	P/A	P/A	Color Units	TON	NTU
210 N. Park	1.06	A	A			
101 S. Larch	1.01	A	A			
320 N. Wisteria	1.11	A	A			
987 W. Grove	1.02	A	A			
1168 N. Glenwood	1.00	A	A			
1320 N. Fitzgerald	1.05	A	A			
860 N. Willow	1.12	A	A			
209 E. Cornell	1.15	A	A			
643 E. Margarita	1.18	A	A			
1170 N. Terrace Rd.	1.02	A	A			
681 E. Erwin	1.03	A	A			
402 E. Merrill	1.10	A	A			
261 W. Wilson	1.08	A	A			
532 S. Iris	1.12	A	A			
281 W. Hawthorne	1.03	A	A			
379 W. Valley	0.68	A	A			

Rialto Distribution Sample Results						
March 2025						
Sample Location	Free Cl Res (Field)	Total Coliform	E. Coli	Apparent Color	Odor Threshold	Turbidity
CYCLE 3 - 03/19/25	mg/l	P/A	P/A	Color Units	TON	NTU
236 N. Willow	0.98	A	A			
775 E. Foothill	0.79	A	A			
878 N. Primrose	0.97	A	A			
369 E. Van Koevinger	1.09	A	A			
274 W. Valencia	1.05	A	A			
1566 N. Fillmore	1.18	A	A			
932 N. Idyllwild	1.07	A	A			
644 N. Smoketree	1.03	A	A			
605 W. Rosewood	1.11	A	A			
1189 W. Second	1.08	A	A			
775 W. Rialto	1.01	A	A			
211 E. Wilson	1.06	A	A			
595 E. Huff	1.00	A	A			
1005 S. Riverside	1.06	A	A			
794 S. Verde	0.86	A	A			
1055 W. Bloomington	0.73	A	A			
CYCLE 4 - 03/25/25	mg/l	P/A	P/A	Color Units	TON	NTU
375 S. Cactus	1.11	A	A			
101 S. Linden	1.08	A	A			
234 N. Larch	0.70	A	A			
575 N. Driftwood	1.14	A	A			
1355 W. Shamrock	1.15	A	A			
992 N. Yucca	1.02	A	A			
481 W. Cornell	1.18	A	A			
158. E. Shamrock	1.15	A	A			
749 E. Holly	1.15	A	A			
545 E. Victoria	1.21	A	A			
200 N. Sycamore	0.73	A	A			
407 E. Allen	1.03	A	A			
399 E. Montrose	1.15	A	A			
856 S. Orange	1.16	A	A			
911 S. Cactus	1.11	A	A			
220 W. Valley	1.18	A	A			
P/A + Present or Absent						

C. Violations

No violations were received during this reporting period.

D. Source Water Total Dissolved Solids (TDS)

Veolia has a goal of maintaining an acceptable blended TDS level between all its sources. This goal is achieved by shifting production to or from the lowest TDS wells or purchased low TDS water while adhering to the overall water supply strategy and meeting system demands. The TDS was 225 mg/L for the month of March as compared to 226 mg/L in February. The TDS levels are below the secondary maximum contaminant level requirements.

III. HEALTH AND SAFETY

A. Monthly Safety Program Overview

Category	Monthly Statistic
Safety Training Topics	Protection from Wildfire Smoke CalOSHA Powered Industrial Truck (including Forklift) LSR Working from Heights
Lost Time Incidents, count*	0
Recordable Incidents, count	0
Near Miss Incidents, count	0
Vehicle Incidents, count	0

*A lost time incident has not occurred in the past 4187 days.

IV. CHEMICAL USE

Sodium hypochlorite is the only chemical added to the water system. A total of 1587 gallons of sodium hypochlorite was used in March as compared to 1716 gallons used in February.

V. ELECTRICAL USE

Southern California Edison (SCE) has not provided the data for March 2025. We will provide the data as it is received, thus will include yearly usage received to date.

SCE		kWh
Year	Month	Billed Usage
2024	January	208,007
2024	February	186,792
2024	March	421,268
2024	April	463,324
2024	May	428,050
2024	June	629,344
2024	July	550,202
2024	August	650,431
2024	September	562,739
2024	October	529,208
2024	November	266,378
2024	December	380,580

VI. WATER QUALITY COMPLAINTS

No complaints were received during this reporting period.

VII. OPERATIONS UPDATE

The overall operational strategy is to meet the daily water demand. The City of Rialto water system has six operational wells, one of which is owned by the County of San Bernardino and operated by Veolia; Oliver P. Roemer Treatment Plant (OPRTP), which is jointly owned by the City (25%) and West Valley Water District (WVWD); purchased water through the Baseline Feeder (BLF) system from San Bernardino Valley Municipal Water District (SBVMWD); and, if required to meet demand, additional water can be supplied by the City of San Bernardino (CSB) through the BLF for emergency supply only with no guarantee of actual delivery. Water produced from City Well 4A discharges into the BLF and its production is included in deliveries from that shared transmission line when City Well 4A is in service.

The overall pumping strategy is based on adjudicated rights, well availability, remediation requirements, and quality of source, cost to operate, and varying weather conditions. TDS effluent concentrations for the City of Rialto WWTP are taken into consideration when operating the facilities and water sources.

A. Operational Wells

All wells were operational.

B. Valve Activity

On the basis of information collected in 2019, Veolia now has a baseline assessment of all valves and has initiated a new cycle of valve exercising. 38 valves were exercised and 2 valves were replaced in the month of March.

Valve Turning Progress	
	Valves Turned
2020	530
2021	340
2022	463
2023	750
2024	379
2025	161

C. Hydrant Flushing

There are 63 hydrant/dead ends that are flushed annually to maintain water quality. Six flushings were performed in March.

Hydrant/Dead End Flushing Progress	
	2025
January	0
February	0
March	6
Total	6
Progress % (10)	

D. Sanitary Survey

DDW performed field site visits on May 22 and August 22, 2024. The results of the sanitary survey were received on September 19, 2024. All minor deficiencies have been corrected and submitted to DDW.

VIII. ASSET MANAGEMENT

The following work orders were completed by Water production staff for the month of March:

- Preventive Maintenance –10
- Corrective Maintenance –0
- Predictive Maintenance –0

52– PMs planned for April 2025

A. Main Breaks, Service Leaks, Adverse Water Quality and Health/Safety Issues

The following work orders were completed by Water distribution staff for the month of March:

- Main line –0
- Service line –2
- Hydrants - 8
- Angle Meter Stop –3
- Meter Box & Lid Replacement –10
- Meter Leaks/ Replacements -12

B. Major Equipment and/or Machinery Outages

All wells were operational.

IX. RAINFALL TOTALS

SEASON	JUL	AUG	SEP	OCT	NOV	DEC	JAN	FEB	MAR	APR	MAY	JUN	TOTAL
2019-20	0.00	0.00	0.00	0.00	0.64	1.52	0.23	0.33	1.18	3.42	0.00	0.00	7.32
2020-21	0.00	0.00	0.00	0.00	0.85	1.02	2.55	0.05	1.13	0.00	0.00	0.00	5.60
2021-22	0.53	0.00	0.00	0.55	0.00	7.27	0.00	0.00	0.77	0.45	0.03	0.00	9.60
2022-23	0.00	0.00	0.24	0.38	2.15	1.80	5.06	4.14	7.73	0.20	0.59	0.00	22.29
2023-24	0.00	2.62	0.00	0.09	0.60	1.18	1.00	10.38	1.87	0.53	0.34	0.00	18.61
2024-25	0.00	0.00	0.00	0.00	0.45	0.00	0.21	3.68	2.47				6.81

Table of Contents

I. CUSTOMER SERVICE SUMMARY.....	3
II. CALL CENTER PERFORMANCE.....	3
III. AUTOMATED SERVICES.....	3
IV. CONSUMPTION & BILLING.....	4
A. Consumption.....	4
B. Billing.....	4
V. REVENUE & AGING.....	5
A. Revenue	5
B. Aging	6
C. Bad Debt.....	7
VI. SERVICE ORDERS	7
VII. OTHER ACTIVITIES	7
VIII. REVENUE REPORT	7
A. Revenue Summary.....	7
B. Non Rate Revenue - Extraterritorial Customers.....	7
C. Non-Rate Revenue – Other	8
D. Development Impact Fees.....	8
E. Rialto Basin Water Rights and Leasing	8
F. Cash Collections by Payment Method – Rialto Water Services.....	10
G. Payment Collection Method – Fiscal Year to Date	11
H. Cash Collections on Behalf of the City of Rialto-Prior Year Comparison.....	11
I. Non-Rate Revenue + Utility Revenue Collections Prior Year Comparison	11
J. Non-Rate Revenue + Utility Revenue Collected Fiscal Year-to-Date.....	12
K. Increase in Cash Collections and Fund Distribution—Prior Year Comparison	12
L. Non-Rate and Extraterritorial Customer Accounts Receivable Aging	13

I. CUSTOMER SERVICE SUMMARY

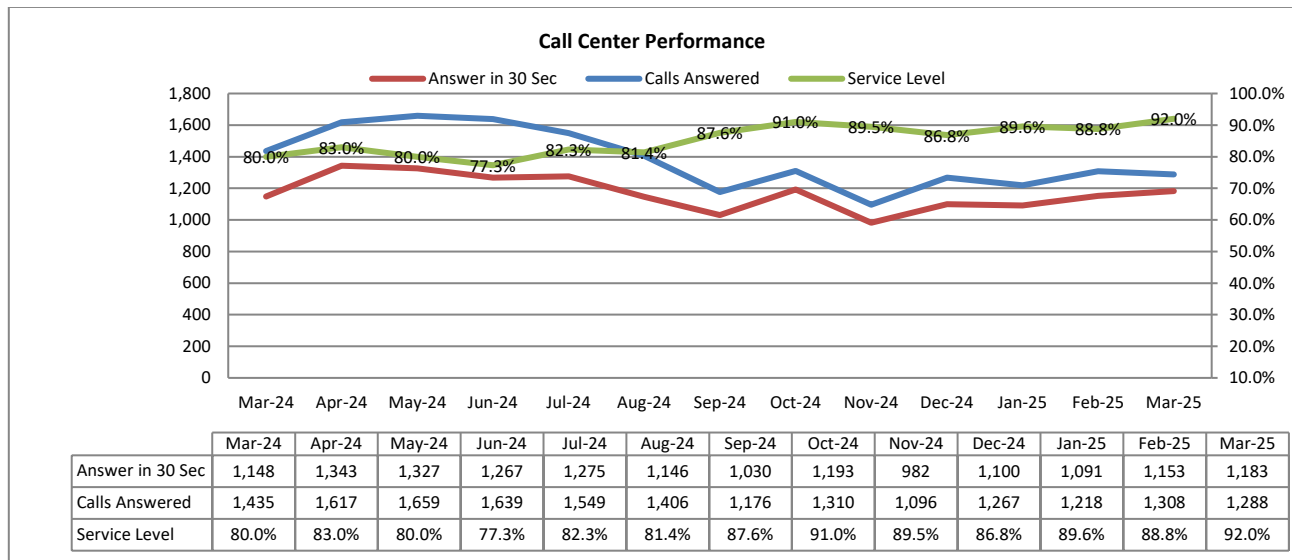
During this reporting month, the Customer Service team provided call service level of 92.0%. Out of 1,288 inbound calls answered 1,183 were answered within the first 30 seconds.

Water consumption has decreased by 28.5% when compared against previous month. When compared against last year, consumption has increased by 1.3%.

Sewer revenue has decreased by 3.5% compared to the prior month and increased by 4.6% from last year.

II. CALL CENTER PERFORMANCE

During this reporting month, service level was 92.0% with 1,183 out of 1,288 being answered within the first 30 seconds. Overall average wait time was forty-six (46) seconds.



III. AUTOMATED SERVICES

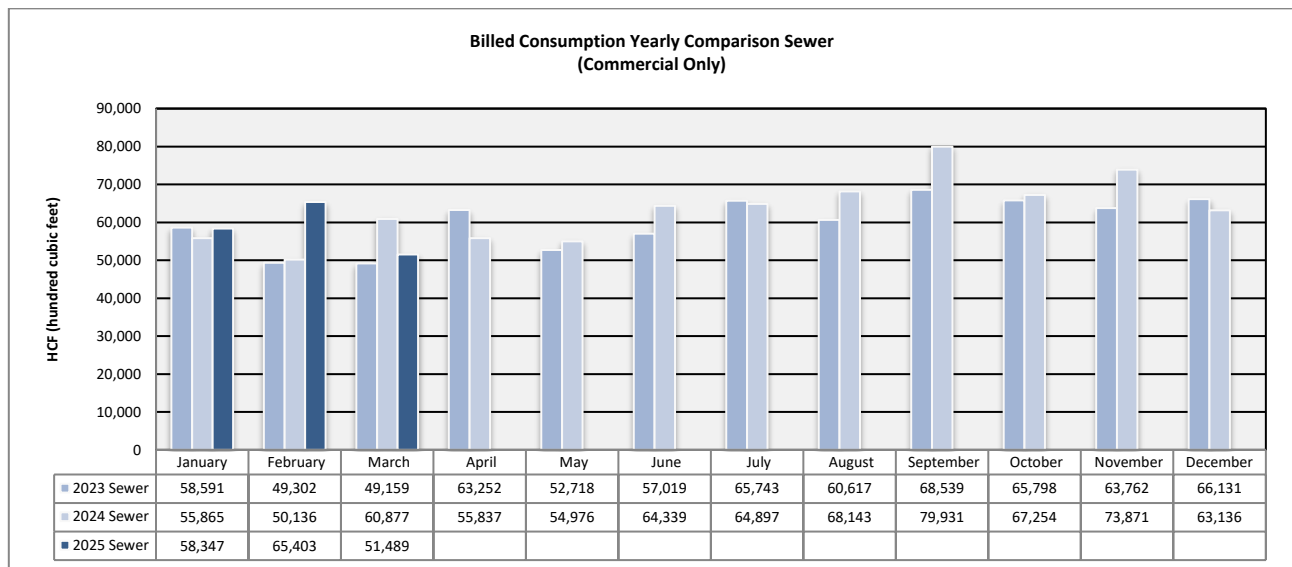
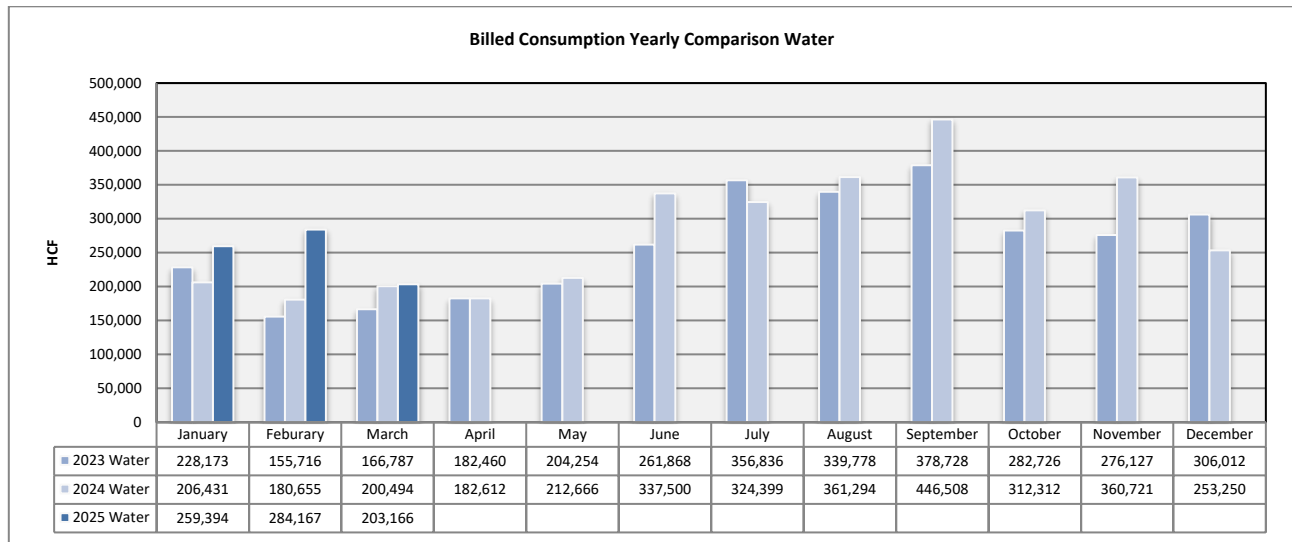
About 22,657 or 55.2% of the rate payers have created log-ins to access their accounts online. Of these customers, with online access, 48.5% have chosen the e-bill option. This e-bill participation is 9.0% increase from March of the prior year.

	Mar-24	Apr-24	May-24	Jun-24	Jul-24	Aug-24	Sep-24	Oct-24	Nov-24	Dec-24	Jan-25	Feb-25	Mar-25
Number of Bills	22,202	22,369	22,331	22,372	22,410	22,425	22,470	22,541	22,571	22,575	22,587	22,604	22,657
Number of Bill Adjustments (during billing)	10	12	16	10	11	9	5	11	9	29	17	10	29
Automated Over the Phone Payments	2,539	2,592	2,382	2,058	2,250	2,310	2,050	2,483	2,092	2,436	2,509	2,040	2,509
Online Payment	7,756	9,888	9,126	7,457	9,828	9,302	7,538	9,302	7,804	10,320	9,747	7,676	9,912
E-bill Participants	5,564	5,610	5,654	5,683	5,731	5,770	5,814	5,855	5,922	5,959	5,997	6,031	6,069
Auto Pay Participants (New Portal)	4,054	4,082	4,129	4,165	4,221	4,273	4,278	4,305	4,343	4,367	4,420	4,467	4,536
PayNearMe	115	118	111	88	114	118	92	95	93	95	108	73	99

IV. CONSUMPTION & BILLING

A. Consumption

Water consumption has decreased by 28.5% when compared against previous month. When compared against last year, consumption has increased by 1.3%. This increase is due to 35 days in February versus 29-days in March.



B. Billing

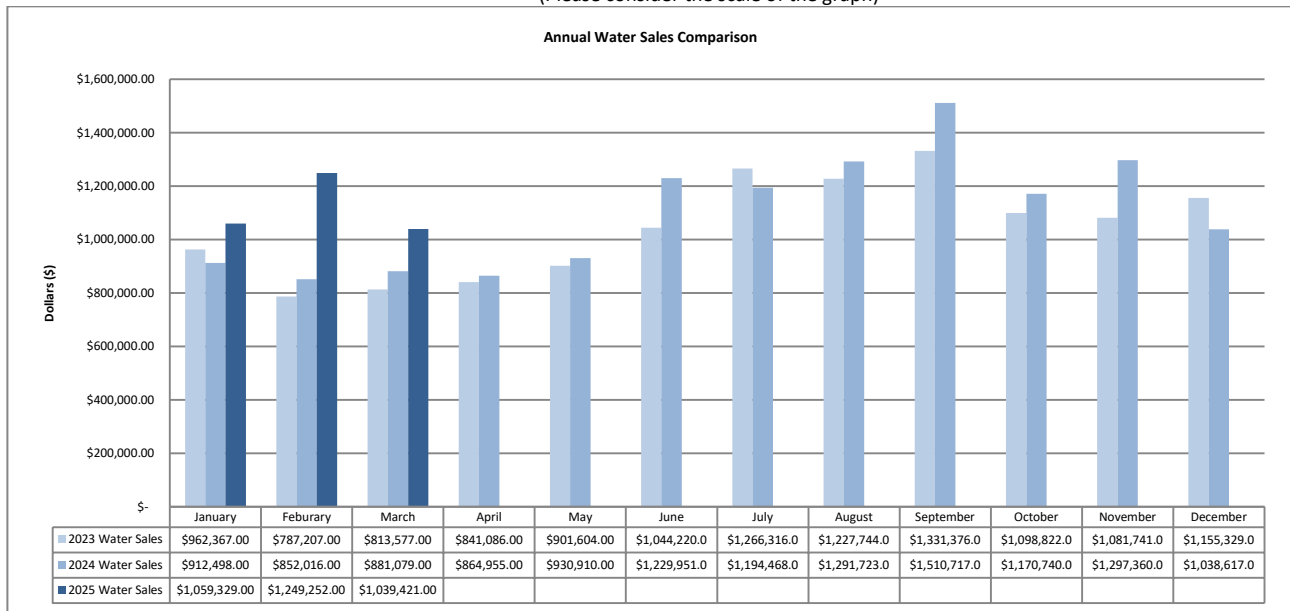
A total of 22,657 bills were mailed or sent out electronically in March. Billing accuracy was 99.87% with twenty-nine (29) requiring adjustments after bill generation.

V. REVENUE & AGING

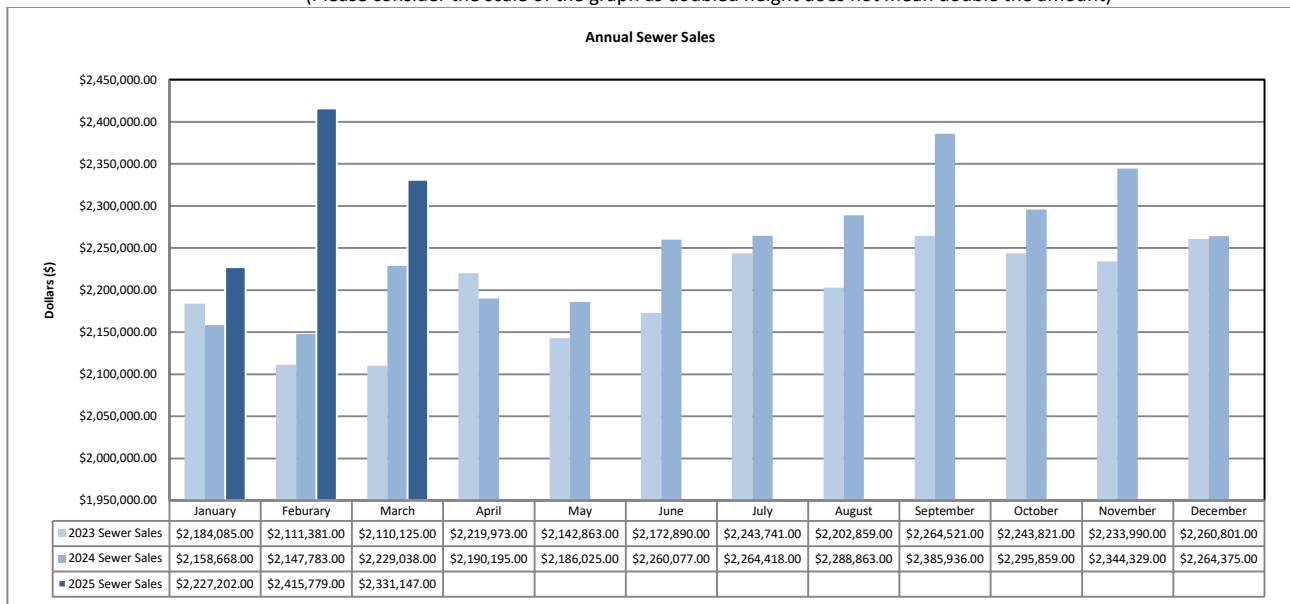
A. Revenue

Water revenue has decreased 16.8% when compared against the prior month and increased 18.0% when compared against previous year. Sewer revenue has decreased by 3.5% compared to the prior month and increased by 4.6% from last year. Increase of revenue in 2025 versus 2024 is due to rate modifications in January.

(Please consider the scale of the graph)

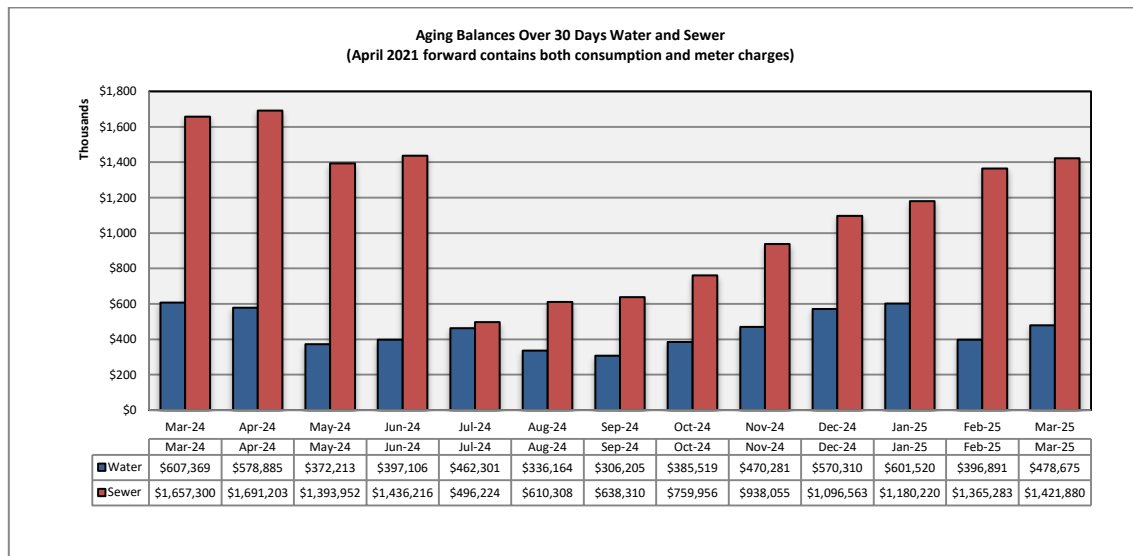
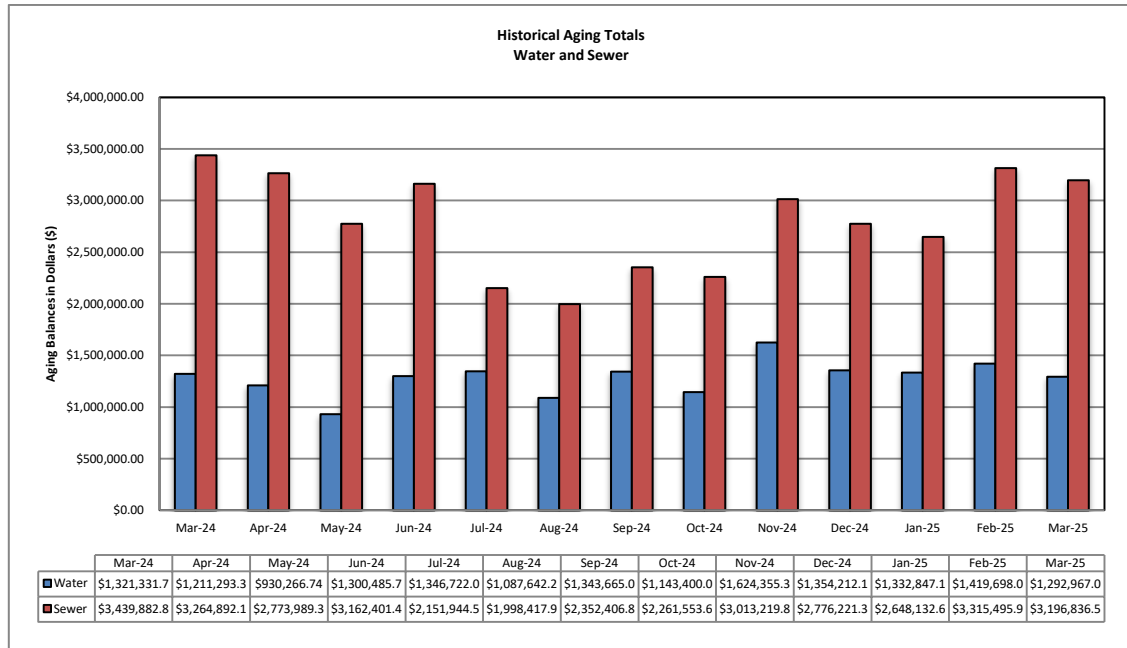


(Please consider the scale of the graph as doubled height does not mean double the amount)



B. Aging

The total aging balance has decreased by 5.2%, *see first table below*. For balances >30-days only, water has increased 20.6% and wastewater has increased by 4.1%.



C. Bad Debt

Twenty (20) accounts were sent to collections for a total amount of \$4,585.91. These collections typically arise when renter or property owner move out without paying their bills.

VI. SERVICE ORDERS

341 service orders were initiated by the customer service team during the reporting month. Of this total, 70 service orders or 20.5% were due to occupant changes.

208 service orders were initiated to accommodate water disconnection for non-payment and reconnection of water services when customer set up (or reinstate) a payment arrangement with down payment.

VII. OTHER ACTIVITIES

Rate changes and UUT exemptions took place starting with the February 2025 bills. Number of calls related to “rate increase” has been minimal. Most of these callers were residents who had minimal water consumption with steady billed amount and/or fixed income.

VIII. REVENUE REPORT

A. Revenue Summary

Cash Revenue is compiled and reconciled to the merchant account on a daily basis. Cash receipts and deposits are made daily and internal controls are reviewed regularly to ensure safeguarding of assets and proper recording of all transactions. Total revenue collected in March 2025 is \$4,040,000 whereas Non-Rate Revenue is \$259,000; Utility Revenue is \$3,686,000 and Tax / Ambulance Revenue at \$95,000.

RWS collects Utility User Taxes and Ambulance Fees on behalf of the City of Rialto. The Utility User Tax (UUT) rates are based on the total billed amount, therefore the collection fluctuates as billed amounts change. The total UUT charges collected in March 2025 and March 2024 are \$90,000 and \$204,000 respectively. Ambulance Revenue is also collected on behalf of the City of Rialto totaling \$5,000 in March 2025 and \$5,000 in March 2024.

B. Non Rate Revenue - Extraterritorial Customers

RWS bills the City of Fontana \$133,000 each month for extraterritorial sewer usage.

Colton Unified School District is in agreement with RWS to pay \$5,000 monthly for sewage connections based on enrollment rates provided each school year.

An extraterritorial agreement to provide sewer service was executed between the City of Rialto and the County of San Bernardino—County Service Area 70, Zone BL (Bloomington). This housing development project generates extraterritorial sewer service revenue of \$20,000 per month.

The City has an agreement with Social Science Services dba Cedar House Life Change Center to provide extraterritorial sewer service providing sewer revenue of about \$5,000 each month.

C. Non-Rate Revenue – Other

Other revenue is generated by leasing space for cell towers to AT&T, which has two leases at \$2,073 and \$1,500. Sprint lease is at a currently contracted rate of \$2,000 each month. Vertical Bridge also provides \$2,400 a month of cell tower generated Revenue.

Rialto Bioenergy Solutions subleased a City property for \$10,750 a month.

The City and San Bernardino Valley Municipal Water District have entered into a Brine Line Capacity Agreement on March 23, 2021. This agreement pertains to the use of its interest in the SARI Line and discharge of certain brine waste to the SARI Line exclusively from the operation of Rialto Bioenergy Facilities within the City’s boundaries. The revenue generated in this agreement consists of quarterly rent of \$37,500 along with the Fixed Pipeline Capacity Fee of \$3,300 per month and Fixed Treatment Plant Capacity Fee of \$3,300 per month. In addition, a variable fee of any discharge costs are also billed.

The San Bernardino Valley Water District (SBVWD) reimburses RWS for water conservation programs provided to customers. A quarterly bill is delivered directly by the City.

D. Development Impact Fees

Development Impact Fees (“DIF”) are paid to the City of Rialto as various developments are completed in the City. As such, the City of Rialto receives monies from the various developments, which is then distributed to RWS. There was no DIF payment received in March of 2024.

E. Rialto Basin Water Rights and Leasing

A Standby Water Lease Agreement between Fontana Union Water Company and City of Rialto is in effect. For the Water 2023-2024 Water Year, RWS received a payment from San Bernardino County the amount of \$332,624 for Standby Charges and Production Charge.

In addition, the County is also billed annually for Rialto Well #3's summertime electricity costs based on peak usage.

F. Cash Collections by Payment Method – Rialto Water Services

Payment Method	Description	Transaction Count	MARCH 2025	%
Carrier Deposits	Cash deposits prepared per day for transport to US Bank	21	\$ 137,735	3.33%
Remote Check Deposits	Scanned batches of checks payments made at the customer service counter	21	471,688	11.39%
EBOX	Batches of electronic customer payments posted to customer accounts at US Bank.	21	312,881	7.56%
PAYMENTUS - IVR / Paymentus / Walk-in Credit Card payment	Customer payments by credit cards and ACH / eCheck payments through an Interactive Voice Response system using a touchtone phone. Payments originated from Merchant online service	14,517	2,179,266	52.65%
Lockbox Deposits	Batches of customer payments mailed in to US Bank's lockbox.	21	1,025,831	24.78%
Pay Near Me	Cash payment service that allows customers to pay at a local 7-Eleven, CVS, or Family Dollar stores.	98	12,063	0.29%
Total Revenue per Bank			\$ 4,139,464	100%
Recon to RUA Recap:				
Adj detailed in RUA			(99,492)	
Prior mo. Correction				
RUA increase in Cash			\$ 4,039,972	

Transaction Counts for Carrier Deposits, Remote Deposits, UB Bill Conc Service (EBOX), and Lockbox Deposits reflect number of batches deposited to the bank. Transaction counts for credit card POS, IVR, and Pay-Near-Me transactions are per number of customer payments. IVR payments are received and process by Paymentus on the day the transactions are made. General ledger are posted and accounted for the following day the payments are processed.

G. Payment Collection Method – Fiscal Year to Date

	Jul 2024	Aug 2024	Sept 2024	Oct 2024	Nov 2024	Dec 2024	Jan 2025	Feb2025	Mar 2025	TOTAL	%
Cash Deposits	\$ 122,310	\$ 116,600	\$ 111,287	\$ 121,951	\$ 89,627	\$ 122,268	\$ 120,688	\$ 117,076	\$ 137,735	\$ 1,059,543	2.98%
Remote Check Deposits	227,143	953,011	383,642	394,629	613,264	685,915	291,981	1,113,745	471,688	\$ 5,135,017	14.44%
EBOX	334,259	346,067	289,347	349,088	288,522	322,671	332,865	252,149	312,881	\$ 2,827,848	7.95%
Paymentus, IVR, Credit Cards	1,827,817	1,855,221	1,688,345	2,034,573	1,499,559	2,049,055	2,011,139	1,553,121	2,179,266	\$16,698,096	46.96%
Lockbox Deposits	1,169,619	1,273,243	1,089,604	1,285,860	903,561	1,175,827	1,098,091	706,631	1,025,831	\$ 9,728,266	27.36%
Pay Near Me	14,561	14,530	10,989	11,968	10,491	12,923	12,774	7,957	12,063	\$ 108,257	0.30%
Total Revenue to Bank	\$ 3,695,709	\$ 4,558,672	\$ 3,573,214	\$ 4,198,068	\$ 3,405,024	\$ 4,368,659	\$ 3,867,538	\$ 3,750,680	\$ 4,139,464	\$35,557,028	100.00%
NSF	(7,962)	(4,947)	(8,970)	(8,950)	(21,124)	(20,764)	(9,479)	(10,322)	(8,496)	\$ (101,013)	
Net deposits	\$ 3,687,747	\$ 4,553,726	\$ 3,564,244	\$ 4,189,118	\$ 3,383,900	\$ 4,347,895	\$ 3,858,059	\$ 3,740,358	\$ 4,130,968	\$35,456,015	

H. Cash Collections on Behalf of the City of Rialto-Prior Year Comparison

	Mar 2025	Mar 2024	Variance
UUT Water	\$ 30,952	\$ 58,465	\$ (27,513)
UUT Sewer	58,902	146,070	(87,168)
Ambulance	5,093	4,995	97
Total	\$ 94,947	\$ 209,531	\$ (114,583)

I. Non-Rate Revenue + Utility Revenue Collections Prior Year Comparison

	Mar 2025	Mar 2024	Variance
Non-Rate / Extra Territorial Revenue	\$ 258,641	\$ 117,745	\$ 140,896
Utility Revenue	\$ 3,686,384	\$ 3,247,186	\$ 439,197
Total	\$ 3,945,025	\$ 3,364,931	\$ 580,094

J. Non-Rate Revenue + Utility Revenue Collected Fiscal Year-to-Date

	Jul 2024	Aug 2024	Sept 2024	Oct 2024	Nov 2024	Dec 2024	Jan 2025	Feb 2025	Mar 2025	TOTAL
Non-Rate Revenue										
Cell Tower Rent, Lease	5,647	19,985	21,506	66,161	55,391	9,235	12,824	29,957	55,985	276,689
Interest Income	19,290	9,559	-	-	-	-	-	-	-	28,850
NRR-FOG	-	-	-	-	-	-	-	-	-	-
Municipal Water Sales	-	-	-	-	332,624	-	-	-	-	332,624
Extra Terr- Sewage	31,463	252,123	161,340	185,039	136,360	128,586	145,544	225,208	159,667	1,425,329
Abatement of Expenses	-	-	-	-	-	-	-	-	-	-
Water Meter Lost/Damaged/Repl	1,419	710	2,129	5,171	-	-	4,924	492	36,930	51,775
Misc Fees - New Occ, Same Day Svc	5,877	4,453	4,939	5,629	3,067	5,525	5,945	6,069	6,060	47,564
Miscellaneous Revenue - Sewer	-	-	-	-	-	-	-	-	-	-
NSF	-	342	-	152	35	-	30	-	-	559
Total Non-Rate Revenue	\$ 63,697	\$ 287,171	\$ 189,913	\$ 262,152	\$ 527,477	\$ 143,345	\$ 169,267	\$ 261,726	\$ 258,641	\$ 2,163,389
Utility Revenue										
Water Penalty	3,154	15,321	10,183	5,903	2,602	720	101	6,016	16,300	60,299
Sewer Penalty	5,200	33,061	18,283	7,639	3,313	1,435	700	11,411	33,426	114,467
Turf Removal, Hi-Eff Rebate	(1,000)	(100)	-	-	-	-	-	-	-	(1,100)
Water Deposits Billed	17,289	8,629	9,906	8,629	8,686	10,057	11,411	11,856	20,052	106,516
Hydrant Deposits	574	-	-	-	420	282	-	-	702	1,978
Sewer Deposits Paid	-	-	-	-	-	-	-	-	-	-
Sewer Deposits Billed	11,760	12,823	9,518	10,900	15,201	8,822	11,737	8,959	18,436	108,156
Water	1,171,886	1,540,256	1,194,449	1,386,681	884,906	1,229,369	1,086,436	1,126,085	1,161,792	10,781,860
Sewer	2,327,246	2,418,456	1,959,890	2,448,917	1,669,263	2,454,711	2,380,281	1,745,679	2,469,796	19,874,238
Unapplied Credits	(101,077)	(54,176)	(140,916)	(81,949)	(69,090)	(35,829)	(43,709)	(83,121)	(42,584)	(652,452)
Bad Debt Sewer	12,029	9,909	-	-	-	-	4,560	-	-	26,499
Bad Debt Water	-	-	-	-	-	-	-	-	-	-
Tax Roll - Sewer	15,596	2,790	-	-	-	22,950	399,116	474,784	8,462	923,698
Collection Agency - Water	-	-	-	-	-	-	-	-	-	-
Collection Agency - Sewer	-	-	-	-	-	-	-	-	-	-
Collection Agency - Misc Water	-	-	-	-	-	-	-	-	-	-
Total Utility Revenue	\$ 3,462,656	\$ 3,986,969	\$ 3,061,313	\$ 3,786,719	\$ 2,515,301	\$ 3,692,515	\$ 3,850,632	\$ 3,301,670	\$ 3,686,384	\$ 31,344,159
Total Non-Rate + Utility Rev.	3,526,353	4,274,141	3,251,226	4,048,871	3,042,778	3,835,861	4,019,899	3,563,396	3,945,025	33,507,548

K. Increase in Cash Collections and Fund Distribution—Prior Year Comparison

	Increase to Cash per CIS	Adjustments Required to GL Cash	Fund 660-Sewer	Fund 670-Water	Total Cash Per GL	Adjustments To Match RUA to Bank	Cash/CC/Cks Deposit To Bank
March 2025	4,039,972	10,648	2,715,224	1,314,100	4,039,972	99,492	4,139,464
March 2024	3,574,462	10,527	2,117,910	1,446,025	3,574,462	35,846	3,610,308

L. Non-Rate and Extraterritorial Customer Accounts Receivable Aging

Name	Total as of 03/31/2025	Current	31-60 days	61-90 days	>90 days
AT&T - Easton	\$ -	-	-	-	-
Social Science Service - Cedar House	-	-	-	-	-
CITY OF FONTANA	133,713	133,713	-	-	-
Colton Unified School District	-	-	-	-	-
County of San Bernardino-CSA 70 BL	20,948	20,948	-	-	-
Rialto BioEnergy Solutions	48,032	37,282	10,750	-	-
Sprint-Nextel SBA 2012 TC Assets	9,331	-	-	-	9,331
San Bernardino Co Waste System Div.	-	-	-	-	-
SB Valley Mun Water District	-	-	-	-	-
Vertical Bridge Holdco, LLC (CIG)	7,544	2,830	-	-	4,714
Grand Total	\$ 219,568	\$ 194,773	\$ 10,750	\$ -	\$ 14,045

AT&T makes annual payment of one cell tower rent and monthly dues on the other. The customer is current with its payments.

Social Science Service (Cedar House) balance reflects current service fees.

City of Fontana is current with its obligations.

Colton Unified School District is current with its obligations.

County of San Bernardino is current with its obligations.

Rialto Bioenergy Solutions RWS shows a current Invoice balance in March.

Vertical Bridge Holdco, LLC and Sprint: Vertical Bridge and Sprint have been contacted for open Invoices as well.

RIALTO WASTEWATER

MONTHLY OPERATIONS REPORT

Reporting Period:
March 2025

Prepared for: - Rialto Water Services



Prepared by: - Veolia Water West Operating Services



RIALTO WASTEWATER OPERATIONS AND MAINTENANCE REPORT

Contents

EXECUTIVE SUMMARY

- 1. Collection System / Customer Service Log**
 - a. Collection System Activities
 - b. S.S.O. dates
 - c. Customer Service Call Outs
- 2. Wastewater Treatment Plant - Monthly Overview**
 - a. Significant events during the month
- 3. Treatment Facility Performance / Laboratory Activities**
 - a. See attached Monthly Performance Summary
 - b. Summary of Notices and Laboratory Tests / Reports filed with government agencies
 - c. Effluent Specifications Exceedance Discussion
- 4. Monthly Safety Program Overview**
- 5. Biosolids, Chemicals, and Utilities**
 - a. Monthly Biosolids Production
 - b. Monthly Chemical Consumption
 - c. Monthly Utilities Consumption
- 6. Odor Complaints / Actions Taken**
- 7. Major Equipment and/or Machinery Outages**
- 8. Outside Agency Activities during the Month**
 - a. Government agency or property insurance inspections
 - b. Government agency environmental, health, or safety tests/monitoring
 - c. Government agency notice of violation received
 - d. Government agency monitoring
 - e. Other matters of concern
- 9. Complaint Logs**

TABLES

- Treatment Facility – Monthly Performance Summary
- Collection System- Monthly Pipe Cleaned

RIALTO WASTEWATER

MONTHLY OPERATIONS REPORT

EXECUTIVE SUMMARY

Highlights of this month's Wastewater O&M report include the following:

- The treatment plant performed well and met all compliance parameters.
- There were six residential call-outs for sewer-related issues.

1. Collection System/Customer Service Log

a. Collections group activities this month:

Category	Current Month Statistics	Prior Month Statistics	2024 Year to Date Statistics
Sanitary sewers are cleaned using the conventional method, including feet, which includes "Hot spot cleaning."	28,972	24,435	64,790
Sanitary sewers assessed using the SL-RAT method, feet	0	0	0
CCTV Inspection, miles (26 is the annual goal)*	4.83	01.88	6.71
Manhole Inspections	2	15	17
USA Dig Alert Markings, count	27	37	104
Residential call outs	6	1	9
Sanitary sewer overflows	0	0	1

b. S.S.O. N/A

c. Customer Service Call Outs – See Item 9 for details.

2. Wastewater Treatment Plant – Monthly Overview

- NPDES discharge compliance parameters were achieved.

a. Significant events during the month were:

O.R.&R. Project WW2425-02 Completed. (Secondary Clarifier #1 Cleaning and Structural Steel Coating)

O.R.&R. Projects WW2324-17 & WW2324-18 progress. All analytical hardware installed and operable. Only S.C.A.D.A. programming needs to be completed to finish the project.

3. Treatment Facility Performance/Laboratory Activities

- a. See the attached Table 1 Monthly Performance Summary.
- b. Summary of Notices and Laboratory Tests/Reports filed with government agencies.
The monthly submittal of State/Federal discharge monitoring reports was completed promptly.
- c. Effluent specification exceedance discussion
See Section 2 above. N/A

4. Monthly Safety Program Overview

Category	Monthly Statistic
Safety Training Topics	6
Lost Time Incidents count*	0
Recordable Incidents, count	0
Near Miss Incidents, count	1
Vehicle Incidents, count	0

*A lost time incident has not occurred since 9-3-2020, totaling 1,669 days.

5. Biosolids, Chemicals, and Utilities

- a. Monthly Biosolids Production

Biosolids	Current Month Statistics	Prior Month Statistics	2024 Year-to-Date Statistics
Wet Tons Produced	1363.77	803.4	3523.77

- b. Monthly Chemical Consumption

Chemical	Current Month Gallons Used	Prior Month Gallons Used
Sodium Hypochlorite, Tertiary Disinfection	26,437	23,865
Sodium Bisulfite, Discharge Dechlorination	10,172	9,937
Ferrous Chloride, Digester Gas Conditioning	4,398	4,038
Polymer, Gravity Belt Thickener	426	442
Polymer, Belt Filter Press	698	550
Alum, Tertiary Filters	16	1

c. Monthly Utilities Consumption

Utility	Current Month Statistics	Prior Month Statistics
Electricity WWTP, KWH	455,101	401249
Electricity Lilac LS, KWH	**	965
Electricity Sycamore LS, KWH	**	539
Electricity Ayala LS, KWH	**	8497
Electricity Agua Mansa LS, KWH	**	5952
Electricity Cactus LS, KWH	**	1719
Electricity Ramrod LS, KWH	654	675
Frisbee Park LS, KWH	**	739
El Rancho Verde LS, KWH	1874	1880
Natural Gas WWTP, Therms	6260	6196

* LS is in bypass mode, pending CIP completion

** SCE has not updated this account.

6. Odor Complaints Received/Actions Taken

No odor complaints were received this month.

7. Major Equipment and/or Machinery Outages

- Sludge Holding Tank
- Aeration Basin #1 is currently offline.

8. Outside Agency Activities during the Month

- a. Government agency or property insurance inspections
None
- b. Government agency environmental, health, or safety tests/monitoring
Permit testing was completed for this month
- c. Government agency notices of violation received
No notices were received.
- d. Government agency monitoring
Routine monitoring reports were submitted.
- e. Other matters of concern
None

9. Customer Service Callout Details Log

Date	Address	Comments	Personnel	Manhole	To Manhole
3/4/2025	2002 Sunnyview	The resident called to report an odor from the sewer line. The line was inspected and was flowing freely. There were no abnormal or strong smells coming from the area. The resident checked the home drains and called a plumber.	BVO	NA	NA
3/12/2025	707 W Mallory	A resident called to report a sewer line blockage. Upon inspection of the main sewer line, it was flowing freely. The resident was advised to call a plumber to have their lateral inspected.	PH	NA	NA
3/16/2025	252 W Woodcrest St	A resident called to report a sewer line blockage. Upon inspection of the main sewer line, it was flowing freely. The resident was advised to call a plumber to have their lateral inspected.	PH	NA	NA
3/18/2025	256 W Cornell	A resident called to report a sewer line blockage. Upon inspection of the main sewer line, it was flowing freely. The resident was advised to call a plumber to have their lateral inspected.	BVO	N/A	N/A
3/20/2025	1314 S Yucca	A resident called to report a sewer line blockage. Upon inspection of the main sewer line, it was flowing freely. The resident was advised to call a plumber to have their lateral inspected.	BVO	N/A	N/A
3/27/2025	1166 S. Riverside	A broken manhole lid was reported on Riverside Ave in the center lane. CP Construction was contacted to evaluate the situation and make the repairs.	ET	330-22	330-27

Table 1 Summary

Table 1 Summary														
						March 2025								
	Rialto	Rialto			Rialto	Rialto WRF Effluent			Rialto WRF Influent		Rialto WRF Effluent			
	Influent daily flow	Effluent Flow	Influent BOD	Influent BOD	Influent BOD Load	Effluent BOD	Effluent BOD Load	BOD % Removal	Influent TSS	Influent TSS Load	Effluent TSS	Effluent TSS Load	TSS % Removal	
Date	MGD	MGD	mg/l	mg/l	lbs/day	mg/L	lbs/day	%	mg/L	lbs/day	mg/L	lbs/day	%	
3/1/2025	6.56	6.93												
3/2/2025	6.69	6.86												
3/3/2025	7.13	7.58	310	310	18,434	5.2	328.73	98.30	200.00	11893.00	1.00	63.00	99.50	
3/4/2025	6.67	6.51												
3/5/2025	6.81	6.97												
3/6/2025	7.78	7.97												
3/7/2025	6.43	7.28	340	340	18,233	3.6	218.57	98.90						
3/8/2025	5.91	7.13												
3/9/2025	6.07	6.86												
3/10/2025	6.25	6.93	300	300	15,638	<2.5	144.49	99.20	260.00	13553.00	2.00	116.00	99.20	
3/11/2025	6.08	7.55												
3/12/2025	5.89	6.94												
3/13/2025	7.35	7.17												
3/14/2025	6.99	7.92	270	270	15,740	2.7	178.34	99.00						
3/15/2025	6.74	6.79												
3/16/2025	7.05	7.21												
3/17/2025	6.82	7.09	410	410	23,320	3.4	201.04	99.20	240.00	13651.00	0.80	47.00	99.70	
3/18/2025	6.79	6.92												
3/19/2025	5.36	7.08												
3/20/2025	6.00	6.68												
3/21/2025	6.54	6.71	330	330	17,999	5.3	296.60	98.40						
3/22/2025	6.60	6.84												
3/23/2025	6.72	7.41												
3/24/2025	6.83	6.98	340	340	19,367	<5.0	291.07	98.50	250.00	14241.00	1.00	58.00	99.60	
3/25/2025	6.81	6.65												
3/26/2025	6.68	7.21												
3/27/2025	6.68	7.29												
3/28/2025	6.72	6.74	450	450	25,220	5.0	281.06	98.90						
3/29/2025	6.56	7.08												
3/30/2025	6.48	7.27												
3/31/2025	6.91	6.94	360	360	20,747				280.00	16136.00				
Minimum	5.36	6.51	270	270	15,638	<2.5	144.49	98.30	200.00	11893.00	0.80	47.00	99.20	
Maximum	7.78	7.97	450	450	25,220	5.3	328.73	99.20	280.00	16136.00	2.00	116.00	99.70	
Total	204.90	219.49	3,110	3,110	174,698	<32.7	1939.90	790.40	1230.00	69473.00	4.80	284.00	398.00	
Average	6.61	7.08	346	346	19,411	<4.1	242.49	98.80	246.00	13895.00	1.20	71.00	99.50	

Table 2 Summary

				Table 2 Summary					
					March 2025				
Date	Rialto	Rialto WRF Effluent	Rialto WRF Eff		Rialto WRF Effluent		Rialto	Rialto	
	Influent Conductivity	Eff Conductivity Daily Ave	Influent COD	Final Effluent COD	Influent TDS	Filter Effluent TDS	EFF FINAL TDS	Influent Inorganic Nitrogen	Effluent Inorganic Nitrogen
	(uS/cm)	(uS/cm)	mg/l	mg/l	mg/l	mg/l	mg/L	mg/L	mg/l as N
3/1/2025	1390.00	818.00							
3/2/2025	1428.00	832.00							
3/3/2025	1246.00	797.00							
3/4/2025	1415.00	784.00	630	19.0	500.00	420.00	470.00	45.00	9.90
3/5/2025	1458.00	798.00							
3/6/2025	1178.00	776.00							
3/7/2025	1395.00	771.00							
3/8/2025	1385.00	829.00							
3/9/2025	1415.00	841.00							
3/10/2025	1557.00	834.00							
3/11/2025	1298.00	834.00							
3/12/2025	1426.00	812.00							
3/13/2025	738.00	763.00							
3/14/2025	1396.00	731.00							
3/15/2025	1278.00	774.00							
3/16/2025	1253.00	800.00							
3/17/2025	1369.00	798.00							
3/18/2025	1437.00	801.00							
3/19/2025	1372.00	813.00							
3/20/2025	1365.00	799.00							
3/21/2025	1544.00	789.00							
3/22/2025	1265.00	798.00							
3/23/2025	1159.00	786.00							
3/24/2025	1393.00	774.00							
3/25/2025	1454.00	798.00							
3/26/2025	1888.00	799.00							
3/27/2025	1705.00	840.00							7.60
3/28/2025	1407.00	851.00							
3/29/2025	1449.00	819.00							
3/30/2025	1501.00	804.00							
3/31/2025	1425.00	811.00							
Minimum	738.00	731.00	630	19.0	500.00	420.00	470.00	45.00	7.60
Maximum	1888.00	851.00	630	19.0	500.00	420.00	470.00	45.00	9.90
Average	1387.00	802.00	630	19.0	500.00	420.00	470.00	45.00	8.75

Table 3 Summary

*Cyanide was not available at the time of report completion

Table 3 Summary

March 2025

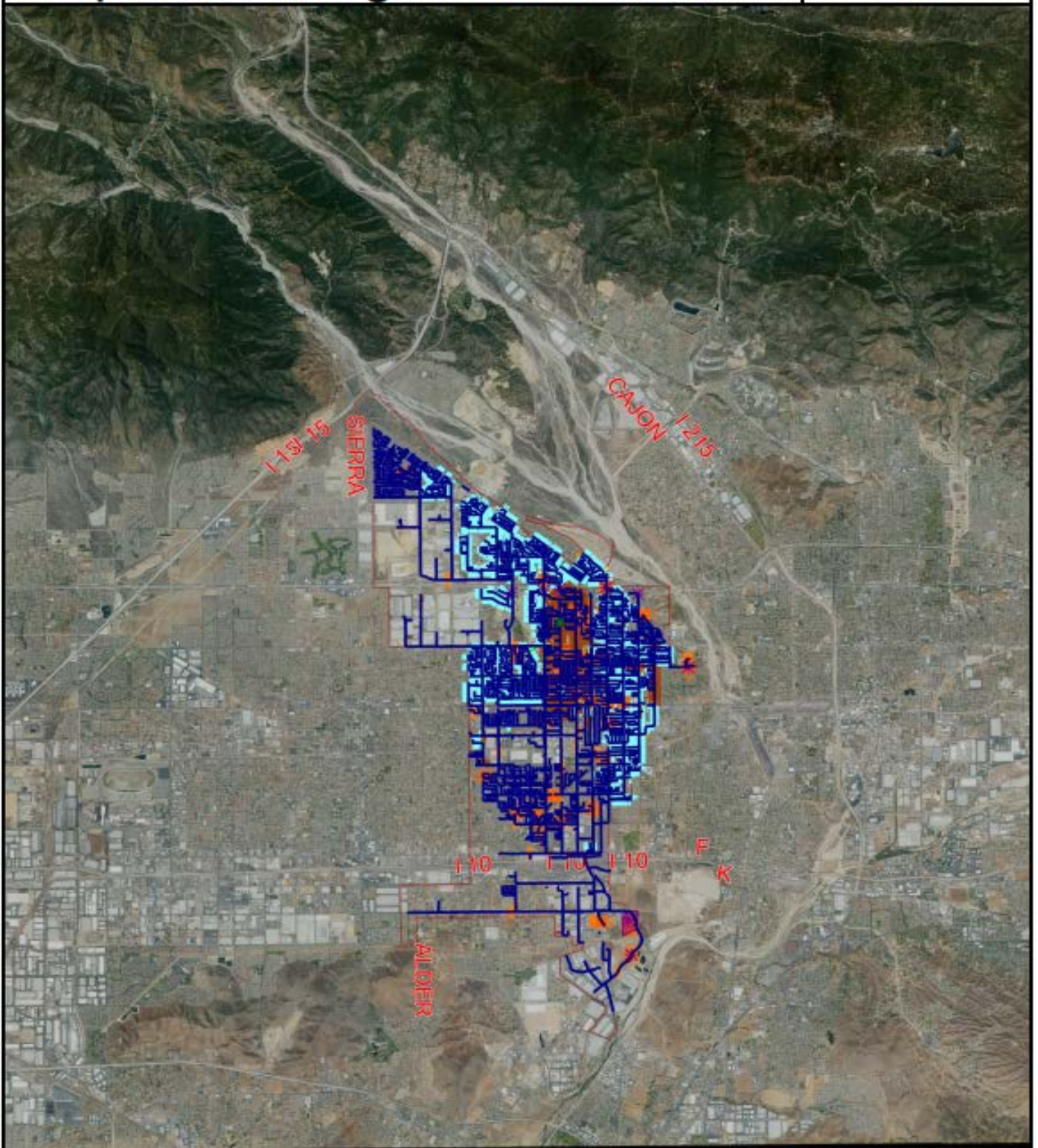
Date	Rialto WRF\Influent		Rialto WRF\Effluent		Rialto WRF\Eff		Rialto WRF\Effluent		Tranfer	Tranfer	Rialto	Tranfer Data
	Influent pH	24 hr avg. effl. pH	Effluent Temp	Effluent Ammonia	Effluent Total Coliform	Effluent Coliform 7 Day Median	Effluent Cyanide, Free Available	Eff Di(2-ethylhexyl) phthalate (DEHP)	FIT-8321 ADG #2 Flow	FIT-8321 ADG #2 Flow	Natural Gas Daily Use	FIT-8321 ADG #2 Flow
	SU	SU	Deg C	mg/L	MPN/100mL	MPN/100ML	ug/L	ug/l	cu ft/day	cu ft/day	cf/day	cu ft/day
3/1/2025	7.49	7.09	21.40		<1.8	<1.80			156676.00	156676.00	20700.00	156676.00
3/2/2025	7.67	7.07	21.30		<1.8	<1.80			156208.00	156208.00	21200.00	156208.00
3/3/2025	7.60	7.10	20.90	<0.10	<1.8	<1.80			146410.00	146410.00	20700.00	146410.00
3/4/2025	7.34	7.14	20.90		<1.8	<1.80		<5.00	148505.00	148505.00	21300.00	148505.00
3/5/2025	7.51	7.12	21.20		<1.8	<1.80			163266.00	163266.00	21000.00	163266.00
3/6/2025	7.62	7.11	20.80		<1.8	<1.80			160188.00	160188.00	21000.00	160188.00
3/7/2025	7.57	7.12	20.20		<1.8	<1.80			147760.00	147760.00	21000.00	147760.00
3/8/2025	7.76	7.15	20.30		<1.8	<1.80			137152.00	137152.00	300.00	137152.00
3/9/2025	7.77	7.16	20.50		<1.8	<1.80			140411.00	140411.00	500.00	140411.00
3/10/2025	7.65	7.19	21.00	<0.10	2.0	<1.80			149285.00	149285.00	20900.00	149285.00
3/11/2025	7.36	7.18	21.00		<1.8	<1.80			162521.00	162521.00	22400.00	162521.00
3/12/2025	6.76	7.17	21.00		2.0	<1.80			118007.00	118007.00	22100.00	118007.00
3/13/2025	6.73	7.14	20.80		2.0	<1.80			173293.00	173293.00	20300.00	173293.00
3/14/2025	6.90	7.13	19.70		<1.8	<1.80			149760.00	149760.00	21600.00	149760.00
3/15/2025	7.23	7.14	20.00		<1.8	<1.80			153118.00	153118.00	21500.00	153118.00
3/16/2025	7.70	7.11	20.50		<1.8	<1.80			162376.00	162376.00	21200.00	162376.00
3/17/2025	7.30	7.07	21.00	<0.10	<1.8	<1.80			151517.00	151517.00	21800.00	151517.00
3/18/2025	7.34	7.09	20.80		<1.8	<1.80			149288.00	149288.00	20800.00	149288.00
3/19/2025	7.23	7.03	20.80		<1.8	<1.80			153303.00	153303.00	23000.00	153303.00
3/20/2025	7.55	7.01	21.00		<1.8	<1.80			158965.00	158965.00	18900.00	158965.00
3/21/2025	7.62	7.00	21.10		<1.8	<1.80			160923.00	160923.00	21700.00	160923.00
3/22/2025	7.42	6.97	21.30		<1.8	<1.80			161542.00	161542.00	20200.00	161542.00
3/23/2025	7.34	6.98	21.30		7.8	<1.80			163010.00	163010.00	21800.00	163010.00
3/24/2025	7.37	6.97	21.70	<0.10	<1.8	<1.80			160555.00	160555.00	21600.00	160555.00
3/25/2025	7.26	6.95	22.10		<1.8	<1.80			153936.00	153936.00	22000.00	153936.00
3/26/2025	7.17	6.88	22.30		<1.8	<1.80			147136.00	147136.00	18300.00	147136.00
3/27/2025	7.19	6.94	22.00		<1.8	<1.80			142804.00	142804.00	19000.00	142804.00
3/28/2025	7.26	7.07	22.00		<1.8	<1.80			147352.00	147352.00	13300.00	147352.00
3/29/2025	7.48	7.12	21.90		<1.8	<1.80			126159.00	126159.00	20800.00	126159.00
3/30/2025	7.62	7.08	21.90		<1.8	<1.80			144895.00	144895.00	8800.00	144895.00
3/31/2025	7.27	7.11	22.00	<0.10	<1.8	<1.80			133702.00	133702.00	6200.00	133702.00
Minimum	6.73	6.88	19.70	<0.10	<1.8	<1.80		<5.00	118007.00	118007.00	300.00	118007.00
Maximum	7.77	7.19	22.30	<0.10	7.8	<1.80		<5.00	173293.00	173293.00	23000.00	173293.00
Average	7.39	7.08	21.10	<0.10	<2.0	<1.80		<5.00	150968.00	150968.00	18577.00	150968.00

Monthly Sewer Line Cleaned

Pipe Cleaning - March 2025

Map Centre Coords
x: 2056142, y: 599700
Date Printed: 4/23/2025
Scale 1:140000

1 mile



FIP-CIP Updates for April - 2025

1.. Rialto Solids Upgrade study: Basis of Design Report was finalized, reviewed and accepted by the City and Veolia. NTP on proceeding with 30% design provided to AECOM on 9/22/2023. AECOM is working on 30% design. Field visit completed on 11/15/2023 and 11/16/2023. 30% design will be completed by February 16, 2024. 30% design documents submitted by AECOM on February 16, 2024. This was shared with the City on 3/15/2024 after Veolia's internal reviews. 30% design review Page turn and in the field site visit with Stakeholders on 4/10/24 and in person (at WWTP) 4/19/24. Solids Handling 30% estimate developed and shared with RWS on 5/9/2024. June 2024: NTP provided to AECOM for the 60% design, GMP prep and Shop Drawings prep given at the end of May (ongoing). 60% design drawings are anticipated by 9/30/2024. Added design work change order in development for AECOM's added design efforts for the Centrifuge layout which was changed after the 30% and 60% design to reduce construction costs while optimizing project value and addressing other O&M concerns we raised during the reviews. 60% page turn completed with the City's consultant & City. Shared project cost pricing from AECOM-W.M. Lyles with the City. Awaiting direction on next steps. AECOM-W.M. Lyles continue working on the 100% design and the Guaranteed Maximum Price. A meeting with Stakeholders to vet the GMP - to be set up by Peter Luchetti in February. Veolia drafting a FCWA for review/approval. Veolia and Peter Luchetti are trying to set up a meeting to pick up the project before the GMP expires. 4/08/2025 - GMP review was held 4/07/2025. This project is scheduled for the Rialto Utility Authority meeting in May and then City Council on June 6/10/2025.

2. Digester 1 Activation: AECOM is reviewing the options proposed by DN Tanks and will include their recommendation and cost for the appropriate cover in the GMP for the Solids Handling design. This work will be completed after Solids Handling project design is complete. 4/08/2025 - Work will be completed after solids Handling Project Completion

3. Sycamore Sewer Trunk Line Project (Phase II): Design is complete and RFP documents sent to City (Tom) for review 8/15/23. The project needs to be completed during summer as it passes through a school zone and in order to get Sycamore Sewer Lift Station back online fully. 4/08/2025 - Funding has been identified. Veolia and the City of Rialto will coordinate next steps for the project.

4. Acacia Sewer Trunk Line Project (Phase III): Design is underway and RFP documents are being updated. Funding needs to be identified. Design will be completed after funding is identified. 4/08/2025 - Funding has been identified. Veolia and the City of Rialto will coordinate next steps for the project.

5. Etiwanda Ave Water Improvement Project: Water line improvements from Riverside Ave to Eucalyptus Ave. The project is in design and will have a design review once ready. 4/08/2025 - Funding has been identified. Veolia and the City of Rialto will coordinate next steps for the project.

6. Safe Routes to Schools: SRTS is a project that includes the relocation of 6 fire hydrants at specified areas. 100% plans were submitted to Veolia on 10/07/2024. Plans have been reviewed and the contractor bid process is ongoing. The Merrill SRTS project is 95% complete with only concrete pads for hydrants remaining. This work is expected to take place in conjunction with the city's concrete contractor. The city contractor has poured sidewalks and plans, depending on weather conditions to pour hydrant pads the week of 3/17/2025. This will finish the conditions of the FCWA. The first progress invoice has been submitted to the City for payment. 4/08/25 - Weather caused more delays and the contractor is doing contract work that is time permitting to not interrupt residents' access to property and street. A schedule request has been sent to CJINC. (City Contractor) to coordinate and complete the necessary work. Per CJINC. Pads for the hydrants may be poured on the week of (4/7-4/11/2025) A final invoice to follow once the pads are poured, inspected, and punchlist is completed. The pads for the hydrants have been completed and the final invoice was submitted for processing on 5/10/2025. The project is complete and will be removed from this memo in the next iteration.

7. City Well 3A (Phase 1): The first phase would include a pre/post video log of the well, bail and brush, a 60 hour development test that includes a 12hr step test at a 10 day constant pump rate, and a Dept. of Drinking Water required Title 22 sampling panel with the addition of PFOA/PFAS panel. This project is in the early stage and a FCWA is to be submitted to the city mid March. The Veolia team are finalizing the risk assessment and FCWA before submitting to the City. 4/08/2025 - The FCWA for phase 1 was submitted to the City on 3/25/2025 for approval. The City agreed to move forward with presenting this project to the City Council and on April 22nd, 2025. This project will be presented to the council for approval on May 27th as it did not make the April calendar.



City of Rialto

Legislation Text

File #: UC-25-0347, **Version:** 2, **Agenda #:**

For Utilities Commission Meeting May 20, 2025

TO: Honorable Chairperson and Commission

APPROVAL: John Rossi, Interim Utilities Director

FROM: Nicole Hemmans, Senior Administrative Analyst

To-Do List.

Future Agenda items: NONE



City of Rialto

Legislation Text

File #: UC-25-0346, **Version:** 1, **Agenda #:**

For Utilities Commission Meeting May 20, 2025

TO: Honorable Chairperson and Commission

APPROVAL: John Rossi, Interim Utilities Director

FROM: Nicole Hemmans, Senior Administrative Analyst

Previous Discussion Update

No previous discussion items.



City of Rialto

Legislation Text

File #: UC-25-0349, **Version:** 1, **Agenda #:**

For Utilities Commission Meeting May 20, 2025

TO: Honorable Chairperson and Commission

APPROVAL: John Rossi, Interim Utilities Director

FROM: Nicole Hemmans, Senior Administrative Analyst

Utilities Director Update

Updates:

- 1) The City renewed the Marketing Agreement with Service Line Warranty of America (SLWA), with a contract extension through June 30, 2027.