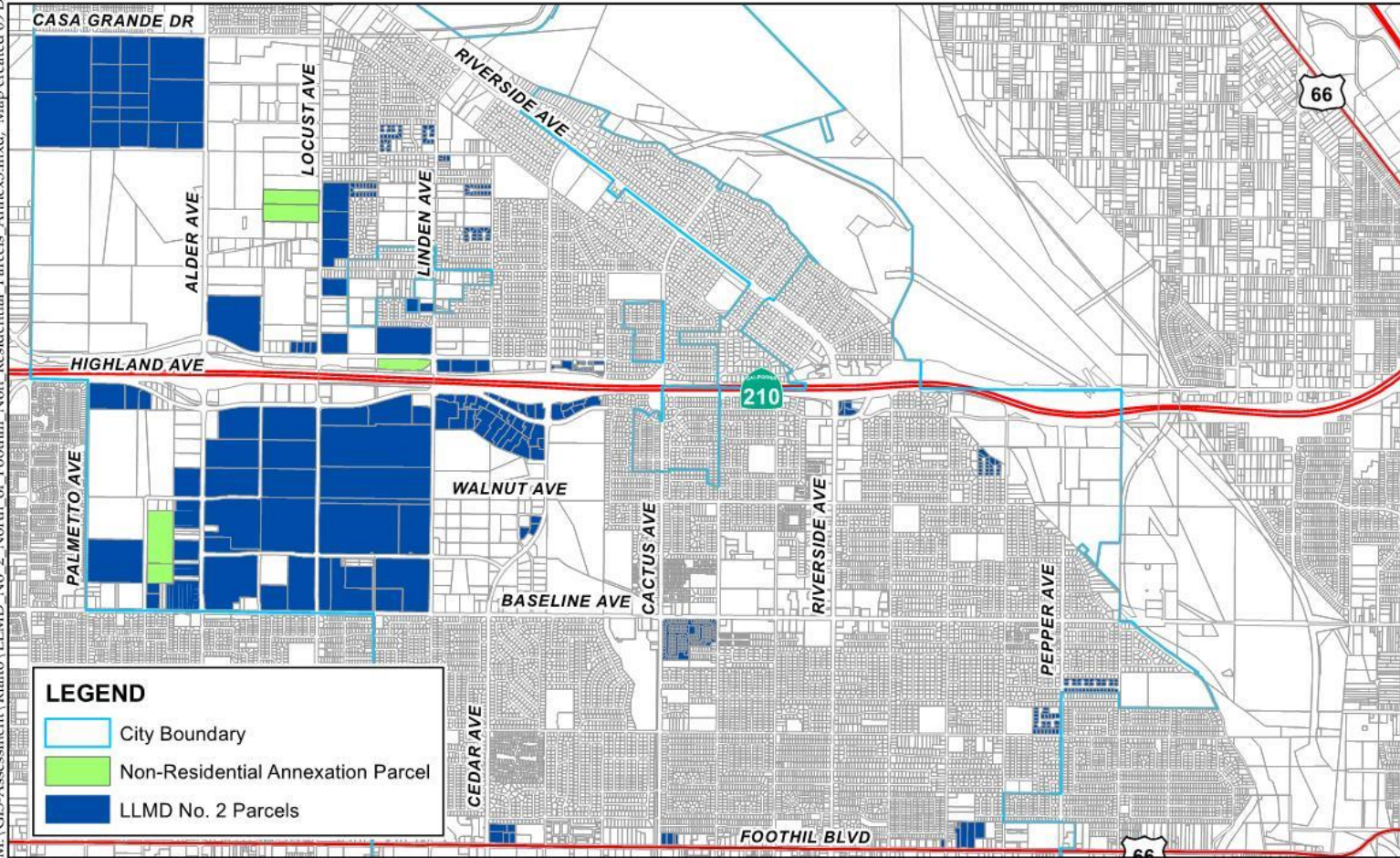


Landscape and Lighting Maintenance District No. 2

M:\GIS-Assessment\Rialto\LLMD No 2 North of Foothill Non Residential Parcels Annex3.mxd; Map created 09 Dec 2020



Source: San Bernardino Co. GIS, 2020



0 2,000 4,000 6,000 8,000 Feet

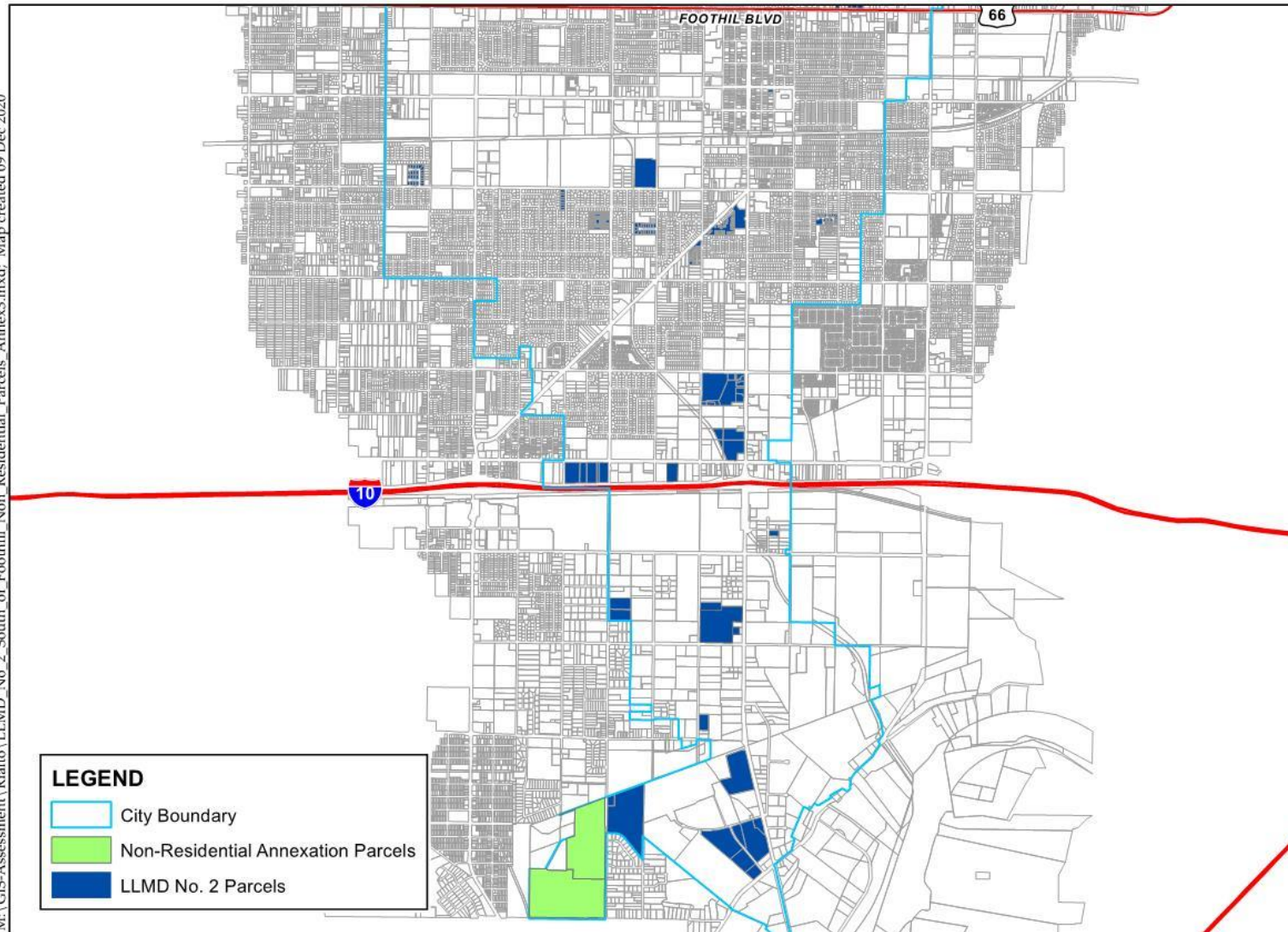
Landscaping and Lighting Maintenance District 2 North of Foothill Blvd.

City of Rialto



Non-Residential North of Foothill Blvd.

M:\GIS-Assessment\Rialto\LLMD_No 2_South_of_Foothill_Non_Residential_Parcels_Annex3.mxd; Map created 09 Dec 2020



Source: San Bernardino Co. GIS, 2020

Landscaping and Lighting Maintenance District 2 South of Foothill Blvd.

0 2,000 4,000 6,000 8,000 Feet



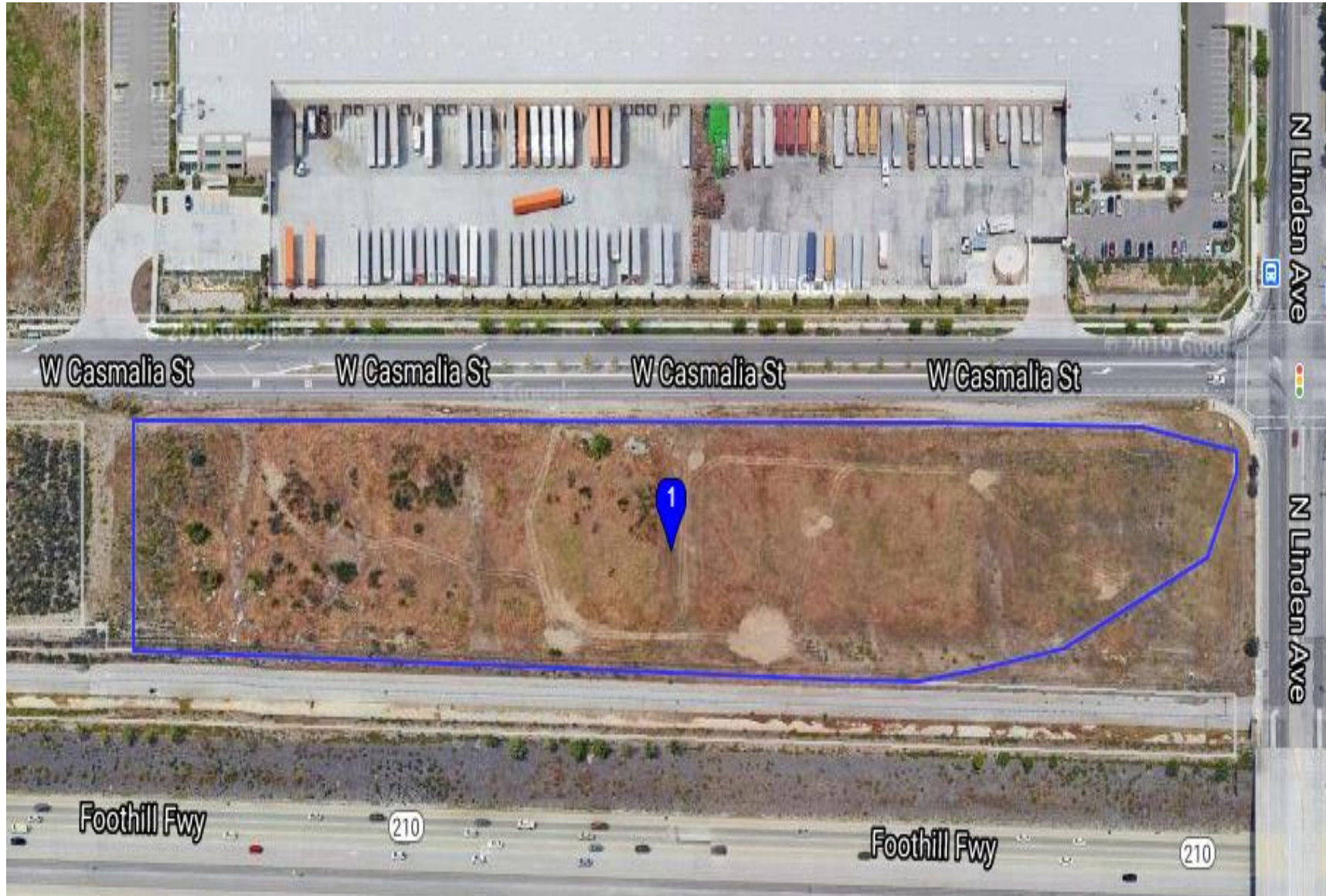
Non-Residential South of Foothill Blvd.

PPD #	CROSS STREETS
PPD 2017-0082	Northwest corner of Cactus Avenue and El Rivino Road
PPD 2019-0057	Southwest corner of Casmalia Street and Linden Avenue
PPD 2019-0066	Along Cactus Avenue, north of El Rivino Road
PPD 2434	Along east side of Tamarind Avenue, south of Walnut Avenue
PPD 2435	Along west side of Locust Avenue, south of Persimmon Street

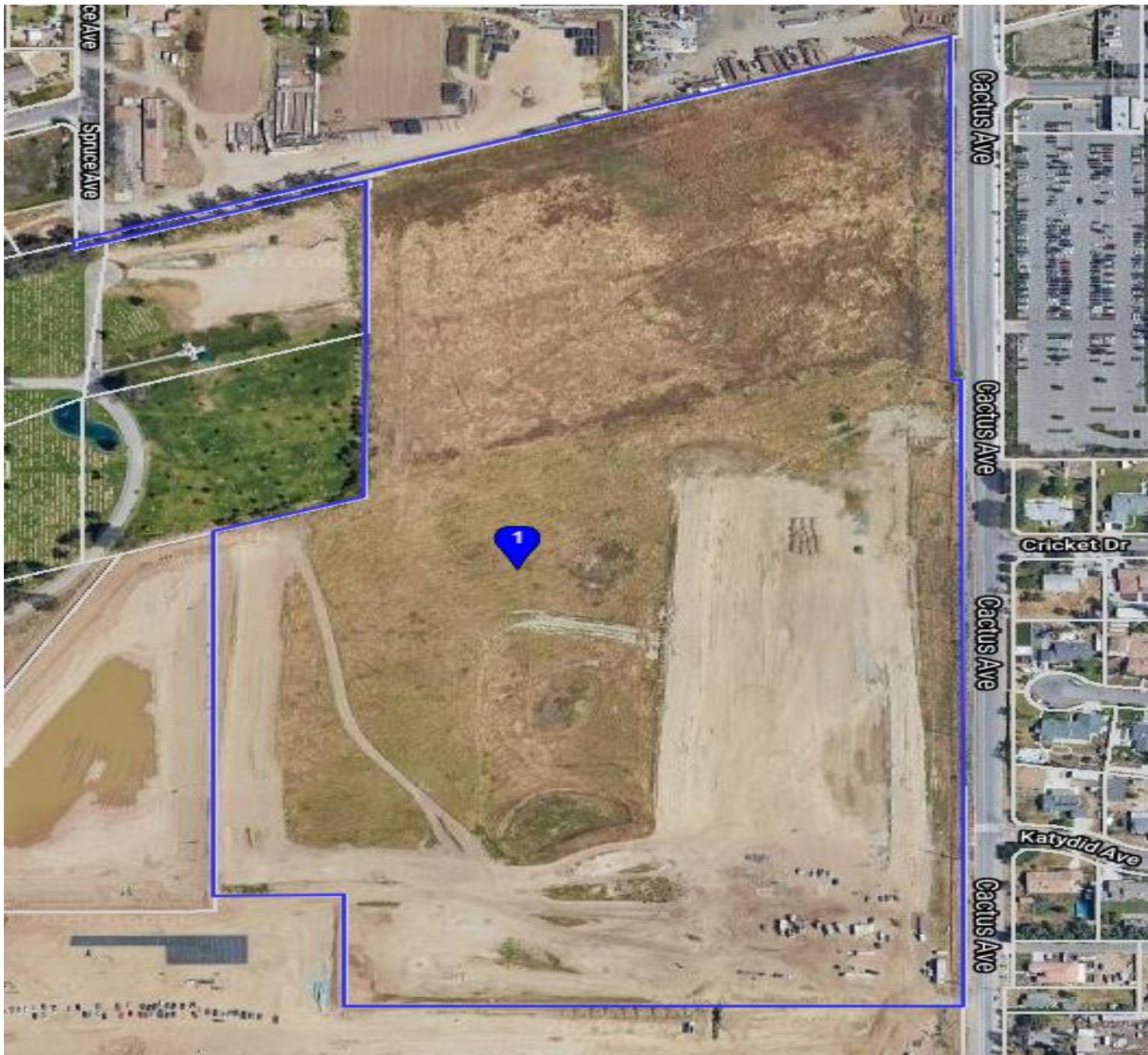
Non-Residential
PPD's



PPD
2017-0082



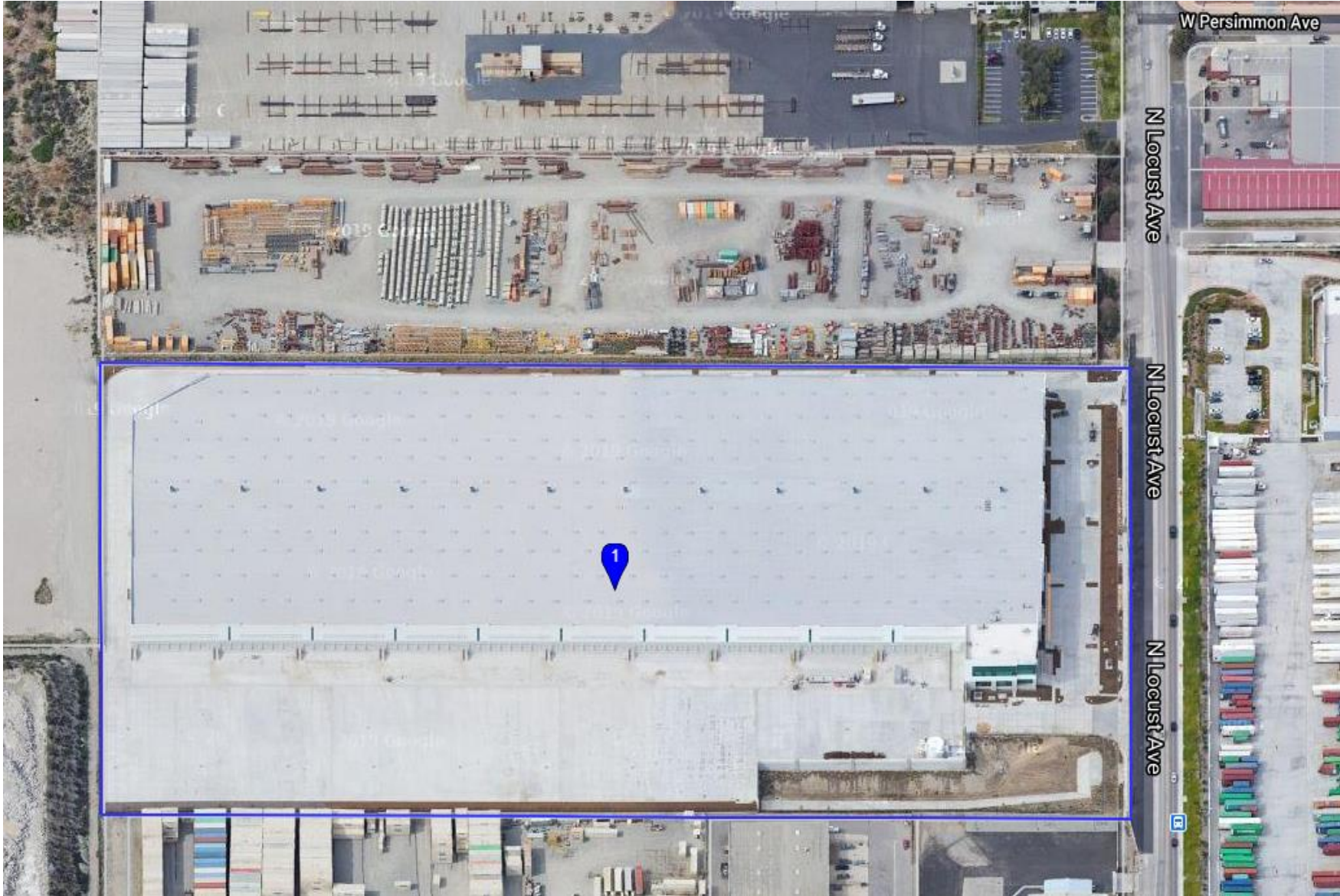
PPD
2019-0057



PPD
2019-0066



PPD
2434



PPD
2435