

Cable Advisory & Utility Commission Report

January 2026

Reporting period November 2025



**RIALTO
CUSTOMER SERVICE MONTHLY
OPERATIONS REPORT**

Reporting Period:
November 2025

Prepared for: Rialto Water Services

Prepared by: Veolia Water West Operating Services



Table of Contents

I. CUSTOMER SERVICE SUMMARY.....	3
II. CALL CENTER PERFORMANCE.....	3
III. AUTOMATED SERVICES.....	3
IV. CONSUMPTION & BILLING.....	4
A. Consumption.....	4
B. Billing.....	4
V. REVENUE & AGING.....	5
A. Revenue	5
B. Aging	6
C. Bad Debt.....	6
VI. SERVICE ORDERS	7
VII. OTHER ACTIVITIES	7
VIII. REVENUE REPORT	7
A. Revenue Summary.....	7
B. Non Rate Revenue - Extraterritorial Customers.....	7
C. Non-Rate Revenue – Other	8
D. Development Impact Fees.....	8
E. Rialto Basin Water Rights and Leasing	8
F. Payment Collection Method – Fiscal Year to Date	10
G. Cash Collections on Behalf of the City of Rialto-Prior Year Comparison.....	10
H. Non-Rate Revenue + Utility Revenue Collections Prior Year Comparison	10
I. Non-Rate Revenue + Utility Revenue Collected Fiscal Year-to-Date.....	11
J. Increase in Cash Collections and Fund Distribution—Prior Year Comparison	11
K. Non-Rate and Extraterritorial Customer Accounts Receivable Aging	12

I. CUSTOMER SERVICE SUMMARY

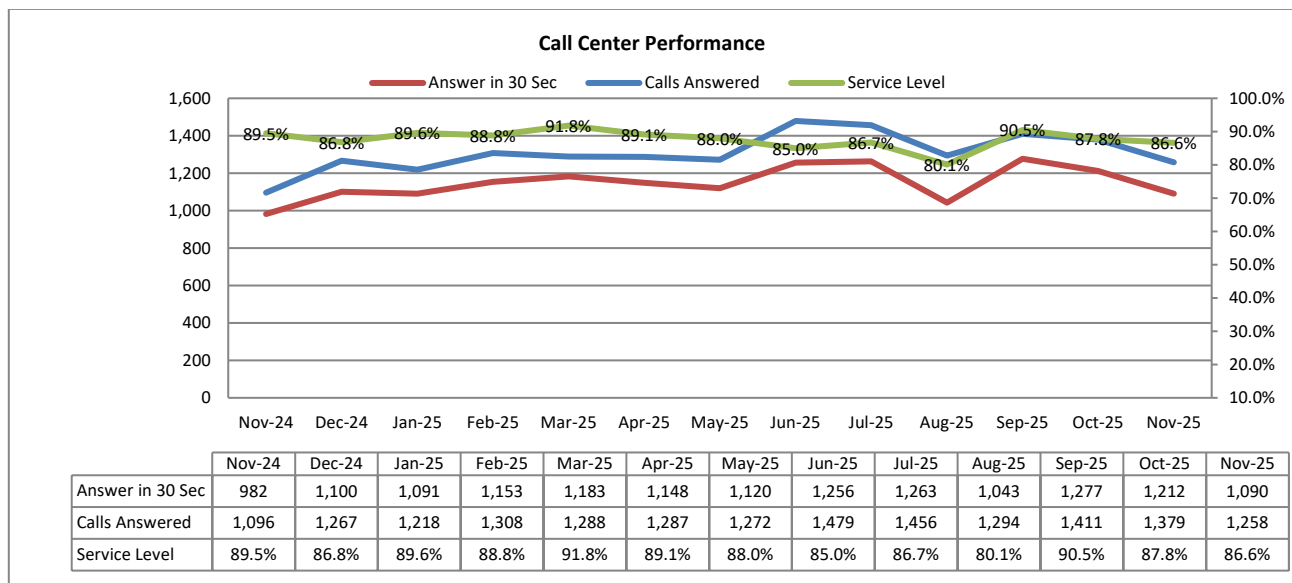
During this reporting month, the Customer Service team provided call service level of 86.6%. Out of 1,258 inbound calls answered 1,090 answered within the first 30 seconds.

Water consumption has increased by 6.5% when compared against previous month. When compared against last year, consumption has decreased by 8.4%.

Sewer revenue has increased by 2.1% compared to the prior month and increased by 4.9% from last year.

II. CALL CENTER PERFORMANCE

During this reporting month, service level was 86.6% with 1,090 out of 1,258 being answered within the first 30 seconds. Overall average wait time was fifty-three (53) seconds.



III. AUTOMATED SERVICES

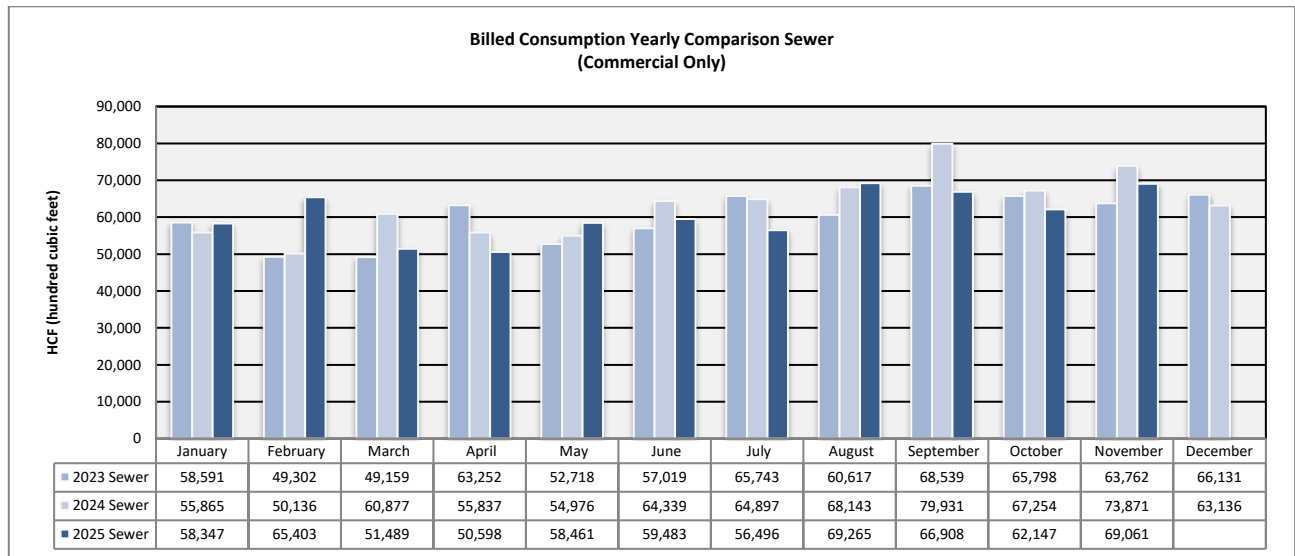
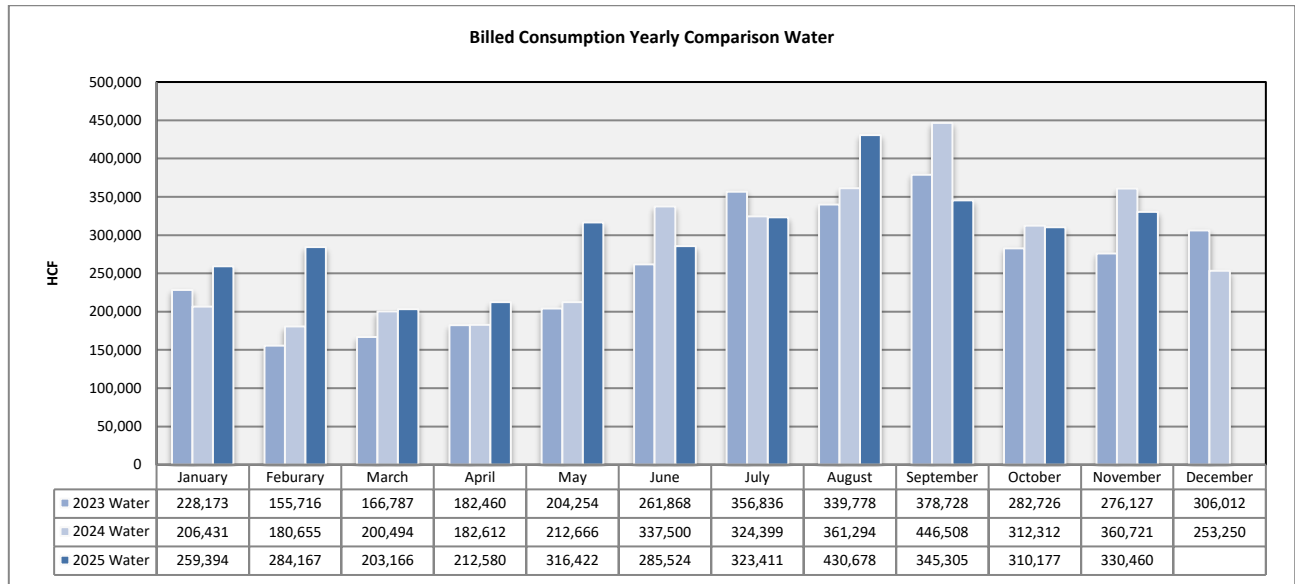
About 13,045 or 56.8% of the rate payers have created log-ins to access their accounts online. Of these customers, with online access, 48.5% have chosen the e-bill option. This e-bill participation is 6.9% increase from November of the prior year.

	Nov-24	Dec-24	Jan-25	Feb-25	Mar-25	Apr-25	May-25	Jun-25	Jul-25	Aug-25	Sep-25	Oct-25	Nov-25
Number of Bills	22,571	22,575	22,587	22,604	22,657	22,694	22,705	22,770	22,792	22,838	22,864	22,875	22,927
Number of Bill Adjustments (during billing)	9	29	17	10	29	25	15	18	29	10	7	8	11
Automated Over the Phone Payments	2,092	2,436	2,509	2,040	2,509	2,454	2,276	2,578	2,596	2,344	2,531	2,560	2,089
Online Payment	7,804	10,320	9,747	7,676	9,912	9,798	8,434	9,800	10,260	8,691	11,224	10,369	7,614
E-bill Participants	5,922	5,959	5,997	6,031	6,069	5,969	6,000	6,074	6,134	6,185	6,233	6,290	6,332
Auto Pay Participants (New Portal)	4,343	4,367	4,420	4,467	4,536	4,554	4,630	4,696	4,728	4,776	4,834	4,881	4,923
PayNearMe	93	95	108	73	99	97	88	88	88	88	103	85	80

IV. CONSUMPTION & BILLING

A. Consumption

Water consumption has increased by 6.5% when compared against previous month. When compared against last year, consumption has decreased 8.4%.



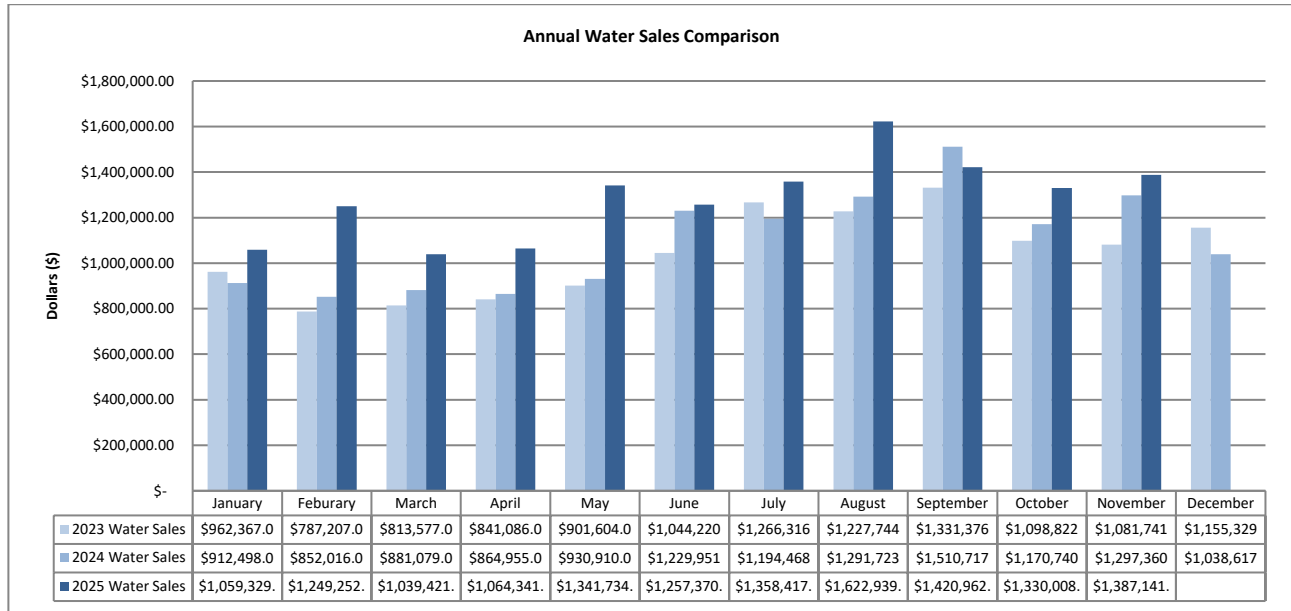
B. Billing

A total of 22,927 bills were mailed or sent out electronically in November. Billing accuracy was 99.9% with eleven (11) requiring adjustments after bill generation.

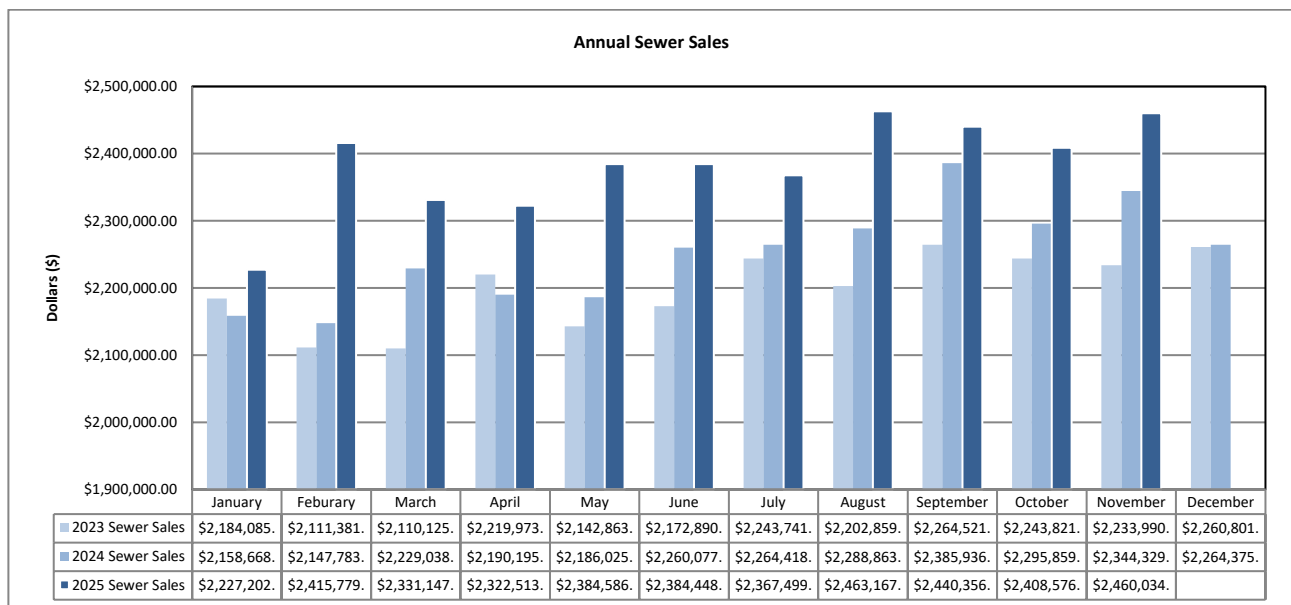
V. REVENUE & AGING

A. Revenue

Water revenue has increased 4.3% when compared against the prior month and increased 6.9% when compared against previous year. Sewer revenue has increased 2.1% compared to the prior month and increased by 4.9% from last year. The rise in revenue is mostly attributed to recent rate increase in January 2025.

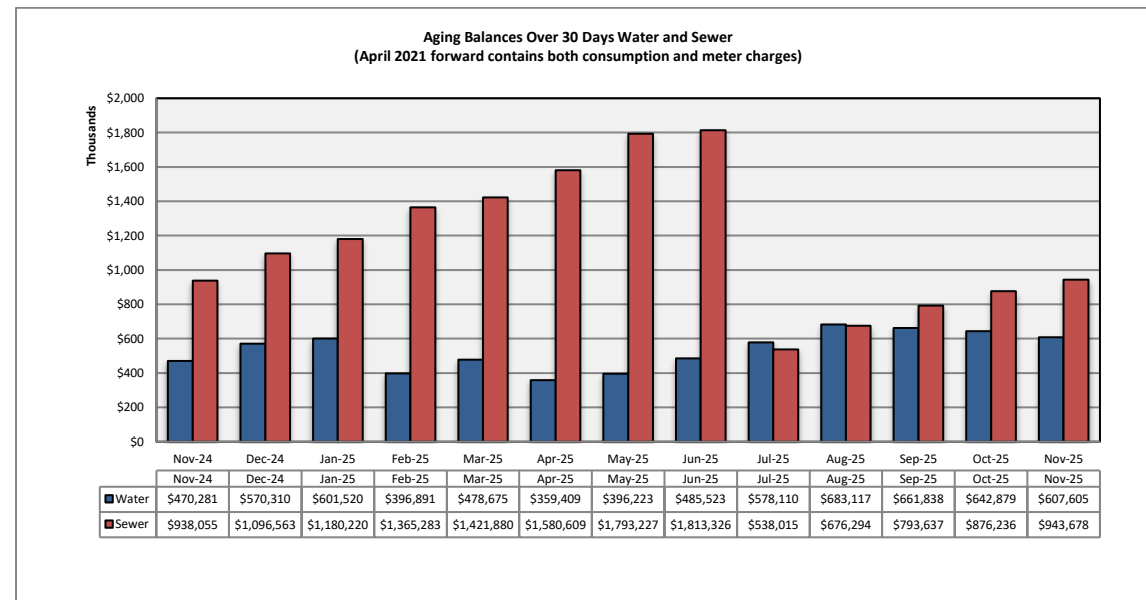
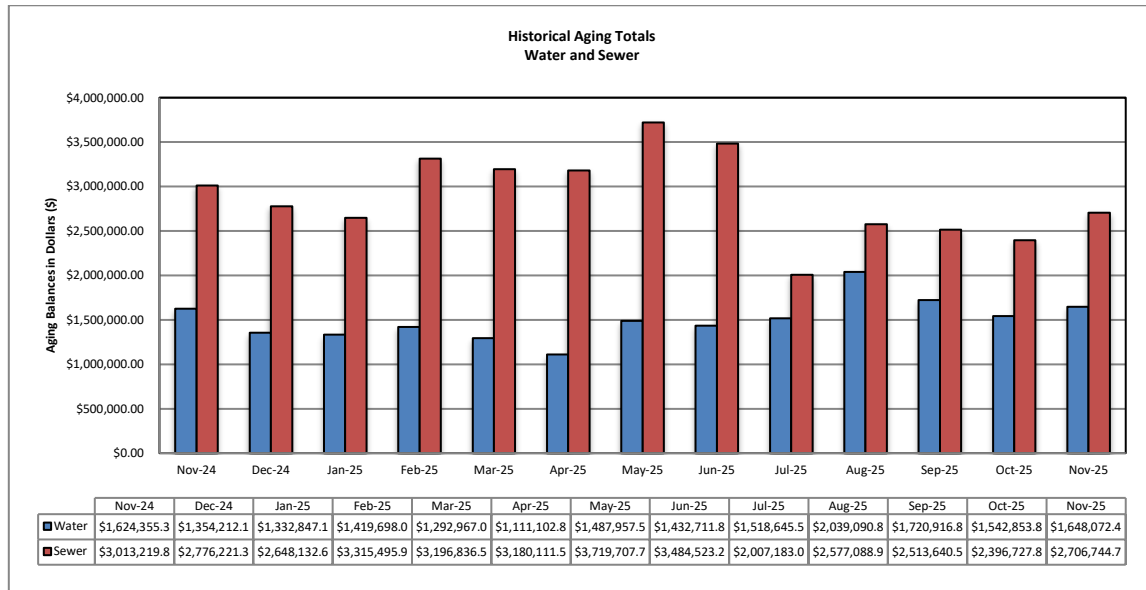


(Please consider the scale of the graph as doubled height does not mean double the amount)



B. Aging

The total aging balance has increased by 10.5%, *see first table below*. For balances >30-days only, water has decreased 5.5% and wastewater has increased by 7.4%. Sewer gaining balances are expected to continue rising until tax roll in year 2026.



C. Bad Debt

Twenty-nine (29) accounts were sent to collections for a total amount of \$7,014.85. These bad debts arise from customers moving out or selling the property and not closing the account with final payments.

VI. SERVICE ORDERS

270 service orders were initiated by the customer service team during the reporting month. Of this total, 85 service orders or 31% were due to occupant changes.

144 service orders were initiated to accommodate water disconnection for non-payment and reconnection of water services when customer set up (or reinstate) a payment arrangement with down payment.

VII. OTHER ACTIVITIES

CS department has full staff, as remaining team member has returned from her disability.

CS team is continuing to work with the City, developer (Lennar) and purchasing to plan ahead and minimize the delays of future water meter needs. Final Standard Operating Procedure (SOP) related to new development project is expected to be published by the City in December.

VIII. REVENUE REPORT

A. Revenue Summary

Cash Revenue is compiled and reconciled to the merchant account on a daily basis. Cash receipts and deposits are made daily and internal controls are reviewed regularly to ensure safeguarding of assets and proper recording of all transactions. Total revenue collected in November 2025 is \$2,832,000 whereas Non-Rate Revenue is \$70,000; Utility Revenue is \$2,710,000 and Tax / Ambulance Revenue at \$52,000.

RWS collects Utility User Taxes and Ambulance Fees on behalf of the City of Rialto. The Utility User Tax (UUT) rates are based on the total billed amount, therefore the collection fluctuates as billed amounts change. The total UUT charges collected in November 2025 and November 2024 are \$48,000 and \$187,000 respectively. The large variance in collection of UUT charges is due to the City exempting UUT charges to the Residential customers beginning January 2025 through December 2025. Ambulance Revenue is also collected on behalf of the City of Rialto totaling \$4,000 in November 2025 and \$4,000 in November 2024.

B. Non Rate Revenue - Extraterritorial Customers

RWS bills the City of Fontana \$133,000 each month for extraterritorial sewer usage.

Colton Unified School District is in agreement with RWS to pay \$5,000 monthly for sewage connections based on enrollment rates provided each school year.

An extraterritorial agreement to provide sewer service was executed between the City of Rialto and the County of San Bernardino—County Service Area 70, Zone BL (Bloomington). This housing development project generates extraterritorial sewer service revenue of \$20,000 per month.

The City has an agreement with Social Science Services dba Cedar House Life Change Center to provide extraterritorial sewer service providing sewer revenue of about \$5,000 each month.

C. Non-Rate Revenue – Other

Other revenue is generated by leasing space for cell towers to AT&T, which has two leases at \$2,073 and \$1,500. Sprint lease is at a currently contracted rate of \$2,000 each month. Vertical Bridge also provides \$2,400 a month of cell tower generated Revenue.

Rialto Bioenergy Solutions subleased a City property for \$10,750 a month.

The City and San Bernardino Valley Municipal Water District have entered into a Brine Line Capacity Agreement on November 23, 2021. This agreement pertains to the use of its interest in the SARI Line and discharge of certain brine waste to the SARI Line exclusively from the operation of Rialto Bioenergy Facilities within the City’s boundaries. The revenue generated in this agreement consists of quarterly rent of \$37,500 along with the Fixed Pipeline Capacity Fee of \$3,300 per month and Fixed Treatment Plant Capacity Fee of \$3,300 per month. In addition, a variable fee of any discharge costs are also billed.

The San Bernardino Valley Water District (SBVWD) reimburses RWS for water conservation programs provided to customers. A quarterly bill is delivered directly by the City.

D. Development Impact Fees

Development Impact Fees (“DIF”) are paid to the City of Rialto as various developments are completed in the City. As such, the City of Rialto receives monies from the various developments, which is then distributed to RWS. There was no DIF payment received in November of 2025.

E. Rialto Basin Water Rights and Leasing

A Standby Water Lease Agreement between Fontana Union Water Company and City of Rialto is in effect. For the 2024-2025 Water Year, RWS billed San Bernardino County the amount of \$349,264 for the Standby Charges and Production Charge.

In addition, the County is also billed annually for Rialto Well #3’s summertime electricity costs based on peak usage.

Cash Collections by Payment Method – Rialto Water Services

Payment Method	Description	Transaction Count	NOVEMBER 2025	%
Carrier Deposits	Cash deposits prepared per day for transport to US Bank.	17	\$ 103,022	3.50%
Remote Deposits	Scanned batches of checks payments made at the customer service counter	17	311,584	10.59%
EBOX	Batches of electronic customer payments posted to customer accounts at US Bank.	17	237,351	8.07%
PAYMENTUS - IVR / Paymentus / Walk-in Credit Card payment	Customer payments by credit cards and ACH / eCheck payments through an Interactive Voice Response system using a touchtone phone. Payments originated from Merchant online service	10,420	1,572,041	53.45%
Lockbox Deposits	Batches of customer payments mailed in to US Bank's lockbox	17	707,921	24.07%
Pay Near Me	Cash payment service that allows customers to pay at a local 7-Eleven, CVS, Walmart or Family Dollar stores.	74	9,254	0.31%
Total Revenue per Bank			\$ 2,941,173	100.00%
Recon to RUA Recap:				
Adj detailed in RUA			(108,965)	
Prior mo. Correction				
RUA increase in Cash			\$ 2,832,208	

Transaction Counts for Carrier Deposits, Remote Deposits, UB Bill Conc Service (EBOX), and Lockbox Deposits reflect number of batches deposited to the bank. Transaction counts for credit card POS, IVR, and Pay-Near-Me transactions are per number of customer payments. IVR payments are received and process by Paymentus on the day the transactions are made. General ledger are posted and accounted for the following day the payments are processed.

F. Payment Collection Method – Fiscal Year to Date

	Jul 2025	Aug 2025	SEPT 2025	OCT 2025	NOV 2025	Total	%
Carrier Deposits	\$ 144,793	\$ 140,286	\$ 155,654	\$ 147,234	\$ 103,022	\$ 690,988	3.40%
Remote Deposits	499,489	241,420	686,008	995,009	311,584	\$ 2,733,509	13.46%
EBOX	407,888	286,741	367,169	378,253	237,351	\$ 1,677,403	8.26%
Paymentus, IVR, Credit Cards	2,118,383	1,853,657	2,370,061	2,278,360	1,572,041	\$10,192,502	50.19%
Lockbox Deposits	1,176,928	904,658	1,003,875	1,162,475	707,921	\$ 4,955,857	24.40%
Pay Near Me	11,821	11,616	14,142	11,316	9,254	\$ 58,150	0.29%
Total Revenue to Bank	\$4,359,302	\$3,438,377	\$ 4,596,910	\$ 4,972,646	\$ 2,941,173	\$20,308,409	100.00%
NSF	(10,757)	(15,745)	(17,442)	(15,892)	(14,628)	\$ (74,464)	
Net deposits	\$4,348,546	\$3,422,632	\$ 4,579,468	\$ 4,956,754	\$ 2,926,545	\$20,233,945	

G. Cash Collections on Behalf of the City of Rialto-Prior Year Comparison

	NOV 2025	NOV 2024	Variance
UUT Water	\$ 17,767	\$ 62,229	\$ (44,461)
UUT Sewer	30,379	125,234	(94,855)
Ambulance	4,059	4,112	(53)
Total	\$ 52,206	\$ 191,575	\$ (139,370)

H. Non-Rate Revenue + Utility Revenue Collections Prior Year Comparison

	NOV 2025	NOV 2024	Variance
Non-Rate / Extra Territorial Revenue	\$ 70,447	\$ 527,477	\$ (457,030)
Utility Revenue	\$2,709,556	\$2,515,301	194,255
Total	\$2,780,002	\$3,042,778	\$ (262,775)

I. Non-Rate Revenue + Utility Revenue Collected Fiscal Year-to-Date

	Jul 2025	Aug 2025	Sept 2025	Oct 2025	Nov 2025	Total
Non-Rate Revenue						
Cell Tower Rent,Llease	21,485	17,154	15,080	53,897	13,580	121,197
Interest Income	-	-	-	-	-	-
NRR-FOG	-	-	-	-	-	-
Municipal Water Sales	-	-	-	-	-	-
Extra Terr- Sewage	169,483	6,711	107,820	583,011	35,551	902,576
Abatement of Expenses	-	-	-	-	-	-
Water Meter Lost/Damaged/Repl	22,650	17,176	13,295	16,075	14,366	83,563
Misc Fees - New Occ., Same Day Svc	10,815	7,182	7,522	9,355	6,949	41,823
Miscellaneous Revenue - Sewer	-	-	-	-	-	-
NSF	-	-	-	-	-	-
Total Non-Rate Revenue	\$ 224,433	\$ 48,223	\$ 143,717	\$ 662,339	\$ 70,447	1,149,158
Utility Revenue						
Water Penalty	30,460	33,752	31,754	37,988	34,640	168,594
Sewer Penalty	74,191	48,802	42,100	54,993	40,418	260,505
Turf Removal, Hi-Eff Rebate	(100)	-	-	-	-	(100)
Water Deposits Billed	16,142	15,863	16,027	17,938	13,085	79,055
Hydrant Deposits	315	158	161	68	-	702
Sewer Deposits Paid	-	-	-	-	-	-
Sewer Deposits Billed	16,204	16,667	15,480	15,055	12,065	75,470
Water	1,329,427	1,148,584	1,723,704	1,493,556	835,225	6,530,496
Sewer	2,760,649	1,949,745	2,492,623	2,526,711	1,594,009	11,323,737
Unapplied Credits	26,588	50,012	109,984	80,529	180,113	447,226
Bad Debt Sewer	-	-	-	-	-	-
Bad Debt Water	-	-	-	-	-	-
Tax Roll Sewer	-	-	-	-	-	-
Collection Agency - Water	-	-	-	-	-	-
Collection Agency - Sewer	-	-	-	-	-	-
Collection Agency - Misc Water	-	-	-	-	-	-
Total Utility Revenue	\$4,253,876	\$3,263,582	\$4,431,832	\$ 4,226,839	\$ 2,709,556	\$18,885,685
Total Non-Rate + Utility Rev.	4,478,309	3,311,805	4,575,549	4,889,178	2,780,002	20,034,843

J. Increase in Cash Collections and Fund Distribution—Prior Year Comparison

	Increase to Cash per Incode	Adjustments Required to GL Cash	Fund 660-Sewer	Fund 670-Water	Total Cash Per GL	Adjustments To Match RUA to Bank	Cash/CC/Cks Deposit To Bank
Nov 2025	2,832,208	13,916	1,651,944	1,166,349	2,832,208	108,965	2,941,173
Nov 2024	3,234,353	22,440	1,899,653	1,312,260	3,234,353	170,671	3,405,024

K. Non-Rate and Extraterritorial Customer Accounts Receivable Aging

Name	Total as of 11/30/2025	Current	31 to 60 days	61 to 90 days	>90 days
AT&T - Easton	\$ -	-	-	-	-
Cedar House	10,945	10,945	-	-	-
CITY OF FONTANA	131,182	131,182	-	-	-
Colton Unified School District	5,571	-	-	5,571	-
County of San Bernardino-CSA 70 BL	-	-	-	-	-
Rialto BioEnergy Facilities	-	-	-	-	-
Sprint-Nextel	5,530	-	-	-	5,530
San Bernardino Co Waste System Div	349,264	-	349,264	-	-
SB Valley Mun Water District	-	-	-	-	-
Vertical Bridge Holdco, LLC (CIG)	7,544	2,830	-	-	4,714
Grand Total	\$ 510,035	\$ 144,957	\$ 349,264	\$ 5,571	\$ 10,243

AT&T makes annual payment of one cell tower rent and monthly dues on the other. The negative balance reflects an early payment.

Social Science Service (Cedar House) balance reflects current service fees.

City of Fontana is current with its obligations.

Colton Unified School District has been contacted for the outstanding balance.

County of San Bernardino is current with its obligations.

Rialto Bioenergy Solutions is current with its obligations.

Vertical Bridge Holdco, LLC and Sprint: Vertical Bridge and Sprint have been contacted for open Invoices as well.

San Bernardino County Waste System Division's balance is the annual billing of the Standby Water Rights Agreements.

RIALTO WATER

MONTHLY OPERATIONS REPORT

Reporting Period:

November 2025

Prepared for: Rialto Water Services

Prepared by: Veolia Water West Operating Services

RIALTO WATER

OPERATIONS AND MAINTENANCE REPORT

Contents

I.	EXECUTIVE SUMMARY	3
A.	Water Production Totals	4
B.	Static Water Levels	6
II.	REGULATORY	7
A.	Regulatory Submittals	7
B.	Sample Site Location Results	8
C.	Violations	10
D.	Source Water Total Dissolved Solids (TDS)	10
III.	HEALTH AND SAFETY	10
A.	Monthly Safety Program Overview	10
IV.	CHEMICAL USE	10
V.	ELECTRICAL USE	11
VI.	WATER QUALITY COMPLAINTS	11
VII.	OPERATIONS UPDATE	11
A.	Operational Wells	12
B.	Valve Activity	12
C.	Hydrant Flushing	12
D.	Sanitary Survey	13
VIII.	ASSET MANAGEMENT	13
A.	Main Breaks, Service Leaks, Adverse Water Quality and Health/Safety Issues	13
B.	Major Equipment and/or Machinery Outages	14
IX.	RAINFALL TOTALS	14

RIALTO WATER

MONTHLY OPERATIONS REPORT

I. EXECUTIVE SUMMARY

Highlights of this month's Water O&M report include the following:

- The water distribution network achieved compliance with all permit requirements.
- No sample anomalies that require secondary sampling.
- No significant issues with water availability. The purchasing of water remained consistent and daily equalization tanks levels remained at anticipated volume for customer availability.
- The Preventative Maintenance Program, as well as Valve Exercising, continues to identify areas of focus for our Routine Repair and Replacement.

A. Water Production Totals

Total water delivered into the Rialto system this month was 731.30 acre-feet. 699.56 acre-feet was delivered into the system from the groundwater wells (City 4A production is included in the well total). 9.44 acre-feet was delivered via the BLF transmission system (City 4A production has been deducted). 22.30 acre-feet came from the OPRTP.

NOVEMBER 2025 DAILY PRODUCTION TOTALS IN ACRE FEET											
							Delivered Via BLF				
								Purchased			
DATE	Chino 2	City 2	Rialto 3	Rialto 5	Miro 3	EW-1	City 4A	6-9	Cactus ¹	OPRTP ²	TOTAL ³
11/1/25	6.29	10.27	6.91	0.00	0.06	0.00	9.7	0	5.28	0	28.81
11/2/25	5.16	9.98	5.11	0.00	6.02	0.00	9.47	4.2	4.49	0	34.96
11/3/25	3.97	0	4.31	0.00	6.09	0.00	7.12	5.07	5.64	0	25.08
11/4/25	5.73	4.48	5.02	0.00	5.7	0.00	8.08	3.58	2.77	0	27.28
11/5/25	5.00	8.42	4.68	0.00	5.82	0.00	8.63	1.79	4.17	0	29.88
11/6/25	5.00	0.34	4.63	0.00	5.78	0.00	8.74	3.39	4.38	0	23.52
11/7/25	5.37	7.27	4.59	0.00	5.72	0.00	9.83	6.12	3.74	0	32.81
11/8/25	6.01	1.7	4.95	0.00	6.07	0.00	8.8	2.82	4.63	0	26.18
11/9/25	4.84	0.11	4.82	0.00	6.09	0.00	9.58	8.31	4.45	0	28.62
11/10/25	4.29	6.92	4.52	0.00	5.67	0.00	7.88	4.49	4.36	0	30.25
11/11/25	5.87	7.32	5.44	0.00	6.62	0.00	8.07	4.84	4.66	0	34.75
11/12/25	3.48	2.39	4.04	0.00	5.17	0.00	8.15	5.23	3.83	0.09	24.23
11/13/25	5.71	4.67	4.88	0.00	6.11	0.00	5.7	1.51	3.35	0.91	27.14
11/14/25	5.3	0.47	4.49	0.00	5.34	0.00	2.76	0.98	2.45	1.87	20.90
11/15/25	6.08	0	5.00	0.00	6.40	0.00	0	0	3.19	2.8	23.47
11/16/25	4.1	0	5.05	0.00	6.46	0.00	0	0	3.14	2.69	21.44
11/17/25	5.3	2.59	6.15	0.00	0.35	0.00	0	0	2.59	0.68	17.66
11/18/25	5.09	3.51	5.69	0.00	0	0.00	1.07	0	2.24	2.24	18.77
11/19/25	5.55	0.37	6.61	0.00	0.21	0.00	8.62	3.58	2.54	2.87	21.73
11/20/25	5.34	0	6.15	0.00	0	0.00	4.44	0.87	2.2	2.59	17.15
11/21/25	5.3	0	5.92	0.00	0	0.00	5.75	0	2.06	2.34	15.62
11/22/25	5.71	0	6.93	0.00	0	0.00	5.00	4.31	3.48	3.22	23.65
11/23/25	5.39	0	5.96	0.00	0	0.00	8.03	7.59	1.81	0	20.75
11/24/25	5.6	0	5.99	0.00	0	0.00	6.74	10.39	2.75	0	24.73
11/25/25	4.2	0	6.35	0.00	0	0.00	10.4	6.54	2.66	0	19.75
11/26/25	6.12	0.24	5.96	0.00	0	0.00	7.54	0.8	3.42	0	16.54
11/27/25	4.52	4.42	6.33	0.00	0	0.00	8.11	4.82	2.86	0	22.95
11/28/25	5.14	3.13	6.26	0.00	0	0.00	4.91	2.36	2.96	0	19.85
11/29/25	0.87	3.48	6.84	0.00	0	0.00	9.2	4.93	4.2	0	20.32
11/30/25	7.13	6.17	7.78	0.00	0	0.00	8.49	7.46	3.97	0	32.51
	0.00	0.00	0.00	0.00	0.00	0.00	0.00	0.00	0.00	0.00	0.00
TOTAL	153.46	88.25	167.36	0.00	89.68	0.00	200.81	105.98	104.27	22.30	731.30
MIN	0.00	0.00	0.00	0.00	0.00	0.00	0.00	0.00	0.00	0.00	0.00
MAX	7.13	10.27	7.78	0.00	6.62	0.00	10.40	10.39	5.64	3.22	34.96
AVE	4.95	2.85	5.40	0.00	2.89	0.00	6.48	3.42	3.36	0.72	23.59

¹ Measured at point of connection at Cactus Reservoir site including production from City 4A. Amount may vary compared to billing.

² Measured at point of connection at Cedar Reservoir site. Amount may vary as compared to billing.

³ City 4A is not included in total. It has been accounted for in the Purchased total.

NOVEMBER 2025 DAILY BOOSTER TOTALS IN ACRE FEET								
DATE	Booster 1	Booster 2	Booster 3	Booster 4	Booster 5	Booster 6-9	Booster 10	Booster 11
10/1/25	0.00	0.00	5.79	0.00	4.38	0.00	0.00	0.00
10/2/25	0.00	0.00	7.16	0.00	3.71	4.20	0.17	0.00
10/3/25	0.00	0.00	2.27	0.00	0.00	5.07	0.00	0.00
10/4/25	0.00	0.00	5.32	0.00	1.13	3.58	0.00	0.00
10/5/25	0.00	0.00	2.81	0.00	0.00	1.79	0.00	0.00
10/6/25	0.00	0.00	2.75	0.00	5.40	3.39	0.00	0.00
10/7/25	0.00	0.00	7.66	0.00	0.00	6.12	0.00	0.00
10/8/25	0.00	0.00	0.71	0.00	3.33	2.82	0.00	0.00
10/9/25	0.00	0.00	4.77	0.00	0.00	8.31	0.00	0.00
10/10/25	0.00	0.00	5.91	0.00	0.00	4.49	0.00	0.00
10/11/25	0.00	0.00	3.07	0.00	0.00	4.84	0.00	0.00
10/12/25	0.00	0.00	9.30	0.00	1.58	5.23	0.00	0.00
10/13/25	0.00	0.00	1.46	0.00	0.00	1.51	0.00	0.00
10/14/25	0.00	0.00	1.88	0.00	0.68	0.98	0.00	0.00
10/15/25	0.00	0.00	0.00	0.00	0.00	0.00	0.00	0.00
10/16/25	0.00	0.00	0.00	0.00	0.00	0.00	0.00	0.00
10/17/25	0.00	0.00	3.21	0.00	2.57	0.00	0.00	0.00
10/18/25	0.00	0.00	2.90	0.00	0.00	0.00	0.00	0.00
10/19/25	0.00	0.00	3.13	0.00	0.00	3.58	0.00	0.00
10/20/25	0.00	0.00	0.00	0.00	7.47	0.87	0.00	0.00
10/21/25	0.00	0.00	0.86	0.00	2.54	0.00	0.00	0.00
10/22/25	0.00	0.00	2.73	0.00	4.17	4.31	0.00	0.00
10/23/25	0.00	0.00	7.28	0.00	0.02	7.59	0.00	0.00
10/24/25	0.00	0.00	7.48	0.00	0.00	10.39	0.00	0.00
10/25/25	0.00	0.00	6.02	0.00	0.00	6.54	0.00	0.00
10/26/25	0.00	0.00	0.14	0.00	3.56	0.80	0.00	0.00
10/27/25	0.00	0.00	8.59	0.00	3.55	4.82	0.00	0.00
10/28/25	0.00	0.00	2.47	0.00	2.72	2.36	0.00	0.00
10/29/25	0.00	0.00	4.47	0.00	4.65	4.93	0.00	0.00
10/30/25	0.00	0.00	9.05	0.00	0.00	4.87	0.00	0.00
	0.00	0.00	0.00	0.00	0.00	0.00	0.00	0.00
TOTAL	0.00	0.00	149.25	0.00	40.11	108.97	0.06	0.00
MIN	0.00	0.00	0.00	0.00	0.00	0.00	0.00	0.00
MAX	0.00	0.00	17.79	0.00	6.98	9.82	0.04	0.00
AVE	0.00	0.00	4.98	0.00	1.29	3.52	0.00	0.00

B. Static Water Levels

All City of Rialto wells are sounded each month, both active and inactive well sites. Depth-to-water is measured from the well head to the static water surface. Increases in depth-to-water represent a decrease in static water level.

Well levels													
Wells Depth to Pump	Historical Maximum Depth to Water	Dec	Jan	Feb	Mar	Apr	May	Jun	Jul	Aug	Sept	Oct	Nov
Chino # 1 (580 ft) In-active well	429'	410'	412'	414'	414'	413'	413'	413'	411'	410'	410'	410'	411'
Chino # 2 (550 ft)	369'	342'	341'	335'	338'	335'	337'	334'	334'	333'	331'	333'	334'
City # 1 (260 ft)	392'	121'	126'	121'	122'	119'	117'	119'	121'	120'	120'	122'	122'
City # 2 (480 ft)	402'	147'	146'	128'	130'	128'	122'	129'	131'	125'	126'	126'	126'
City # 3 (525 ft) Out of Service	505'	414'	414'	415'	416'	416'	414'	417'	418'	418'	417'	417'	417'
City # 4A (528 ft)	406'	381'	374'	377'	375'	373'	362'	367'	370'	366'	360'	359'	363'
City # 5 (385 ft) In-active well	364'	318'	318'	321'	318'	318'	316'	316'	316'	316'	317'	318'	319'
Rialto # 1 (650 ft) In-active well	588'	561'	555'	571'	569'	565'	563'	564'	565'	562'	563'	566'	566'
Rialto # 2 (550 ft) In-active well	502'	499'	501'	496'	495'	502'	496'	498'	498'	497'	496'	494'	496'
Rialto # 3 (509 ft)	478'	472'	473'	473'	472'	472'	470'	470'	472'	471'	471'	474'	474'
Rialto # 4 (450 ft) In-active well	418'	413'	414'	415'	416'	415'	415'	414'	413'	414'	413'	412'	412'
Rialto # 5 (560 ft)	387'	385'	385'	384'	384'	386'	386'	387'	387'	387'	386'	386'	386'
Rialto Well # 7 In-active well	362'	362'	360'	360'	359'	353'	356'	354'	356'	357'	357'	357'	476'
Miro # 3 (563 ft)	492'	484'	484'	484'	484'	483'	483'	481'	480'	479'	480'	480'	478'
EW-1 (780 ft)	480'	475'	474'	472'	475'	475'	474'	475'	460'	471'	467'	480'	477'

II. REGULATORY

All State of California and public health agency regulatory requirements were met.

A. Regulatory Submittals

- Monthly Summary of Distribution System Coliform Monitoring
- NPDES Discharge Letter
- Conservation SAFER Report

Sample Test Result Standards			
Type of Sampling	Units of Measure	Detectable Limit for Reporting	Maximum Contaminant Level
Total Coliform	A	--	--
E. Coli	A	--	--
Nitrate as N	mg/L	0.20	10
Perchlorate (CLO ₄)	µg/L	1.0	6.0
Total Dissolved Solids	mg/L	--	500
P= Present A= Absent mg/L = parts per million µg/L = parts per billion			

Sample Date 11/05/2025	Sample Site Location Results									
	Chino 2	City 2	City 4A	Rialto 3	Rialto 5	Miro 3	EW-1	BLF Cactus	BLF 6-9	OPRT P
Total Coliform	A	A	A	A	A	A	OUT OF SERVICE	A	A	OUT OF SERVICE
E. Coli	A	A	A	A	A	A		A	A	
Nitrate as N	3.0									
Perchlorate (CLO ₄)	1.7*			7.2*	<1.0	8.7*				
Total Dissolved Solids	240	190	290	200	220	260		320	320	

*Sample is from the well head so it is before disinfection & treatment. Treatment is performed before it goes into the distribution system. Water going into the distribution system is <1.0 (non-detect).

B. Sample Site Location Results

Rialto Distribution Sample Results						
November 2025						
Sample Location	Free Cl Res (Field)	Total Coliform	E. Coli	Apparent Color	Odor Threshold	Turbidity
CYCLE 1 - 11/04/25	mg/l	P/A	P/A	Color Units	TON	NTU
335 W. Rialto	1.20	A	A	<3.0	1	<0.10
1228 W. Merrill	1.10	A	A	<3.0	1	0.13
256 N. Fillmore	1.30	A	A	<3.0	1	<0.10
987 W. Grove	1.20	A	A	<3.0	1	<0.10
978 N. Driftwood	1.10	A	A	<3.0	1	<0.10
1451 N. Linden	1.10	A	A	<3.0	1	<0.10
469 W. Jackson	1.10	A	A	<3.0	1	<0.10
935 E. Mariposa	1.10	A	A	<3.0	1	<0.10
1000 N. Joyce	1.10	A	A	<3.0	1	<0.10
766 N. Chestnut	1.10	A	A	<3.0	1	<0.10
149 W. Victoria	1.10	A	A	<3.0	1	0.18
313 E. McKinley	1.20	A	A	<3.0	1	0.32
609 E. South	1.20	A	A	<3.0	1	0.13
273 E. Alru	1.40	A	A	<3.0	1	0.12
1161 S. Lilac	1.20	A	A	<3.0	1	<0.10
101 E. Valley	0.90	A	A	<3.0	1	0.25
CYCLE 2 - 11/12/25	mg/l	P/A	P/A	Color Units	TON	NTU
210 N. Park	1.20	A	A			
101 S. Larch	2.00	A	A			
320 N. Wisteria	1.20	A	A			
861 W. Grove	1.20	A	A			
1168 N. Glenwood	1.20	A	A			
1320 N. Fitzgerald	1.10	A	A			
860 N. Willow	0.97	A	A			
209 E. Cornell	1.10	A	A			
643 E. Margarita	1.10	A	A			
1170 N. Terrace Rd.	1.20	A	A			
681 E. Erwin	1.10	A	A			
402 E. Merrill	1.20	A	A			
261 W. Wilson	1.10	A	A			
532 S. Iris	1.20	A	A			
281 W. Hawthorne	1.20	A	A			
379 W. Valley	1.10	A	A			

Rialto Distribution Sample Results						
October 2025						
Sample Location	Free Cl Res (Field)	Total Coliform	E. Coli	Apparent Color	Odor Threshold	Turbidity
CYCLE 3 – 11/18/25	mg/l	P/A	P/A	Color Units	TON	NTU
236 N. Willow	1.00	A	A			
775 E. Foothill	1.00	A	A			
878 N. Primrose	1.00	A	A			
369 E. Van Koevering	1.00	A	A			
274 W. Valencia	1.40	A	A			
1566 N. Fillmore	1.00	A	A			
932 N. Idyllwild	1.20	A	A			
644 N. Smoketree	1.00	A	A			
605 W. Rosewood	1.00	A	A			
1189 W. Second	1.00	A	A			
775 W. Rialto	1.00	A	A			
211 E. Wilson	1.10	A	A			
595 E. Huff	1.20	A	A			
1005 S. Riverside	1.30	A	A			
794 S. Verde	1.40	A	A			
1055 W. Bloomington	1.20	A	A			
CYCLE 4 - 11/25/25	mg/l	P/A	P/A	Color Units	TON	NTU
375 S. Cactus	1.60	A	A			
101 S. Linden	1.20	A	A			
234 N. Larch	1.60	A	A			
575 N. Driftwood	1.40	A	A			
1355 W. Shamrock	1.20	A	A			
992 N. Yucca	1.30	A	A			
481 W. Cornell	1.40	A	A			
158. E. Shamrock	1.40	A	A			
749 E. Holly	1.30	A	A			
545 E. Victoria	1.20	A	A			
200 N. Sycamore	0.96	A	A			
407 E. Allen	1.30	A	A			
399 E. Montrose	1.40	A	A			
856 S. Orange	1.40	A	A			
911 S. Cactus	1.30	A	A			
220 W. Valley	1.40	A	A			
P/A + Present or Absent						

C. Violations

No violations were received during this reporting period.

D. Source Water Total Dissolved Solids (TDS)

Veolia has a goal of maintaining an acceptable blended TDS level between all its sources. This goal is achieved by shifting production to or from the lowest TDS wells or purchased low TDS water while adhering to the overall water supply strategy and meeting system demands. The TDS was 236 mg/L for the month of November as compared to 250 mg/L in October. The TDS levels are below the secondary maximum contaminant level requirements.

III. HEALTH AND SAFETY

A. Monthly Safety Program Overview

Category	Monthly Statistic
Safety Training Topics	LSR Q3 LSR Q4
Lost Time Incidents, count*	0
Recordable Incidents, count	0
Near Miss Incidents, count	3
Vehicle Incidents, count	0

*A lost time incident has not occurred in the past 4370 days.

IV. CHEMICAL USE

Sodium hypochlorite is the only chemical added to the water system. A total of 2491 gallons of sodium hypochlorite was used in November as compared to 3330 gallons used in October.

V. ELECTRICAL USE

Southern California Edison (SCE) has not provided all of the data for October/ November 2025. We will provide the data as it is received, thus will include yearly usage received to date.

SCE		kWh
Year	Month	Billed Usage
2024	October	529,208
2024	November	266,378
2024	December	247,546
2025	January	360,398
2025	February	294,421
2025	March	223,709
2025	April	428,976
2025	May	505,764
2024	June	575,467
2025	July	842,561
2025	August	669,021
2025	September	752,171

VI. WATER QUALITY COMPLAINTS

No complaints were received during this reporting period.

VII. OPERATIONS UPDATE

The overall operational strategy is to meet the daily water demand. The City of Rialto water system has six operational wells, one of which is owned by the County of San Bernardino and operated by Veolia; Oliver P. Roemer Treatment Plant (OP RTP), which is jointly owned by the City (25%) and West Valley Water District (WVWD); purchased water through the Baseline Feeder (BLF) system from San Bernardino Valley Municipal Water District (SBVMWD); and, if required to meet demand, additional water can be supplied by the City of San Bernardino (CSB) through the BLF for emergency supply only with no guarantee of actual delivery. Water produced from City Well 4A discharges into the BLF and its production is included in deliveries from that shared transmission line when City Well 4A is in service.

The overall pumping strategy is based on adjudicated rights, well availability, remediation requirements, and quality of source, cost to operate, and varying weather conditions. TDS effluent concentrations for the City of Rialto WWTP are taken into consideration when operating the facilities and water sources.

A. Operational Wells

EW-1 well was out of service due to pump issues. OPRTP meter was turned off in October.

B. Valve Activity

On the basis of information collected in 2019, Veolia now has a baseline assessment of all valves and has initiated a new cycle of valve exercising. Five valves were exercised in the month of November.

Valve Turning Progress	
	Valves Turned
2020	530
2021	340
2022	463
2023	750
2024	379
2025	334

C. Hydrant Flushing

There are 63 hydrant/dead ends that are flushed annually to maintain water quality. Eight flushings were performed in November.

Hydrant/Dead End Flushing Progress	
	2025
January	0
February	0
March	6
April	6
May	11
June	0
July	0
August	29
September	3

October	0
November	8
Total	55
Progress % (100)	

D. Sanitary Survey

DDW performed field site visits on May 22 and August 22, 2024. The results of the sanitary survey were received on September 19, 2024. All minor deficiencies have been corrected and submitted to DDW.

VIII. ASSET MANAGEMENT

The following work orders were completed by Water production staff for the month of November:

- Preventive Maintenance –299
- Corrective Maintenance –0
- Predictive Maintenance –0

215– PMs planned for December 2025

A. Main Breaks, Service Leaks, Adverse Water Quality and Health/Safety Issues

The following work orders were completed by Water distribution staff for the month of November:

- Main line – 1
- Service line – 6
- Hydrants - 3
- Angle Meter Stop – 8
- Meter Box & Lid Replacement – 11
- Meter Leaks/ Replacements - 25

B. Major Equipment and/or Machinery Outages

EW-1 well was out of service due to pump issues. OP RTP meter was turned off in October.

IX. RAINFALL TOTALS

Highland - Los Angeles Basin - Station 251

Month Year	Total ETo (in)	Total Precip (in)	Avg Sol Rad (Ly/day)	Avg Vap Pres (mBars)	Avg Max Air Temp (°F)	Avg Min Air Temp (°F)	Avg Air Temp (°F)	Avg Max Rel Hum (%)	Avg Min Rel Hum (%)	Avg Rel Hum (%)	Avg Dew Point (°F)	Avg Wind Speed (mph)	Avg Soil Temp (°F)
Jan 2025	2.81 K	1.87	261	5.4	66.4 K	38.9	52.5	65	26	42	27.1	4.0 K	49.8 K
Feb 2025	2.87	4.35	321	8.9 K	71.3 K	45.9 K	57.8 K	80	37	56 K	40.7 K	3.5	53.8
Mar 2025	3.66	3.01	389	9.7	67.2 K	45.8	55.7	87	43	65	43.5	4.0 K	56.8
Apr 2025	4.90	1.39	480 K	9.8	73.3	48.8	60.3	82	34	56	43.5	4.2 K	61.2 K
May 2025	6.07	3.76	558	13.1	80.1	55.7	66.9 K	85	39	61 K	51.7 K	4.3	66.6 L
Jun 2025	7.31	2.58	666	15.0	88.8	59.5 K	73.1	82	33	55	55.3	4.5 K	71.4
Jul 2025	8.05 K	1.96	676	15.1	92.1 K	60.9 K	75.6 K	80	27	50 L	55.5 L	4.5 K	73.6
Aug 2025	7.58	1.90 K	590	15.8	96.7	64.9	80.2	74	25	45	56.7	4.0 K	74.6
Sep 2025	5.31	2.32	452	16.7	89.6	64.1	75.6	79	35	56	58.2	3.8 K	73.7
Oct 2025	3.98 K	1.44	381	12.3	81.9 K	53.4	66.6 K	81	33	56 K	49.4 K	3.3 K	66.5
Nov 2025	2.39	3.31 K	260	10.6 K	75.7	49.6 K	61.2	82	37	59 K	45.7 K	2.8	60.3
Tots/Avg	54.93	27.9	458	12.0	80.3	53.4	66.0	80	34	55	47.9	3.9	64.4

RIALTO WASTEWATER

MONTHLY OPERATIONS REPORT

Reporting Period:
November 2025

Prepared for: - Rialto Water Services



Prepared by: - Veolia Water West Operating Services



RIALTO WASTEWATER OPERATIONS AND MAINTENANCE REPORT

Contents

EXECUTIVE SUMMARY

- 1. Collection System / Customer Service Log**
 - a. Collection System Activities
 - b. S.S.O. dates
 - c. Customer Service Call Outs
- 2. Wastewater Treatment Plant - Monthly Overview**
 - a. Significant events during the month
- 3. Treatment Facility Performance / Laboratory Activities**
 - a. See attached Monthly Performance Summary
 - B. Summary of Notices and Laboratory Tests / Reports filed with government agencies
 - c. Effluent Specifications Exceedance Discussion
- 4. Monthly Safety Program Overview**
- 5. Biosolids, Chemicals, and Utilities**
 - a. Monthly Biosolids Production
 - b. Monthly Chemical Consumption
 - c. Monthly Utilities Consumption
- 6. Odor Complaints / Actions Taken**
- 7. Major Equipment and/or Machinery Outages**
- 8. Outside Agency Activities during the Month**
 - a. Government agency or property insurance inspections
 - b. Government agency environmental, health, or safety tests/monitoring
 - c. Government agency notice of violation received
 - d. Government agency monitoring
 - e. Other matters of concern
- 9. Complaint Logs**

TABLES

- Treatment Facility – Monthly Performance Summary
- Collection System- Monthly Pipe Cleaned

RIALTO WASTEWATER

MONTHLY OPERATIONS REPORT

EXECUTIVE SUMMARY

Highlights of this month's Wastewater O&M report include the following:

- The treatment plant performed well and met all compliance parameters.
- There was one residential call-out for sewer-related issues.

1. Collection System/Customer Service Log

a. Collections group activities this month:

Category	Current Month Statistics	Prior Month Statistics	2025 Year to Date Statistics
Sanitary sewers are cleaned using the conventional method, including feet, which includes "Hot spot cleaning."	22,805	23,473	235,281
Sanitary sewers assessed using the SL-RAT method, feet	0	0	21,112
CCTV Inspection, miles (26 is the annual goal)*	2.09	2.93	25.8
Manhole Inspections	0	0	39
USA Dig Alert Markings, count	23	26	347
Residential call-outs	1	0	22
Sanitary sewer overflows	0	0	2

b. S.S.O. N/A

c. Customer Service Call Outs – See Item 9 for details.

2. Wastewater Treatment Plant – Monthly Overview

- NPDES discharge compliance parameters were achieved.

a. Significant events during the month were:

None

3. Treatment Facility Performance/Laboratory Activities

- See the attached Table 1, Monthly Performance Summary.
- Summary of Notices and Laboratory Tests/Reports filed with government agencies.
The monthly submittal of State/Federal discharge monitoring reports was completed promptly.
- Effluent specification exceedance discussion
See Section 2 above. N/A

4. Monthly Safety Program Overview

Category	Monthly Statistic
Safety Training Topics	0
Lost Time Incidents count*	0
Recordable Incidents, count	0
Near Miss Incidents, count	0
Vehicle Incidents, count	0

*A lost time incident has not occurred since 9-3-2020, totaling 1,913 days.

5. Biosolids, Chemicals, and Utilities

a. Monthly Biosolids Production

Biosolids	Current Month Statistics	Prior Month Statistics	2025 Year-to-Date Statistics
Wet Tons Produced	1074.56	1388.75	12,476.56

b. Monthly Chemical Consumption

Chemical	Current Month Gallons Used	Prior Month Gallons Used
Sodium Hypochlorite, Tertiary Disinfection	28,886	29,735
Sodium Bisulfite, Discharge Dechlorination	10,031	10,014
Ferrous Chloride, Digester Gas Conditioning	4,180	3,260
Polymer, Gravity Belt Thickener	454	491
Polymer, Belt Filter Press	722	726
Alum, Tertiary Filters	1	1

c. Monthly Utilities Consumption

Utility		Prior Month Statistics
Electricity WWTP, KWH	377336	385693
Electricity Lilac LS, KWH	895	784
Electricity Sycamore LS, KWH*	539	478
Electricity Ayala LS, KWH	8561	8274
Electricity Agua Mansa LS, KWH	2867	2593
Electricity Cactus LS, KWH	1593	1590
Electricity Ramrod LS, KWH	680	591
Frisbee Park LS, KWH	680	703
El Rancho Verde LS, KWH	2085	2426
Natural Gas WWTP, Therms	4569	3251

* LS is in bypass mode, pending CIP completion

6. Odor Complaints Received/Actions Taken

None

7. Major Equipment and/or Machinery Outages

- Sludge Holding Tank
- Aeration Basin #3 is currently offline.

8. Outside Agency Activities during the Month

- a. Government agency or property insurance inspections
None
- b. Government agency environmental, health, or safety tests/monitoring
Permit testing was completed for this month
- c. Government agency notices of violation received
None
- d. Government agency monitoring
Routine monitoring reports were submitted.
- e. Other matters of concern
None

9. Customer Service Callout Details Log

Date	Address	Comments	Personnel	Manhole	To Manhole
11/25/2025	2257 N Sycamore	The customer called regarding a blocked sewage line. Upon inspection, roots were found in the customer's lateral. Customer was notified issue was their responsibility.	ET		

Table 1 Summary

Table 1 Summary

November 2025

Date	Rialto	Rialto	Rialto	Rialto	Rialto	Rialto WRF Effluent			Rialto WRF Influent		Rialto WRF Effluent		
	Flow	Effluent Flow	BOD	BOD	Influent BOD Load	Effluent BOD	Effluent BOD Load	BOD % Removal	Influent TSS	Influent TSS Load	Effluent TSS	Effluent TSS Load	TSS % Removal
	MGD	MGD	mg/l	mg/l	lbs/day	mg/L	lbs/day	%	mg/L	lbs/day	mg/L	lbs/day	%
11/1/2025	6.17	6.80											
11/2/2025	7.00	7.65											
11/3/2025	7.02	7.28	350	350	20,491	<2.5	151.79	99.30	260.00	15222.00	0.80	49.00	99.70
11/4/2025	7.13	7.46											
11/5/2025	6.43	7.06											
11/6/2025	6.67	7.04											
11/7/2025	6.86	7.24	360	360	20,596	<5.0	301.91	98.60					
11/8/2025	6.56	7.12											
11/9/2025	6.99	7.44											
11/10/2025	6.98	7.54	390	390	22,703	<5.0	314.42	98.70	160.00	9314.00	0.80	50.00	99.50
11/11/2025	6.70	7.11											
11/12/2025	7.51	7.29											
11/13/2025	6.39	7.76											
11/14/2025	6.98	7.61	210	210	12,225	2.9	184.06	98.60					
11/15/2025	7.58	6.83											
11/16/2025	7.22	8.49											
11/17/2025	7.48	7.62	270	270	16,843	3.1	197.01	98.90	120.00	7486.00	1.00	64.00	99.20
11/18/2025	7.12	7.27											
11/19/2025	6.55	7.13											
11/20/2025	6.77	7.39											
11/21/2025	7.06	7.51	260	260	15,309	3.2	200.43	98.80					
11/22/2025	7.16	7.05											
11/23/2025	6.40	7.49											
11/24/2025	7.00	7.32	410	410	23,936	<5.0	305.24	98.80	260.00	15179.00	1.00	61.00	99.60
11/25/2025	6.84	7.27											
11/26/2025	6.81	7.29	340	340	19,310	3.2	194.56	99.10					
11/27/2025	7.34	8.24											
11/28/2025	7.28	6.99											
11/29/2025	5.58	6.83											
11/30/2025	6.60	6.83											
Minimum	5.58	6.80	210	210	12,225	<2.5	151.79	98.60	120.00	7486.00	0.80	49.00	99.20
Maximum	7.58	8.49	410	410	23,936	<5.0	314.42	99.30	260.00	15222.00	1.00	64.00	99.70
Total	206.18	219.95	2,590	2,590	151,414	<29.9	1849.40	790.70	800.00	47201.00	3.60	223.00	398.00
Average	6.87	7.33	324	324	18,927	<3.7	231.18	98.90	200.00	11800.00	0.90	56.00	99.50

Table 2 Summary

Table 2 Summary

November 2025

Date	Rialto	Rialto WRF\Effluent		Rialto WRF\Eff		Rialto WRF\Effluent		Rialto	Rialto
	Influent Conductivity	Eff Conductivity Daily Ave	Influent COD	Final Effluent COD	Influent TDS	Filter Effluent TDS	EFF FINAL TDS	Influent Inorganic Nitrogen	Effluent Inorganic Nitrogen
	(uS/cm)	(uS/cm)	mg/l	mg/l	mg/l	mg/l	mg/L	mg/L	mg/l as N
11/1/2025	1446.00	840.00							
11/2/2025	1203.00	863.00							
11/3/2025	1560.00	868.00							
11/4/2025	1526.00	893.00	740	22.0	520.00	420.00	470.00	40.00	7.00
11/5/2025	1498.00	882.00							
11/6/2025	1565.00	872.00							
11/7/2025	1526.00	891.00							
11/8/2025	1191.00	920.00							
11/9/2025	1112.00	918.00							
11/10/2025	1640.00	893.00							
11/11/2025	1455.00	905.00							
11/12/2025	1685.00	914.00							
11/13/2025	1375.00	916.00							
11/14/2025	1527.00	903.00							
11/15/2025	1263.00	889.00							
11/16/2025	1175.00	835.00							
11/17/2025	1445.00	851.00							
11/18/2025	1447.00	867.00							
11/19/2025	1487.00	881.00							
11/20/2025	1360.00	885.00							
11/21/2025	1157.00	868.00							
11/22/2025	1433.00	882.00							
11/23/2025	1394.00	913.00							
11/24/2025	1442.00	927.00							
11/25/2025	1514.00	921.00							
11/26/2025	1554.00	912.00							
11/27/2025	1497.00	932.00							
11/28/2025	1625.00	929.00							
11/29/2025	1488.00	958.00							
11/30/2025	1362.00	963.00							
Minimum	1112.00	835.00	740	22.0	520.00	420.00	470.00	40.00	7.00
Maximum	1685.00	963.00	740	22.0	520.00	420.00	470.00	40.00	7.00
Average	1432.00	896.00	740	22.0	520.00	420.00	470.00	40.00	7.00

Table 3 Summary

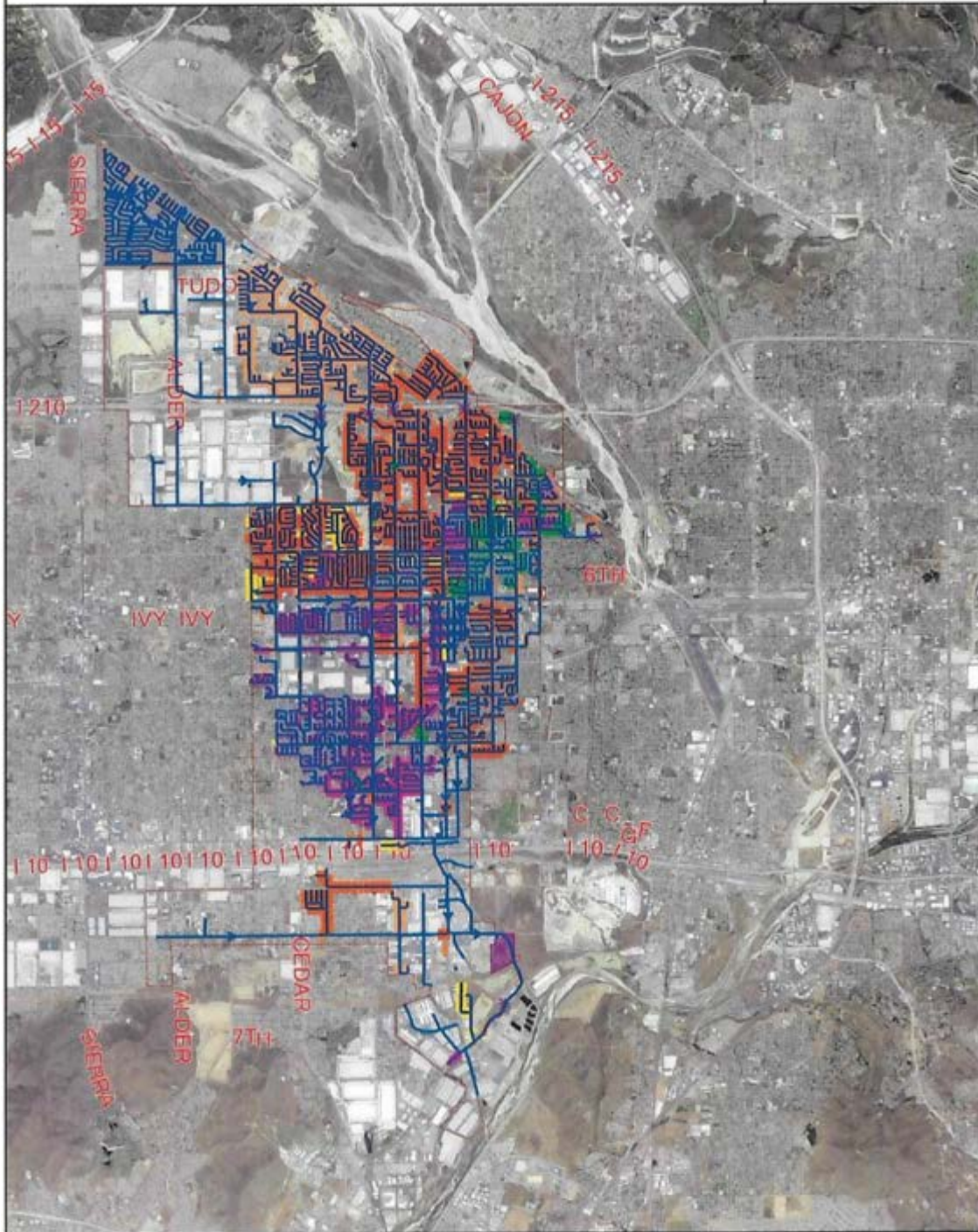
Table 3 Summary

November 2025

Date	Rialto WRFInfluent		Rialto WRFEffluent		Rialto WRFIEff		Rialto WRFIEffluent		Tranfer	Tranfer	Rialto	Tranfer Data
	Influent pH	24 hr avg. effl. pH	Effluent Temp	Effluent Ammonia	Effluent Total Coliform	Effluent Coliform 7 Day Median	Effluent Cyanide, Free Available	Eff Di(2-ethylhexyl) phthalate (DEHP)	FIT- 8321 ADG #2 Flow	FIT- 8321 ADG #2 Flow	Natural Gas Daily Use	FIT- 8321 ADG #2 Flow
	SU	SU	Deg C	mg/L	MPN/100mL	MPN/100ML	ug/L	ug/l	cu ft/day	cu ft/day	cf/day	cu ft/day
11/1/2025	6.77	7.55	26.40		2.0	<1.80			133809.00	133809.00	2300.00	133809.00
11/2/2025	7.69	7.55	26.60		<1.8	<1.80			122937.00	122937.00	22900.00	122937.00
11/3/2025	6.95	7.57	26.40	0.07	<1.8	<1.80			151205.00	151205.00	21400.00	151205.00
11/4/2025	6.63	7.54	26.30		2.0	<1.80		<5.00	148134.00	148134.00	22500.00	148134.00
11/5/2025	7.30	7.58	26.50		2.0	2.00			137219.00	137219.00	19900.00	137219.00
11/6/2025	6.68	7.48	26.20		<1.8	<1.80			140244.00	140244.00	800.00	140244.00
11/7/2025	7.23	7.31	26.20		<1.8	<1.80			140530.00	140530.00	2600.00	140530.00
11/8/2025	7.39	7.32	26.60		<1.8	<1.80			133937.00	133937.00	17900.00	133937.00
11/9/2025	7.29	7.38	26.70		<1.8	<1.80			132975.00	132975.00	22300.00	132975.00
11/10/2025	6.91	7.38	26.30	0.06	1.8	<1.80			145313.00	145313.00	23800.00	145313.00
11/11/2025	7.00	7.34	26.40		<1.8	<1.80			126462.00	126462.00	22800.00	126462.00
11/12/2025	7.40	7.30	26.60		<1.8	<1.80			140475.00	140475.00	21900.00	140475.00
11/13/2025	6.91	7.26	26.30		<1.8	<1.80			144317.00	144317.00	23200.00	144317.00
11/14/2025	7.28	7.28	26.50		<1.8	<1.80			139830.00	139830.00	22400.00	139830.00
11/15/2025	7.26	7.19	26.30		<1.8	<1.80			148751.00	148751.00	21900.00	148751.00
11/16/2025	6.35	7.17	25.50		2.0	<1.80			126172.00	126172.00	21100.00	126172.00
11/17/2025	6.53	7.26	25.40	0.07	<1.8	<1.80			144144.00	144144.00	22900.00	144144.00
11/18/2025	8.01	7.30	25.20		<1.8	<1.80			137421.00	137421.00	1300.00	137421.00
11/19/2025	7.45	7.30	24.90		2.0	<1.80			145766.00	145766.00	1200.00	145766.00
11/20/2025	7.50	7.26	25.00		<1.8	<1.80			137112.00	137112.00	22900.00	137112.00
11/21/2025	7.41	7.28	25.00		<1.8	<1.80			129007.00	129007.00	22700.00	129007.00
11/22/2025	7.19	7.26	24.40		<1.8	<1.80			142155.00	142155.00	21000.00	142155.00
11/23/2025	7.56	7.31	24.40		<1.8	<1.80			157137.00	157137.00	23600.00	157137.00
11/24/2025	7.21	7.37	24.70	0.08	<1.8	<1.80			163160.00	163160.00	27900.00	163160.00
11/25/2025	7.06	7.39	24.80		<1.8	<1.80			148820.00	148820.00	16400.00	148820.00
11/26/2025	7.27	7.36	24.20		<1.8	<1.80			158667.00	158667.00	22200.00	158667.00
11/27/2025	6.97	7.33	24.70		<1.8	<1.80			160757.00	160757.00	23800.00	160757.00
11/28/2025	7.23	7.37	24.70		<1.8	<1.80			179038.00	179038.00	22700.00	179038.00
11/29/2025	7.10	7.36	24.50		<1.8	<1.80			160008.00	160008.00	20300.00	160008.00
11/30/2025	7.55	7.34	24.40		<1.8	<1.80			167710.00	167710.00	21600.00	167710.00
Minimum	6.35	7.17	24.20	0.06	<1.8	<1.80		<5.00	122937.00	122937.00	800.00	122937.00
Maximum	8.01	7.58	26.70	0.08	2.0	2.00		<5.00	179038.00	179038.00	27900.00	179038.00
Average	7.17	7.36	25.60	0.07	<1.8	<1.81		<5.00	144774.00	144774.00	18673.00	144774.00

Monthly Sewer Line Cleaned

Map Centre Coords
x: 2058938 y: 567122
Date Printed: 12/23/2025
Scale: 1:80000



**RIALTO
CIP MONTHLY OPERATIONS
REPORT**

Prepared for: Rialto Water Services

Prepared by: Veolia Water West Operating Services



Capital/Facility Improvement Project Updates through December, 2025

1. Rialto Solids Upgrade Project:

12/16/2025 - On 8/12/2025 city council approved the FCWA for construction. Design drawings are still on track to be issued by year's end. Project kickoff meeting was held on Wednesday 12/26/2025

01/13/2026 - CONSTRUCTION: On 1/9/2026 a pre-final 100% comments log review meeting was held. AECOM is reviewing Veolia's responses to comments and RFI's. DESIGN: Final invoice for design project has been submitted and pending approval from the city.

2. Digester 1 Activation:

12/16/2025 - Work will be completed after Solids Handling Project completion. To date there is no change in the status of the project.

01/13/2026 - Work will be completed after Solids Handling Project completion. To date there is no change in the status of the project.

3. Sycamore Sewer Trunk Line Project (Phase II):

12/16/2025 - RFP documents were sent for review on 8/15/2023. Design has been completed for this project. Funding has been identified and a Project Initiation & Management Memo (PIMM) was sent to the city on 8/13/2025. The project needs to be completed in order to get the recently upgraded Sycamore Sewer Lift Station back online.

01/13/2026 - A project initiation memo (PIM) was submitted to the city for review on August 13th, 2025. Pending action for next steps from the city. Ideally this project needs to be completed during summer months due to proximity to schools.

4. Etiwanda Ave Water Improvement Project:

12/16/2025 - A draft design has been completed and is under review. Funding has been identified and a PIM was sent to the city on 8/13/2025. Draft design meeting was held on Tuesday 11/25/2025.

01/13/2026 - Draft design comments and changes are being implemented to move to the next design phase. A PIM was submitted to the city for review on August 13th, 2025. Pending action for next steps from the city.

5. Acacia Sewer Trunk Line Project (Phase III):

12/16/2025 - This project will commence after the Sycamore Phase 2 and Etiwanda Water Improvements projects are completed.

01/13/2026 - No update on project status

6. City Well 3A (Phase 1):

12/16/2025 - Water quality samples and a preliminary draft report were received on 11/13/2025 and sent to the city for review. On 11/12/2025 an invoice was sent for payment and approval for phase 1. The final report was sent to the city on 11/19/2025 and reviewed by the city. Veolia is drafting the RFP for the design (phase 2)

01/13/2026 - On 12/22/2026 direction was given to Veolia to initiate a new PIM for the Well 3A Project. The PIM is being finalized. The RFP for phase II design has been postponed. Final invoices for phase I have been submitted and pending approval from the city.

7. Advanced Metering Infrastructure (AMI) Project:

12/16/2025 - The FCWA was approved by the city council on 12/09/2025. Meter and site survey will take place the week of 12/15/2025. Project kickoff meeting is tentatively scheduled for the first week of January 2026.

01/13/2026 - NTP was issued on 01/09/2026 to Aqua-Metric. Awaiting responses on RFI's to the city for roll-off container placement and power at one of the proposed base station sites. Once the RFI for the power concern is addressed, procurement of the telecom and base stations will take place.

CIS workflow and a touchpoint meeting will be scheduled for software integration requirements. Progress invoice submitted in December, pending approval from the City.