



MEMORANDUM

To: Daniel Casey, City of Rialto

From: Alex Pohlman, Kimley-Horn and Associates, Inc.

Date: December 2, 2024

Subject: Willow Avenue Trailer Parking Project – Air Quality and Greenhouse Gas Emissions Analysis

Purpose

The purpose of this memorandum is to evaluate the air quality and greenhouse gas (GHG) emissions associated with construction and operation of the proposed Willow Avenue Trailer Parking Project (Project), located in Rialto, California.

Project Location

The Project site is a 4.04-acre site located at 2175 South Willow Avenue, Rialto, California 92316. The Project site is currently developed with trailer storage and repair services on APN 0258-041-28 and APN 0258-041-29. The Project site is surrounded by industrial and other similar uses; refer to **Exhibit 1: Local Vicinity Map**. The site is zoned as M-2 General Manufacturing within the Agua Mansa Specific Plan. The nearest sensitive receptors are located approximately 1,400 feet (0.27-mile) to the northeast on South Date Avenue.

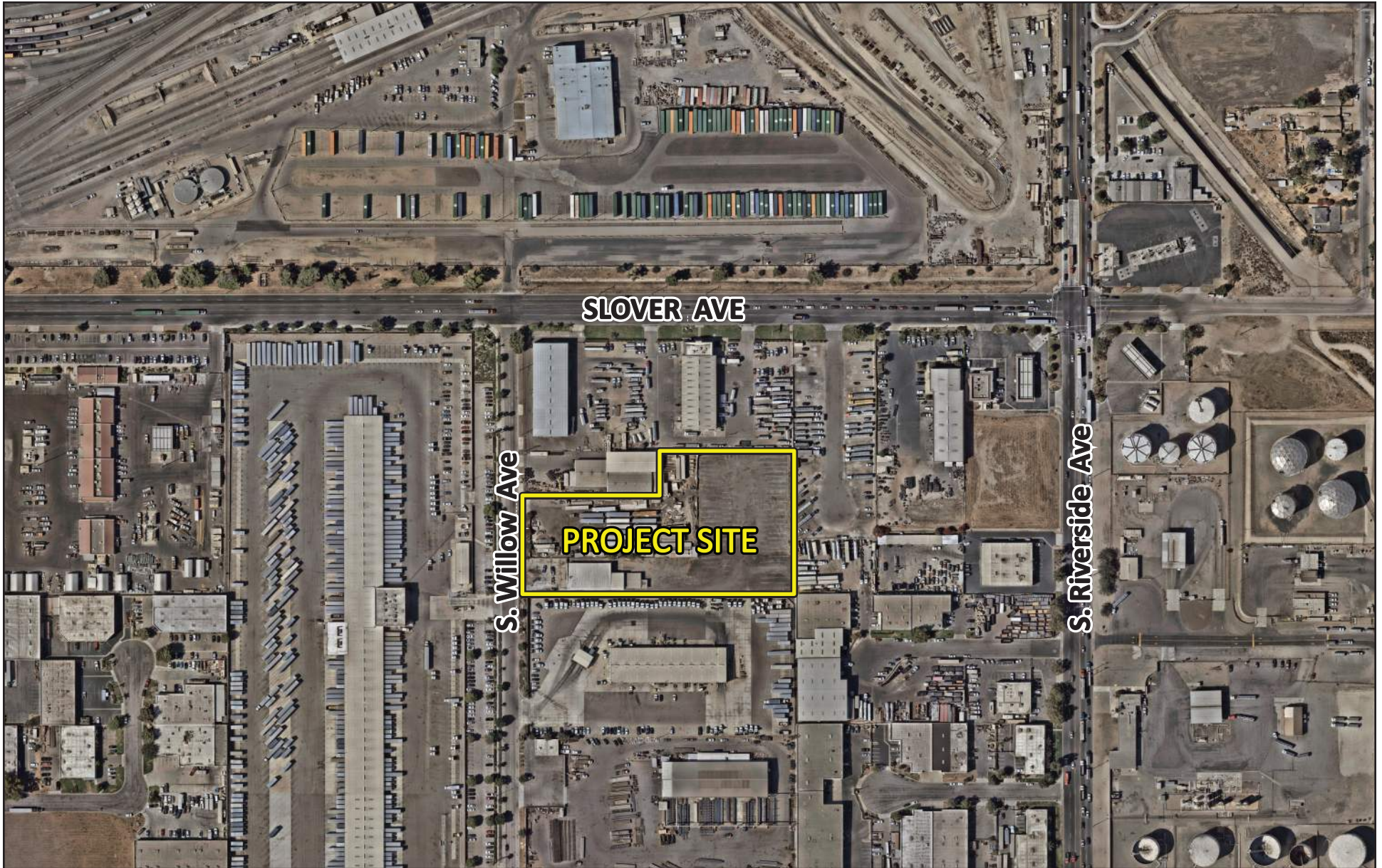
Project Description

The Project involves the modification of the existing 4.04-acre site that currently serves two truck trailer storage sites. The proposed plan would consolidate the site into one land use. An existing 5,800-square-foot office building would remain in place. The Project proposes 141 truck/trailer parking stalls, refer to **Exhibit 2: Preliminary Site Plan**. Additional improvements would include a fourteen-foot wall along the South Willow Avenue frontage and two gates. The proposed traffic operations would not be altered from the current uses.¹

¹ Kimley-Horn and Associates. *Level of Service (LOS) and Vehicle Miles Traveled (VMT) Screening Memorandum for the 2175 S. Willow Avenue Warehouse Project in the City of Rialto*. November 2024. Page 4.

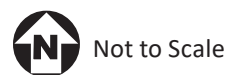
Construction Schedule

Project construction is anticipated to begin November 2025 and continue for approximately 6 months. Project construction would include: (1) demolition, (2) site preparation, (3) grading, (4) building construction, (5) paving, and (6) architectural coating. Demolition activities are anticipated to generate 100 tons of building materials and 2,000 tons of pavement materials, to be disposed of three miles away at Recycled Aggregate Materials Company (RAMCO) Rialto (located at 250 E. Santa Ana Ave, Bloomington, CA 92316).



Source: Nearmap

EXHIBIT 1: Local Vicinity Map
Willow Avenue Trailer Parking Project



Air Quality Background

The Project site is located in the South Coast Air Basin (Basin) which includes parts of San Bernardino, Los Angeles, and Riverside counties and all of Orange County. The South Coast Air Quality Management District (SCAQMD) and the California Air Resources Board (CARB) manage air quality within the Basin.

As part of its enforcement responsibilities, the United States Environmental Protection Agency (U.S. EPA) requires each state with nonattainment areas to prepare and submit air quality attainment plans (State Implementation Plans). The primary purpose of an air quality attainment plan is to bring an area that does not attain the National Ambient Air Quality Standards (NAAQS) and the California Ambient Air Quality Standards (CAAQS) in accordance with the Federal Clean Air Act and the California Clean Air Act. Air quality attainment plans outline emissions limits and control measures to achieve and maintain the CAAQS and NAAQS by the earliest practical date. In addition, air quality plans are developed to ensure that an area maintains a healthful level of air quality based on the NAAQS and the CAAQS. The Air Quality Management Plan (AQMP) for the Basin is prepared by SCAQMD and the Southern California Association of Governments (SCAG). The AQMP provides policies and control measures that reduce emissions to attain both NAAQS and CAAQS.

South Coast Air Quality Management District Thresholds

Mass Emissions Thresholds

The SCAQMD significance criteria may be relied upon to make the above determinations. According to the SCAQMD, an air quality impact is considered significant if a proposed project would violate any ambient air quality standard, contribute substantially to an existing or projected air quality violation, or expose sensitive receptors to substantial pollutant concentrations. The SCAQMD has established thresholds of significance for air quality during project construction and operations, as shown in **Table 1: South Coast Air Quality Management District Emissions Thresholds**.

Table 1: South Coast Air Quality Management District Emissions Thresholds		
Pollutant	Average Daily Emissions (pounds/day)	
	Construction	Operations
Reactive Organic Gases (ROG)	75	55
Carbon Monoxide (CO)	550	550
Nitrogen Oxides (NO _x)	100	55
Sulfur Oxides (SO _x)	150	150
Coarse Particulates (PM ₁₀)	150	150
Fine Particulates (PM _{2.5})	55	55
Source: South Coast Air Quality Management District, <i>South Coast AQMD Air Quality Significance Thresholds</i> , March 2023.		

Localized Significance Thresholds

The SCAQMD has developed localized significance thresholds (LSTs) for emissions of nitrogen oxides (NO_x), carbon monoxide (CO), particulate matter 10 microns in diameter or less (PM₁₀), and particulate matter 2.5 microns in diameter or less (PM_{2.5}) generated at new development sites (off-site mobile source emissions are not included in the LST analysis). LSTs represent the maximum emissions that can be generated at a project site without expecting to cause or substantially contribute to an exceedance of the most stringent NAAQS or CAAQS. LSTs are based on the ambient concentrations of that pollutant within the Project source receptor area (SRA), as demarcated by the SCAQMD, and the distance to the nearest sensitive receptor. LST analysis for construction is applicable for all projects that disturb 5.0 acres or less on a single day.

The Project is located within SCAQMD SRA 34 (Central San Bernardino Valley). **Table 2: Localized Significance Thresholds** shows the LSTs for a 1-acre, 2-acre, and 5-acre project site in SRA 34 with sensitive receptors located within 25 meters. LSTs associated with all acreage categories are provided in **Table 2** for informational purposes. **Table 2** shows that the LSTs increase as acreages increase. It should be noted that LSTs are screening thresholds and are therefore conservative. The construction LST acreage is determined based on daily acreage disturbed. The operational LST acreage is based on the total area of the Project site.

Table 2: Localized Significance Thresholds				
Project Size	Pollutant (Construction/Operations)			
	NO_x – lbs./day	CO – lbs./day	PM₁₀ – lbs./day	PM_{2.5} – lbs./day
1 Acre	118/118	667/667	4/1	3/1
2 Acres	170/170	972/972	7/2	4/1
5 Acres	270/270	1,577/1,577	13/4	8/2
NO _x = Nitrogen Oxides; CO = Carbon Monoxide; PM ₁₀ = Particulate Matter 10 microns in diameter or less; PM _{2.5} = Particulate Matter 2.5 microns in diameter or less				
Source: South Coast Air Quality Management District, <i>Localized Significance Threshold Methodology</i> , July 2008.				

Air Quality Impacts

Threshold (a) Conflict with or obstruct implementation of the applicable air quality plan.

According to the SCAQMD, a project is consistent with the AQMP if it would not result in an increase in the frequency or severity of existing air quality violations or cause or contribute to new violations or delay timely attainment of the NAAQS or CAAQS or the interim emission reductions specified in the AQMP.

Pursuant to the Federal Clean Air Act, the SCAQMD is required to reduce criteria pollutant emissions for which the Basin is in non-attainment of the NAAQS (e.g., ozone and PM_{2.5}). The SCAQMD's 2022 AQMP contains a comprehensive list of pollution control strategies directed at

reducing emissions and achieving the NAAQS. NO_x and Reactive Organic Gases (ROG) are precursor emissions that form ozone in the atmosphere in the presence of sunlight where the pollutants undergo complex chemical reactions.

The SCAQMD's California Environmental Quality Act (CEQA) Handbook, identifies two key indicators of consistency with the AQMP:

1. Whether a project will result in an increase in the frequency or severity of existing air quality violations or cause or contribute to new violations or delay timely attainment of air quality standards or the interim emission reductions specified in the AQMP.
2. Whether a project will exceed the assumptions in the AQMP based on the year of project buildout and phase.

The violations to which Consistency Criterion No. 1 refers are CAAQS and NAAQS. As shown in **Table 3** and **Table 4** below, the Project would not exceed the SCAQMD's construction or operational thresholds and would therefore not violate any CAAQS or NAAQS. Thus, the Project would be consistent with the first criterion.

Concerning Consistency Criterion No. 2, the AQMP contains air pollutant reduction strategies based on SCAG's latest growth forecasts, and SCAG's growth forecasts were defined in consultation with local governments and with reference to local general plans. The proposed Project is consistent with the current industrial land use designation and development density presented in the General Plan and therefore would not exceed the population or job growth projections used by the SCAQMD to develop the AQMP. Thus, no impact would occur, as the Project is also consistent with both the first and second criterion. As the Project is consistent with the SCAQMD consistency criteria, the Project would not conflict with or obstruct the implementation of the AQMP.

Mitigation Measures: No mitigation is required.

Level of Significance: Less than significant impact.

Threshold (b) Result in a cumulatively considerable net increase of any criteria pollutant for which the project region is in non-attainment under an applicable federal or State ambient air quality standard.

Construction Emissions

Project construction would generate short-term emissions of criteria air pollutants. The criteria pollutants of primary concern within the Project area include O₃-precursor pollutants (i.e., ROG and NO_x), PM₁₀, and PM_{2.5}. Construction-generated emissions are short-term and of temporary duration, lasting only as long as construction activities occur, but would be considered a

significant air quality impact if the volume of pollutants generated exceeds the SCAQMD's thresholds of significance.

Project construction would result in the temporary generation of emissions resulting from site demolition, site preparation, grading, motor vehicle exhaust associated with construction equipment and worker trips, and the movement of construction equipment. Emissions of airborne particulate matter are largely dependent on the amount of ground disturbance associated with grading activities as well as weather conditions and the appropriate application of water.

The duration of Project construction activities is estimated to be approximately 6 months, beginning November 2025 and completed April 2026.² Project construction-generated emissions were calculated using California Emissions Estimator Model version 2022 (CalEEMod), which is designed to model emissions for land use development projects, based on typical construction requirements. See **Appendix A: Air Quality and GHG Data** for more information regarding the construction assumptions used in this analysis. Predicted maximum daily construction-generated emissions for the proposed Project are identified in **Table 3: Project Construction Emissions**.

Table 3: Project Construction Emissions						
Construction Year	Emissions (pounds per day)¹					
	ROG	NO_x	CO	SO₂	PM₁₀	PM_{2.5}
2025	3.39	31.73	31.20	0.05	9.26	5.25
2026	1.71	15.04	18.25	0.03	3.60	1.98
<i>SCAQMD Threshold</i>	<i>75</i>	<i>100</i>	<i>550</i>	<i>150</i>	<i>150</i>	<i>55</i>
Threshold Exceeded?	No	No	No	No	No	No
ROG = Reactive Organic Gases; NO _x = Nitrogen Oxides; CO = Carbon Monoxide; SO ₂ = Sulfur Dioxide; PM ₁₀ = Particulate Matter 10 microns in diameter or less; PM _{2.5} = Particulate Matter 2.5 microns in diameter or less						
1. SCAQMD Rule 403 Fugitive Dust applied. The Rule 403 reduction/credits include the following: properly maintain mobile and other construction equipment; replace ground cover in disturbed areas quickly; water exposed surfaces three times daily; water all haul roads twice daily; and limit speeds on unpaved roads to 15 miles per hour. Reductions percentages from the SCAQMD CEQA Handbook (Tables XI-A through XI-E) were applied. No mitigation was applied to construction equipment.						
Source: CalEEMod version 2022. Refer to Appendix A for model outputs.						

² The exact date construction would commence is not known at the time of this analysis. Therefore, construction was modeled to commence in November 2025. However, emissions in future years (i.e., due to a later construction start date) would be lower due to phased-in emissions standards, inspection and maintenance requirements, and fleet turnover. As such, construction impacts would be less than those analyzed due to the use of more energy-efficient and cleaner burning construction vehicle fleet mix, pursuant to state regulations that require vehicle fleet operators to phase-in less polluting heavy-duty equipment. As a result, Project-related construction air quality impacts would be lower than the impacts disclosed herein. For emissions modeling purposes, conservatively analyzing the emissions using an earlier construction start date (i.e., November 2025), provides for a worst-case analysis and full disclosure of potential air quality impacts, as required by CEQA.

Table 3 shows that construction pollutant emissions would remain below their respective thresholds with implementation of SCAQMD Rule 403 (required for all projects). The Project would also be required to comply with SCAQMD Rules 402 and 1113, which prohibit nuisances and limit VOC content in paints, respectively. Due to limitations in the CalEEMod program SCAQMD Rule 403 emission reductions are listed under mitigation in the Appendix A model output files, however because these measures are required, they are not considered mitigation under CEQA. As shown above, all criteria pollutant emissions would be below their respective thresholds and impacts would be less than significant.

Operational Emissions

The Project proposes to consolidate two truck trailer storage sites into one location. The Project would also use an existing 5,800 square-foot building for maintenance activities. As noted in the traffic memo, the Project would not generate a net increase in traffic, as a result the operational emissions do not include emissions from mobile sources. In addition, operational emissions do not include emissions associated with the existing 5,800 square-foot building as these emissions are not new. Operational emissions for the Project are associated with parking lot area sources (such as the use of landscape maintenance equipment, consumer products, and architectural coatings).

Table 4: Project Operational Emissions summarizes the operational emissions attributable to the Project. As shown in **Table 4**, the Project's emissions would not exceed SCAQMD thresholds. Therefore, regional operational emissions would result in a less than significant long-term regional air quality impact.

Table 4: Project Operational Emissions						
Source	Emissions (pounds per day)¹					
	ROG	NO_x	CO	SO₂	PM₁₀	PM_{2.5}
Mobile	0.00	0.00	0.00	0.00	0.00	0.00
Area	0.02	0.00	0.00	0.00	0.00	0.00
Energy	0.00	0.00	0.00	0.00	0.00	0.00
Total	0.02	0.00	0.00	0.00	0.00	0.00
<i>SCAQMD Threshold</i>	<i>55</i>	<i>55</i>	<i>550</i>	<i>150</i>	<i>150</i>	<i>55</i>
Threshold Exceeded?	No	No	No	No	No	No
Source: CalEEMod version 2022. Refer to Appendix A for model outputs.						

Mitigation Measures: No mitigation is required.

Level of Significance: Less than significant impact.

Threshold (c) Expose sensitive receptors to substantial pollutant concentrations.

The State CEQA Guidelines indicate that a potentially significant impact could occur if a project would expose sensitive receptors to substantial pollutant concentrations. To identify impacts to sensitive receptors, the SCAQMD recommends addressing LSTs for construction and operations. LSTs were developed in response to SCAQMD Governing Boards' Environmental Justice Enhancement Initiative (I-4). The SCAQMD provided the *Final Localized Significance Threshold Methodology* (dated June 2003 [revised 2008]) for guidance. The LST methodology assists lead agencies in analyzing localized impacts associated with Project-specific emissions.

Localized Construction Impacts

The nearest sensitive receptors to the Project site are residential uses located approximately 1,400 feet (427 meters) to the northeast on South Date Avenue. To identify impacts to sensitive receptors, the SCAQMD recommends addressing Localized Significance Thresholds (LSTs) for construction. LSTs were developed in response to SCAQMD Governing Boards' Environmental Justice Enhancement Initiative (I-4). The SCAQMD provided the *Final Localized Significance Threshold Methodology* (dated June 2003 [revised 2008]) for guidance. The LST methodology assists lead agencies in analyzing localized impacts associated with project-specific level proposed projects.

Since CalEEMod calculates construction emissions based on the number of equipment hours and the maximum daily soil disturbance activity possible for each piece of equipment, **Table 5: Equipment-Specific Grading Rates** is used to determine the maximum daily disturbed acreage for comparison to LSTs. For this Project, the appropriate source receptor area (SRA) for the localized significance thresholds is the Central San Bernardino Valley (SRA 34) area since this area includes the Project site. LSTs apply to NO_x, CO, PM₁₀, and PM_{2.5}. The SCAQMD produced look-up tables for projects that disturb areas less than or equal to 5 acres in size. Based on the daily equipment modeled in CalEEMod, Project construction is anticipated to disturb approximately 3.5 acres in a single day.

Table 5: Equipment-Specific Grading Rates					
Construction Phase	Equipment Type	Equipment Quantity	Acres Graded per 8-Hour Day	Operating Hours per Day	Acres Graded per Day
Site Preparation	Tractor	4	0.5	8	2
	Graders	0	0.5	8	0
	Dozers	3	0.5	8	1.5
	Scrapers	0	1	8	0
Total Acres Graded per Day					3.5
Source: CalEEMod version 2022.					

The SCAQMD’s methodology indicates that “off-site mobile emissions from the Project should not be included in the emissions compared to LSTs.” Therefore, for purposes of the construction LST analysis, only emissions included in the CalEEMod “on-site” emissions outputs were considered. LST thresholds are provided for distances to sensitive receptors of 25, 50, 100, 200, and 500 meters. As the nearest sensitive uses is located 427 meters from the Project site, the LST values for 472 meters was interpolated from the values associated with the 200-meter and 500-meter distances.

Table 6: Localized Significance of Construction Emissions presents the results of localized emissions during each construction phase. **Table 6** shows that the emissions of these pollutants on the peak day of construction would not result in significant concentrations of pollutants at nearby sensitive receptors. Therefore, significant impacts would not occur concerning LSTs during construction activities.

Table 6: Localized Significance of Construction Emissions				
Source/Activity	Emissions (pounds per day)^{1,2}			
	NO_x	CO	PM₁₀	PM_{2.5}
Demolition (2025)	22.20	19.92	3.16	1.18
Site Preparation (2025)	31.64	30.18	9.03	5.20
Grading (2025)	16.27	17.91	3.48	2.00
Grading (2026)	14.97	17.44	3.41	1.93
Building Construction (2026)	9.85	19.97	0.38	0.35
Paving (2026)	6.23	8.81	0.26	0.24
Architectural Coating (2026)	0.86	1.13	0.02	0.02
<i>Maximum Daily Emissions</i>	<i>31.64</i>	<i>30.18</i>	<i>9.03</i>	<i>5.20</i>
<i>SCAQMD Localized Significance Threshold (3.5 acres at 427 meters)</i>	658	21,099	187	92
Threshold Exceeded?	No	No	No	No
NO _x = Nitrogen Oxides; CO = Carbon Monoxide; PM ₁₀ = Particulate Matter 10 microns in diameter or less; PM _{2.5} = Particulate Matter 2.5 microns in diameter or less				
1. CalEEMod version 2022. Worst-case seasonal maximum daily emissions are reported.				
2. SCAQMD Rule 403 Fugitive Dust applied for construction emissions. The Rule 403 reduction/credits include the following: properly maintain mobile and other construction equipment; replace ground cover in disturbed areas quickly; water exposed surfaces three times daily; water all haul roads twice daily; and limit speeds on unpaved roads to 15 miles per hour. Reductions percentages from the SCAQMD CEQA Handbook (Tables XI-A through XI-E) were applied. No mitigation was applied to construction equipment.				
Source: CalEEMod version 2022. Refer to Appendix A for model outputs.				

Localized Operational Impacts

According to the SCAQMD localized significance threshold methodology, LSTs apply to on-site sources of NO_x, CO, PM₁₀, and PM_{2.5}. As shown in **Table 4**, Project operations would only

generate ROG which is not included in the LST analysis. Therefore, the Project would not result in an operational LST impact.

Carbon Monoxide Hotspots

An analysis of CO “hot spots” is needed to determine whether the change in the level of service (LOS) of an intersection resulting from the Project would have the potential to result in exceedances of the CAAQS or NAAQS. It has long been recognized that CO exceedances are caused by vehicular emissions, primarily when vehicles are idling at intersections. Vehicle emissions standards have become increasingly stringent in the last 30 years. Currently, the CO standard in California is a maximum of 3.4 grams per mile for passenger cars (requirements for certain vehicles are more stringent). With the turnover of older vehicles, introduction of cleaner fuels, and implementation of control technology on industrial facilities, CO concentrations have steadily declined. Accordingly, with the steadily decreasing CO emissions from vehicles, even very busy intersections do not result in exceedances of the CO standard.

The Basin was re-designated as attainment in 2007 and is no longer addressed in the SCAQMD’s AQMP. The 2003 AQMP is the most recent version that addresses CO concentrations. As part of the SCAQMD *CO Hotspot Analysis*, the Wilshire Boulevard and Veteran Avenue intersection, one of the most congested intersections in Southern California with an average daily traffic (ADT) volume of approximately 100,000 vehicles per day, was modeled for CO concentrations. This modeling effort identified a CO concentration high of 4.6 ppm, which is well below the 35-ppm federal standard.

As noted previously, the Project would not generate a net increase in traffic. As a result, the Project would not generate a new CO hot spot.

Mitigation Measures: No mitigation is required.

Level of Significance: Less than significant impact.

Threshold (d) Create objectionable odors affecting a substantial number of people.

Construction

Odors that could be generated by construction activities are required to follow SCAQMD Rule 402 to prevent odor nuisances on sensitive land uses. SCAQMD Rule 402, Nuisance, states:

A person shall not discharge from any source whatsoever such quantities of air contaminants or other material which cause injury, detriment, nuisance, or annoyance to any considerable number of persons or to the public, or which endanger the comfort, repose, health, or safety of any such persons or the public, or which cause, or have a natural tendency to cause, injury or damage to business or property.

During construction, emissions from construction equipment, such as diesel exhaust, and volatile organic compounds from architectural coatings and paving activities may generate odors. However, these odors would be temporary, are not expected to affect a substantial number of people, and would disperse rapidly. Therefore, impacts related to odors associated with the Project's construction-related activities would be less than significant.

Operations

The SCAQMD *CEQA Air Quality Handbook* identifies certain land uses as sources of odors. These land uses include agriculture (farming and livestock), wastewater treatment plants, food processing plants, chemical plants, composting facilities, refineries, landfills, dairies, and fiberglass molding. The Project would not include any of the land uses that have been identified by the SCAQMD as odor sources. Therefore, the Project operations would not create objectionable odors.

Mitigation Measures: No mitigation is required.

Level of Significance: Less than significant impact.

Greenhouse Gas Emission Background

Global climate change refers to changes in average climatic conditions on Earth as a whole, including temperature, wind patterns and precipitation. Global temperatures are moderated by naturally occurring atmospheric gases, including water vapor, carbon dioxide (CO₂), methane (CH₄), and nitrous oxide (N₂O), as well as hydrofluorocarbons (HFCs), perfluorocarbons (PFCs), and sulfur hexafluoride (SF₆). These "greenhouse" gases (GHGs) allow solar radiation (sunlight) into the Earth's atmosphere but prevent radiative heat from escaping, thus warming the Earth's atmosphere. GHGs are emitted by both natural processes and human activities. Concentrations of GHG have increased in the atmosphere since the industrial revolution. Human activities that generate GHG emissions include combustion of fossil fuels (CO₂ and N₂O); natural gas generated from landfills, fermentation of manure and cattle farming (CH₄); and industrial processes such as nylon and nitric acid production (N₂O).

GHGs have varying global warming potential (GWP). The GWP is the potential of a gas or aerosol to trap heat in the atmosphere; it is the "cumulative radiative forcing effect of a gas over a specified time horizon resulting from the emission of a unit mass of gas relative to a reference gas." The reference gas for GWP is CO₂; therefore, CO₂ has a GWP factor of 1. The other main GHGs that have been attributed to human activity include CH₄, which has a GWP factor of 28, and N₂O, which has a GWP factor of 298. When accounting for GHGs, all types of GHG emissions

are expressed in terms of CO₂ equivalents (CO₂e)³ and are typically quantified in metric tons (MT) or million metric tons (MMT).

The City of Rialto has not adopted a numerical threshold for determining the significance of GHG emissions; however, the City has discretion to select an appropriate significance criterion used by other agencies, based on substantial evidence. Specifically, the City has selected the 3,000 MTCO₂e per year interim threshold recommended by SCAQMD staff for residential and commercial sector projects against which to compare Project-related GHG emissions. The City has selected this value as a significance criterion which has been supported by substantial evidence.

The 3,000 MTCO₂e per year threshold is based on a 90 percent emission “capture” rate methodology. Prior to its use by the SCAQMD, the 90 percent emissions capture approach was one of the options evaluated by the California Air Pollution Control Officers Association (CAPCOA), in their *CEQA & Climate Change* white paper, to reduce emission levels by 80 percent below 1990 levels by 2050. A GHG significance threshold based on a 90 percent emission capture rate is appropriate to address the long-term adverse impacts associated with global climate change because medium and large projects will be required to implement measures to reduce GHG emissions, while small projects, which are generally infill development projects that are not the focus of the State’s GHG reduction targets, are allowed to proceed.

The City understands that the 3,000 MTCO₂e per year threshold for residential/commercial uses was proposed by SCAQMD over a decade ago and was adopted as an interim policy; however, no permanent, superseding policy or threshold has since been adopted. The 3,000 MTCO₂e per year threshold was developed and recommended by SCAQMD, an expert agency, based on substantial evidence as provided in the Draft Guidance Document – Interim CEQA Greenhouse Gas Significance Threshold document⁴ and subsequent Working Group meetings 1 through 15.⁵ SCAQMD has not withdrawn its support of the interim threshold and all documentation supporting the interim threshold remains on the SCAQMD website on a page that provides guidance to CEQA practitioners for air quality analysis. Further, as stated by SCAQMD, this threshold “uses the Executive Order S-3-05 goal [80 percent below 1990 levels by 2050] as the basis for deriving the screening level.” Lastly, this threshold has been used for hundreds, if not thousands of GHG analyses performed for projects located within the SCAQMD

³ Carbon dioxide equivalent (CO₂e) means the number of metric tons of CO₂ emissions with the same global warming potential as one metric ton of another GHG.

⁴ SCAQMD. *Draft Guidance Document – Interim CEQA Greenhouse Gas Significance Threshold* (page 3-13) [https://www.aqmd.gov/docs/default-source/ceqa/handbook/greenhouse-gases-\(ghg\)-ceqa-significance-thresholds/ghgattachmente.pdf](https://www.aqmd.gov/docs/default-source/ceqa/handbook/greenhouse-gases-(ghg)-ceqa-significance-thresholds/ghgattachmente.pdf)

⁵ SCAQMD. GHG CEQA Significance Thresholds. <https://www.aqmd.gov/home/rules-compliance/ceqa/air-quality-analysis-handbook/ghg-significance-thresholds>

jurisdiction. Thus, if Project-related GHG emissions do not exceed the 3,000 MTCO₂e per year threshold, then Project-related GHG emissions would have a less-than-significant impact.

Greenhouse Gas Impacts

The Project would include direct and indirect GHG emissions from construction and operations. Construction is considered a direct source since these emissions occur at the site. Direct operational-related GHG emissions for the proposed Project would include emissions from area and mobile sources, while indirect emissions are from energy consumption, water demand, and solid waste.

Threshold (a) Generate greenhouse gas emissions, either directly or indirectly, that may have a significant impact on the environment.

Construction GHG Emissions

Construction of the Project would result in direct GHG emissions from construction equipment, the transport of materials, and construction workers to and from the Project site. Construction GHG emissions are typically summed and amortized over the lifetime of the Project (assumed to be 30 years), then added to the operational emissions. Total GHG emissions generated during all phases of construction were combined and are presented in **Table 7: Construction-Related Greenhouse Gas Emissions**. The CalEEMod outputs are contained within **Appendix A**. As shown in **Table 7**, the Project total construction would result in 138 MTCO₂e (approximately 4.6 MTCO₂e/year when amortized over 30 years).

Table 7: Construction-Related Greenhouse Gas Emissions	
Category	MTCO ₂ e
Total Construction Emissions	138
30-Year Amortized Construction	4.6
Source CalEEMod version 2022. Refer to Appendix A for model outputs.	

Long-Term Operational Greenhouse Gas Emissions

Operational or long-term emissions would occur over the proposed Project's life. Operational GHG emissions would result from indirect sources, such as off-site generation of electrical power, the energy required to convey water to the Project site and wastewater from the Project site. The Project's total operational GHG emissions and net emissions are summarized in **Table 8: Project Greenhouse Gas Emissions**. As shown, the Project would generate approximately 28.9 MTCO₂e/year. The project would not result in an increase in GHG emissions that exceed the

SCAQMD's screening threshold of 3,000 MTCO₂e/yr. Therefore, Project-related GHG emissions would be less than significant.

Table 8: Project Greenhouse Gas Emissions	
Emissions Source	MTCO₂e per Year
Construction Amortized over 30 Years	4.6
Mobile	0.0
Area	0.0
Energy	24.3
Water	0.3
Waste	0.0
Refrigeration	0.0
Total Project Emissions	28.9
SCAQMD Project Threshold	3,000
Threshold Exceeded?	No
Source: CalEEMod version 2022. Refer to Appendix A for model data outputs.	

Table 8 shows that the proposed Project would not exceed the SCAQMD GHG threshold of 3,000 MTCO₂e per year. Project-related GHG emissions would be less than significant, and no mitigation is required.

Mitigation Measures: No mitigation is required.

Level of Significance: Less than significant impact.

Threshold (b) Conflict with an applicable plan, policy, or regulation of an agency adopted for the purpose of reducing GHG emissions?

Consistency with the City of Rialto Climate Adaptation Plan

The Rialto Climate Adaptation Plan outlines goals to reduce energy consumption and GHG emissions to become a more sustainable community. The proposed Project would be required to comply with all building codes in effect at the time of construction which include energy conservation measures mandated by Title 24 of the California Building Standards Code – Energy Efficiency Standards and the California Green Building Standards. Because Title 24 standards require energy conservation features in new construction (e.g., high-efficiency lighting, high-efficiency heating, ventilating, and air-conditioning [HVAC] systems, thermal insulation, double-glazed windows, water-conserving plumbing fixtures), these standards indirectly regulate and reduce GHG emissions. California's Building Energy Efficiency Standards are updated on an approximately three-year cycle. The most recent 2022 standards went into effect January 1, 2023.

Further, the Project would comply with the City's General Plan policies and State Building Code provisions designed to reduce GHG emissions. The proposed Project would also comply with all SCAQMD applicable rules and regulations during construction and operation and would not interfere with the State's AB 32 goals.

Consistency with the 2022 CARB Scoping Plan

Adopted December 15, 2022, CARB's 2022 Scoping Plan for Achieving Carbon Neutrality (2022 Scoping Plan) sets a path to achieve targets for carbon neutrality and reduce anthropogenic GHG emissions by 85 percent below 1990 levels by 2045 in accordance with AB 1279. To achieve the targets of AB 1279, the 2022 Scoping Plan relies on existing and emerging fossil fuel alternatives and clean technologies, as well as carbon capture and storage. Specifically, the 2022 Scoping Plan focuses on zero-emission transportation; phasing out use of fossil gas use for heating homes and buildings; reducing chemical and refrigerants with high GWP; providing communities with sustainable options for walking, biking, and public transit; displacement of fossil-fuel fired electrical generation through use of renewable energy alternatives (e.g., solar arrays and wind turbines); and scaling up new options such as green hydrogen. The 2022 Scoping Plan sets one of the most aggressive approaches to reach carbon neutrality in the world. Unlike the 2017 Scoping Plan, CARB no longer includes a numeric per capita threshold and instead advocates for compliance with a local GHG reduction strategy (i.e., Climate Action Plan) consistent with CEQA Guidelines section 15183.5.

The key elements of the 2022 CARB Scoping Plan focus on transportation. Specifically, the 2022 Scoping Plan aims to rapidly move towards zero-emission (ZE) transportation (i.e., electrifying cars, buses, trains, and trucks), which constitutes California's single largest source of GHGs. The regulations that impact the transportation sector are adopted and enforced by CARB on vehicle manufacturers and are outside the jurisdiction and control of local governments. The 2022 Scoping Plan accelerates development of new regulations as well as amendments to strengthen regulations and programs already in place. Statewide strategies to reduce GHG emissions in the latest 2022 Scoping Plan include:

- Implementing SB 100 (achieve 100 percent clean electricity by 2045);
- Achieving 100 percent zero emission vehicle sales in 2035 through Advanced Clean Cars II; and
- Implementing the Advanced Clean Fleets regulation to deploy zero-emission vehicle (ZEV) buses and trucks.

Additional transportation policies include the Off-Road Zero-Emission Targeted Manufacturer rule, Clean Off-Road Fleet Recognition Program, In-use Off-Road Diesel-Fueled Fleets Regulation, Clean Off-Road Fleet Recognition Program, and Amendments to the In-use Off-Road Diesel-Fueled Fleets Regulation. The 2022 Scoping Plan would continue to implement SB 375.

GHGs would be further reduced through the Cap-and-Trade Program carbon pricing and SB 905. SB 905 requires CARB to create the Carbon Capture, Removal, Utilization, and Storage Program to evaluate, demonstrate, and regulate carbon dioxide removal projects and technology.

The Project would not impede the State's progress towards carbon neutrality by 2045 under the 2022 Scoping Plan. The Project would be required to comply with applicable current and future regulatory requirements promulgated through the 2022 Scoping Plan.

SCAG RTP/SCS Consistency

On April 4, 2024, the Southern California Association of Governments (SCAG) Regional Council adopted Connect SoCal (2024-2050 Regional Transportation Plan/ Sustainable Communities Strategy [RTP/SCS]). The RTP/SCS is a long-range visioning plan that balances future mobility and housing needs with economic, environmental, and public health goals. The RTP/SCS embodies a collective vision for the region's future and is developed with input from local governments, county transportation commissions, tribal governments, nonprofit organizations, businesses, and local stakeholders in the counties of Imperial, Los Angeles, Orange, Riverside, San Bernardino, and Ventura. Under Senate Bill (SB) 375, SCAG's 2024 RTP/SCS establishes GHG emissions goals to reduce GHG emissions in the region by eight percent from 2005 levels by 2020 and by 2035. SCAG's 2020 RTP/SCS establishes GHG emissions goals for automobiles and light-duty trucks for 2020 and 2035 as well as an overall GHG target for the Project region consistent with both the target date of AB 32 and the post-2020 GHG reduction goals of Executive Orders 5-03-05 and B-30-15.

The RTP/SCS contains over 4,000 transportation Projects, ranging from highway improvements, railroad grade separations, bicycle lanes, new transit hubs and replacement bridges. These future investments were included in county plans developed by the six county transportation commissions and seek to reduce traffic bottlenecks, improve the efficiency of the region's network, and expand mobility choices for everyone. The RTP/SCS is an important planning document for the region, allowing Project sponsors to qualify for federal funding.

The plan accounts for operations and maintenance costs to ensure reliability, longevity, and cost effectiveness. The RTP/SCS is also supported by a combination of transportation and land use strategies that help the region achieve state GHG emissions reduction goals and Federal Clean Air Act (FCAA) requirements, preserve open space areas, improve public health and roadway safety, support our vital goods movement industry, and utilize resources more efficiently. GHG emissions resulting from development-related mobile sources are the most potent source of emissions, and therefore Project comparison to the RTP/SCS is an appropriate indicator of whether the Project would inhibit the post-2020 GHG reduction goals promulgated by the State. The Project's consistency with the RTP/SCS goals is analyzed in detail in **Table 9: Regional Transportation Plan/Sustainable Communities Strategy Consistency**.

Table 9: Regional Transportation Plan/Sustainable Communities Strategy Consistency			
SCAG Goals		Compliance	
GOAL 1:	Encourage regional economic prosperity and global competitiveness.	N/A:	This is not a Project-specific policy. Therefore Goal 1 is not applicable.
GOAL 2:	Improve mobility, accessibility, reliability, and travel safety for people and goods.	N/A:	The Project is not a transportation improvement Project; therefore Goal 2 is not applicable.
GOAL 3:	Enhance the preservation, security, and resilience of the regional transportation system.	N/A:	As the proposed Project is not a transportation improvement Project, Goal 3 is not applicable.
GOAL 4:	Increase person and goods movement and travel choices within the transportation system.	N/A:	As the proposed Project is not a transportation improvement Project, Goal 4 is not applicable. However, the Project includes a use that would support goods movement.
GOAL 5:	Reduce greenhouse gas emissions and improve air quality.	Consistent:	The Project is located within an urban area in proximity to existing truck routes and freeways. Location of the Project within a developed area would reduce trip lengths, which would reduce GHG and air quality emissions.
GOAL 6:	Support healthy and equitable communities.	Consistent:	The Project does not exceed regional or localized thresholds for criteria pollutants. Based on the Friant Ranch decision, projects that do not exceed the SCAQMD's LSTs would not violate any air quality standards or contribute substantially to an existing or projected air quality violation and result in no criteria pollutant health impacts.
GOAL 7:	Adapt to a changing climate and support an integrated regional development pattern and transportation network.	N/A:	This is not a Project-specific policy. Therefore Goal 7 is not applicable.
GOAL 8:	Leverage new transportation technologies and data-driven solutions that result in more efficient travel.	N/A:	As the proposed Project is not a transportation improvement Project, Goal 8 is not applicable.
GOAL 9:	Encourage development of diverse housing types in areas that are supported by multiple transportation options.	N/A:	As the proposed Project is not a housing development Project, Goal 9 is not applicable.

Table 9: Regional Transportation Plan/Sustainable Communities Strategy Consistency	
SCAG Goals	Compliance
GOAL 10: Promote conservation of natural and agricultural lands and restoration of habitats.	N/A: The Project is not located on agricultural lands. Therefore Goal 10 is not applicable.
Source: Southern California Association of Governments, <i>Connect SoCal (2020 - 2045 Regional Transportation Plan/Sustainable Communities Strategy</i> , 2020.	

Compliance with applicable State standards would ensure consistency with State and regional GHG reduction planning efforts. The goals stated in the RTP/SCS were used to determine consistency with the planning existing efforts. As shown in **Table 9**, the proposed Project would be consistent with the stated goals of the RTP/SCS. Therefore, the proposed Project would not result in any significant impacts or interfere with SCAG's ability to achieve the region's post-2020 mobile source GHG reduction targets.

Conclusion

The proposed Project would be consistent with the Rialto Climate Adaptation Plan, the CARB Scoping Plan, and SCAG's RTP/SCS, and would be required to comply with existing regulations, including applicable measures from the City's General Plan. The Project does not conflict with the applicable plans that are discussed above and therefore, with respect to this particular threshold, the Project does not have a significant impact.

Mitigation Measures: No mitigation is required.

Level of Significance: Less than significant impact.

Appendix A

Air Quality and GHG Data

Rialto – Willow Ave Truck Parking CalEEMod Assumptions

Land Use

Land Use	Size	Metric
Parking Lot	4.04	Acre

Construction

Schedule

Phase Name	Start Date	End Date	Workdays
Demolition	11/3/2025	12/1/2025	20
Site Preparation	12/2/2025	12/9/2025	5
Grading	12/10/2025	1/15/2026	27
Building Construction	1/16/2026	3/2/2026	32
Paving	4/2/2026	4/30/2026	21
Architectural Coating	3/3/2026	4/1/2026	22

Equipment

Construction Phase	Equipment	Number per Day	Hours Per Day
Demolition	Excavators	3	6
	Rubber Tired Dozers	2	8
	Concrete/Industrial Saws	1	8
Site Preparation	Rubber Tired Dozers	3	8
	Tractors/Loaders/Backhoes	4	8
Grading	Excavators	1	8
	Graders	1	8
	Rubber Tired Dozers	1	8
	Tractors/Loaders/Backhoes	3	8
Building Construction	Cranes	1	7
	Forklifts	3	8
	Generator Set	1	8
	Tractors/Loaders/Backhoes	3	7
	Welders	1	8
Paving	Cement and Mortar Mixers	2	6
	Pavers	1	8
	Paving Equipment	2	6
	Rollers	2	6
	Tractors/Loaders/Backhoes	1	8
Architectural Coating	Air Compressors	1	6

Demolition

Phase	Amount (Tons)
Demolition	2,100
Tons = Tons of Debris	

Operations

Vehicle Data

Land Use	Size	Metric	Trip Rate	Daily Trip Generation
Parking Lot	4.04	Acres	0	0
According to Traffic Memo the project is not expected to generate a net increase in traffic, therefore no new trips were modeled in CalEEMod.				

Rialto - Willow Ave Truck Parking Detailed Report

Table of Contents

- 1. Basic Project Information
 - 1.1. Basic Project Information
 - 1.2. Land Use Types
 - 1.3. User-Selected Emission Reduction Measures by Emissions Sector
- 2. Emissions Summary
 - 2.1. Construction Emissions Compared Against Thresholds
 - 2.2. Construction Emissions by Year, Unmitigated
 - 2.3. Construction Emissions by Year, Mitigated
 - 2.4. Operations Emissions Compared Against Thresholds
 - 2.5. Operations Emissions by Sector, Unmitigated
 - 2.6. Operations Emissions by Sector, Mitigated
- 3. Construction Emissions Details
 - 3.1. Demolition (2025) - Unmitigated
 - 3.2. Demolition (2025) - Mitigated
 - 3.3. Site Preparation (2025) - Unmitigated

3.4. Site Preparation (2025) - Mitigated

3.5. Grading (2025) - Unmitigated

3.6. Grading (2025) - Mitigated

3.7. Grading (2026) - Unmitigated

3.8. Grading (2026) - Mitigated

3.9. Building Construction (2026) - Unmitigated

3.10. Building Construction (2026) - Mitigated

3.11. Paving (2026) - Unmitigated

3.12. Paving (2026) - Mitigated

3.13. Architectural Coating (2026) - Unmitigated

3.14. Architectural Coating (2026) - Mitigated

4. Operations Emissions Details

4.1. Mobile Emissions by Land Use

4.1.1. Unmitigated

4.1.2. Mitigated

4.2. Energy

4.2.1. Electricity Emissions By Land Use - Unmitigated

4.2.2. Electricity Emissions By Land Use - Mitigated

4.2.3. Natural Gas Emissions By Land Use - Unmitigated

4.2.4. Natural Gas Emissions By Land Use - Mitigated

4.3. Area Emissions by Source

4.3.1. Unmitigated

4.3.2. Mitigated

4.4. Water Emissions by Land Use

4.4.1. Unmitigated

4.4.2. Mitigated

4.5. Waste Emissions by Land Use

4.5.1. Unmitigated

4.5.2. Mitigated

4.6. Refrigerant Emissions by Land Use

4.6.1. Unmitigated

4.6.2. Mitigated

4.7. Offroad Emissions By Equipment Type

4.7.1. Unmitigated

4.7.2. Mitigated

4.8. Stationary Emissions By Equipment Type

4.8.1. Unmitigated

4.8.2. Mitigated

4.9. User Defined Emissions By Equipment Type

4.9.1. Unmitigated

4.9.2. Mitigated

4.10. Soil Carbon Accumulation By Vegetation Type

4.10.1. Soil Carbon Accumulation By Vegetation Type - Unmitigated

4.10.2. Above and Belowground Carbon Accumulation by Land Use Type - Unmitigated

4.10.3. Avoided and Sequestered Emissions by Species - Unmitigated

4.10.4. Soil Carbon Accumulation By Vegetation Type - Mitigated

4.10.5. Above and Belowground Carbon Accumulation by Land Use Type - Mitigated

4.10.6. Avoided and Sequestered Emissions by Species - Mitigated

5. Activity Data

5.1. Construction Schedule

5.2. Off-Road Equipment

5.2.1. Unmitigated

5.2.2. Mitigated

5.3. Construction Vehicles

5.3.1. Unmitigated

5.3.2. Mitigated

5.4. Vehicles

5.4.1. Construction Vehicle Control Strategies

5.5. Architectural Coatings

5.6. Dust Mitigation

5.6.1. Construction Earthmoving Activities

5.6.2. Construction Earthmoving Control Strategies

5.7. Construction Paving

5.8. Construction Electricity Consumption and Emissions Factors

5.9. Operational Mobile Sources

5.9.1. Unmitigated

5.9.2. Mitigated

5.10. Operational Area Sources

5.10.1. Hearths

5.10.1.1. Unmitigated

5.10.1.2. Mitigated

5.10.2. Architectural Coatings

5.10.3. Landscape Equipment

5.10.4. Landscape Equipment - Mitigated

5.11. Operational Energy Consumption

5.11.1. Unmitigated

5.11.2. Mitigated

5.12. Operational Water and Wastewater Consumption

5.12.1. Unmitigated

5.12.2. Mitigated

5.13. Operational Waste Generation

5.13.1. Unmitigated

5.13.2. Mitigated

5.14. Operational Refrigeration and Air Conditioning Equipment

5.14.1. Unmitigated

5.14.2. Mitigated

5.15. Operational Off-Road Equipment

5.15.1. Unmitigated

5.15.2. Mitigated

5.16. Stationary Sources

5.16.1. Emergency Generators and Fire Pumps

5.16.2. Process Boilers

5.17. User Defined

5.18. Vegetation

5.18.1. Land Use Change

5.18.1.1. Unmitigated

5.18.1.2. Mitigated

5.18.1. Biomass Cover Type

5.18.1.1. Unmitigated

5.18.1.2. Mitigated

5.18.2. Sequestration

5.18.2.1. Unmitigated

5.18.2.2. Mitigated

6. Climate Risk Detailed Report

6.1. Climate Risk Summary

6.2. Initial Climate Risk Scores

6.3. Adjusted Climate Risk Scores

6.4. Climate Risk Reduction Measures

7. Health and Equity Details

7.1. CalEnviroScreen 4.0 Scores

7.2. Healthy Places Index Scores

7.3. Overall Health & Equity Scores

7.4. Health & Equity Measures

7.5. Evaluation Scorecard

7.6. Health & Equity Custom Measures

8. User Changes to Default Data

1. Basic Project Information

1.1. Basic Project Information

Data Field	Value
Project Name	Rialto - Willow Ave Truck Parking
Construction Start Date	11/3/2025
Operational Year	2026
Lead Agency	—
Land Use Scale	Project/site
Analysis Level for Defaults	County
Windspeed (m/s)	2.20
Precipitation (days)	14.2
Location	34.06174456340668, -117.37384280754998
County	San Bernardino-South Coast
City	Rialto
Air District	South Coast AQMD
Air Basin	South Coast
TAZ	5341
EDFZ	10
Electric Utility	Southern California Edison
Gas Utility	Southern California Gas
App Version	2022.1.1.29

1.2. Land Use Types

Land Use Subtype	Size	Unit	Lot Acreage	Building Area (sq ft)	Landscape Area (sq ft)	Special Landscape Area (sq ft)	Population	Description
Parking Lot	4.04	Acre	4.04	0.00	22,258	0.00	—	—

1.3. User-Selected Emission Reduction Measures by Emissions Sector

Sector	#	Measure Title
Construction	C-10-A	Water Exposed Surfaces
Construction	C-11	Limit Vehicle Speeds on Unpaved Roads

2. Emissions Summary

2.1. Construction Emissions Compared Against Thresholds

Criteria Pollutants (lb/day for daily, ton/yr for annual) and GHGs (lb/day for daily, MT/yr for annual)

Un/Mit.	ROG	NOx	CO	SO2	PM10E	PM10D	PM10T	PM2.5E	PM2.5D	PM2.5T	BCO2	NBCO2	CO2T	CH4	N2O	R	CO2e
Daily, Summer (Max)	—	—	—	—	—	—	—	—	—	—	—	—	—	—	—	—	—
Unmit.	1.27	6.31	10.3	0.01	0.26	0.26	0.52	0.24	0.06	0.30	—	1,626	1,626	0.07	0.02	0.94	1,635
Mit.	1.27	6.31	10.3	0.01	0.26	0.26	0.52	0.24	0.06	0.30	—	1,626	1,626	0.07	0.02	0.94	1,635
% Reduced	—	—	—	—	—	—	—	—	—	—	—	—	—	—	—	—	—
Daily, Winter (Max)	—	—	—	—	—	—	—	—	—	—	—	—	—	—	—	—	—
Unmit.	3.39	31.7	31.2	0.05	1.37	19.9	21.3	1.26	10.2	11.4	—	5,521	5,521	0.23	0.09	0.04	5,542
Mit.	3.39	31.7	31.2	0.05	1.37	7.89	9.26	1.26	3.99	5.25	—	5,521	5,521	0.23	0.09	0.04	5,542
% Reduced	—	—	—	—	—	60%	56%	—	61%	54%	—	—	—	—	—	—	—
Average Daily (Max)	—	—	—	—	—	—	—	—	—	—	—	—	—	—	—	—	—
Unmit.	0.29	2.40	2.41	< 0.005	0.10	0.72	0.82	0.09	0.31	0.40	—	427	427	0.02	0.01	0.05	430
Mit.	0.29	2.40	2.41	< 0.005	0.10	0.37	0.47	0.09	0.14	0.23	—	427	427	0.02	0.01	0.05	430
% Reduced	—	—	—	—	—	48%	43%	—	56%	43%	—	—	—	—	—	—	—

Annual (Max)	—	—	—	—	—	—	—	—	—	—	—	—	—	—	—	—	—
Unmit.	0.05	0.44	0.44	< 0.005	0.02	0.13	0.15	0.02	0.06	0.07	—	70.7	70.7	< 0.005	< 0.005	0.01	71.1
Mit.	0.05	0.44	0.44	< 0.005	0.02	0.07	0.09	0.02	0.02	0.04	—	70.7	70.7	< 0.005	< 0.005	0.01	71.1
% Reduced	—	—	—	—	—	48%	43%	—	56%	43%	—	—	—	—	—	—	—
Exceeds (Daily Max)	—	—	—	—	—	—	—	—	—	—	—	—	—	—	—	—	—
Threshold	75.0	100	550	150	—	—	150	—	—	55.0	—	—	—	—	—	—	—
Unmit.	No	No	No	No	—	—	No	—	—	No	—	—	—	—	—	—	—
Mit.	No	No	No	No	—	—	No	—	—	No	—	—	—	—	—	—	—
Exceeds (Average Daily)	—	—	—	—	—	—	—	—	—	—	—	—	—	—	—	—	—
Threshold	75.0	100	550	150	—	—	150	—	—	55.0	—	—	—	—	—	—	—
Unmit.	No	No	No	No	—	—	No	—	—	No	—	—	—	—	—	—	—
Mit.	No	No	No	No	—	—	No	—	—	No	—	—	—	—	—	—	—

2.2. Construction Emissions by Year, Unmitigated

Criteria Pollutants (lb/day for daily, ton/yr for annual) and GHGs (lb/day for daily, MT/yr for annual)

Year	ROG	NOx	CO	SO2	PM10E	PM10D	PM10T	PM2.5E	PM2.5D	PM2.5T	BCO2	NBCO2	CO2T	CH4	N2O	R	CO2e
Daily - Summer (Max)	—	—	—	—	—	—	—	—	—	—	—	—	—	—	—	—	—
2026	1.27	6.31	10.3	0.01	0.26	0.26	0.52	0.24	0.06	0.30	—	1,626	1,626	0.07	0.02	0.94	1,635
Daily - Winter (Max)	—	—	—	—	—	—	—	—	—	—	—	—	—	—	—	—	—
2025	3.39	31.7	31.2	0.05	1.37	19.9	21.3	1.26	10.2	11.4	—	5,521	5,521	0.23	0.09	0.04	5,542

2026	1.71	15.0	18.3	0.03	0.65	7.28	7.92	0.59	3.47	4.07	—	3,150	3,150	0.12	0.03	0.02	3,162
Average Daily	—	—	—	—	—	—	—	—	—	—	—	—	—	—	—	—	—
2025	0.26	2.40	2.41	< 0.005	0.10	0.72	0.82	0.09	0.31	0.40	—	427	427	0.02	0.01	0.05	430
2026	0.29	1.72	2.32	< 0.005	0.07	0.23	0.30	0.06	0.11	0.17	—	403	403	0.02	< 0.005	0.03	405
Annual	—	—	—	—	—	—	—	—	—	—	—	—	—	—	—	—	—
2025	0.05	0.44	0.44	< 0.005	0.02	0.13	0.15	0.02	0.06	0.07	—	70.7	70.7	< 0.005	< 0.005	0.01	71.1
2026	0.05	0.31	0.42	< 0.005	0.01	0.04	0.05	0.01	0.02	0.03	—	66.8	66.8	< 0.005	< 0.005	0.01	67.0

2.3. Construction Emissions by Year, Mitigated

Criteria Pollutants (lb/day for daily, ton/yr for annual) and GHGs (lb/day for daily, MT/yr for annual)

Year	ROG	NOx	CO	SO2	PM10E	PM10D	PM10T	PM2.5E	PM2.5D	PM2.5T	BCO2	NBCO2	CO2T	CH4	N2O	R	CO2e
Daily - Summer (Max)	—	—	—	—	—	—	—	—	—	—	—	—	—	—	—	—	—
2026	1.27	6.31	10.3	0.01	0.26	0.26	0.52	0.24	0.06	0.30	—	1,626	1,626	0.07	0.02	0.94	1,635
Daily - Winter (Max)	—	—	—	—	—	—	—	—	—	—	—	—	—	—	—	—	—
2025	3.39	31.7	31.2	0.05	1.37	7.89	9.26	1.26	3.99	5.25	—	5,521	5,521	0.23	0.09	0.04	5,542
2026	1.71	15.0	18.3	0.03	0.65	2.96	3.60	0.59	1.38	1.98	—	3,150	3,150	0.12	0.03	0.02	3,162
Average Daily	—	—	—	—	—	—	—	—	—	—	—	—	—	—	—	—	—
2025	0.26	2.40	2.41	< 0.005	0.10	0.37	0.47	0.09	0.14	0.23	—	427	427	0.02	0.01	0.05	430
2026	0.29	1.72	2.32	< 0.005	0.07	0.10	0.17	0.06	0.04	0.11	—	403	403	0.02	< 0.005	0.03	405
Annual	—	—	—	—	—	—	—	—	—	—	—	—	—	—	—	—	—
2025	0.05	0.44	0.44	< 0.005	0.02	0.07	0.09	0.02	0.02	0.04	—	70.7	70.7	< 0.005	< 0.005	0.01	71.1
2026	0.05	0.31	0.42	< 0.005	0.01	0.02	0.03	0.01	0.01	0.02	—	66.8	66.8	< 0.005	< 0.005	0.01	67.0

2.4. Operations Emissions Compared Against Thresholds

Criteria Pollutants (lb/day for daily, ton/yr for annual) and GHGs (lb/day for daily, MT/yr for annual)

Un/Mit.	ROG	NOx	CO	SO2	PM10E	PM10D	PM10T	PM2.5E	PM2.5D	PM2.5T	BCO2	NBCO2	CO2T	CH4	N2O	R	CO2e
Daily, Summer (Max)	—	—	—	—	—	—	—	—	—	—	—	—	—	—	—	—	—
Unmit.	0.02	0.00	0.00	0.00	0.00	0.00	0.00	0.00	0.00	0.00	0.00	148	148	0.01	< 0.005	0.00	149
Daily, Winter (Max)	—	—	—	—	—	—	—	—	—	—	—	—	—	—	—	—	—
Unmit.	0.02	0.00	0.00	0.00	0.00	0.00	0.00	0.00	0.00	0.00	0.00	148	148	0.01	< 0.005	0.00	149
Average Daily (Max)	—	—	—	—	—	—	—	—	—	—	—	—	—	—	—	—	—
Unmit.	0.02	0.00	0.00	0.00	0.00	0.00	0.00	0.00	0.00	0.00	0.00	148	148	0.01	< 0.005	0.00	149
Annual (Max)	—	—	—	—	—	—	—	—	—	—	—	—	—	—	—	—	—
Unmit.	< 0.005	0.00	0.00	0.00	0.00	0.00	0.00	0.00	0.00	0.00	0.00	24.5	24.5	< 0.005	< 0.005	0.00	24.6
Exceeds (Daily Max)	—	—	—	—	—	—	—	—	—	—	—	—	—	—	—	—	—
Threshold	55.0	55.0	550	150	—	—	150	—	—	55.0	—	—	—	—	—	—	—
Unmit.	No	No	No	No	—	—	No	—	—	No	—	—	—	—	—	—	—
Exceeds (Average Daily)	—	—	—	—	—	—	—	—	—	—	—	—	—	—	—	—	—
Threshold	55.0	55.0	550	150	—	—	150	—	—	55.0	—	—	—	—	—	—	—
Unmit.	No	No	No	No	—	—	No	—	—	No	—	—	—	—	—	—	—

2.5. Operations Emissions by Sector, Unmitigated

Criteria Pollutants (lb/day for daily, ton/yr for annual) and GHGs (lb/day for daily, MT/yr for annual)

Sector	ROG	NOx	CO	SO2	PM10E	PM10D	PM10T	PM2.5E	PM2.5D	PM2.5T	BCO2	NBCO2	CO2T	CH4	N2O	R	CO2e
--------	-----	-----	----	-----	-------	-------	-------	--------	--------	--------	------	-------	------	-----	-----	---	------

Daily, Summer (Max)	—	—	—	—	—	—	—	—	—	—	—	—	—	—	—	—	—
Mobile	0.00	0.00	0.00	0.00	0.00	0.00	0.00	0.00	0.00	0.00	—	0.00	0.00	0.00	0.00	0.00	0.00
Area	0.02	0.00	0.00	0.00	0.00	—	0.00	0.00	—	0.00	—	0.00	0.00	0.00	0.00	—	0.00
Energy	0.00	0.00	0.00	0.00	0.00	—	0.00	0.00	—	0.00	—	146	146	0.01	< 0.005	—	147
Water	—	—	—	—	—	—	—	—	—	—	0.00	1.80	1.80	< 0.005	< 0.005	—	1.81
Waste	—	—	—	—	—	—	—	—	—	—	0.00	0.00	0.00	0.00	0.00	—	0.00
Total	0.02	0.00	0.00	0.00	0.00	0.00	0.00	0.00	0.00	0.00	0.00	148	148	0.01	< 0.005	0.00	149
Daily, Winter (Max)	—	—	—	—	—	—	—	—	—	—	—	—	—	—	—	—	—
Mobile	0.00	0.00	0.00	0.00	0.00	0.00	0.00	0.00	0.00	0.00	—	0.00	0.00	0.00	0.00	0.00	0.00
Area	0.02	—	—	—	—	—	—	—	—	—	—	—	—	—	—	—	—
Energy	0.00	0.00	0.00	0.00	0.00	—	0.00	0.00	—	0.00	—	146	146	0.01	< 0.005	—	147
Water	—	—	—	—	—	—	—	—	—	—	0.00	1.80	1.80	< 0.005	< 0.005	—	1.81
Waste	—	—	—	—	—	—	—	—	—	—	0.00	0.00	0.00	0.00	0.00	—	0.00
Total	0.02	0.00	0.00	0.00	0.00	0.00	0.00	0.00	0.00	0.00	0.00	148	148	0.01	< 0.005	0.00	149
Average Daily	—	—	—	—	—	—	—	—	—	—	—	—	—	—	—	—	—
Mobile	0.00	0.00	0.00	0.00	0.00	0.00	0.00	0.00	0.00	0.00	—	0.00	0.00	0.00	0.00	0.00	0.00
Area	0.02	0.00	0.00	0.00	0.00	—	0.00	0.00	—	0.00	—	0.00	0.00	0.00	0.00	—	0.00
Energy	0.00	0.00	0.00	0.00	0.00	—	0.00	0.00	—	0.00	—	146	146	0.01	< 0.005	—	147
Water	—	—	—	—	—	—	—	—	—	—	0.00	1.80	1.80	< 0.005	< 0.005	—	1.81
Waste	—	—	—	—	—	—	—	—	—	—	0.00	0.00	0.00	0.00	0.00	—	0.00
Total	0.02	0.00	0.00	0.00	0.00	0.00	0.00	0.00	0.00	0.00	0.00	148	148	0.01	< 0.005	0.00	149
Annual	—	—	—	—	—	—	—	—	—	—	—	—	—	—	—	—	—
Mobile	0.00	0.00	0.00	0.00	0.00	0.00	0.00	0.00	0.00	0.00	—	0.00	0.00	0.00	0.00	0.00	0.00
Area	< 0.005	0.00	0.00	0.00	0.00	—	0.00	0.00	—	0.00	—	0.00	0.00	0.00	0.00	—	0.00
Energy	0.00	0.00	0.00	0.00	0.00	—	0.00	0.00	—	0.00	—	24.2	24.2	< 0.005	< 0.005	—	24.3

Water	—	—	—	—	—	—	—	—	—	—	0.00	0.30	0.30	< 0.005	< 0.005	—	0.30
Waste	—	—	—	—	—	—	—	—	—	—	0.00	0.00	0.00	0.00	0.00	—	0.00
Total	< 0.005	0.00	0.00	0.00	0.00	0.00	0.00	0.00	0.00	0.00	0.00	24.5	24.5	< 0.005	< 0.005	0.00	24.6

2.6. Operations Emissions by Sector, Mitigated

Criteria Pollutants (lb/day for daily, ton/yr for annual) and GHGs (lb/day for daily, MT/yr for annual)

Sector	ROG	NOx	CO	SO2	PM10E	PM10D	PM10T	PM2.5E	PM2.5D	PM2.5T	BCO2	NBCO2	CO2T	CH4	N2O	R	CO2e
Daily, Summer (Max)	—	—	—	—	—	—	—	—	—	—	—	—	—	—	—	—	—
Mobile	0.00	0.00	0.00	0.00	0.00	0.00	0.00	0.00	0.00	0.00	—	0.00	0.00	0.00	0.00	0.00	0.00
Area	0.02	0.00	0.00	0.00	0.00	—	0.00	0.00	—	0.00	—	0.00	0.00	0.00	0.00	—	0.00
Energy	0.00	0.00	0.00	0.00	0.00	—	0.00	0.00	—	0.00	—	146	146	0.01	< 0.005	—	147
Water	—	—	—	—	—	—	—	—	—	—	0.00	1.80	1.80	< 0.005	< 0.005	—	1.81
Waste	—	—	—	—	—	—	—	—	—	—	0.00	0.00	0.00	0.00	0.00	—	0.00
Total	0.02	0.00	0.00	0.00	0.00	0.00	0.00	0.00	0.00	0.00	0.00	148	148	0.01	< 0.005	0.00	149
Daily, Winter (Max)	—	—	—	—	—	—	—	—	—	—	—	—	—	—	—	—	—
Mobile	0.00	0.00	0.00	0.00	0.00	0.00	0.00	0.00	0.00	0.00	—	0.00	0.00	0.00	0.00	0.00	0.00
Area	0.02	—	—	—	—	—	—	—	—	—	—	—	—	—	—	—	—
Energy	0.00	0.00	0.00	0.00	0.00	—	0.00	0.00	—	0.00	—	146	146	0.01	< 0.005	—	147
Water	—	—	—	—	—	—	—	—	—	—	0.00	1.80	1.80	< 0.005	< 0.005	—	1.81
Waste	—	—	—	—	—	—	—	—	—	—	0.00	0.00	0.00	0.00	0.00	—	0.00
Total	0.02	0.00	0.00	0.00	0.00	0.00	0.00	0.00	0.00	0.00	0.00	148	148	0.01	< 0.005	0.00	149
Average Daily	—	—	—	—	—	—	—	—	—	—	—	—	—	—	—	—	—
Mobile	0.00	0.00	0.00	0.00	0.00	0.00	0.00	0.00	0.00	0.00	—	0.00	0.00	0.00	0.00	0.00	0.00
Area	0.02	0.00	0.00	0.00	0.00	—	0.00	0.00	—	0.00	—	0.00	0.00	0.00	0.00	—	0.00
Energy	0.00	0.00	0.00	0.00	0.00	—	0.00	0.00	—	0.00	—	146	146	0.01	< 0.005	—	147

Water	—	—	—	—	—	—	—	—	—	—	0.00	1.80	1.80	< 0.005	< 0.005	—	1.81
Waste	—	—	—	—	—	—	—	—	—	—	0.00	0.00	0.00	0.00	0.00	—	0.00
Total	0.02	0.00	0.00	0.00	0.00	0.00	0.00	0.00	0.00	0.00	0.00	148	148	0.01	< 0.005	0.00	149
Annual	—	—	—	—	—	—	—	—	—	—	—	—	—	—	—	—	—
Mobile	0.00	0.00	0.00	0.00	0.00	0.00	0.00	0.00	0.00	0.00	—	0.00	0.00	0.00	0.00	0.00	0.00
Area	< 0.005	0.00	0.00	0.00	0.00	—	0.00	0.00	—	0.00	—	0.00	0.00	0.00	0.00	—	0.00
Energy	0.00	0.00	0.00	0.00	0.00	—	0.00	0.00	—	0.00	—	24.2	24.2	< 0.005	< 0.005	—	24.3
Water	—	—	—	—	—	—	—	—	—	—	0.00	0.30	0.30	< 0.005	< 0.005	—	0.30
Waste	—	—	—	—	—	—	—	—	—	—	0.00	0.00	0.00	0.00	0.00	—	0.00
Total	< 0.005	0.00	0.00	0.00	0.00	0.00	0.00	0.00	0.00	0.00	0.00	24.5	24.5	< 0.005	< 0.005	0.00	24.6

3. Construction Emissions Details

3.1. Demolition (2025) - Unmitigated

Criteria Pollutants (lb/day for daily, ton/yr for annual) and GHGs (lb/day for daily, MT/yr for annual)

Location	ROG	NOx	CO	SO2	PM10E	PM10D	PM10T	PM2.5E	PM2.5D	PM2.5T	BCO2	NBCO2	CO2T	CH4	N2O	R	CO2e
Onsite	—	—	—	—	—	—	—	—	—	—	—	—	—	—	—	—	—
Daily, Summer (Max)	—	—	—	—	—	—	—	—	—	—	—	—	—	—	—	—	—
Daily, Winter (Max)	—	—	—	—	—	—	—	—	—	—	—	—	—	—	—	—	—
Off-Road Equipment	2.40	22.2	19.9	0.03	0.92	—	0.92	0.84	—	0.84	—	3,425	3,425	0.14	0.03	—	3,437
Demolition	—	—	—	—	—	2.25	2.25	—	0.34	0.34	—	—	—	—	—	—	—
Onsite truck	0.00	0.00	0.00	0.00	0.00	0.00	0.00	0.00	0.00	0.00	—	0.00	0.00	0.00	0.00	0.00	0.00
Average Daily	—	—	—	—	—	—	—	—	—	—	—	—	—	—	—	—	—

Off-Road Equipment	0.13	1.22	1.09	< 0.005	0.05	—	0.05	0.05	—	0.05	—	188	188	0.01	< 0.005	—	188
Demolition	—	—	—	—	—	0.12	0.12	—	0.02	0.02	—	—	—	—	—	—	—
Onsite truck	0.00	0.00	0.00	0.00	0.00	0.00	0.00	0.00	0.00	0.00	—	0.00	0.00	0.00	0.00	0.00	0.00
Annual	—	—	—	—	—	—	—	—	—	—	—	—	—	—	—	—	—
Off-Road Equipment	0.02	0.22	0.20	< 0.005	0.01	—	0.01	0.01	—	0.01	—	31.1	31.1	< 0.005	< 0.005	—	31.2
Demolition	—	—	—	—	—	0.02	0.02	—	< 0.005	< 0.005	—	—	—	—	—	—	—
Onsite truck	0.00	0.00	0.00	0.00	0.00	0.00	0.00	0.00	0.00	0.00	—	0.00	0.00	0.00	0.00	0.00	0.00
Offsite	—	—	—	—	—	—	—	—	—	—	—	—	—	—	—	—	—
Daily, Summer (Max)	—	—	—	—	—	—	—	—	—	—	—	—	—	—	—	—	—
Daily, Winter (Max)	—	—	—	—	—	—	—	—	—	—	—	—	—	—	—	—	—
Worker	0.06	0.07	0.88	0.00	0.00	0.20	0.20	0.00	0.05	0.05	—	194	194	0.01	0.01	0.02	196
Vendor	0.00	0.00	0.00	0.00	0.00	0.00	0.00	0.00	0.00	0.00	—	0.00	0.00	0.00	0.00	0.00	0.00
Hauling	0.02	0.66	0.45	< 0.005	< 0.005	0.07	0.08	< 0.005	0.02	0.02	—	312	312	0.05	0.05	0.01	329
Average Daily	—	—	—	—	—	—	—	—	—	—	—	—	—	—	—	—	—
Worker	< 0.005	< 0.005	0.05	0.00	0.00	0.01	0.01	0.00	< 0.005	< 0.005	—	10.8	10.8	< 0.005	< 0.005	0.02	10.9
Vendor	0.00	0.00	0.00	0.00	0.00	0.00	0.00	0.00	0.00	0.00	—	0.00	0.00	0.00	0.00	0.00	0.00
Hauling	< 0.005	0.04	0.02	< 0.005	< 0.005	< 0.005	< 0.005	< 0.005	< 0.005	< 0.005	—	17.1	17.1	< 0.005	< 0.005	0.01	18.0
Annual	—	—	—	—	—	—	—	—	—	—	—	—	—	—	—	—	—
Worker	< 0.005	< 0.005	0.01	0.00	0.00	< 0.005	< 0.005	0.00	< 0.005	< 0.005	—	1.78	1.78	< 0.005	< 0.005	< 0.005	1.81
Vendor	0.00	0.00	0.00	0.00	0.00	0.00	0.00	0.00	0.00	0.00	—	0.00	0.00	0.00	0.00	0.00	0.00
Hauling	< 0.005	0.01	< 0.005	< 0.005	< 0.005	< 0.005	< 0.005	< 0.005	< 0.005	< 0.005	—	2.83	2.83	< 0.005	< 0.005	< 0.005	2.98

3.2. Demolition (2025) - Mitigated

Criteria Pollutants (lb/day for daily, ton/yr for annual) and GHGs (lb/day for daily, MT/yr for annual)

Location	ROG	NOx	CO	SO2	PM10E	PM10D	PM10T	PM2.5E	PM2.5D	PM2.5T	BCO2	NBCO2	CO2T	CH4	N2O	R	CO2e
Onsite	—	—	—	—	—	—	—	—	—	—	—	—	—	—	—	—	—
Daily, Summer (Max)	—	—	—	—	—	—	—	—	—	—	—	—	—	—	—	—	—
Daily, Winter (Max)	—	—	—	—	—	—	—	—	—	—	—	—	—	—	—	—	—
Off-Road Equipment	2.40	22.2	19.9	0.03	0.92	—	0.92	0.84	—	0.84	—	3,425	3,425	0.14	0.03	—	3,437
Demolition	—	—	—	—	—	2.25	2.25	—	0.34	0.34	—	—	—	—	—	—	—
Onsite truck	0.00	0.00	0.00	0.00	0.00	0.00	0.00	0.00	0.00	0.00	—	0.00	0.00	0.00	0.00	0.00	0.00
Average Daily	—	—	—	—	—	—	—	—	—	—	—	—	—	—	—	—	—
Off-Road Equipment	0.13	1.22	1.09	< 0.005	0.05	—	0.05	0.05	—	0.05	—	188	188	0.01	< 0.005	—	188
Demolition	—	—	—	—	—	0.12	0.12	—	0.02	0.02	—	—	—	—	—	—	—
Onsite truck	0.00	0.00	0.00	0.00	0.00	0.00	0.00	0.00	0.00	0.00	—	0.00	0.00	0.00	0.00	0.00	0.00
Annual	—	—	—	—	—	—	—	—	—	—	—	—	—	—	—	—	—
Off-Road Equipment	0.02	0.22	0.20	< 0.005	0.01	—	0.01	0.01	—	0.01	—	31.1	31.1	< 0.005	< 0.005	—	31.2
Demolition	—	—	—	—	—	0.02	0.02	—	< 0.005	< 0.005	—	—	—	—	—	—	—
Onsite truck	0.00	0.00	0.00	0.00	0.00	0.00	0.00	0.00	0.00	0.00	—	0.00	0.00	0.00	0.00	0.00	0.00
Offsite	—	—	—	—	—	—	—	—	—	—	—	—	—	—	—	—	—

Daily, Summer (Max)	—	—	—	—	—	—	—	—	—	—	—	—	—	—	—	—	—
Daily, Winter (Max)	—	—	—	—	—	—	—	—	—	—	—	—	—	—	—	—	—
Worker	0.06	0.07	0.88	0.00	0.00	0.20	0.20	0.00	0.05	0.05	—	194	194	0.01	0.01	0.02	196
Vendor	0.00	0.00	0.00	0.00	0.00	0.00	0.00	0.00	0.00	0.00	—	0.00	0.00	0.00	0.00	0.00	0.00
Hauling	0.02	0.66	0.45	< 0.005	< 0.005	0.07	0.08	< 0.005	0.02	0.02	—	312	312	0.05	0.05	0.01	329
Average Daily	—	—	—	—	—	—	—	—	—	—	—	—	—	—	—	—	—
Worker	< 0.005	< 0.005	0.05	0.00	0.00	0.01	0.01	0.00	< 0.005	< 0.005	—	10.8	10.8	< 0.005	< 0.005	0.02	10.9
Vendor	0.00	0.00	0.00	0.00	0.00	0.00	0.00	0.00	0.00	0.00	—	0.00	0.00	0.00	0.00	0.00	0.00
Hauling	< 0.005	0.04	0.02	< 0.005	< 0.005	< 0.005	< 0.005	< 0.005	< 0.005	< 0.005	—	17.1	17.1	< 0.005	< 0.005	0.01	18.0
Annual	—	—	—	—	—	—	—	—	—	—	—	—	—	—	—	—	—
Worker	< 0.005	< 0.005	0.01	0.00	0.00	< 0.005	< 0.005	0.00	< 0.005	< 0.005	—	1.78	1.78	< 0.005	< 0.005	< 0.005	1.81
Vendor	0.00	0.00	0.00	0.00	0.00	0.00	0.00	0.00	0.00	0.00	—	0.00	0.00	0.00	0.00	0.00	0.00
Hauling	< 0.005	0.01	< 0.005	< 0.005	< 0.005	< 0.005	< 0.005	< 0.005	< 0.005	< 0.005	—	2.83	2.83	< 0.005	< 0.005	< 0.005	2.98

3.3. Site Preparation (2025) - Unmitigated

Criteria Pollutants (lb/day for daily, ton/yr for annual) and GHGs (lb/day for daily, MT/yr for annual)

Location	ROG	NOx	CO	SO2	PM10E	PM10D	PM10T	PM2.5E	PM2.5D	PM2.5T	BCO2	NBCO2	CO2T	CH4	N2O	R	CO2e
Onsite	—	—	—	—	—	—	—	—	—	—	—	—	—	—	—	—	—
Daily, Summer (Max)	—	—	—	—	—	—	—	—	—	—	—	—	—	—	—	—	—
Daily, Winter (Max)	—	—	—	—	—	—	—	—	—	—	—	—	—	—	—	—	—
Off-Road Equipment	3.31	31.6	30.2	0.05	1.37	—	1.37	1.26	—	1.26	—	5,295	5,295	0.21	0.04	—	5,314

Dust From Material Movement	—	—	—	—	—	19.7	19.7	—	10.1	10.1	—	—	—	—	—	—	—
Onsite truck	0.00	0.00	0.00	0.00	0.00	0.00	0.00	0.00	0.00	0.00	—	0.00	0.00	0.00	0.00	0.00	0.00
Average Daily	—	—	—	—	—	—	—	—	—	—	—	—	—	—	—	—	—
Off-Road Equipment	0.05	0.43	0.41	< 0.005	0.02	—	0.02	0.02	—	0.02	—	72.5	72.5	< 0.005	< 0.005	—	72.8
Dust From Material Movement	—	—	—	—	—	0.27	0.27	—	0.14	0.14	—	—	—	—	—	—	—
Onsite truck	0.00	0.00	0.00	0.00	0.00	0.00	0.00	0.00	0.00	0.00	—	0.00	0.00	0.00	0.00	0.00	0.00
Annual	—	—	—	—	—	—	—	—	—	—	—	—	—	—	—	—	—
Off-Road Equipment	0.01	0.08	0.08	< 0.005	< 0.005	—	< 0.005	< 0.005	—	< 0.005	—	12.0	12.0	< 0.005	< 0.005	—	12.1
Dust From Material Movement	—	—	—	—	—	0.05	0.05	—	0.03	0.03	—	—	—	—	—	—	—
Onsite truck	0.00	0.00	0.00	0.00	0.00	0.00	0.00	0.00	0.00	0.00	—	0.00	0.00	0.00	0.00	0.00	0.00
Offsite	—	—	—	—	—	—	—	—	—	—	—	—	—	—	—	—	—
Daily, Summer (Max)	—	—	—	—	—	—	—	—	—	—	—	—	—	—	—	—	—
Daily, Winter (Max)	—	—	—	—	—	—	—	—	—	—	—	—	—	—	—	—	—
Worker	0.08	0.08	1.03	0.00	0.00	0.23	0.23	0.00	0.05	0.05	—	226	226	0.01	0.01	0.02	229
Vendor	0.00	0.00	0.00	0.00	0.00	0.00	0.00	0.00	0.00	0.00	—	0.00	0.00	0.00	0.00	0.00	0.00
Hauling	0.00	0.00	0.00	0.00	0.00	0.00	0.00	0.00	0.00	0.00	—	0.00	0.00	0.00	0.00	0.00	0.00

Average Daily	—	—	—	—	—	—	—	—	—	—	—	—	—	—	—	—	—
Worker	< 0.005	< 0.005	0.01	0.00	0.00	< 0.005	< 0.005	0.00	< 0.005	< 0.005	—	3.14	3.14	< 0.005	< 0.005	0.01	3.19
Vendor	0.00	0.00	0.00	0.00	0.00	0.00	0.00	0.00	0.00	0.00	—	0.00	0.00	0.00	0.00	0.00	0.00
Hauling	0.00	0.00	0.00	0.00	0.00	0.00	0.00	0.00	0.00	0.00	—	0.00	0.00	0.00	0.00	0.00	0.00
Annual	—	—	—	—	—	—	—	—	—	—	—	—	—	—	—	—	—
Worker	< 0.005	< 0.005	< 0.005	0.00	0.00	< 0.005	< 0.005	0.00	< 0.005	< 0.005	—	0.52	0.52	< 0.005	< 0.005	< 0.005	0.53
Vendor	0.00	0.00	0.00	0.00	0.00	0.00	0.00	0.00	0.00	0.00	—	0.00	0.00	0.00	0.00	0.00	0.00
Hauling	0.00	0.00	0.00	0.00	0.00	0.00	0.00	0.00	0.00	0.00	—	0.00	0.00	0.00	0.00	0.00	0.00

3.4. Site Preparation (2025) - Mitigated

Criteria Pollutants (lb/day for daily, ton/yr for annual) and GHGs (lb/day for daily, MT/yr for annual)

Location	ROG	NOx	CO	SO2	PM10E	PM10D	PM10T	PM2.5E	PM2.5D	PM2.5T	BCO2	NBCO2	CO2T	CH4	N2O	R	CO2e
Onsite	—	—	—	—	—	—	—	—	—	—	—	—	—	—	—	—	—
Daily, Summer (Max)	—	—	—	—	—	—	—	—	—	—	—	—	—	—	—	—	—
Daily, Winter (Max)	—	—	—	—	—	—	—	—	—	—	—	—	—	—	—	—	—
Off-Road Equipment	3.31	31.6	30.2	0.05	1.37	—	1.37	1.26	—	1.26	—	5,295	5,295	0.21	0.04	—	5,314
Dust From Material Movement	—	—	—	—	—	7.67	7.67	—	3.94	3.94	—	—	—	—	—	—	—
Onsite truck	0.00	0.00	0.00	0.00	0.00	0.00	0.00	0.00	0.00	0.00	—	0.00	0.00	0.00	0.00	0.00	0.00
Average Daily	—	—	—	—	—	—	—	—	—	—	—	—	—	—	—	—	—
Off-Road Equipment	0.05	0.43	0.41	< 0.005	0.02	—	0.02	0.02	—	0.02	—	72.5	72.5	< 0.005	< 0.005	—	72.8

Dust From Material Movement	—	—	—	—	—	0.11	0.11	—	0.05	0.05	—	—	—	—	—	—	—
Onsite truck	0.00	0.00	0.00	0.00	0.00	0.00	0.00	0.00	0.00	0.00	—	0.00	0.00	0.00	0.00	0.00	0.00
Annual	—	—	—	—	—	—	—	—	—	—	—	—	—	—	—	—	—
Off-Road Equipment	0.01	0.08	0.08	< 0.005	< 0.005	—	< 0.005	< 0.005	—	< 0.005	—	12.0	12.0	< 0.005	< 0.005	—	12.1
Dust From Material Movement	—	—	—	—	—	0.02	0.02	—	0.01	0.01	—	—	—	—	—	—	—
Onsite truck	0.00	0.00	0.00	0.00	0.00	0.00	0.00	0.00	0.00	0.00	—	0.00	0.00	0.00	0.00	0.00	0.00
Offsite	—	—	—	—	—	—	—	—	—	—	—	—	—	—	—	—	—
Daily, Summer (Max)	—	—	—	—	—	—	—	—	—	—	—	—	—	—	—	—	—
Daily, Winter (Max)	—	—	—	—	—	—	—	—	—	—	—	—	—	—	—	—	—
Worker	0.08	0.08	1.03	0.00	0.00	0.23	0.23	0.00	0.05	0.05	—	226	226	0.01	0.01	0.02	229
Vendor	0.00	0.00	0.00	0.00	0.00	0.00	0.00	0.00	0.00	0.00	—	0.00	0.00	0.00	0.00	0.00	0.00
Hauling	0.00	0.00	0.00	0.00	0.00	0.00	0.00	0.00	0.00	0.00	—	0.00	0.00	0.00	0.00	0.00	0.00
Average Daily	—	—	—	—	—	—	—	—	—	—	—	—	—	—	—	—	—
Worker	< 0.005	< 0.005	0.01	0.00	0.00	< 0.005	< 0.005	0.00	< 0.005	< 0.005	—	3.14	3.14	< 0.005	< 0.005	0.01	3.19
Vendor	0.00	0.00	0.00	0.00	0.00	0.00	0.00	0.00	0.00	0.00	—	0.00	0.00	0.00	0.00	0.00	0.00
Hauling	0.00	0.00	0.00	0.00	0.00	0.00	0.00	0.00	0.00	0.00	—	0.00	0.00	0.00	0.00	0.00	0.00
Annual	—	—	—	—	—	—	—	—	—	—	—	—	—	—	—	—	—
Worker	< 0.005	< 0.005	< 0.005	0.00	0.00	< 0.005	< 0.005	0.00	< 0.005	< 0.005	—	0.52	0.52	< 0.005	< 0.005	< 0.005	0.53
Vendor	0.00	0.00	0.00	0.00	0.00	0.00	0.00	0.00	0.00	0.00	—	0.00	0.00	0.00	0.00	0.00	0.00
Hauling	0.00	0.00	0.00	0.00	0.00	0.00	0.00	0.00	0.00	0.00	—	0.00	0.00	0.00	0.00	0.00	0.00

3.5. Grading (2025) - Unmitigated

Criteria Pollutants (lb/day for daily, ton/yr for annual) and GHGs (lb/day for daily, MT/yr for annual)

Location	ROG	NOx	CO	SO2	PM10E	PM10D	PM10T	PM2.5E	PM2.5D	PM2.5T	BCO2	NBCO2	CO2T	CH4	N2O	R	CO2e
Onsite	—	—	—	—	—	—	—	—	—	—	—	—	—	—	—	—	—
Daily, Summer (Max)	—	—	—	—	—	—	—	—	—	—	—	—	—	—	—	—	—
Daily, Winter (Max)	—	—	—	—	—	—	—	—	—	—	—	—	—	—	—	—	—
Off-Road Equipment	1.74	16.3	17.9	0.03	0.72	—	0.72	0.66	—	0.66	—	2,959	2,959	0.12	0.02	—	2,970
Dust From Material Movement	—	—	—	—	—	7.08	7.08	—	3.42	3.42	—	—	—	—	—	—	—
Onsite truck	0.00	0.00	0.00	0.00	0.00	0.00	0.00	0.00	0.00	0.00	—	0.00	0.00	0.00	0.00	0.00	0.00
Average Daily	—	—	—	—	—	—	—	—	—	—	—	—	—	—	—	—	—
Off-Road Equipment	0.08	0.70	0.77	< 0.005	0.03	—	0.03	0.03	—	0.03	—	127	127	0.01	< 0.005	—	128
Dust From Material Movement	—	—	—	—	—	0.30	0.30	—	0.15	0.15	—	—	—	—	—	—	—
Onsite truck	0.00	0.00	0.00	0.00	0.00	0.00	0.00	0.00	0.00	0.00	—	0.00	0.00	0.00	0.00	0.00	0.00
Annual	—	—	—	—	—	—	—	—	—	—	—	—	—	—	—	—	—
Off-Road Equipment	0.01	0.13	0.14	< 0.005	0.01	—	0.01	0.01	—	0.01	—	21.1	21.1	< 0.005	< 0.005	—	21.2
Dust From Material Movement	—	—	—	—	—	0.06	0.06	—	0.03	0.03	—	—	—	—	—	—	—

Onsite truck	0.00	0.00	0.00	0.00	0.00	0.00	0.00	0.00	0.00	0.00	—	0.00	0.00	0.00	0.00	0.00	0.00
Offsite	—	—	—	—	—	—	—	—	—	—	—	—	—	—	—	—	—
Daily, Summer (Max)	—	—	—	—	—	—	—	—	—	—	—	—	—	—	—	—	—
Daily, Winter (Max)	—	—	—	—	—	—	—	—	—	—	—	—	—	—	—	—	—
Worker	0.06	0.07	0.88	0.00	0.00	0.20	0.20	0.00	0.05	0.05	—	194	194	0.01	0.01	0.02	196
Vendor	0.00	0.00	0.00	0.00	0.00	0.00	0.00	0.00	0.00	0.00	—	0.00	0.00	0.00	0.00	0.00	0.00
Hauling	0.00	0.00	0.00	0.00	0.00	0.00	0.00	0.00	0.00	0.00	—	0.00	0.00	0.00	0.00	0.00	0.00
Average Daily	—	—	—	—	—	—	—	—	—	—	—	—	—	—	—	—	—
Worker	< 0.005	< 0.005	0.04	0.00	0.00	0.01	0.01	0.00	< 0.005	< 0.005	—	8.46	8.46	< 0.005	< 0.005	0.01	8.58
Vendor	0.00	0.00	0.00	0.00	0.00	0.00	0.00	0.00	0.00	0.00	—	0.00	0.00	0.00	0.00	0.00	0.00
Hauling	0.00	0.00	0.00	0.00	0.00	0.00	0.00	0.00	0.00	0.00	—	0.00	0.00	0.00	0.00	0.00	0.00
Annual	—	—	—	—	—	—	—	—	—	—	—	—	—	—	—	—	—
Worker	< 0.005	< 0.005	0.01	0.00	0.00	< 0.005	< 0.005	0.00	< 0.005	< 0.005	—	1.40	1.40	< 0.005	< 0.005	< 0.005	1.42
Vendor	0.00	0.00	0.00	0.00	0.00	0.00	0.00	0.00	0.00	0.00	—	0.00	0.00	0.00	0.00	0.00	0.00
Hauling	0.00	0.00	0.00	0.00	0.00	0.00	0.00	0.00	0.00	0.00	—	0.00	0.00	0.00	0.00	0.00	0.00

3.6. Grading (2025) - Mitigated

Criteria Pollutants (lb/day for daily, ton/yr for annual) and GHGs (lb/day for daily, MT/yr for annual)

Location	ROG	NOx	CO	SO2	PM10E	PM10D	PM10T	PM2.5E	PM2.5D	PM2.5T	BCO2	NBCO2	CO2T	CH4	N2O	R	CO2e
Onsite	—	—	—	—	—	—	—	—	—	—	—	—	—	—	—	—	—
Daily, Summer (Max)	—	—	—	—	—	—	—	—	—	—	—	—	—	—	—	—	—
Daily, Winter (Max)	—	—	—	—	—	—	—	—	—	—	—	—	—	—	—	—	—

Off-Road Equipment	1.74	16.3	17.9	0.03	0.72	—	0.72	0.66	—	0.66	—	2,959	2,959	0.12	0.02	—	2,970
Dust From Material Movement	—	—	—	—	—	2.76	2.76	—	1.34	1.34	—	—	—	—	—	—	—
Onsite truck	0.00	0.00	0.00	0.00	0.00	0.00	0.00	0.00	0.00	0.00	—	0.00	0.00	0.00	0.00	0.00	0.00
Average Daily	—	—	—	—	—	—	—	—	—	—	—	—	—	—	—	—	—
Off-Road Equipment	0.08	0.70	0.77	< 0.005	0.03	—	0.03	0.03	—	0.03	—	127	127	0.01	< 0.005	—	128
Dust From Material Movement	—	—	—	—	—	0.12	0.12	—	0.06	0.06	—	—	—	—	—	—	—
Onsite truck	0.00	0.00	0.00	0.00	0.00	0.00	0.00	0.00	0.00	0.00	—	0.00	0.00	0.00	0.00	0.00	0.00
Annual	—	—	—	—	—	—	—	—	—	—	—	—	—	—	—	—	—
Off-Road Equipment	0.01	0.13	0.14	< 0.005	0.01	—	0.01	0.01	—	0.01	—	21.1	21.1	< 0.005	< 0.005	—	21.2
Dust From Material Movement	—	—	—	—	—	0.02	0.02	—	0.01	0.01	—	—	—	—	—	—	—
Onsite truck	0.00	0.00	0.00	0.00	0.00	0.00	0.00	0.00	0.00	0.00	—	0.00	0.00	0.00	0.00	0.00	0.00
Offsite	—	—	—	—	—	—	—	—	—	—	—	—	—	—	—	—	—
Daily, Summer (Max)	—	—	—	—	—	—	—	—	—	—	—	—	—	—	—	—	—
Daily, Winter (Max)	—	—	—	—	—	—	—	—	—	—	—	—	—	—	—	—	—
Worker	0.06	0.07	0.88	0.00	0.00	0.20	0.20	0.00	0.05	0.05	—	194	194	0.01	0.01	0.02	196
Vendor	0.00	0.00	0.00	0.00	0.00	0.00	0.00	0.00	0.00	0.00	—	0.00	0.00	0.00	0.00	0.00	0.00

Hauling	0.00	0.00	0.00	0.00	0.00	0.00	0.00	0.00	0.00	0.00	—	0.00	0.00	0.00	0.00	0.00	0.00
Average Daily	—	—	—	—	—	—	—	—	—	—	—	—	—	—	—	—	—
Worker	< 0.005	< 0.005	0.04	0.00	0.00	0.01	0.01	0.00	< 0.005	< 0.005	—	8.46	8.46	< 0.005	< 0.005	0.01	8.58
Vendor	0.00	0.00	0.00	0.00	0.00	0.00	0.00	0.00	0.00	0.00	—	0.00	0.00	0.00	0.00	0.00	0.00
Hauling	0.00	0.00	0.00	0.00	0.00	0.00	0.00	0.00	0.00	0.00	—	0.00	0.00	0.00	0.00	0.00	0.00
Annual	—	—	—	—	—	—	—	—	—	—	—	—	—	—	—	—	—
Worker	< 0.005	< 0.005	0.01	0.00	0.00	< 0.005	< 0.005	0.00	< 0.005	< 0.005	—	1.40	1.40	< 0.005	< 0.005	< 0.005	1.42
Vendor	0.00	0.00	0.00	0.00	0.00	0.00	0.00	0.00	0.00	0.00	—	0.00	0.00	0.00	0.00	0.00	0.00
Hauling	0.00	0.00	0.00	0.00	0.00	0.00	0.00	0.00	0.00	0.00	—	0.00	0.00	0.00	0.00	0.00	0.00

3.7. Grading (2026) - Unmitigated

Criteria Pollutants (lb/day for daily, ton/yr for annual) and GHGs (lb/day for daily, MT/yr for annual)

Location	ROG	NOx	CO	SO2	PM10E	PM10D	PM10T	PM2.5E	PM2.5D	PM2.5T	BCO2	NBCO2	CO2T	CH4	N2O	R	CO2e
Onsite	—	—	—	—	—	—	—	—	—	—	—	—	—	—	—	—	—
Daily, Summer (Max)	—	—	—	—	—	—	—	—	—	—	—	—	—	—	—	—	—
Daily, Winter (Max)	—	—	—	—	—	—	—	—	—	—	—	—	—	—	—	—	—
Off-Road Equipment	1.65	15.0	17.4	0.03	0.65	—	0.65	0.59	—	0.59	—	2,960	2,960	0.12	0.02	—	2,970
Dust From Material Movement	—	—	—	—	—	7.08	7.08	—	3.42	3.42	—	—	—	—	—	—	—
Onsite truck	0.00	0.00	0.00	0.00	0.00	0.00	0.00	0.00	0.00	0.00	—	0.00	0.00	0.00	0.00	0.00	0.00
Average Daily	—	—	—	—	—	—	—	—	—	—	—	—	—	—	—	—	—

Off-Road Equipment	0.05	0.44	0.51	< 0.005	0.02	—	0.02	0.02	—	0.02	—	86.9	86.9	< 0.005	< 0.005	—	87.2
Dust From Material Movement	—	—	—	—	—	0.21	0.21	—	0.10	0.10	—	—	—	—	—	—	—
Onsite truck	0.00	0.00	0.00	0.00	0.00	0.00	0.00	0.00	0.00	0.00	—	0.00	0.00	0.00	0.00	0.00	0.00
Annual	—	—	—	—	—	—	—	—	—	—	—	—	—	—	—	—	—
Off-Road Equipment	0.01	0.08	0.09	< 0.005	< 0.005	—	< 0.005	< 0.005	—	< 0.005	—	14.4	14.4	< 0.005	< 0.005	—	14.4
Dust From Material Movement	—	—	—	—	—	0.04	0.04	—	0.02	0.02	—	—	—	—	—	—	—
Onsite truck	0.00	0.00	0.00	0.00	0.00	0.00	0.00	0.00	0.00	0.00	—	0.00	0.00	0.00	0.00	0.00	0.00
Offsite	—	—	—	—	—	—	—	—	—	—	—	—	—	—	—	—	—
Daily, Summer (Max)	—	—	—	—	—	—	—	—	—	—	—	—	—	—	—	—	—
Daily, Winter (Max)	—	—	—	—	—	—	—	—	—	—	—	—	—	—	—	—	—
Worker	0.06	0.07	0.82	0.00	0.00	0.20	0.20	0.00	0.05	0.05	—	190	190	< 0.005	0.01	0.02	192
Vendor	0.00	0.00	0.00	0.00	0.00	0.00	0.00	0.00	0.00	0.00	—	0.00	0.00	0.00	0.00	0.00	0.00
Hauling	0.00	0.00	0.00	0.00	0.00	0.00	0.00	0.00	0.00	0.00	—	0.00	0.00	0.00	0.00	0.00	0.00
Average Daily	—	—	—	—	—	—	—	—	—	—	—	—	—	—	—	—	—
Worker	< 0.005	< 0.005	0.03	0.00	0.00	0.01	0.01	0.00	< 0.005	< 0.005	—	5.65	5.65	< 0.005	< 0.005	0.01	5.73
Vendor	0.00	0.00	0.00	0.00	0.00	0.00	0.00	0.00	0.00	0.00	—	0.00	0.00	0.00	0.00	0.00	0.00
Hauling	0.00	0.00	0.00	0.00	0.00	0.00	0.00	0.00	0.00	0.00	—	0.00	0.00	0.00	0.00	0.00	0.00
Annual	—	—	—	—	—	—	—	—	—	—	—	—	—	—	—	—	—
Worker	< 0.005	< 0.005	< 0.005	0.00	0.00	< 0.005	< 0.005	0.00	< 0.005	< 0.005	—	0.94	0.94	< 0.005	< 0.005	< 0.005	0.95

Vendor	0.00	0.00	0.00	0.00	0.00	0.00	0.00	0.00	0.00	0.00	—	0.00	0.00	0.00	0.00	0.00	0.00
Hauling	0.00	0.00	0.00	0.00	0.00	0.00	0.00	0.00	0.00	0.00	—	0.00	0.00	0.00	0.00	0.00	0.00

3.8. Grading (2026) - Mitigated

Criteria Pollutants (lb/day for daily, ton/yr for annual) and GHGs (lb/day for daily, MT/yr for annual)

Location	ROG	NOx	CO	SO2	PM10E	PM10D	PM10T	PM2.5E	PM2.5D	PM2.5T	BCO2	NBCO2	CO2T	CH4	N2O	R	CO2e
Onsite	—	—	—	—	—	—	—	—	—	—	—	—	—	—	—	—	—
Daily, Summer (Max)	—	—	—	—	—	—	—	—	—	—	—	—	—	—	—	—	—
Daily, Winter (Max)	—	—	—	—	—	—	—	—	—	—	—	—	—	—	—	—	—
Off-Road Equipment	1.65	15.0	17.4	0.03	0.65	—	0.65	0.59	—	0.59	—	2,960	2,960	0.12	0.02	—	2,970
Dust From Material Movement	—	—	—	—	—	2.76	2.76	—	1.34	1.34	—	—	—	—	—	—	—
Onsite truck	0.00	0.00	0.00	0.00	0.00	0.00	0.00	0.00	0.00	0.00	—	0.00	0.00	0.00	0.00	0.00	0.00
Average Daily	—	—	—	—	—	—	—	—	—	—	—	—	—	—	—	—	—
Off-Road Equipment	0.05	0.44	0.51	< 0.005	0.02	—	0.02	0.02	—	0.02	—	86.9	86.9	< 0.005	< 0.005	—	87.2
Dust From Material Movement	—	—	—	—	—	0.08	0.08	—	0.04	0.04	—	—	—	—	—	—	—
Onsite truck	0.00	0.00	0.00	0.00	0.00	0.00	0.00	0.00	0.00	0.00	—	0.00	0.00	0.00	0.00	0.00	0.00
Annual	—	—	—	—	—	—	—	—	—	—	—	—	—	—	—	—	—
Off-Road Equipment	0.01	0.08	0.09	< 0.005	< 0.005	—	< 0.005	< 0.005	—	< 0.005	—	14.4	14.4	< 0.005	< 0.005	—	14.4

Dust From Material Movement	—	—	—	—	—	0.01	0.01	—	0.01	0.01	—	—	—	—	—	—	—
Onsite truck	0.00	0.00	0.00	0.00	0.00	0.00	0.00	0.00	0.00	0.00	—	0.00	0.00	0.00	0.00	0.00	0.00
Offsite	—	—	—	—	—	—	—	—	—	—	—	—	—	—	—	—	—
Daily, Summer (Max)	—	—	—	—	—	—	—	—	—	—	—	—	—	—	—	—	—
Daily, Winter (Max)	—	—	—	—	—	—	—	—	—	—	—	—	—	—	—	—	—
Worker	0.06	0.07	0.82	0.00	0.00	0.20	0.20	0.00	0.05	0.05	—	190	190	< 0.005	0.01	0.02	192
Vendor	0.00	0.00	0.00	0.00	0.00	0.00	0.00	0.00	0.00	0.00	—	0.00	0.00	0.00	0.00	0.00	0.00
Hauling	0.00	0.00	0.00	0.00	0.00	0.00	0.00	0.00	0.00	0.00	—	0.00	0.00	0.00	0.00	0.00	0.00
Average Daily	—	—	—	—	—	—	—	—	—	—	—	—	—	—	—	—	—
Worker	< 0.005	< 0.005	0.03	0.00	0.00	0.01	0.01	0.00	< 0.005	< 0.005	—	5.65	5.65	< 0.005	< 0.005	0.01	5.73
Vendor	0.00	0.00	0.00	0.00	0.00	0.00	0.00	0.00	0.00	0.00	—	0.00	0.00	0.00	0.00	0.00	0.00
Hauling	0.00	0.00	0.00	0.00	0.00	0.00	0.00	0.00	0.00	0.00	—	0.00	0.00	0.00	0.00	0.00	0.00
Annual	—	—	—	—	—	—	—	—	—	—	—	—	—	—	—	—	—
Worker	< 0.005	< 0.005	< 0.005	0.00	0.00	< 0.005	< 0.005	0.00	< 0.005	< 0.005	—	0.94	0.94	< 0.005	< 0.005	< 0.005	0.95
Vendor	0.00	0.00	0.00	0.00	0.00	0.00	0.00	0.00	0.00	0.00	—	0.00	0.00	0.00	0.00	0.00	0.00
Hauling	0.00	0.00	0.00	0.00	0.00	0.00	0.00	0.00	0.00	0.00	—	0.00	0.00	0.00	0.00	0.00	0.00

3.9. Building Construction (2026) - Unmitigated

Criteria Pollutants (lb/day for daily, ton/yr for annual) and GHGs (lb/day for daily, MT/yr for annual)

Location	ROG	NOx	CO	SO2	PM10E	PM10D	PM10T	PM2.5E	PM2.5D	PM2.5T	BCO2	NBCO2	CO2T	CH4	N2O	R	CO2e
Onsite	—	—	—	—	—	—	—	—	—	—	—	—	—	—	—	—	—

Daily, Summer (Max)	—	—	—	—	—	—	—	—	—	—	—	—	—	—	—	—	—
Daily, Winter (Max)	—	—	—	—	—	—	—	—	—	—	—	—	—	—	—	—	—
Off-Road Equipment	1.07	9.85	13.0	0.02	0.38	—	0.38	0.35	—	0.35	—	2,397	2,397	0.10	0.02	—	2,405
Onsite truck	0.00	0.00	0.00	0.00	0.00	0.00	0.00	0.00	0.00	0.00	—	0.00	0.00	0.00	0.00	0.00	0.00
Average Daily	—	—	—	—	—	—	—	—	—	—	—	—	—	—	—	—	—
Off-Road Equipment	0.09	0.86	1.14	< 0.005	0.03	—	0.03	0.03	—	0.03	—	210	210	0.01	< 0.005	—	211
Onsite truck	0.00	0.00	0.00	0.00	0.00	0.00	0.00	0.00	0.00	0.00	—	0.00	0.00	0.00	0.00	0.00	0.00
Annual	—	—	—	—	—	—	—	—	—	—	—	—	—	—	—	—	—
Off-Road Equipment	0.02	0.16	0.21	< 0.005	0.01	—	0.01	0.01	—	0.01	—	34.8	34.8	< 0.005	< 0.005	—	34.9
Onsite truck	0.00	0.00	0.00	0.00	0.00	0.00	0.00	0.00	0.00	0.00	—	0.00	0.00	0.00	0.00	0.00	0.00
Offsite	—	—	—	—	—	—	—	—	—	—	—	—	—	—	—	—	—
Daily, Summer (Max)	—	—	—	—	—	—	—	—	—	—	—	—	—	—	—	—	—
Daily, Winter (Max)	—	—	—	—	—	—	—	—	—	—	—	—	—	—	—	—	—
Worker	0.00	0.00	0.00	0.00	0.00	0.00	0.00	0.00	0.00	0.00	—	0.00	0.00	0.00	0.00	0.00	0.00
Vendor	0.00	0.00	0.00	0.00	0.00	0.00	0.00	0.00	0.00	0.00	—	0.00	0.00	0.00	0.00	0.00	0.00
Hauling	0.00	0.00	0.00	0.00	0.00	0.00	0.00	0.00	0.00	0.00	—	0.00	0.00	0.00	0.00	0.00	0.00
Average Daily	—	—	—	—	—	—	—	—	—	—	—	—	—	—	—	—	—
Worker	0.00	0.00	0.00	0.00	0.00	0.00	0.00	0.00	0.00	0.00	—	0.00	0.00	0.00	0.00	0.00	0.00

Vendor	0.00	0.00	0.00	0.00	0.00	0.00	0.00	0.00	0.00	0.00	—	0.00	0.00	0.00	0.00	0.00	0.00
Hauling	0.00	0.00	0.00	0.00	0.00	0.00	0.00	0.00	0.00	0.00	—	0.00	0.00	0.00	0.00	0.00	0.00
Annual	—	—	—	—	—	—	—	—	—	—	—	—	—	—	—	—	—
Worker	0.00	0.00	0.00	0.00	0.00	0.00	0.00	0.00	0.00	0.00	—	0.00	0.00	0.00	0.00	0.00	0.00
Vendor	0.00	0.00	0.00	0.00	0.00	0.00	0.00	0.00	0.00	0.00	—	0.00	0.00	0.00	0.00	0.00	0.00
Hauling	0.00	0.00	0.00	0.00	0.00	0.00	0.00	0.00	0.00	0.00	—	0.00	0.00	0.00	0.00	0.00	0.00

3.10. Building Construction (2026) - Mitigated

Criteria Pollutants (lb/day for daily, ton/yr for annual) and GHGs (lb/day for daily, MT/yr for annual)

Location	ROG	NOx	CO	SO2	PM10E	PM10D	PM10T	PM2.5E	PM2.5D	PM2.5T	BCO2	NBCO2	CO2T	CH4	N2O	R	CO2e
Onsite	—	—	—	—	—	—	—	—	—	—	—	—	—	—	—	—	—
Daily, Summer (Max)	—	—	—	—	—	—	—	—	—	—	—	—	—	—	—	—	—
Daily, Winter (Max)	—	—	—	—	—	—	—	—	—	—	—	—	—	—	—	—	—
Off-Road Equipment	1.07	9.85	13.0	0.02	0.38	—	0.38	0.35	—	0.35	—	2,397	2,397	0.10	0.02	—	2,405
Onsite truck	0.00	0.00	0.00	0.00	0.00	0.00	0.00	0.00	0.00	0.00	—	0.00	0.00	0.00	0.00	0.00	0.00
Average Daily	—	—	—	—	—	—	—	—	—	—	—	—	—	—	—	—	—
Off-Road Equipment	0.09	0.86	1.14	< 0.005	0.03	—	0.03	0.03	—	0.03	—	210	210	0.01	< 0.005	—	211
Onsite truck	0.00	0.00	0.00	0.00	0.00	0.00	0.00	0.00	0.00	0.00	—	0.00	0.00	0.00	0.00	0.00	0.00
Annual	—	—	—	—	—	—	—	—	—	—	—	—	—	—	—	—	—
Off-Road Equipment	0.02	0.16	0.21	< 0.005	0.01	—	0.01	0.01	—	0.01	—	34.8	34.8	< 0.005	< 0.005	—	34.9
Onsite truck	0.00	0.00	0.00	0.00	0.00	0.00	0.00	0.00	0.00	0.00	—	0.00	0.00	0.00	0.00	0.00	0.00

Offsite	—	—	—	—	—	—	—	—	—	—	—	—	—	—	—	—	—
Daily, Summer (Max)	—	—	—	—	—	—	—	—	—	—	—	—	—	—	—	—	—
Daily, Winter (Max)	—	—	—	—	—	—	—	—	—	—	—	—	—	—	—	—	—
Worker	0.00	0.00	0.00	0.00	0.00	0.00	0.00	0.00	0.00	0.00	—	0.00	0.00	0.00	0.00	0.00	0.00
Vendor	0.00	0.00	0.00	0.00	0.00	0.00	0.00	0.00	0.00	0.00	—	0.00	0.00	0.00	0.00	0.00	0.00
Hauling	0.00	0.00	0.00	0.00	0.00	0.00	0.00	0.00	0.00	0.00	—	0.00	0.00	0.00	0.00	0.00	0.00
Average Daily	—	—	—	—	—	—	—	—	—	—	—	—	—	—	—	—	—
Worker	0.00	0.00	0.00	0.00	0.00	0.00	0.00	0.00	0.00	0.00	—	0.00	0.00	0.00	0.00	0.00	0.00
Vendor	0.00	0.00	0.00	0.00	0.00	0.00	0.00	0.00	0.00	0.00	—	0.00	0.00	0.00	0.00	0.00	0.00
Hauling	0.00	0.00	0.00	0.00	0.00	0.00	0.00	0.00	0.00	0.00	—	0.00	0.00	0.00	0.00	0.00	0.00
Annual	—	—	—	—	—	—	—	—	—	—	—	—	—	—	—	—	—
Worker	0.00	0.00	0.00	0.00	0.00	0.00	0.00	0.00	0.00	0.00	—	0.00	0.00	0.00	0.00	0.00	0.00
Vendor	0.00	0.00	0.00	0.00	0.00	0.00	0.00	0.00	0.00	0.00	—	0.00	0.00	0.00	0.00	0.00	0.00
Hauling	0.00	0.00	0.00	0.00	0.00	0.00	0.00	0.00	0.00	0.00	—	0.00	0.00	0.00	0.00	0.00	0.00

3.11. Paving (2026) - Unmitigated

Criteria Pollutants (lb/day for daily, ton/yr for annual) and GHGs (lb/day for daily, MT/yr for annual)

Location	ROG	NOx	CO	SO2	PM10E	PM10D	PM10T	PM2.5E	PM2.5D	PM2.5T	BCO2	NBCO2	CO2T	CH4	N2O	R	CO2e
Onsite	—	—	—	—	—	—	—	—	—	—	—	—	—	—	—	—	—
Daily, Summer (Max)	—	—	—	—	—	—	—	—	—	—	—	—	—	—	—	—	—
Off-Road Equipment	0.68	6.23	8.81	0.01	0.26	—	0.26	0.24	—	0.24	—	1,350	1,350	0.05	0.01	—	1,355
Paving	0.50	—	—	—	—	—	—	—	—	—	—	—	—	—	—	—	—

Onsite truck	0.00	0.00	0.00	0.00	0.00	0.00	0.00	0.00	0.00	0.00	—	0.00	0.00	0.00	0.00	0.00	0.00
Daily, Winter (Max)	—	—	—	—	—	—	—	—	—	—	—	—	—	—	—	—	—
Average Daily	—	—	—	—	—	—	—	—	—	—	—	—	—	—	—	—	—
Off-Road Equipment	0.04	0.36	0.51	< 0.005	0.01	—	0.01	0.01	—	0.01	—	77.7	77.7	< 0.005	< 0.005	—	77.9
Paving	0.03	—	—	—	—	—	—	—	—	—	—	—	—	—	—	—	—
Onsite truck	0.00	0.00	0.00	0.00	0.00	0.00	0.00	0.00	0.00	0.00	—	0.00	0.00	0.00	0.00	0.00	0.00
Annual	—	—	—	—	—	—	—	—	—	—	—	—	—	—	—	—	—
Off-Road Equipment	0.01	0.07	0.09	< 0.005	< 0.005	—	< 0.005	< 0.005	—	< 0.005	—	12.9	12.9	< 0.005	< 0.005	—	12.9
Paving	0.01	—	—	—	—	—	—	—	—	—	—	—	—	—	—	—	—
Onsite truck	0.00	0.00	0.00	0.00	0.00	0.00	0.00	0.00	0.00	0.00	—	0.00	0.00	0.00	0.00	0.00	0.00
Offsite	—	—	—	—	—	—	—	—	—	—	—	—	—	—	—	—	—
Daily, Summer (Max)	—	—	—	—	—	—	—	—	—	—	—	—	—	—	—	—	—
Worker	0.09	0.08	1.44	0.00	0.00	0.26	0.26	0.00	0.06	0.06	—	276	276	0.01	0.01	0.94	280
Vendor	0.00	0.00	0.00	0.00	0.00	0.00	0.00	0.00	0.00	0.00	—	0.00	0.00	0.00	0.00	0.00	0.00
Hauling	0.00	0.00	0.00	0.00	0.00	0.00	0.00	0.00	0.00	0.00	—	0.00	0.00	0.00	0.00	0.00	0.00
Daily, Winter (Max)	—	—	—	—	—	—	—	—	—	—	—	—	—	—	—	—	—
Average Daily	—	—	—	—	—	—	—	—	—	—	—	—	—	—	—	—	—
Worker	< 0.005	0.01	0.07	0.00	0.00	0.01	0.01	0.00	< 0.005	< 0.005	—	14.8	14.8	< 0.005	< 0.005	0.02	15.0
Vendor	0.00	0.00	0.00	0.00	0.00	0.00	0.00	0.00	0.00	0.00	—	0.00	0.00	0.00	0.00	0.00	0.00
Hauling	0.00	0.00	0.00	0.00	0.00	0.00	0.00	0.00	0.00	0.00	—	0.00	0.00	0.00	0.00	0.00	0.00

Annual	—	—	—	—	—	—	—	—	—	—	—	—	—	—	—	—	—
Worker	< 0.005	< 0.005	0.01	0.00	0.00	< 0.005	< 0.005	0.00	< 0.005	< 0.005	—	2.45	2.45	< 0.005	< 0.005	< 0.005	2.48
Vendor	0.00	0.00	0.00	0.00	0.00	0.00	0.00	0.00	0.00	0.00	—	0.00	0.00	0.00	0.00	0.00	0.00
Hauling	0.00	0.00	0.00	0.00	0.00	0.00	0.00	0.00	0.00	0.00	—	0.00	0.00	0.00	0.00	0.00	0.00

3.12. Paving (2026) - Mitigated

Criteria Pollutants (lb/day for daily, ton/yr for annual) and GHGs (lb/day for daily, MT/yr for annual)

Location	ROG	NOx	CO	SO2	PM10E	PM10D	PM10T	PM2.5E	PM2.5D	PM2.5T	BCO2	NBCO2	CO2T	CH4	N2O	R	CO2e
Onsite	—	—	—	—	—	—	—	—	—	—	—	—	—	—	—	—	—
Daily, Summer (Max)	—	—	—	—	—	—	—	—	—	—	—	—	—	—	—	—	—
Off-Road Equipment	0.68	6.23	8.81	0.01	0.26	—	0.26	0.24	—	0.24	—	1,350	1,350	0.05	0.01	—	1,355
Paving	0.50	—	—	—	—	—	—	—	—	—	—	—	—	—	—	—	—
Onsite truck	0.00	0.00	0.00	0.00	0.00	0.00	0.00	0.00	0.00	0.00	—	0.00	0.00	0.00	0.00	0.00	0.00
Daily, Winter (Max)	—	—	—	—	—	—	—	—	—	—	—	—	—	—	—	—	—
Average Daily	—	—	—	—	—	—	—	—	—	—	—	—	—	—	—	—	—
Off-Road Equipment	0.04	0.36	0.51	< 0.005	0.01	—	0.01	0.01	—	0.01	—	77.7	77.7	< 0.005	< 0.005	—	77.9
Paving	0.03	—	—	—	—	—	—	—	—	—	—	—	—	—	—	—	—
Onsite truck	0.00	0.00	0.00	0.00	0.00	0.00	0.00	0.00	0.00	0.00	—	0.00	0.00	0.00	0.00	0.00	0.00
Annual	—	—	—	—	—	—	—	—	—	—	—	—	—	—	—	—	—
Off-Road Equipment	0.01	0.07	0.09	< 0.005	< 0.005	—	< 0.005	< 0.005	—	< 0.005	—	12.9	12.9	< 0.005	< 0.005	—	12.9
Paving	0.01	—	—	—	—	—	—	—	—	—	—	—	—	—	—	—	—

Onsite truck	0.00	0.00	0.00	0.00	0.00	0.00	0.00	0.00	0.00	0.00	—	0.00	0.00	0.00	0.00	0.00	0.00
Offsite	—	—	—	—	—	—	—	—	—	—	—	—	—	—	—	—	—
Daily, Summer (Max)	—	—	—	—	—	—	—	—	—	—	—	—	—	—	—	—	—
Worker	0.09	0.08	1.44	0.00	0.00	0.26	0.26	0.00	0.06	0.06	—	276	276	0.01	0.01	0.94	280
Vendor	0.00	0.00	0.00	0.00	0.00	0.00	0.00	0.00	0.00	0.00	—	0.00	0.00	0.00	0.00	0.00	0.00
Hauling	0.00	0.00	0.00	0.00	0.00	0.00	0.00	0.00	0.00	0.00	—	0.00	0.00	0.00	0.00	0.00	0.00
Daily, Winter (Max)	—	—	—	—	—	—	—	—	—	—	—	—	—	—	—	—	—
Average Daily	—	—	—	—	—	—	—	—	—	—	—	—	—	—	—	—	—
Worker	< 0.005	0.01	0.07	0.00	0.00	0.01	0.01	0.00	< 0.005	< 0.005	—	14.8	14.8	< 0.005	< 0.005	0.02	15.0
Vendor	0.00	0.00	0.00	0.00	0.00	0.00	0.00	0.00	0.00	0.00	—	0.00	0.00	0.00	0.00	0.00	0.00
Hauling	0.00	0.00	0.00	0.00	0.00	0.00	0.00	0.00	0.00	0.00	—	0.00	0.00	0.00	0.00	0.00	0.00
Annual	—	—	—	—	—	—	—	—	—	—	—	—	—	—	—	—	—
Worker	< 0.005	< 0.005	0.01	0.00	0.00	< 0.005	< 0.005	0.00	< 0.005	< 0.005	—	2.45	2.45	< 0.005	< 0.005	< 0.005	2.48
Vendor	0.00	0.00	0.00	0.00	0.00	0.00	0.00	0.00	0.00	0.00	—	0.00	0.00	0.00	0.00	0.00	0.00
Hauling	0.00	0.00	0.00	0.00	0.00	0.00	0.00	0.00	0.00	0.00	—	0.00	0.00	0.00	0.00	0.00	0.00

3.13. Architectural Coating (2026) - Unmitigated

Criteria Pollutants (lb/day for daily, ton/yr for annual) and GHGs (lb/day for daily, MT/yr for annual)

Location	ROG	NOx	CO	SO2	PM10E	PM10D	PM10T	PM2.5E	PM2.5D	PM2.5T	BCO2	NBCO2	CO2T	CH4	N2O	R	CO2e
Onsite	—	—	—	—	—	—	—	—	—	—	—	—	—	—	—	—	—
Daily, Summer (Max)	—	—	—	—	—	—	—	—	—	—	—	—	—	—	—	—	—
Off-Road Equipment	0.12	0.86	1.13	< 0.005	0.02	—	0.02	0.02	—	0.02	—	134	134	0.01	< 0.005	—	134

Architect Coatings	1.11	—	—	—	—	—	—	—	—	—	—	—	—	—	—	—	—
Onsite truck	0.00	0.00	0.00	0.00	0.00	0.00	0.00	0.00	0.00	0.00	—	0.00	0.00	0.00	0.00	0.00	0.00
Daily, Winter (Max)	—	—	—	—	—	—	—	—	—	—	—	—	—	—	—	—	—
Off-Road Equipment	0.12	0.86	1.13	< 0.005	0.02	—	0.02	0.02	—	0.02	—	134	134	0.01	< 0.005	—	134
Architect ural Coatings	1.11	—	—	—	—	—	—	—	—	—	—	—	—	—	—	—	—
Onsite truck	0.00	0.00	0.00	0.00	0.00	0.00	0.00	0.00	0.00	0.00	—	0.00	0.00	0.00	0.00	0.00	0.00
Average Daily	—	—	—	—	—	—	—	—	—	—	—	—	—	—	—	—	—
Off-Road Equipment	0.01	0.05	0.07	< 0.005	< 0.005	—	< 0.005	< 0.005	—	< 0.005	—	8.05	8.05	< 0.005	< 0.005	—	8.07
Architect ural Coatings	0.07	—	—	—	—	—	—	—	—	—	—	—	—	—	—	—	—
Onsite truck	0.00	0.00	0.00	0.00	0.00	0.00	0.00	0.00	0.00	0.00	—	0.00	0.00	0.00	0.00	0.00	0.00
Annual	—	—	—	—	—	—	—	—	—	—	—	—	—	—	—	—	—
Off-Road Equipment	< 0.005	0.01	0.01	< 0.005	< 0.005	—	< 0.005	< 0.005	—	< 0.005	—	1.33	1.33	< 0.005	< 0.005	—	1.34
Architect ural Coatings	0.01	—	—	—	—	—	—	—	—	—	—	—	—	—	—	—	—
Onsite truck	0.00	0.00	0.00	0.00	0.00	0.00	0.00	0.00	0.00	0.00	—	0.00	0.00	0.00	0.00	0.00	0.00
Offsite	—	—	—	—	—	—	—	—	—	—	—	—	—	—	—	—	—
Daily, Summer (Max)	—	—	—	—	—	—	—	—	—	—	—	—	—	—	—	—	—

Worker	0.00	0.00	0.00	0.00	0.00	0.00	0.00	0.00	0.00	0.00	—	0.00	0.00	0.00	0.00	0.00	0.00
Vendor	0.00	0.00	0.00	0.00	0.00	0.00	0.00	0.00	0.00	0.00	—	0.00	0.00	0.00	0.00	0.00	0.00
Hauling	0.00	0.00	0.00	0.00	0.00	0.00	0.00	0.00	0.00	0.00	—	0.00	0.00	0.00	0.00	0.00	0.00
Daily, Winter (Max)	—	—	—	—	—	—	—	—	—	—	—	—	—	—	—	—	—
Worker	0.00	0.00	0.00	0.00	0.00	0.00	0.00	0.00	0.00	0.00	—	0.00	0.00	0.00	0.00	0.00	0.00
Vendor	0.00	0.00	0.00	0.00	0.00	0.00	0.00	0.00	0.00	0.00	—	0.00	0.00	0.00	0.00	0.00	0.00
Hauling	0.00	0.00	0.00	0.00	0.00	0.00	0.00	0.00	0.00	0.00	—	0.00	0.00	0.00	0.00	0.00	0.00
Average Daily	—	—	—	—	—	—	—	—	—	—	—	—	—	—	—	—	—
Worker	0.00	0.00	0.00	0.00	0.00	0.00	0.00	0.00	0.00	0.00	—	0.00	0.00	0.00	0.00	0.00	0.00
Vendor	0.00	0.00	0.00	0.00	0.00	0.00	0.00	0.00	0.00	0.00	—	0.00	0.00	0.00	0.00	0.00	0.00
Hauling	0.00	0.00	0.00	0.00	0.00	0.00	0.00	0.00	0.00	0.00	—	0.00	0.00	0.00	0.00	0.00	0.00
Annual	—	—	—	—	—	—	—	—	—	—	—	—	—	—	—	—	—
Worker	0.00	0.00	0.00	0.00	0.00	0.00	0.00	0.00	0.00	0.00	—	0.00	0.00	0.00	0.00	0.00	0.00
Vendor	0.00	0.00	0.00	0.00	0.00	0.00	0.00	0.00	0.00	0.00	—	0.00	0.00	0.00	0.00	0.00	0.00
Hauling	0.00	0.00	0.00	0.00	0.00	0.00	0.00	0.00	0.00	0.00	—	0.00	0.00	0.00	0.00	0.00	0.00
Annual	—	—	—	—	—	—	—	—	—	—	—	—	—	—	—	—	—
Worker	0.00	0.00	0.00	0.00	0.00	0.00	0.00	0.00	0.00	0.00	—	0.00	0.00	0.00	0.00	0.00	0.00
Vendor	0.00	0.00	0.00	0.00	0.00	0.00	0.00	0.00	0.00	0.00	—	0.00	0.00	0.00	0.00	0.00	0.00
Hauling	0.00	0.00	0.00	0.00	0.00	0.00	0.00	0.00	0.00	0.00	—	0.00	0.00	0.00	0.00	0.00	0.00

3.14. Architectural Coating (2026) - Mitigated

Criteria Pollutants (lb/day for daily, ton/yr for annual) and GHGs (lb/day for daily, MT/yr for annual)

Location	ROG	NOx	CO	SO2	PM10E	PM10D	PM10T	PM2.5E	PM2.5D	PM2.5T	BCO2	NBCO2	CO2T	CH4	N2O	R	CO2e
Onsite	—	—	—	—	—	—	—	—	—	—	—	—	—	—	—	—	—
Daily, Summer (Max)	—	—	—	—	—	—	—	—	—	—	—	—	—	—	—	—	—
Off-Road Equipment	0.12	0.86	1.13	< 0.005	0.02	—	0.02	0.02	—	0.02	—	134	134	0.01	< 0.005	—	134
Architect ural Coatings	1.11	—	—	—	—	—	—	—	—	—	—	—	—	—	—	—	—

Onsite truck	0.00	0.00	0.00	0.00	0.00	0.00	0.00	0.00	0.00	0.00	—	0.00	0.00	0.00	0.00	0.00	0.00
Daily, Winter (Max)	—	—	—	—	—	—	—	—	—	—	—	—	—	—	—	—	—
Off-Road Equipment	0.12	0.86	1.13	< 0.005	0.02	—	0.02	0.02	—	0.02	—	134	134	0.01	< 0.005	—	134
Architectural Coatings	1.11	—	—	—	—	—	—	—	—	—	—	—	—	—	—	—	—
Onsite truck	0.00	0.00	0.00	0.00	0.00	0.00	0.00	0.00	0.00	0.00	—	0.00	0.00	0.00	0.00	0.00	0.00
Average Daily	—	—	—	—	—	—	—	—	—	—	—	—	—	—	—	—	—
Off-Road Equipment	0.01	0.05	0.07	< 0.005	< 0.005	—	< 0.005	< 0.005	—	< 0.005	—	8.05	8.05	< 0.005	< 0.005	—	8.07
Architectural Coatings	0.07	—	—	—	—	—	—	—	—	—	—	—	—	—	—	—	—
Onsite truck	0.00	0.00	0.00	0.00	0.00	0.00	0.00	0.00	0.00	0.00	—	0.00	0.00	0.00	0.00	0.00	0.00
Annual	—	—	—	—	—	—	—	—	—	—	—	—	—	—	—	—	—
Off-Road Equipment	< 0.005	0.01	0.01	< 0.005	< 0.005	—	< 0.005	< 0.005	—	< 0.005	—	1.33	1.33	< 0.005	< 0.005	—	1.34
Architectural Coatings	0.01	—	—	—	—	—	—	—	—	—	—	—	—	—	—	—	—
Onsite truck	0.00	0.00	0.00	0.00	0.00	0.00	0.00	0.00	0.00	0.00	—	0.00	0.00	0.00	0.00	0.00	0.00
Offsite	—	—	—	—	—	—	—	—	—	—	—	—	—	—	—	—	—
Daily, Summer (Max)	—	—	—	—	—	—	—	—	—	—	—	—	—	—	—	—	—
Worker	0.00	0.00	0.00	0.00	0.00	0.00	0.00	0.00	0.00	0.00	—	0.00	0.00	0.00	0.00	0.00	0.00
Vendor	0.00	0.00	0.00	0.00	0.00	0.00	0.00	0.00	0.00	0.00	—	0.00	0.00	0.00	0.00	0.00	0.00

Hauling	0.00	0.00	0.00	0.00	0.00	0.00	0.00	0.00	0.00	0.00	—	0.00	0.00	0.00	0.00	0.00	0.00
Daily, Winter (Max)	—	—	—	—	—	—	—	—	—	—	—	—	—	—	—	—	—
Worker	0.00	0.00	0.00	0.00	0.00	0.00	0.00	0.00	0.00	0.00	—	0.00	0.00	0.00	0.00	0.00	0.00
Vendor	0.00	0.00	0.00	0.00	0.00	0.00	0.00	0.00	0.00	0.00	—	0.00	0.00	0.00	0.00	0.00	0.00
Hauling	0.00	0.00	0.00	0.00	0.00	0.00	0.00	0.00	0.00	0.00	—	0.00	0.00	0.00	0.00	0.00	0.00
Average Daily	—	—	—	—	—	—	—	—	—	—	—	—	—	—	—	—	—
Worker	0.00	0.00	0.00	0.00	0.00	0.00	0.00	0.00	0.00	0.00	—	0.00	0.00	0.00	0.00	0.00	0.00
Vendor	0.00	0.00	0.00	0.00	0.00	0.00	0.00	0.00	0.00	0.00	—	0.00	0.00	0.00	0.00	0.00	0.00
Hauling	0.00	0.00	0.00	0.00	0.00	0.00	0.00	0.00	0.00	0.00	—	0.00	0.00	0.00	0.00	0.00	0.00
Annual	—	—	—	—	—	—	—	—	—	—	—	—	—	—	—	—	—
Worker	0.00	0.00	0.00	0.00	0.00	0.00	0.00	0.00	0.00	0.00	—	0.00	0.00	0.00	0.00	0.00	0.00
Vendor	0.00	0.00	0.00	0.00	0.00	0.00	0.00	0.00	0.00	0.00	—	0.00	0.00	0.00	0.00	0.00	0.00
Hauling	0.00	0.00	0.00	0.00	0.00	0.00	0.00	0.00	0.00	0.00	—	0.00	0.00	0.00	0.00	0.00	0.00

4. Operations Emissions Details

4.1. Mobile Emissions by Land Use

4.1.1. Unmitigated

Criteria Pollutants (lb/day for daily, ton/yr for annual) and GHGs (lb/day for daily, MT/yr for annual)

Land Use	ROG	NOx	CO	SO2	PM10E	PM10D	PM10T	PM2.5E	PM2.5D	PM2.5T	BCO2	NBCO2	CO2T	CH4	N2O	R	CO2e
Daily, Summer (Max)	—	—	—	—	—	—	—	—	—	—	—	—	—	—	—	—	—
Parking Lot	0.00	0.00	0.00	0.00	0.00	0.00	0.00	0.00	0.00	0.00	—	0.00	0.00	0.00	0.00	0.00	0.00
Total	0.00	0.00	0.00	0.00	0.00	0.00	0.00	0.00	0.00	0.00	—	0.00	0.00	0.00	0.00	0.00	0.00

Daily, Winter (Max)	—	—	—	—	—	—	—	—	—	—	—	—	—	—	—	—	—
Parking Lot	0.00	0.00	0.00	0.00	0.00	0.00	0.00	0.00	0.00	0.00	—	0.00	0.00	0.00	0.00	0.00	0.00
Total	0.00	0.00	0.00	0.00	0.00	0.00	0.00	0.00	0.00	0.00	—	0.00	0.00	0.00	0.00	0.00	0.00
Annual	—	—	—	—	—	—	—	—	—	—	—	—	—	—	—	—	—
Parking Lot	0.00	0.00	0.00	0.00	0.00	0.00	0.00	0.00	0.00	0.00	—	0.00	0.00	0.00	0.00	0.00	0.00
Total	0.00	0.00	0.00	0.00	0.00	0.00	0.00	0.00	0.00	0.00	—	0.00	0.00	0.00	0.00	0.00	0.00

4.1.2. Mitigated

Criteria Pollutants (lb/day for daily, ton/yr for annual) and GHGs (lb/day for daily, MT/yr for annual)

Land Use	ROG	NOx	CO	SO2	PM10E	PM10D	PM10T	PM2.5E	PM2.5D	PM2.5T	BCO2	NBCO2	CO2T	CH4	N2O	R	CO2e
Daily, Summer (Max)	—	—	—	—	—	—	—	—	—	—	—	—	—	—	—	—	—
Parking Lot	0.00	0.00	0.00	0.00	0.00	0.00	0.00	0.00	0.00	0.00	—	0.00	0.00	0.00	0.00	0.00	0.00
Total	0.00	0.00	0.00	0.00	0.00	0.00	0.00	0.00	0.00	0.00	—	0.00	0.00	0.00	0.00	0.00	0.00
Daily, Winter (Max)	—	—	—	—	—	—	—	—	—	—	—	—	—	—	—	—	—
Parking Lot	0.00	0.00	0.00	0.00	0.00	0.00	0.00	0.00	0.00	0.00	—	0.00	0.00	0.00	0.00	0.00	0.00
Total	0.00	0.00	0.00	0.00	0.00	0.00	0.00	0.00	0.00	0.00	—	0.00	0.00	0.00	0.00	0.00	0.00
Annual	—	—	—	—	—	—	—	—	—	—	—	—	—	—	—	—	—
Parking Lot	0.00	0.00	0.00	0.00	0.00	0.00	0.00	0.00	0.00	0.00	—	0.00	0.00	0.00	0.00	0.00	0.00
Total	0.00	0.00	0.00	0.00	0.00	0.00	0.00	0.00	0.00	0.00	—	0.00	0.00	0.00	0.00	0.00	0.00

4.2. Energy

4.2.1. Electricity Emissions By Land Use - Unmitigated

Criteria Pollutants (lb/day for daily, ton/yr for annual) and GHGs (lb/day for daily, MT/yr for annual)

Land Use	ROG	NOx	CO	SO2	PM10E	PM10D	PM10T	PM2.5E	PM2.5D	PM2.5T	BCO2	NBCO2	CO2T	CH4	N2O	R	CO2e
Daily, Summer (Max)	—	—	—	—	—	—	—	—	—	—	—	—	—	—	—	—	—
Parking Lot	—	—	—	—	—	—	—	—	—	—	—	146	146	0.01	< 0.005	—	147
Total	—	—	—	—	—	—	—	—	—	—	—	146	146	0.01	< 0.005	—	147
Daily, Winter (Max)	—	—	—	—	—	—	—	—	—	—	—	—	—	—	—	—	—
Parking Lot	—	—	—	—	—	—	—	—	—	—	—	146	146	0.01	< 0.005	—	147
Total	—	—	—	—	—	—	—	—	—	—	—	146	146	0.01	< 0.005	—	147
Annual	—	—	—	—	—	—	—	—	—	—	—	—	—	—	—	—	—
Parking Lot	—	—	—	—	—	—	—	—	—	—	—	24.2	24.2	< 0.005	< 0.005	—	24.3
Total	—	—	—	—	—	—	—	—	—	—	—	24.2	24.2	< 0.005	< 0.005	—	24.3

4.2.2. Electricity Emissions By Land Use - Mitigated

Criteria Pollutants (lb/day for daily, ton/yr for annual) and GHGs (lb/day for daily, MT/yr for annual)

Land Use	ROG	NOx	CO	SO2	PM10E	PM10D	PM10T	PM2.5E	PM2.5D	PM2.5T	BCO2	NBCO2	CO2T	CH4	N2O	R	CO2e
Daily, Summer (Max)	—	—	—	—	—	—	—	—	—	—	—	—	—	—	—	—	—
Parking Lot	—	—	—	—	—	—	—	—	—	—	—	146	146	0.01	< 0.005	—	147

Total	—	—	—	—	—	—	—	—	—	—	—	146	146	0.01	< 0.005	—	147
Daily, Winter (Max)	—	—	—	—	—	—	—	—	—	—	—	—	—	—	—	—	—
Parking Lot	—	—	—	—	—	—	—	—	—	—	—	146	146	0.01	< 0.005	—	147
Total	—	—	—	—	—	—	—	—	—	—	—	146	146	0.01	< 0.005	—	147
Annual	—	—	—	—	—	—	—	—	—	—	—	—	—	—	—	—	—
Parking Lot	—	—	—	—	—	—	—	—	—	—	—	24.2	24.2	< 0.005	< 0.005	—	24.3
Total	—	—	—	—	—	—	—	—	—	—	—	24.2	24.2	< 0.005	< 0.005	—	24.3

4.2.3. Natural Gas Emissions By Land Use - Unmitigated

Criteria Pollutants (lb/day for daily, ton/yr for annual) and GHGs (lb/day for daily, MT/yr for annual)

Land Use	ROG	NOx	CO	SO2	PM10E	PM10D	PM10T	PM2.5E	PM2.5D	PM2.5T	BCO2	NBCO2	CO2T	CH4	N2O	R	CO2e
Daily, Summer (Max)	—	—	—	—	—	—	—	—	—	—	—	—	—	—	—	—	—
Parking Lot	0.00	0.00	0.00	0.00	0.00	—	0.00	0.00	—	0.00	—	0.00	0.00	0.00	0.00	—	0.00
Total	0.00	0.00	0.00	0.00	0.00	—	0.00	0.00	—	0.00	—	0.00	0.00	0.00	0.00	—	0.00
Daily, Winter (Max)	—	—	—	—	—	—	—	—	—	—	—	—	—	—	—	—	—
Parking Lot	0.00	0.00	0.00	0.00	0.00	—	0.00	0.00	—	0.00	—	0.00	0.00	0.00	0.00	—	0.00
Total	0.00	0.00	0.00	0.00	0.00	—	0.00	0.00	—	0.00	—	0.00	0.00	0.00	0.00	—	0.00
Annual	—	—	—	—	—	—	—	—	—	—	—	—	—	—	—	—	—
Parking Lot	0.00	0.00	0.00	0.00	0.00	—	0.00	0.00	—	0.00	—	0.00	0.00	0.00	0.00	—	0.00
Total	0.00	0.00	0.00	0.00	0.00	—	0.00	0.00	—	0.00	—	0.00	0.00	0.00	0.00	—	0.00

4.2.4. Natural Gas Emissions By Land Use - Mitigated

Criteria Pollutants (lb/day for daily, ton/yr for annual) and GHGs (lb/day for daily, MT/yr for annual)

Land Use	ROG	NOx	CO	SO2	PM10E	PM10D	PM10T	PM2.5E	PM2.5D	PM2.5T	BCO2	NBCO2	CO2T	CH4	N2O	R	CO2e
Daily, Summer (Max)	—	—	—	—	—	—	—	—	—	—	—	—	—	—	—	—	—
Parking Lot	0.00	0.00	0.00	0.00	0.00	—	0.00	0.00	—	0.00	—	0.00	0.00	0.00	0.00	—	0.00
Total	0.00	0.00	0.00	0.00	0.00	—	0.00	0.00	—	0.00	—	0.00	0.00	0.00	0.00	—	0.00
Daily, Winter (Max)	—	—	—	—	—	—	—	—	—	—	—	—	—	—	—	—	—
Parking Lot	0.00	0.00	0.00	0.00	0.00	—	0.00	0.00	—	0.00	—	0.00	0.00	0.00	0.00	—	0.00
Total	0.00	0.00	0.00	0.00	0.00	—	0.00	0.00	—	0.00	—	0.00	0.00	0.00	0.00	—	0.00
Annual	—	—	—	—	—	—	—	—	—	—	—	—	—	—	—	—	—
Parking Lot	0.00	0.00	0.00	0.00	0.00	—	0.00	0.00	—	0.00	—	0.00	0.00	0.00	0.00	—	0.00
Total	0.00	0.00	0.00	0.00	0.00	—	0.00	0.00	—	0.00	—	0.00	0.00	0.00	0.00	—	0.00

4.3. Area Emissions by Source

4.3.1. Unmitigated

Criteria Pollutants (lb/day for daily, ton/yr for annual) and GHGs (lb/day for daily, MT/yr for annual)

Source	ROG	NOx	CO	SO2	PM10E	PM10D	PM10T	PM2.5E	PM2.5D	PM2.5T	BCO2	NBCO2	CO2T	CH4	N2O	R	CO2e
Daily, Summer (Max)	—	—	—	—	—	—	—	—	—	—	—	—	—	—	—	—	—
Consumer Products	0.01	—	—	—	—	—	—	—	—	—	—	—	—	—	—	—	—

Architect Coatings	0.01	—	—	—	—	—	—	—	—	—	—	—	—	—	—	—	—
Landscape Equipment	0.00	0.00	0.00	0.00	0.00	—	0.00	0.00	—	0.00	—	0.00	0.00	0.00	0.00	—	0.00
Total	0.02	0.00	0.00	0.00	0.00	—	0.00	0.00	—	0.00	—	0.00	0.00	0.00	0.00	—	0.00
Daily, Winter (Max)	—	—	—	—	—	—	—	—	—	—	—	—	—	—	—	—	—
Consumer Products	0.01	—	—	—	—	—	—	—	—	—	—	—	—	—	—	—	—
Architectural Coatings	0.01	—	—	—	—	—	—	—	—	—	—	—	—	—	—	—	—
Total	0.02	—	—	—	—	—	—	—	—	—	—	—	—	—	—	—	—
Annual	—	—	—	—	—	—	—	—	—	—	—	—	—	—	—	—	—
Consumer Products	< 0.005	—	—	—	—	—	—	—	—	—	—	—	—	—	—	—	—
Architectural Coatings	< 0.005	—	—	—	—	—	—	—	—	—	—	—	—	—	—	—	—
Landscape Equipment	0.00	0.00	0.00	0.00	0.00	—	0.00	0.00	—	0.00	—	0.00	0.00	0.00	0.00	—	0.00
Total	< 0.005	0.00	0.00	0.00	0.00	—	0.00	0.00	—	0.00	—	0.00	0.00	0.00	0.00	—	0.00

4.3.2. Mitigated

Criteria Pollutants (lb/day for daily, ton/yr for annual) and GHGs (lb/day for daily, MT/yr for annual)

Source	ROG	NOx	CO	SO2	PM10E	PM10D	PM10T	PM2.5E	PM2.5D	PM2.5T	BCO2	NBCO2	CO2T	CH4	N2O	R	CO2e
--------	-----	-----	----	-----	-------	-------	-------	--------	--------	--------	------	-------	------	-----	-----	---	------

Daily, Summer (Max)	—	—	—	—	—	—	—	—	—	—	—	—	—	—	—	—	—
Consumer Products	0.01	—	—	—	—	—	—	—	—	—	—	—	—	—	—	—	—
Architectural Coatings	0.01	—	—	—	—	—	—	—	—	—	—	—	—	—	—	—	—
Landscape Equipment	0.00	0.00	0.00	0.00	0.00	—	0.00	0.00	—	0.00	—	0.00	0.00	0.00	0.00	—	0.00
Total	0.02	0.00	0.00	0.00	0.00	—	0.00	0.00	—	0.00	—	0.00	0.00	0.00	0.00	—	0.00
Daily, Winter (Max)	—	—	—	—	—	—	—	—	—	—	—	—	—	—	—	—	—
Consumer Products	0.01	—	—	—	—	—	—	—	—	—	—	—	—	—	—	—	—
Architectural Coatings	0.01	—	—	—	—	—	—	—	—	—	—	—	—	—	—	—	—
Total	0.02	—	—	—	—	—	—	—	—	—	—	—	—	—	—	—	—
Annual	—	—	—	—	—	—	—	—	—	—	—	—	—	—	—	—	—
Consumer Products	< 0.005	—	—	—	—	—	—	—	—	—	—	—	—	—	—	—	—
Architectural Coatings	< 0.005	—	—	—	—	—	—	—	—	—	—	—	—	—	—	—	—
Landscape Equipment	0.00	0.00	0.00	0.00	0.00	—	0.00	0.00	—	0.00	—	0.00	0.00	0.00	0.00	—	0.00
Total	< 0.005	0.00	0.00	0.00	0.00	—	0.00	0.00	—	0.00	—	0.00	0.00	0.00	0.00	—	0.00

4.4. Water Emissions by Land Use

4.4.1. Unmitigated

Criteria Pollutants (lb/day for daily, ton/yr for annual) and GHGs (lb/day for daily, MT/yr for annual)

Land Use	ROG	NOx	CO	SO2	PM10E	PM10D	PM10T	PM2.5E	PM2.5D	PM2.5T	BCO2	NBCO2	CO2T	CH4	N2O	R	CO2e
Daily, Summer (Max)	—	—	—	—	—	—	—	—	—	—	—	—	—	—	—	—	—
Parking Lot	—	—	—	—	—	—	—	—	—	—	0.00	1.80	1.80	< 0.005	< 0.005	—	1.81
Total	—	—	—	—	—	—	—	—	—	—	0.00	1.80	1.80	< 0.005	< 0.005	—	1.81
Daily, Winter (Max)	—	—	—	—	—	—	—	—	—	—	—	—	—	—	—	—	—
Parking Lot	—	—	—	—	—	—	—	—	—	—	0.00	1.80	1.80	< 0.005	< 0.005	—	1.81
Total	—	—	—	—	—	—	—	—	—	—	0.00	1.80	1.80	< 0.005	< 0.005	—	1.81
Annual	—	—	—	—	—	—	—	—	—	—	—	—	—	—	—	—	—
Parking Lot	—	—	—	—	—	—	—	—	—	—	0.00	0.30	0.30	< 0.005	< 0.005	—	0.30
Total	—	—	—	—	—	—	—	—	—	—	0.00	0.30	0.30	< 0.005	< 0.005	—	0.30

4.4.2. Mitigated

Criteria Pollutants (lb/day for daily, ton/yr for annual) and GHGs (lb/day for daily, MT/yr for annual)

Land Use	ROG	NOx	CO	SO2	PM10E	PM10D	PM10T	PM2.5E	PM2.5D	PM2.5T	BCO2	NBCO2	CO2T	CH4	N2O	R	CO2e
Daily, Summer (Max)	—	—	—	—	—	—	—	—	—	—	—	—	—	—	—	—	—
Parking Lot	—	—	—	—	—	—	—	—	—	—	0.00	1.80	1.80	< 0.005	< 0.005	—	1.81

Total	—	—	—	—	—	—	—	—	—	—	0.00	1.80	1.80	< 0.005	< 0.005	—	1.81
Daily, Winter (Max)	—	—	—	—	—	—	—	—	—	—	—	—	—	—	—	—	—
Parking Lot	—	—	—	—	—	—	—	—	—	—	0.00	1.80	1.80	< 0.005	< 0.005	—	1.81
Total	—	—	—	—	—	—	—	—	—	—	0.00	1.80	1.80	< 0.005	< 0.005	—	1.81
Annual	—	—	—	—	—	—	—	—	—	—	—	—	—	—	—	—	—
Parking Lot	—	—	—	—	—	—	—	—	—	—	0.00	0.30	0.30	< 0.005	< 0.005	—	0.30
Total	—	—	—	—	—	—	—	—	—	—	0.00	0.30	0.30	< 0.005	< 0.005	—	0.30

4.5. Waste Emissions by Land Use

4.5.1. Unmitigated

Criteria Pollutants (lb/day for daily, ton/yr for annual) and GHGs (lb/day for daily, MT/yr for annual)

Land Use	ROG	NOx	CO	SO2	PM10E	PM10D	PM10T	PM2.5E	PM2.5D	PM2.5T	BCO2	NBCO2	CO2T	CH4	N2O	R	CO2e
Daily, Summer (Max)	—	—	—	—	—	—	—	—	—	—	—	—	—	—	—	—	—
Parking Lot	—	—	—	—	—	—	—	—	—	—	0.00	0.00	0.00	0.00	0.00	—	0.00
Total	—	—	—	—	—	—	—	—	—	—	0.00	0.00	0.00	0.00	0.00	—	0.00
Daily, Winter (Max)	—	—	—	—	—	—	—	—	—	—	—	—	—	—	—	—	—
Parking Lot	—	—	—	—	—	—	—	—	—	—	0.00	0.00	0.00	0.00	0.00	—	0.00
Total	—	—	—	—	—	—	—	—	—	—	0.00	0.00	0.00	0.00	0.00	—	0.00
Annual	—	—	—	—	—	—	—	—	—	—	—	—	—	—	—	—	—
Parking Lot	—	—	—	—	—	—	—	—	—	—	0.00	0.00	0.00	0.00	0.00	—	0.00

Total	—	—	—	—	—	—	—	—	—	—	0.00	0.00	0.00	0.00	0.00	—	0.00
-------	---	---	---	---	---	---	---	---	---	---	------	------	------	------	------	---	------

4.5.2. Mitigated

Criteria Pollutants (lb/day for daily, ton/yr for annual) and GHGs (lb/day for daily, MT/yr for annual)

Land Use	ROG	NOx	CO	SO2	PM10E	PM10D	PM10T	PM2.5E	PM2.5D	PM2.5T	BCO2	NBCO2	CO2T	CH4	N2O	R	CO2e
Daily, Summer (Max)	—	—	—	—	—	—	—	—	—	—	—	—	—	—	—	—	—
Parking Lot	—	—	—	—	—	—	—	—	—	—	0.00	0.00	0.00	0.00	0.00	—	0.00
Total	—	—	—	—	—	—	—	—	—	—	0.00	0.00	0.00	0.00	0.00	—	0.00
Daily, Winter (Max)	—	—	—	—	—	—	—	—	—	—	—	—	—	—	—	—	—
Parking Lot	—	—	—	—	—	—	—	—	—	—	0.00	0.00	0.00	0.00	0.00	—	0.00
Total	—	—	—	—	—	—	—	—	—	—	0.00	0.00	0.00	0.00	0.00	—	0.00
Annual	—	—	—	—	—	—	—	—	—	—	—	—	—	—	—	—	—
Parking Lot	—	—	—	—	—	—	—	—	—	—	0.00	0.00	0.00	0.00	0.00	—	0.00
Total	—	—	—	—	—	—	—	—	—	—	0.00	0.00	0.00	0.00	0.00	—	0.00

4.6. Refrigerant Emissions by Land Use

4.6.1. Unmitigated

Criteria Pollutants (lb/day for daily, ton/yr for annual) and GHGs (lb/day for daily, MT/yr for annual)

Land Use	ROG	NOx	CO	SO2	PM10E	PM10D	PM10T	PM2.5E	PM2.5D	PM2.5T	BCO2	NBCO2	CO2T	CH4	N2O	R	CO2e
Daily, Summer (Max)	—	—	—	—	—	—	—	—	—	—	—	—	—	—	—	—	—

Total	—	—	—	—	—	—	—	—	—	—	—	—	—	—	—	—	—
Daily, Winter (Max)	—	—	—	—	—	—	—	—	—	—	—	—	—	—	—	—	—
Total	—	—	—	—	—	—	—	—	—	—	—	—	—	—	—	—	—
Annual	—	—	—	—	—	—	—	—	—	—	—	—	—	—	—	—	—
Total	—	—	—	—	—	—	—	—	—	—	—	—	—	—	—	—	—

4.6.2. Mitigated

Criteria Pollutants (lb/day for daily, ton/yr for annual) and GHGs (lb/day for daily, MT/yr for annual)

Land Use	ROG	NOx	CO	SO2	PM10E	PM10D	PM10T	PM2.5E	PM2.5D	PM2.5T	BCO2	NBCO2	CO2T	CH4	N2O	R	CO2e
Daily, Summer (Max)	—	—	—	—	—	—	—	—	—	—	—	—	—	—	—	—	—
Total	—	—	—	—	—	—	—	—	—	—	—	—	—	—	—	—	—
Daily, Winter (Max)	—	—	—	—	—	—	—	—	—	—	—	—	—	—	—	—	—
Total	—	—	—	—	—	—	—	—	—	—	—	—	—	—	—	—	—
Annual	—	—	—	—	—	—	—	—	—	—	—	—	—	—	—	—	—
Total	—	—	—	—	—	—	—	—	—	—	—	—	—	—	—	—	—

4.7. Offroad Emissions By Equipment Type

4.7.1. Unmitigated

Criteria Pollutants (lb/day for daily, ton/yr for annual) and GHGs (lb/day for daily, MT/yr for annual)

Equipment Type	ROG	NOx	CO	SO2	PM10E	PM10D	PM10T	PM2.5E	PM2.5D	PM2.5T	BCO2	NBCO2	CO2T	CH4	N2O	R	CO2e
----------------	-----	-----	----	-----	-------	-------	-------	--------	--------	--------	------	-------	------	-----	-----	---	------

Daily, Summer (Max)	—	—	—	—	—	—	—	—	—	—	—	—	—	—	—	—	—
Total	—	—	—	—	—	—	—	—	—	—	—	—	—	—	—	—	—
Daily, Winter (Max)	—	—	—	—	—	—	—	—	—	—	—	—	—	—	—	—	—
Total	—	—	—	—	—	—	—	—	—	—	—	—	—	—	—	—	—
Annual	—	—	—	—	—	—	—	—	—	—	—	—	—	—	—	—	—
Total	—	—	—	—	—	—	—	—	—	—	—	—	—	—	—	—	—

4.7.2. Mitigated

Criteria Pollutants (lb/day for daily, ton/yr for annual) and GHGs (lb/day for daily, MT/yr for annual)

Equipment Type	ROG	NOx	CO	SO2	PM10E	PM10D	PM10T	PM2.5E	PM2.5D	PM2.5T	BCO2	NBCO2	CO2T	CH4	N2O	R	CO2e
Daily, Summer (Max)	—	—	—	—	—	—	—	—	—	—	—	—	—	—	—	—	—
Total	—	—	—	—	—	—	—	—	—	—	—	—	—	—	—	—	—
Daily, Winter (Max)	—	—	—	—	—	—	—	—	—	—	—	—	—	—	—	—	—
Total	—	—	—	—	—	—	—	—	—	—	—	—	—	—	—	—	—
Annual	—	—	—	—	—	—	—	—	—	—	—	—	—	—	—	—	—
Total	—	—	—	—	—	—	—	—	—	—	—	—	—	—	—	—	—

4.8. Stationary Emissions By Equipment Type

4.8.1. Unmitigated

Criteria Pollutants (lb/day for daily, ton/yr for annual) and GHGs (lb/day for daily, MT/yr for annual)

Equipment	ROG	NOx	CO	SO2	PM10E	PM10D	PM10T	PM2.5E	PM2.5D	PM2.5T	BCO2	NBCO2	CO2T	CH4	N2O	R	CO2e
Daily, Summer (Max)	—	—	—	—	—	—	—	—	—	—	—	—	—	—	—	—	—
Total	—	—	—	—	—	—	—	—	—	—	—	—	—	—	—	—	—
Daily, Winter (Max)	—	—	—	—	—	—	—	—	—	—	—	—	—	—	—	—	—
Total	—	—	—	—	—	—	—	—	—	—	—	—	—	—	—	—	—
Annual	—	—	—	—	—	—	—	—	—	—	—	—	—	—	—	—	—
Total	—	—	—	—	—	—	—	—	—	—	—	—	—	—	—	—	—

4.8.2. Mitigated

Criteria Pollutants (lb/day for daily, ton/yr for annual) and GHGs (lb/day for daily, MT/yr for annual)

Equipment Type	ROG	NOx	CO	SO2	PM10E	PM10D	PM10T	PM2.5E	PM2.5D	PM2.5T	BCO2	NBCO2	CO2T	CH4	N2O	R	CO2e
Daily, Summer (Max)	—	—	—	—	—	—	—	—	—	—	—	—	—	—	—	—	—
Total	—	—	—	—	—	—	—	—	—	—	—	—	—	—	—	—	—
Daily, Winter (Max)	—	—	—	—	—	—	—	—	—	—	—	—	—	—	—	—	—
Total	—	—	—	—	—	—	—	—	—	—	—	—	—	—	—	—	—
Annual	—	—	—	—	—	—	—	—	—	—	—	—	—	—	—	—	—
Total	—	—	—	—	—	—	—	—	—	—	—	—	—	—	—	—	—

4.9. User Defined Emissions By Equipment Type

4.9.1. Unmitigated

Criteria Pollutants (lb/day for daily, ton/yr for annual) and GHGs (lb/day for daily, MT/yr for annual)

Equipment Type	ROG	NOx	CO	SO2	PM10E	PM10D	PM10T	PM2.5E	PM2.5D	PM2.5T	BCO2	NBCO2	CO2T	CH4	N2O	R	CO2e
Daily, Summer (Max)	—	—	—	—	—	—	—	—	—	—	—	—	—	—	—	—	—
Total	—	—	—	—	—	—	—	—	—	—	—	—	—	—	—	—	—
Daily, Winter (Max)	—	—	—	—	—	—	—	—	—	—	—	—	—	—	—	—	—
Total	—	—	—	—	—	—	—	—	—	—	—	—	—	—	—	—	—
Annual	—	—	—	—	—	—	—	—	—	—	—	—	—	—	—	—	—
Total	—	—	—	—	—	—	—	—	—	—	—	—	—	—	—	—	—

4.9.2. Mitigated

Criteria Pollutants (lb/day for daily, ton/yr for annual) and GHGs (lb/day for daily, MT/yr for annual)

Equipment Type	ROG	NOx	CO	SO2	PM10E	PM10D	PM10T	PM2.5E	PM2.5D	PM2.5T	BCO2	NBCO2	CO2T	CH4	N2O	R	CO2e
Daily, Summer (Max)	—	—	—	—	—	—	—	—	—	—	—	—	—	—	—	—	—
Total	—	—	—	—	—	—	—	—	—	—	—	—	—	—	—	—	—
Daily, Winter (Max)	—	—	—	—	—	—	—	—	—	—	—	—	—	—	—	—	—
Total	—	—	—	—	—	—	—	—	—	—	—	—	—	—	—	—	—
Annual	—	—	—	—	—	—	—	—	—	—	—	—	—	—	—	—	—
Total	—	—	—	—	—	—	—	—	—	—	—	—	—	—	—	—	—

4.10. Soil Carbon Accumulation By Vegetation Type

4.10.1. Soil Carbon Accumulation By Vegetation Type - Unmitigated

Criteria Pollutants (lb/day for daily, ton/yr for annual) and GHGs (lb/day for daily, MT/yr for annual)

Vegetation	ROG	NOx	CO	SO2	PM10E	PM10D	PM10T	PM2.5E	PM2.5D	PM2.5T	BCO2	NBCO2	CO2T	CH4	N2O	R	CO2e
Daily, Summer (Max)	—	—	—	—	—	—	—	—	—	—	—	—	—	—	—	—	—
Total	—	—	—	—	—	—	—	—	—	—	—	—	—	—	—	—	—
Daily, Winter (Max)	—	—	—	—	—	—	—	—	—	—	—	—	—	—	—	—	—
Total	—	—	—	—	—	—	—	—	—	—	—	—	—	—	—	—	—
Annual	—	—	—	—	—	—	—	—	—	—	—	—	—	—	—	—	—
Total	—	—	—	—	—	—	—	—	—	—	—	—	—	—	—	—	—

4.10.2. Above and Belowground Carbon Accumulation by Land Use Type - Unmitigated

Criteria Pollutants (lb/day for daily, ton/yr for annual) and GHGs (lb/day for daily, MT/yr for annual)

Land Use	ROG	NOx	CO	SO2	PM10E	PM10D	PM10T	PM2.5E	PM2.5D	PM2.5T	BCO2	NBCO2	CO2T	CH4	N2O	R	CO2e
Daily, Summer (Max)	—	—	—	—	—	—	—	—	—	—	—	—	—	—	—	—	—
Total	—	—	—	—	—	—	—	—	—	—	—	—	—	—	—	—	—
Daily, Winter (Max)	—	—	—	—	—	—	—	—	—	—	—	—	—	—	—	—	—
Total	—	—	—	—	—	—	—	—	—	—	—	—	—	—	—	—	—
Annual	—	—	—	—	—	—	—	—	—	—	—	—	—	—	—	—	—
Total	—	—	—	—	—	—	—	—	—	—	—	—	—	—	—	—	—

4.10.3. Avoided and Sequestered Emissions by Species - Unmitigated

Criteria Pollutants (lb/day for daily, ton/yr for annual) and GHGs (lb/day for daily, MT/yr for annual)

Species	ROG	NOx	CO	SO2	PM10E	PM10D	PM10T	PM2.5E	PM2.5D	PM2.5T	BCO2	NBCO2	CO2T	CH4	N2O	R	CO2e
Daily, Summer (Max)	—	—	—	—	—	—	—	—	—	—	—	—	—	—	—	—	—
Avoided	—	—	—	—	—	—	—	—	—	—	—	—	—	—	—	—	—
Subtotal	—	—	—	—	—	—	—	—	—	—	—	—	—	—	—	—	—
Sequestered	—	—	—	—	—	—	—	—	—	—	—	—	—	—	—	—	—
Subtotal	—	—	—	—	—	—	—	—	—	—	—	—	—	—	—	—	—
Removed	—	—	—	—	—	—	—	—	—	—	—	—	—	—	—	—	—
Subtotal	—	—	—	—	—	—	—	—	—	—	—	—	—	—	—	—	—
—	—	—	—	—	—	—	—	—	—	—	—	—	—	—	—	—	—
Daily, Winter (Max)	—	—	—	—	—	—	—	—	—	—	—	—	—	—	—	—	—
Avoided	—	—	—	—	—	—	—	—	—	—	—	—	—	—	—	—	—
Subtotal	—	—	—	—	—	—	—	—	—	—	—	—	—	—	—	—	—
Sequestered	—	—	—	—	—	—	—	—	—	—	—	—	—	—	—	—	—
Subtotal	—	—	—	—	—	—	—	—	—	—	—	—	—	—	—	—	—
Removed	—	—	—	—	—	—	—	—	—	—	—	—	—	—	—	—	—
Subtotal	—	—	—	—	—	—	—	—	—	—	—	—	—	—	—	—	—
—	—	—	—	—	—	—	—	—	—	—	—	—	—	—	—	—	—
Annual	—	—	—	—	—	—	—	—	—	—	—	—	—	—	—	—	—
Avoided	—	—	—	—	—	—	—	—	—	—	—	—	—	—	—	—	—
Subtotal	—	—	—	—	—	—	—	—	—	—	—	—	—	—	—	—	—
Sequestered	—	—	—	—	—	—	—	—	—	—	—	—	—	—	—	—	—
Subtotal	—	—	—	—	—	—	—	—	—	—	—	—	—	—	—	—	—

Remove	—	—	—	—	—	—	—	—	—	—	—	—	—	—	—	—	—
Subtotal	—	—	—	—	—	—	—	—	—	—	—	—	—	—	—	—	—
—	—	—	—	—	—	—	—	—	—	—	—	—	—	—	—	—	—

4.10.4. Soil Carbon Accumulation By Vegetation Type - Mitigated

Criteria Pollutants (lb/day for daily, ton/yr for annual) and GHGs (lb/day for daily, MT/yr for annual)

Vegetation	ROG	NOx	CO	SO2	PM10E	PM10D	PM10T	PM2.5E	PM2.5D	PM2.5T	BCO2	NBCO2	CO2T	CH4	N2O	R	CO2e
Daily, Summer (Max)	—	—	—	—	—	—	—	—	—	—	—	—	—	—	—	—	—
Total	—	—	—	—	—	—	—	—	—	—	—	—	—	—	—	—	—
Daily, Winter (Max)	—	—	—	—	—	—	—	—	—	—	—	—	—	—	—	—	—
Total	—	—	—	—	—	—	—	—	—	—	—	—	—	—	—	—	—
Annual	—	—	—	—	—	—	—	—	—	—	—	—	—	—	—	—	—
Total	—	—	—	—	—	—	—	—	—	—	—	—	—	—	—	—	—

4.10.5. Above and Belowground Carbon Accumulation by Land Use Type - Mitigated

Criteria Pollutants (lb/day for daily, ton/yr for annual) and GHGs (lb/day for daily, MT/yr for annual)

Land Use	ROG	NOx	CO	SO2	PM10E	PM10D	PM10T	PM2.5E	PM2.5D	PM2.5T	BCO2	NBCO2	CO2T	CH4	N2O	R	CO2e
Daily, Summer (Max)	—	—	—	—	—	—	—	—	—	—	—	—	—	—	—	—	—
Total	—	—	—	—	—	—	—	—	—	—	—	—	—	—	—	—	—
Daily, Winter (Max)	—	—	—	—	—	—	—	—	—	—	—	—	—	—	—	—	—
Total	—	—	—	—	—	—	—	—	—	—	—	—	—	—	—	—	—
Annual	—	—	—	—	—	—	—	—	—	—	—	—	—	—	—	—	—

Total	—	—	—	—	—	—	—	—	—	—	—	—	—	—	—	—	—
-------	---	---	---	---	---	---	---	---	---	---	---	---	---	---	---	---	---

4.10.6. Avoided and Sequestered Emissions by Species - Mitigated

Criteria Pollutants (lb/day for daily, ton/yr for annual) and GHGs (lb/day for daily, MT/yr for annual)

Species	ROG	NOx	CO	SO2	PM10E	PM10D	PM10T	PM2.5E	PM2.5D	PM2.5T	BCO2	NBCO2	CO2T	CH4	N2O	R	CO2e
Daily, Summer (Max)	—	—	—	—	—	—	—	—	—	—	—	—	—	—	—	—	—
Avoided	—	—	—	—	—	—	—	—	—	—	—	—	—	—	—	—	—
Subtotal	—	—	—	—	—	—	—	—	—	—	—	—	—	—	—	—	—
Sequestered	—	—	—	—	—	—	—	—	—	—	—	—	—	—	—	—	—
Subtotal	—	—	—	—	—	—	—	—	—	—	—	—	—	—	—	—	—
Removed	—	—	—	—	—	—	—	—	—	—	—	—	—	—	—	—	—
Subtotal	—	—	—	—	—	—	—	—	—	—	—	—	—	—	—	—	—
—	—	—	—	—	—	—	—	—	—	—	—	—	—	—	—	—	—
Daily, Winter (Max)	—	—	—	—	—	—	—	—	—	—	—	—	—	—	—	—	—
Avoided	—	—	—	—	—	—	—	—	—	—	—	—	—	—	—	—	—
Subtotal	—	—	—	—	—	—	—	—	—	—	—	—	—	—	—	—	—
Sequestered	—	—	—	—	—	—	—	—	—	—	—	—	—	—	—	—	—
Subtotal	—	—	—	—	—	—	—	—	—	—	—	—	—	—	—	—	—
Removed	—	—	—	—	—	—	—	—	—	—	—	—	—	—	—	—	—
Subtotal	—	—	—	—	—	—	—	—	—	—	—	—	—	—	—	—	—
—	—	—	—	—	—	—	—	—	—	—	—	—	—	—	—	—	—
Annual	—	—	—	—	—	—	—	—	—	—	—	—	—	—	—	—	—
Avoided	—	—	—	—	—	—	—	—	—	—	—	—	—	—	—	—	—

Subtotal	—	—	—	—	—	—	—	—	—	—	—	—	—	—	—	—	—
Sequestered	—	—	—	—	—	—	—	—	—	—	—	—	—	—	—	—	—
Subtotal	—	—	—	—	—	—	—	—	—	—	—	—	—	—	—	—	—
Removed	—	—	—	—	—	—	—	—	—	—	—	—	—	—	—	—	—
Subtotal	—	—	—	—	—	—	—	—	—	—	—	—	—	—	—	—	—
—	—	—	—	—	—	—	—	—	—	—	—	—	—	—	—	—	—

5. Activity Data

5.1. Construction Schedule

Phase Name	Phase Type	Start Date	End Date	Days Per Week	Work Days per Phase	Phase Description
Demolition	Demolition	11/3/2025	12/1/2025	5.00	20.0	—
Site Preparation	Site Preparation	12/2/2025	12/9/2025	5.00	5.00	—
Grading	Grading	12/10/2025	1/15/2026	5.00	27.0	—
Building Construction	Building Construction	1/16/2026	3/2/2026	5.00	32.0	Infrastructure improvements
Paving	Paving	4/2/2026	4/30/2026	5.00	21.0	—
Architectural Coating	Architectural Coating	3/3/2026	4/1/2026	5.00	22.0	—

5.2. Off-Road Equipment

5.2.1. Unmitigated

Phase Name	Equipment Type	Fuel Type	Engine Tier	Number per Day	Hours Per Day	Horsepower	Load Factor
Demolition	Concrete/Industrial Saws	Diesel	Average	1.00	8.00	33.0	0.73
Demolition	Excavators	Diesel	Average	3.00	8.00	36.0	0.38
Demolition	Rubber Tired Dozers	Diesel	Average	2.00	8.00	367	0.40

Site Preparation	Rubber Tired Dozers	Diesel	Average	3.00	8.00	367	0.40
Site Preparation	Tractors/Loaders/Back hoes	Diesel	Average	4.00	8.00	84.0	0.37
Grading	Excavators	Diesel	Average	1.00	8.00	36.0	0.38
Grading	Graders	Diesel	Average	1.00	8.00	148	0.41
Grading	Rubber Tired Dozers	Diesel	Average	1.00	8.00	367	0.40
Grading	Tractors/Loaders/Back hoes	Diesel	Average	3.00	8.00	84.0	0.37
Building Construction	Cranes	Diesel	Average	1.00	7.00	367	0.29
Building Construction	Forklifts	Diesel	Average	3.00	8.00	82.0	0.20
Building Construction	Generator Sets	Diesel	Average	1.00	8.00	14.0	0.74
Building Construction	Tractors/Loaders/Back hoes	Diesel	Average	3.00	7.00	84.0	0.37
Building Construction	Welders	Diesel	Average	1.00	8.00	46.0	0.45
Paving	Cement and Mortar Mixers	Diesel	Average	2.00	6.00	10.0	0.56
Paving	Pavers	Diesel	Average	1.00	8.00	81.0	0.42
Paving	Paving Equipment	Diesel	Average	2.00	6.00	89.0	0.36
Paving	Rollers	Diesel	Average	2.00	6.00	36.0	0.38
Paving	Tractors/Loaders/Back hoes	Diesel	Average	1.00	8.00	84.0	0.37
Architectural Coating	Air Compressors	Diesel	Average	1.00	6.00	37.0	0.48

5.2.2. Mitigated

Phase Name	Equipment Type	Fuel Type	Engine Tier	Number per Day	Hours Per Day	Horsepower	Load Factor
Demolition	Concrete/Industrial Saws	Diesel	Average	1.00	8.00	33.0	0.73
Demolition	Excavators	Diesel	Average	3.00	8.00	36.0	0.38
Demolition	Rubber Tired Dozers	Diesel	Average	2.00	8.00	367	0.40
Site Preparation	Rubber Tired Dozers	Diesel	Average	3.00	8.00	367	0.40

Site Preparation	Tractors/Loaders/Back	Diesel	Average	4.00	8.00	84.0	0.37
Grading	Excavators	Diesel	Average	1.00	8.00	36.0	0.38
Grading	Graders	Diesel	Average	1.00	8.00	148	0.41
Grading	Rubber Tired Dozers	Diesel	Average	1.00	8.00	367	0.40
Grading	Tractors/Loaders/Back hoes	Diesel	Average	3.00	8.00	84.0	0.37
Building Construction	Cranes	Diesel	Average	1.00	7.00	367	0.29
Building Construction	Forklifts	Diesel	Average	3.00	8.00	82.0	0.20
Building Construction	Generator Sets	Diesel	Average	1.00	8.00	14.0	0.74
Building Construction	Tractors/Loaders/Back hoes	Diesel	Average	3.00	7.00	84.0	0.37
Building Construction	Welders	Diesel	Average	1.00	8.00	46.0	0.45
Paving	Cement and Mortar Mixers	Diesel	Average	2.00	6.00	10.0	0.56
Paving	Pavers	Diesel	Average	1.00	8.00	81.0	0.42
Paving	Paving Equipment	Diesel	Average	2.00	6.00	89.0	0.36
Paving	Rollers	Diesel	Average	2.00	6.00	36.0	0.38
Paving	Tractors/Loaders/Back hoes	Diesel	Average	1.00	8.00	84.0	0.37
Architectural Coating	Air Compressors	Diesel	Average	1.00	6.00	37.0	0.48

5.3. Construction Vehicles

5.3.1. Unmitigated

Phase Name	Trip Type	One-Way Trips per Day	Miles per Trip	Vehicle Mix
Demolition	—	—	—	—
Demolition	Worker	15.0	18.5	LDA,LDT1,LDT2
Demolition	Vendor	—	10.2	HHDT,MHDT
Demolition	Hauling	26.3	3.00	HHDT
Demolition	Onsite truck	—	—	HHDT

Site Preparation	—	—	—	—
Site Preparation	Worker	17.5	18.5	LDA,LDT1,LDT2
Site Preparation	Vendor	—	10.2	HHDT,MHDT
Site Preparation	Hauling	0.00	20.0	HHDT
Site Preparation	Onsite truck	—	—	HHDT
Grading	—	—	—	—
Grading	Worker	15.0	18.5	LDA,LDT1,LDT2
Grading	Vendor	—	10.2	HHDT,MHDT
Grading	Hauling	0.00	20.0	HHDT
Grading	Onsite truck	—	—	HHDT
Building Construction	—	—	—	—
Building Construction	Worker	0.00	18.5	LDA,LDT1,LDT2
Building Construction	Vendor	0.00	10.2	HHDT,MHDT
Building Construction	Hauling	0.00	20.0	HHDT
Building Construction	Onsite truck	—	—	HHDT
Paving	—	—	—	—
Paving	Worker	20.0	18.5	LDA,LDT1,LDT2
Paving	Vendor	—	10.2	HHDT,MHDT
Paving	Hauling	0.00	20.0	HHDT
Paving	Onsite truck	—	—	HHDT
Architectural Coating	—	—	—	—
Architectural Coating	Worker	0.00	18.5	LDA,LDT1,LDT2
Architectural Coating	Vendor	—	10.2	HHDT,MHDT
Architectural Coating	Hauling	0.00	20.0	HHDT
Architectural Coating	Onsite truck	—	—	HHDT

5.3.2. Mitigated

Phase Name	Trip Type	One-Way Trips per Day	Miles per Trip	Vehicle Mix
------------	-----------	-----------------------	----------------	-------------

Demolition	—	—	—	—
Demolition	Worker	15.0	18.5	LDA,LDT1,LDT2
Demolition	Vendor	—	10.2	HHDT,MHDT
Demolition	Hauling	26.3	3.00	HHDT
Demolition	Onsite truck	—	—	HHDT
Site Preparation	—	—	—	—
Site Preparation	Worker	17.5	18.5	LDA,LDT1,LDT2
Site Preparation	Vendor	—	10.2	HHDT,MHDT
Site Preparation	Hauling	0.00	20.0	HHDT
Site Preparation	Onsite truck	—	—	HHDT
Grading	—	—	—	—
Grading	Worker	15.0	18.5	LDA,LDT1,LDT2
Grading	Vendor	—	10.2	HHDT,MHDT
Grading	Hauling	0.00	20.0	HHDT
Grading	Onsite truck	—	—	HHDT
Building Construction	—	—	—	—
Building Construction	Worker	0.00	18.5	LDA,LDT1,LDT2
Building Construction	Vendor	0.00	10.2	HHDT,MHDT
Building Construction	Hauling	0.00	20.0	HHDT
Building Construction	Onsite truck	—	—	HHDT
Paving	—	—	—	—
Paving	Worker	20.0	18.5	LDA,LDT1,LDT2
Paving	Vendor	—	10.2	HHDT,MHDT
Paving	Hauling	0.00	20.0	HHDT
Paving	Onsite truck	—	—	HHDT
Architectural Coating	—	—	—	—
Architectural Coating	Worker	0.00	18.5	LDA,LDT1,LDT2
Architectural Coating	Vendor	—	10.2	HHDT,MHDT

Architectural Coating	Hauling	0.00	20.0	HHDT
Architectural Coating	Onsite truck	—	—	HHDT

5.4. Vehicles

5.4.1. Construction Vehicle Control Strategies

Non-applicable. No control strategies activated by user.

5.5. Architectural Coatings

Phase Name	Residential Interior Area Coated (sq ft)	Residential Exterior Area Coated (sq ft)	Non-Residential Interior Area Coated (sq ft)	Non-Residential Exterior Area Coated (sq ft)	Parking Area Coated (sq ft)
Architectural Coating	0.00	0.00	0.00	0.00	10,559

5.6. Dust Mitigation

5.6.1. Construction Earthmoving Activities

Phase Name	Material Imported (Cubic Yards)	Material Exported (Cubic Yards)	Acres Graded (acres)	Material Demolished (Ton of Debris)	Acres Paved (acres)
Demolition	0.00	0.00	0.00	2,100	—
Site Preparation	0.00	0.00	7.50	0.00	—
Grading	0.00	0.00	27.0	0.00	—
Paving	0.00	0.00	0.00	0.00	4.04

5.6.2. Construction Earthmoving Control Strategies

Non-applicable. No control strategies activated by user.

5.7. Construction Paving

Land Use	Area Paved (acres)	% Asphalt
Parking Lot	4.04	100%

5.8. Construction Electricity Consumption and Emissions Factors

kWh per Year and Emission Factor (lb/MWh)

Year	kWh per Year	CO2	CH4	N2O
2025	0.00	349	0.03	< 0.005
2026	0.00	346	0.03	< 0.005

5.9. Operational Mobile Sources

5.9.1. Unmitigated

Land Use Type	Trips/Weekday	Trips/Saturday	Trips/Sunday	Trips/Year	VMt/Weekday	VMt/Saturday	VMt/Sunday	VMt/Year
Parking Lot	0.00	0.00	0.00	0.00	0.00	0.00	0.00	0.00

5.9.2. Mitigated

Land Use Type	Trips/Weekday	Trips/Saturday	Trips/Sunday	Trips/Year	VMt/Weekday	VMt/Saturday	VMt/Sunday	VMt/Year
Parking Lot	0.00	0.00	0.00	0.00	0.00	0.00	0.00	0.00

5.10. Operational Area Sources

5.10.1. Hearths

5.10.1.1. Unmitigated

5.10.1.2. Mitigated

5.10.2. Architectural Coatings

Residential Interior Area Coated (sq ft)	Residential Exterior Area Coated (sq ft)	Non-Residential Interior Area Coated (sq ft)	Non-Residential Exterior Area Coated (sq ft)	Parking Area Coated (sq ft)
0	0.00	0.00	0.00	10,559

5.10.3. Landscape Equipment

Season	Unit	Value
Snow Days	day/yr	0.00
Summer Days	day/yr	250

5.10.4. Landscape Equipment - Mitigated

Season	Unit	Value
Snow Days	day/yr	0.00
Summer Days	day/yr	250

5.11. Operational Energy Consumption

5.11.1. Unmitigated

Electricity (kWh/yr) and CO2 and CH4 and N2O and Natural Gas (kBTU/yr)

Land Use	Electricity (kWh/yr)	CO2	CH4	N2O	Natural Gas (kBTU/yr)
Parking Lot	154,161	346	0.0330	0.0040	0.00

5.11.2. Mitigated

Electricity (kWh/yr) and CO2 and CH4 and N2O and Natural Gas (kBTU/yr)

Land Use	Electricity (kWh/yr)	CO2	CH4	N2O	Natural Gas (kBTU/yr)
Parking Lot	154,161	346	0.0330	0.0040	0.00

5.12. Operational Water and Wastewater Consumption

5.12.1. Unmitigated

Land Use	Indoor Water (gal/year)	Outdoor Water (gal/year)
Parking Lot	0.00	357,444

5.12.2. Mitigated

Land Use	Indoor Water (gal/year)	Outdoor Water (gal/year)
Parking Lot	0.00	357,444

5.13. Operational Waste Generation

5.13.1. Unmitigated

Land Use	Waste (ton/year)	Cogeneration (kWh/year)
Parking Lot	0.00	—

5.13.2. Mitigated

Land Use	Waste (ton/year)	Cogeneration (kWh/year)
Parking Lot	0.00	—

5.14. Operational Refrigeration and Air Conditioning Equipment

5.14.1. Unmitigated

Land Use Type	Equipment Type	Refrigerant	GWP	Quantity (kg)	Operations Leak Rate	Service Leak Rate	Times Serviced
---------------	----------------	-------------	-----	---------------	----------------------	-------------------	----------------

5.14.2. Mitigated

Land Use Type	Equipment Type	Refrigerant	GWP	Quantity (kg)	Operations Leak Rate	Service Leak Rate	Times Serviced
---------------	----------------	-------------	-----	---------------	----------------------	-------------------	----------------

5.15. Operational Off-Road Equipment

5.15.1. Unmitigated

Equipment Type	Fuel Type	Engine Tier	Number per Day	Hours Per Day	Horsepower	Load Factor
----------------	-----------	-------------	----------------	---------------	------------	-------------

5.15.2. Mitigated

Equipment Type	Fuel Type	Engine Tier	Number per Day	Hours Per Day	Horsepower	Load Factor
----------------	-----------	-------------	----------------	---------------	------------	-------------

5.16. Stationary Sources

5.16.1. Emergency Generators and Fire Pumps

Equipment Type	Fuel Type	Number per Day	Hours per Day	Hours per Year	Horsepower	Load Factor
----------------	-----------	----------------	---------------	----------------	------------	-------------

5.16.2. Process Boilers

Equipment Type	Fuel Type	Number	Boiler Rating (MMBtu/hr)	Daily Heat Input (MMBtu/day)	Annual Heat Input (MMBtu/yr)
----------------	-----------	--------	--------------------------	------------------------------	------------------------------

5.17. User Defined

Equipment Type	Fuel Type
----------------	-----------

5.18. Vegetation

5.18.1. Land Use Change

5.18.1.1. Unmitigated

Vegetation Land Use Type	Vegetation Soil Type	Initial Acres	Final Acres
--------------------------	----------------------	---------------	-------------

5.18.1.2. Mitigated

Vegetation Land Use Type	Vegetation Soil Type	Initial Acres	Final Acres
--------------------------	----------------------	---------------	-------------

5.18.1. Biomass Cover Type

5.18.1.1. Unmitigated

Biomass Cover Type	Initial Acres	Final Acres
--------------------	---------------	-------------

5.18.1.2. Mitigated

Biomass Cover Type	Initial Acres	Final Acres
--------------------	---------------	-------------

5.18.2. Sequestration

5.18.2.1. Unmitigated

Tree Type	Number	Electricity Saved (kWh/year)	Natural Gas Saved (btu/year)
-----------	--------	------------------------------	------------------------------

5.18.2.2. Mitigated

Tree Type	Number	Electricity Saved (kWh/year)	Natural Gas Saved (btu/year)
-----------	--------	------------------------------	------------------------------

6. Climate Risk Detailed Report

6.1. Climate Risk Summary

Cal-Adapt midcentury 2040–2059 average projections for four hazards are reported below for your project location. These are under Representation Concentration Pathway (RCP) 8.5 which assumes GHG emissions will continue to rise strongly through 2050 and then plateau around 2100.

Climate Hazard	Result for Project Location	Unit
Temperature and Extreme Heat	27.3	annual days of extreme heat
Extreme Precipitation	2.45	annual days with precipitation above 20 mm
Sea Level Rise	—	meters of inundation depth
Wildfire	0.00	annual hectares burned

Temperature and Extreme Heat data are for grid cell in which your project are located. The projection is based on the 98th historical percentile of daily maximum/minimum temperatures from observed historical data (32 climate model ensemble from Cal-Adapt, 2040–2059 average under RCP 8.5). Each grid cell is 6 kilometers (km) by 6 km, or 3.7 miles (mi) by 3.7 mi. Extreme Precipitation data are for the grid cell in which your project are located. The threshold of 20 mm is equivalent to about ¾ an inch of rain, which would be light to moderate rainfall if received over a full day or heavy rain if received over a period of 2 to 4 hours. Each grid cell is 6 kilometers (km) by 6 km, or 3.7 miles (mi) by 3.7 mi.

Sea Level Rise data are for the grid cell in which your project are located. The projections are from Radke et al. (2017), as reported in Cal-Adapt (Radke et al., 2017, CEC-500-2017-008), and consider inundation location and depth for the San Francisco Bay, the Sacramento-San Joaquin River Delta and California coast resulting different increments of sea level rise coupled with extreme storm events. Users may select from four scenarios to view the range in potential inundation depth for the grid cell. The four scenarios are: No rise, 0.5 meter, 1.0 meter, 1.41 meters. Wildfire data are for the grid cell in which your project are located. The projections are from UC Davis, as reported in Cal-Adapt (2040–2059 average under RCP 8.5), and consider historical data of climate, vegetation, population density, and large (> 400 ha) fire history. Users may select from four model simulations to view the range in potential wildfire probabilities for the grid cell. The four simulations make different assumptions about expected rainfall and temperature are: Warmer/drier (HadGEM2-ES), Cooler/wetter (CNRM-CM5), Average conditions (CanESM2), Range of different rainfall and temperature possibilities (MIROC5). Each grid cell is 6 kilometers (km) by 6 km, or 3.7 miles (mi) by 3.7 mi.

6.2. Initial Climate Risk Scores

Climate Hazard	Exposure Score	Sensitivity Score	Adaptive Capacity Score	Vulnerability Score
Temperature and Extreme Heat	3	0	0	N/A
Extreme Precipitation	N/A	N/A	N/A	N/A
Sea Level Rise	1	0	0	N/A
Wildfire	1	0	0	N/A
Flooding	N/A	N/A	N/A	N/A
Drought	N/A	N/A	N/A	N/A
Snowpack Reduction	N/A	N/A	N/A	N/A
Air Quality Degradation	0	0	0	N/A

The sensitivity score reflects the extent to which a project would be adversely affected by exposure to a climate hazard. Exposure is rated on a scale of 1 to 5, with a score of 5 representing the greatest exposure.

The adaptive capacity of a project refers to its ability to manage and reduce vulnerabilities from projected climate hazards. Adaptive capacity is rated on a scale of 1 to 5, with a score of 5 representing the greatest ability to adapt.

The overall vulnerability scores are calculated based on the potential impacts and adaptive capacity assessments for each hazard. Scores do not include implementation of climate risk reduction measures.

6.3. Adjusted Climate Risk Scores

Climate Hazard	Exposure Score	Sensitivity Score	Adaptive Capacity Score	Vulnerability Score
Temperature and Extreme Heat	3	1	1	3
Extreme Precipitation	N/A	N/A	N/A	N/A
Sea Level Rise	1	1	1	2
Wildfire	1	1	1	2
Flooding	N/A	N/A	N/A	N/A
Drought	N/A	N/A	N/A	N/A

Snowpack Reduction	N/A	N/A	N/A	N/A
Air Quality Degradation	1	1	1	2

The sensitivity score reflects the extent to which a project would be adversely affected by exposure to a climate hazard. Exposure is rated on a scale of 1 to 5, with a score of 5 representing the greatest exposure.

The adaptive capacity of a project refers to its ability to manage and reduce vulnerabilities from projected climate hazards. Adaptive capacity is rated on a scale of 1 to 5, with a score of 5 representing the greatest ability to adapt.

The overall vulnerability scores are calculated based on the potential impacts and adaptive capacity assessments for each hazard. Scores include implementation of climate risk reduction measures.

6.4. Climate Risk Reduction Measures

7. Health and Equity Details

7.1. CalEnviroScreen 4.0 Scores

The maximum CalEnviroScreen score is 100. A high score (i.e., greater than 50) reflects a higher pollution burden compared to other census tracts in the state.

Indicator	Result for Project Census Tract
Exposure Indicators	—
AQ-Ozone	97.6
AQ-PM	89.4
AQ-DPM	55.0
Drinking Water	96.5
Lead Risk Housing	45.8
Pesticides	0.00
Toxic Releases	66.0
Traffic	84.2
Effect Indicators	—
CleanUp Sites	96.0
Groundwater	98.5
Haz Waste Facilities/Generators	99.1
Impaired Water Bodies	12.5
Solid Waste	99.7

Sensitive Population	—
Asthma	78.5
Cardio-vascular	84.3
Low Birth Weights	75.6
Socioeconomic Factor Indicators	—
Education	85.9
Housing	28.2
Linguistic	69.8
Poverty	60.8
Unemployment	25.2

7.2. Healthy Places Index Scores

The maximum Health Places Index score is 100. A high score (i.e., greater than 50) reflects healthier community conditions compared to other census tracts in the state.

Indicator	Result for Project Census Tract
Economic	—
Above Poverty	21.01886308
Employed	36.37880149
Median HI	37.44385987
Education	—
Bachelor's or higher	18.61927371
High school enrollment	100
Preschool enrollment	54.67727448
Transportation	—
Auto Access	81.29090209
Active commuting	4.234569485
Social	—
2-parent households	37.46952393
Voting	27.79417426

Neighborhood	—
Alcohol availability	61.83754652
Park access	2.194276915
Retail density	20.45425382
Supermarket access	46.58026434
Tree canopy	6.582830746
Housing	—
Homeownership	77.71076607
Housing habitability	73.74566919
Low-inc homeowner severe housing cost burden	47.09354549
Low-inc renter severe housing cost burden	94.37957141
Uncrowded housing	14.98780957
Health Outcomes	—
Insured adults	9.367380983
Arthritis	38.0
Asthma ER Admissions	36.9
High Blood Pressure	68.0
Cancer (excluding skin)	68.9
Asthma	9.8
Coronary Heart Disease	43.7
Chronic Obstructive Pulmonary Disease	12.3
Diagnosed Diabetes	36.9
Life Expectancy at Birth	24.4
Cognitively Disabled	36.6
Physically Disabled	57.4
Heart Attack ER Admissions	36.4
Mental Health Not Good	13.8
Chronic Kidney Disease	45.1

Obesity	23.4
Pedestrian Injuries	80.3
Physical Health Not Good	19.5
Stroke	39.4
Health Risk Behaviors	—
Binge Drinking	36.9
Current Smoker	15.0
No Leisure Time for Physical Activity	31.5
Climate Change Exposures	—
Wildfire Risk	30.9
SLR Inundation Area	0.0
Children	48.8
Elderly	81.3
English Speaking	30.9
Foreign-born	66.5
Outdoor Workers	10.7
Climate Change Adaptive Capacity	—
Impervious Surface Cover	80.4
Traffic Density	83.0
Traffic Access	23.0
Other Indices	—
Hardship	81.5
Other Decision Support	—
2016 Voting	48.5

7.3. Overall Health & Equity Scores

Metric	Result for Project Census Tract
CalEnviroScreen 4.0 Score for Project Location (a)	96.0

Healthy Places Index Score for Project Location (b)	25.0
Project Located in a Designated Disadvantaged Community (Senate Bill 535)	Yes
Project Located in a Low-Income Community (Assembly Bill 1550)	Yes
Project Located in a Community Air Protection Program Community (Assembly Bill 617)	No

a: The maximum CalEnviroScreen score is 100. A high score (i.e., greater than 50) reflects a higher pollution burden compared to other census tracts in the state.

b: The maximum Health Places Index score is 100. A high score (i.e., greater than 50) reflects healthier community conditions compared to other census tracts in the state.

7.4. Health & Equity Measures

No Health & Equity Measures selected.

7.5. Evaluation Scorecard

Health & Equity Evaluation Scorecard not completed.

7.6. Health & Equity Custom Measures

No Health & Equity Custom Measures created.

8. User Changes to Default Data

Screen	Justification
Construction: Construction Phases	Default construction schedule updated to match schedule provided by contractor.
Construction: Trips and VMT	demolition material will be recycled at RAMCO site in Rialto, located 3 miles from the Project.
Construction: Architectural Coatings	Default values changed to be consistent with SCAQMD Rule 1113 which requires VOC to 50 g/L or less.
Operations: Vehicle Data	According to "Level of Service (LOS) and Vehicle Miles Traveled (VMT) Screening Memorandum for the 2175 S. Willow Avenue Warehouse Project in the City of Rialto" the project is not expected to generate a net increase in traffic. Therefore no new trips have been modeled in CalEEMod.
Operations: Architectural Coatings	SCAQMD Rule 1113 requires VOC emissions to be 50 g/L or less