

Utility Commission Report

JANUARY 2025

Reporting period November 2024



RIALTO
CUSTOMER SERVICE & REVENUE
MONTHLY OPERATIONS REPORT

Reporting Period:
November 2024

Prepared for: Rialto Water Services

Prepared by: Veolia Water West Operating Services



Table of Contents

I. CUSTOMER SERVICE SUMMARY.....	3
II. CALL CENTER PERFORMANCE.....	3
III. AUTOMATED SERVICES.....	3
IV. CONSUMPTION & BILLING.....	4
A. Consumption.....	4
B. Billing.....	4
V. REVENUE & AGING.....	5
A. Revenue	5
B. Aging	6
C. Bad Debt.....	6
VI. SERVICE ORDERS	7
VII. OTHER ACTIVITIES	7
VIII. REVENUE REPORT	7
A. Revenue Summary.....	7
B. Non Rate Revenue - Extraterritorial Customers.....	7
C. Non-Rate Revenue – Other	8
D. Development Impact Fees.....	8
E. Rialto Basin Water Rights and Leasing	8
F. Cash Collections by Payment Method – Rialto Water Services.....	9
G. Payment Collection Method – Fiscal Year to Date.....	10
H. Cash Collections on Behalf of the City of Rialto-Prior Year Comparison.....	10
I. Non-Rate Revenue + Utility Revenue Collections Prior Year Comparison	10
J. Non-Rate Revenue + Utility Revenue Collected Fiscal Year-to-Date.....	11
K. Increase in Cash Collections and Fund Distribution—Prior Year Comparison	11
L. Non-Rate and Extraterritorial Customer Accounts Receivable Aging	12

I. CUSTOMER SERVICE SUMMARY

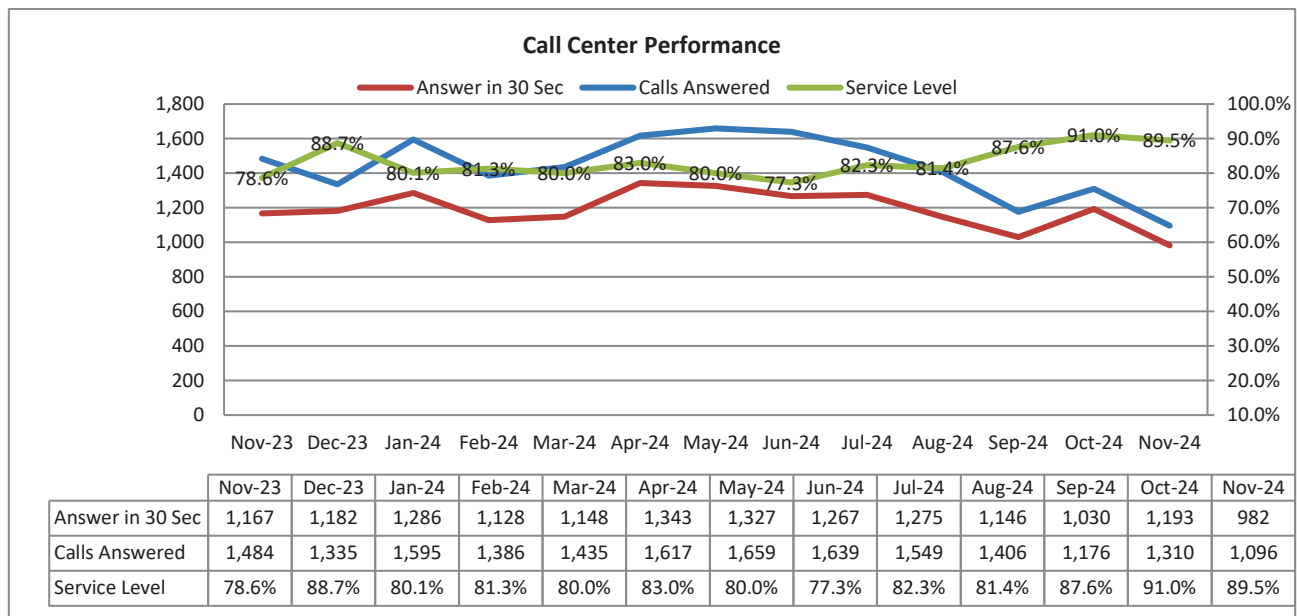
During this reporting month, the Customer Service team provided call service level of 89.5%. Out of 1,096 inbound calls answered, 982 were answered within the first 30 seconds.

Water consumption has increased by 15.5% when compared against previous month. When compared against last year, consumption has increased by 30.6%.

Sewer revenue has increased by 2.1% compared to the prior month and increased by 4.9% from last year.

II. CALL CENTER PERFORMANCE

During this reporting month, service level was 89.5% with 982 out of 1,096 being answered within the first 30 seconds. Overall average wait time was twenty-six (26) seconds.



III. AUTOMATED SERVICES

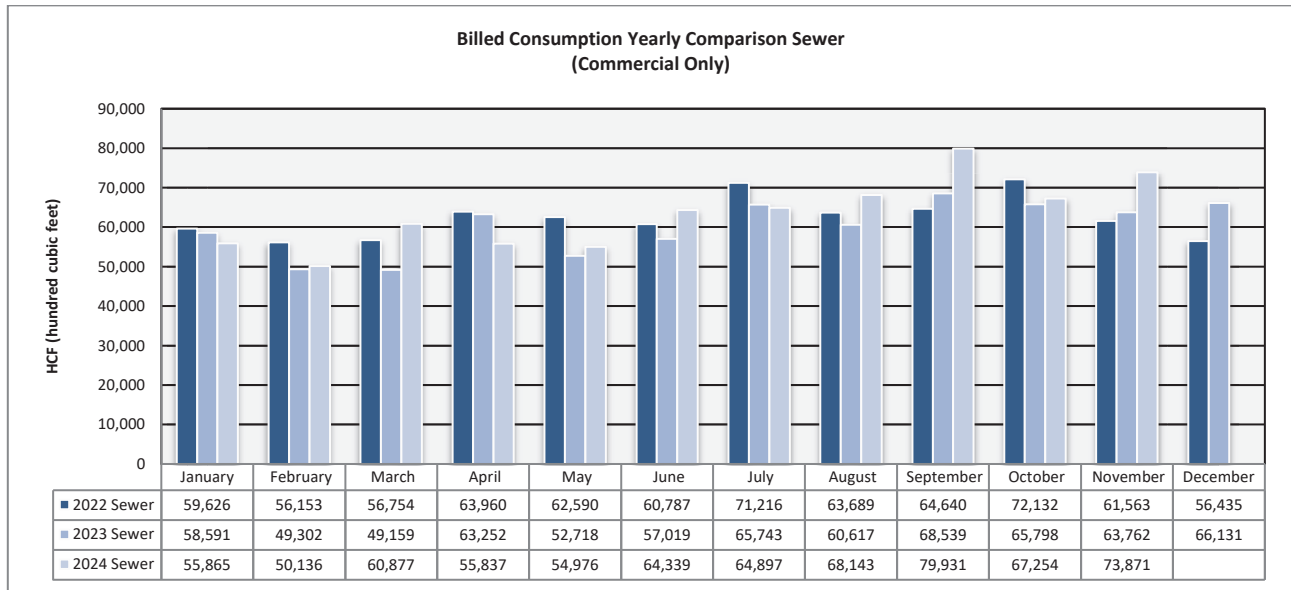
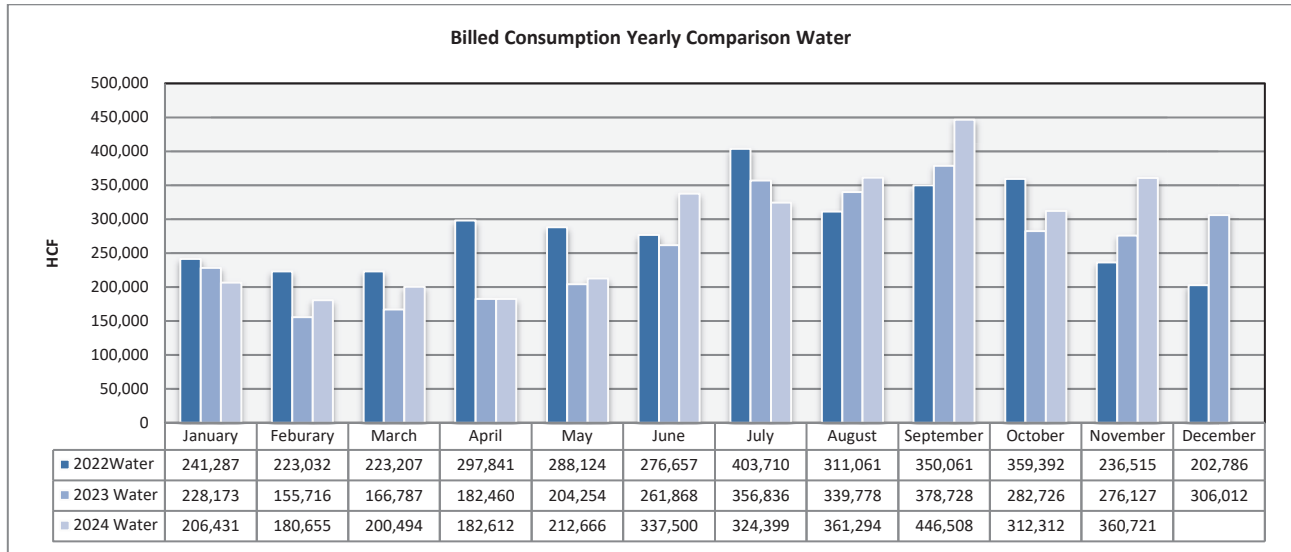
About 12,236 or 54.2% of the rate payers have created log-ins to access their accounts online. Of these customers, with online access, 48.3% have chosen the e-bill option. This e-bill participation is less than 1% increase from November of the prior year.

	Nov-23	Dec-23	Jan-24	Feb-24	Mar-24	Apr-24	May-24	Jun-24	Jul-24	Aug-24	Sep-24	Oct-24	Nov-24
Number of Bills	22,106	22,161	22,204	22,246	22,202	22,369	22,331	22,372	22,410	22,425	22,470	22,541	22,571
Number of Bill Adjustments (during billing)	9	5	15	18	10	12	16	10	11	9	5	11	9
Automated Over the Phone Payments	2,597	2,340	2,700	2,539	2,539	2,592	2,382	2,058	2,250	2,310	2,050	2,483	2,092
Online Payment	8,624	7,466	10,027	8,553	7,756	9,888	9,126	7,457	9,828	9,302	7,538	9,302	7,804
E-bill Participants	5,896	5,451	5,497	5,534	5,564	5,610	5,654	5,683	5,731	5,770	5,814	5,855	5,922
Auto Pay Participants (New Portal)	3,896	3,927	3,984	4,007	4,054	4,082	4,129	4,165	4,221	4,273	4,278	4,305	4,343
PayNearMe	134	107	128	100	115	118	111	88	114	118	92	95	93

IV. CONSUMPTION & BILLING

A. Consumption

Water consumption has increased by 15.5% when compared against previous month. When compared against last year, consumption has increased by 30.6%. Previous 6 months is showing trend of increase in water consumption.



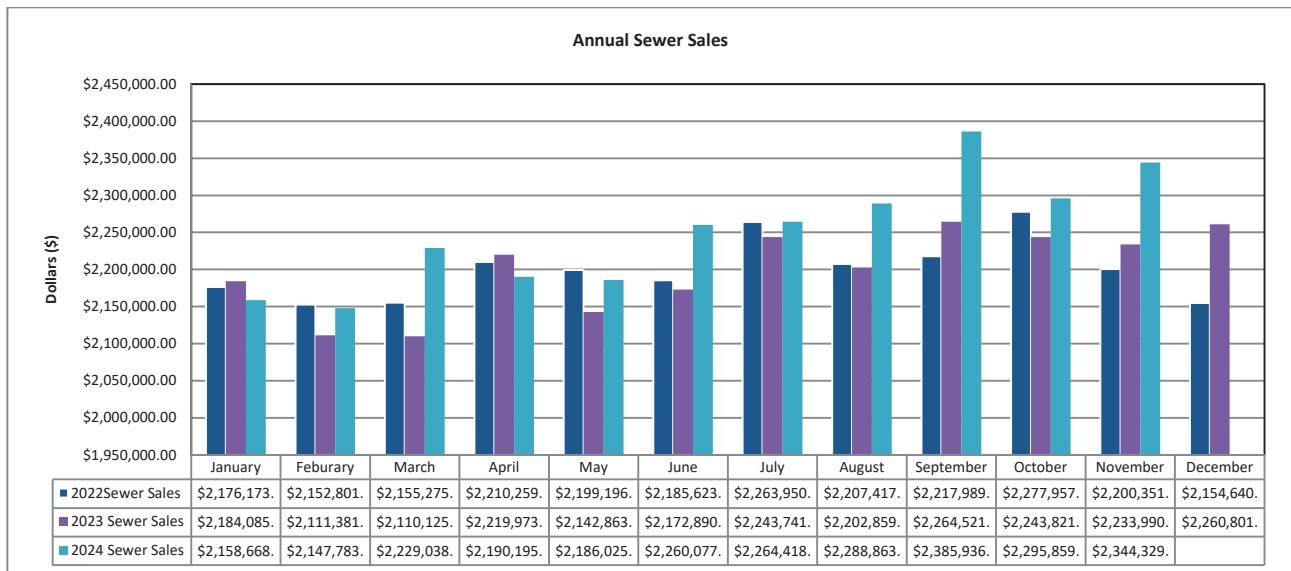
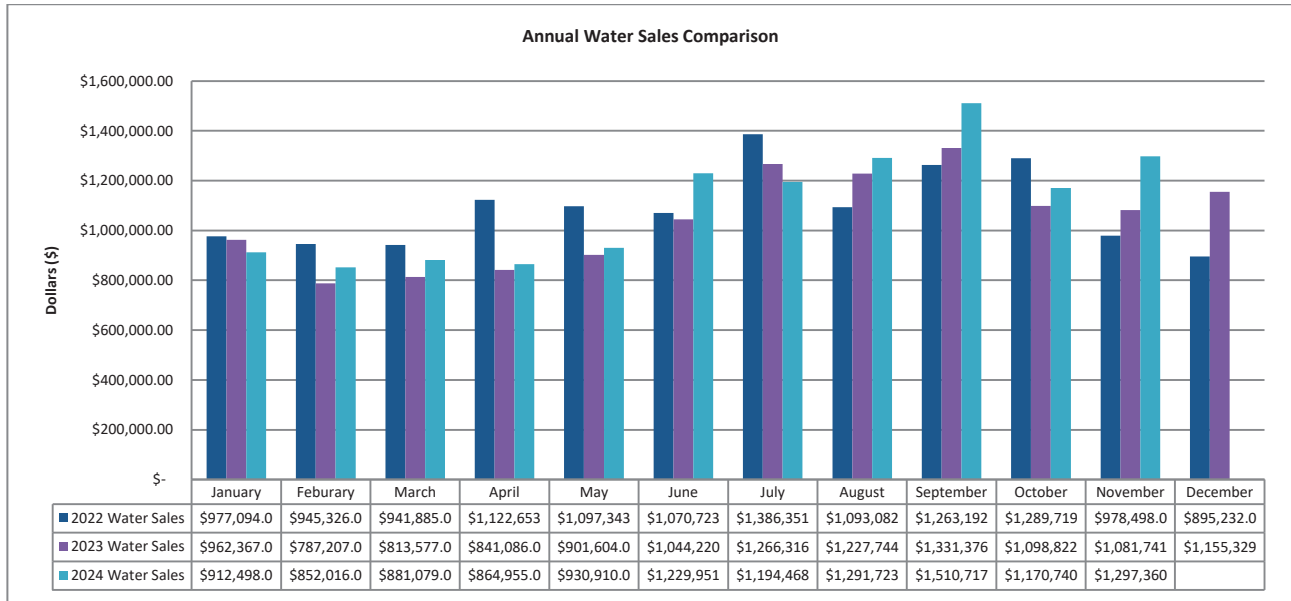
B. Billing

A total of 22,571 bills were mailed or sent out electronically in November. Billing accuracy was 99.96% with nine (9) requiring adjustments.

V. REVENUE & AGING

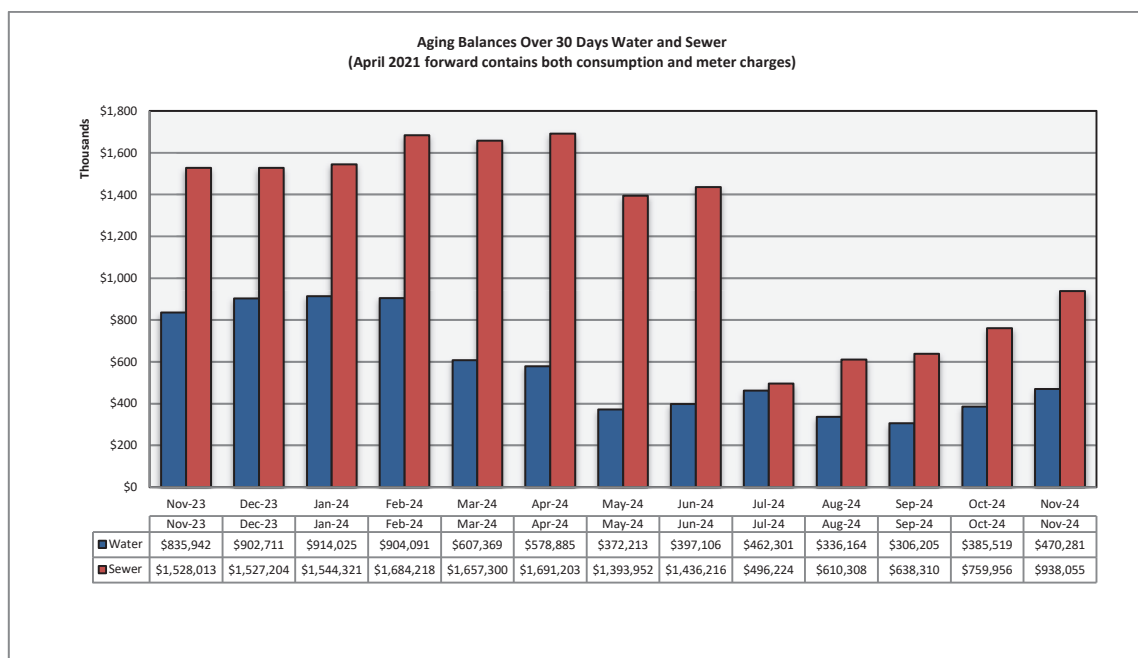
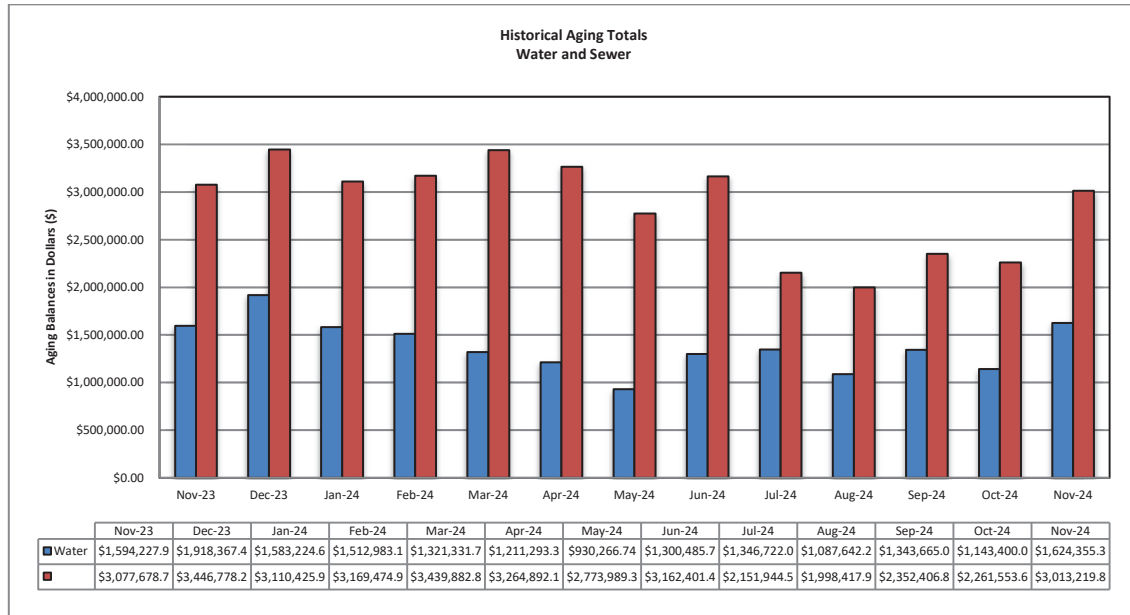
A. Revenue

Water revenue has increased 10.8% when compared against the prior month and increased 19.9% when compared against previous year. Sewer revenue has increased by 2.1% compared to the prior month and increased by 4.9% from last year. Please consider that revenue from water consumption is smaller than monthly water base charges.



B. Aging

The total aging balance has increased by 36.2%, see first table below. For balances >30-days only, water has increased 22.0% and wastewater has increased by 23.4%.



C. Bad Debt

13 (thirteen) accounts were sent to collections for a total amount of \$3,058.53. These collections arise when renter or property owner move out without paying their bills.

VI. SERVICE ORDERS

268 service orders were initiated by the customer service team during the reporting month. Of this total, 62 service orders or 23.1% were due to occupant changes.

151 service orders were initiated to accommodate water disconnection for non-payment and reconnection of water services when customer set up (or reinstate) a payment arrangement with down payment.

VII. OTHER ACTIVITIES

Number of physical disconnection has increased to about 20-30 accounts per week. This number is similar to quantities prior to Covid-19 pandemic.

VIII. REVENUE REPORT

A. Revenue Summary

Cash Revenue is compiled and reconciled to the merchant account on a daily basis. Cash receipts and deposits are made daily and internal controls are reviewed regularly to ensure safeguarding of assets and proper recording of all transactions. Total revenue collected in November 2024 is \$3,234,000 Non-Rate Revenue is \$527,000; Utility Revenue is \$2,515,000 and Tax / Ambulance Revenue at \$192,000.

RWS collects Utility User Taxes and Ambulance Fees on behalf of the City of Rialto. The Utility User Tax (UUT) rates are based on the total billed amount, therefore the collection fluctuates as billed amounts change. The total UUT charges collected in November 2024 and November 2023 are \$187,000 and \$223,000 respectively. Ambulance Revenue is also collected on behalf of the City of Rialto totaling \$4,000 in November 2024 and \$4,000 in November 2023.

B. Non Rate Revenue - Extraterritorial Customers

RWS bills the City of Fontana \$123,000 each month for extraterritorial sewer usage.

Colton Unified School District is in agreement with RWS to pay \$5,000 monthly for sewage connections based on enrollment rates provided each school year.

An extraterritorial agreement to provide sewer service was executed between the City of Rialto and the County of San Bernardino—County Service Area 70, Zone BL (Bloomington). This housing development project generates extraterritorial sewer service revenue of \$19,000 per month.

The City has an agreement with Social Science Services dba Cedar House Life Change Center to provide extraterritorial sewer service providing sewer revenue of about \$8,000 each month.

C. Non-Rate Revenue – Other

Other revenue is generated by leasing space for cell towers to AT&T, which has two leases at \$2,073 and \$1,500. Sprint lease is at a currently contracted rate of \$1,700 each month. Vertical Bridge also provides \$2,400 a month of cell tower generated Revenue.

Rialto Bioenergy Facilities subleased a City property for \$10,500 a month.

The City and San Bernardino Valley Municipal Water District have entered into a Brine Line Capacity Agreement on November 23, 2021. This agreement pertains to the use of its interest in the SARI Line and discharge of certain brine waste to the SARI Line exclusively from the operation of Rialto Bioenergy Facilities within the City’s boundaries. The revenue generated in this agreement consists of quarterly rent of \$37,500 along with the Fixed Pipeline Capacity Fee of \$3,300 per month and Fixed Treatment Plant Capacity Fee of \$3,300 per month. In addition, a variable fee of any discharge costs are also billed.

The San Bernardino Valley Water District (SBVWD) reimburses RWS for water conservation programs provided to customers. A quarterly bill is delivered directly by the City.

D. Development Impact Fees

Development Impact Fees (“DIF”) are paid to the City of Rialto as various developments are completed in the City. As such, the City of Rialto receives monies from the various developments, which is then distributed to RWS. There was no DIF payment received in November of 2024.

E. Rialto Basin Water Rights and Leasing

A Standby Water Lease Agreement between Fontana Union Water Company and City of Rialto is in effect. For the Water 2023-2024 Water Year, RWS received a payment from San Bernardino County the amount of \$332,624 for Standby Charges and Production Charges.

In addition, the County is also billed annually for Rialto Well #3’s summertime electricity costs based on peak usage.

F. Cash Collections by Payment Method – Rialto Water Services

Payment Method	Description	Transaction Count	NOVEMBER 2024	%
Carrier Deposits	Cash deposits prepared per day for transport to US Bank	19	\$ 89,627	2.63%
Remote Check Deposits	Scanned batches of checks payments made at the customer service counter	19	613,264	18.01%
EBOX	Batches of electronic customer payments posted to customer accounts at US Bank.	20	288,522	8.47%
PAYMENTUS - IVR / Paymentus / Walk-in Credit Card payment	Customer payments by credit cards and ACH / eCheck payments through an Interactive Voice Response system using a touchtone phone. Payments originated from Merchant online service	10,644	1,499,559	44.04%
Lockbox Deposits	Batches of customer payments mailed in to US Bank's lockbox.	20	903,561	26.54%
Pay Near Me	Cash payment service that allows customers to pay at a local 7-Eleven, CVS, or Family Dollar stores.	82	10,491	0.31%
Total Revenue per Bank			\$ 3,405,024	100%
Recon to RUA Recap:				
Adj detailed in RUA			(170,671)	
Prior mo. Correction				
RUA increase in Cash			\$ 3,234,353	

Transaction Counts for Carrier Deposits, Remote Deposits, UB Bill Conc Service (EBOX), and Lockbox Deposits reflect number of batches deposited to the bank. Transaction counts for credit card POS, IVR, and Pay-Near-Me transactions are per number of customer payments. IVR payments are received and process by Paymentus on the day the transactions are made. General ledger are posted and accounted for the following day the payments are processed.

G. Payment Collection Method – Fiscal Year to Date

	Jul 2024	Aug 2024	Sept 2024	Oct 2024	Nov 2024	TOTAL	%
Cash Deposits	\$ 122,310	\$ 116,600	\$ 111,287	\$ 121,951	\$ 89,627	\$ 561,776	2.89%
Remote Check Deposits	227,143	953,011	383,642	394,629	613,264	\$ 2,571,688	13.24%
EBOX	334,259	346,067	289,347	349,088	288,522	\$ 1,607,283	8.27%
Paymentus, IVR, Credit Cards	1,827,817	1,855,221	1,688,345	2,034,573	1,499,559	\$ 8,905,515	45.83%
Lockbox Deposits	1,169,619	1,273,243	1,089,604	1,285,860	903,561	\$ 5,721,887	29.45%
Pay Near Me	14,561	14,530	10,989	11,968	10,491	\$ 62,539	0.32%
Total Revenue to Bank	\$ 3,695,709	\$ 4,558,672	\$ 3,573,214	\$ 4,198,068	\$ 3,405,024	\$ 19,430,687	100.00%
NSF	(7,962)	(4,947)	(8,970)	(8,950)	(21,124)	\$ (51,952)	
Net deposits	\$ 3,687,747	\$ 4,553,726	\$ 3,564,244	\$ 4,189,118	\$ 3,383,900	\$ 19,378,735	

H. Cash Collections on Behalf of the City of Rialto-Prior Year Comparison

	Nov 2024	Nov 2023	Variance
UUT Water	\$ 62,229	\$ 73,799	\$ (11,570)
UUT Sewer	125,234	149,004	(23,769)
Ambulance	4,112	4,510	(397)
Total	\$ 191,575	\$ 227,312	\$ (35,737)

I. Non-Rate Revenue + Utility Revenue Collections Prior Year Comparison

	Nov 2024	Nov 2023	Variance
Non-Rate / Extra Territorial Revenue	\$ 527,477	\$ 165,374	\$ 362,103
Utility Revenue	\$ 2,515,301	\$ 3,321,846	\$ (806,545)
Total	\$ 3,042,778	\$ 3,487,220	\$ (444,442)

J. Non-Rate Revenue + Utility Revenue Collected Fiscal Year-to-Date

	Jul 2024	Aug 2024	Sept 2024	Oct 2024	Nov 2024	TOTAL
Non-Rate Revenue						
Cell Tower Rent, Lease	5,647	19,985	21,506	66,161	55,391	168,690
Interest Income	19,290	9,559	-	-	-	28,850
NRR-FOG	-	-	-	-	-	-
Municipal Water Sales	-	-	-	-	332,624	332,624
Extra Terr- Sewage	31,463	252,123	161,340	185,039	136,360	766,325
Abatement of Expenses	-	-	-	-	-	-
Water Meter Lost/Damaged/Repl	1,419	710	2,129	5,171	-	9,429
Misc Fees - New Occ, Same Day Svc	5,877	4,453	4,939	5,629	3,067	23,964
Miscellaneous Revenue - Sewer	-	-	-	-	-	-
NSF	-	342	-	152	35	529
DIF - Wastewater Connection	-	-	-	-	-	-
Sewer Bad Debt Collection Fees	-	-	-	-	-	-
Sewer Cash Over/Short	-	-	-	-	-	-
Total Non-Rate Revenue	\$ 63,697	\$ 287,171	\$ 189,913	\$ 262,152	\$ 527,477	\$ 1,330,410
Utility Revenue						
Water Penalty	3,154	15,321	10,183	5,903	2,602	37,162
Sewer Penalty	5,200	33,061	18,283	7,639	3,313	67,495
Turf Removal, Hi-Eff Rebate	(1,000)	(100)	-	-	-	(1,100)
Senior Disc - Water	-	-	-	-	-	-
Senior Disc - Sewer	-	-	-	-	-	-
Water Contract	-	-	-	-	-	-
Water Deposits Paid	-	-	-	-	-	-
Water Deposits Billed	17,289	8,629	9,906	8,629	8,686	53,140
Hydrant Deposits	574	-	-	-	420	994
Sewer Deposits Paid	-	-	-	-	-	-
Sewer Deposits Billed	11,760	12,823	9,518	10,900	15,201	60,202
Water	1,171,886	1,540,256	1,194,449	1,386,681	884,906	6,178,178
Sewer	2,327,246	2,418,456	1,959,890	2,448,917	1,669,263	10,823,771
Unapplied Credits	(101,077)	(54,176)	(140,916)	(81,949)	(69,090)	(447,209)
Bad Debt Sewer	12,029	9,909	-	-	-	21,939
Bad Debt Water	-	-	-	-	-	-
Tax Roll - Sewer	15,596	2,790	-	-	-	18,386
Collection Agency - Water	-	-	-	-	-	-
Collection Agency - Sewer	-	-	-	-	-	-
Collection Agency - Misc Water	-	-	-	-	-	-
Total Utility Revenue	\$ 3,462,656	\$ 3,986,969	\$ 3,061,313	\$ 3,786,719	\$ 2,515,301	\$ 16,812,958
Total Non-Rate + Utility Rev.	3,526,353	4,274,141	3,251,226	4,048,871	3,042,778	18,143,368

K. Increase in Cash Collections and Fund Distribution—Prior Year Comparison

	Increase to Cash per CIS	Adjustments Required to GL Cash	Fund 660-Sewer	Fund 670-Water	Total Cash Per GL	Adjustments To Match RUA to Bank	Cash/CC/Cks Deposit To Bank
November 2024	3,234,353	22,440	1,899,653	1,312,260	3,234,353	170,671	3,405,024
November 2023	3,714,532	11,860	2,451,377	1,251,295	3,714,532	7,519	3,722,051

L. Non-Rate and Extraterritorial Customer Accounts Receivable Aging

Name	Total as of 11/30/2024	Current	31-60 days	61-90 days	>90 days
AT&T - Easton	\$ (7,721)	(1,500)	-	-	(6,221)
Social Science Service - Cedar House	-	-	-	-	-
CITY OF FONTANA	123,847	123,847	-	-	-
Colton Unified School District	-	-	-	-	-
County of San Bernardino-CSA 70 BL	19,403	19,403	-	-	-
Rialto BioEnergy Solutions	16,958	16,958	-	-	-
Sprint-Nextel SBA 2012 TC Assets	-	-	-	-	-
San Bernardino Co Waste System Div.	-	-	-	-	-
SB Valley Mun Water District	-	-	-	-	-
Vertical Bridge Holdco, LLC (CIG)	7,544	2,830	-	-	4,714
Grand Total	\$ 160,032	\$ 161,539	\$ -	\$ -	\$ (1,507)

AT&T The credit indicates annual payment of cell tower rent.

Social Science Service (Cedar House) is current with its obligations.

City of Fontana is current with its obligations.

Colton Unified School District is current with its obligations.

County of San Bernardino is current with its obligations.

Rialto Bioenergy Facilities has been contacted for payment of outstanding Invoices.

Vertical Bridge Holdco, LLC and Sprint: Vertical Bridge and Sprint have been contacted for open Invoices as well.

RIALTO WATER
MONTHLY OPERATIONS REPORT

Reporting Period:

November 2024

Prepared for: Rialto Water Services

Prepared by: Veolia Water West Operating Services

RIALTO WATER
OPERATIONS AND MAINTENANCE REPORT

Contents

I.	EXECUTIVE SUMMARY	3
A.	Water Production Totals	4
B.	Static Water Levels	6
II.	REGULATORY	7
A.	Regulatory Submittals	7
B.	Sample Site Location Results	8
C.	Violations	10
D.	Source Water Total Dissolved Solids (TDS)	10
III.	HEALTH AND SAFETY	10
A.	Monthly Safety Program Overview	10
IV.	CHEMICAL USE	10
V.	ELECTRICAL USE	11
VI.	WATER QUALITY COMPLAINTS	11
VII.	OPERATIONS UPDATE	11
A.	Operational Wells	12
B.	Valve Activity	12
C.	Hydrant Flushing	12
D.	Sanitary Survey	13
VIII.	ASSET MANAGEMENT	13
A.	Main Breaks, Service Leaks, Adverse Water Quality and Health/Safety Issues	13
B.	Major Equipment and/or Machinery Outages	13
IX.	RAINFALL TOTALS	14

RIALTO WATER

MONTHLY OPERATIONS REPORT

I. EXECUTIVE SUMMARY

Highlights of this month's Water O&M report include the following:

- The water distribution network achieved compliance with all permit requirements.
- No sample anomalies that require secondary sampling.
- No significant issues with water availability. The purchasing of water remained consistent and daily equalization tanks levels remained at anticipated volume for customer availability.
- The Preventative Maintenance Program, as well as Valve Exercising, continues to identify areas of focus for our Routine Repair and Replacement.

A. Water Production Totals

Total water delivered into the Rialto system this month was 802.79 acre-feet. 590.41 acre-feet was delivered into the system from the groundwater wells (City 4A production is included in the well total). 95.78 acre-feet was delivered via the BLF transmission system (City 4A production has been deducted). 116.60 acre-feet came from the OPRTP.

NOVEMBER 2024 DAILY PRODUCTION TOTALS IN ACRE FEET											
DATE	Chino 2	City 2	Rialto 3	Rialto 5	Miro 3	EW-1	Delivered Via BLF				TOTAL ³
							City 4A	Purchased		OPRTP ²	
							BOOSTER 6-9	Cactus ¹			
11/1/24	4.52	4.50	0.00	0.00	3.89	5.84	0.00	0.00	1.74	4.14	24.63
11/2/24	6.20	7.32	0.00	0.00	4.02	6.08	0.00	0.00	2.16	4.71	30.49
11/3/24	5.37	8.10	0.00	0.00	3.94	6.03	0.00	0.00	1.77	5.49	30.70
11/4/24	5.14	6.10	0.00	0.00	4.13	6.11	0.00	0.00	4.06	4.27	29.81
11/5/24	5.37	5.11	0.00	0.00	3.85	5.87	0.00	0.00	3.05	3.32	26.57
11/6/24	4.94	6.33	0.00	0.00	3.88	5.88	0.00	0.00	2.89	4.56	28.48
11/7/24	5.42	1.66	0.00	0.00	3.84	5.71	1.11	0.00	3.99	4.91	25.53
11/8/24	5.37	6.29	0.00	0.00	3.87	5.85	1.64	0.00	3.74	0.00	25.12
11/9/24	5.56	8.27	0.00	0.00	3.84	5.80	0.00	0.00	2.57	5.90	31.94
11/10/24	4.96	8.81	0.00	0.00	3.89	5.87	0.22	0.00	2.41	5.39	31.33
11/11/24	4.91	7.05	0.00	0.00	4.29	6.43	0.00	0.00	4.32	4.28	31.28
11/12/24	4.96	6.39	0.00	0.00	3.65	5.56	0.20	0.00	2.50	3.37	26.43
11/13/24	5.12	6.14	0.00	0.00	3.79	5.73	1.10	1.33	2.57	0.00	24.68
11/14/24	5.78	7.17	0.00	0.00	3.94	5.93	0.00	0.09	3.35	0.00	26.26
11/15/24	4.96	6.57	0.00	0.00	3.96	5.97	0.32	0.00	3.90	0.00	25.36
11/16/24	0.00	6.96	0.00	0.00	3.88	5.86	0.00	0.00	3.28	3.70	23.68
11/17/24	4.38	5.35	0.00	0.00	3.78	5.83	0.00	0.00	2.94	4.25	26.53
11/18/24	0.00	6.88	0.00	0.00	3.93	5.87	2.74	1.70	3.86	4.97	27.21
11/19/24	0.00	6.14	0.00	0.00	4.01	6.05	1.93	2.92	3.79	4.31	27.22
11/20/24	0.00	6.59	0.00	0.00	3.98	6.11	0.51	0.37	2.85	4.63	24.53
11/21/24	0.00	5.80	0.00	0.00	3.67	6.33	4.23	4.80	3.90	3.98	28.48
11/22/24	0.00	7.15	0.00	0.00	3.87	5.83	0.08	0.09	3.42	4.90	25.26
11/23/24	0.00	7.46	0.00	0.00	3.80	5.81	0.00	0.00	3.88	4.48	25.43
11/24/24	0.00	8.30	0.00	0.00	3.97	5.96	0.00	0.00	0.00	4.84	23.07
11/25/24	0.00	7.25	0.00	0.00	3.77	5.75	0.00	0.00	7.30	4.25	28.32
11/26/24	0.00	6.37	0.00	0.00	4.35	6.27	0.00	0.00	2.32	4.17	23.48
11/27/24	0.00	6.93	0.00	0.00	3.64	5.73	0.00	1.37	1.77	4.65	24.09
11/28/24	0.00	6.95	0.00	0.00	3.96	5.95	0.00	0.00	5.16	4.54	26.56
11/29/24	0.00	7.59	0.00	0.00	4.20	5.43	0.00	0.00	3.14	4.58	24.94
11/30/24	0.00	7.44	0.00	0.00	3.73	5.64	0.00	0.00	4.56	4.01	25.38
TOTAL	82.96	198.97	0.00	0.00	117.32	177.08	14.08	12.67	97.19	116.60	802.79
MIN	0.00	1.66	0.00	0.00	3.64	5.43	0.00	0.00	0.00	0.00	23.07
MAX	6.20	8.81	0.00	0.00	4.35	6.43	4.23	4.80	7.30	5.90	31.94
AVE	2.77	6.63	0.00	0.00	3.91	5.90	0.47	0.42	3.24	3.89	26.76

¹ Measured at point of connection at Cactus Reservoir site including production from City 4A. Amount may vary compared to billing.

² Measured at point of connection at Cedar Reservoir site. Amount may vary as compared to billing.

³ City 4A is not included in total. It has been accounted for in the Purchased total.

NOVEMBER 2024 DAILY BOOSTER TOTALS IN ACRE FEET

DATE	Booster 1	Booster 2	Booster 3	Booster 4	Booster 5	Booster 6-9	Booster 10	Booster 11
11/1/24	0.00	0.00	4.26	0.00	0.00	0.00	0.00	0.00
11/2/24	0.00	0.00	3.48	0.00	0.00	0.00	0.00	0.00
11/3/24	0.00	0.00	4.94	0.00	0.00	0.00	0.00	0.00
11/4/24	0.00	0.00	1.87	0.00	0.00	0.00	0.00	0.00
11/5/24	0.00	0.00	2.75	0.00	0.00	0.00	0.00	0.00
11/6/24	0.00	0.00	2.93	0.00	0.00	0.00	0.00	0.00
11/7/24	0.00	0.00	0.57	0.00	0.00	0.00	0.00	0.00
11/8/24	0.00	0.00	4.81	0.00	0.00	0.00	0.00	0.00
11/9/24	0.00	0.00	5.23	0.00	0.00	0.00	0.00	0.00
11/10/24	0.00	0.00	2.82	0.00	0.00	0.00	0.00	0.00
11/11/24	0.00	0.00	3.33	0.00	0.00	0.00	0.00	0.00
11/12/24	0.00	0.00	1.91	0.00	0.00	0.00	0.00	0.00
11/13/24	0.00	0.00	3.60	0.00	0.00	1.33	0.00	0.00
11/14/24	0.00	0.00	3.53	0.00	0.00	0.09	0.00	0.00
11/15/24	0.00	0.00	3.42	0.00	2.89	0.00	0.00	0.00
11/16/24	0.00	0.00	2.92	0.00	0.00	0.00	0.00	0.00
11/17/24	0.00	0.00	0.00	0.00	0.00	0.00	0.00	0.00
11/18/24	0.00	0.00	1.92	0.00	0.00	1.70	0.00	0.00
11/19/24	0.00	0.00	0.97	0.00	0.00	2.92	0.00	0.00
11/20/24	0.00	0.00	0.73	0.00	0.00	0.37	0.00	0.00
11/21/24	0.00	0.00	3.55	0.00	0.00	4.80	0.00	0.00
11/22/24	0.00	0.00	1.34	0.00	0.00	0.09	0.00	0.00
11/23/24	0.00	0.00	2.50	0.00	0.00	0.00	0.00	0.00
11/24/24	0.00	0.00	1.44	0.00	0.00	0.00	0.00	0.00
11/25/24	0.00	0.00	2.02	0.00	0.00	0.00	0.00	0.00
11/26/24	0.00	0.00	1.16	0.00	0.00	0.00	0.00	0.00
11/27/24	0.00	0.00	1.12	0.00	0.00	1.37	0.00	0.00
11/28/24	0.00	0.00	0.00	0.00	0.00	0.00	0.00	0.00
11/29/24	0.00	0.00	3.00	0.00	0.00	0.00	0.00	0.00
11/30/24	0.00	0.00	1.45	0.00	0.00	0.00	0.00	0.00
TOTAL	0.00	0.00	73.57	0.00	2.89	12.67	0.00	0.00
MIN	0.00	0.00	0.00	0.00	0.00	0.00	0.00	0.00
MAX	0.00	0.00	5.23	0.00	2.89	4.80	0.00	0.00
AVE	0.00	0.00	2.45	0.00	0.10	0.42	0.00	0.00

B. Static Water Levels

All City of Rialto wells are sounded each month, both active and inactive well sites. Depth-to-water is measured from the well head to the static water surface. Increases in depth-to-water represent a decrease in static water level.

Depth to Water													
Wells Depth to Pump	Historical Maximum Depth to Water	Nov	Dec	Feb	Mar	Apr	May	Jun	Jul	Aug	Sept	Oct	Nov
Chino # 1 (580 ft) In-active well	429'	416'	411'	411'	420'	417'	411'	414'	414'	412'	411'	411'	411'
Chino # 2 (550 ft)	369'	344'	344'	345'	342'	346'	354'	347'	352'	347'	347'	343'	340'
City # 1 (260 ft)	392'	247'	247'	247'	247'	164'	158'	158'	151'	150'	247'	247'	251'
City # 2 (480 ft)	402'	212'	212'	210'	171'	182'	164'	164'	164'	171'	210'	137'	139'
City # 3 (525 ft) Out of Service	505'	456'	451'	429'	450'	423'	423'	423'	418'	417'	416'	416'	417'
City # 4A (528 ft)	406'	374'	375'	376'	361'	373'	373'	374'	380'	379'	380'	380'	380'
City # 5 (385 ft) In-active well	364'	360'	358'	340'	339'	340'	339'	335'	333'	334'	332'	322'	320'
Rialto # 1 (650 ft) In-active well	588'	574'	581'	553'	564'	569'	569'	571'	571'	571'	571'	553'	552'
Rialto # 2 (550 ft) In-active well	502'	500'	501'	499'	500'	500'	500'	501'	500'	501'	502'	501'	501'
Rialto # 3 (509 ft)	478'	474'	474'	474'	475'	474'	475'	474'	477'	477'	473'	476'	473'
Rialto # 4 (450 ft) In-active well	418'	415'	415'	416'	415'	415'	415'	415'	416'	415'	418'	418'	414'
Rialto # 5 (560 ft)	386'	382'	383'	385'	385'	386'	386'	386'	386'	385'	384'	384'	384'
Rialto Well # 7 In-active well	362'	362'	362'	362'	361'	362'	362'	361'	361'	362'	362'	362'	361'
Miro # 3 (563 ft)	492'	489'	487'	485'	486'	487'	488'	487'	489'	487'	485'	485'	484'
EW-1 (780 ft)	476'	476'	476'	474'	475'	476'	476'	473'	474'	475'	474'	473'	475'

January 2024 the sounder was out of service.

II. REGULATORY

All State of California and public health agency regulatory requirements were met.

A. Regulatory Submittals

- Monthly Summary of Distribution System Coliform Monitoring
- NPDES Discharge Letter
- Conservation SAFER Report

Sample Test Result Standards			
Type of Sampling	Units of Measure	Detectable Limit for Reporting	Maximum Contaminant Level
Total Coliform	A	--	--
E. Coli	A	--	--
Nitrate as N	mg/L	0.20	10
Perchlorate (ClO ₄)	µg/L	1.0	6.0
Total Dissolved Solids	mg/L	--	500
2,3,7,8-TCDD Dioxin	µg/L	0.00000313	0.03
P= Present A= Absent mg/L = parts per million µg/L = parts per billion ng/L = parts per trillion			

Sample Date 11/14/2024	Sample Site Location Results									
	Chino 2	City 2	City 4A	Rialto 3	Rialto 5	Miro 3	EW-1	BLF Cactus	BLF 6-9	OPRT P
Total Coliform	A	A	A	A	A	A	A	A	A	A
E. Coli	A	A	A	A	A	A	A	A	A	A
Nitrate as N	3.3									
Perchlorate (ClO ₄)	1.8*			4.7*	<1.0	10*	140*			
Total Dissolved Solids	220	170	290	280	230	220	210	330	330	180
2,3,7,8-TCDD Dioxin			<0.00000313							

*Sample is from the well head so it is before disinfection & treatment. Treatment is performed before it goes into the distribution system. Water going into the distribution system is <1.0 (non-detect).

B. Sample Site Location Results

Rialto Distribution Sample Results						
November 2024						
Sample Location	Free Cl Res (Field)	Total Coliform	E. Coli	Apparent Color	Odor Threshold	Turbidity
CYCLE 1 - 11/05/24	mg/l	P/A	P/A	Color Units	TON	NTU
335 W. Rialto	1.09	A	A	<3.0	1	<0.10
1228 W. Merrill	1.24	A	A	<3.0	1	0.21
256 N. Fillmore	1.37	A	A	<3.0	1	<0.10
987 W. Grove	1.23	A	A	<3.0	1	<0.10
978 N. Driftwood	1.42	A	A	<3.0	1	<0.10
1451 N. Linden	1.06	A	A	<3.0	1	<0.10
469 W. Jackson	1.22	A	A	<3.0	1	<0.10
935 E. Mariposa	1.19	A	A	<3.0	1	<0.10
1000 N. Joyce	1.25	A	A	<3.0	1	<0.10
766 N. Chestnut	1.15	A	A	<3.0	1	<0.10
149 W. Victoria	1.22	A	A	<3.0	1	<0.10
313 E. McKinley	1.24	A	A	<3.0	1	<0.10
609 E. South	1.15	A	A	<3.0	1	<0.10
273 E. Alru	1.17	A	A	<3.0	1	<0.10
1161 S. Lilac	1.10	A	A	<3.0	1	<0.10
101 E. Valley	1.13	A	A	<3.0	1	<0.10
CYCLE 2 - 11/13/24	mg/l	P/A	P/A	Color Units	TON	NTU
210 N. Park	0.94	A	A			
101 S. Larch	1.02	A	A			
320 N. Wisteria	1.22	P	A			
861 W. Grove	1.49	A	A			
1168 N. Glenwood	1.13	A	A			
1320 N. Fitzgerald	1.11	A	A			
860 N. Willow	1.08	A	A			
209 E. Cornell	1.31	A	A			
643 E. Margarita	1.25	A	A			
1170 N. Terrace Rd.	1.03	A	A			
681 E. Erwin	1.26	A	A			
402 E. Merrill	1.24	A	A			
261 W. Wilson	1.22	A	A			
532 S. Iris	1.19	A	A			
281 W. Hawthorne	1.42	A	A			
379 W. Valley	1.21	A	A			

Rialto Distribution Sample Results

November 2024

Sample Location	Free Cl Res (Field)	Total Coliform	E. Coli	Apparent Color	Odor Threshold	Turbidity
	mg/l	P/A	P/A	Color Units	TON	NTU
CYCLE 3 - 11/18/24						
236 N. Willow	1.12	A	A			
775 E. Foothill	0.87	A	A			
878 N. Primrose	0.94	A	A			
369 E. Van Koevering	1.41	A	A			
274 W. Valencia	1.07	A	A			
1566 N. Fillmore	1.25	A	A			
932 N. Idyllwild	1.34	A	A			
644 N. Smoketree	1.14	A	A			
605 W. Rosewood	1.13	A	A			
1189 W. Second	0.90	A	A			
775 W. Rialto	1.15	A	A			
211 E. Wilson	1.17	A	A			
595 E. Huff	1.39	A	A			
1005 S. Riverside	1.41	A	A			
794 S. Verde	1.14	A	A			
1055 W. Bloomington	0.72	A	A			
CYCLE 4 - 11/26/24						
375 S. Cactus	1.10	A	A			
101 S. Linden	1.20	A	A			
234 N. Larch	1.10	A	A			
575 N. Driftwood	1.30	A	A			
1355 W. Shamrock	1.00	A	A			
992 N. Yucca	1.10	A	A			
481 W. Cornell	1.10	A	A			
158. E. Shamrock	1.10	A	A			
749 E. Holly	1.05	A	A			
545 E. Victoria	1.16	A	A			
200 N. Sycamore	1.13	A	A			
407 E. Allen	1.10	A	A			
399 E. Montrose	1.22	A	A			
856 S. Orange	1.19	A	A			
911 S. Cactus	1.29	A	A			
220 W. Valley	1.19	A	A			
P/A + Present or Absent						

C. Violations

No violations were received during this reporting period.

D. Source Water Total Dissolved Solids (TDS)

Veolia has a goal of maintaining an acceptable blended TDS level between all its sources. This goal is achieved by shifting production to or from the lowest TDS wells or purchased low TDS water while adhering to the overall water supply strategy and meeting system demands. The TDS was 214 mg/L for the month of November as compared to 256 mg/L in October. The TDS levels are below the secondary maximum contaminant level requirements.

III. HEALTH AND SAFETY

A. Monthly Safety Program Overview

Category	Monthly Statistic
Safety Training Topics	HAZWOPER-Emergency Responder Training Heat Illness Prevention for Supervisors Cal/OSHA Emergency Action Plan
Lost Time Incidents, count*	0
Recordable Incidents, count	0
Near Miss Incidents, count	7
Vehicle Incidents, count	0

*A lost time incident has not occurred in the past 4066 days.

IV. CHEMICAL USE

Sodium hypochlorite is the only chemical added to the water system. A total of 2322 gallons of sodium hypochlorite was used in November as compared to 2822 gallons used in October.

V. ELECTRICAL USE

Southern California Edison (SCE) has not provided all the data for November 2024. We will provide the data as it is received, thus will include yearly usage received to date.

SCE		kWh
Year	Month	Billed Usage
2023	November	564,667
2023	December	373,789
2024	January	208,007
2024	February	186,792
2024	March	421,268
2024	April	463,324
2024	May	428,050
2024	June	629,344
2024	July	550,202
2024	August	650,431
2024	September	562,739
2024	October	422,516

VI. WATER QUALITY COMPLAINTS

No complaints were received during this reporting period.

VII. OPERATIONS UPDATE

The overall operational strategy is to meet the daily water demand. The City of Rialto water system has six operational wells, one of which is owned by the County of San Bernardino and operated by Veolia; Oliver P. Roemer Treatment Plant (OPRTP), which is jointly owned by the City (25%) and West Valley Water District (WVWD); purchased water through the Baseline Feeder (BLF) system from San Bernardino Valley Municipal Water District (SBVMWD); and, if required to meet demand, additional water can be supplied by the City of San Bernardino (CSB) through the BLF for emergency supply only with no guarantee of actual delivery. Water produced from City Well 4A discharges into the BLF and its production is included in deliveries from that shared transmission line when City Well 4A is in service.

The overall pumping strategy is based on adjudicated rights, well availability, remediation requirements, and quality of source, cost to operate, and varying weather conditions. TDS effluent concentrations for the City of Rialto WWTP are taken into consideration when operating the facilities and water sources.

A. Operational Wells

All wells were operational.

B. Valve Activity

On the basis of information collected in 2019, Veolia now has a baseline assessment of all valves and has initiated a new cycle of valve exercising. 23 valves were exercised for the month of November.

Valve Turning Progress	
	Valves Turned
2020	530
2021	340
2022	463
2023	750
2024	335

C. Hydrant Flushing

There are 63 hydrant/dead ends that are flushed annually to maintain water quality. Five flushings were performed in November.

Hydrant/Dead End Flushing Progress	
	2024
January	0
February	3
March	9
April	0
May	5
June	0
July	5
August	20
September	0
October	6
November	5

Total	53
Progress % (84)	

D. Sanitary Survey

The last sanitary survey was completed by the Department of Drinking Water (DDW) in 2015. Veolia has reviewed all the regulatory conditions required and is prepared for the sanitary survey. DDW performed field site visits on May 22 and August 22, 2024. The results of the sanitary survey were received on September 19, 2024. Veolia will reach out to DDW regarding the minor deficiencies.

VIII. ASSET MANAGEMENT

The following work orders were completed for the month of November:

- Preventive Maintenance –15
- Corrective Maintenance –1
- Predictive Maintenance –0

48– PMs planned for December 2024

A. Main Breaks, Service Leaks, Adverse Water Quality and Health/Safety Issues

Corrective Work Order labor hours were dedicated to seven pipe line and two hydrant repairs.

B. Major Equipment and/or Machinery Outages

All wells were operational.

IX. RAINFALL TOTALS

SEASON	JUL	AUG	SEP	OCT	NOV	DEC	JAN	FEB	MAR	APR	MAY	JUN	TOTAL
2019-20	0.00	0.00	0.00	0.00	0.64	1.52	0.23	0.33	1.18	3.42	0.00	0.00	7.32
2020-21	0.00	0.00	0.00	0.00	0.85	1.02	2.55	0.05	1.13	0.00	0.00	0.00	5.60
2021-22	0.53	0.00	0.00	0.55	0.00	7.27	0.00	0.00	0.77	0.45	0.03	0.00	9.60
2022-23	0.00	0.00	0.24	0.38	2.15	1.80	5.06	4.14	7.73	0.20	0.59	0.00	22.29
2023-24	0.00	2.62	0.00	0.09	0.60	1.18	1.00	10.38	1.87	0.53	0.34	0.00	18.61
2024-25	0.00	0.00	0.00	0.00	0.45								0.45

July 24- June 25		=	0.45 INCHES
YEAR TO DATE FOR 2024		=	14.57 INCHES
AVG. RAINFALL FOR LAST FIVE YEARS		=	8.87 INCHES
AVG. RAINFALL FOR SAN BERNARDINO COUNTY FOR THE LAST 100 YEARS :		=	16.25 INCHES

2024	Jan	Feb	Mar	Apr	May	Jun	Jul	Aug	Sep	Oct	Nov	Dec	Total
Totals	1.00	10.38	1.87	0.53	0.34	0.00	0.00	0.00	0.00	0.00	0.45		14.57

Highland - Los Angeles Basin - Station 251

Month Year	Total ETo (in)	Total Precip (in)	Avg Sol Rad (Ly/day)	Avg Vap Pres (mBars)	Avg Max Air Temp (°F)	Avg Min Air Temp (°F)	Avg Air Temp (°F)	Avg Max Rel Hum (%)	Avg Min Rel Hum (%)	Avg Rel Hum (%)	Avg Dew Point (°F)	Avg Wind Speed (mph)	Avg Soil Temp (°F)
Jan 2024	2.19	1.25	257	7.9 K	65.1	41.9	52.5	80	37	58 K	37.5 K	3.3 K	52.2
Feb 2024	2.08	8.56	268	9.5 K	62.4	44.6	52.9	88	50	69 K	42.6 K	3.2 K	53.8
Mar 2024	3.58	2.31	384	9.5	65.1 K	45.0	54.7	87	44	66	43.0	4.2 K	57.4
Apr 2024	5.12	0.63 K	517	10.4	73.5 K	47.5 K	59.7 K	85	36	60 K	44.9 K	4.1	60.7
May 2024	5.95	0.02 K	579 K	13.0 K	76.8	53.0 K	63.3 K	89 K	41 K	66	51.5	4.6 K	66.1 K
Jun 2024	7.42	0.00	659	15.5	89.7	59.6	73.8	83	34	56	56.2	4.5	68.8
Jul 2024	8.79	0.01	666	16.5	99.7 K	66.3	82.7	72	24	43	57.8	4.4 K	72.8
Aug 2024	8.14	0.75	617	14.7 K	98.2 K	64.8	80.7 K	70	21	41 K	54.6 K	4.3	76.1
Sep 2024	5.61	1.03 K	470 K	14.9 K	91.4 K	62.0	75.5 K	77 K	29 K	52 K	55.1 K	3.8 K	73.2 K
Oct 2024	4.65	0.56	405	11.5	86.9	56.6	70.6	73	25	45	47.4	3.4 K	67.5
Nov 2024	2.80	1.28	292	7.0	71.7	43.7	56.9	73	24	45	34.1	3.2 K	56.6
Tots/Avg	56.33	16.4	465	11.9	80.0	53.2	65.8	80	33	55	47.7	3.9	64.1

RIALTO WASTEWATER
MONTHLY OPERATIONS REPORT

Reporting Period:
November 2024

Prepared for: - Rialto Water Services



Prepared by: - Veolia Water West Operating Services



RIALTO WASTEWATER OPERATIONS AND MAINTENANCE REPORT

Contents

EXECUTIVE SUMMARY

- 1. Collection System / Customer Service Log**
 - a. Collection System Activities
 - b. S.S.O. dates
 - c. Customer Service Call Outs
- 2. Wastewater Treatment Plant - Monthly Overview**
 - a. Significant events during the month
- 3. Treatment Facility Performance / Laboratory Activities**
 - a. See attached Monthly Performance Summary
 - b. Summary of Notices and Laboratory Tests / Reports filed with government agencies
 - c. Effluent Specifications Exceedance Discussion
- 4. Monthly Safety Program Overview**
- 5. Biosolids, Chemicals, and Utilities**
 - a. Monthly Biosolids Production
 - b. Monthly Chemical Consumption
 - c. Monthly Utilities Consumption
- 6. Odor Complaints / Actions Taken**
- 7. Major Equipment and/or Machinery Outages**
- 8. Outside Agency Activities during the Month**
 - a. Government agency or property insurance inspections
 - b. Government agency environmental, health, or safety tests/monitoring
 - c. Government agency notice of violation received
 - d. Government agency monitoring
 - e. Other matters of concern
- 9. Complaint Logs**

TABLES

- Treatment Facility – Monthly Performance Summary
- Collection System- Monthly Pipe Cleaned

RIALTO WASTEWATER

MONTHLY OPERATIONS REPORT

EXECUTIVE SUMMARY

Highlights of this month’s Wastewater O&M report include the following:

- The treatment plant performed well and met all compliance parameters.
- There was one residential call for sewer collection issues.

1. Collection System/Customer Service Log

a. Collections group activities this month:

Category	Current Month Statistics	Prior Month Statistics	2024 Year to Date Statistics
Sanitary sewers are cleaned using the conventional method, including feet, which includes “Hot spot cleaning.”	24,240	21,054	233,976
Sanitary sewers assessed using the SL-RAT method, feet	3,748	11,876	27,656
CCTV Inspection, miles (26 is the annual goal)*	2.33	2.59	26.1
Manhole Inspections	0	8	53
USA Dig Alert Markings, count	30	13	245
Residential call outs	1	2	30
Sanitary sewer overflows	0	0	6

b. S.S.O. dates: N/A

c. Customer Service Call Outs – See Item 9 for details.

2. Wastewater Treatment Plant – Monthly Overview

- NPDES discharge compliance parameters were achieved.

a. Significant events during the month were: None.

3. Treatment Facility Performance/Laboratory Activities

a. See the attached Table 1 Monthly Performance Summary.

b. Summary of Notices and Laboratory Tests/Reports filed with government agencies.
The monthly submittal of State/Federal discharge monitoring reports was completed promptly.

c. Effluent specification exceedance discussion
See Section 2 above. N/A

4. Monthly Safety Program Overview

Category	Monthly Statistic
Safety Training Topics	PPE, Hearing Conservation, Respiratory Protection, Excavation/Trenching, Powered Industrial Truck
Lost Time Incidents count*	0
Recordable Incidents, count	0
Near Miss Incidents, count	0
Vehicle Incidents, count	0

*A lost time incident has not occurred since 9-3-2020, totaling 1,548 days.

5. Biosolids, Chemicals, and Utilities

a. Monthly Biosolids Production

Biosolids	Current Month Statistics	Prior Month Statistics	2024 Year-to-Date Statistics
Wet Tons Produced	1,014.27	1,559.77	11,891.92

b. Monthly Chemical Consumption

Chemical	Current Month Gallons Used	Prior Month Gallons Used
Sodium Hypochlorite, Tertiary Disinfection	25,639.8	25,215.3
Sodium Bisulfite, Discharge Dechlorination	8,114	10,408
Ferrous Chloride, Digester Gas Conditioning	3,842	3,458
Polymer, Gravity Belt Thickener	454	384
Polymer, Belt Filter Press	564	606
Alum, Tertiary Filters	1	2

c. Monthly Utilities Consumption

Utility	Current Month Statistics	Prior Month Statistics
Electricity WWTP, KWH	**	**
Electricity Lilac LS, KWH	**	707
Electricity Sycamore LS, KWH	**	492
Electricity Ayala LS, KWH	**	7532
Electricity Agua Mansa LS, KWH	**	4257
Electricity Cactus LS, KWH	1492	1310
Electricity Ramrod LS, KWH	514	494
Frisbee Park LS, KWH	**	624
El Rancho Verde LS, KWH	1694	1368
Natural Gas WWTP, Therms	3651	2684

* LS is in bypass mode, pending CIP completion

** SCE has not updated account access for the City.

6. Odor Complaints Received/Actions Taken

No odor complaints were received this month.

7. Major Equipment and/or Machinery Outages

- Sludge Holding Tank
- Aeration Basin #1 is currently offline.
- Gravity Belt Thickener #1

8. Outside Agency Activities during the Month

- a. Government agency or property insurance inspections
None
- b. Government agency environmental, health, or safety tests/monitoring
Permit testing was completed for this month
- c. Government agency notices of violation received
No notices were received.
- d. Government agency monitoring
Routine monitoring reports were submitted.
- e. Other matters of concern
None

9. Customer Service Callout Details Log

Date	Address	Comments	Personnel	Manhole	To Manhole
------	---------	----------	-----------	---------	------------

11/12/2024	3726 N. Live Oak	The customer had a blocked lateral, which a plumber had released. Further inspection revealed a hole in their lateral. A CCTV inspection of the city line showed everything was working correctly.	BVO	NA	NA
------------	------------------	--	-----	----	----

Table 1 Summary

Table 1 Summary

November 2024

Date	Rialto	Rialto			Rialto	Rialto WRF Effluent			Rialto WRF Influent		Rialto WRF Effluent		
	Influent daily flow	Effluent Flow	Influent BOD	Influent BOD	Influent BOD Load	Effluent BOD	Effluent BOD Load	BOD % Removal	Influent TSS	Influent TSS Load	Effluent TSS	Effluent TSS Load	TSS % Removal
	MGD	MGD	mg/l	mg/l	lbs/day	mg/L	lbs/day	%	mg/L	lbs/day	mg/L	lbs/day	%
11/1/2024	6.49	6.94	24.0	24.0	12,990	2.7	156.27	98.90					
11/2/2024	6.75	6.58											
11/3/2024	7.16	7.45											
11/4/2024	7.33	6.89	29.0	29.0	17,728	2.8	160.90	99.00	230.00	14,060.00	0.80	46.00	99.70
11/5/2024	7.14	7.54											
11/6/2024	6.96	7.53											
11/7/2024	6.75	6.58											
11/8/2024	6.71	6.73	29.0	29.0	16,229								
11/9/2024	6.65	6.86				<2.5	143.03						
11/10/2024	6.96	7.51											
11/11/2024	7.39	7.34											
11/12/2024	7.57	7.12	30.0	30.0	18,940	<2.5	148.45	99.20	250.00	15,783.00	0.60	36.00	99.80
11/13/2024	5.86	7.06											
11/14/2024	6.95	6.82											
11/15/2024	6.45	7.18	27.0	27.0	14,524	2.5	149.70	99.10					
11/16/2024	6.62	6.65											
11/17/2024	6.86	7.19											
11/18/2024	7.06	7.20	32.0	32.0	18,842				270.00	15,898.00			
11/19/2024	6.55	7.14				3.0	178.64				0.50	30.00	
11/20/2024	6.87	6.79											
11/21/2024	6.58	6.59											
11/22/2024	6.69	6.91	31.0	31.0	17,296	3.9	224.75	98.70					
11/23/2024	6.52	7.28											
11/24/2024	6.95	6.95											
11/25/2024	6.83	7.48	41.0	41.0	23,355	3.8	237.06	99.10	280.00	15,949.00	1.00	62.00	99.60
11/26/2024	6.98	6.90											
11/27/2024	7.00	7.03											
11/28/2024	7.11	7.26											
11/29/2024	7.08	7.39											
11/30/2024	6.54	6.43											
Minimum	5.86	6.43	24.0	24.0	12,990	<2.5	143.03	98.70	230.00	14,060.00	0.50	30.00	99.60
Maximum	7.57	7.54	41.0	41.0	23,355	3.9	237.06	99.20	280.00	15,949.00	1.00	62.00	99.80
Total	205.36	211.32	2,430	2,430	139,904	<23.7	1398.81	99.40	1,030.00	61,691.00	2.90	174.00	299.10
Average	6.85	7.04	30.4	30.4	17,488	<3.0	174.85	99.00	258.00	15,423.00	0.73	44.00	99.70

Table 2 Summary

Table 2 summary

November 2024

Date	Rialto	Rialto WRF\Effluent		Rialto WRF\Eff		Rialto WRF\Effluent		Rialto	Rialto
	Influent Conductivity (uS/cm)	Eff Conductivity Daily Ave (uS/cm)	Influent COD mg/l	Final Effluent COD mg/l	Influent TDS mg/l	Filter Effluent TDS mg/l	EFF FINAL TDS mg/L	Influent Inorganic Nitrogen mg/L	Effluent Inorganic Nitrogen mg/l as N
11/1/2024	1250.00	856.00							
11/2/2024	1177.00	845.00							
11/3/2024	1079.00	856.00							
11/4/2024	1449.00	848.00							
11/5/2024	1350.00	902.00			450.00	390.00	430.00	39.00	6.70
11/6/2024	1336.00	916.00							
11/7/2024	1356.00	917.00	630	22.0					
11/8/2024	1287.00	904.00							
11/9/2024	1072.00	934.00							
11/10/2024	1340.00	943.00							
11/11/2024	1419.00	928.00							
11/12/2024	1254.00	931.00							
11/13/2024	1247.00	952.00							
11/14/2024	1244.00	938.00							
11/15/2024	1355.00	936.00							
11/16/2024	1234.00	945.00							
11/17/2024	1257.00	972.00							
11/18/2024	1207.00	957.00							
11/19/2024	1339.00	949.00							
11/20/2024	1232.00	951.00							
11/21/2024	1510.00	950.00							
11/22/2024	1351.00	949.00							
11/23/2024	1160.00	945.00							
11/24/2024	1189.00	947.00							
11/25/2024	1352.00	884.00							
11/26/2024	1483.00	873.00							
11/27/2024	1487.00	876.00							
11/28/2024	1630.00	907.00							
11/29/2024	1799.00	936.00							
11/30/2024	1459.00	964.00							
Minimum	1072.00	845.00	630	22.0	450.00	390.00	430.00	39	6.70
Maximum	1799.00	972.00	630	22.0	450.00	390.00	430.00	39.00	6.70
Average	1330.00	920.00	630	22.0	450.00	390.00	430.00	39.00	6.70

Table 3 Summary

Table 3 Summary

November 2024

Date	Rialto WRF Influent		Rialto WRF Effluent		Rialto WRF Eff		Rialto WRF Effluent		Transfer	Transfer	Rialto	Transfer Data
	Influent pH	24 hr avg. effl. pH	Effluent Temp	Effluent Ammonia	Effluent Total Coliform	Effluent Coliform 7 Day Median	Effluent Cyanide, Free Available	Eff Di(2-ethylhexyl) phthalate (DEHP)	FIT-8321 ADG #2 Flow	FIT-8321 ADG #2 Flow	Natural Gas Daily Use	FIT-8321 ADG #2 Flow
	SU	SU	Deg C	mg/L	MPN/100mL	MPN/100ML	ug/L	ug/l	cu ft/day	cu ft/day	cf/day	cu ft/day
11/1/2024	7.45	7.01	25.40		<1.8	<1.80			135245.00	135245.00	21300.00	135245.00
11/2/2024	7.52	7.02	25.20		<1.8	<1.80			142321.00	142321.00	20400.00	142321.00
11/3/2024	7.51	7.01	25.40		<1.8	<1.80			143904.00	143904.00	23800.00	143904.00
11/4/2024	7.61	7.03	24.90	<0.10	<1.8	<1.80			127631.00	127631.00	10600.00	127631.00
11/5/2024	7.43	7.01	24.50		<1.8	<1.80		1.40	147161.00	147161.00	4500.00	147161.00
11/6/2024	7.59	6.97	24.50		<1.8	<1.80			130721.00	130721.00	16700.00	130721.00
11/7/2024	7.54	6.96	23.20		1.8	<1.80			134673.00	134673.00	21500.00	134673.00
11/8/2024	7.48	6.96	23.40		<1.8	<1.80			151933.00	151933.00	18500.00	151933.00
11/9/2024	7.43	6.95	23.90		<1.8	<1.80			133813.00	133813.00	18100.00	133813.00
11/10/2024	7.43	6.96	24.20		1.8	<1.80			136240.00	136240.00	20500.00	136240.00
11/11/2024	7.45	6.96	24.50		<1.8	1.80			152293.00	152293.00	16400.00	152293.00
11/12/2024	7.51	6.98	24.30	<0.10	2.0	<1.80	<2.0		130987.00	130987.00	18000.00	130987.00
11/13/2024	7.50	6.97	24.10		<1.8	<1.80			151844.00	151844.00	8200.00	151844.00
11/14/2024	7.52	7.00	24.00		<1.8	<1.80			136390.00	136390.00	900.00	136390.00
11/15/2024	7.33	7.00	24.40		<1.8	<1.80			126457.00	126457.00	11700.00	126457.00
11/16/2024	7.34	6.95	23.60		<1.8	<1.80			143433.00	143433.00	19300.00	143433.00
11/17/2024	7.47	7.20	23.10		<1.8	<1.80			139599.00	139599.00	21000.00	139599.00
11/18/2024	7.49	7.02	23.30	<0.10	<1.8	<1.80			140620.00	140620.00	18000.00	140620.00
11/19/2024	7.38	7.03	23.60		<1.8	<1.80			146002.00	146002.00	18700.00	146002.00
11/20/2024	7.44	6.95	23.30		<1.8	<1.80			160853.00	160853.00	18600.00	160853.00
11/21/2024	7.44	7.00	23.50		<1.8	<1.80			146501.00	146501.00	17600.00	146501.00
11/22/2024	7.37	6.98	23.40		2.0	<1.80			141022.00	141022.00	19100.00	141022.00
11/23/2024	7.28	6.95	23.00		<1.8	<1.80			151388.00	151388.00	18400.00	151388.00
11/24/2024	7.13	6.84	23.70		<1.8	<1.80			144886.00	144886.00	17200.00	144886.00
11/25/2024	6.70	7.00	23.60	<0.10	<1.8	<1.80			146487.00	146487.00	18300.00	146487.00
11/26/2024	7.49	7.05	22.20		<1.8	<1.80			150493.00	150493.00	17700.00	150493.00
11/27/2024	7.54	7.05	22.90		<1.8	<1.80			155057.00	155057.00	17300.00	155057.00
11/28/2024	7.46	6.95	21.80		<1.8	<1.80			162064.00	162064.00	18800.00	162064.00
11/29/2024	7.65	6.90	21.10		2.0	<1.80			152655.00	152655.00	2800.00	152655.00
11/30/2024	7.64	7.00	20.80		<1.8	<1.80			168755.00	168755.00	2300.00	168755.00
Minimum	6.70	6.84	20.80	<0.10	<1.8	<1.80	<2.0	1.40	126457.00	126457.00	900.00	126457.00
Maximum	7.65	7.20	25.40	<0.10	2.0	1.80	<2.0	1.40	168755.00	168755.00	23800.00	168755.00
Average	7.44	6.99	23.60	<0.10	<1.8	<1.80	<2.0	1.40	144381.00	144381.00	15873.00	144381.00

Monthly Sewer Line Cleaned

Pipe Cleaning - November 2024

Map Centre Coords
x: 2056707, y: 568600
Date Printed: 12/23/2024
Scale: 1:140000

