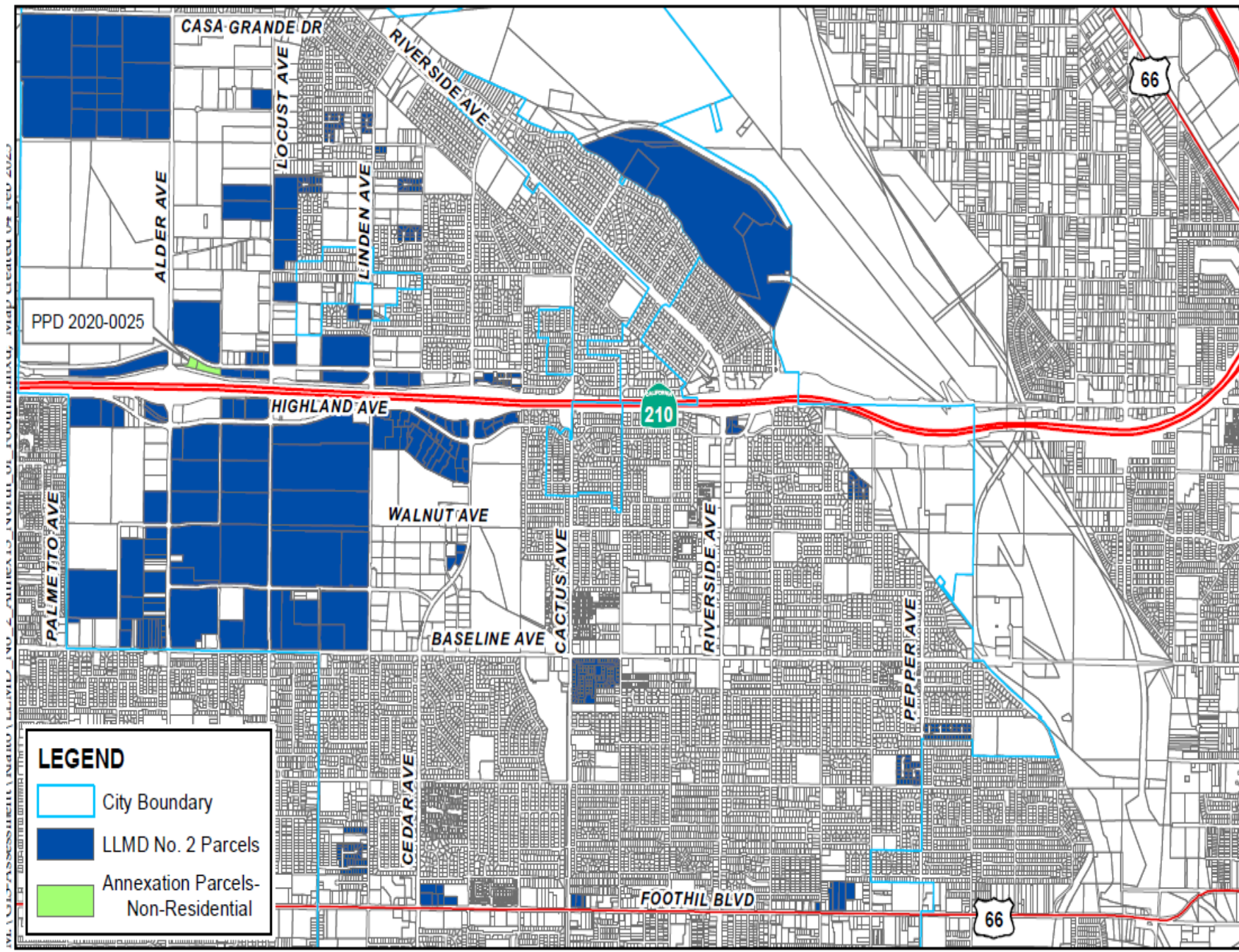
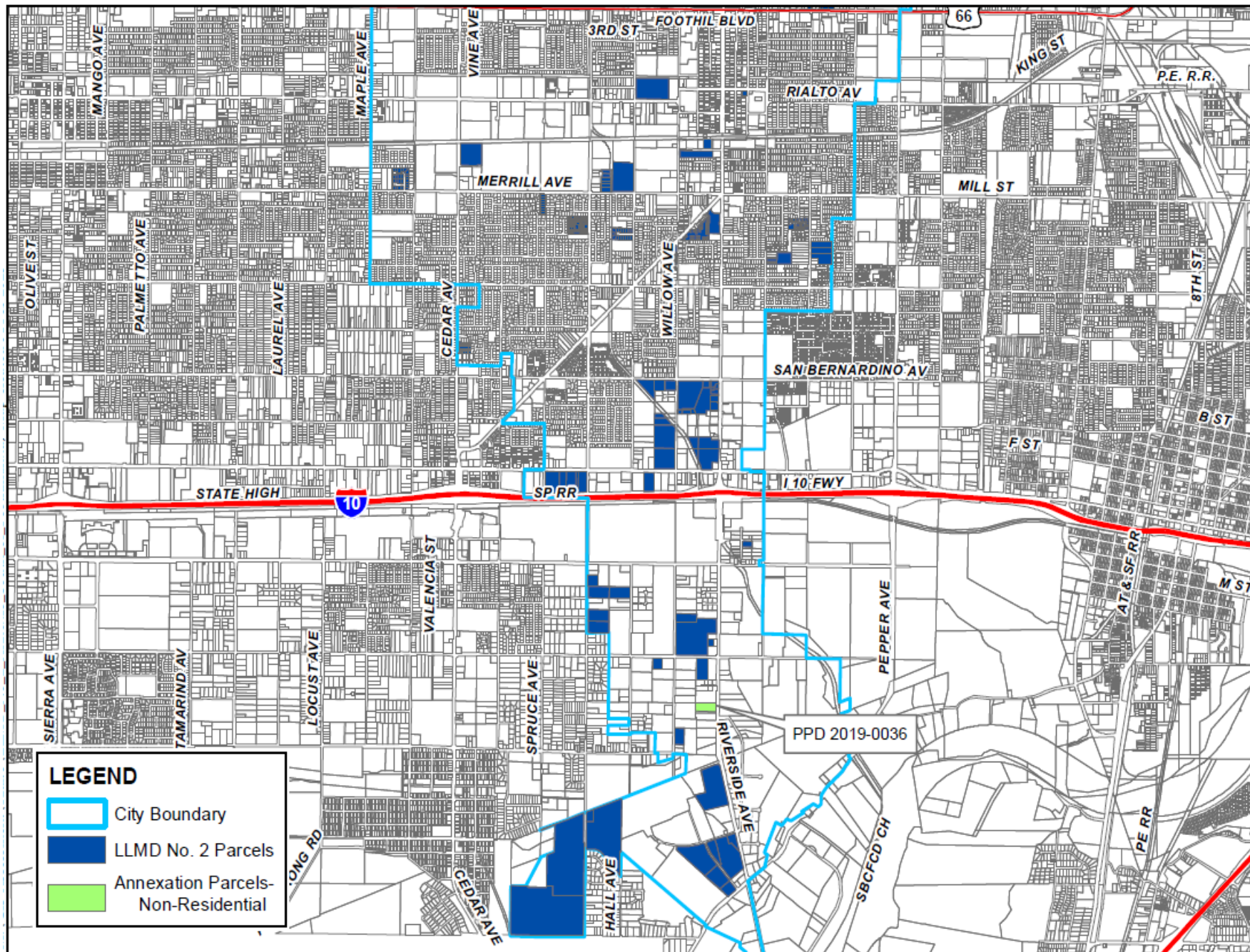


# **Landscape and Lighting Maintenance District No. 2**



# North of Foothill Blvd. (Non-Residential Annexation Parcels)



# South of Foothill Blvd. (Non-Residential Annexation Parcels)

**LEGEND**

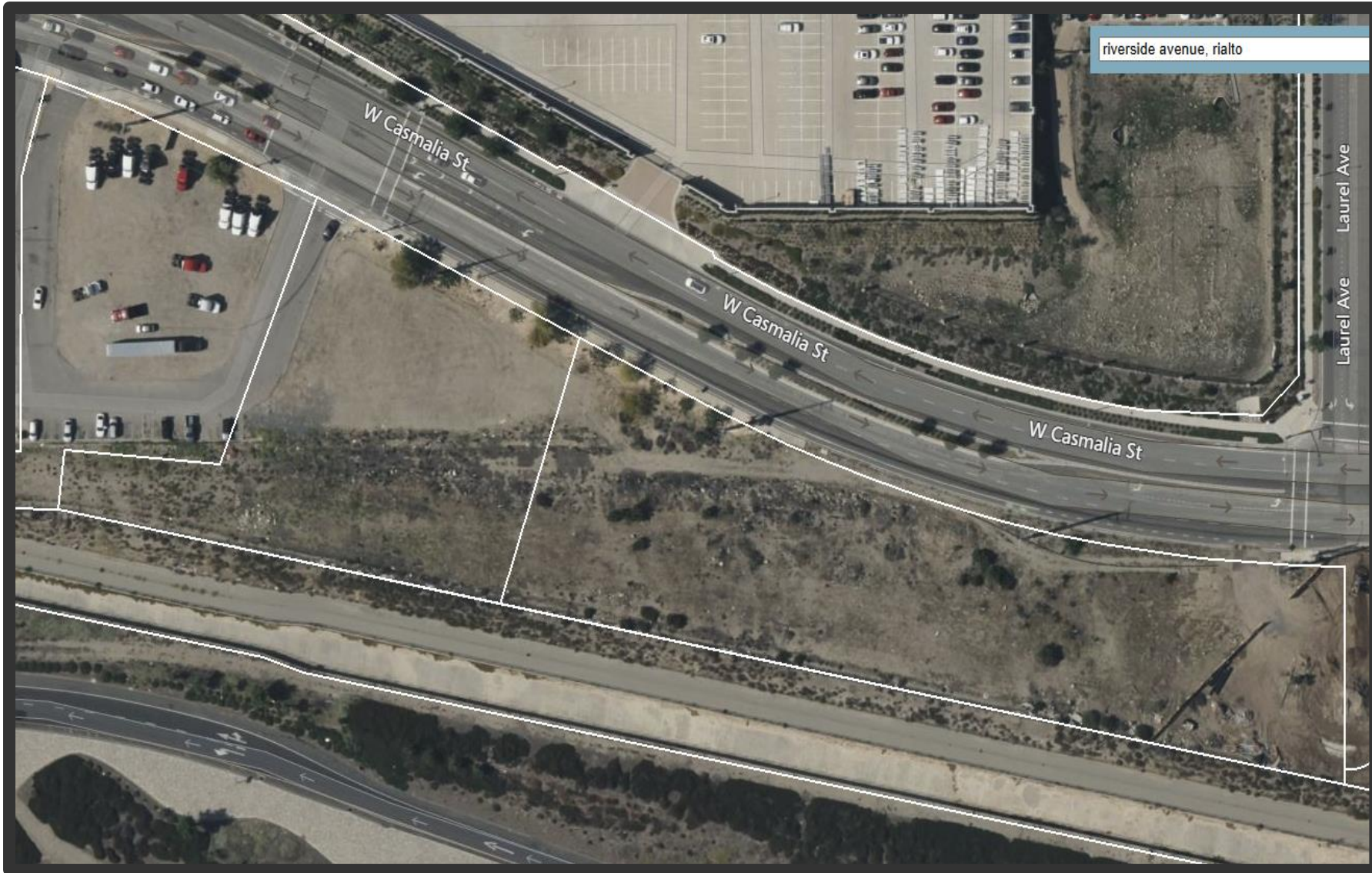
- City Boundary
- LLMD No. 2 Parcels
- Annexation Parcels-  
Non-Residential

PPD #	LOCATION
PPD 2019-0036	West of Riverside Avenue and north of Industrial Drive
PPD 2020-0025	South of West Casmalia Street and west of Laurel Avenue

**Non-  
Residential  
PPD**



PPD  
2019-0036



PPD  
2020-0025