



Neighborhood Meeting

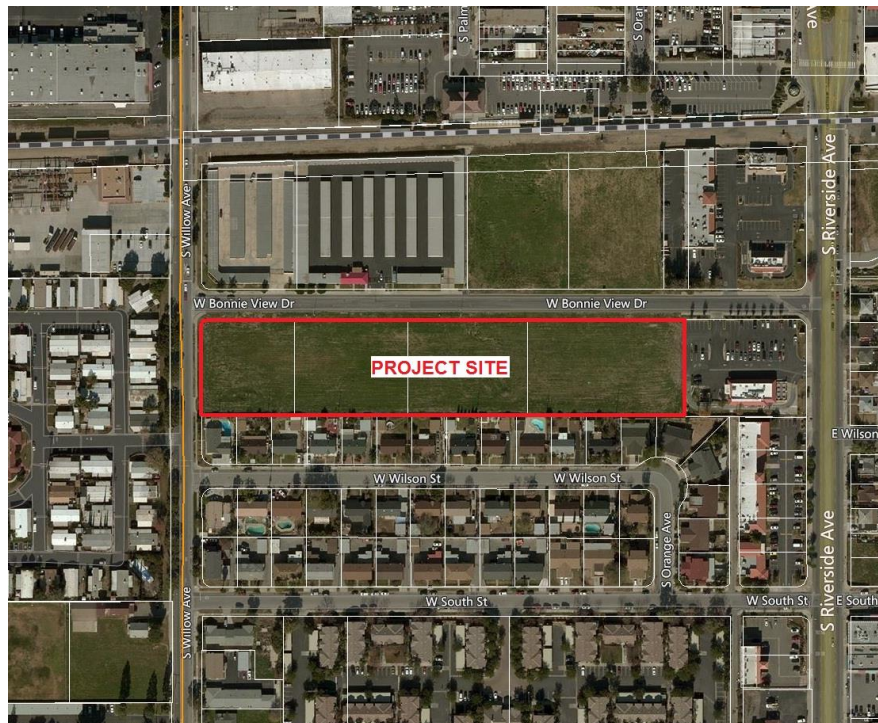
Thursday, November 16, 2017 at 6:00 p.m.
Rialto City Hall – 150 S. Palm Avenue, Rialto, CA 92376
Council Chambers

The City of Rialto is hosting a neighborhood meeting and all members of the public are invited. The purpose of the meeting is to present and discuss a proposal to develop 56 detached single-family residences on 4.54 acres of land located at the southeast corner of Bonnie View Drive and Willow Avenue (See project site map below). The structures will come in both one (1) and two (2) story product, ranging in size from 1,400 square feet to 2,000 square feet. In conjunction with the project, the applicant has filed a Specific Plan Amendment application to change the zoning designation of the project site from Support Commercial (S-C) to Multi-Family Residential (MFR).

Project Applicant – RBV Investment Group, LLC

Related Files – Specific Plan Amendment No. 2017-0001 (SPA 2017-0001)

Project Site – 4.54 acres of land located at the southeast corner of Bonnie View Drive and Willow Avenue (APNs: 0131-021-36, -37, -38, & -39).



Meeting Location – Rialto City Hall Council Chambers at 150 S. Palm Avenue, Rialto, CA 92376.

Meeting Time – Start time 6:00 p.m. – Q & A and Comment Section to follow presentation.

If you have any questions or need any additional information please contact the Planning Division at (909) 820-2535 or at planning@rialto.ca.gov.