



+

**canvus**

# Who We Are



**manufacturer of products  
made from retired wind turbine blades**

# Our Mission

Inspiring communities of  
*"sustainability in motion"*  
by uniting retired materials to  
create exceptional products





# Canvus Inspiration



**120 – 200 ft long**

15,000-40,000 lbs

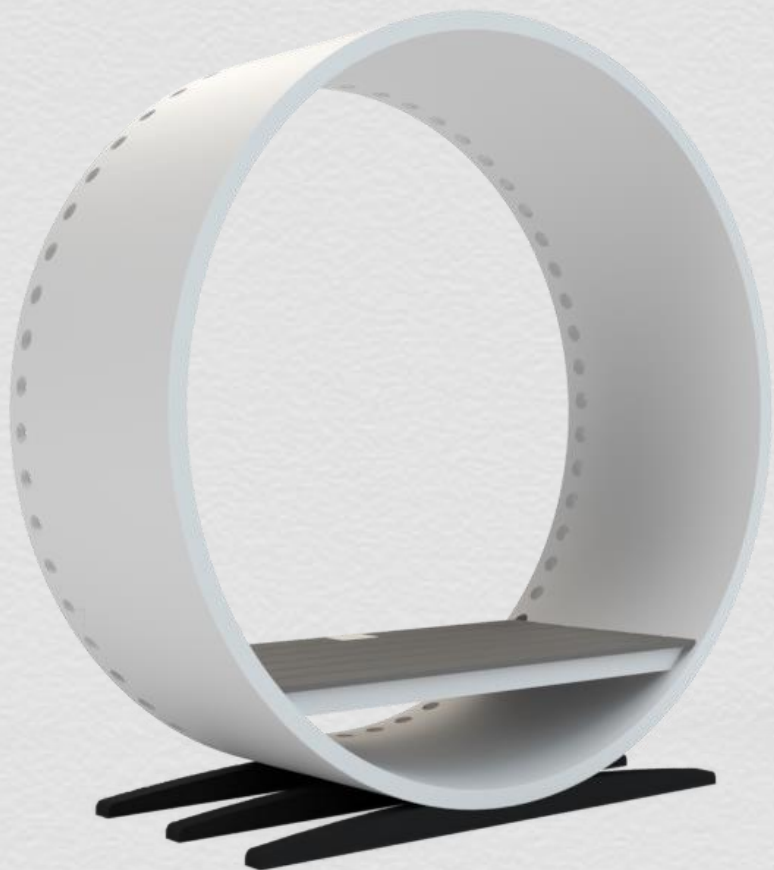
**5,000–8,000**

Blades reach the  
end of their life  
each year

Their size and  
durable  
material make  
them **difficult to  
recycle**

For years, Canvus has been working with  
the renewable energy industry to find a  
solution.

**Each blade can be reimagedined into 45-  
50 products, extending their lifes pan  
by 20-40 years.**



deborah



belle



mimi



**canvus**  
**crescent**  
style



carole



finley

canvus  
**organic**  
style



faye



beacon

rose







Product Makeup

# Retired Materials



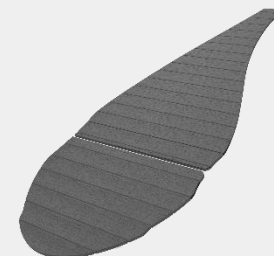
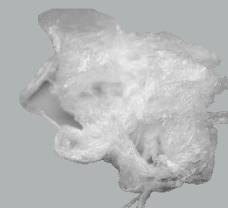
## rubber

Recycled material made from post-industrial and post-consumer sources like tires and shoes.



## composite lumber

Recycled material made from plastic shrink-wrap and sawdust from wood milling operations



## mixed plastics

Recycled material made from post-consumer and post-industrial packaging like milk jugs, containers, and bottles.



## thermally modified lumber

Sustainably harvested wood that is treated using only heat and steam. Eliminates the need for chemicals and increases material lifespan

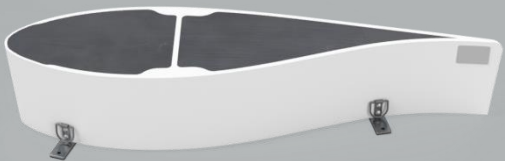


# Product Makeup

## Finishes

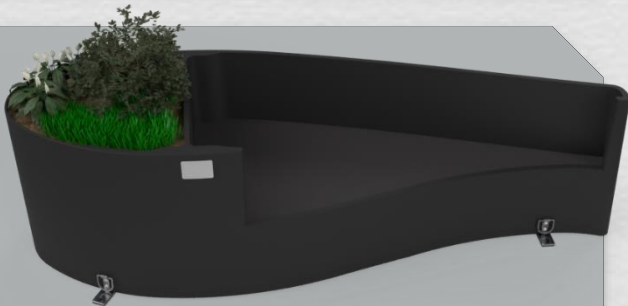
### brilliant white

Designed with history in mind, the Brilliant White color pays homage to the original finish of the turbine blade.



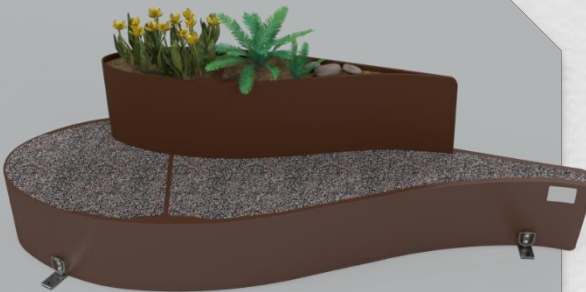
### cracked pepper

Born at the intersection of art and function, this sleek Cracked Pepper gray stands out in the modern world.



### dark walnut

Designed for Parks, Dark Walnut praises and emulates the beauty of nature, and our environment



### PAR (Primed + Ready)

Primed and Ready is a special coating we apply to the products allowing them to be painted. Engage with your local artists, students, and citizens to use our products as a canvas.





# Share and Connect

meet **mimi**

made from a wind turbine blade

to: **Our Citizens and Visitors**

We hope that this bench provides inspiration to our wonderful citizens and visitors. Elston City is committed to building a more sustainable future.

from: **Your Mayor, Ellen Smith**



by **canvus**



[Read the Story](#)

# Marketplace

**National Parks: 423**

**State Parks: 6,600**

Park Buildings  
Campgrounds  
Playgrounds  
Trails

**Cities: 19,495**

Government Buildings  
Parks  
Recreation Areas  
Downtown Areas

**Event Venues:**

**1,500**

Entrances  
Open Spaces  
Walkways

**Renewable Energy:**

**12,000 companies**

Corporate Offices  
Manufacturing/DCs  
Wind Farm Entrances

**Large Corporations:**

**20,140**

Corporate Campuses  
Manufacturing/DCs  
Consumer Locations

**Hotels & Resorts:**

**22,000**

Entrances  
Pools/Beaches  
Trails  
Outdoor Dining Areas

**Shopping Malls:**

**116,000**

Entrances  
Open Spaces  
Outdoor Dining Areas

**Schools:**

**K-12 130,930**

**trade schools 7,100**

**universities 3,900**

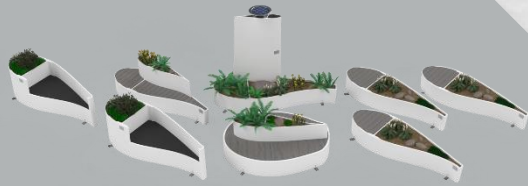
Campus Buildings  
Open Spaces  
Athletic Facilities

**Hospitals:**

**6,100**

Entrances  
Open Spaces  
Walkways

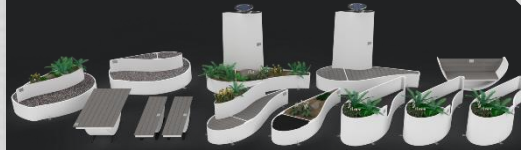
# Collections



## Welcome Blade Collection

- 1x **beacon** planter
- 1x **rose** bench or planter
- 1x **gus** bench or planter
- 2x **faye** hybrid
- 1x **fincher** hybrid
- 2x **finley** bench

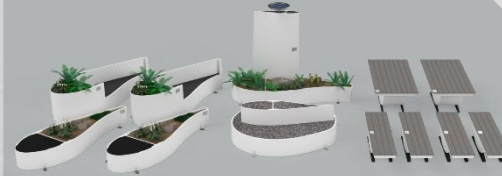
**8 Products**  
**\$37,893**



## Connect Blade Collection

- 2x **beacon** planter
- 2x **rose** bench or planter
- 1x **gus** bench or planter
- 1x **belle** chair
- 1x **carole** table
- 3x **faye** hybrid
- 1x **fincher** hybrid
- 2x **mimi** bench

**13 Products**  
**\$64,421**



## Gather Blade Collection

- 1x **beacon** planter
- 1x **rose** bench or planter
- 2x **carole** table
- 2x **faye** hybrid
- 2x **fincher** hybrid
- 4x **mimi** bench

**12 Products**  
**\$46,631**



## Experience Blade Collection

- 1x **deborah** swing
- 1x **carole** table
- 1x **beacon** planter
- 1x **rose** bench or planter
- 2x **gus** bench or planter
- 1x **belle** chair
- 3x **faye** hybrid
- 2x **finley** bench
- 2x **mimi** bench
- 1x **fincher** hybrid

**15 Products**  
**\$72,359**



# How To Buy

## Traditional Purchasing

- Grants
- Federal funds
- Budget

## Donations

- Canvus Donors
- Your Community



## Recipients:

- ✓ **Sustainability**
- ✓ **Reimagination**
- ✓ **Inspiration**

**parks**  
**cities**  
**schools**  
**universities**

## Who is a Donor:

### Canvus Donors

**renewable energy  
companies**  
**technology companies**  
**retailers**  
**consumer goods mfg.**

### Your Community

**local businesses**  
**citizens**  
**endowment**  
**alumni**  
**non-profit groups**

**canvus**  
a canvas for all of us

# Our Purpose

## Delivering Excellent Products

**We design and deliver functional art to communities across the United States.**

- Organic Designs
- Uniting Retired Materials
- Beautiful Finishing Options

## Sharing and Connecting

**We hope to educate and inspire others to share and tell a story.**

- Message of Kindness
- Educating on Sustainability
- Inspiring Others

## Supporting Communities

**We support the advocates of citizens, students, visitors, customers, and employees.**

- Donor + Recipient Initiatives
- A Canvas for Community Expression
- Events Celebrating Communities