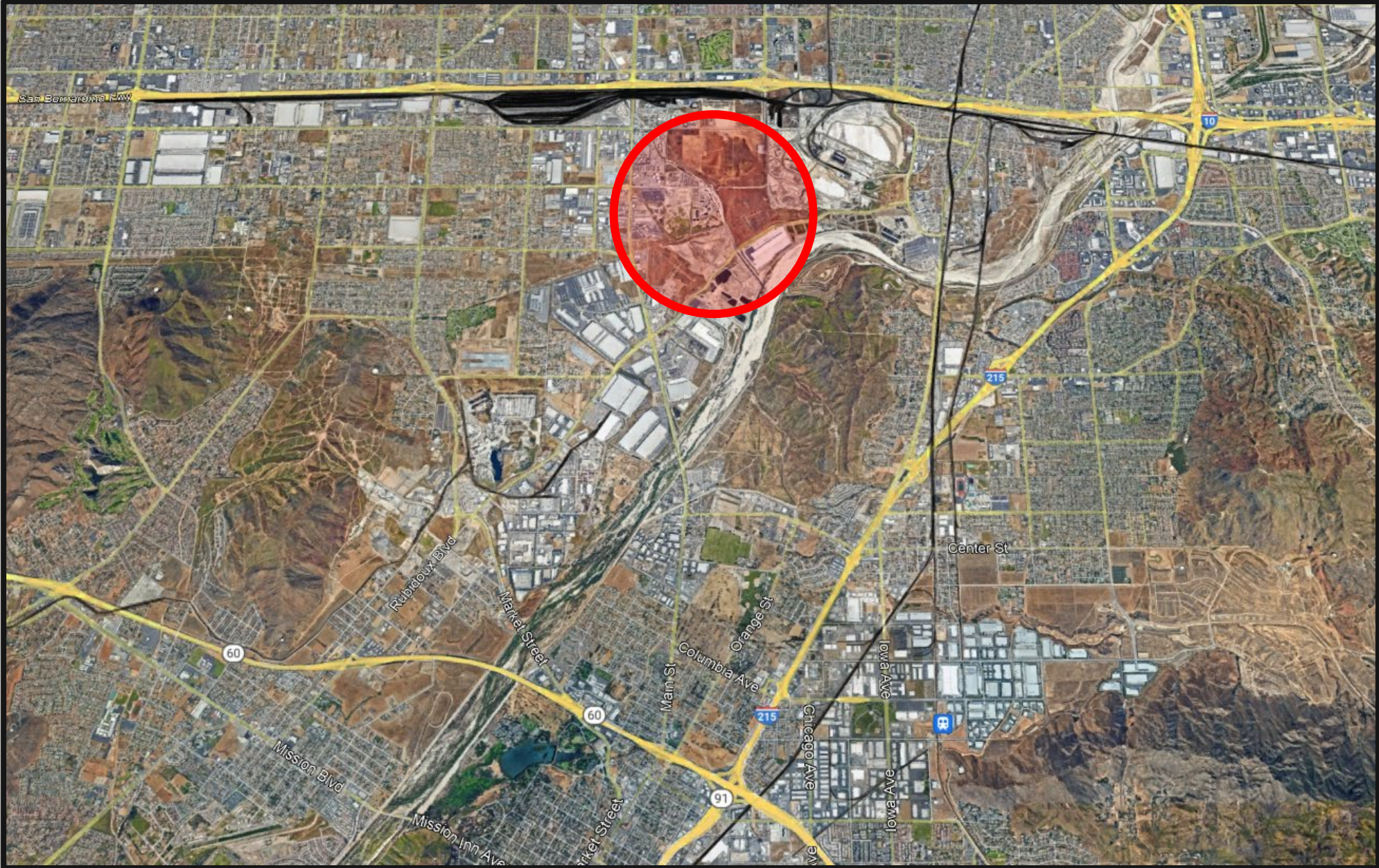




# June Hayes and Deborah Robertson Habitat Nature Center

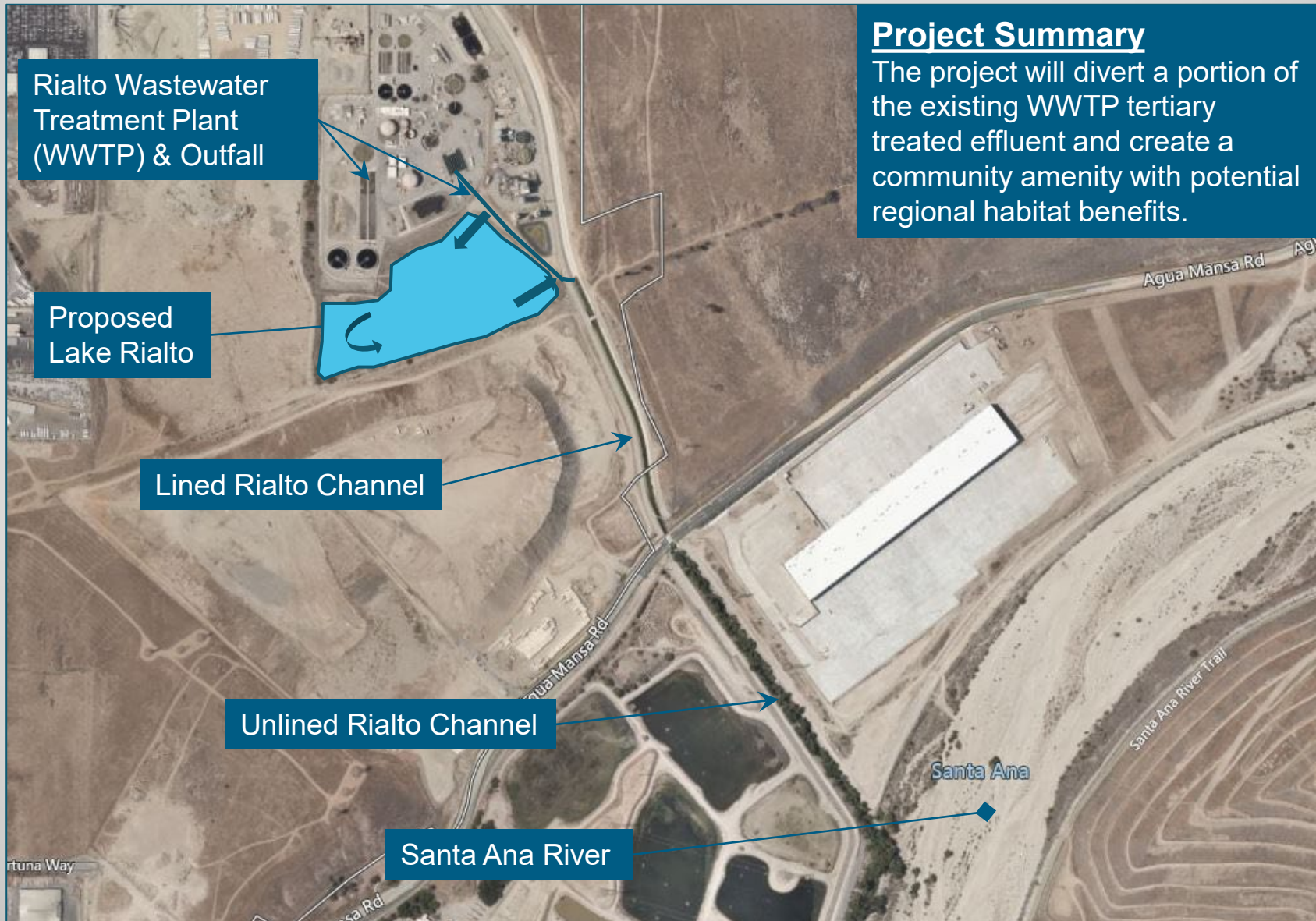
Utility Commission Update – January 21, 2025

# Project Vicinity



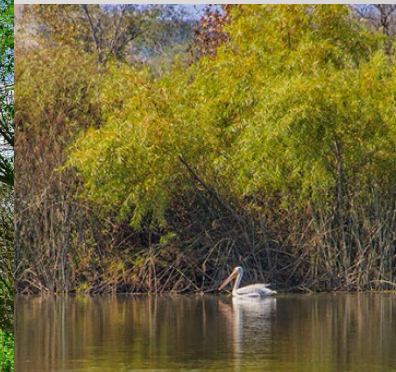
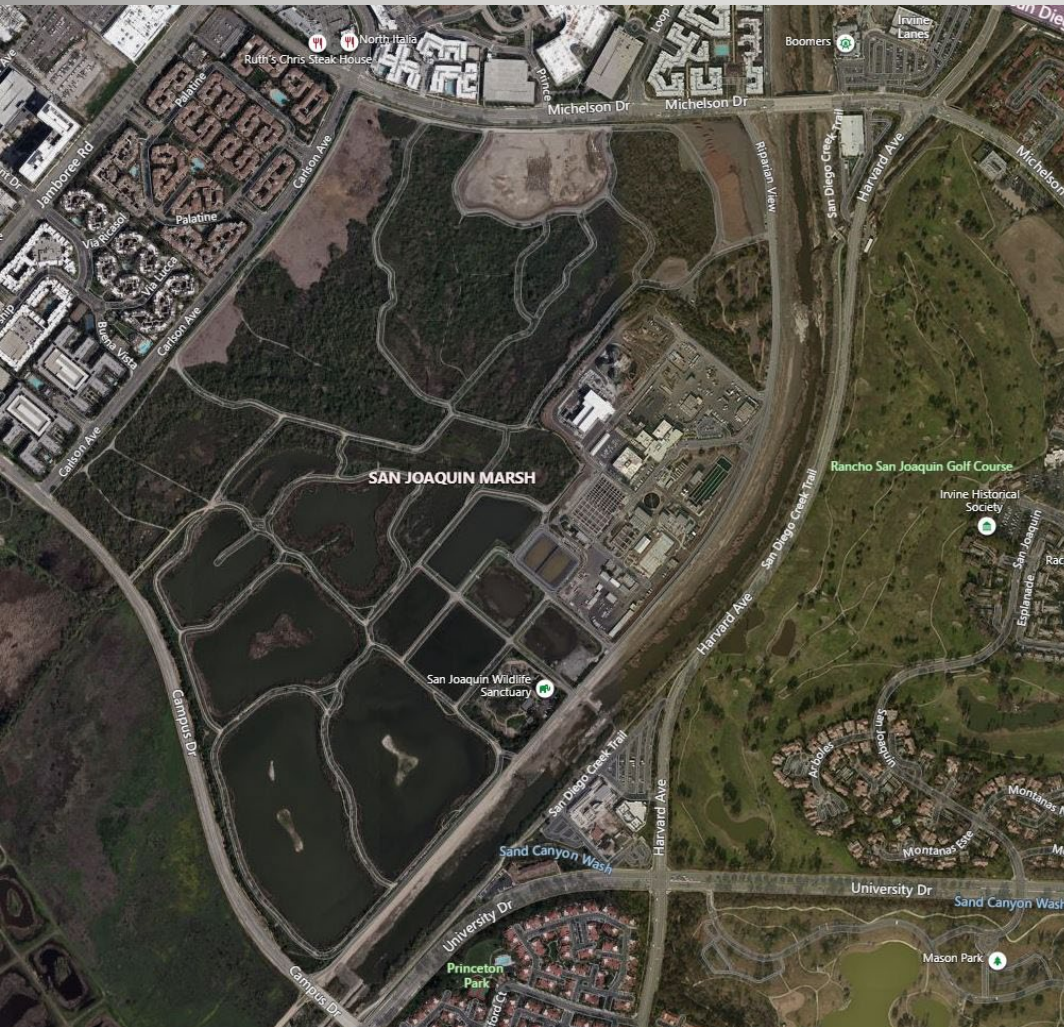
# June Hayes and Deborah Robertson Habitat Nature Center

## Proximity to the Santa Ana River



# Building on Other Successes and Inspiration

## San Joaquin Marsh & Wildlife Sanctuary Tour



**Water Quality Treatment, Wildlife Sanctuary & Community Benefits**  
(Recreational, Educational & Environmental)

# Conceptual Landscaping Design

## Community Benefits

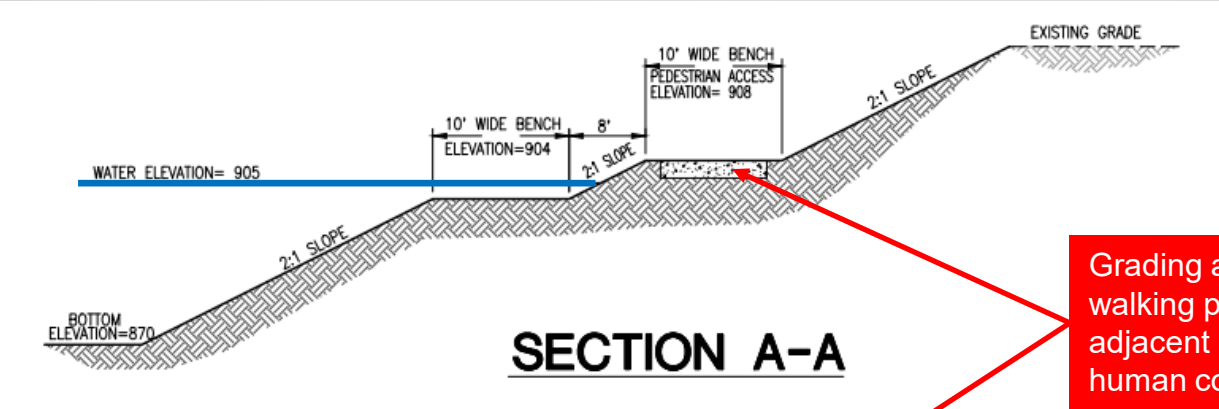
- Water Feature
- Walking Trails
- Education
- Bird Watching (Pacific Flyway)

## Potential Hydraulic & Habitat Benefits

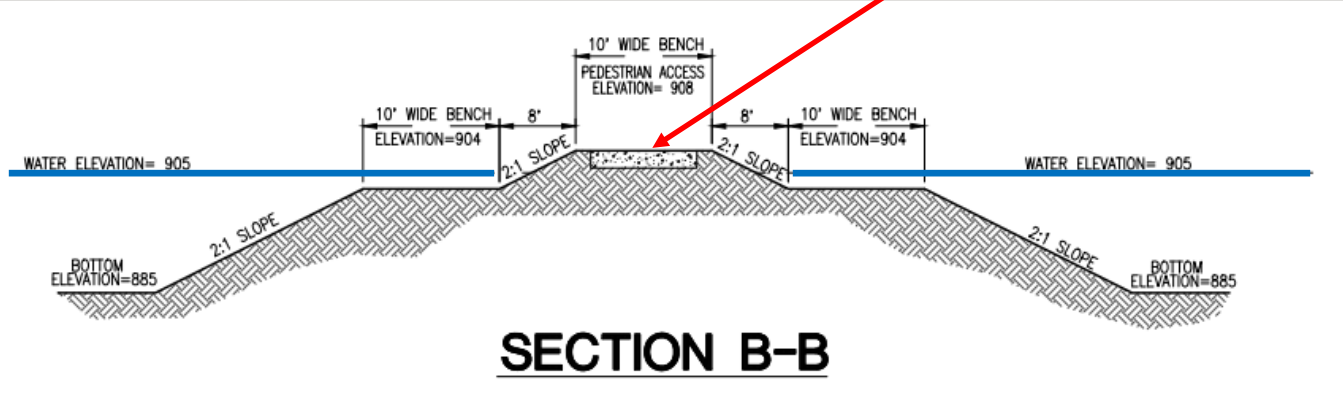
- Creation of Wetlands & Wildlife Habitat
- Retention and Control of flows in the Rialto Channel
- Removal of Invasive Fish Species
- Cooler water can be pumped from the bottom of the lake to reduce temperatures in the Rialto Channel



# Cross Sections



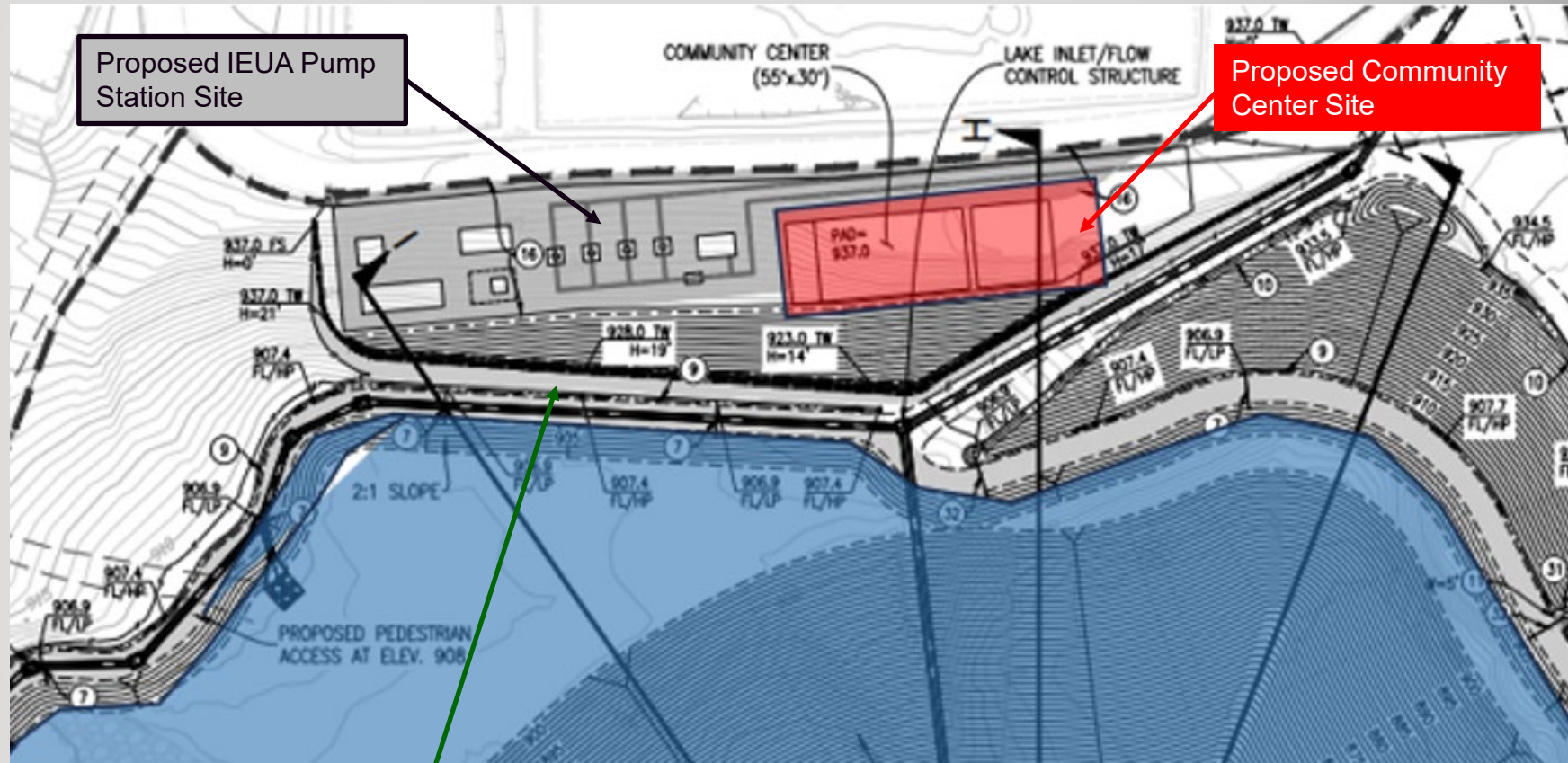
Grading achieves desired walking paths, view lookouts and adjacent marsh areas, without human contact with the lake.



# COMMUNITY CENTER & IEUA PUMP STATION PAD

## Community Center Site

- Pad is shared with IEUA Pump Station (grading and soil retention wall is cost shared)
- Pad is sized to its maximum to conform with site and grading constraints
- Community Center will have views and an overlook to the RHNC
- Outdoor Community Gathering/Meeting Space
- Room for outdoor RHNC Signage and Photo Area
- Space for school demonstration garden/planting area



Proposed Soil Retention Wall

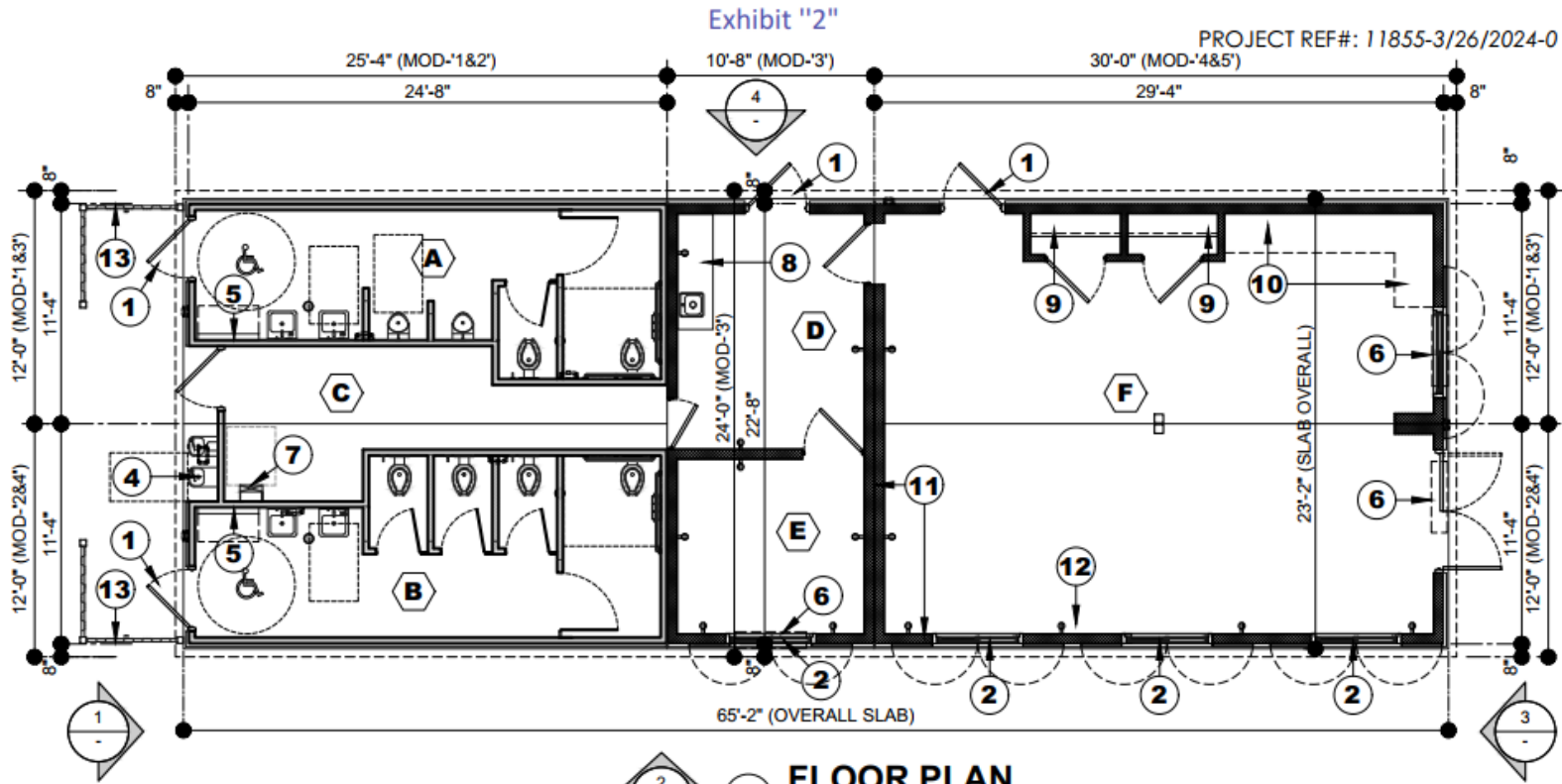
# PROPOSED COMMUNITY BUILDING

- Prefabricated building approx. 1,475 square-feet
- Includes restrooms, staff office, storage space, and large community room.
- Staff proposing to maintain current Building standards, colors, and security precautions.
  - Similar to Frisbie Park and Joe Sampson Park facilities





# COMMUNITY BUILDING FLOOR PLAN



**FLOOR PLAN**  
SCALE: 1/8"=1'-0"

**FLOOR PLAN LEGEND:**

- A** MENS RESTROOM
- B** WOMENS RESTROOM
- C** UTILITY CHASE
- D** STORAGE
- E** OFFICE
- F** COMMUNITY ROOM
- 1** DOOR-EGRESS/INGRESS
- 2** SLIDING WINDOWS W/ SECURITY SHUTTERS
- 3** LIGHTS, TYP.
- 4** DRINKING FOUNTAIN W/ BOTTLE FILLER
- 5** BABY CHANGING
- 6** PTAC
- 7** ELEC PANEL
- 8** SINK W/ COUNTER, CABINETS
- 9** CLOSET
- 10** CABINET SPACE (BY OTHERS)
- 11** 2X WALLS W/ INSULATIONS, TYP.
- 12** ELECTRICAL OUTLETS, TYP.
- 13** METAL SIGHT SCREEN

THIS CONCEPTUAL/ PRELIMINARY DESIGN AND THE 3D RENDERING IS AN ARTISTIC INTERPRETATION OF THE DESIGN. IT IS NOT MEANT TO BE AN EXACT RE rendition OF THE FINISH PRODUCT. SOME ITEMS MAY NOT BE STANDARD AND / OR SUBJECT TO CHANGE DURING PROJECT DEVELOPMENT

## Proposed Building Features:

- Approximately 1,475 square-feet
- Colors and textiles to match Frisbie Park facilities
- Floors will be polished concrete
- Ceiling will be vaulted with exposed HVAC ducting
- Staff would like to maximize natural light and considering skylights/solar tubes



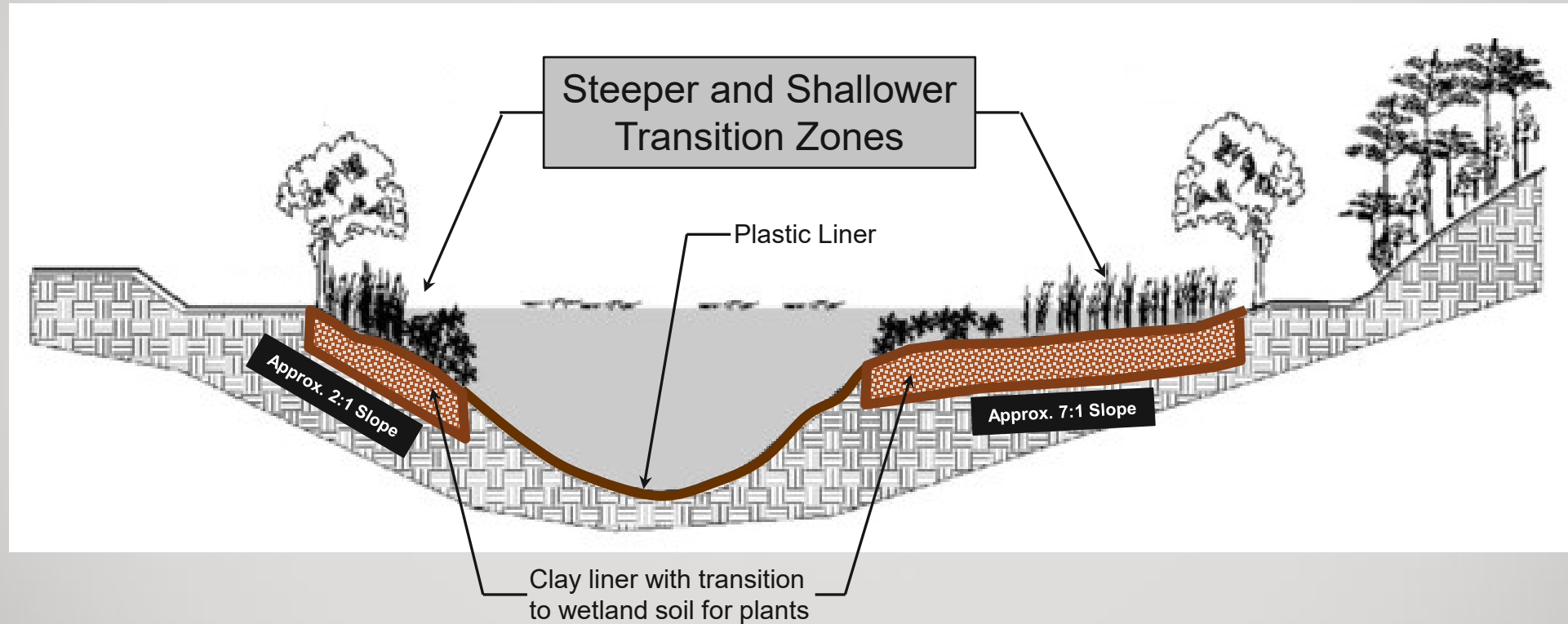
COPYRIGHT 2024, PUBLIC RESTROOM COMPANY THIS MATERIAL IS THE EXCLUSIVE PROPERTY OF PUBLIC RESTROOM COMPANY AND SHALL NOT BE REPRODUCED, USED, OR DISCLOSED TO OTHERS EXCEPT AS AUTHORIZED BY THE WRITTEN PERMISSION OF PUBLIC RESTROOM COMPANY.

BUILDING TYPE:	<b>PREFABRICATED RESTROOM BUILDING AND COMMUNITY CENTER</b>
PROJECT:	<b>HABITAT NATURE CENTER RIALTO, CA</b>

REVISION #	-
REVISION DATE:	-
DRAWN BY:	-
PROJECT #:	<b>11855</b>
START DATE:	<b>3/26/2024</b>
DRAWN BY:	<b>EOR</b>

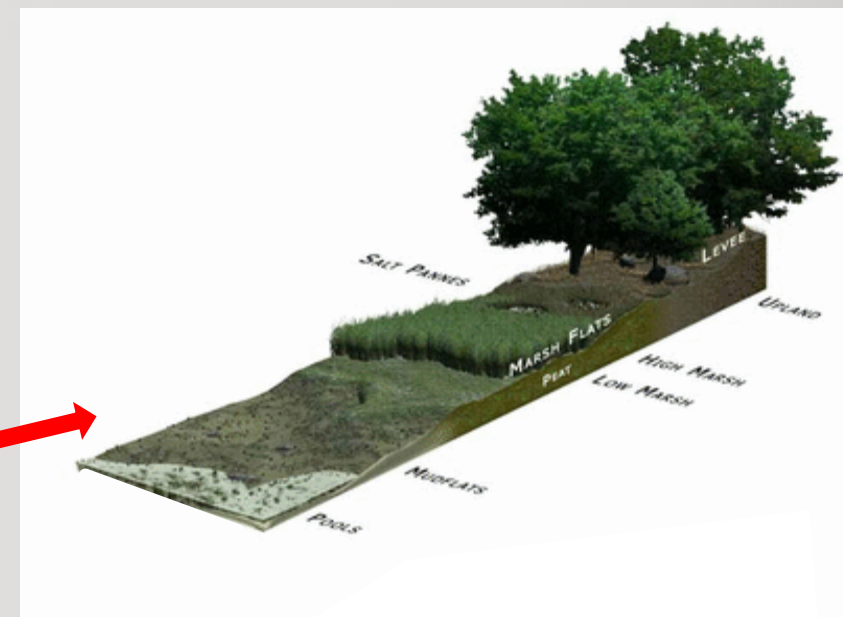
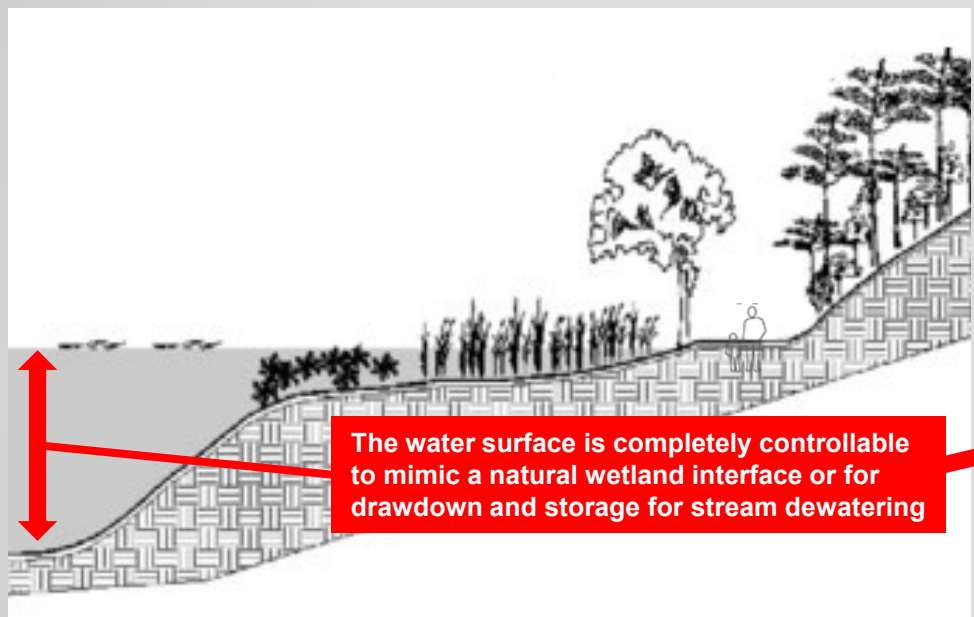
SHEET#	<b>A-1</b>
MAX. PERSON / HOUR:	<b>360 M</b>

# June Hayes and Deborah Robertson Habitat Nature Center Wetland/Upland Interface Cross Section Using Hybrid of Clay/Soil and Plastic Liner



# Hydraulic Controls and Potential Habitat Benefits

## Rialto Channel Invasive Fish Species Removal



Basin	Volume (AF)	Volume (MG)	Retention Time at Current Flows @ 7 mgd	Retention Time at Rated Capacity Flows @ 11.7 mgd
East (large)	113.65	37.0	5.3 days	3.2 days
West (small)	7.63	2.5	0.4 days	0.2 days
<b>Total</b>	<b>121.28</b>	<b>39.5</b>	<b>5.7 days</b>	<b>3.4 days</b>

# Potential Environmental Benefits for the Santa Ana River Habitat Conservation Plan

## Rialto Channel Invasive Fish Species Removal

### STREAM DEWATERING



#### Improved Dewatering

Increases from 2 hours  
to

At 7 MGD = 5.7 D

At 11.7 MGD = 3.4 D



**Questions/Feedback?**