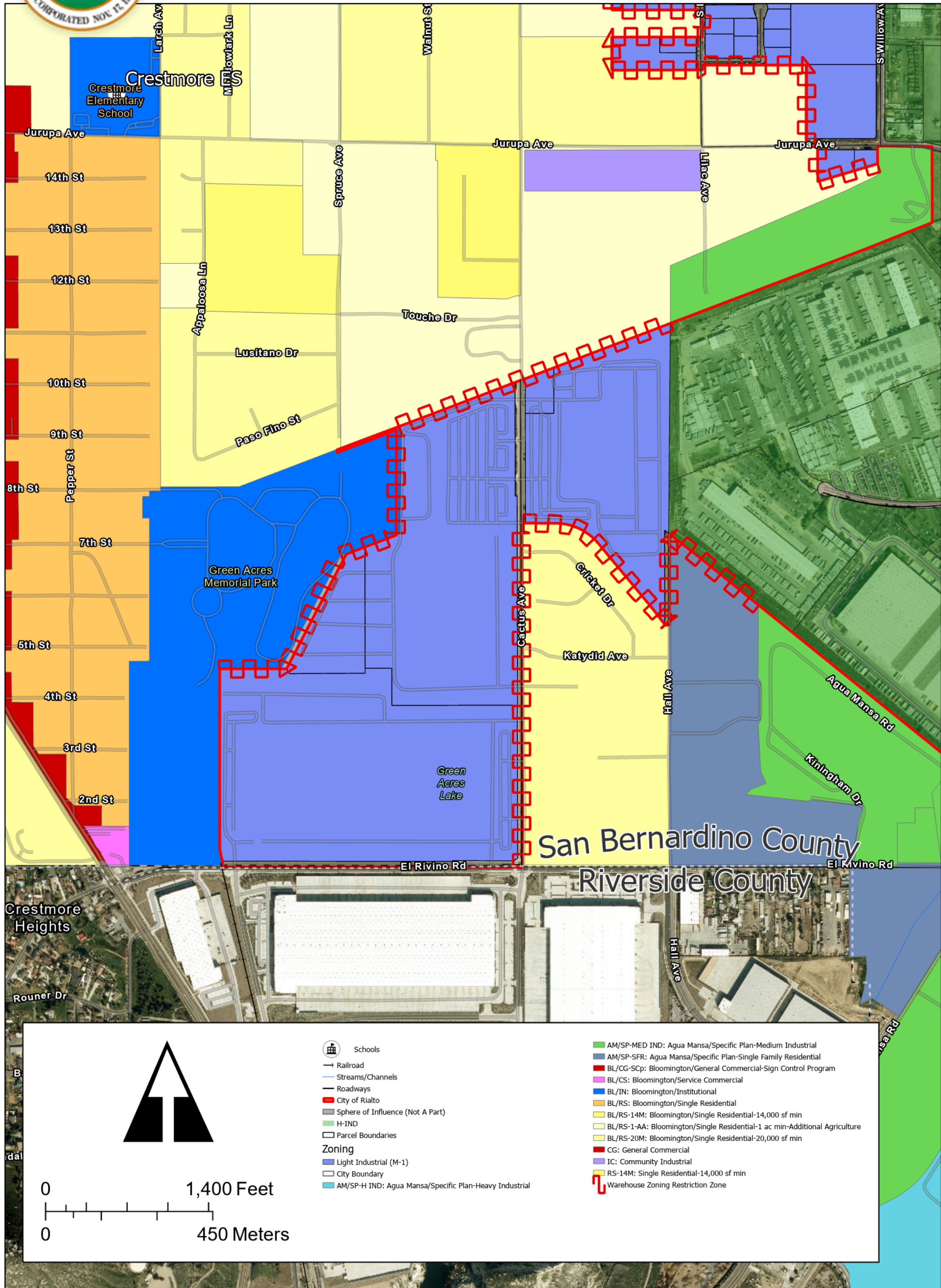
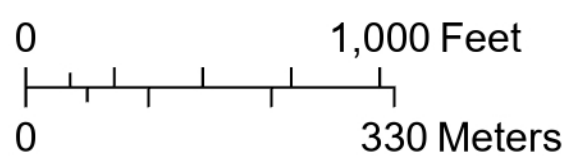
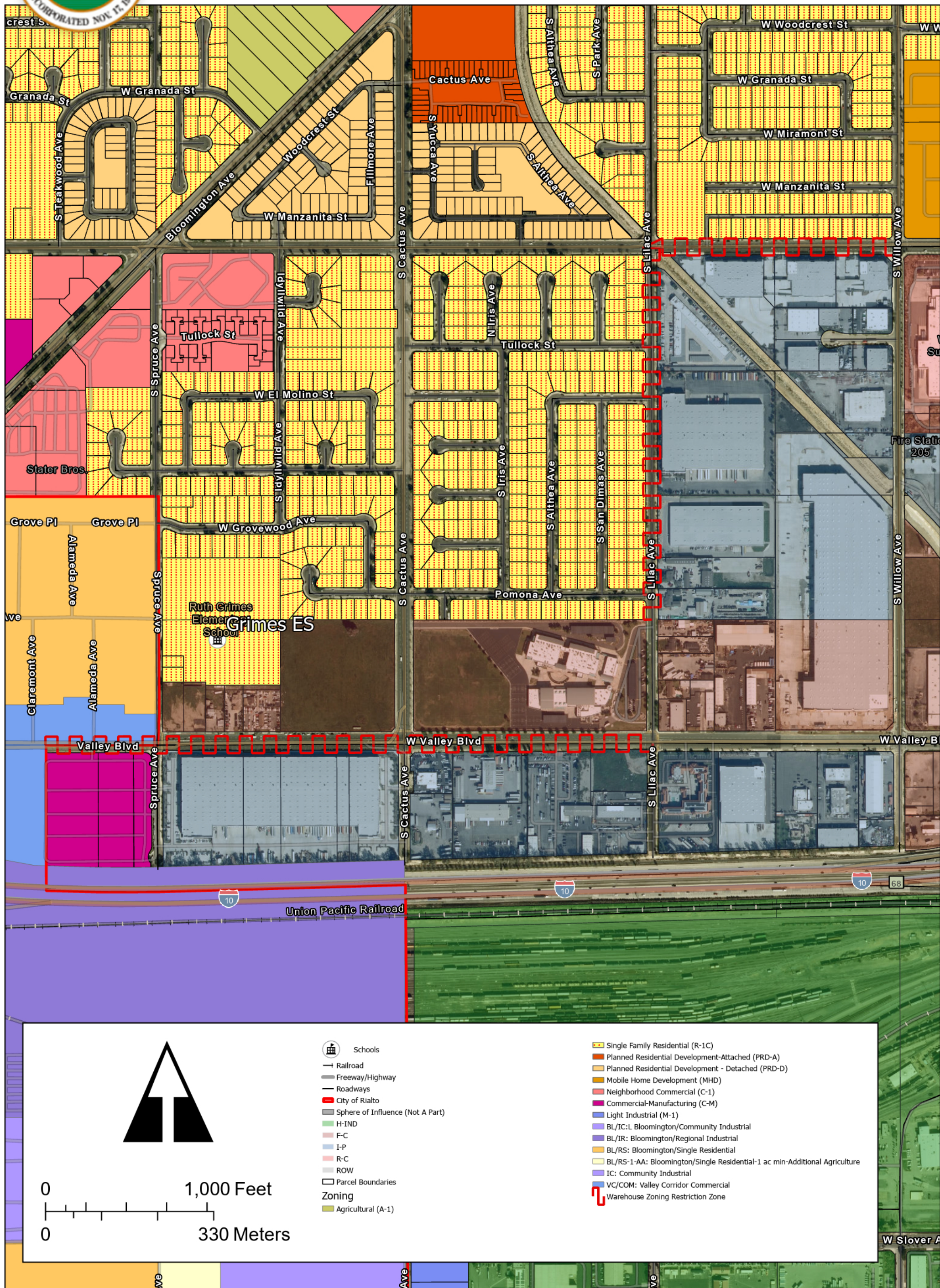


* Storage warehouses are conditionally permitted within the M-1, M-IND, and H-IND zones on this exhibit

** Storage warehouse buildings larger than 50,000 square feet may not be built adjacent to or across the street from residential zones

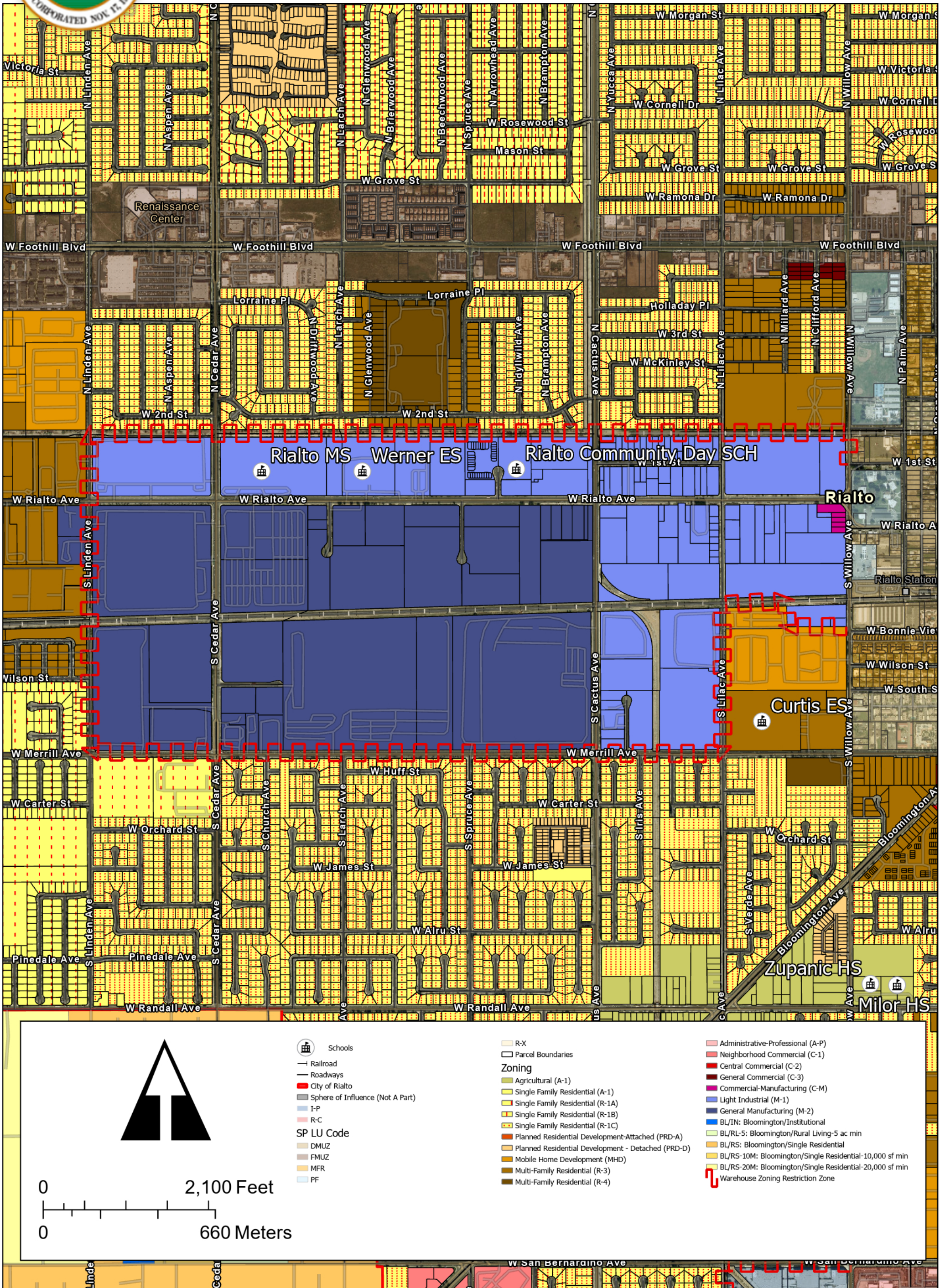


* Storage warehouses are conditionally permitted within the M-1, M-IND, and H-IND zones on this exhibit
 ** Storage warehouse buildings larger than 50,000 square feet may not be built adjacent to or across the street from residential zones

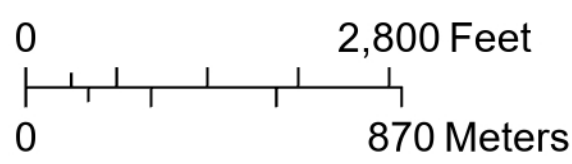
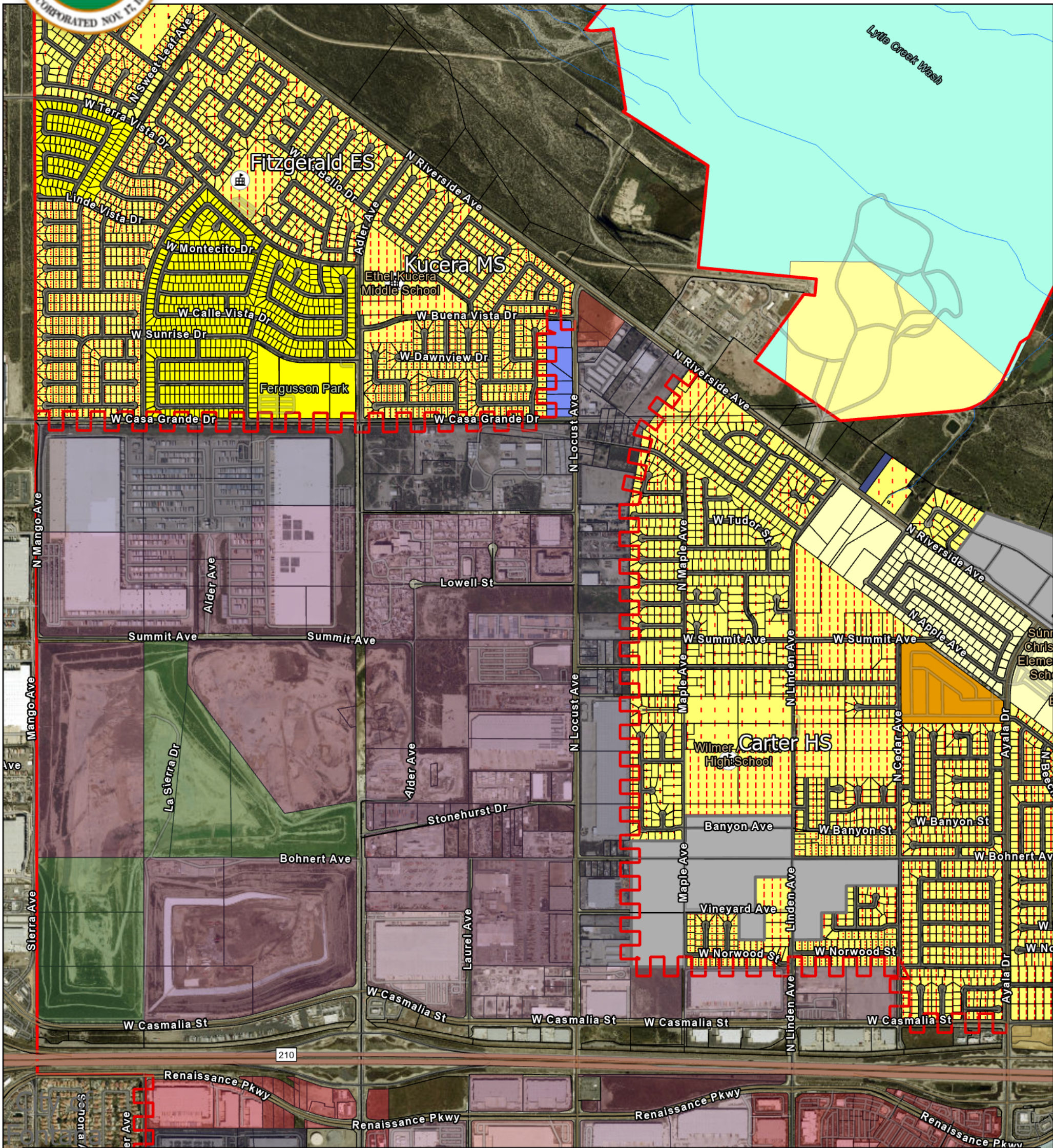


- Schools
- Railroad
- Freeway/Highway
- Roadways
- City of Rialto
- Sphere of Influence (Not A Part)
- H-IND
- F-C
- I-P
- R-C
- ROW
- Parcel Boundaries
- Zoning**
- Agricultural (A-1)
- Single Family Residential (R-1C)
- Planned Residential Development-Attached (PRD-A)
- Planned Residential Development - Detached (PRD-D)
- Mobile Home Development (MHD)
- Neighborhood Commercial (C-1)
- Commercial-Manufacturing (C-M)
- Light Industrial (M-1)
- BL/IC:L Bloomington/Community Industrial
- BL/IR: Bloomington/Regional Industrial
- BL/RS: Bloomington/Single Residential
- BL/RS-1-AA: Bloomington/Single Residential-1 ac min-Additional Agriculture
- IC: Community Industrial
- VC/COM: Valley Corridor Commercial
- Warehouse Zoning Restriction Zone

* Storage warehouses are conditionally permitted within the M-1, M-IND, and H-IND zones on this exhibit
 ** Storage warehouse buildings larger than 50,000 square feet may not be built adjacent to or across the street from residential zones



* Storage warehouses are conditionally permitted within the M-1, M-IND, and H-IND zones on this exhibit
 ** Storage warehouse buildings larger than 50,000 square feet may not be built adjacent to or across the street from residential zones

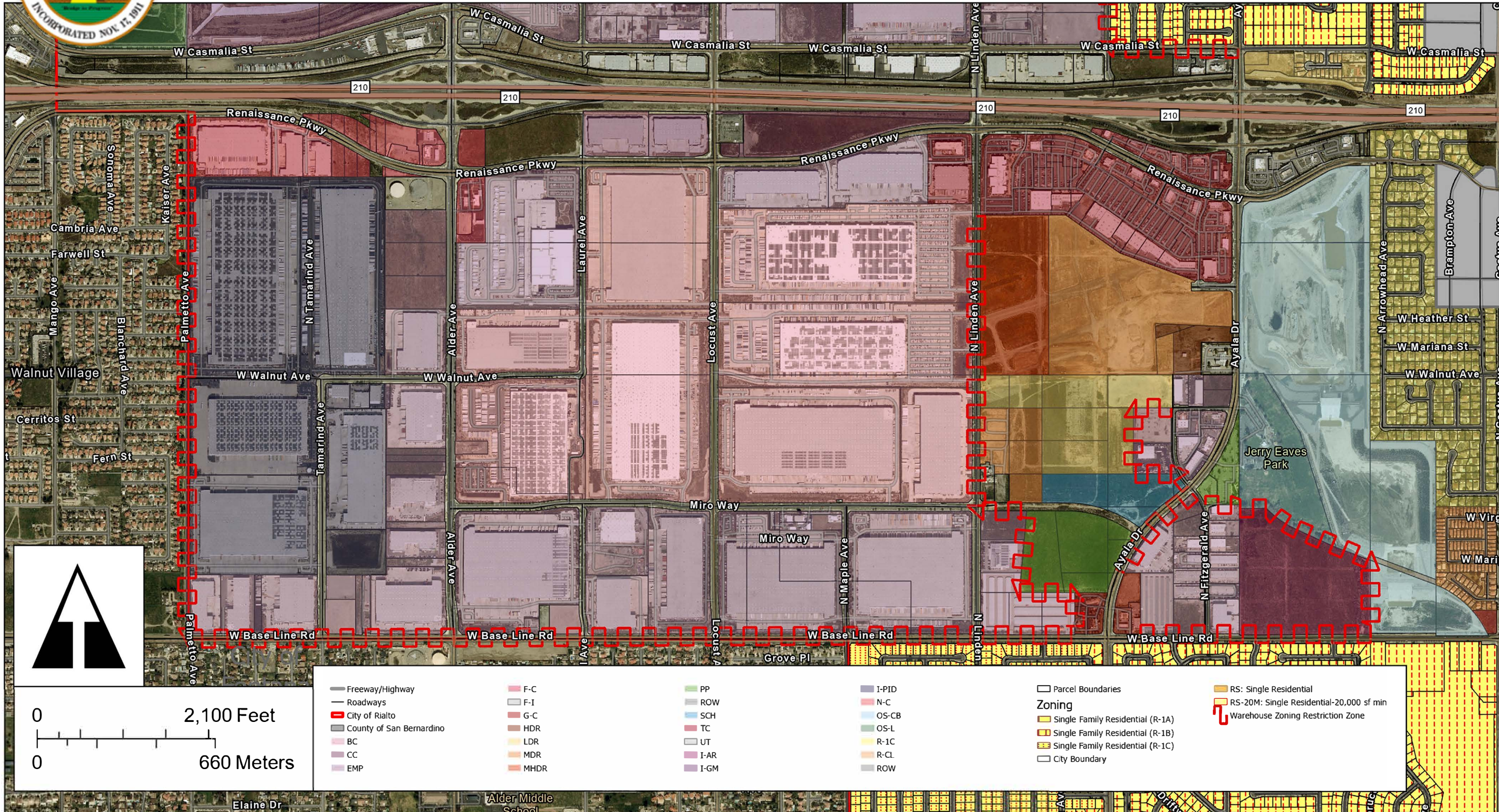


- Schools
- Streams/Channels
- Freeway/Highway
- Roadways
- City of Rialto
- County of San Bernardino
- Sphere of Influence (Not A Part)
- BC
- CC
- EMP
- F-C
- F-I
- HDR
- LDR

- MDR
- MHDR
- PP
- SCH
- TC
- UT
- I-AR
- I-GM
- I-PID
- N-C
- OS-CB
- OS-L
- ROW
- Parcel Boundaries

- Zoning**
- Single Family Residential (R-1A-10000)
 - Single Family Residential (R-1A)
 - Single Family Residential (R-1B)
 - Single Family Residential (R-1C)
 - Single Family Residential (R-6000)
 - Mobile Home Development (MHD)
 - Light Industrial (M-1)
 - General Manufacturing (M-2)
 - City Boundary
 - FW: Floodway
 - RS-1: Single Residential-1 ac min
 - RS-10M: Single Residential-10,000 sf min
 - RS-20M: Single Residential-20,000 sf min
 - Warehouse Zoning Restriction Zone

* Storage warehouses are conditionally permitted within the M-1, M-IND, and H-IND zones on this exhibit
 ** Storage warehouse buildings larger than 50,000 square feet may not be built adjacent to or across the street from residential zones



* Storage warehouses are conditionally permitted within the M-1, M-IND, and H-IND zones on this exhibit
 ** Storage warehouse buildings larger than 50,000 square feet may not be built adjacent to or across the street from residential zones