

INTERVIEW

Parks and Recreation Master Plan

Prepared for:

CITY OF RIALTO

PARKS, RECREATION, AND COMMUNITY SERVICES

April 24, 2026

Michael Baker
INTERNATIONAL



10
CA Offices
(No. of Employees)

- Carlsbad (44)
- Long Beach (41)
- Los Angeles (20)
- Ontario (48)
- Palm Desert (25)
- Rancho Cordova (15)
- San Diego (117)
- Santa Ana (227)
- Temecula (43)
- Walnut Creek (7)



By the Numbers...

Founded May 1
1940

Form of the Organization
Pennsylvania C Corporation

4150+ EMPLOYEES
NATIONWIDE

 **254** LOCAL
STAFF

587 PROFESSIONALS
IN CALIFORNIA

*Michael Baker International, a leading provider of engineering and consulting services, including design, planning, architectural, environmental, construction and program management, has been **solving some of the world's most complex infrastructure challenges for more than 80 years** with a legacy of expertise, experience, innovation and integrity.*

2025 ENR RANKINGS

THE TOP
500
DESIGN FIRMS

- 27** Top 500 Design Firms
- 18** Top 100 Pure Designers
- 7** Bridges
- 7** Dams & Reservoirs
- 9** Construction Management
- 13** Transportation
- 15** Water Supply
- 17** Airports
- 17** Highways
- 22** Mass Transit & Rail

Our Team



Richard Beck

CEP, P.W.S., CPESC®, CERP

**Principal-in-
Charge**



Valerie Clarke

AICP, PLA

**Project
Manager**



Jeremy Franzini

PLA

**Quality Assurance/
Quality Control
Landscape Architect**



David Suls

AICP

**Planning
Advisor**



Kimilee Murillo

E.I.T

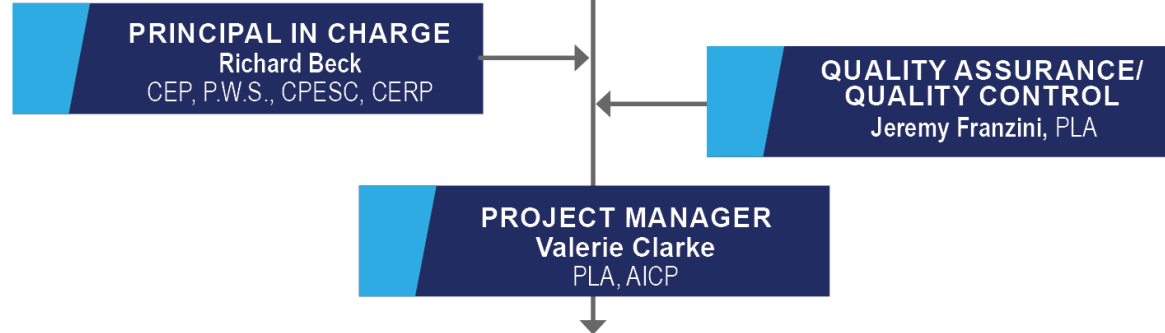
**Engagement
Support**



The Michael Baker Team

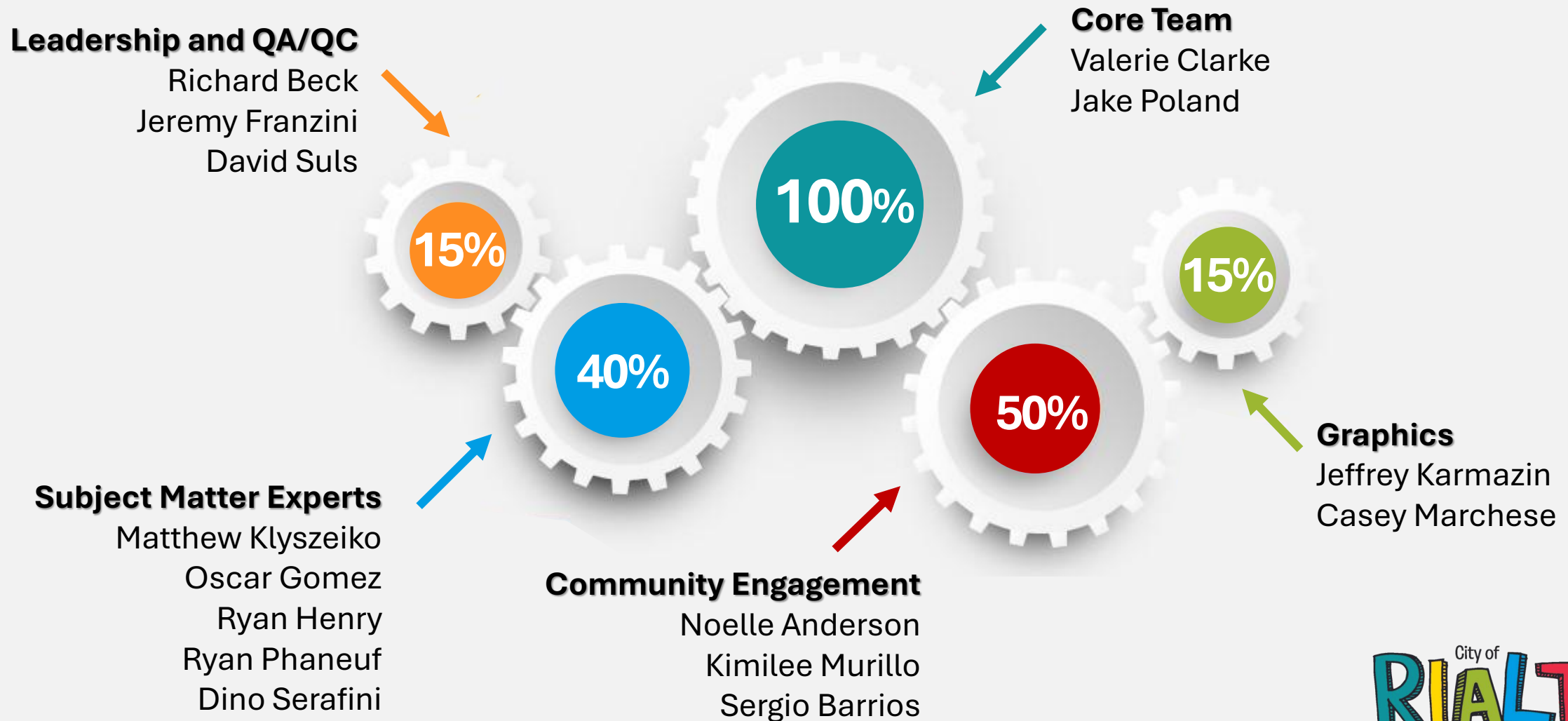
- ✓ A project team of **15** dedicated staff
- ✓ Primarily within Southern California
- ✓ Availability to provide additional resources as demand increases

● **No major changes to the organization since the Proposal**



PARKS AND RECREATION MASTER PLAN		
PLANNING	CONCEPTUAL DESIGN AND VISIONING	COMMUNITY ENGAGEMENT
Valerie Clarke, PLA, AICP- <i>Lead Planner</i> David Suls, AICP- <i>Planning Advisor</i> Jake Poland- <i>Planner</i>	Jeremy Franzini, PLA- <i>Lead Landscape Architect</i> Oscar Gomez, PLA- <i>Landscape Architect</i> Matthew Klyszeiko, AICP- <i>Vision Advisor</i>	Noelle Anderson, AICP- <i>Engagement Lead</i> Kimilee Murillo, E.I.T- <i>Engagement Support</i> ● Sergio Barrios- <i>Engagement Support</i>
ENVIRONMENTAL	IMPLEMENTATION AND POLICY	GIS AND GRAPHIC DESIGN
Ryan Henry- <i>Environmental Lead</i> Ryan Phaneuf, sUAS, CERPIT, CAE- <i>Sustainability Lead</i>	Dino Serafini- <i>Implementation and Finance</i> Casey Marchese- <i>Planner</i>	Jeffrey Karmazin - <i>GIS Specialist</i> Valerie Clarke, PLA, AICP- <i>Graphic Design</i> Jake Poland- <i>Graphic Support</i>

Staffing Availability Following the NTP

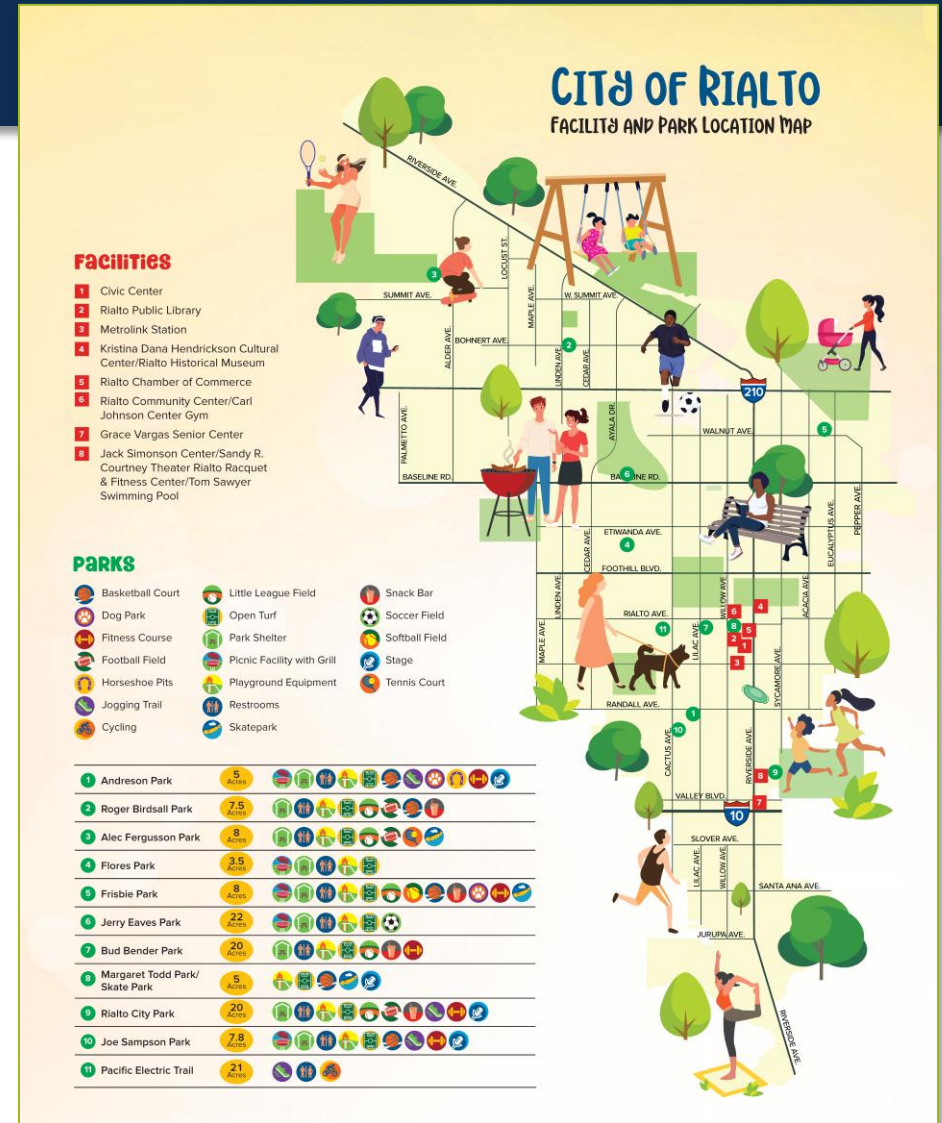


Roadmap to a Successful Master Plan

- STEP 1** Existing Conditions
- STEP 2** Field Visits
- STEP 3** Needs Assessment & Community Engagement
- STEP 4** Implementation Plan
- STEP 5** Conceptual Recommendations
- STEP 6** Final Plan

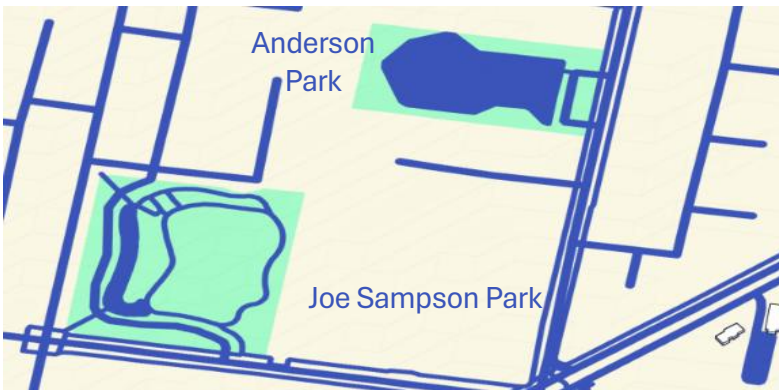


Provide inclusive, high-quality recreation and community programs; promote active living, personal health, and social connection; help build stronger families and healthier communities.

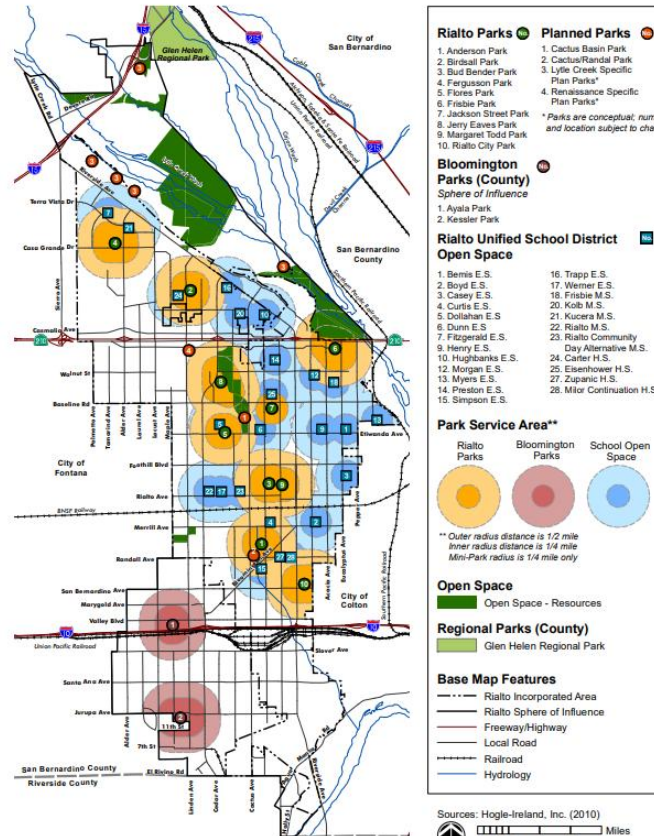


1 Existing Conditions

GIS Data and Existing Base Plans



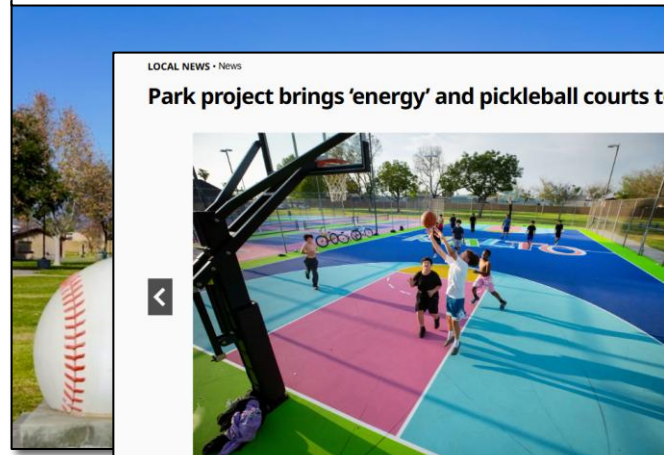
Desktop Studies and Peer City Comparisons



Recent Changes and City Input

Rialto Approves \$800K+ for Inclusive Playground Serving Children With Disabilities, Targeting 2026 Completion

2 min read
8 months ago | Manny Sandoval (https://ecm.com/author/mannysandoval/)



Park project brings 'energy' and pickleball courts to Rialto

1 of 6
A group plays basketball on a recently resurfaced court on Monday, April 14, 2025, at Rialto City Park. (Photo by Stan Lim, Contributing Photographer)

By STAFF REPORT | PUBLISHED: April 16, 2025 at 3:26 PM PDT | UPDATED: April 17, 2025 at 1:15 AM PDT

2 Field Visits



EXAMPLE REPORT CARD Individual Park

B

Amenities

- Variety of park amenities
- Amenities are in good condition
- Facilities meet community needs
- Amenities are appropriately distributed

Based on overall amenity condition and completeness



2 Field Visits



- ✓ Focus on key facilities:
 - ✓ Carl Johnson Center
 - ✓ Rialto Park Cemetery
 - ✓ Rialto Fitness Center
 - ✓ Grace Vargas Senior Center
- ✓ Planning level condition
- ✓ Functionality
- ✓ Accessibility
- ✓ Relationship to surrounding park spaces



Park Inventory Example

Amenities:	Name: CARBON CANYON REGIONAL PARK
<ul style="list-style-type: none"> ✓ Age 2-5 Playground ✓ Age 5-12 Playground ✓ Age 2-12 Playground ✓ Tot Swing ✓ Strap Swing 	Type: Regional Park
Facilities:	Location: 4442 Carbon Canyon Rd, Brea 92823
<ul style="list-style-type: none"> ✓ Restroom ✓ Drinking Fountains ✓ Bar-B-Ques ✓ Picnic Tables ✓ Picnic Shelter 	Size: 124.0 Acres
Sports Fields/Courts:	Parking: 100+ spaces
<ul style="list-style-type: none"> ✓ Tennis Court (8 Lighted) ✓ Volleyball Court (3 sand) ✓ Baseball/Softball Field (2) ✓ Open Space 	Special Features:
	<ul style="list-style-type: none"> ✓ Bike Path ✓ Horse Trail Access ✓ Multi-Use Trail ✓ Lake ✓ Fitness Course ✓ Horseshoe Pit ✓ Walking Path
	Notes:
	Park Office, Group Picnic Areas, Nature Center, Fishing, Native Garden, Amphitheater, Horseshoe Pits, Coastal Redwood Grove

Name: CARBON CANYON REGIONAL PARK	
Type: Regional Park	
Location: 4442 Carbon Canyon Rd, Brea 92823	
Size: 124.0 Acres	
Parking: 100+ spaces	

Identify Gaps



Park Classification	Recommended Standard Acres Per 1,000 Residents	Current Yorba Linda Parkland Acres	Acres Required to Meet Standard	Surplus or (Deficit)
Local Parkland Subject to Quimby Act				
Neighborhood Parks	2.0 Acres Per 1,000 Residents	94.5	130	(35.5)
Community Parks	2.0 Acres Per 1,000 Residents	64.3	130	(65.7)
Totals	4 acres per 1,000	158.8 acres	260 acres	(101.2)
Other Parkland Standards Not Subject to Quimby				
Mini Parks/Linear Parks/Greenbelts	1 Acre Per 1,000 Residents	27.28	65	(37.72)
School Fields (Joint-Use Agreement with PYLUSD)	No Recommended Standard – Can be counted as city parkland if under joint-use agreement	61.6	NA	61.6
Regional Parks	10.0 Acres Per 1,000 Residents	593.69	650	(56.31)
Facilities & Special Use Areas	No Recommended Standard. Counted in Total Parkland Acres Per 1,000 Residents	230.30	NA	230.30
Recommended Total Combined Park Acres to Meet Standard	15 Acres X 65,000 Residents Divided by 1,000 = 975 Acres	Current Yorba Linda Total = 1,071.17	975	96.17

- ❑ Community Outreach Strategy
- ❑ Branding
- ❑ Workshops (Community, City, & City Council)
- ❑ Community Survey (In person distribution and mailed)
- ❑ Focus Group Outreach (Senior & Youth)
- ❑ Community Feedback Analysis
- ❑ Spanish Translation



Michael Baker is flexible with our approach and can adapt to meet the needs of the City, community, and stakeholders.

Robust Engagement

JULY 2026							NATIONAL PARKS AND RECREATION MONTH						
SUNDAY	MONDAY	TUESDAY	WEDNESDAY	THURSDAY	FRIDAY	SATURDAY	SUNDAY	MONDAY	TUESDAY	WEDNESDAY	THURSDAY	FRIDAY	SATURDAY
			1 Planning Commission 6:00pm	2 Red, White, and Blue Senior Spirit Day	3	4 Independence Day Celebration 5:30pm – 9:30pm Independence Day City Offices Closed Observed Holiday	5	6	7 Parks, Recreation and Community Services Commission 6:30pm	8 Neighborhood Beautification and Historical Preservation Commission 6:00pm	9 Friends Ice Cream Senior Social 2:00pm – 3:00pm	10 Household Hazardous Waste Drop-off 8:00am – 12:00pm 909.820.2602 Movies in the Park 6:30pm	11 Household Hazardous Waste Drop-off 8:00am – 12:00pm 909.820.2602 Community Clean-Up Day 8:00am – 2:00pm
12	13	14 City Council Meeting 6:30pm 909.820.2519	15 Certified Farmers' Market 14th Birthday 10:00am – 2:00pm Planning Commission 6:00pm	16	17 Movies in the Park 6:30pm	18 Drowning Prevention & Safety Fair 9:00am – 2:00pm Park Clean-Up Day 8:00am – 12:00pm Fergusson Park	19 Senior Park Takeover	20 Utilities Commission 6:00pm	21	22	23 Senior Auction 2:00pm – 3:00pm	24 Household Hazardous Waste Drop-off 8:00am – 12:00pm 909.820.2602 Movies in the Park 6:30pm	25 Household Hazardous Waste Drop-off 8:00am – 12:00pm 909.820.2602
26	27 City Council Meeting 6:30pm 909.820.2519	28	29	30	31 Movies in the Park 6:30pm								



4 Implementation Plan

- ❑ Phasing Recommendations
- ❑ Responsible Parties
- ❑ Planning Level Cost
- ❑ Funding Mechanisms and Policies
- ❑ Metrics to Track Progress

Michael Baker will identify monitoring, performance indicators, and trackable metrics for actions.

EXAMPLE IMPLEMENTATION SUMMARY

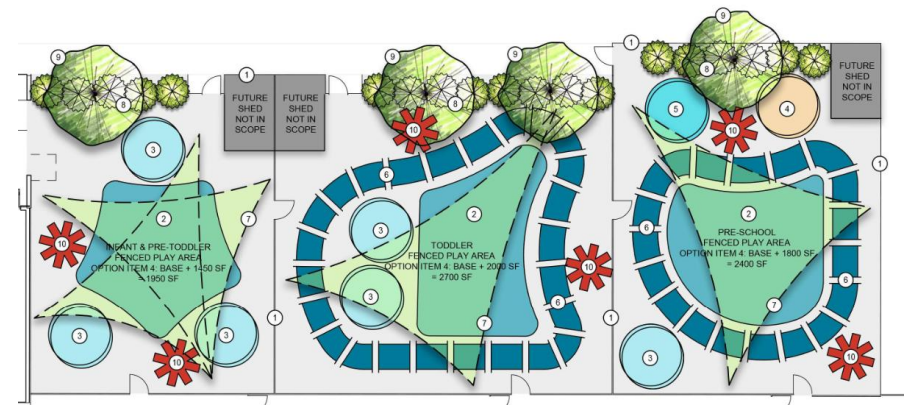
RIALTO Parks and Recreation Master Plan Implementation at a Glance				
Areas of Focus	Immediate	Short Term	Long Term	Progress
1. Responsible Parties	<ul style="list-style-type: none">• Lorem ipsum dolor sit amet, consectetur eiu sed do eiusmod tempor incididunt ut labore et dolore magna	<ul style="list-style-type: none">• Lorem ipsum dolor sit amet, consectetur eiu sed do eiusmod tempor incididunt ut labore et dolore magna	<ul style="list-style-type: none">• Lorem ipsum dolor sit amet, consectetur eiu sed do eiusmod tempor incididunt ut labore et dolore magna	<input type="checkbox"/>
2. Planning Level Cost Estimates	<ul style="list-style-type: none">• Lorem ipsum dolor sit amet, consectetur eiu sed do eiusmod tempor incididunt ut labore et dolore magna	<ul style="list-style-type: none">• Lorem ipsum dolor sit amet, consectetur eiu sed do eiusmod tempor incididunt ut labore et dolore magna	<ul style="list-style-type: none">• Lorem ipsum dolor sit amet, consectetur eiu sed do eiusmod tempor incididunt ut labore et dolore magna	<input checked="" type="checkbox"/>
3. Funding Mechanisms and Policies	<ul style="list-style-type: none">• Lorem ipsum dolor sit amet, consectetur eiu sed do eiusmod tempor incididunt ut labore et dolore magna	<ul style="list-style-type: none">• Lorem ipsum dolor sit amet, consectetur eiu sed do eiusmod tempor incididunt ut labore et dolore magna	<ul style="list-style-type: none">• Lorem ipsum dolor sit amet, consectetur eiu sed do eiusmod tempor incididunt ut labore et dolore magna	<input type="checkbox"/>

5 Conceptual Recommendations



Opportunities at a Planning Level

- ✓ Activity zones and open space
- ✓ Relationships between buildings, outdoor spaces, & circulation
- ✓ Pedestrian access and connectivity
- ✓ Usability and safety





Two City Council Meetings



Two Recreation and Parks
Commission Meetings

Project Schedule

JUNE 2026 JULY 2026 AUG 2026 SEPT 2026 OCT 2026 NOV 2026 DEC 2026 JAN 2027 FEB 2027 MAR 2026 APR 2027 **MAY 2027**

TASK 1
Project Administration



TASK 2
Data Collection & Existing Conditions Analysis



TASK 3
Community Engagement



TASK 4
Needs Assessment and Strategic Recommendations



TASK 5
Implementation and Funding Strategy



TASK 6
Plan Alignment, Documentation, and Adoption



= Internal Team Meetings

= External Stakeholder/
Public Engagement

= Key Deliverables

= Recreation and Parks
Commission & City Council
Meetings

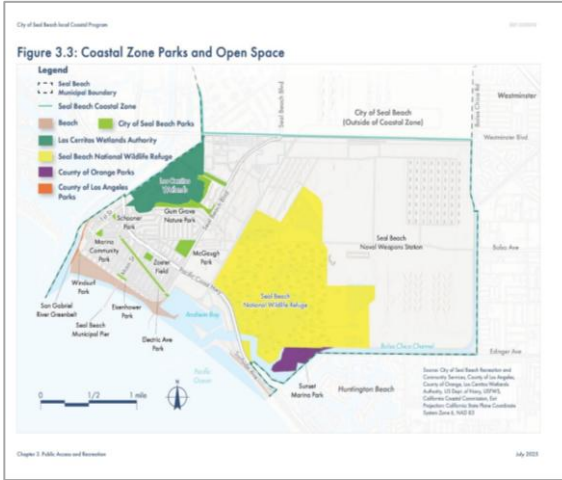
**Proven Success with the
Michael Baker Team**



JOIN US FOR A PUBLIC PRESENTATION ABOUT OPEN SPACE IN SEAL BEACH

OPEN SPACE, RECREATION, AND CONSERVATION ELEMENT

The City of Seal Beach is updating its current Open Space, Recreation, and Conservation Element of the General Plan. The General Plan is a long-term blueprint that guides the city's physical development. The Open Space, Recreation, and Conservation Element identifies current and future open space needs and establishes methods to meet those needs.



Seal Beach, CA Open Space, Recreation, and Conservation Element

PRESENTATION INFORMATION



Recreation and Park Commission Public Meeting
Date: October 22, 2025
Time: 6:00 PM
Location: City Hall, 211 8th St., Seal Beach, CA 90740

The Element update process is just beginning! Learn more about what's ahead and share your input. If you're unable to attend, a public survey will be available soon so you can still contribute your feedback.

PURPOSE OF THE UPDATE



Senate Bill 1425
This senate bill requires cities in California to update their Open Space Element to:

- 1) Ensure equitable access for all residents
- 2) Incorporate climate resilience strategies
- 3) Identify opportunities for rowdizing and connecting wildlife corridors



NATURAL AND OPEN SPACES



PARKS AND RECREATION SPACES

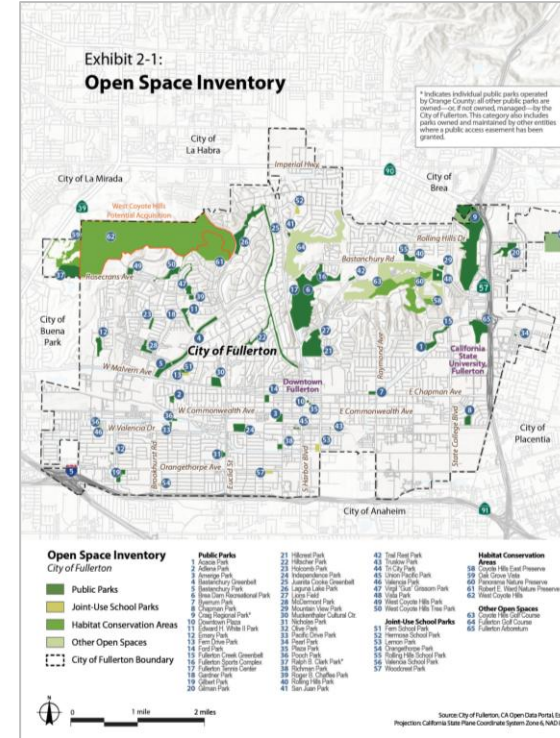


BEACHES AND TRAILS

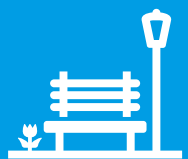
For more information about the City's General Plan, visit: <https://www.sealbeachca.gov/Departments/Community-Development/Planning-Development/General-Plan>



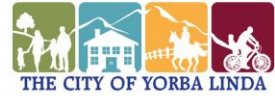
Fullerton, CA Open Space and Conservation Element



City of Fullerton's Update to the General Plan
Environmental Justice and Open Space Elements
WE NEED YOUR INPUT!
Scan the QR Code to Take the Public Online Survey!
What is an Open Space Element?
What is Environmental Justice?
How are these Elements related?



City-wide Open Space, Conservation and Recreation Elements



Parks and Recreation Master Plan



DRAFT February 2014

Amenities:

- ✓ Age 2-5 Playground
- ✓ Age 5-12 Playground
- ✓ Tot Swing (2)
- ✓ Strap Swing (2)

Name: VETERANS PARK

Type: Community Park

Location: 4756 Valley View, 92886

Size: 9.5 Acres

Parking: 53 spaces

Facilities:

- ✓ Restroom
- ✓ Drinking Fountain
- ✓ Picnic Table
- ✓ Snack Stand/Kitchen

Special Features:

- ✓ Bike Racks
- ✓ Includes Veterans Memorial

Sports Fields/Courts:

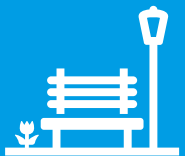
- ✓ Baseball Field (4 lighted)
- ✓ Football Field (lighted)
- ✓ Soccer - Small (2 lighted)

Notes:



City of Yorba Linda
Parks and Recreation Master Plan
A-76

Yorba Linda, CA



Parks and Recreation Master Plan

California Prop 4 Funding

\$10 BILLION CLIMATE BOND
\$3.4 BILLION ALLOCATED FY26



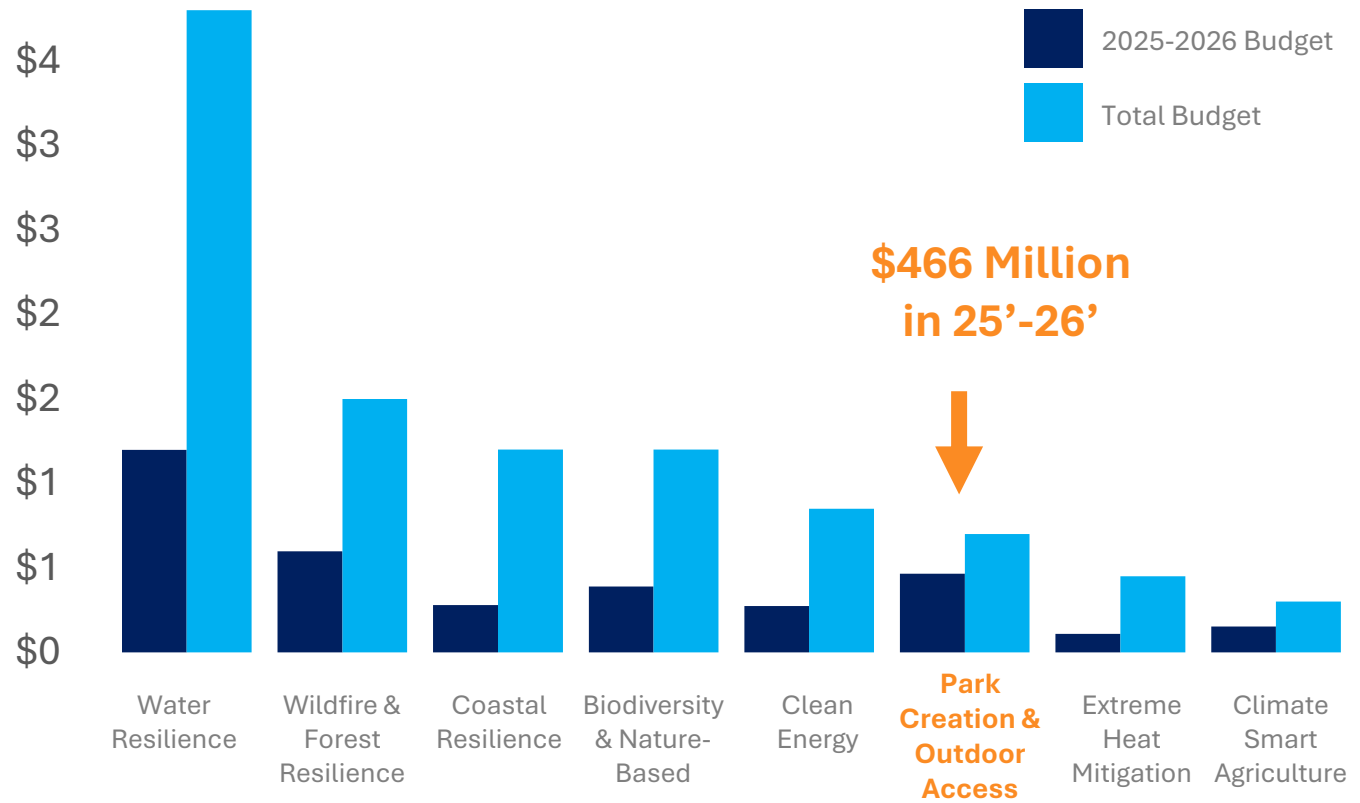
A Guide to Proposition 4:


The Safe Drinking Water,
Wildfire Prevention, Drought
Preparedness, and Clean
Air Bond Act of 2024



Published: August 2024

Funding (\$ billion)





Why Select Michael Baker?

1

Familiarity of Rialto

Providing Efficiency to the City

2

Full-Service Local Team

Supported by National Expertise

3

Ready to Hit the Ground Running

Flexible and Transparent Scheduling

Appendix

Michael Baker

I N T E R N A T I O N A L

We Make a Difference



Project Management Approach

CONTROL SCOPE, SCHEDULE, AND BUDGET

Total Involvement

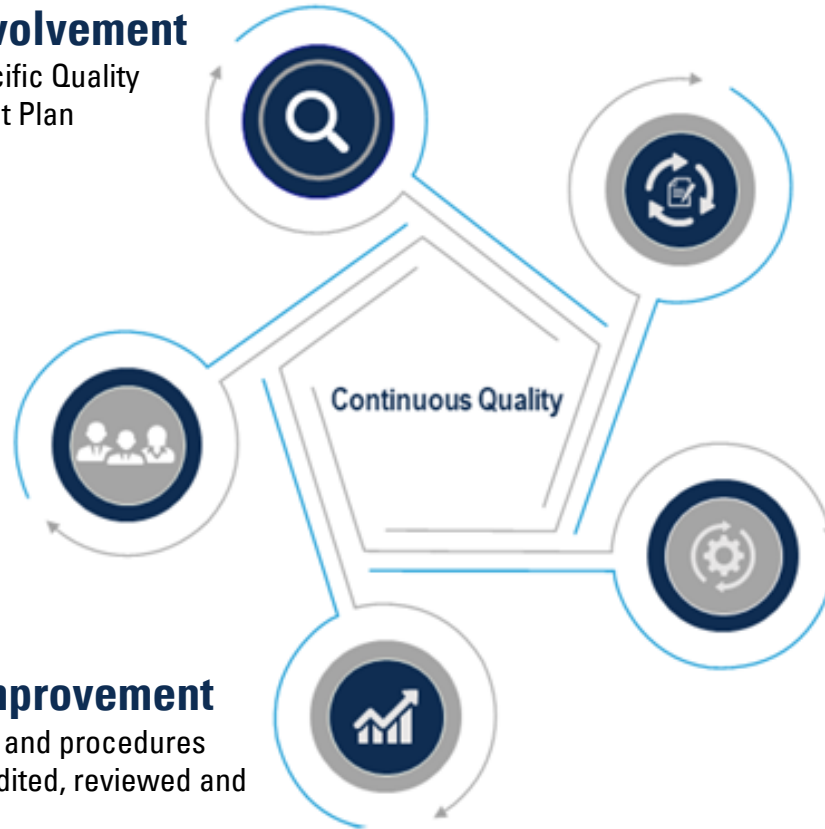
Project Specific Quality Management Plan

Customer Focus

Continual communication to maintain continuity and control over scope, schedule and budget.

Process Improvement

Project controls and procedures continuously audited, reviewed and improved.



Planning Process

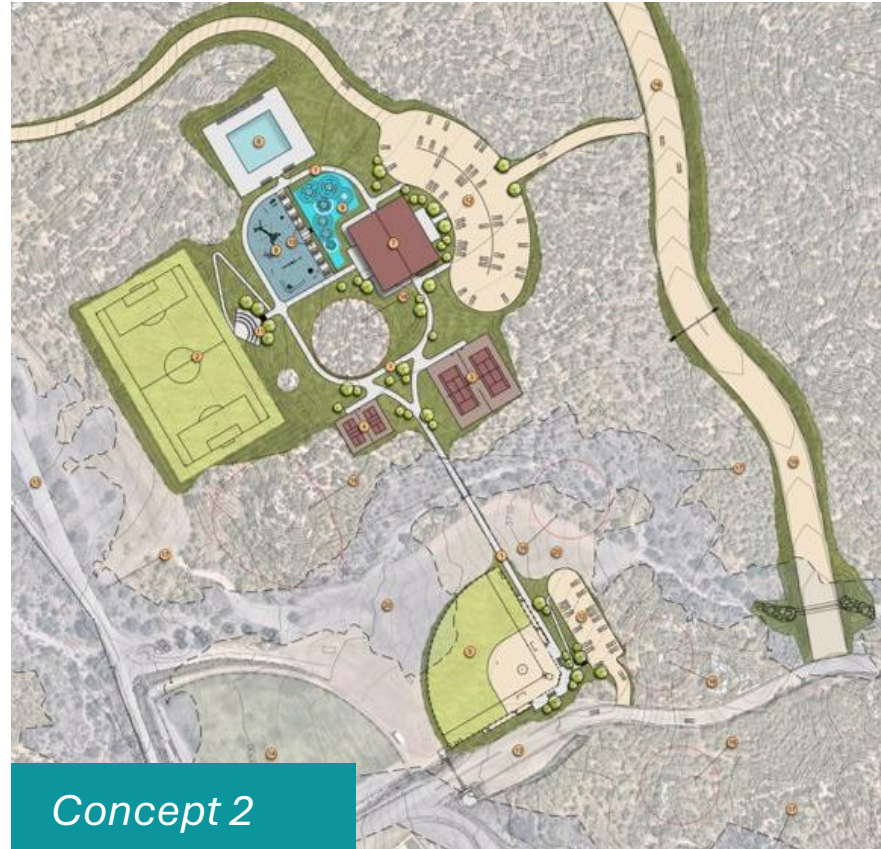
American Planning Association (APA) standards and reference documents followed including Planning Advisory Service (PAS) Reports .

Process Management

Quality Assurance procedures including peer technical reviews, presentation reviews, and cross-discipline reviews.

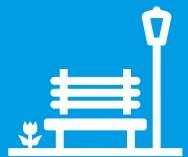


Detailed Design Work



Design Alternatives

- Multi-Purpose Community Building
- Outdoor Pool and Splash Pad
- Baseball/Softball Field
- Soccer Field and Tribal Event Area
- Tennis and Pickleball Courts
- Playground Area
- Picnic Areas with Ramadas



Cahuilla Band of Indians Sports Complex Design
Anza, California

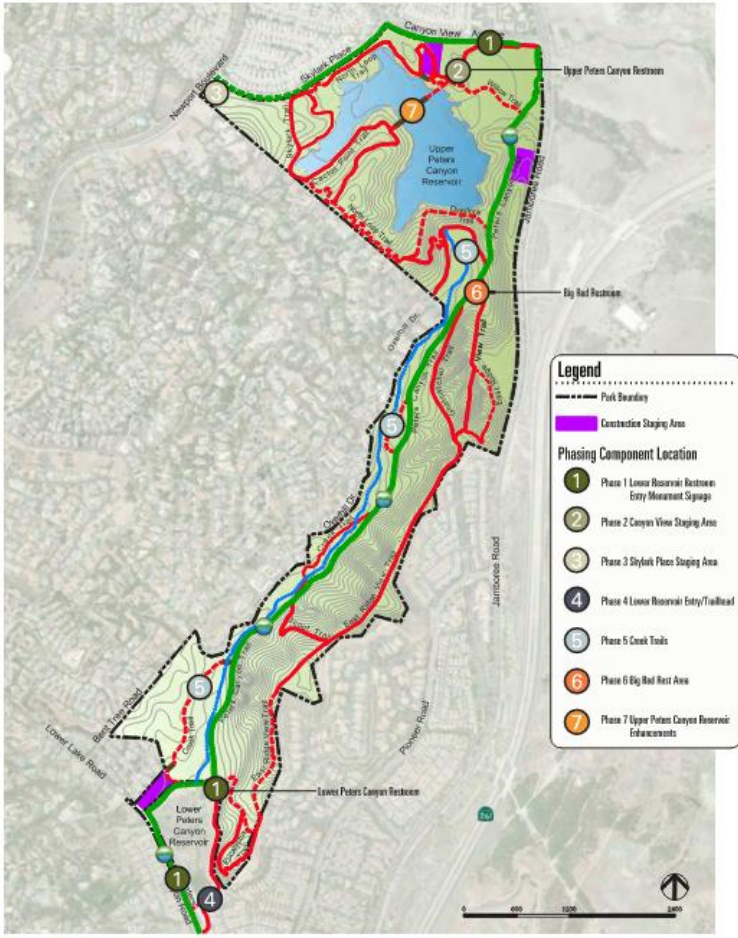
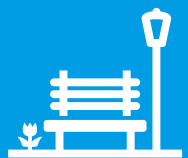


Exhibit 7.2 - Phasing Plan



Exhibit 5.11 - Skylink Place Staging Area Concept Plan



OC Parks Peters Canyon Regional Park General Development Plan and Resource Conservation Plan

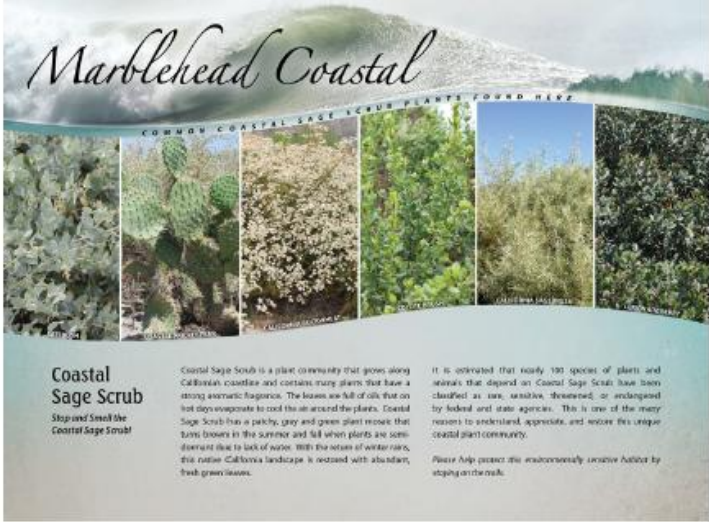
Orange, CA

Built Project Work in Southern California



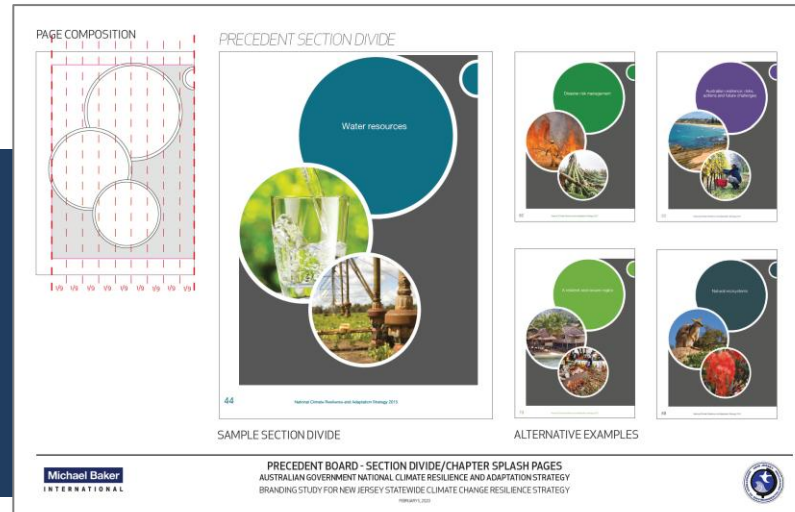
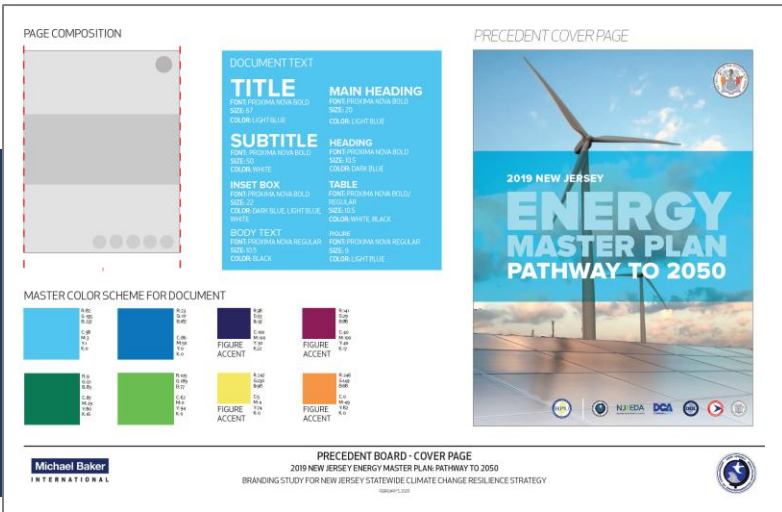
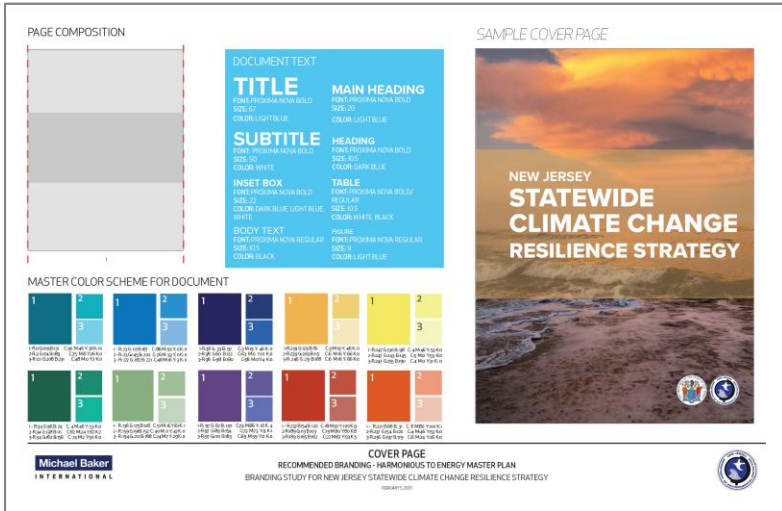
Trails, Greenways, & Open Space

Sea Summit, San Clemente, CA



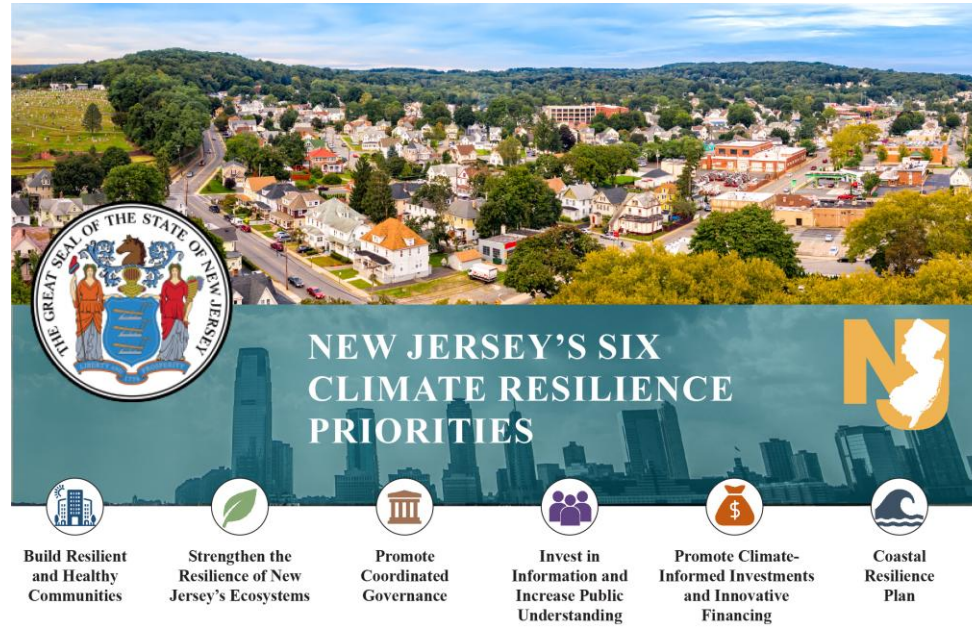
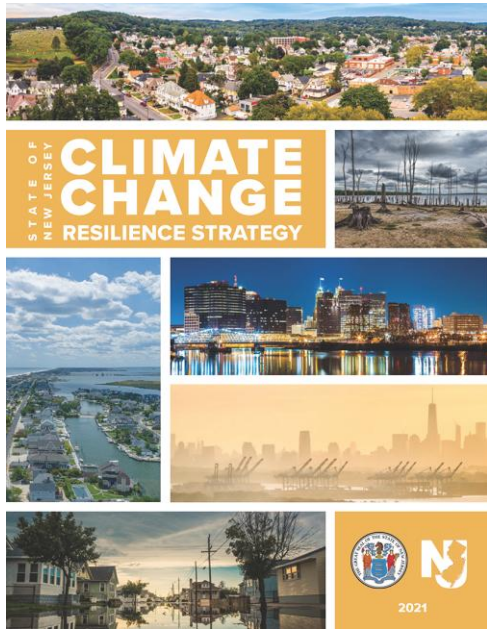
Graphic Plans and Storyboarding

- Graphically illustrated planning documents with custom branding for outreach
 - Storyboarding approach
 - Flexible for incremental review or cloud-based platform for real-time comment
 - Hard copy and digital version available



Our team can create visual style guides based on client preferences and precedence studies of prior reports.

Graphic Plans and Storyboarding



For a copy of the Strategy Visit: <https://www.nj.gov/dep/climatechange/resilience-strategy.html>

For a copy of the Scientific Report Visit: www.nj.gov/dep/climatechange/

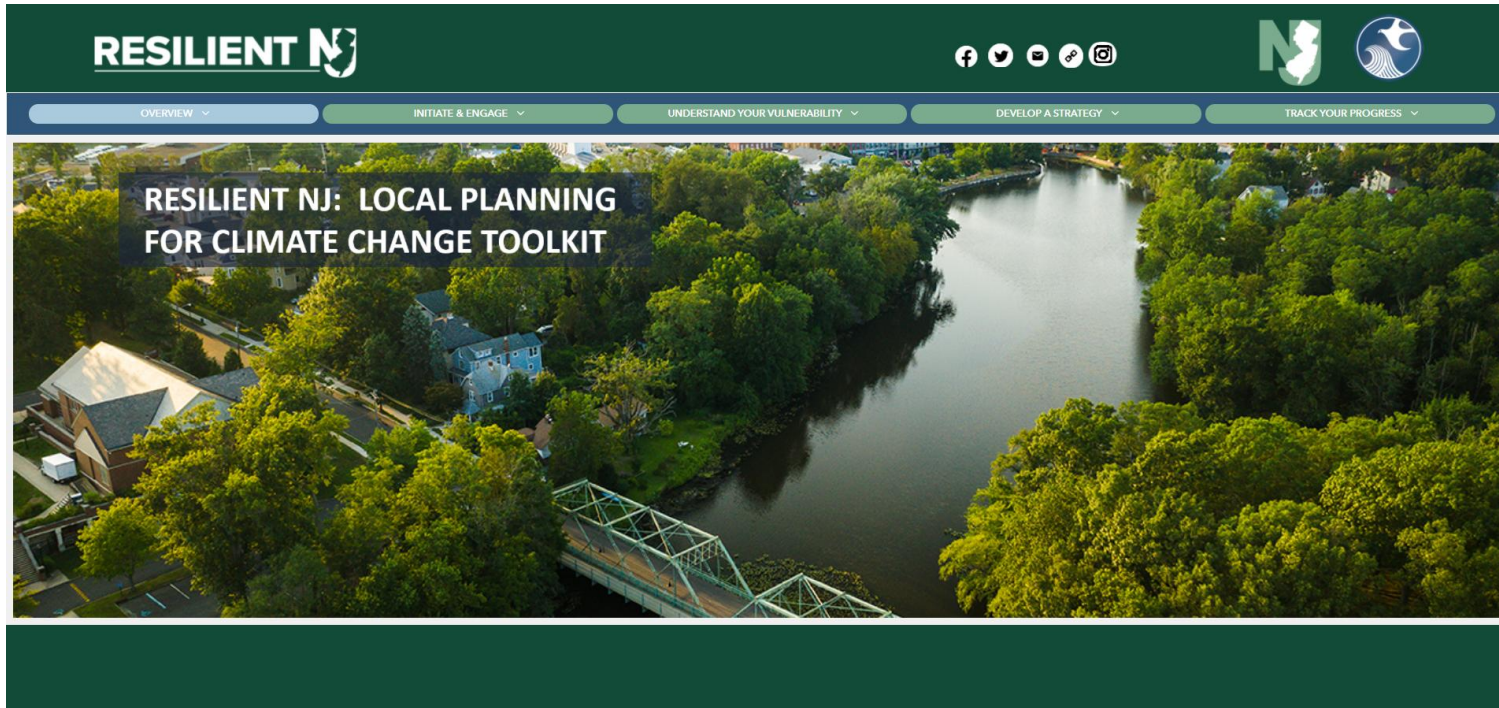


NOTABLE DOCUMENT AWARD WINNER
FOR ENVIRONMENTAL PROTECTION


NATIONAL CONFERENCE OF STATE LEGISLATURES



Website Creation and Branding



For a copy of the Local Planning for Climate Change Toolkit Visit: <https://www.nj.gov/dep/climatechange/resilience-strategy.html>

 **U.S. Climate Resilience Toolkit** *RESILIENT NJ IS NOW INCLUDED AS A TOOL WITHIN THE U.S. CLIMATE RESILIENCE TOOLKIT*

