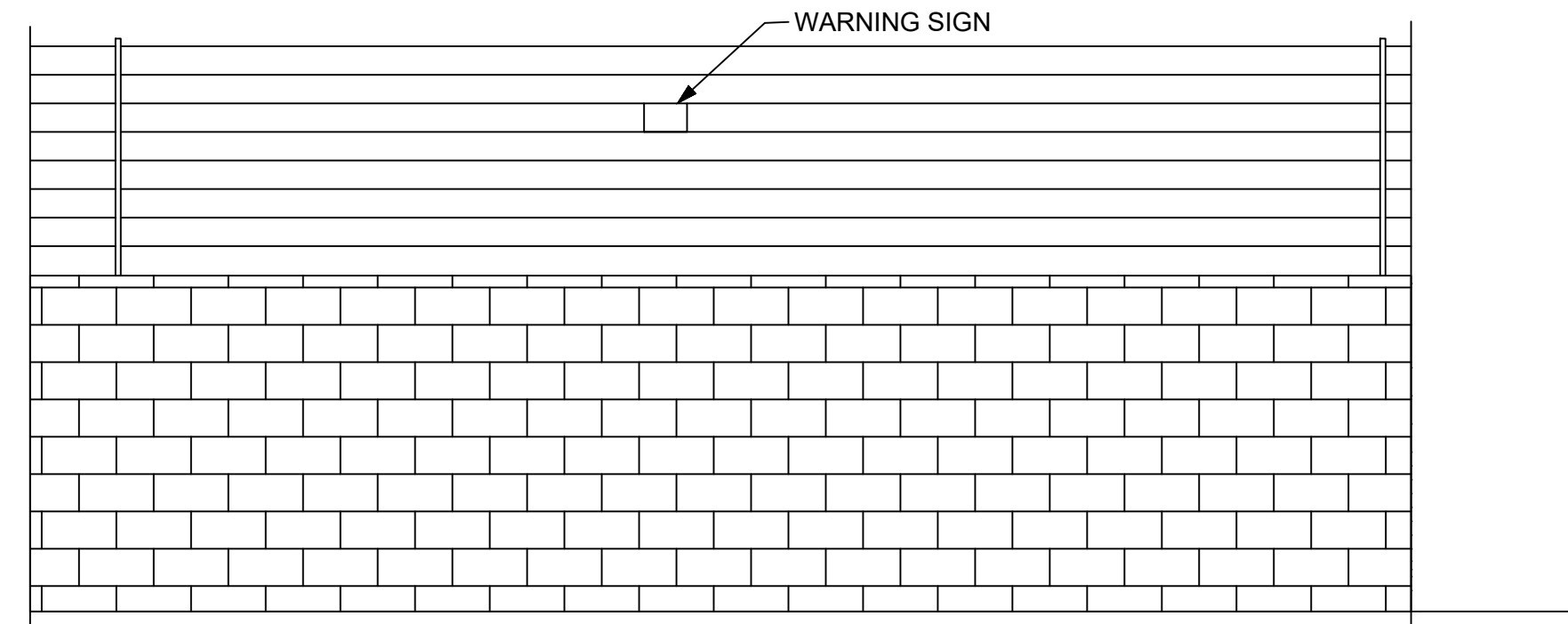
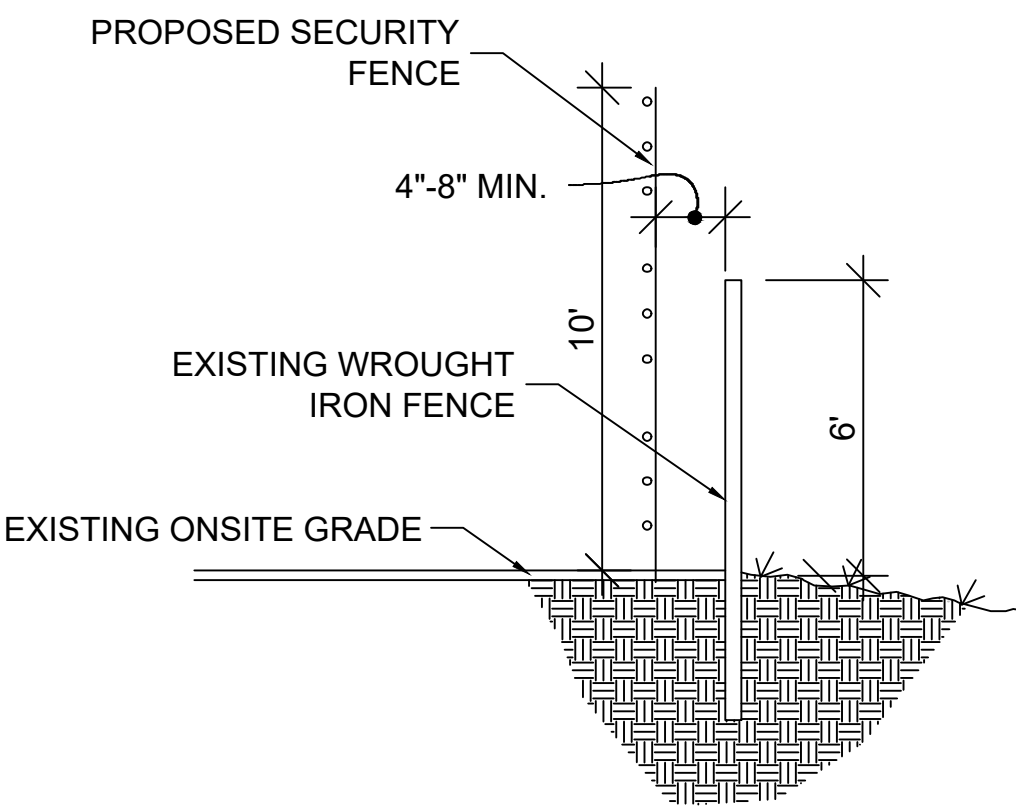


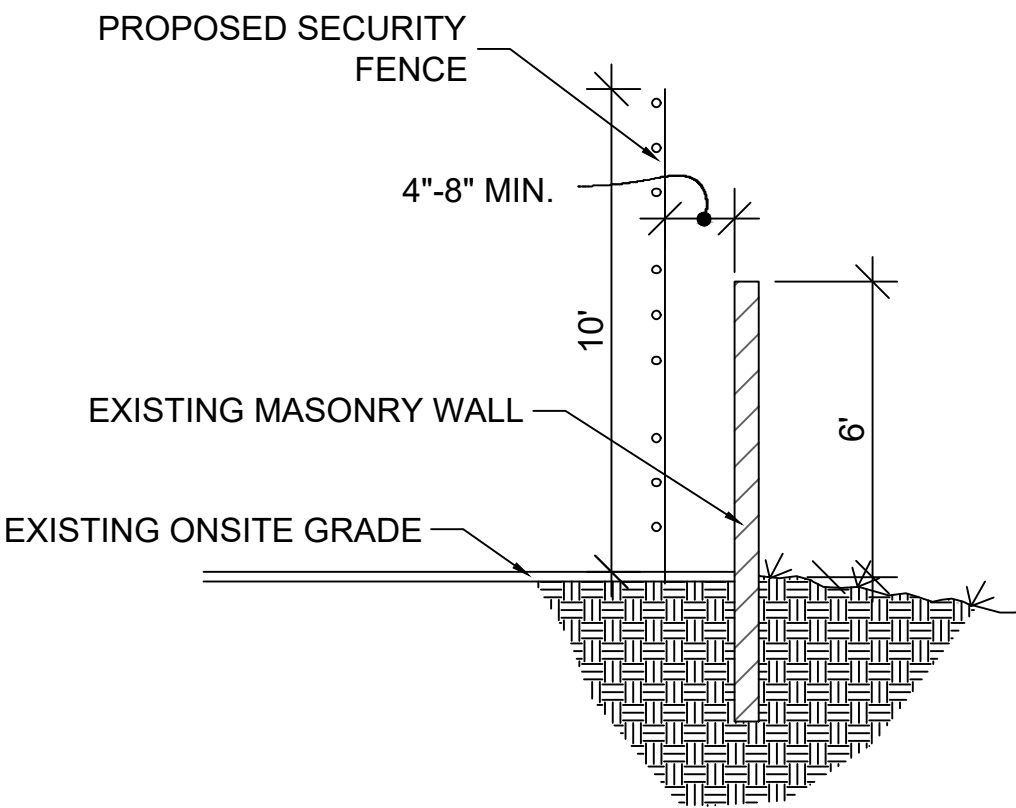
WROUGHT IRON FENCE ELEVATION
NTS. - NOTE SEPARATION BETWEEN WROUGHT IRON RODS IS 4" THEREFORE MESH TO DECREASE THE OPENING TO 1" MAX



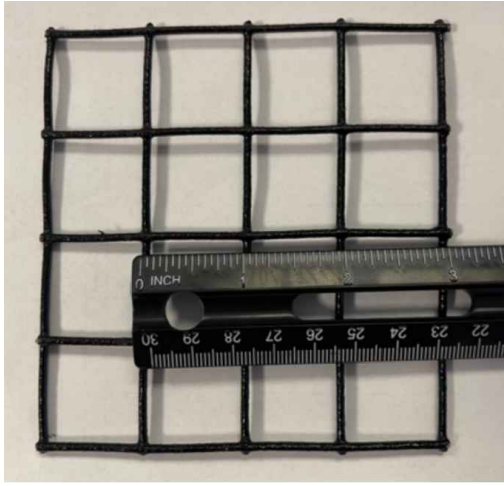
MASONRY WALL ELEVATION
NTS.



1
C-1 PERIMETER FENCE SECTION
NTS.



2
C-1 PERIMETER FENCE SECTION
NTS.



1x1 STEEL MESH

NOTES

POLE LOCATIONS:
STEEL POLES: TO BE LOCATED
APPROXIMATELY ON EACH SIDE OF GATE(S) &
EVERY 90° (OR GREATER) TURN IN FENCE LINE.
FIBERGLASS/INTERMEDIATE POLES: TO BE
LOCATED APPROXIMATELY EVERY 30'

DISCLAIMER:
POLE LOCATIONS MAY SLIGHTLY DEVIATE
FROM STIPULATIONS ABOVE DUE TO ON-SITE
CONDITIONS

PROPERTY OWNER

5527 28TH STREET LLC
9529 8TH ST,
RANCHO CUCAMONGA CA 91730

PROJECT DATA

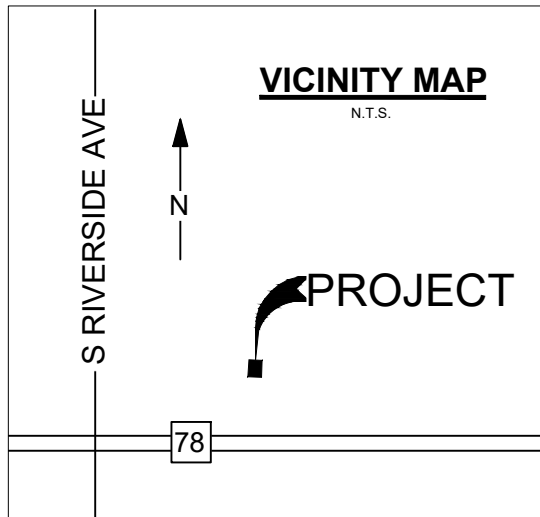
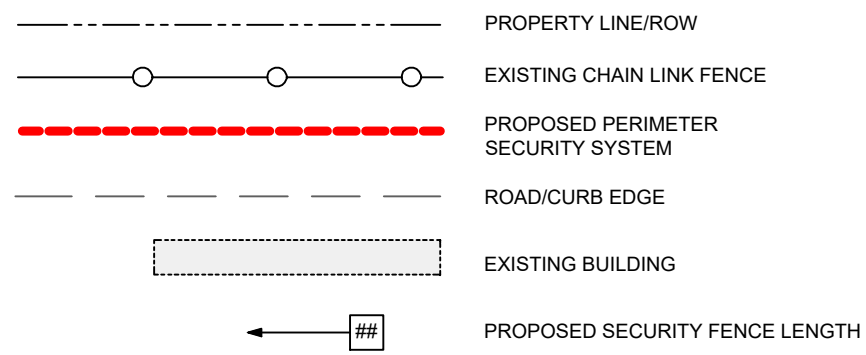
APN: 0132-211-05-0000
ZONING: Gateway Specific Plan
ACRES: 1.00

APN: 0132-211-06-0000
ZONING: Gateway Specific Plan
ACRES: 0.18

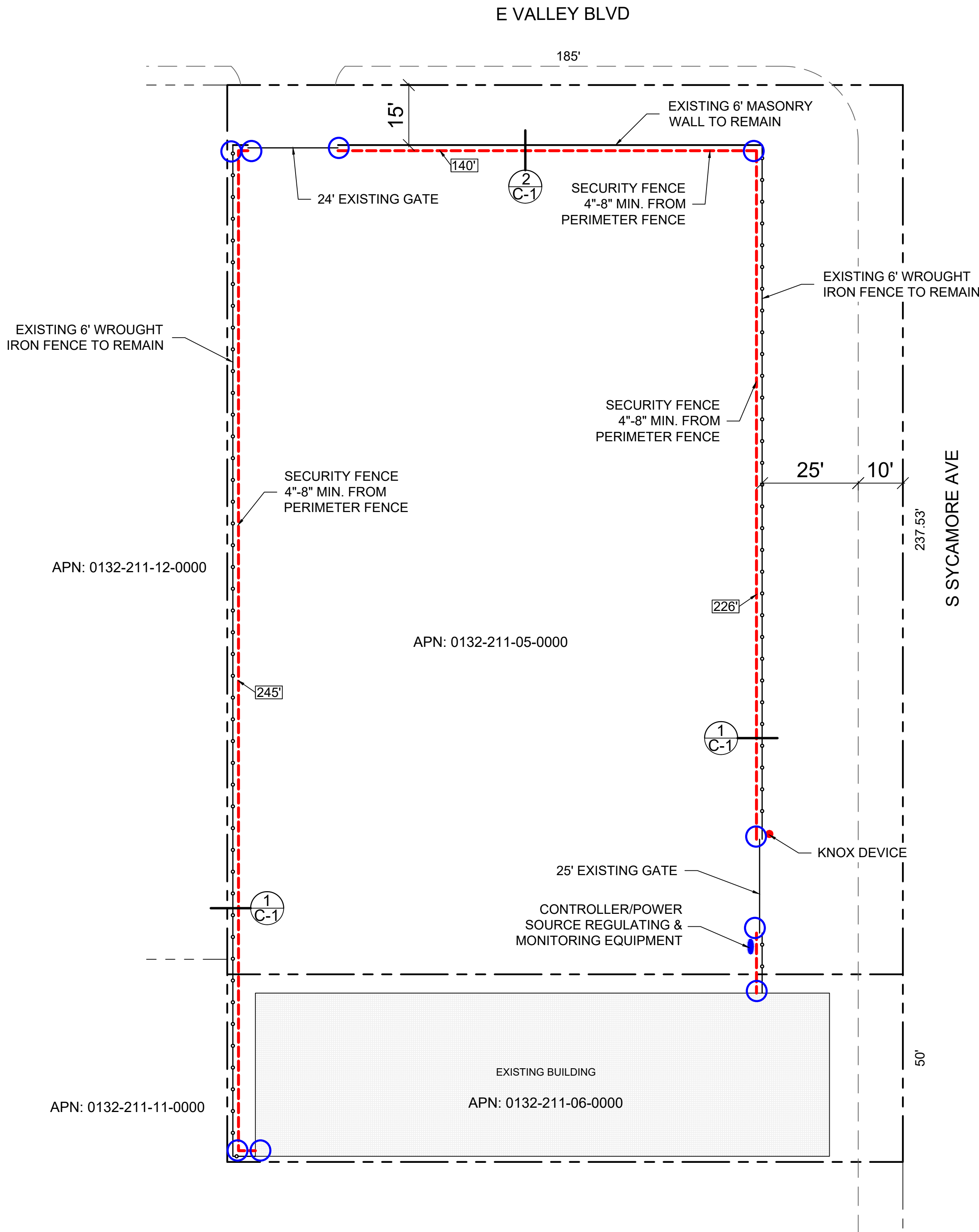
SITE PLAN REQUEST TO AUTHORIZE
A SECURITY SYSTEM FOR:

STEVE'S TOWING
1746 S. SYCAMORE AVE
RIALTO, CA 92376

LEGEND



O DENOTES LOCATIONS FOR STEEL POLE
PER 300' MAX SPACING CALCULATIONS
AND NOTES THIS SHEET



SITE PLAN
SCALE: 1" = 20'
0 10' 20' 40'

#	DATE / DESCRIPTION



AMAROK
ULTIMATE PERIMETER SECURITY

550 Assembly Street, 5th Floor Columbia, SC 29201 PH: 803-786-6333

PROJECT:
STEVE'S TOWING
1746 S. SYCAMORE AVE
RIALTO, CA 92376

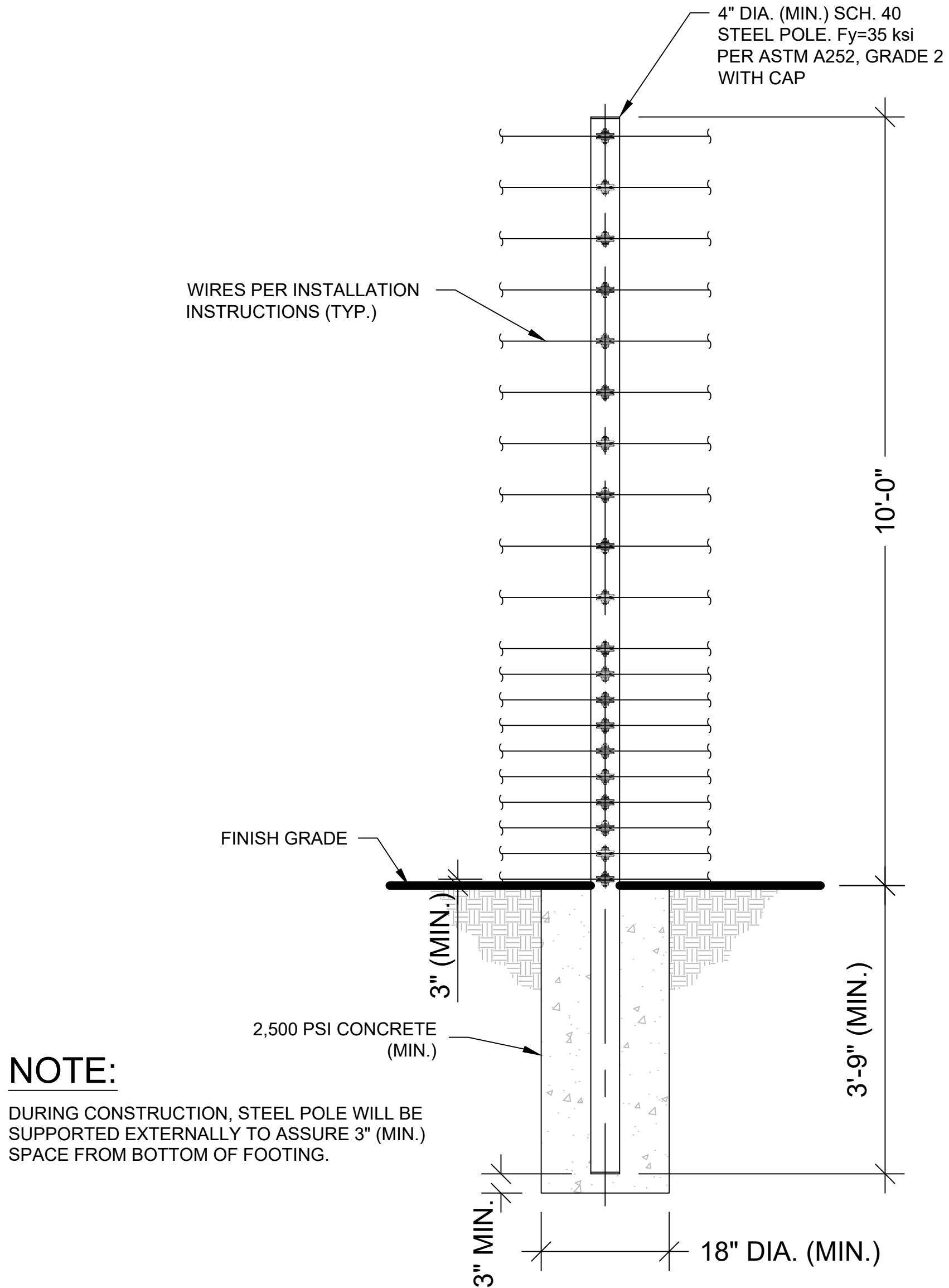
SHEET TITLE:
SITE PLAN

APPLICANT: AMAROK
550 ASSEMBLY ST 5TH FL
COLUMBIA SC 29201
803-404-6189

ENGINEER: FDR ENGINEERS, PLLC.
121 KITTY HAWK DR
MORRISVILLE NC 27560
919-967-6100

DATE: 08/17/2022
SCALE: SEE PLAN

SHEET
C-1
1 of 3

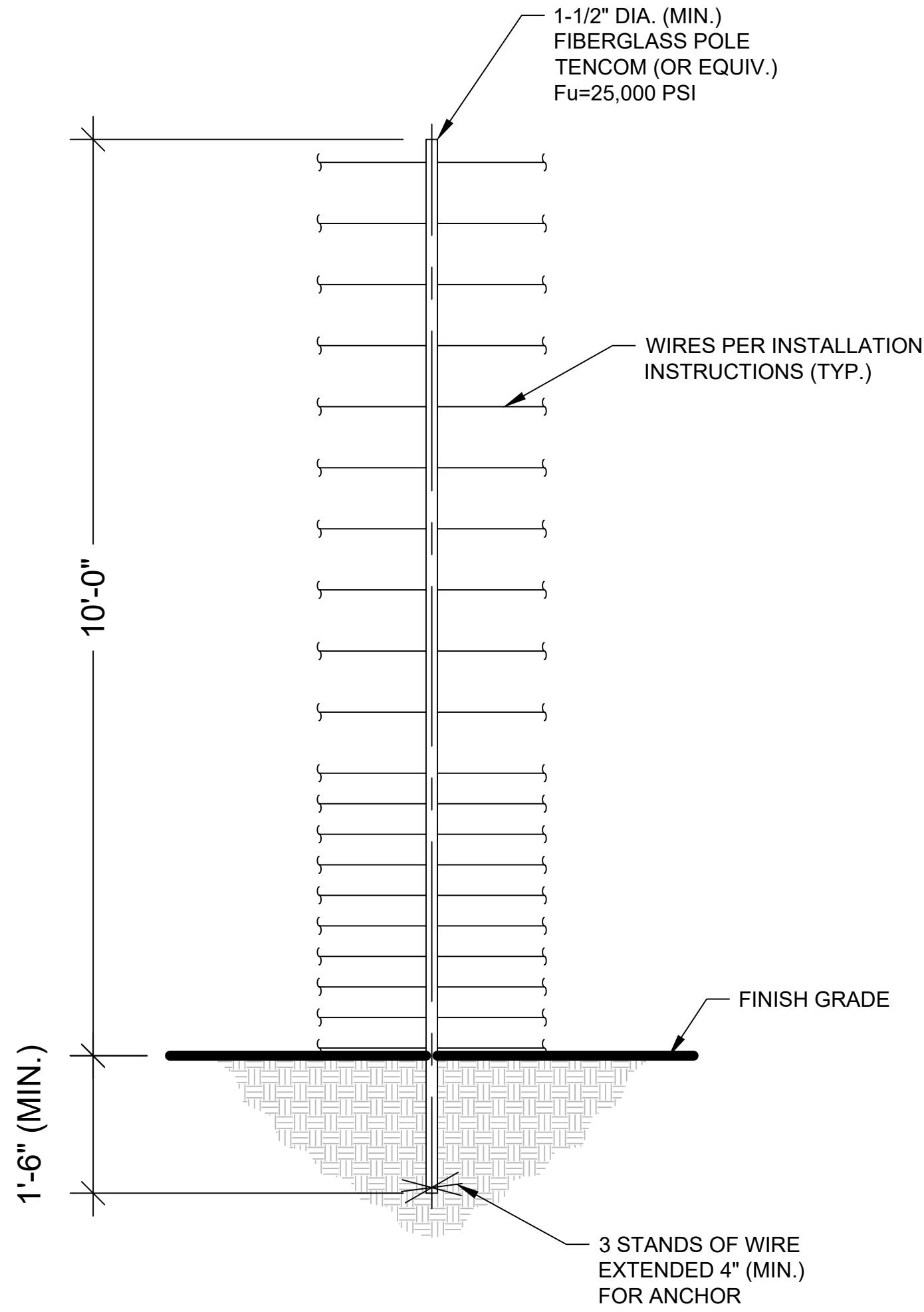


STEEL POLE DETAIL
SCALE: NONE
(STRUCTURAL)



WARNING SIGNS SHALL BE PLACED AT EACH ENTRANCE OF THE PROPERTY AND 30 FEET ON CENTER THEREAFTER

EXAMPLE WARNING SIGN @ 9"x12"



FIBERGLASS POLE DETAIL

SCALE: NONE
(NON-STRUCTURAL, NON-LOAD BEARING WIRE SEPARATOR)

GATE DETAIL NOTES:

- BRACE BANDS ARE INSTALLED AS HIGH AS POSSIBLE UNDER #3 AND #9, 2" (MIN.) UNDER #12, #15, AND #17, UNDER #19 AND AS HIGH ON THE GATE AS POSSIBLE. MAXIMUM DISTANCE OF 2' BETWEEN BRACE BANDS.
- SPRINGS ARE LOCATED ON HINGE SIDE OF SWING GATE AND REAR OF SLIDE GATE.
- ALL CONTACTS MUST INCLUDE SPRINGS.
- ALL CONTACTS MUST HAVE BOLT THROUGH FIBERGLASS (NO SET SCREWS).
- ALL BRACE BANDS HOOKED TO CHAIN LINK MUST HAVE SET SCREW.
- EVERY GATE PANEL MUST HAVE A SIGN.
- ALL GATE CONTACTS MUST BE SECURE IN A MANOR THAT ENSURES CONTACT WILL EASILY BE MADE.
- GATE MOUNTS WILL NOT IMPACT THE FUNCTIONALITY OF THE GATE.

RAPID TIGHTENERS

RAPID TIGHTENERS ARE INSTALLED IN EVERY SECTION - BETWEEN 6" INCHES AND 3 FEET FROM A FIBERGLASS POLE - TOWARD THE CENTER OF THE RUN.

THE TIGHTENERS ARE ALTERNATED ON OPPOSITE SIDES OF THE POLE TO PREVENT GROUNDS FROM HITTING WIRES WITH CURRENT.

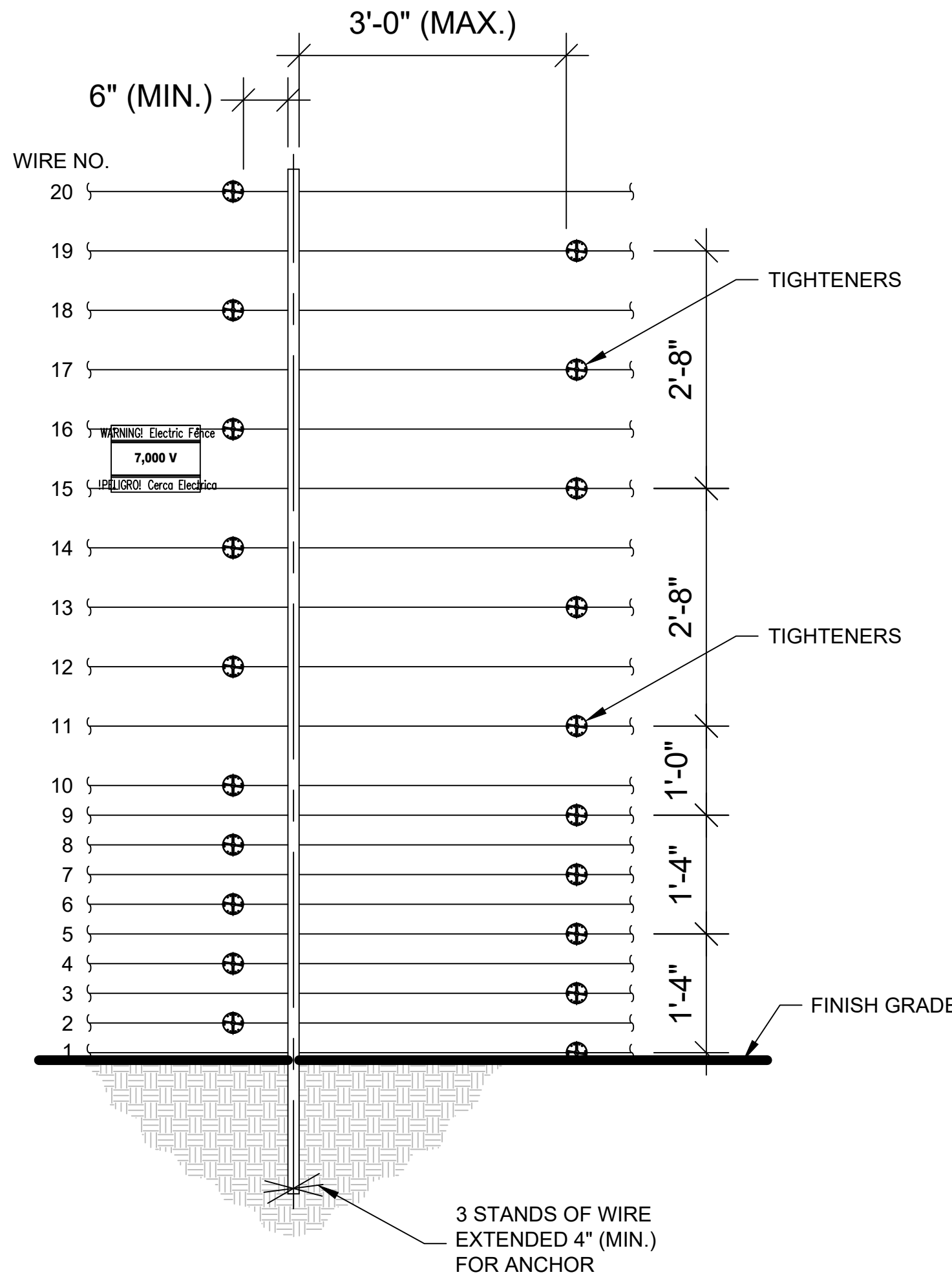
WIRE SHOULD BE WRAPPED TWO OR THREE TIMES AROUND EACH TIGHTENER.

WARNING SIGNS

WARNING SIGNS MUST BE INSTALLED EVERY 30 FEET, WHICH IS THE MAXIMUM DISTANCE BETWEEN SIGNS.

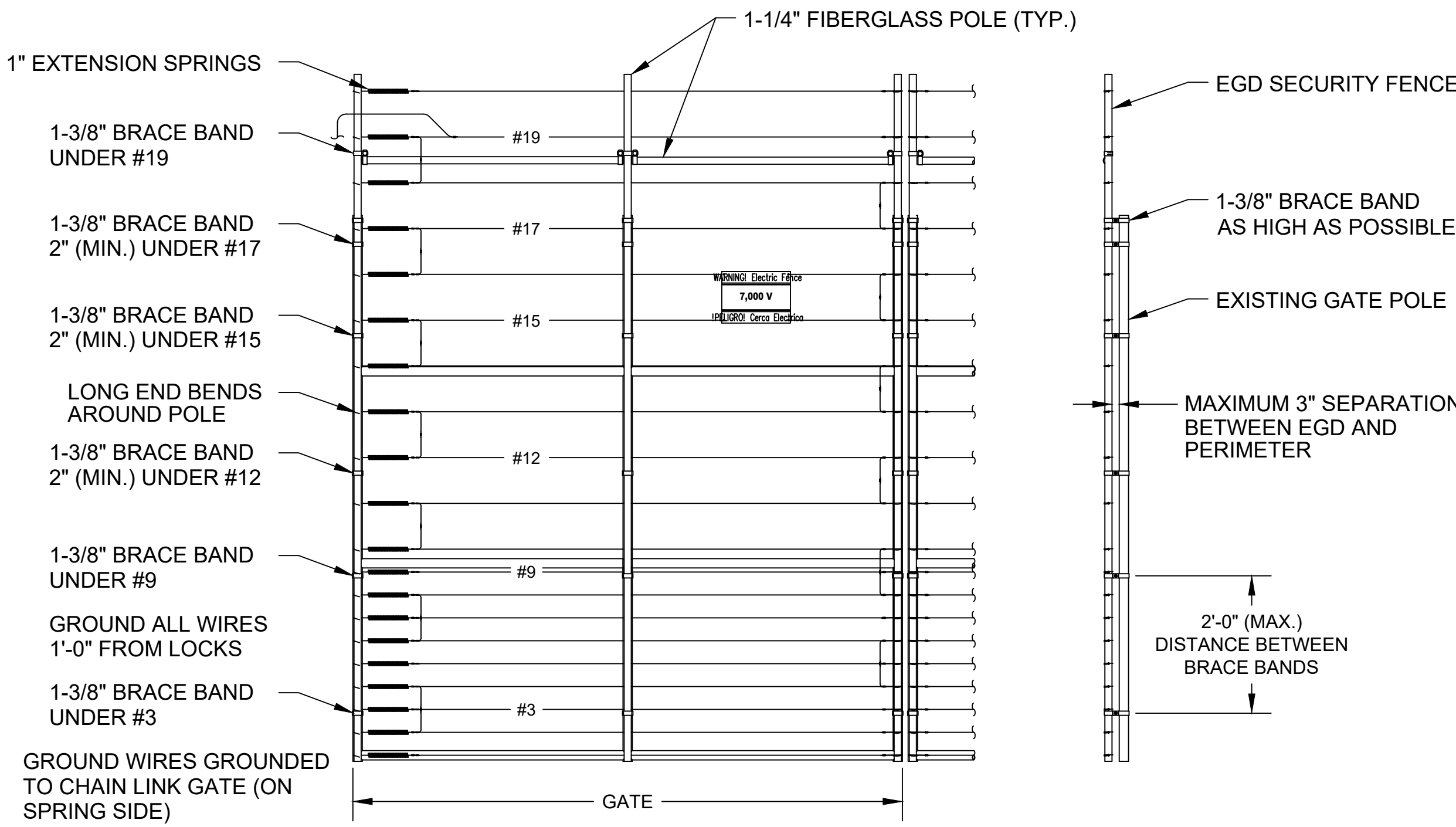
ALL WARNING SIGNS SHOULD BE MOUNTED EITHER BETWEEN WIRES 15 & 16 OR AT BEST VISIBLE HEIGHT.

IF INSTALLED BEHIND A SOLID FENCE, WARNING SIGNS SHOULD ALSO BE PLACED ON OR ABOVE THE PERIMETER FENCE.



WIRE CONNECTIONS

SCALE: NONE
(FIBERGLASS POLE)



GATE DETAIL

SCALE: NONE

#	DATE / DESCRIPTION



PROJECT:
STEVE'S TOWING
1746 S. SYCAMORE AVE
RIALTO, CA 92376

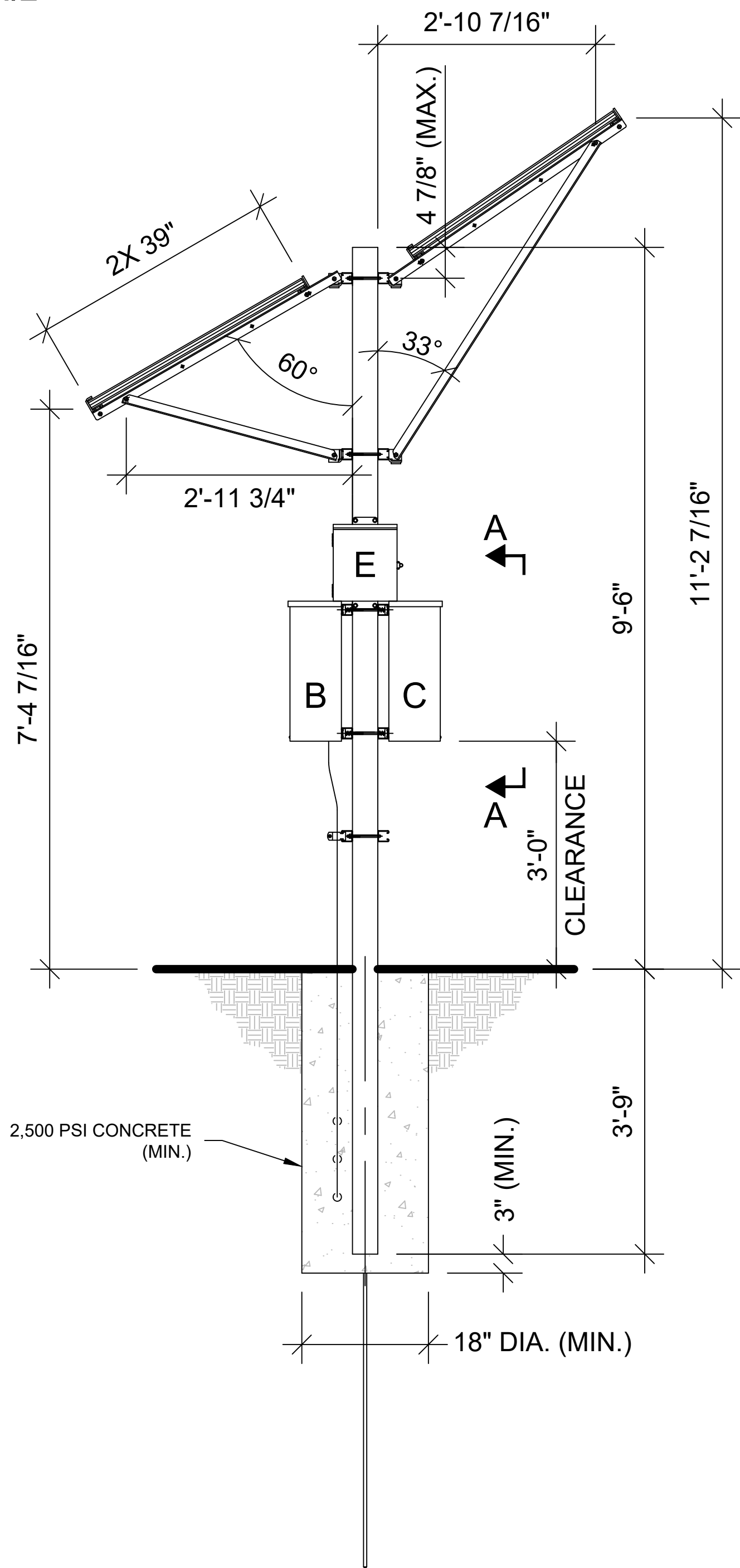
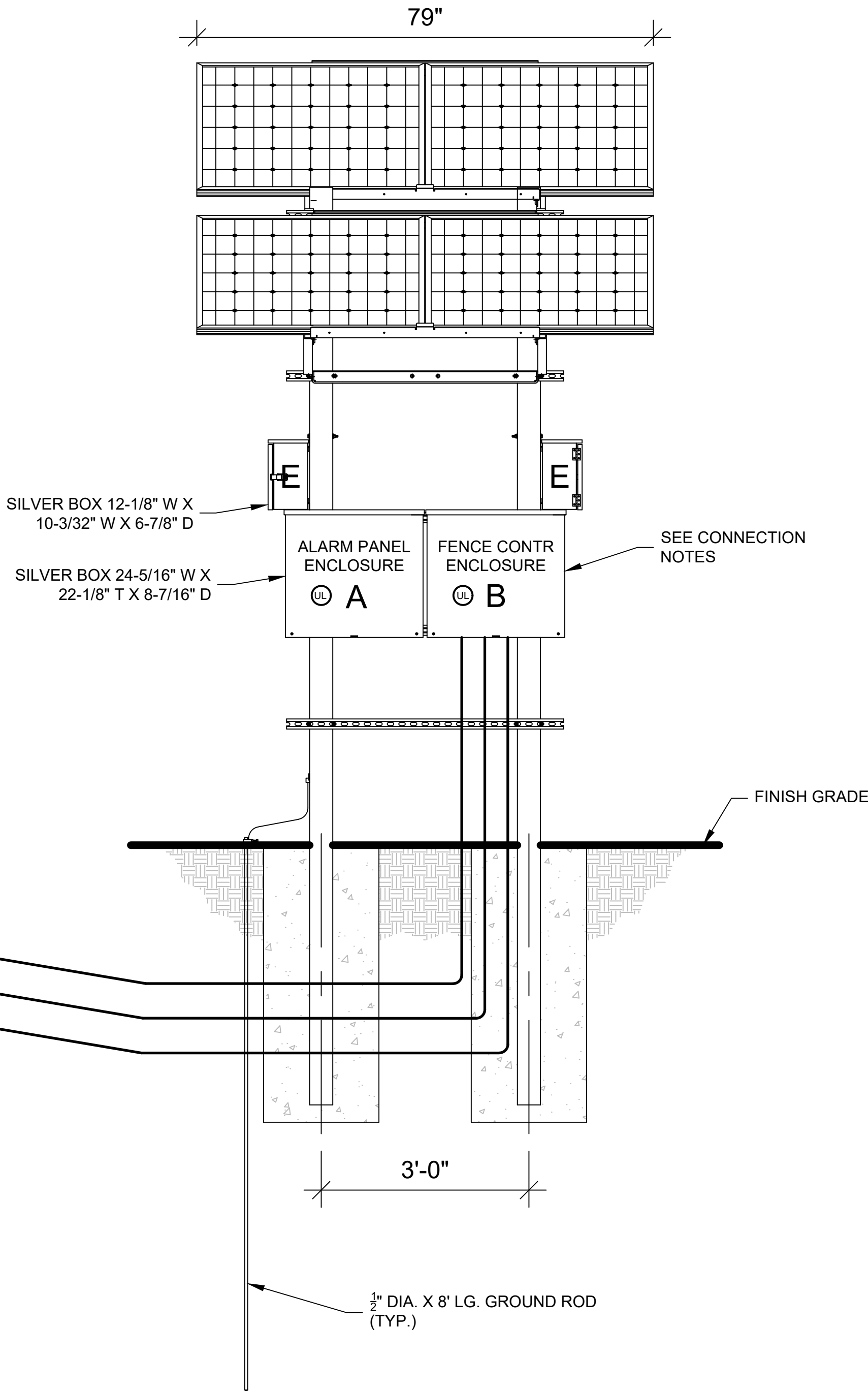
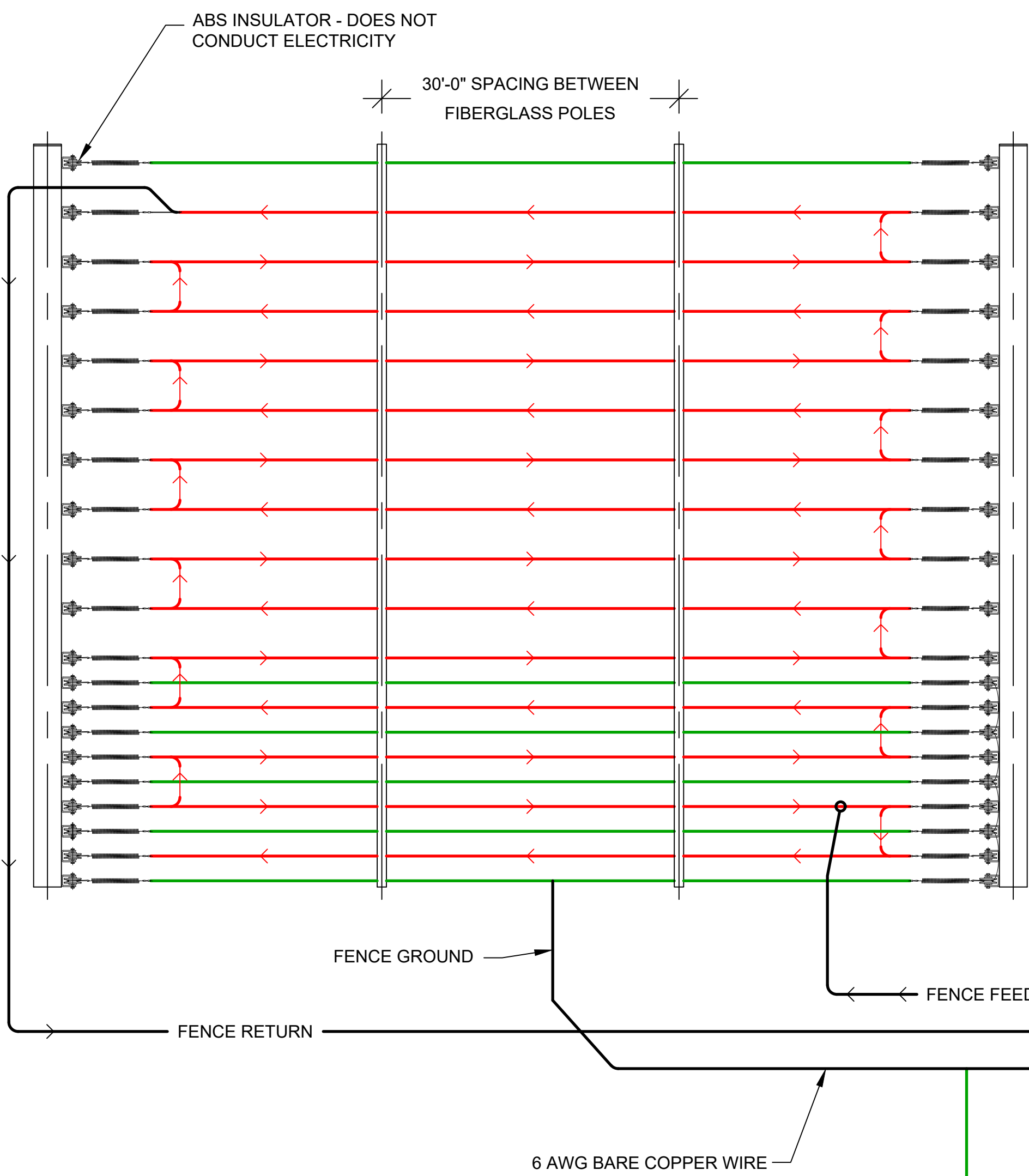
SHEET TITLE: TYPICAL DETAILS

APPLICANT: AMAROK
550 ASSEMBLY ST 5TH FL
COLUMBIA SC 29201
803-404-6189
ENGINEER: FDR ENGINEERS, PLLC.
121 KITTY HAWK DR
MORRISVILLE NC 27560
919-967-6100

DATE: 07/28/2022
SCALE: SEE PLAN

SHEET
C-2
2 of 3

WIRE RUN DETAILS & OUTSIDE MOUNTED ELECTRONICS/CONTROLLER WITH STEEL POLE DETAIL



CONNECTION NOTES:

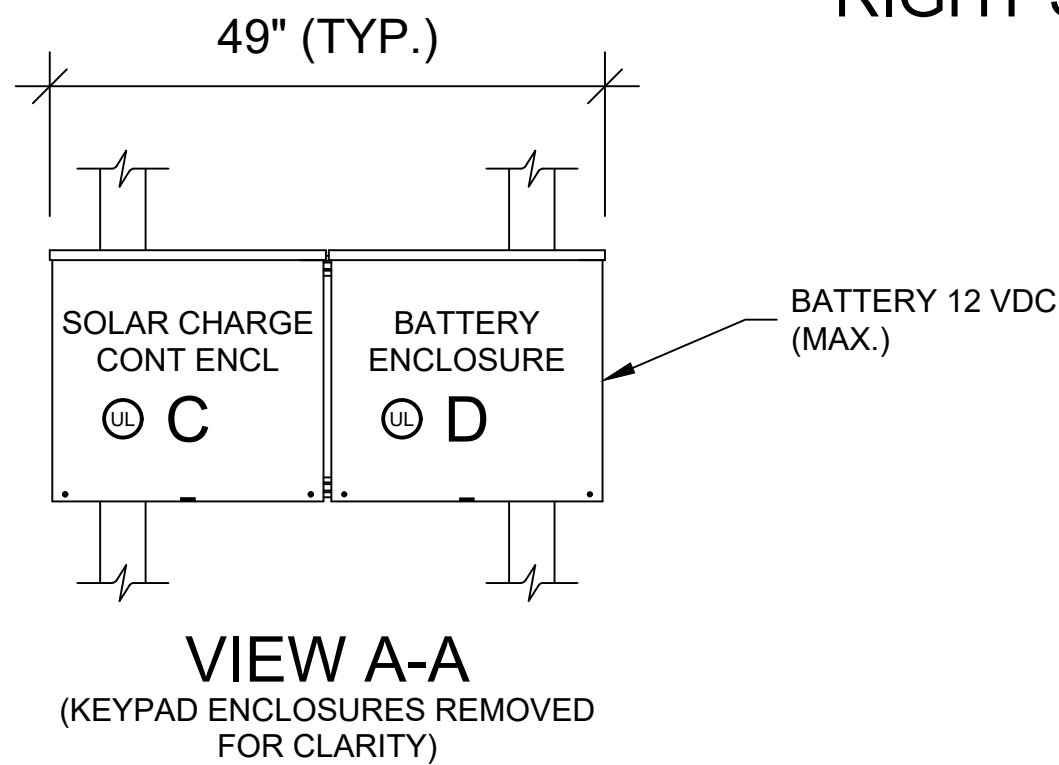
- A: ALARM PANEL ENCLOSURE - HOUSES THE ALARM CONTROL PANEL. THIS BOX INTERCONNECTS TO "B" / FENCE CONTROLLER ENCLOSURE USING THE APS WHIP / 10 CONDUCTOR CABLE AND "C" / SOLAR CHARGE CONTROLLER USING TWO CONDUCTOR CABLE. ENCLOSURE WEIGHT 21 LBS. (MAX.).
- B: FENCE CONTROLLER ENCLOSURE - HOUSES THE FENCE ENERGIZER OR EQUIVALENT. THIS BOX CONNECTS TO "A" / ALARM PANEL ENCLOSURE USING THE APS WHIP / 10 CONDUCTOR CABLE. ENCLOSURE WEIGHT 22 LBS. (MAX.).
- C: SOLAR CHARGE CONTROLLER ENCLOSURE - HOUSES POWER ELEMENTS FOR SOLAR CHARGE CONTROLLER AND DISCONNECTS FOR SOLAR, BATTERY, AND LOAD CONNECTIONS. POWER UP PROCEDURE: TURN ON BATTERY BREAKER FIRST, THEN TURN ON SOLAR BREAKER. THE ELECTRONICS POWER IS CONTROLLED BY BY THE LOAD BREAKER. ENCLOSURE WEIGHT 25 LBS. (MAX.).
- D: BATTERY ENCLOSURE - HOUSES THE BATTERIES AND INTERCONNECTS TO "C" / SOLAR CHARGE CONTROLLER ENCLOSURE USING TWO CONDUCTOR 14G AND 10G THWN WIRES. ENCLOSURE WEIGHT 145 LBS. (MAX.).
- E: KEYPAD ENCLOSURE - HOUSES THE KEYPAD. THIS BOX INTERCONNECTS TO "B" USING 10 CONDUCTOR / 18 AWG WIRE. ENCLOSURE WEIGHT 12 LBS. (MAX.).

NOTES:

MOUNT 4 SILVER BOXES TO A PAIR OF 4"x4"x180" LG. GALVANIZED ASTM A500 STEEL POLES. BOTTOM OF THE LOWEST BOX MUST BE A MINIMUM OF 3 FEET ABOVE GROUND LEVEL. THE SUPPORT POLES MUST BE EMBEDDED AT A MINIMUM OF 3'-9" BELOW GROUND LEVEL.

FRONT ELEVATION

RIGHT SIDE ELEVATION



#	DATE / DESCRIPTION



AMAROK
ULTIMATE PERIMETER SECURITY

550 Assembly Street, 5th Floor Columbia, SC 29201 PH: 803-786-6333

PROJECT:
STEVE'S TOWING
1746 S. SYCAMORE AVE
RIALTO, CA 92376

SHEET TITLE:
TYPICAL DETAILS

APPLICANT: AMAROK
550 ASSEMBLY ST 5TH FL
COLUMBIA SC 29201
803-404-6189

ENGINEER: FDR ENGINEERS, PLLC.
121 KITTY HAWK DR
MORRISVILLE NC 27560
819-867-5100

DATE: 07/28/2022
SCALE: SEE PLAN

SHEET
C-3
3 of 3