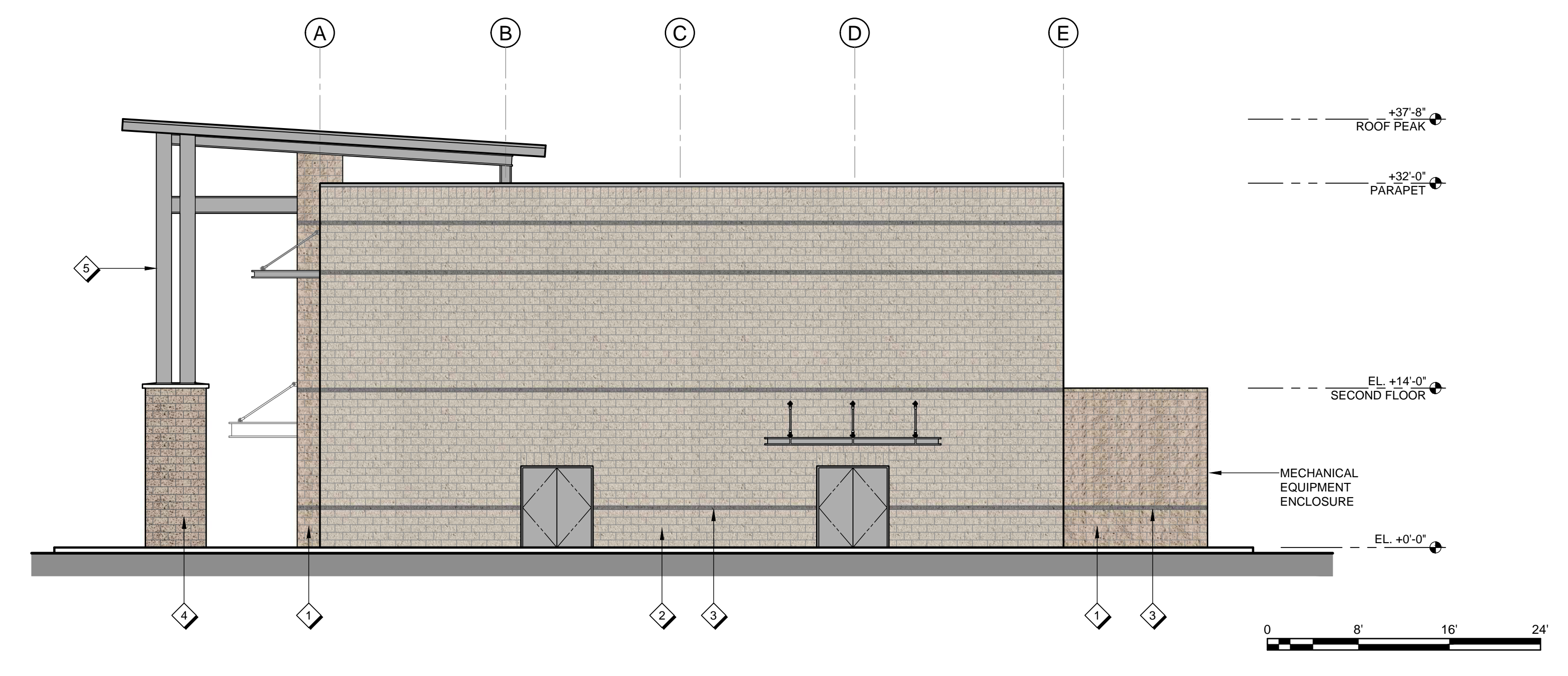


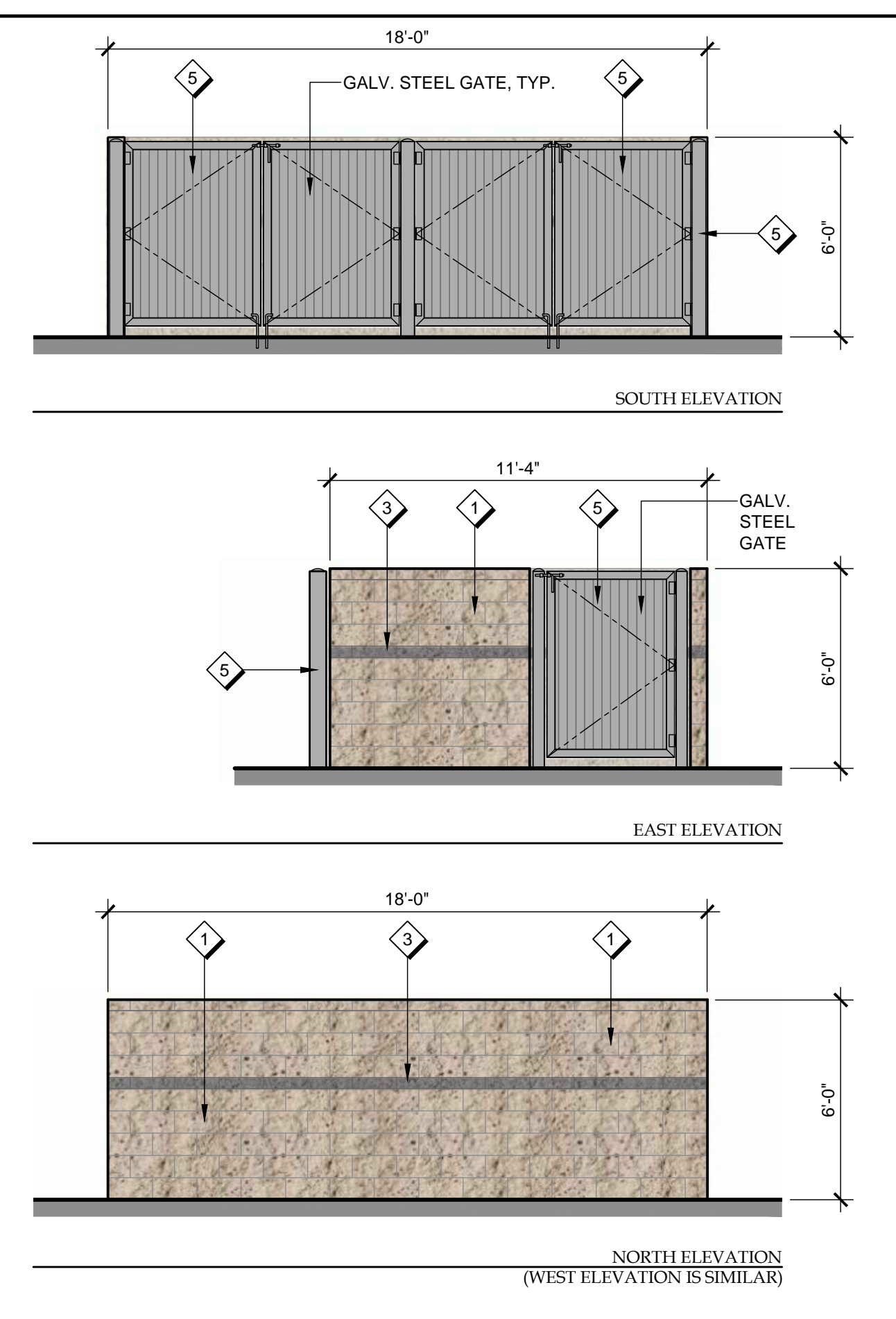
OFFICE BUILDING - EAST ELEVATION

1/8" = 1'-0" 4



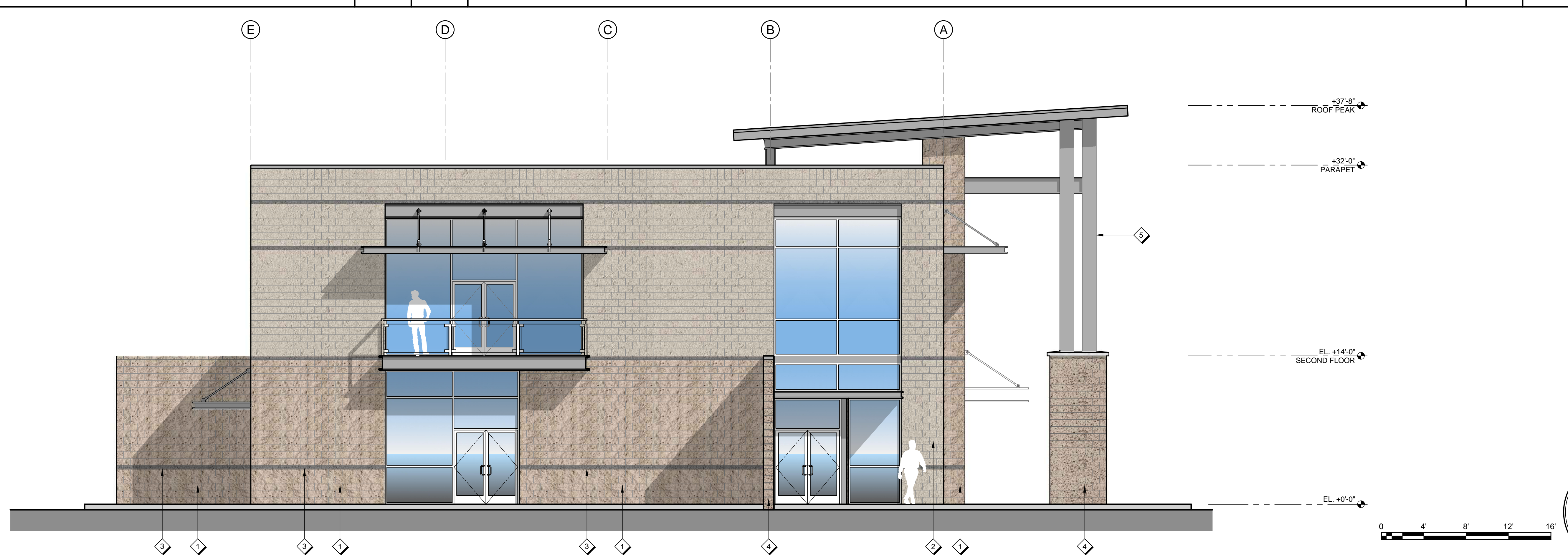
OFFICE BUILDING - SOUTH ELEVATION

1/8" = 1'-0" 3



TRASH ENCLOSURE

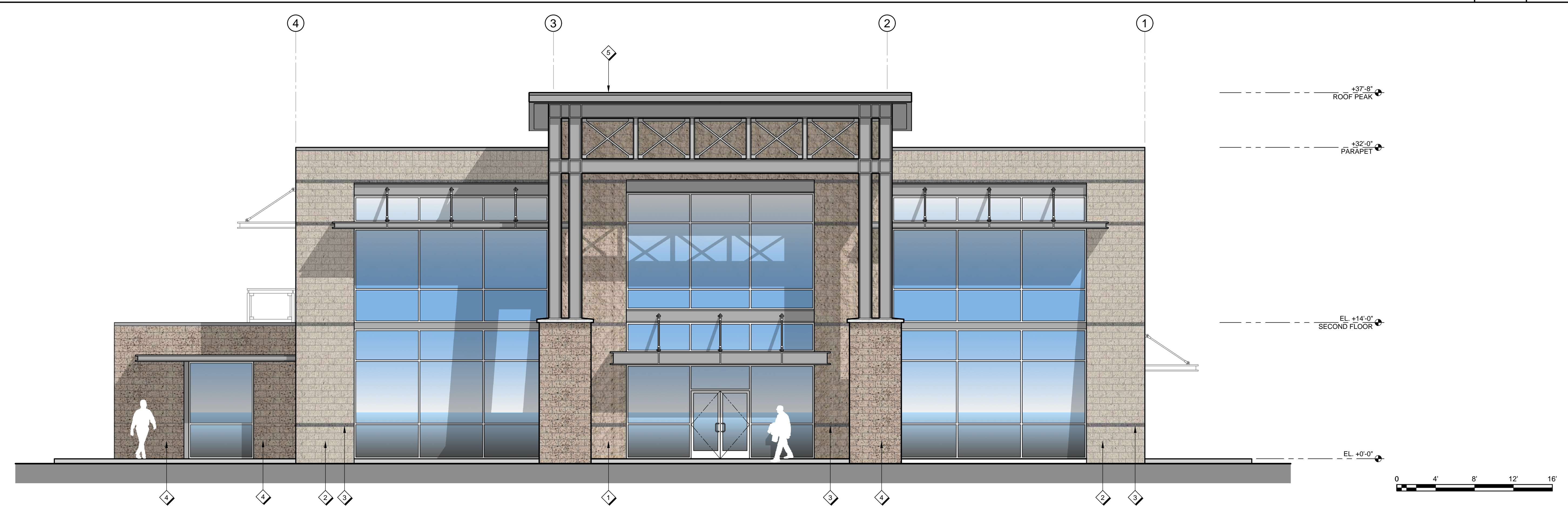
1/4" = 1'-0" 5



OFFICE BUILDING - NORTH ELEVATION

3/16" = 1'-0" 2

MATERIAL & COLOR SAMPLE BOARD:



OFFICE BUILDING - WEST ELEVATION

3/16" = 1'-0" 1

Mark	Date	Revisions

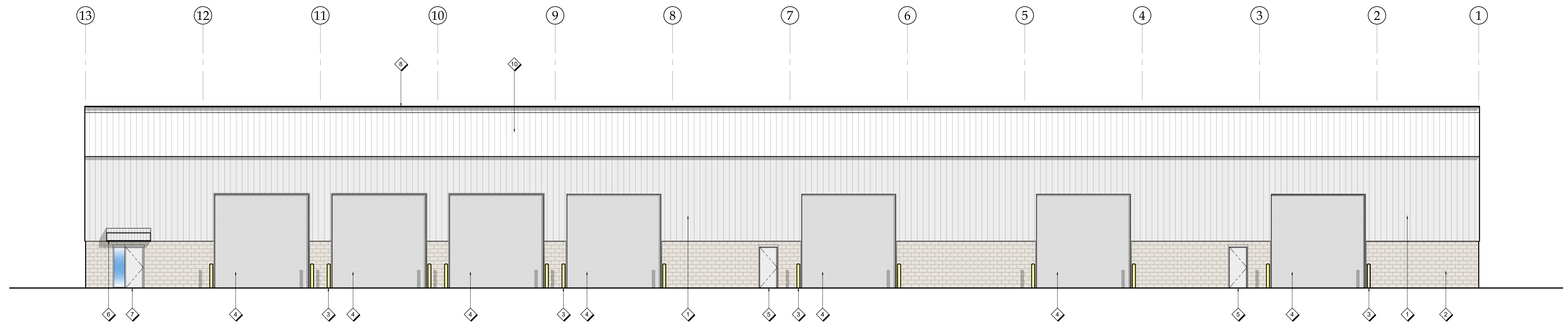
ANGELUS BLOCK CO., INC.
 1850 JAMES DR. #211 WEST COVINA, CA 91790
 APN'S: 028-04-01-57-0000, 028-04-01-57-0001, 028-04-01-57-0002, 028-04-01-57-0003, 028-04-01-57-0004, 028-04-01-57-0005, 028-04-01-57-0006, 028-04-01-57-0007, 028-04-01-57-0008, 028-04-01-57-0009, 028-04-01-57-0010, 028-04-01-57-0011, 028-04-01-57-0012, 028-04-01-57-0013, 028-04-01-57-0014, 028-04-01-57-0015, 028-04-01-57-0016, 028-04-01-57-0017, 028-04-01-57-0018, 028-04-01-57-0019, 028-04-01-57-0020, 028-04-01-57-0021, 028-04-01-57-0022, 028-04-01-57-0023, 028-04-01-57-0024, 028-04-01-57-0025, 028-04-01-57-0026, 028-04-01-57-0027, 028-04-01-57-0028, 028-04-01-57-0029, 028-04-01-57-0030, 028-04-01-57-0031, 028-04-01-57-0032, 028-04-01-57-0033, 028-04-01-57-0034, 028-04-01-57-0035, 028-04-01-57-0036, 028-04-01-57-0037, 028-04-01-57-0038, 028-04-01-57-0039, 028-04-01-57-0040, 028-04-01-57-0041, 028-04-01-57-0042, 028-04-01-57-0043, 028-04-01-57-0044, 028-04-01-57-0045, 028-04-01-57-0046, 028-04-01-57-0047, 028-04-01-57-0048, 028-04-01-57-0049, 028-04-01-57-0050, 028-04-01-57-0051, 028-04-01-57-0052, 028-04-01-57-0053, 028-04-01-57-0054, 028-04-01-57-0055, 028-04-01-57-0056, 028-04-01-57-0057, 028-04-01-57-0058, 028-04-01-57-0059, 028-04-01-57-0060, 028-04-01-57-0061, 028-04-01-57-0062, 028-04-01-57-0063, 028-04-01-57-0064, 028-04-01-57-0065, 028-04-01-57-0066, 028-04-01-57-0067, 028-04-01-57-0068, 028-04-01-57-0069, 028-04-01-57-0070, 028-04-01-57-0071, 028-04-01-57-0072, 028-04-01-57-0073, 028-04-01-57-0074, 028-04-01-57-0075, 028-04-01-57-0076, 028-04-01-57-0077, 028-04-01-57-0078, 028-04-01-57-0079, 028-04-01-57-0080, 028-04-01-57-0081, 028-04-01-57-0082, 028-04-01-57-0083, 028-04-01-57-0084, 028-04-01-57-0085, 028-04-01-57-0086, 028-04-01-57-0087, 028-04-01-57-0088, 028-04-01-57-0089, 028-04-01-57-0090, 028-04-01-57-0091, 028-04-01-57-0092, 028-04-01-57-0093, 028-04-01-57-0094, 028-04-01-57-0095, 028-04-01-57-0096, 028-04-01-57-0097, 028-04-01-57-0098, 028-04-01-57-0099, 028-04-01-57-0100



Permit No. A2.10
 Drawn By: F. LONI
 Signed: 11/24/2020

LONI INC.
 architecture + engineering
 1850 JAMES DR. #211 WEST COVINA, CA 91790
 T: 626.908.1977
 E: admin@loniarchitects.com
 www.loniarchitects.com

Any and all reproduction of this document is prohibited, including, but not limited to, making copies, photocopying or otherwise reproducing or disseminating the content of any part of this document, in whole or in part, for the specific purpose of...
 © 2020 by LONI, Inc.

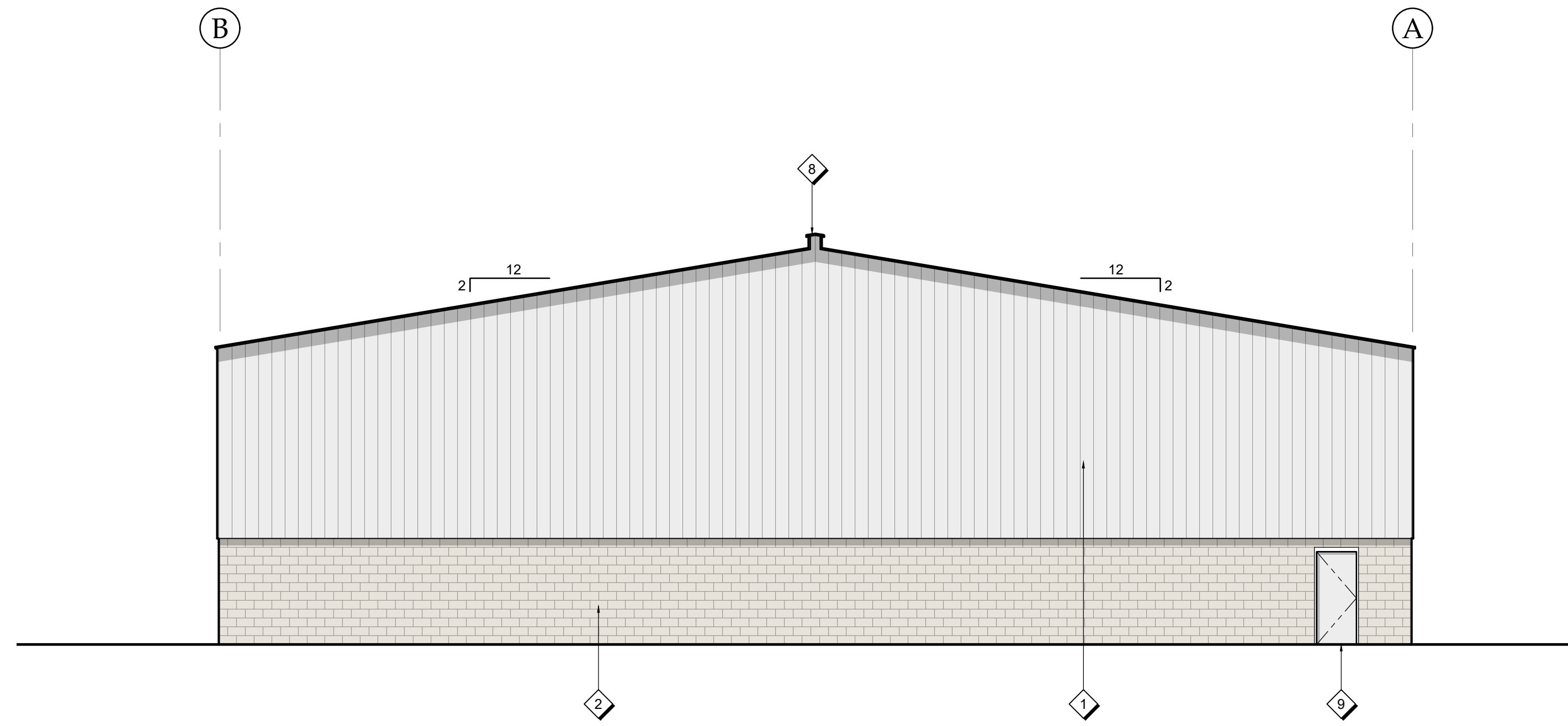


WEST ELEVATION

1/8"=1'-0" 4

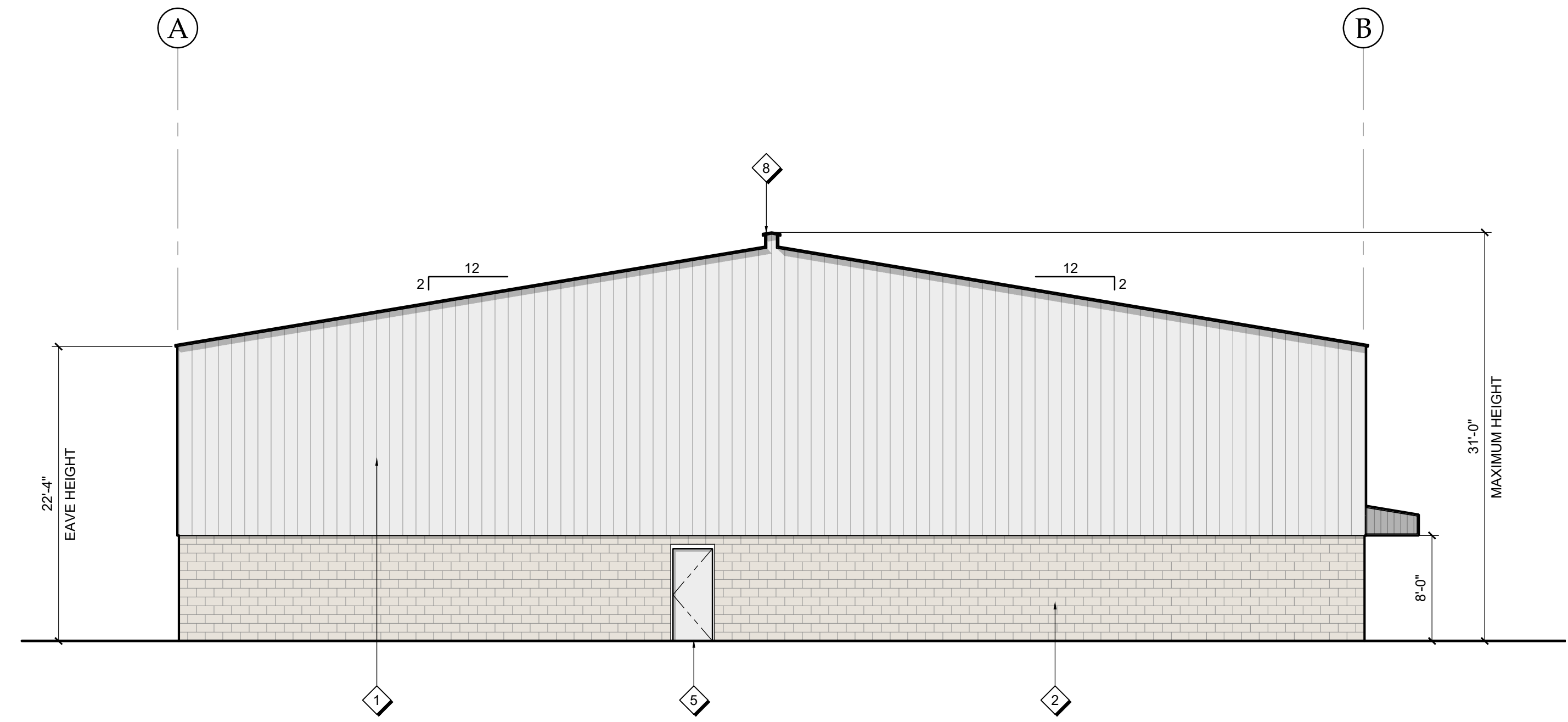
KEY NOTES:

- 1 CORRUGATED METAL PANELS, COLOR: LIGHT GRAY
- 2 CMU BASE WALL, 8"x8"x16", NATURAL GRAY SPLIT FACE
- 3 48"H CONCRETE FILLED STEEL BOLLARD, PAINTED SAFETY YELLOW
- 4 16'-0"W x 16'-0"H OVERHEAD COILING STEEL DOOR
- 5 3'-0"W x 7'-0"H MAN DOOR
- 6 CORRUGATED METAL PANEL CANOPY, COLOR: LIGHT GRAY
- 7 3'-0"W x 7'-0"H ENTRY DOOR w/ SIDELIGHT
- 8 CONTINUOUS RIDGE VENT
- 9 3'-0"W x 7'-0"H FIRE DEPT. ACCESS DOOR
- 10 CORRUGATED METAL PANELS w/ TRANSLUCENT PANELS, SEE ROOF PLAN, COLOR: LIGHT GRAY



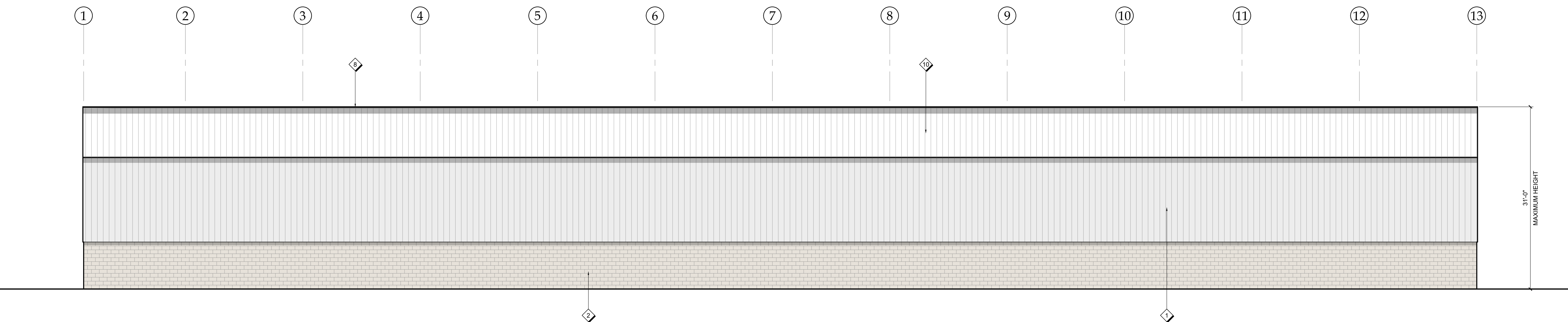
SOUTH ELEVATION

1/8"=1'-0" 3



NORTH ELEVATION

1/8"=1'-0" 2



WAREHOUSE AND INDUSTRIAL BUILDING - EAST ELEVATION

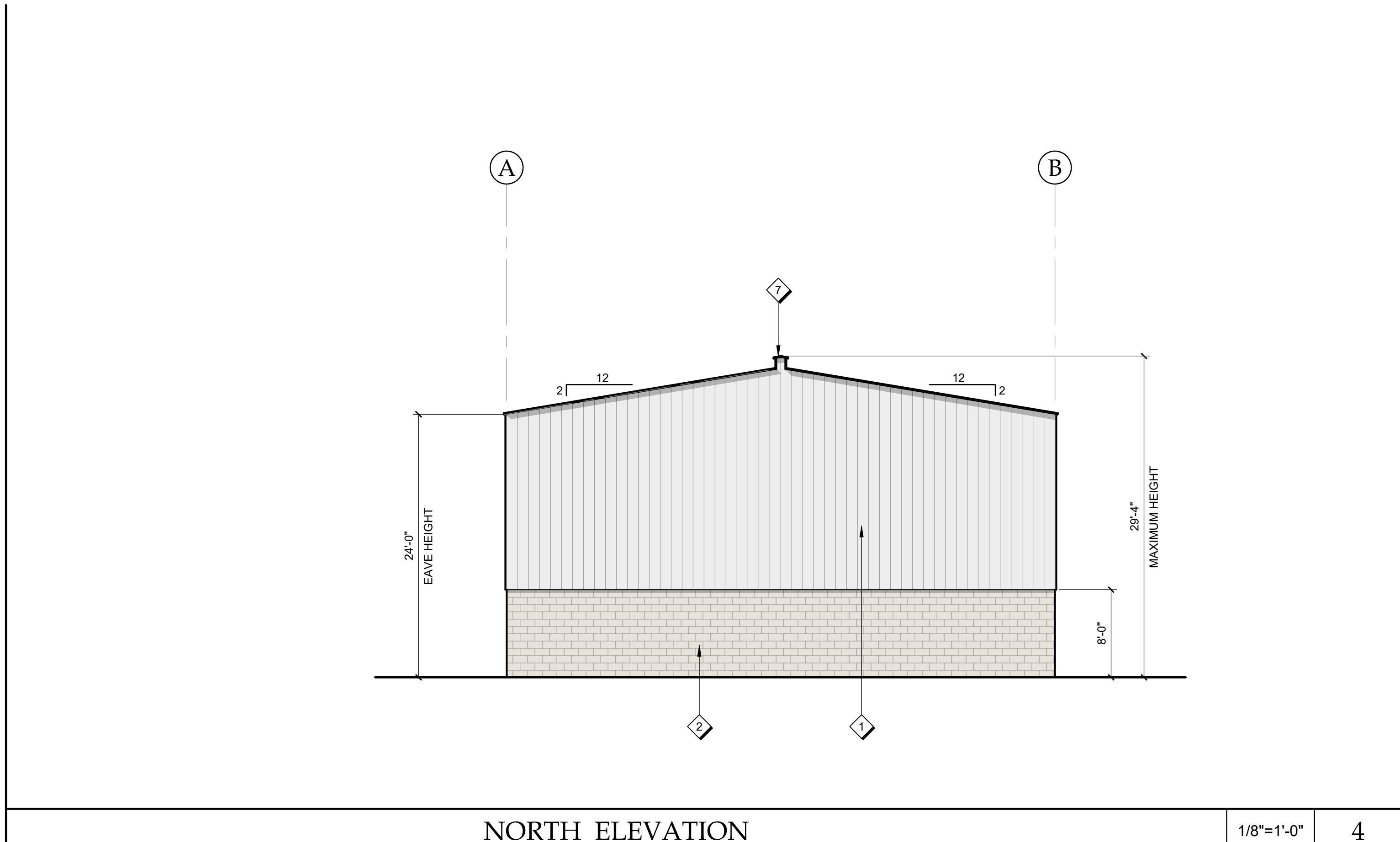
1/8"=1'-0" 1

Mark	Revisions	Date	Mark	Revisions	Date	Mark	Revisions
ANGELUS BLOCK CO., INC. REGISTERED MANUFACTURER OF CMU APNS: 0260-001-67-0000, 0260-061-41-0000, 0260-061-42-0000 RIALTO, CA 92316							
LONI architects + engineering 1050 Lakes Dr. #215 West Covina, CA 91790 T: 626.908.9377 E: admin@loniarchitects.com www.loniarchitects.com							
Drawn By	Permit No.	Permit Date					
JEST		11/24/2020					
Signed							
11/24/2020							
Sheet							
A2.12							
Job Number							
19-050							

Any and all reproduction of this document is prohibited, including but not limited to, making copies, transparent or reproducible copies of any kind, or scanning or digitizing the document into electronic media of any kind, without the prior express and written consent of LONI, INC. The extent of this document is that all labor and material be provided to make the work represented hereon complete and operational in every respect. Drawings are dimensioned and notes take precedence over drawings. Where there is a question as to what is required by this document, the more stringent, more restrictive, higher quality and greater quantity shall govern. This document, including, but not limited to, the text, drawings, designs and ideas shown herein and represented hereby, is an instrument of service, and as such, and shall remain, the sole and exclusive property of LONI, INC. and shall not be modified in any manner or by any means except by its owner, LONI, INC. Use of this document, in whole or in part, is limited to one time, for the specific purpose of implementing the work represented herein and no publication, or distribution, or other use of this document shall be made without the prior express and written consent of LONI, INC. © 2020 by LONI, Inc.

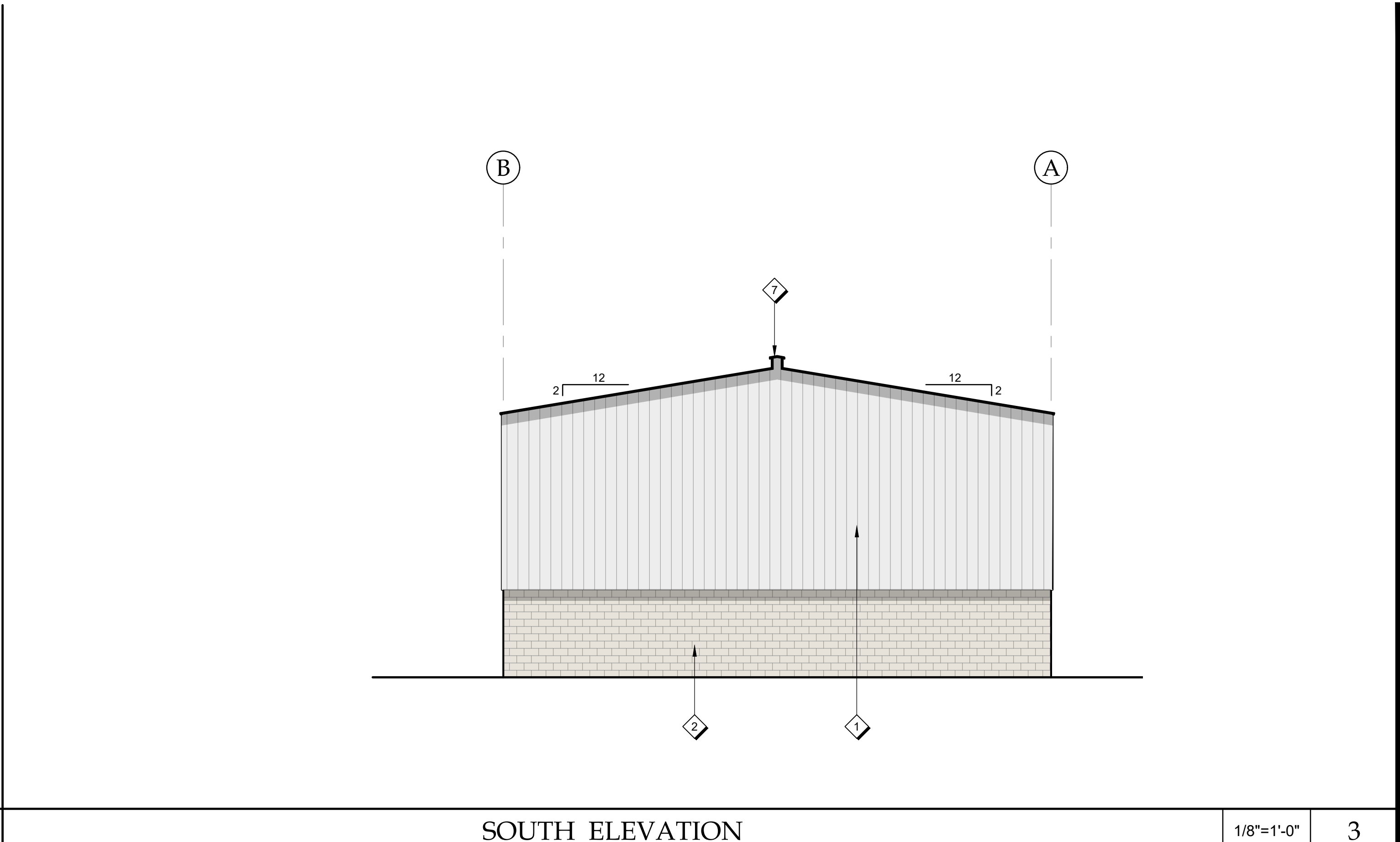
Any and all reproduction of this document is prohibited, including but not limited to, making copies, scanning or digitizing the document into electronic media of any kind, without the prior express and written consent of LONI, INC. The intent of this document is that all applicable codes and ordinances shall be fully complied with, and that all labor and material be provided to make the work represented hereon complete and operational in every respect. Drawings are dimensioned in feet and inches, and shall not be modified in any manner or by any means except by its owner, LONI, INC. Use of this document, in whole or in part, is limited to one time, for the specific purpose of implementing the work represented hereon and for no publication, or distribution, or other use of this document shall be made without the prior express and written consent of LONI, INC. Where there is a question as to what is required by this document the more stringent, more restrictive, more detailed, higher quality and greater quantity shall govern. This document, including, but not limited to, the text, drawings, designs and ideas shown herein and represented hereby, is an instrument of service, and as such is, and shall remain, the sole and exclusive property of LONI, INC. and shall not be modified in any manner or by any means except by its owner, LONI, INC. Use of this document, in whole or in part, is limited to one time, for the specific purpose of implementing the work represented hereon and for no publication, or distribution, or other use of this document shall be made without the prior express and written consent of LONI, INC.

- KEY NOTES:**
- 1 CORRUGATED METAL PANELS, COLOR: LIGHT GRAY
 - 2 CMU BASE WALL, 8"x8"x16", NATURAL GRAY SPLIT FACE
 - 3 48"H CONCRETE FILLED STEEL BOLLARD, PAINTED SAFETY YELLOW
 - 4 CORRUGATED METAL PANELS w/ TRANSLUCENT PANELS, SEE ROOF PLAN, COLOR: LIGHT GRAY
 - 5 STRUCTURAL COLUMN
 - 6 5'-0"H CONCRETE COLUMN BASE PROTECTION
 - 7 CONTINUOUS RIDGE VENT



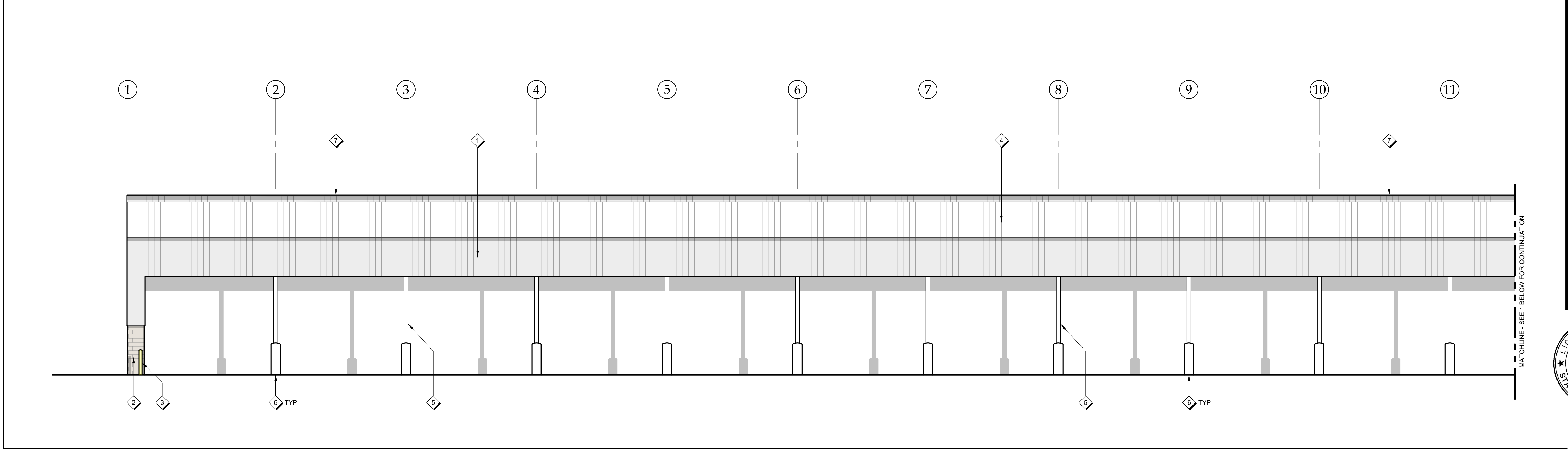
NORTH ELEVATION

1/8"=1'-0" 4



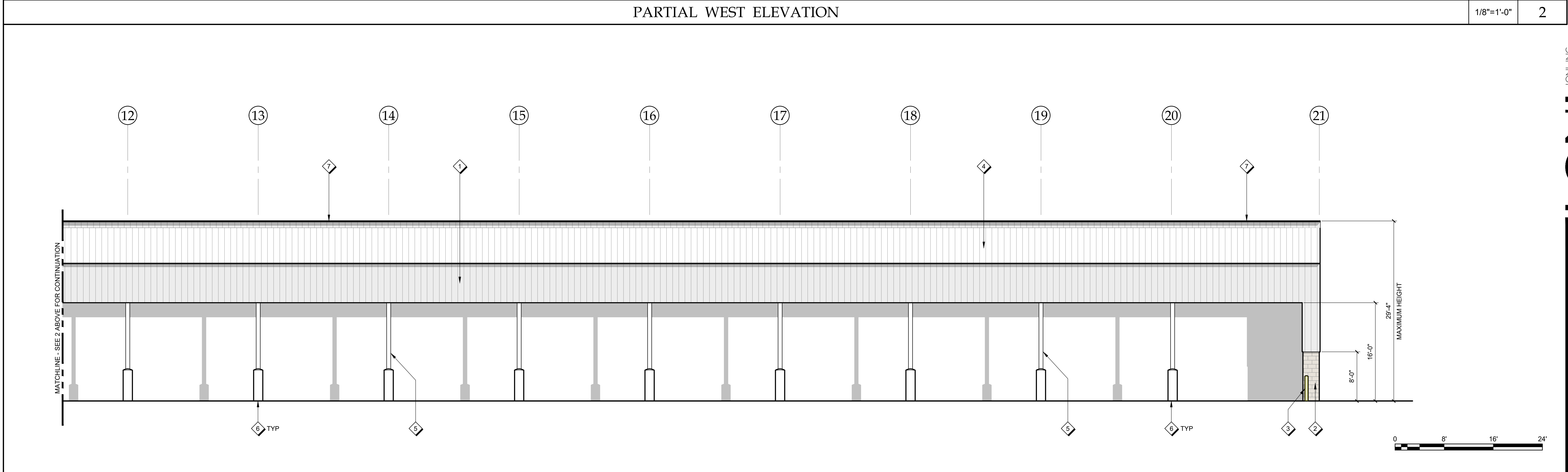
SOUTH ELEVATION

1/8"=1'-0" 3



PARTIAL WEST ELEVATION

1/8"=1'-0" 2



CANOPY STRUCTURE - PARTIAL WEST ELEVATION

1/8"=1'-0" 1

<p>ANGELUS BLOCK CO., INC. BRICKS, MANUFACTURING FACILITY APNS: 026-0-01-67-0000, 026-0-01-41-0000, 026-0-01-42-0000 RIALTO, CA 92316</p>	<p>LICENCED ARCHITECT FRANK J. LONI C-35616 REG. 7/21/2001 STATE OF CALIFORNIA</p>
<p>Drawn By: JEST Signed: 11/24/2020</p>	<p>Permit No.: Permit Date:</p>
<p>Sheet: A2.13 Job Number: 19-050</p>	<p>Revisions: Mark: _____ Date: _____ Revisions: _____ Date: _____</p>
<p>© 2020 by LONI, Inc.</p>	

