



City of Rialto

Street Light Maintenance District No. 1

Landscape Maintenance District No. 1

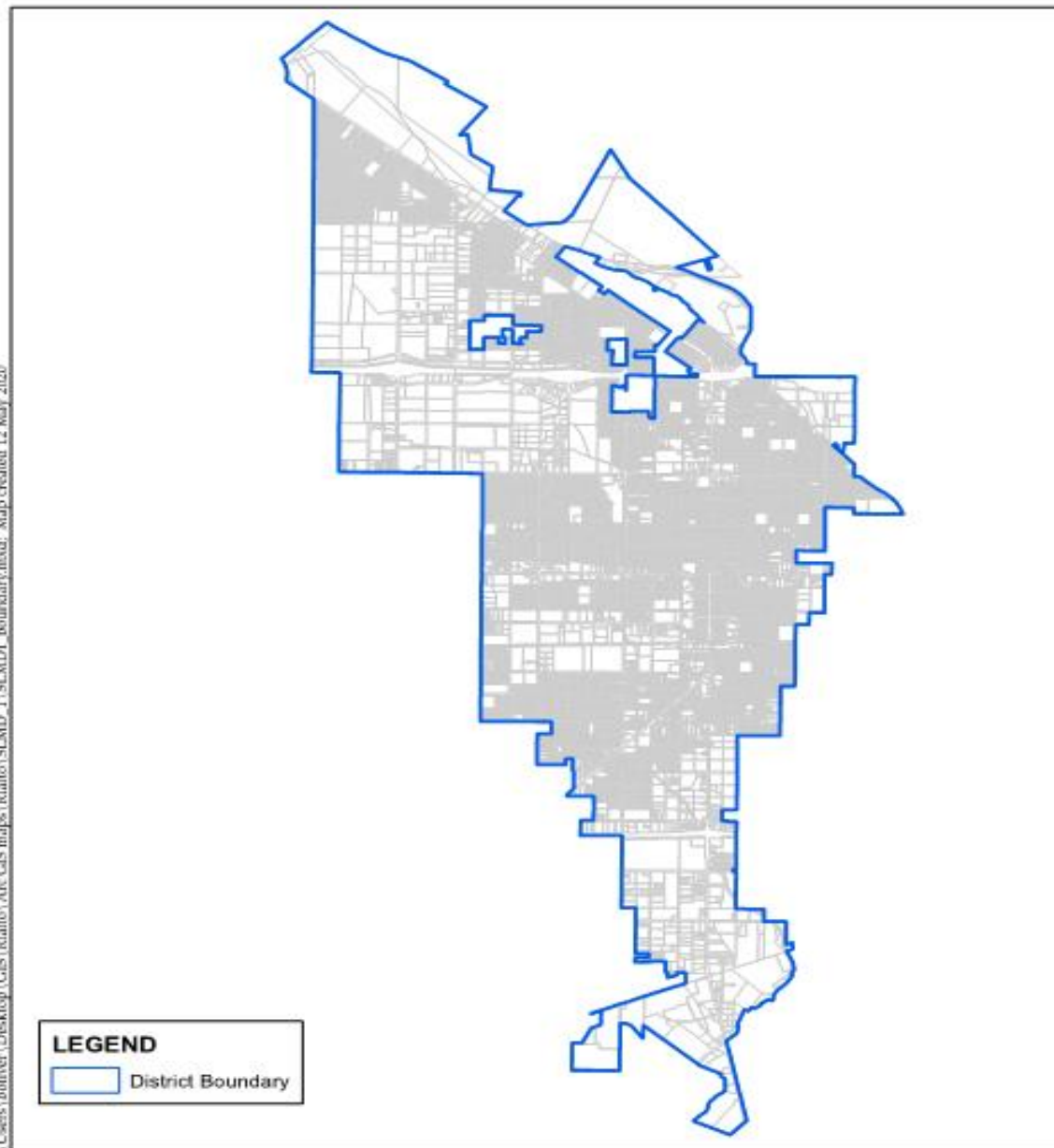
Landscaping & Lighting District No. 2



Street Light Maintenance District No. 1

STREET LIGHT MAINTENANCE DISTRICT NO. 1

C:\Users\boliver\Desktop\GIS\Rialto\ArcGIS maps\Rialto\SLMD1\SLMD1_boundary.mxd. Map created 12 May 2020



Source: San Bernardino Co. GIS, 2020

0 1 2 3
Miles



ALBERT A.
WEBB
ASSOCIATES

SLD 1 Rates (No change from prior year)

Land Use	Land Benefit Factor	Development Factor
Residential (Developed)	\$8.18 per Acre	\$24.03 per Unit
Residential (Undeveloped)	\$8.18 per Acre	\$0.00 per Unit
Non-Residential (Developed)	\$8.18 per Acre	\$52.09 per Parcel
Non-Residential (Undeveloped)	\$8.18 per Acre	\$0.00 per Parcel

SLD 1 Budget Summary

Total Expenses	\$1,400,684
Contributions	
District (Amount to Levy)	\$872,162
Reserve Fund Contribution	\$0
Deficit Covered by General Fund	\$528,522
Total Contributions	\$1,400,684

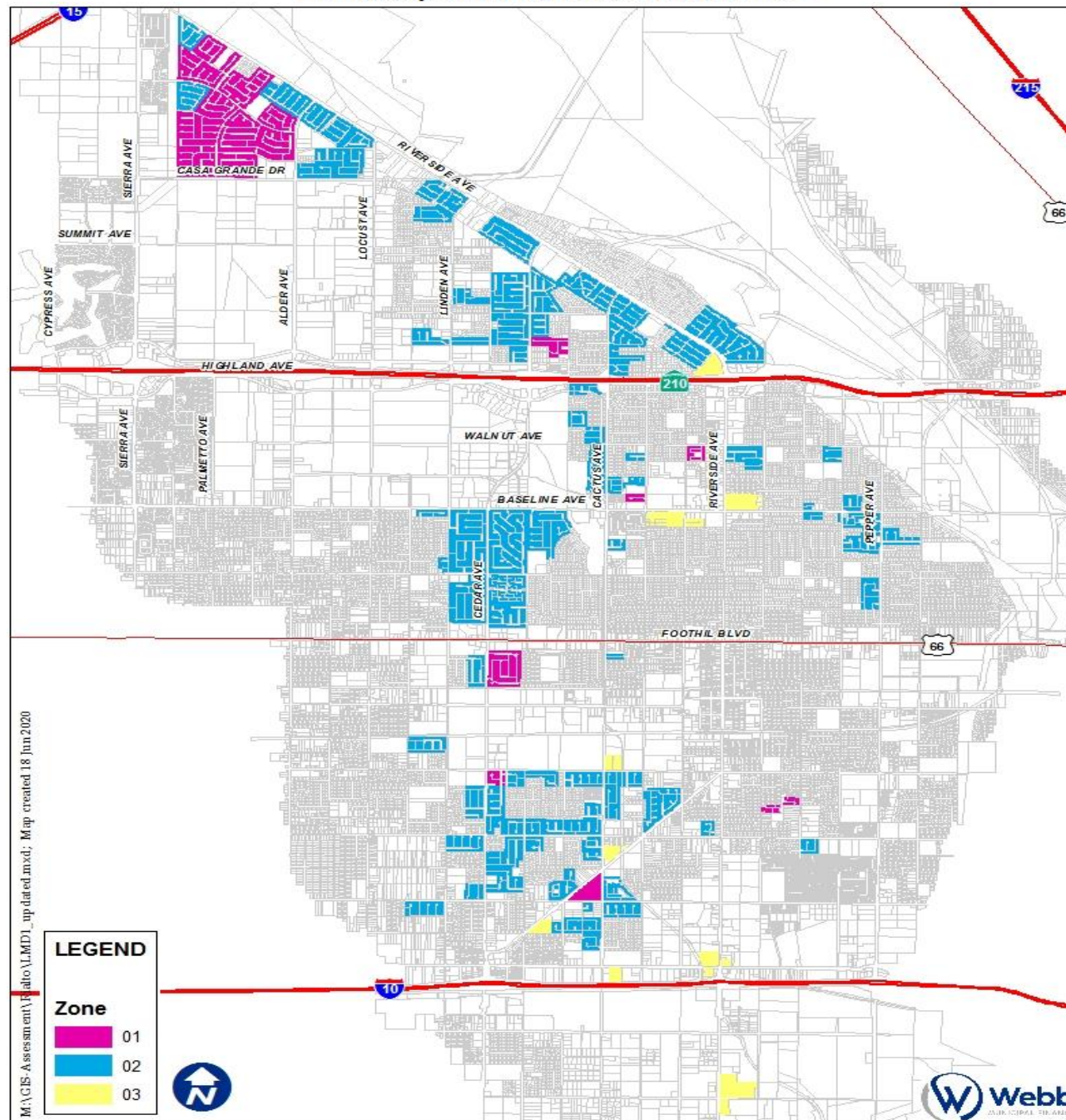
Landscape Maintenance District No. 1

Zone 1 Residential
No Trees

Zone 2 Residential
With Trees

Zone 3 Non-
residential,
Multi-family

Landscape Maintenance District No. 1

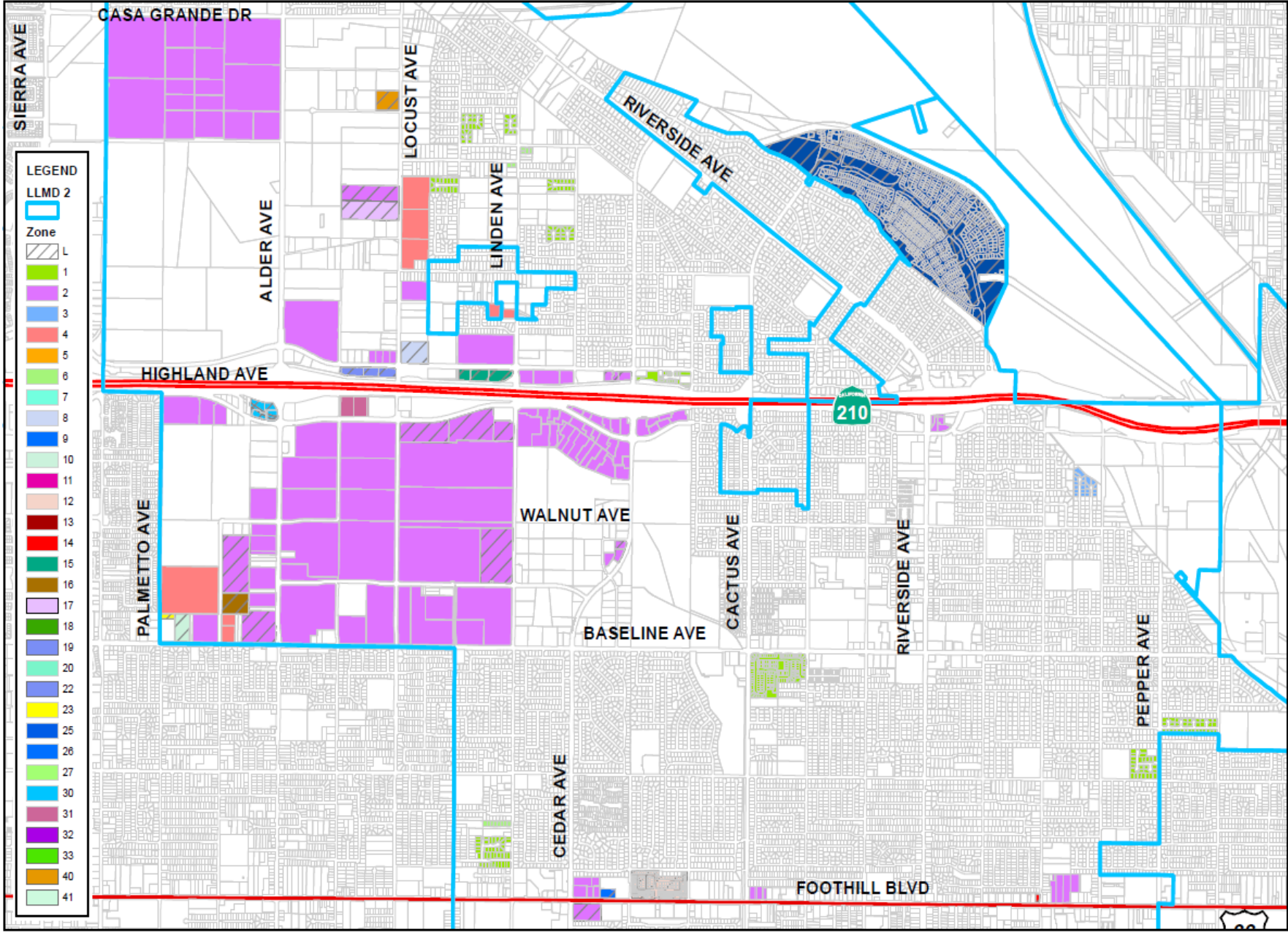


LMD 1 Budget Summary

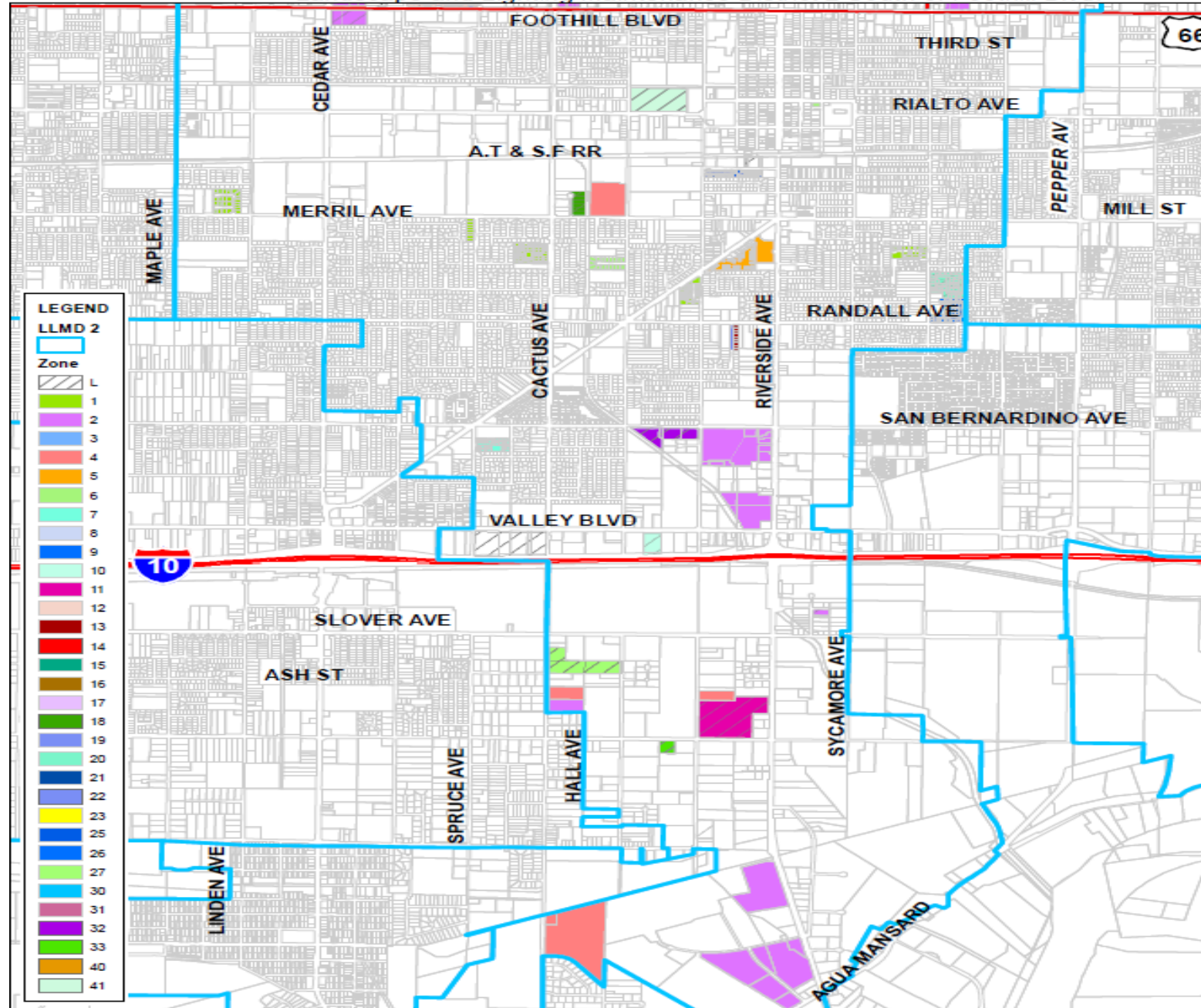
	Zone 1	Zone 2	Zone 3	Total
Expenses				
Costs & Expenses	\$100,569	\$356,617	\$457,186	\$914,373
Reserve Fund Collection	\$3,970	\$14,136	\$0	\$0
Contributions				
District (Amount to Levy)	\$104,539	\$370,753	\$66,288	\$541,581
Reserve Fund Contribution	\$0	\$0	\$390,898	\$390,898
Total Contributions	\$104,539	\$370,753	\$457,186	\$914,373
Deficit	\$0	\$0	\$0	\$0
Total EBUs	1,802.40	6,392.30	2,929.52	
Rate Per EBU	\$58.00	\$58.00	\$2.58 - \$2,666.67	

Landscaping and Lighting District No. 2

Landscape and Lighting Maintenance District 2 North of Foothill Blvd.



Landscape and Lighting Maintenance District 2 South of Foothill Blvd.



LLMD 2 Budget Summary

	Lighting Zone L	Landscaping Zones	Total
Expenses			
Costs & Expenses	\$19,898	\$1,060,809	\$1,080,707
Reserve Fund Collection	\$6,070	\$180,292	\$183,362
Contributions			
General Benefit	\$16,752	\$0	\$16,752
District (Amount to Levy)	\$9,217	\$1,241,101	\$1,250,318
Reserve Fund Contribution	\$0	\$0	\$0
Total Contributions	\$22,821	\$1,241,101	\$1,263,922
Deficit	\$0	\$0	\$0
Total EBUs	679.72	1,044,313.04	
Rate Per EBU	\$6.45 - \$30.81	\$0.60 - \$567.92	

Implemented Strategies

- Use of In-House Staff
- Reassess Contracts - Landscape, Tree Trimming, Streetlight Maintenance
- New and Existing Developments - Landscape Maintenance Specifications
- Conditional Assessment of Irrigation Systems
- Utilities Consumption Audit
- Deficiency Notices

Next Steps

- Hold Public Hearing
- Adopt Resolutions authorizing the levy of the assessments maintaining the rates for Fiscal Year 2025/26 in SLD 1, LMD 1 and LLMD 2

Questions?