

KEYNOTES

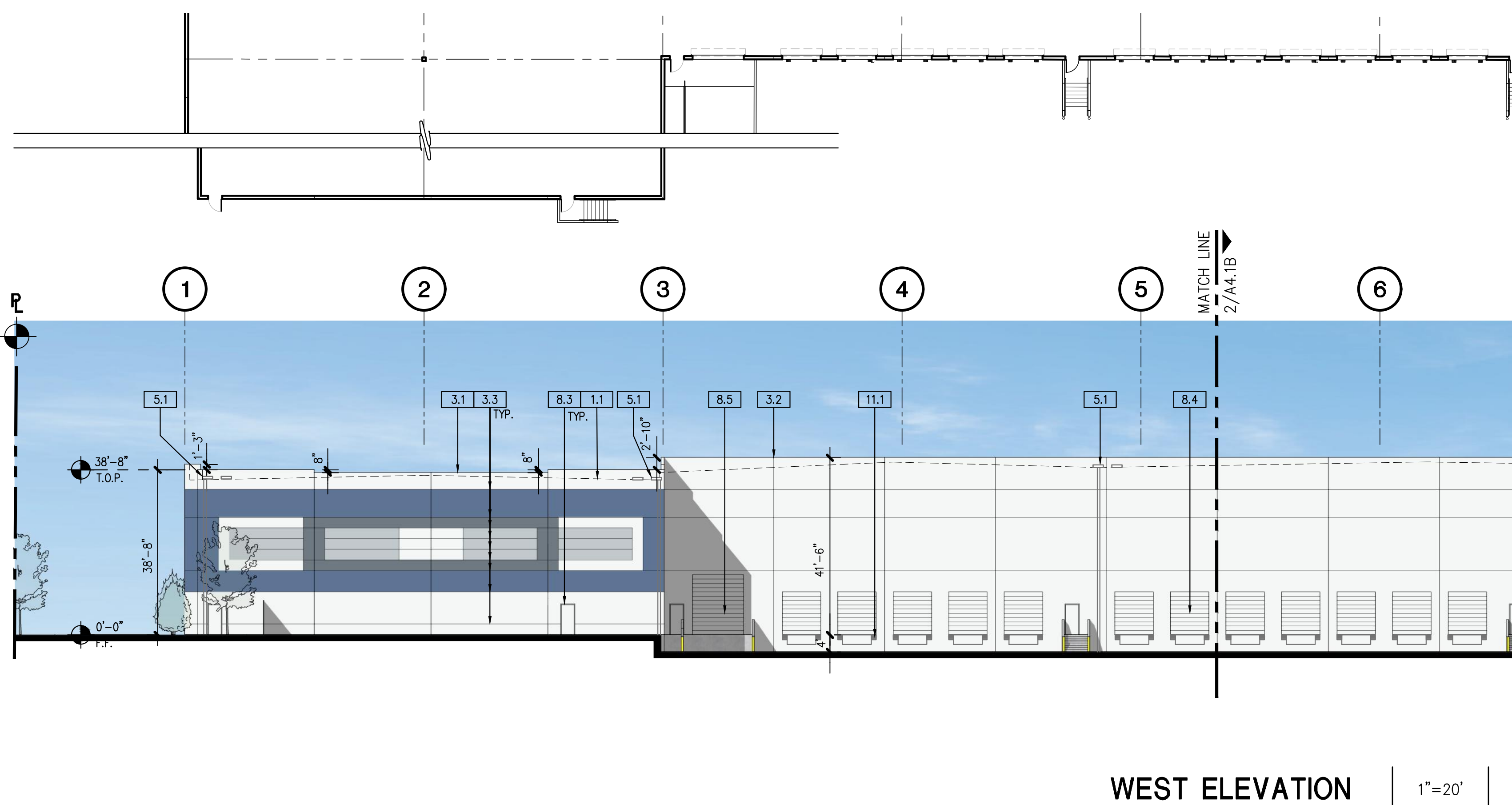
- 1.0 GENERAL
 - 1.1 LINE OF ROOF BEYOND
- 3.0 CONCRETE
 - 3.1 TILT-UP CONCRETE WALL PANEL (PAINTED, ALL EXTERIOR SURFACES)
 - 3.2 PANEL JOINT
 - 3.3 PANEL REVEAL, REVEAL COLOR TO MATCH ADJACENT FIELD COLOR.
 - 3.4 CONCRETE STAIRS W/ HANDRAIL & 42" HIGH GUARDRAIL
 - 3.5 TILT-UP CONCRETE SCREEN WALL
- 5.0 METALS
 - 5.1 EXTERIOR METAL DOWNSPOUT WITH ROOF AND OVERFLOW SCUPPER, ROOF DRAIN TO MANIFOLD TO STORM DRAIN, PAINTED TO MATCH ADJACENT WALL
 - 5.2 METAL CANOPY
 - 5.3 SECURITY FENCE AND GATE
- 8.0 OPENINGS
 - 8.1 EXTRUDED ALUMINUM AND GLASS STOREFRONT, DUAL GLAZE
 - 8.2 ALUMINUM AND GLASS ENTRY DOOR - REFER TO DOOR SCHEDULE
 - 8.3 HOLLOW METAL MAN DOOR, PAINTED
 - 8.4 9'W x 10'H OVERHEAD SECTIONAL DOCK DOOR, PAINTED
 - 8.5 12'W x 14'H OVERHEAD SECTIONAL GRADE DOOR, PAINTED
- 10.0 SPECIALTIES
 - 10.1 STREET ADDRESS - SIZE AS REQUIRED BY GOVERNING AGENCY BUT NOT LESS THAN 12"
 - 10.2 BUILDING/ TENANT SIGNAGE (N.I.C.)
- 11.0 EQUIPMENT
 - 11.1 DOCK BUMPERS - COORDINATE W/ MFR & STRUCTURAL DRAWINGS. SIZE AS NEEDED TO PREVENT TOP OF TRAILER FROM STRIKING BUILDING WALL.
- 22.0 PLUMBING
 - 22.1 ROOF DRAIN W/ OVERFLOW SCUPPER
 - 22.2 INTERNAL ROOF DRAIN W/ OVERFLOW DRAIN

GENERAL NOTES

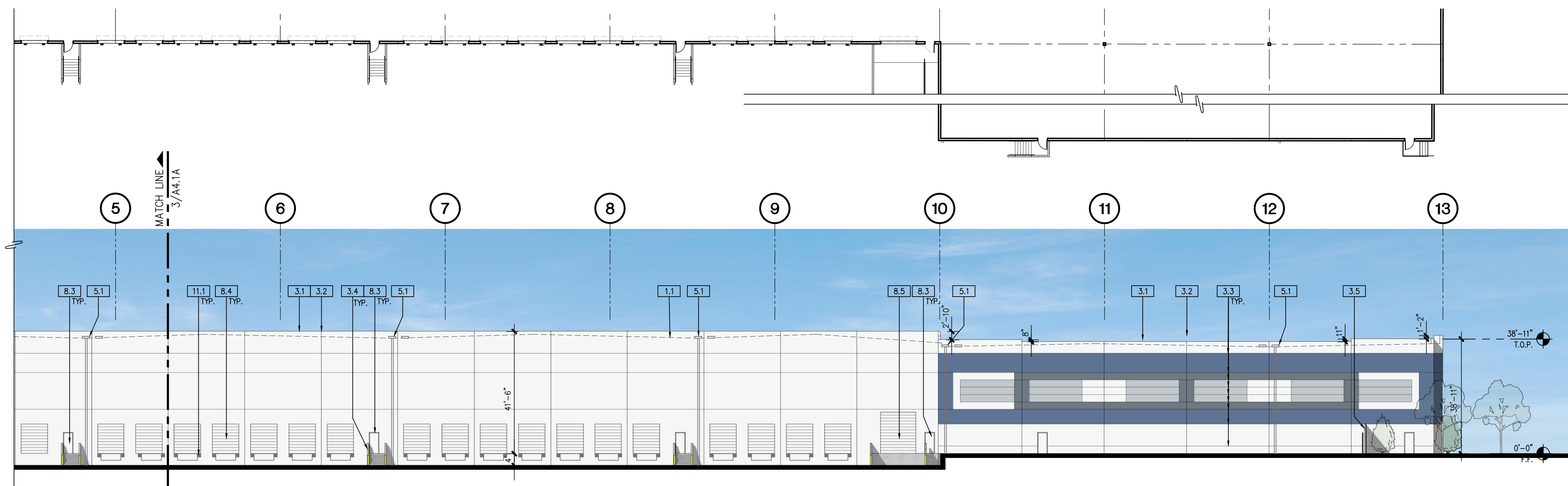
- 1. MECHANICAL ROOF EQUIPMENT TO BE SCREENED FROM VIEW.
- 2. ALL PAINT COLOR CHANGES TO OCCUR AT INSIDE CORNERS AND REVEAL LINES UNLESS NOTED OTHERWISE. REVEAL COLOR TO MATCH THE ADJACENT FIELD COLOR.
- 3. PROVIDE 8"-0" WIDE COLOR SAMPLE ON BUILDING, FULL HEIGHT FROM BASE TO PARAPET FOR APPROVAL BY ARCHITECT AND OWNER PRIOR TO PAINTING.
- 4. ALL PAINT, STAIN, SANDBLAST, ETC. FINISHES AND JOINTS/REVEALS SHOWN IN ELEVATION VIEW SHALL RETURN TO THE NEAREST INSIDE CORNER OR INTO WINDOW JAMS.
- 5. ALL WALL PAINT FINISHES ARE TO BE FLAT, METAL PAINT TO BE SEMI-GLOSS UNLESS NOTED OTHERWISE.
- 6. BACK SIDE OF PARAPETS TO HAVE SMOOTH FINISH AND BE PAINTED WITH ELASTOMERIC PAINT.
- 7. T.O.P. = TOP OF PARAPET ELEVATION
- 8. F.F. = FINISH FLOOR ELEVATION
- 9. MEZZ = MEZZANINE FLOOR ELEVATION
- 10. STOREFRONT CONSTRUCTION: GLASS, METAL ATTACHMENTS, AND LINTELS SHALL BE DESIGNED TO RESIST 90 MPH EXPOSURE "C" WINDS. CONTRACTOR SHALL SUBMIT SHOP DRAWINGS PRIOR TO INSTALLATION.

COLOR SCHEDULE / MATERIALS

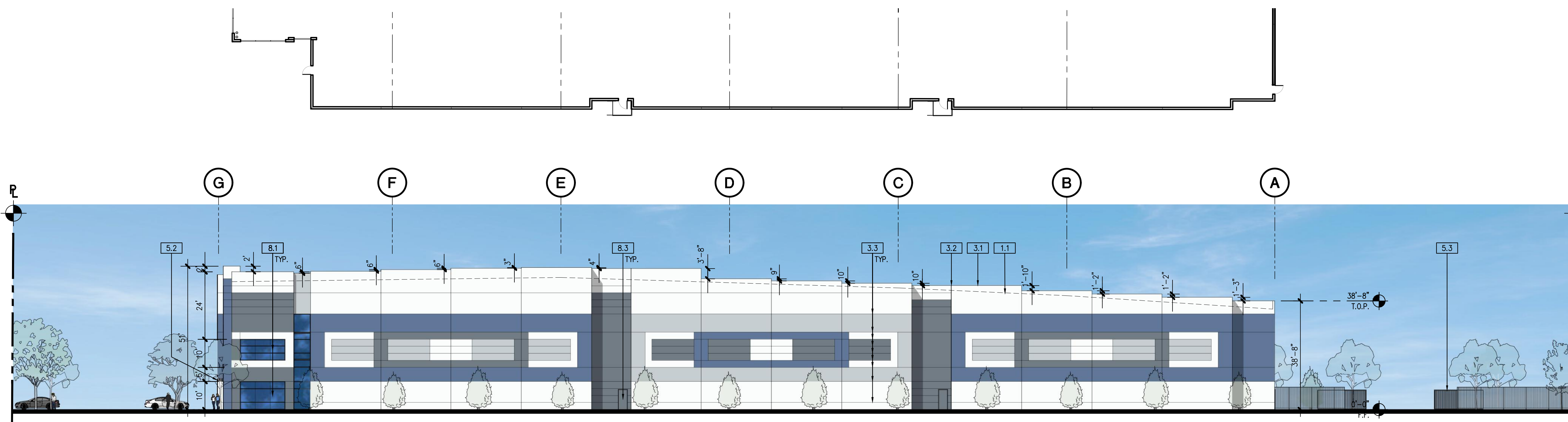
- G1 GLAZING MEDIUM PERFORMANCE
COLOR: BLUE
 - M1 CANOPY COLOR: BLUE
METAL
 - M2 MULLIONS ALUMINUM
FINISH: DARK (BLACK OR SIMILAR)
 - P1 PAINT 1 SHERWIN WILLIAMS "OLYMPUS WHITE" SW6253 OR SIMILAR
MAIN BUILDING COLOR - LIGHT GRAY/WHITE
 - P2 PAINT 2 SHERWIN WILLIAMS "MORNING FOG" SW6255 OR SIMILAR
MEDIUM BUILDING COLOR - MEDIUM GRAY
 - P3 PAINT 3 SHERWIN WILLIAMS "GILBRALTAR" SW6257 OR SIMILAR
OFFICE AND DARK BUILDING COLOR - DARK GRAY
 - P4 PAINT 4 SHERWIN WILLIAMS "LUXE BLUE" SW6537 OR SIMILAR
MAIN ENTRY & ACCENT COLOR - ACCENT COLOR
- DOORS TO MATCH ADJACENT BUILDING COLOR



WEST ELEVATION | 1"=20' | 3



WEST ELEVATION | 1"=20' | 2



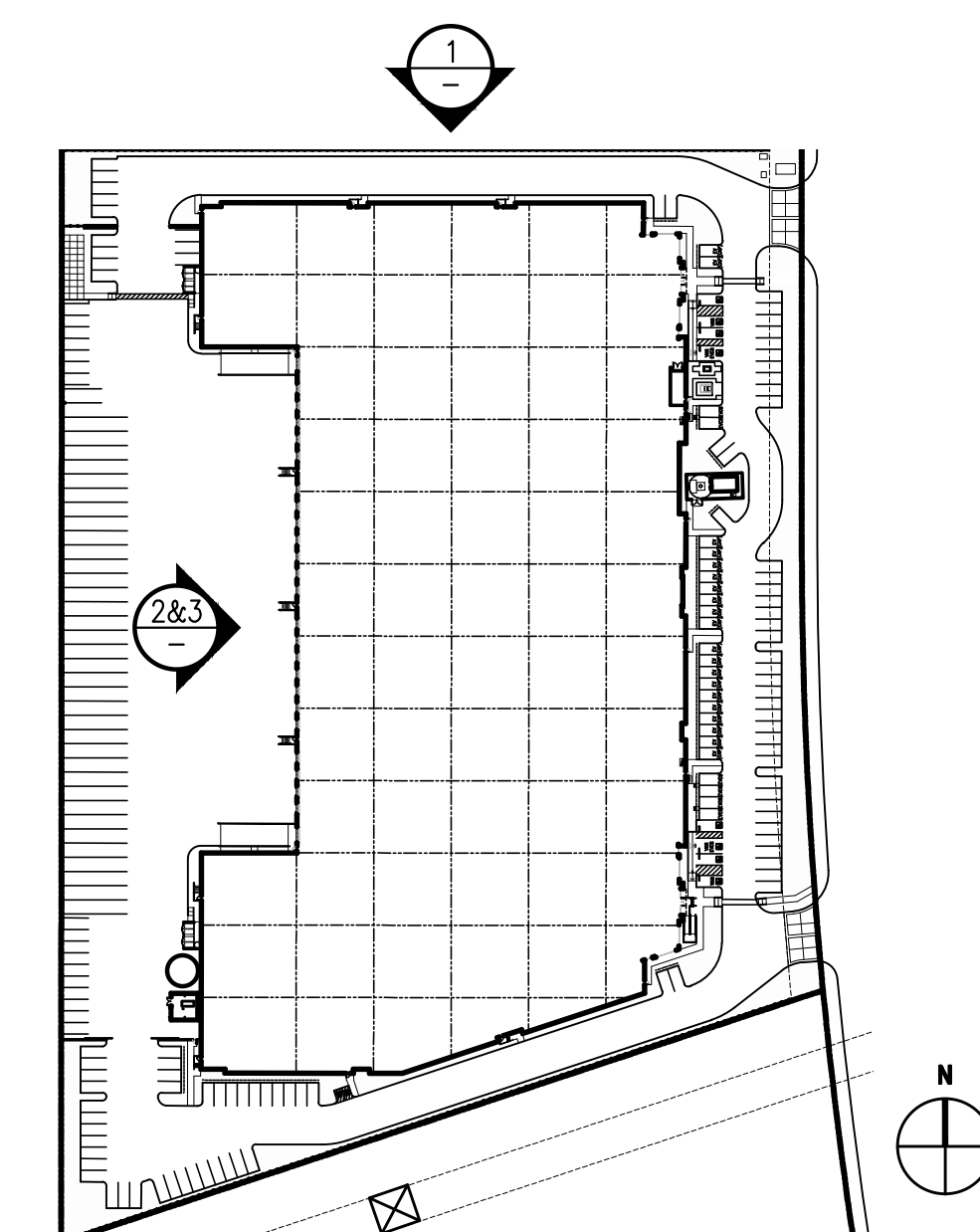
NORTH ELEVATION | 1"=20' | 1



BUILDING AERIAL | 6



ENTRY PERSPECTIVE | 5



KEYMAP | NTS | 4

NO.	DESCRIPTION	DATE
△ 1	1ST SUBMITTAL	10/14/22
△ 2	2ND SUBMITTAL	1/9/23
△ 3	3RD SUBMITTAL	8/30/23

ELEVATIONS

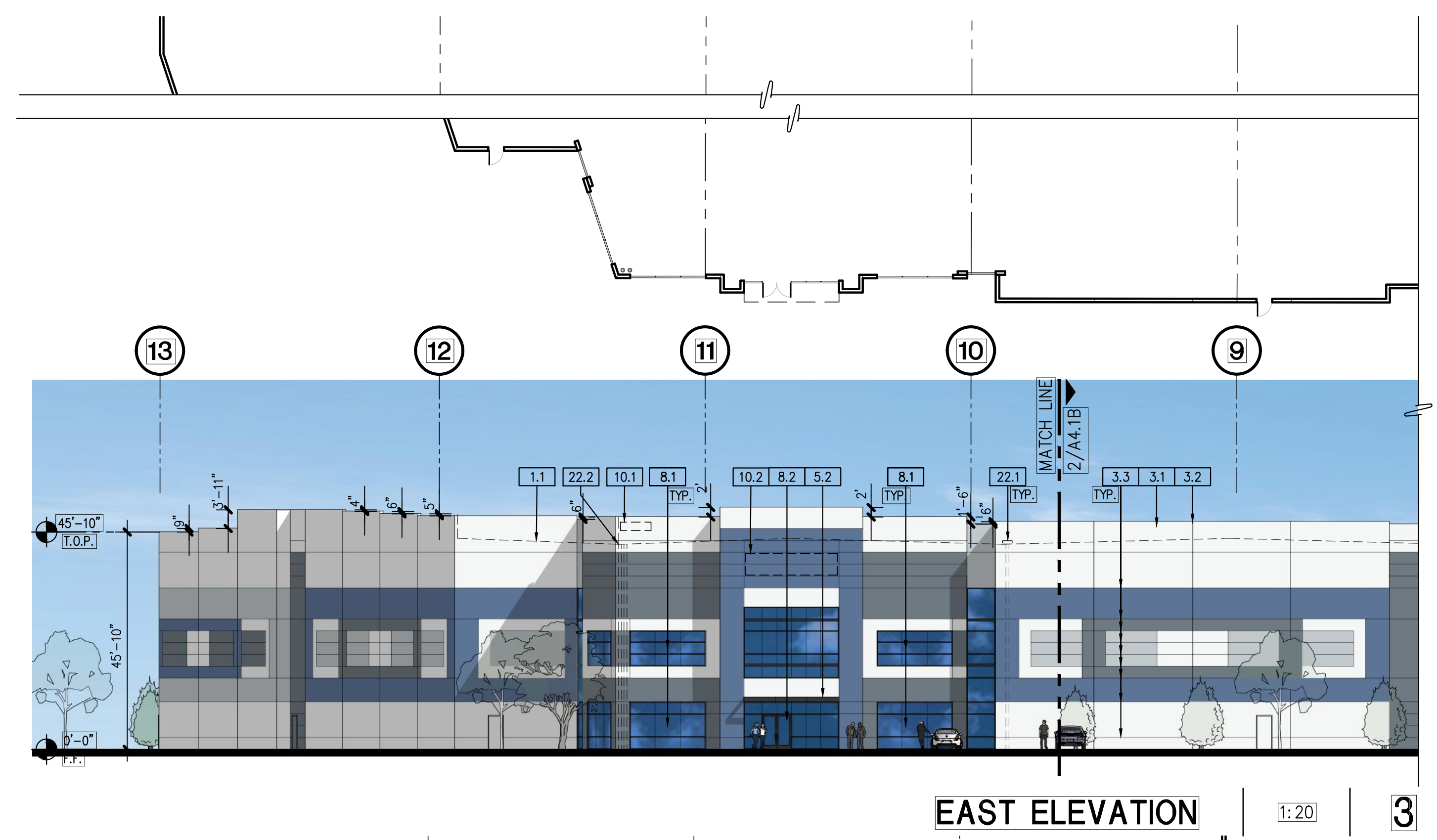
ALL DRAWINGS AND WRITTEN MATERIAL APPEARING HEREIN CONSTITUTE THE ORIGINAL AND UNPUBLISHED WORK OF THE ARCHITECT AND THE SAME MAY NOT BE REPRODUCED, USED OR DISCLOSED WITHOUT THE EXPRESS WRITTEN CONSENT OF THE ARCHITECT.
© GAA ARCHITECTS. ALL RIGHTS RESERVED.

JOB NO.	XRP051.01	SHEET NO.	A4.1A
DATE	9/20/22		
DRAWN	GAA		
FILE NAME	XRP050_4.1A		

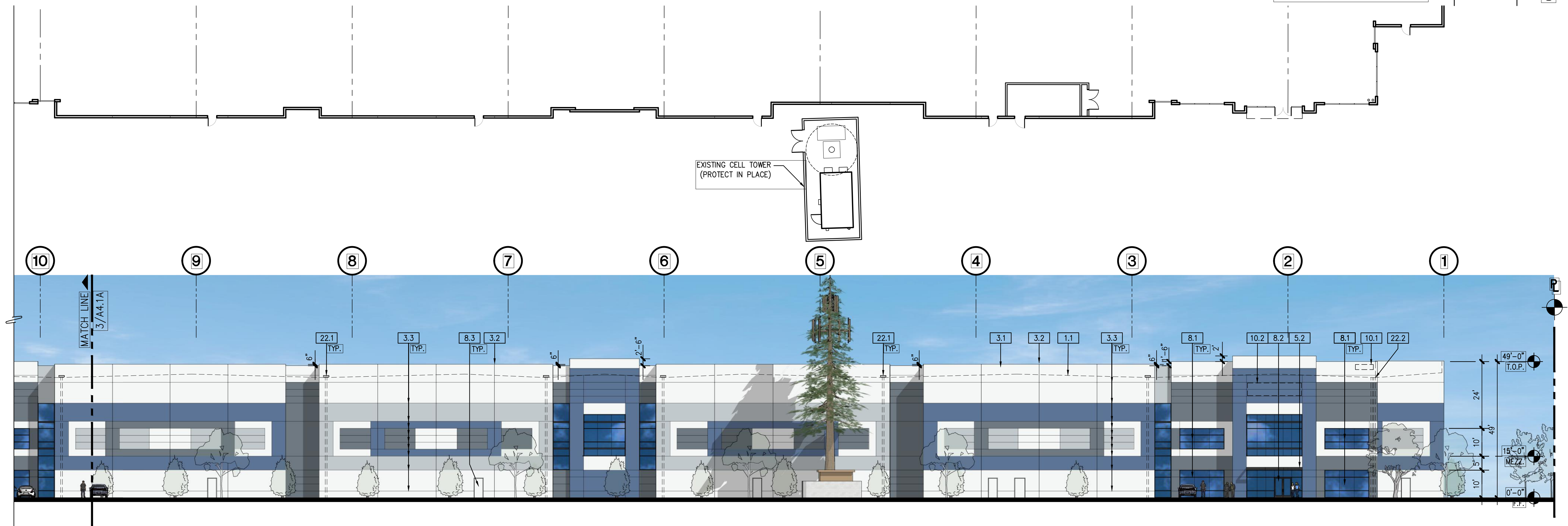
- ### KEYNOTES
- 1.0 GENERAL
 - 1.1 LINE OF ROOF BEYOND
 - 3.0 CONCRETE
 - 3.1 TILT-UP CONCRETE WALL PANEL (PAINTED, ALL EXTERIOR SURFACES)
 - 3.2 PANEL JOINT
 - 3.3 PANEL REVEAL, REVEAL COLOR TO MATCH ADJACENT FIELD COLOR.
 - 3.4 CONCRETE STAIRS W/ HANDRAIL & 42" HIGH GUARDRAIL
 - 3.5 TILT-UP CONCRETE SCREEN WALL
 - 5.0 METALS
 - 5.1 EXTERIOR METAL DOWNSPOUT WITH ROOF AND OVERFLOW SCUPPER. ROOF DRAIN TO MANIFOLD TO STORM DRAIN, PAINTED TO MATCH ADJACENT WALL
 - 5.2 METAL CANOPY
 - 5.3 SECURITY FENCE AND GATE
 - 8.0 OPENINGS
 - 8.1 EXTRUDED ALUMINUM AND GLASS STOREFRONT, DUAL GLAZE
 - 8.2 ALUMINUM AND GLASS ENTRY DOOR - REFER TO DOOR SCHEDULE
 - 8.3 HOLLOW METAL MAN DOOR, PAINTED
 - 8.4 9'W x 10'H OVERHEAD SECTIONAL DOCK DOOR, PAINTED
 - 8.5 12'W x 14'H OVERHEAD SECTIONAL GRADE DOOR, PAINTED
 - 10.0 SPECIALTIES
 - 10.1 STREET ADDRESS - SIZE AS REQUIRED BY GOVERNING AGENCY BUT NOT LESS THAN 12"
 - 10.2 BUILDING/ TENANT SIGNAGE (N.I.C.)
 - 11.0 EQUIPMENT
 - 11.1 DOCK BUMPERS - COORDINATE W/ MFR & STRUCTURAL DRAWINGS. SIZE AS NEEDED TO PREVENT TOP OF TRAILER FROM STRIKING BUILDING WALL.
 - 22.0 PLUMBING
 - 22.1 ROOF DRAIN W/ OVERFLOW SCUPPER
 - 22.2 INTERNAL ROOF DRAIN W/ OVERFLOW DRAIN

- ### GENERAL NOTES
1. MECHANICAL ROOF EQUIPMENT TO BE SCREENED FROM VIEW.
 2. ALL PAINT COLOR CHANGES TO OCCUR AT INSIDE CORNERS AND REVEAL LINES UNLESS NOTED OTHERWISE. REVEAL COLOR TO MATCH THE ADJACENT FIELD COLOR.
 3. PROVIDE 8"-0" WIDE COLOR SAMPLE ON BUILDING, FULL HEIGHT FROM BASE TO PARAPET FOR APPROVAL BY ARCHITECT AND OWNER PRIOR TO PAINTING.
 4. ALL PAINT, STAIN, SANDBLAST, ETC. FINISHES AND JOINTS/REVEALS SHOWN IN ELEVATION VIEW SHALL RETURN TO THE NEAREST INSIDE CORNER OR INTO WINDOW JAMBS.
 5. ALL WALL PAINT FINISHES ARE TO BE FLAT, METAL PAINT TO BE SEMI-GLOSS UNLESS NOTED OTHERWISE.
 6. BACK SIDE OF PARAPETS TO HAVE SMOOTH FINISH AND BE PAINTED WITH ELASTOMERIC PAINT.
 7. T.O.P. = TOP OF PARAPET ELEVATION
 8. F.F. = FINISH FLOOR ELEVATION
 9. MEZZ = MEZZANINE FLOOR ELEVATION
 10. STOREFRONT CONSTRUCTION: GLASS, METAL ATTACHMENTS, AND LINTELS SHALL BE DESIGNED TO RESIST 90 MPH EXPOSURE "C" WINDS. CONTRACTOR SHALL SUBMIT SHOP DRAWINGS PRIOR TO INSTALLATION.

- ### COLOR SCHEDULE / MATERIALS
- | | |
|-------------|---|
| G1 GLAZING | MEDIUM PERFORMANCE
COLOR: BLUE
METAL |
| M1 CANOPY | FINISH: DARK (BLACK OR SIMILAR) |
| M2 MULLIONS | ALUMINUM
FINISH: DARK (BLACK OR SIMILAR) |
| P1 PAINT 1 | SHERWIN WILLIAMS "OLYMPUS WHITE" SW6253 OR SIMILAR
MAIN BUILDING COLOR - LIGHT GRAY/WHITE |
| P2 PAINT 2 | SHERWIN WILLIAMS "MORNING FOG" SW6255 OR SIMILAR
MEDIUM BUILDING COLOR - MEDIUM GRAY |
| P3 PAINT 3 | SHERWIN WILLIAMS "GILBRALTAR" SW6257 OR SIMILAR
OFFICE AND DARK BUILDING COLOR - DARK GRAY |
| P4 PAINT 4 | SHERWIN WILLIAMS "LUXE BLUE" SW6537 OR SIMILAR
MAIN ENTRY & ACCENT COLOR - ACCENT COLOR |
- DOORS TO MATCH ADJACENT BUILDING COLOR



EAST ELEVATION | 1:20 | 3



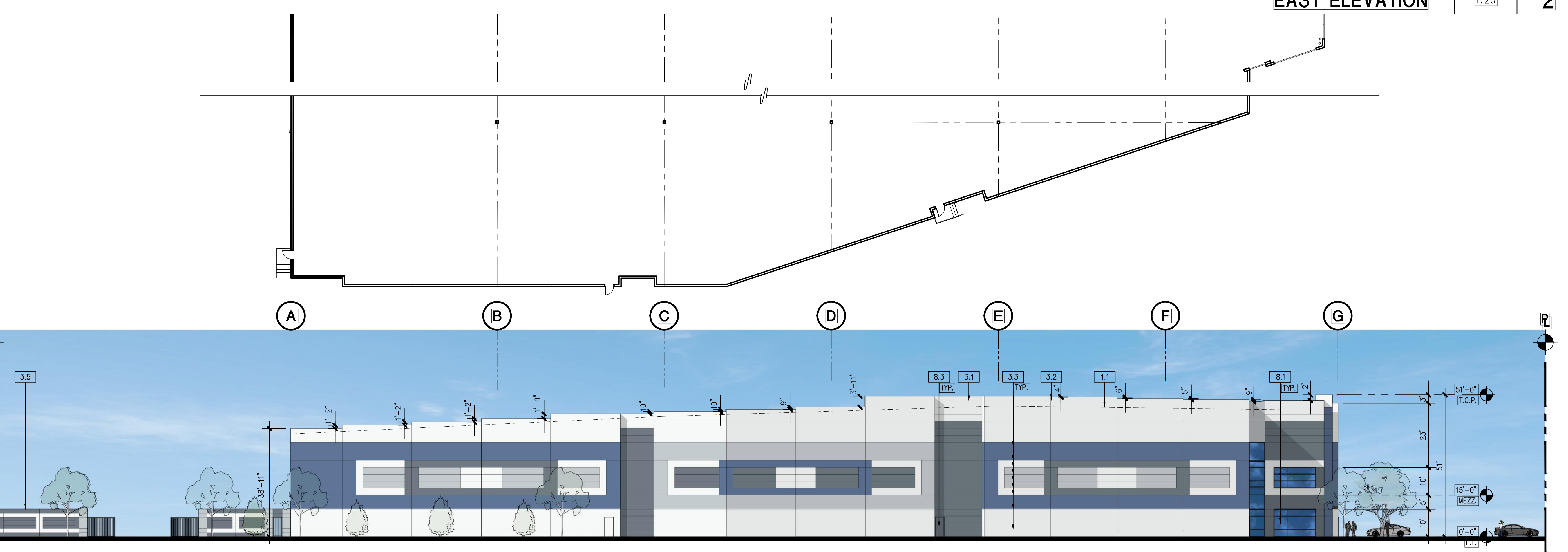
EAST ELEVATION | 1:20 | 2



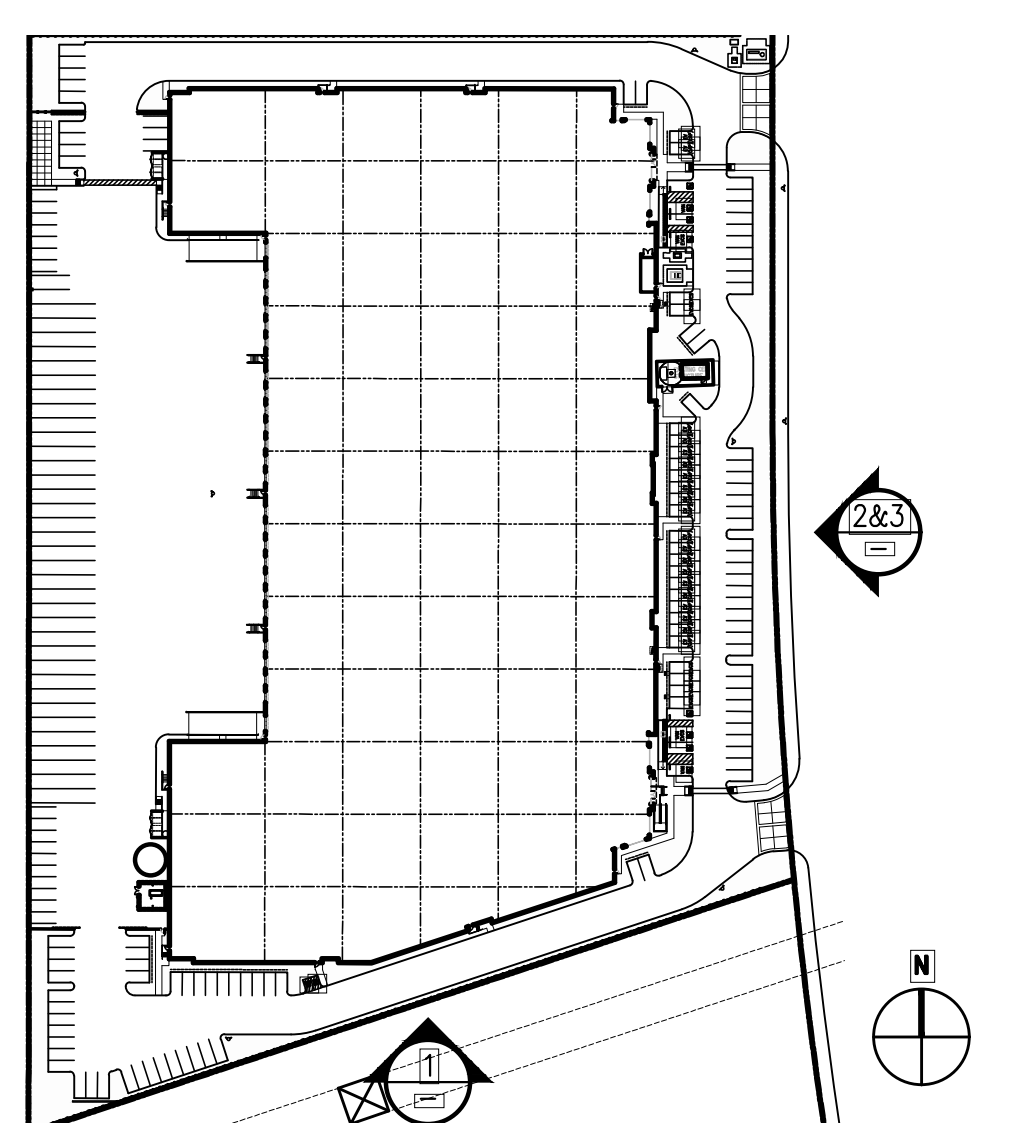
BUILDING AERIAL | 6



ENTRY PERSPECTIVE | 5



SOUTH ELEVATION | 1:20 | 1



KEYMAP | NTS | 4

NO.	DESCRIPTION	DATE
△ 1	1ST SUBMITTAL	10/14/22
△ 2	2ND SUBMITTAL	1/9/23
△ 3	3RD SUBMITTAL	8/30/23

ELEVATIONS

ALL DRAWINGS AND WRITTEN MATERIAL APPEARING HEREIN CONSTITUTE THE ORIGINAL AND UNPUBLISHED WORK OF THE ARCHITECT AND THE SAME MAY NOT BE REPRODUCED, USED OR DISCLOSED WITHOUT THE EXPRESS WRITTEN CONSENT OF THE ARCHITECT.
(© GAA ARCHITECTS. ALL RIGHTS RESERVED.)

JOB NO:	XRPO51.01	SHEET NO:	A4.1B
DATE:	9/20/22		
DRAWN:	GAA		
FILE NAME:	XRPO50_4.1B		



EAST ELEVATION | 1"=20' | 6



EAST ELEVATION | 1"=20' | 5



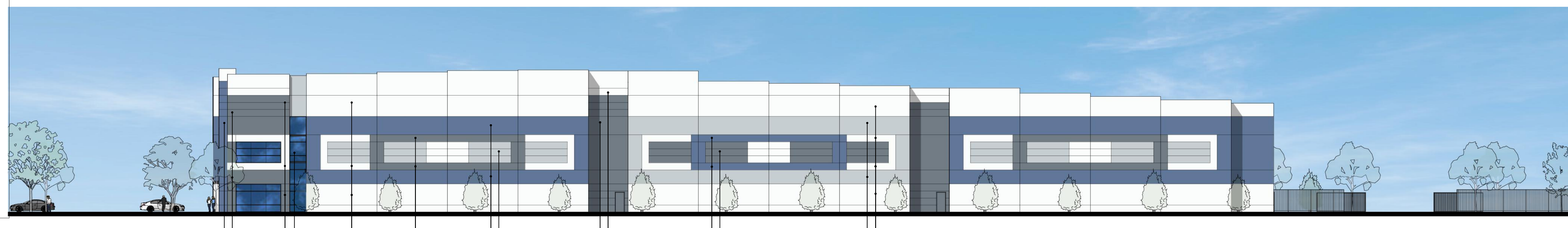
SOUTH ELEVATION | 1"=20' | 4



WEST ELEVATION | 1"=20' | 3



WEST ELEVATION | 1"=20' | 2



NORTH ELEVATION | 1"=20' | 1

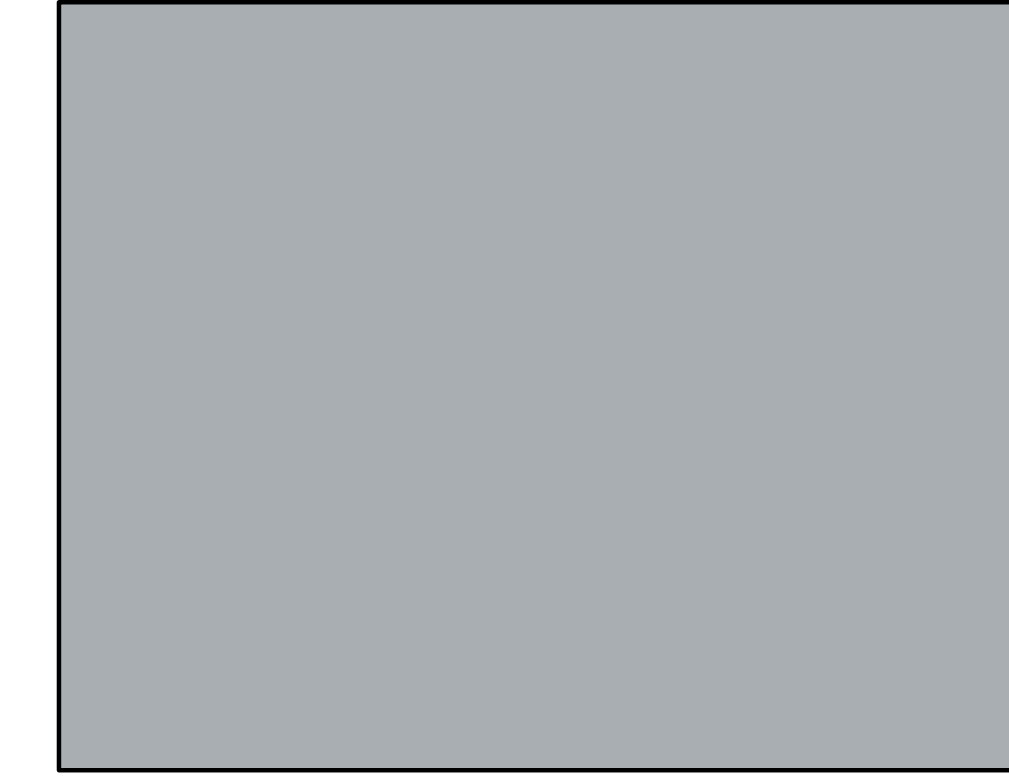
COLOR SCHEDULE / MATERIALS

G1 GLAZING	MEDIUM PERFORMANCE
M1 CANOPY	COLOR: BLUE
M2 MULLIONS	METAL
	FINISH: DARK (BLACK OR SIMILAR)
P1 PAINT 1	FINISH: DARK (BLACK OR SIMILAR)
	SHERWIN WILLIAMS "OLYMPUS WHITE" SW6253 OR SIMILAR
P2 PAINT 2	MAIN BUILDING COLOR - LIGHT GRAY/WHITE
	SHERWIN WILLIAMS "MORNING FOG" SW6255 OR SIMILAR
P3 PAINT 3	MEDIUM BUILDING COLOR COLOR - MEDIUM GRAY
	SHERWIN WILLIAMS "GILBRALTAR" SW6257 OR SIMILAR
P4 PAINT 4	OFFICE AND DARK BUILDING COLOR - DARK GRAY
	SHERWIN WILLIAMS "LUXE BLUE" SW6537 OR SIMILAR
	MAIN ENTRY & ACCENT COLOR - ACCENT COLOR

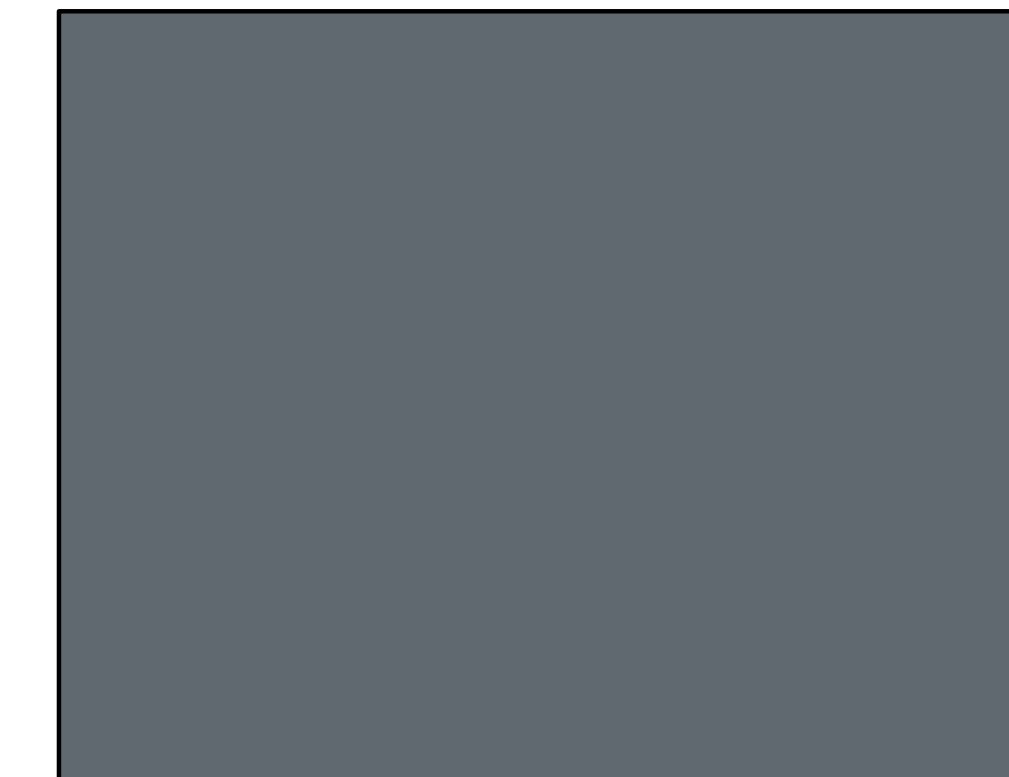
DOORS TO MATCH ADJACENT BUILDING COLOR



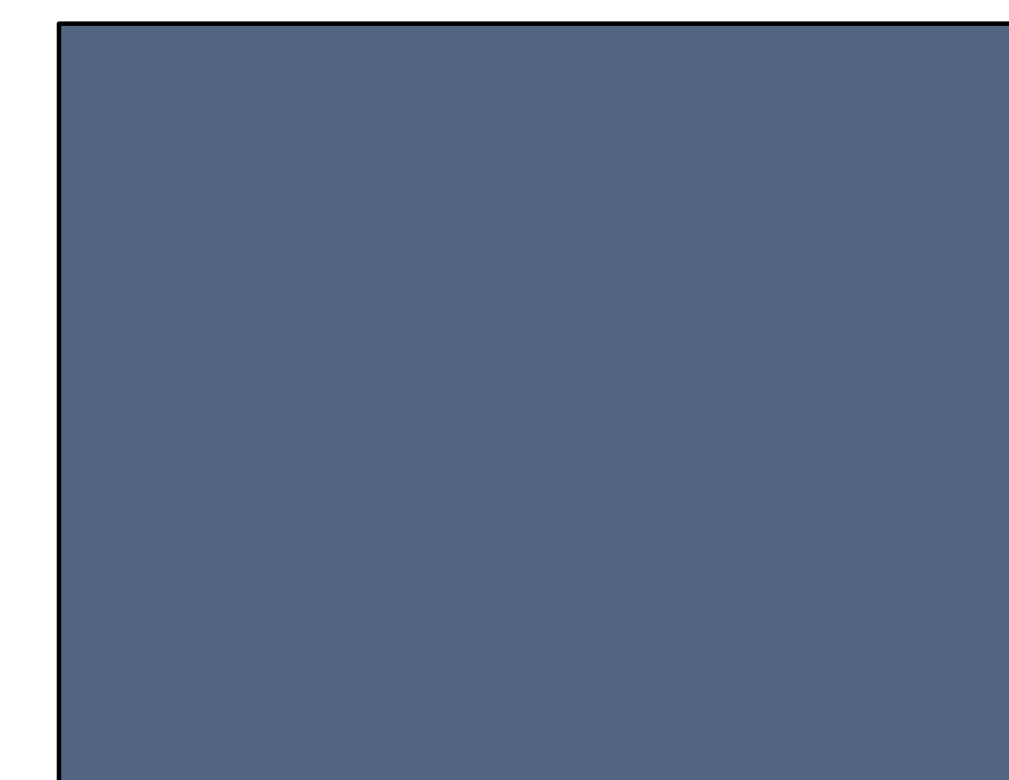
P1 (PAINT - SEE MATERIALS SCHEDULE)



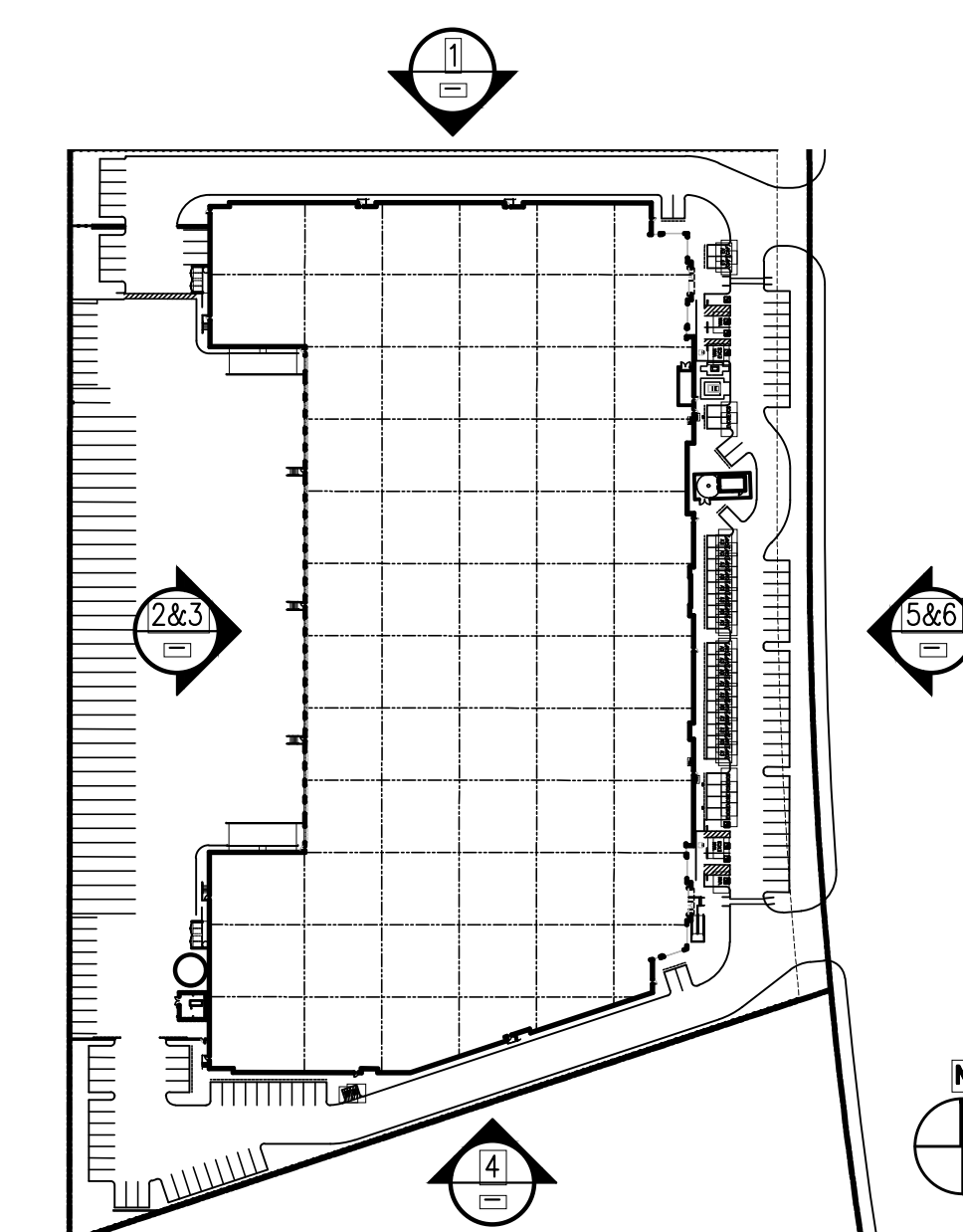
P2 (PAINT - SEE MATERIALS SCHEDULE)



P3 (PAINT - SEE MATERIALS SCHEDULE)



P4 (PAINT - SEE MATERIALS SCHEDULE)



KEYMAP | NTS | 7

G|A|A
ARCHITECTS

8811 Research Drive,
Suite 200,
Irvine, CA 92618
T: 949 474 1775
F: 949 553 9133

2830 S. RIVERSIDE AVENUE
INDUSTRIAL BUILDING

2830 SOUTH RIVERSIDE AVENUE
BLOOMINGTON, CA 92316

DEVELOPED FOR:
XEBEC REALTY

NO.	DESCRIPTION	DATE
△ 1	1ST SUBMITTAL	10/14/22
△ 2	2ND SUBMITTAL	1/9/23
△ 3	3RD SUBMITTAL	8/30/23

COLORED ELEVATIONS

ALL DRAWINGS AND WRITTEN MATERIAL APPEARING HEREIN CONSTITUTE THE ORIGINAL AND UNPUBLISHED WORK OF THE ARCHITECT AND THE SAME MAY NOT BE REPRODUCED, COPIED OR DISCLOSED WITHOUT THE EXPRESS WRITTEN CONSENT OF THE ARCHITECT.
© GAA ARCHITECTS. ALL RIGHTS RESERVED.

JOB NO:	XRPOS1.01	SHEET NO:	A4.1C
DATE:	9/20/22		
DRAWN:	GAA		
FILE NAME:	XRPOS0_4.1C		

PAPER: 2830IND-AGENCY SHEETS: 08/23/23 COLOR ELEVATIONS.DWG