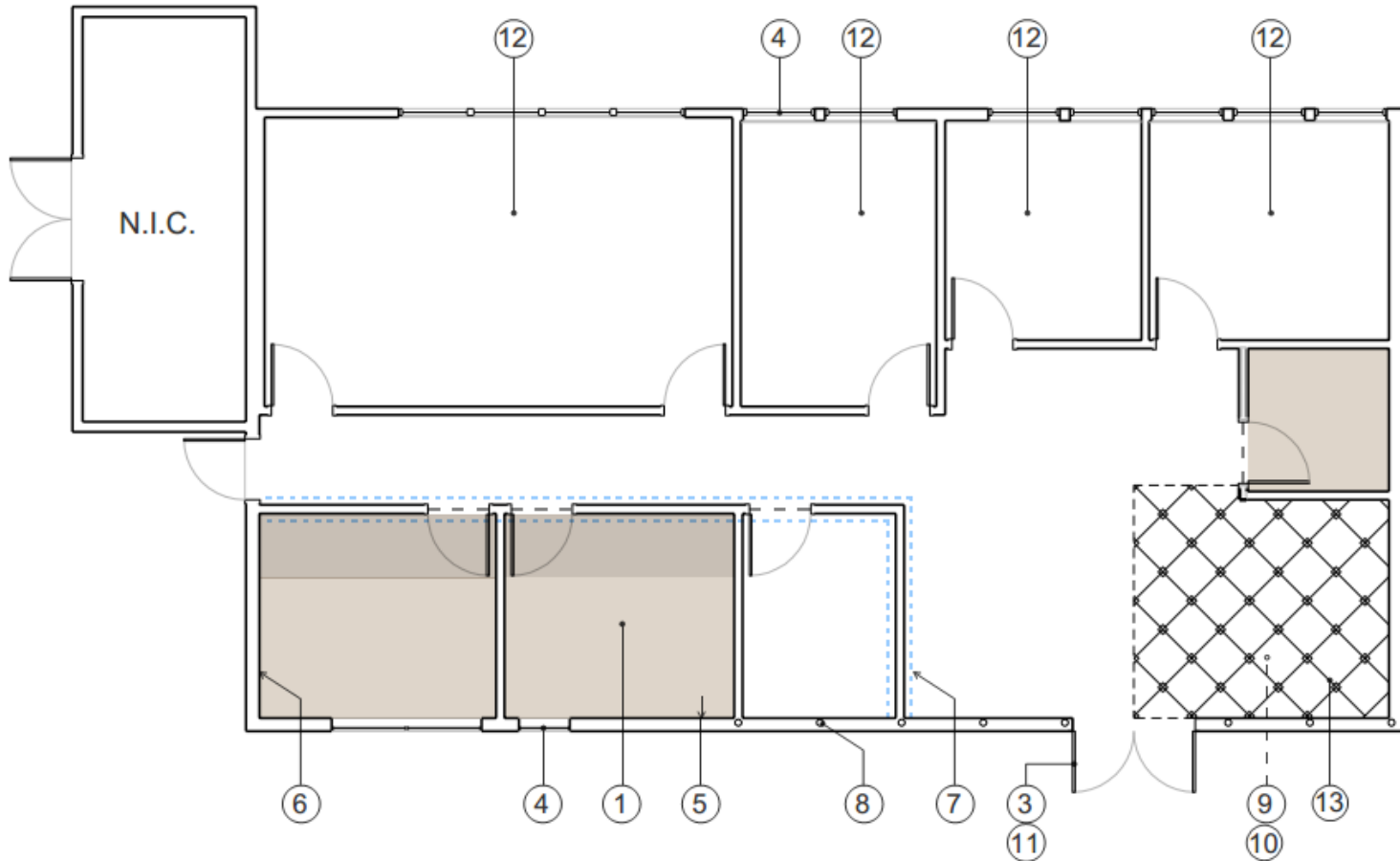




Community Center Concept Plan

Building 200, 300, 400 & 500

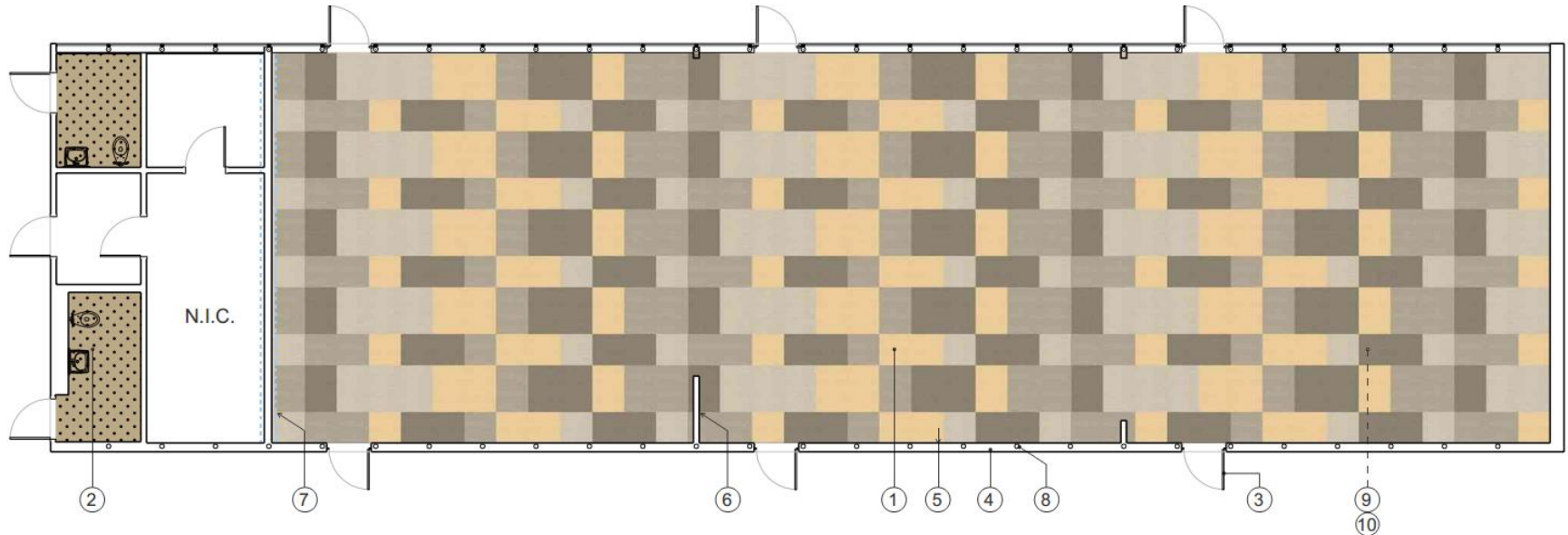
Building 200 (Room 204)



- ① new vinyl composite tile flooring (VCT)
- ② new epoxy floor coating w/ coved base
- ③ new panic device*
- ④ new storefront window system, typical
- ⑤ new primary paint color, P1
- ⑥ new primary paint color, P2
- ⑦ new accent paint color, A1
- ⑧ new accent paint color, A2

- ⑨ new suspended ceiling system
- ⑩ new 2x4 LED light fixture
- ⑪ new storefront door
- ⑫ existing flooring to remain
- ⑬ new tile to match existing

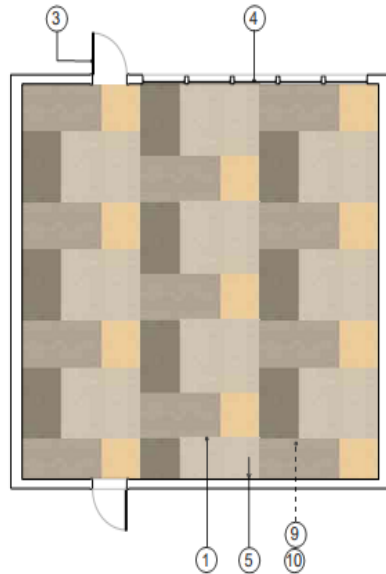
Building 200 (Room 201-203)



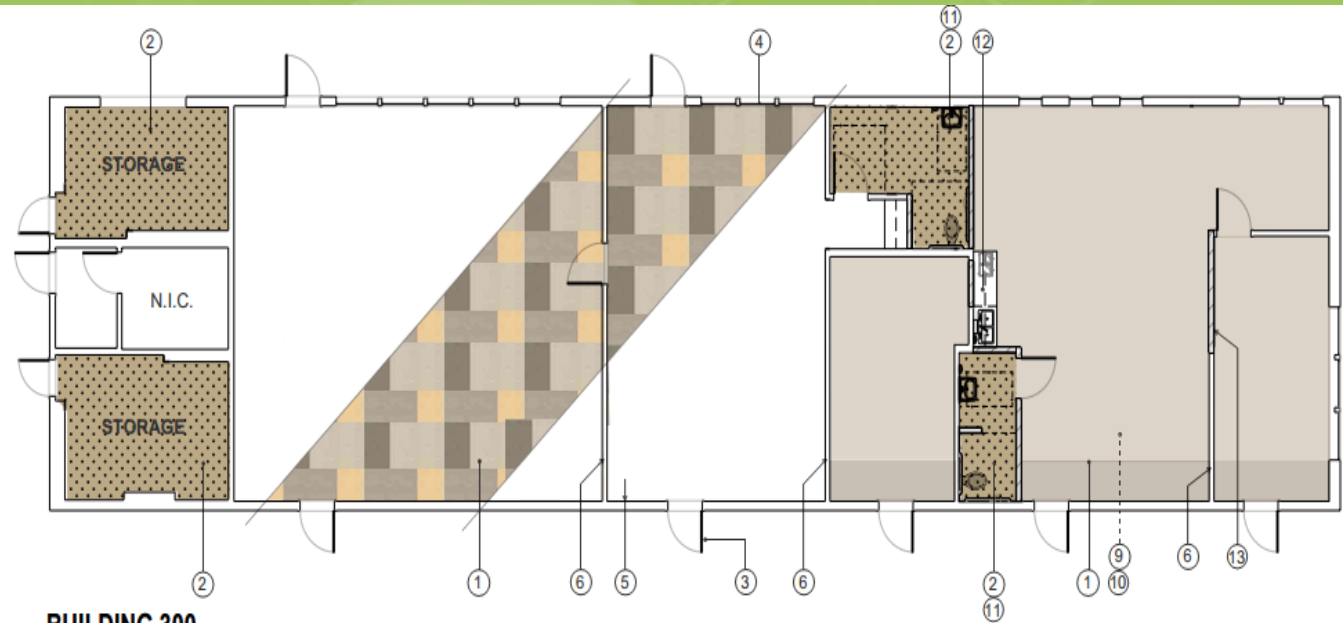
LEGEND

- | | |
|---|----------------------------------|
| ① new vinyl composite tile flooring (VCT) | ⑥ new primary paint color, P2 |
| ② new epoxy floor coating w/ coved base | ⑦ new accent paint color, A1 |
| ③ new panic device* | ⑧ new accent paint color, A2 |
| ④ new storefront window system, typical | ⑨ new drywall ceiling system |
| ⑤ new primary paint color, P1 | ⑩ new pendant LED light fixtures |

Building 300 (Room 301-206)



BUILDING 300
(room 306)

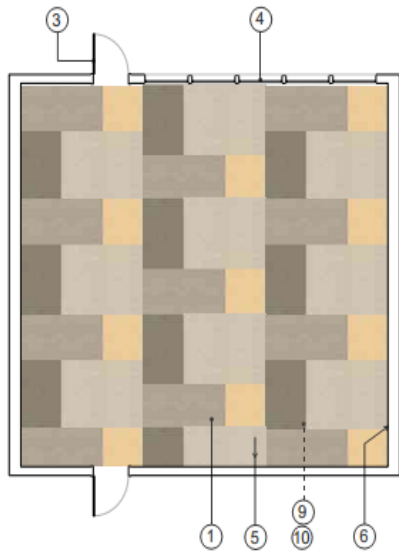


BUILDING 300
(rooms 301 - 305)

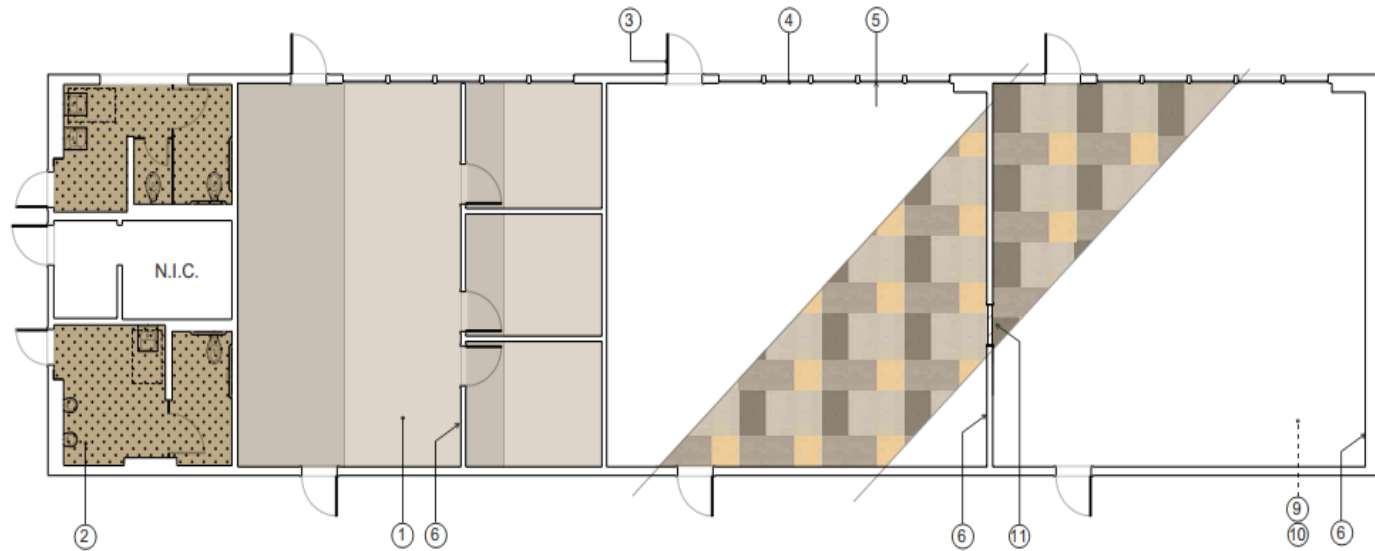
LEGEND

- | | | |
|---|--------------------------------|---------------------------------|
| ① new vinyl composite tile flooring (VCT) | ⑥ new primary paint color, P2 | ⑪ new ADA compliant toilet room |
| ② new epoxy floor coating w/ coved base | ⑦ new accent paint color, A1 | ⑫ new kitchenette |
| ③ new panic device* | ⑧ new accent paint color, A2 | ⑬ new wall / infill |
| ④ new storefront window system | ⑨ new suspended ceiling system | |
| ⑤ new primary paint color, P1 | ⑩ new 2x4 LED light fixture | |

Building 400 (Room 401-404)



BUILDING 400
(room 404)

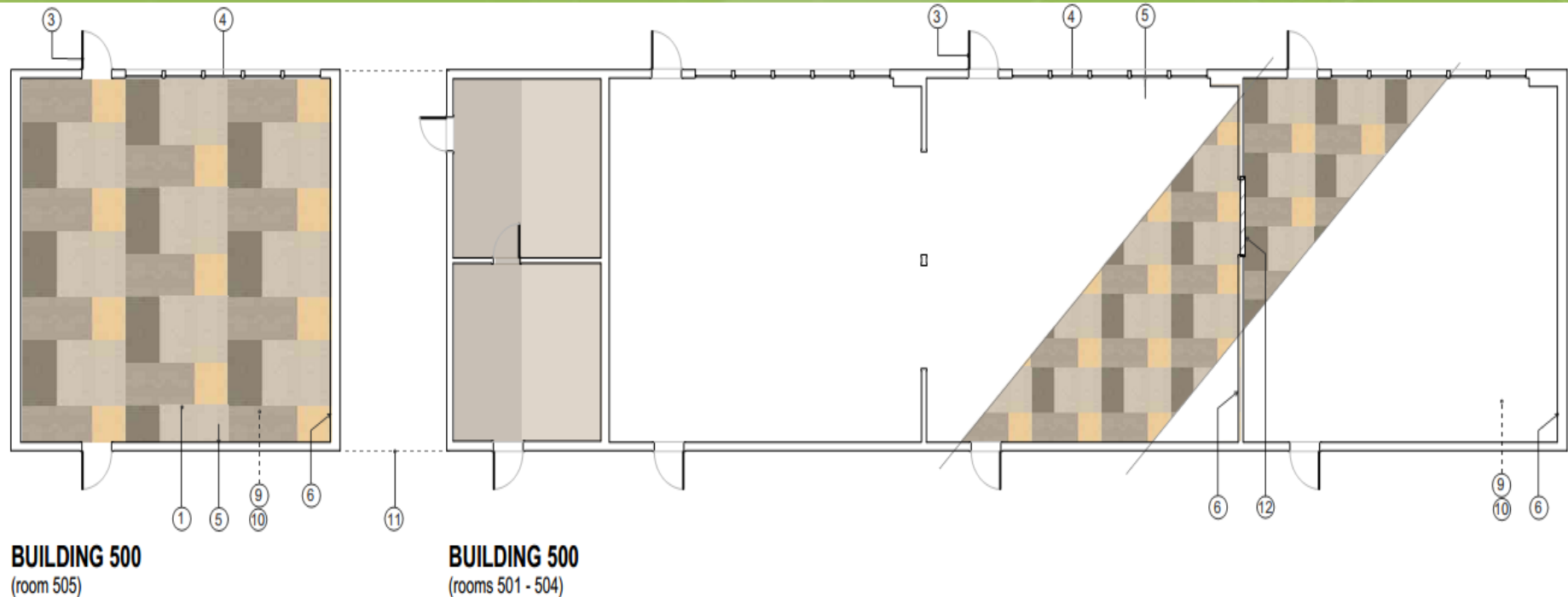


BUILDING 400
(rooms 401 - 403)

LEGEND

- | | | |
|---|--------------------------------|---------------------|
| ① new vinyl composite tile flooring (VCT) | ⑥ new primary paint color, P2 | ⑪ new wall / infill |
| ② new epoxy floor coating w/ coved base | ⑦ new accent paint color, A1 | |
| ③ new panic device* | ⑧ new accent paint color, A2 | |
| ④ new storefront window system | ⑨ new suspended ceiling system | |
| ⑤ new primary paint color, P1 | ⑩ new 2x4 LED light fixture | |

Building 500 (Room 501-505)

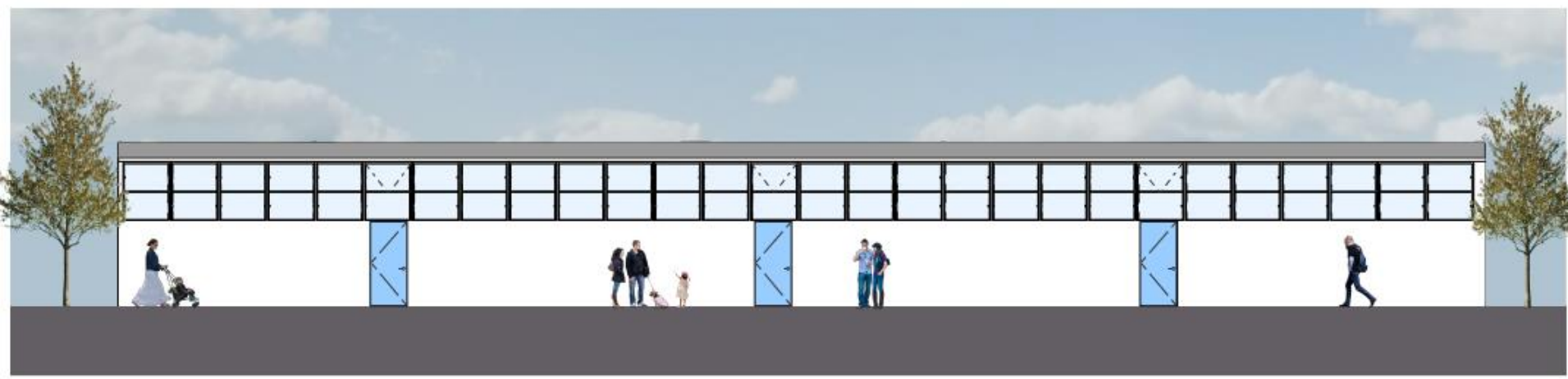


LEGEND

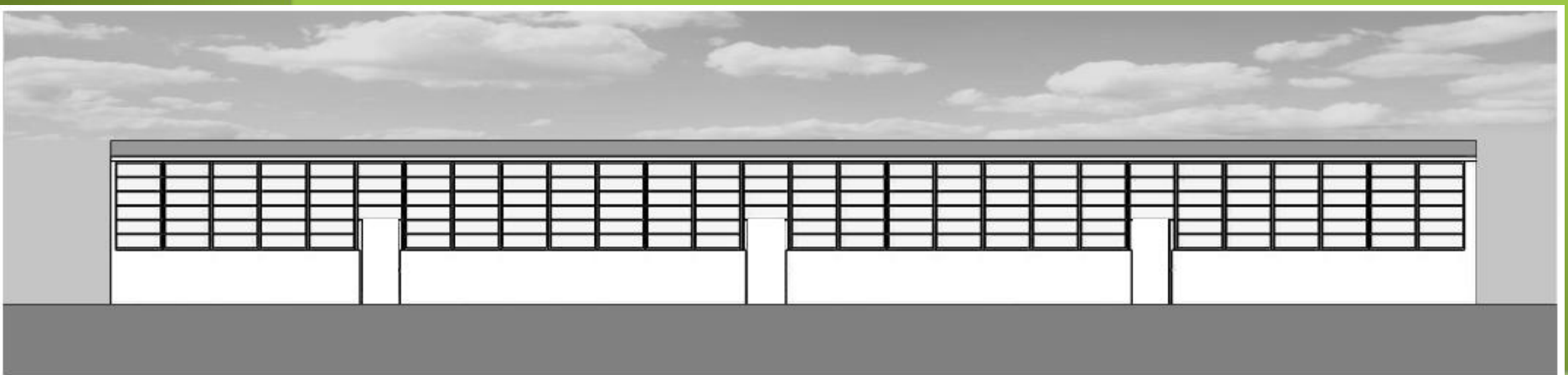
- | | | |
|---|--------------------------------|-----------------------------|
| ① new vinyl composite tile flooring (VCT) | ⑥ new primary paint color, P2 | ⑪ new opaque fencing / gate |
| ② new epoxy floor coating w/ coved base | ⑦ new accent paint color, A1 | ⑫ new wall / infill |
| ③ new panic device* | ⑧ new accent paint color, A2 | |
| ④ new storefront window system | ⑨ new suspended ceiling system | |
| ⑤ new primary paint color, P1 | ⑩ new 2x4 LED light fixture | |



Proposed Window System



Existing Window System



Building 200, proposed window system

WINDOW SCHEMATICS BUILDING 200



Armstrong suspended drywall system with Prudential 'Wave' light fixtures