



CONFORMED COPY

**ANNEXATION MAP NO. 7 OF  
COMMUNITY FACILITIES DISTRICT NO. 2016-1  
(PUBLIC SERVICES)  
CITY OF RIALTO  
SAN BERNARDINO COUNTY  
STATE OF CALIFORNIA**

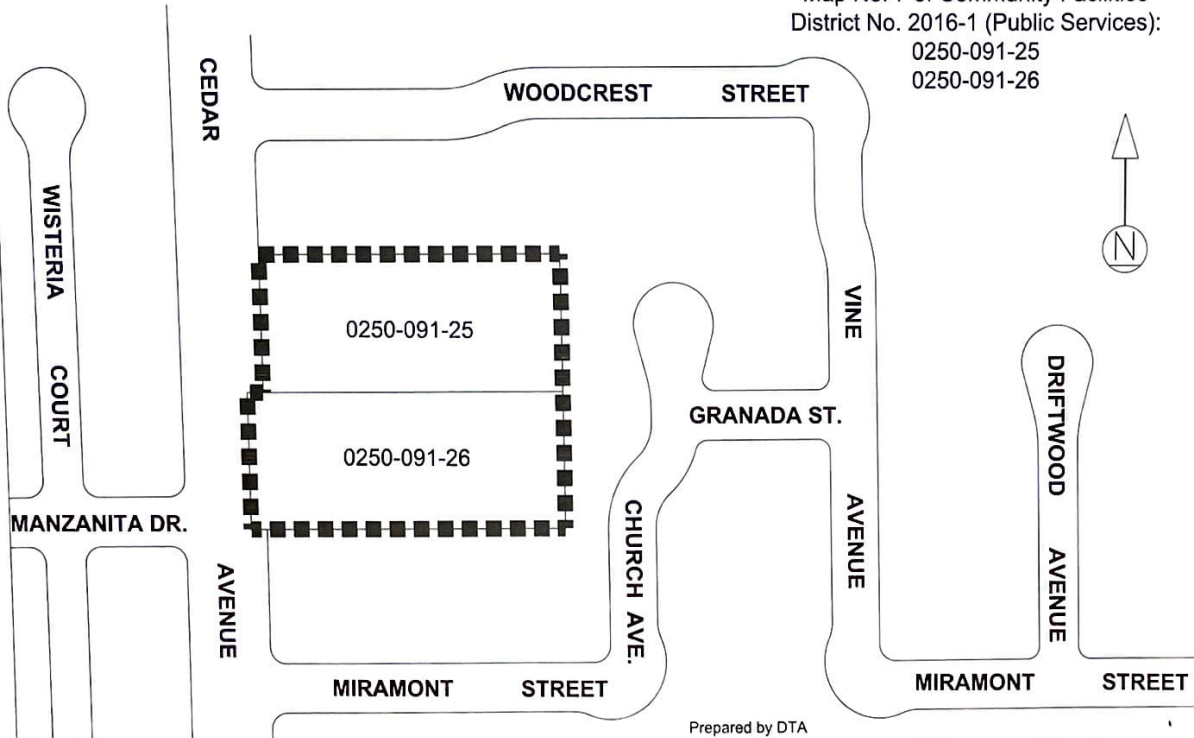
**LEGEND**

-  Proposed Boundaries of City of Rialto Annexation Map No. 7 of Community Facilities District No. 2016-1 (Public Services)  
 Assessor Parcel Line

Reference is made to the Assessor maps of San Bernardino County for a description of the lines and dimensions of each lot and parcel.

Reference is made to that boundary map of the Community Facilities District No. 2016-1 (Public Services) of the City of Rialto recorded with the San Bernardino County Recorder's office on October 6, 2016 in book 87, page 29 of Maps of Assessment and Community Facilities Districts, as instrument no. 2016-0418016.

Assessor Parcel Numbers within the Boundaries of City of Rialto Annexation Map No. 7 of Community Facilities District No. 2016-1 (Public Services):  
 0250-091-25  
 0250-091-26

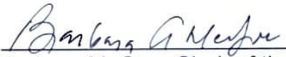


Prepared by DTA

- (1) Filed in the office of the Clerk of the City of Rialto this 21<sup>st</sup> day of June, 2023.

  
 Barbara McGee, Clerk of the City of Rialto, California


- (2) I hereby certify that the within map showing the proposed boundaries of Annexation Map No. 7 of Community Facilities District No. 2016-1 (Public Services) of the City of Rialto, San Bernardino County, State of California, was approved by the City Council of the City of Rialto at a regular meeting thereof, held on the 13<sup>th</sup> day of June, 2023, by its Resolution No. 2023.

  
 Barbara McGee, Clerk of the City of Rialto, California

## San Bernardino County Recorder's Certificate

This map has been filed under Document Number 2023-0158724, this 28<sup>th</sup> day of June, 2023, at 8:25 Am., in Book 91 of Maps of Assessment and Community Facilities Districts at page 24, in the office of the county recorder in San Bernardino County, State of California, at the request of the City of Rialto in the amount of \$ 11.00.

~~Chris Wilhite~~  
~~Bob Dutton~~  
 Assessor-Recorder  
 San Bernardino County

By:   
 Deputy Recorder