

LEGEND

COLORS:

A

MATERIAL:

PRIMARY COLOR:

B

MATERIAL:

SECONDARY COLOR:

BODY OF BUILDING

SHERWIN WILLIAMS SW 7003 "TOQUE WHITE"

ROLL-UP DOOR, SIDE CANOPY, TOP EYEBROW/
COPING & NEW FRONT ENTRY CANOPY

SHERWIN WILLIAMS SW 7674 "PEPPERCORN"

MATERIAL BOARD



- CORRUGATED METAL PANELS

SW 7003
Toque White

Interior / Exterior

Location Number: 256-C3

256 Toque White

COORDINATING COLORS

SIMILAR COLORS

DETAILS

View All White & Pastel Paint Colors

R: 231 G: 226 B: 218 Hex Value: #e7e2da LRV: 76

Color Collections: Living Well

- PRIMARY COLOR: SHERWIN WILLIAMS SW 7003 "TOQUE WHITE"



- ROLL-UP DOOR

SW 7674
Peppercorn

Interior / Exterior

Location Number: 236-C7

236 Peppercorn

COORDINATING COLORS

SIMILAR COLORS

DETAILS

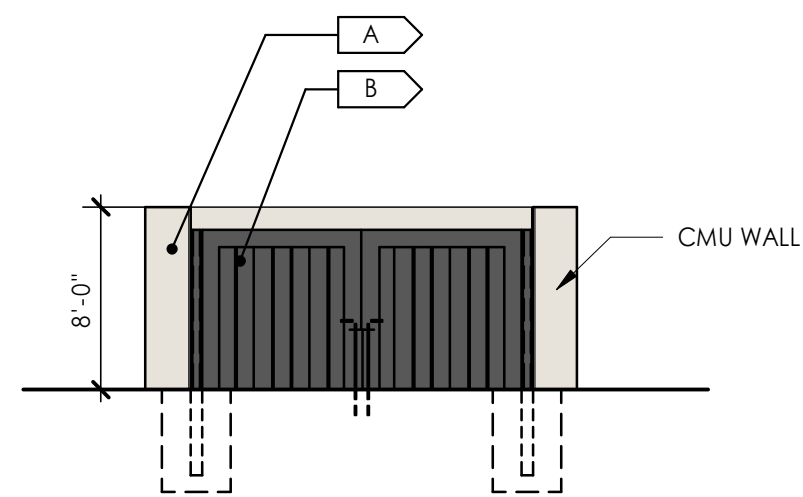
View All Neutral Paint Colors

R: 88 G: 88 B: 88 Hex Value: #585858 LRV: 10

Color Collections: Purely Refined, Reasoned, Cool Neutrals, 2024 Deepes & Darks, Top 50 Interior Colors, Top 50 Exterior Colors

- SECONDARY COLOR: SHERWIN WILLIAMS SW 7674 "PEPPERCORN"

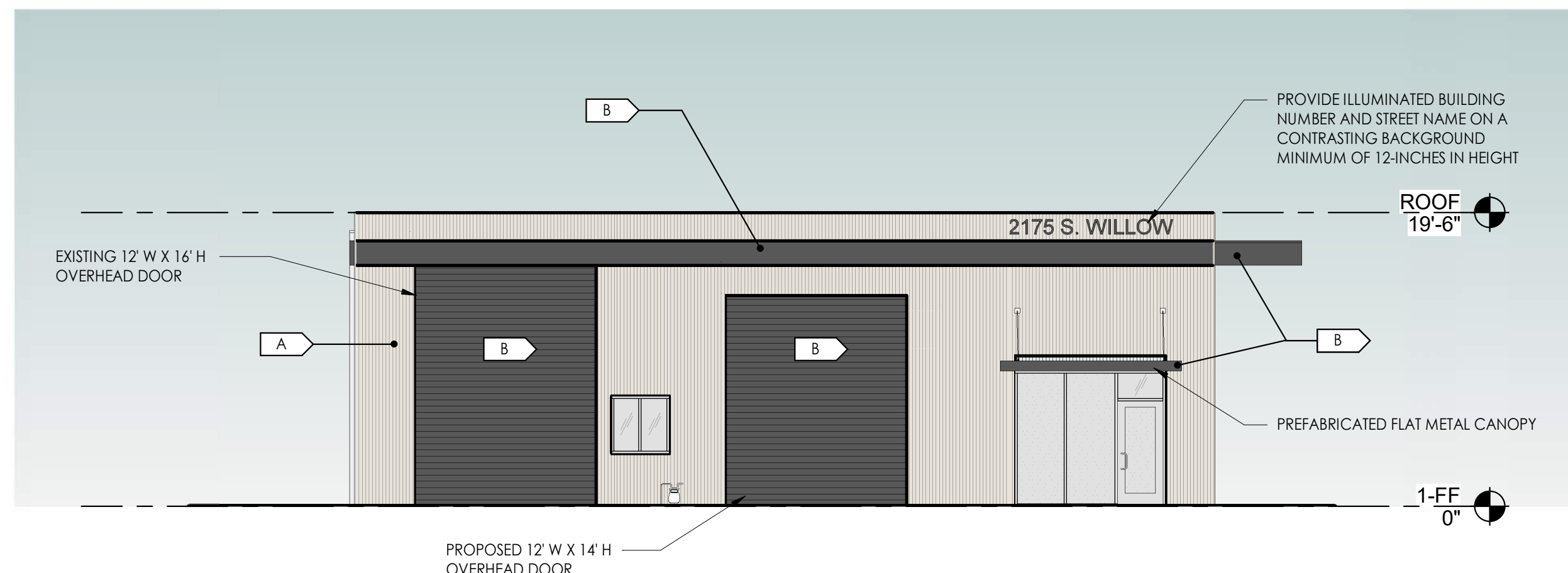
- PREFABRICATED FLAT METAL CANOPY



TRASH ENCLOSURE

1/8" = 1'-0"

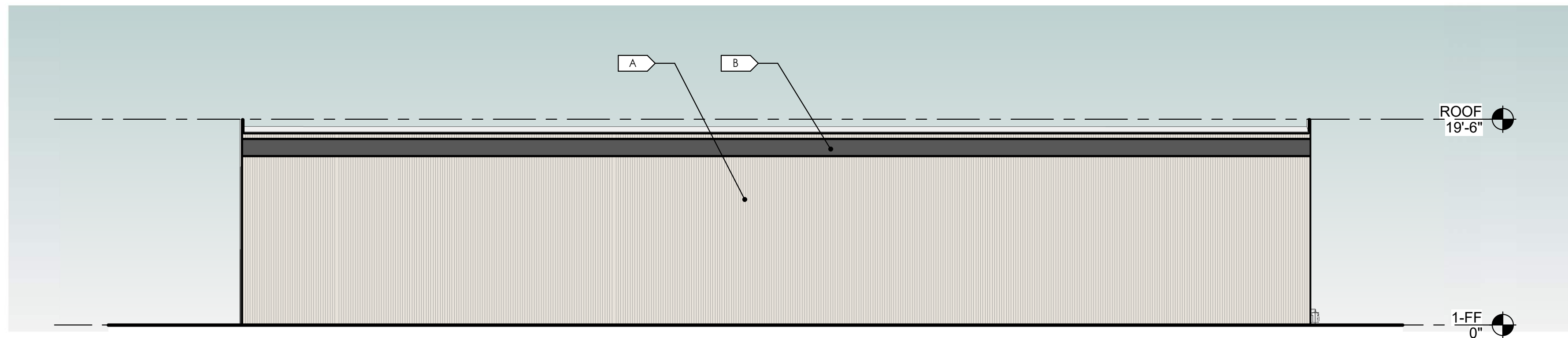
5



PROPOSED WEST ELEVATION

1/8" = 1'-0"

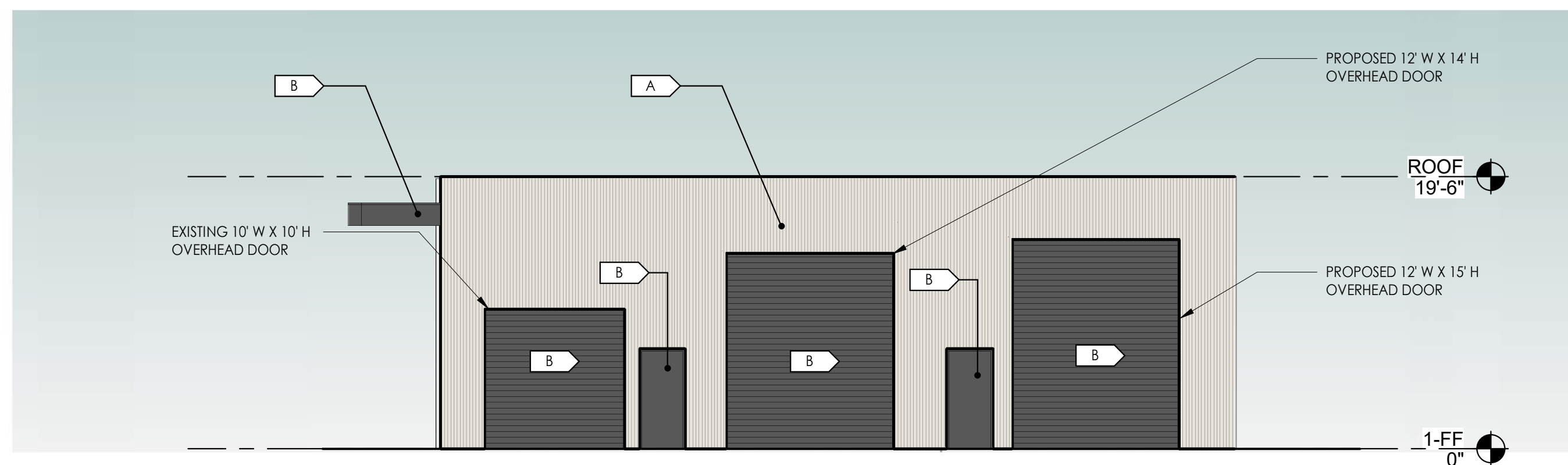
1



PROPOSED NORTH ELEVATION

1/8" = 1'-0"

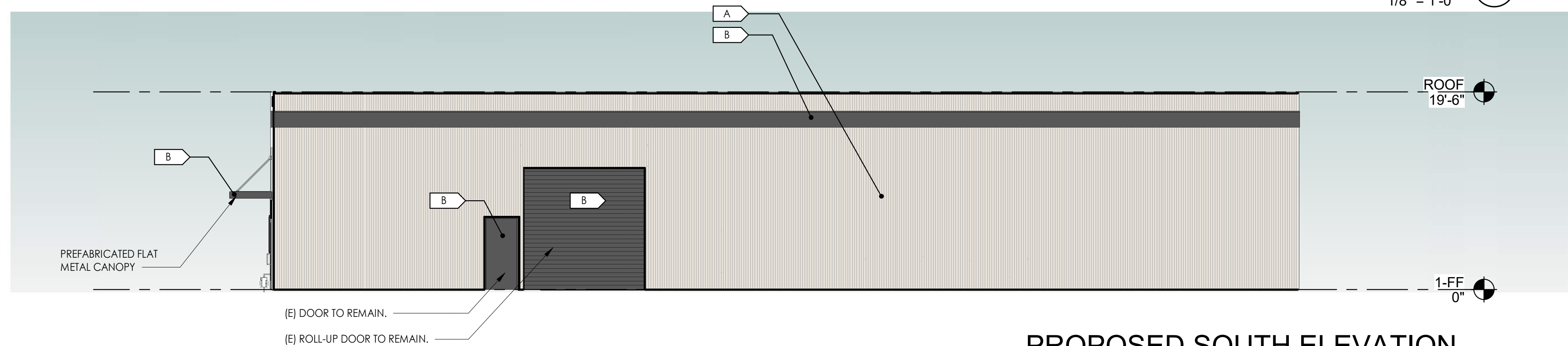
2



PROPOSED EAST ELEVATION

1/8" = 1'-0"

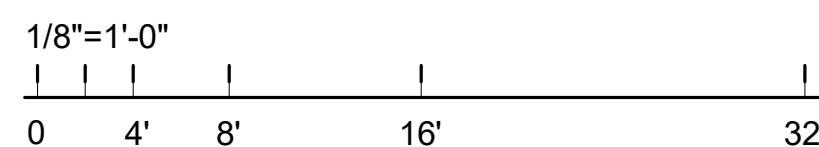
3



PROPOSED SOUTH ELEVATION

1/8" = 1'-0"

4



PROPOSED EXTERIOR ELEVATIONS

2175 S WILLOW AVE
2175 S WILLOW AVE,
BLOOMINGTON, CA 92316