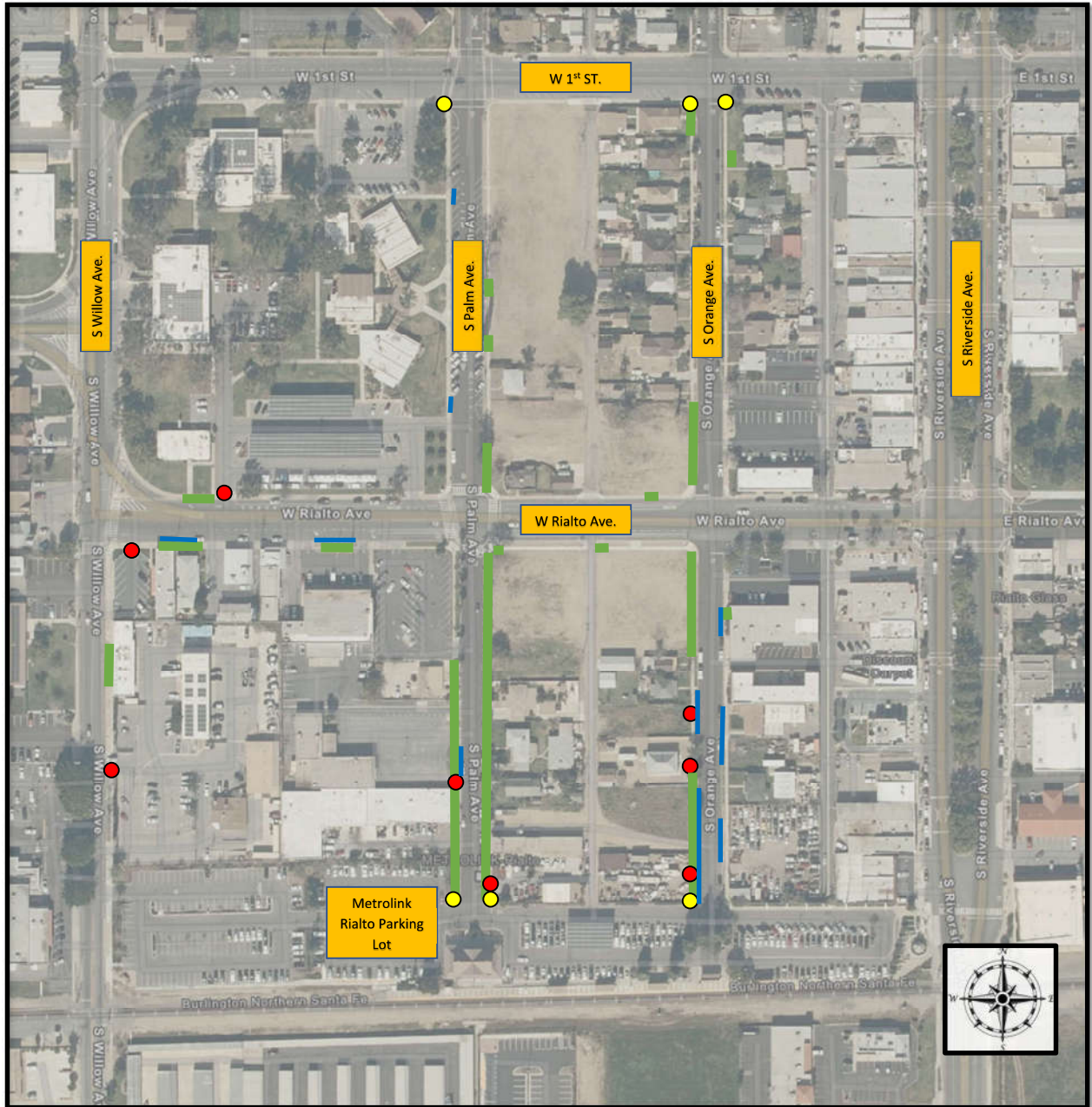


CDBG CURB, GUTTER SIDEWALK IMPROVEMENT PROJECT, PROJECT NO. CB2201
LOCATION LIST
ATTACHMENT 1

NUMBER	COORDINATE	STREET NAME	WIDTH	LENGTH	SIDEWALK / SF	CURB & GUTTER / LF	DWY APPROACH / SF	CROSS-GUTTER & SPANDREL / SF	CURB RAMP / EA
	SWC	PALM AVE./1ST ST.							1
150	S	PALM AVE.			0	20			
226	S	PALM AVE.	5	6	30				
260	S	PALM AVE.	4	33	132	30	210		
270	S	PALM AVE.	4	9	36				
	NWC	PALM AVE. AT METROLINK PARKING LOT	1	15	15				1
	NEC	PALM AVE. AT METROLINK PARKING LOT			0		110		1
217 & 209	S	PALM AVE.	5	217	1085				
201	S	PALM AVE., SIDEWALK IS ALONG RIALTO AVE. EAST OF PALM AVE.	5	11	55				
137	S	PALM AVE.	5	35	175				
137	S	PALM AVE.	5	23	115				
	SEC	S. ORANGE/W. 1ST ST.			0				1
	SWC	S. ORANGE/W. 1ST ST.			0				1
102	S	ORANGE AVE.	5	10	50				
126	S	ORANGE AVE., IN FRONT OF EMPTY LOT	5	30	150				
126	S	ORANGE AVE., IN FRONT OF EMPTY LOT	5	78	390				
220	S	ORANGE AVE., VACANT LOT NORTH OF	5	133	665	15	70		
220	S	ORANGE AVE.	5	19	95				
220	S	ORANGE AVE., VACANT LOT SOUTH OF	5	12	60	40			
230	S	ORANGE AVE., VACANT LOT SOUTH OF	5	23	115	114	80		
	NWC	ORANGE AVE./METROLINK, CAR STORAGE LOT	5	64	320	22	100		1
	NWC	ORANGE AVE./METROLINK, CAR STORAGE LOT			0	27			
149	S	ORANGE AVE.			0	65			
211	S	ORANGE AVE.	5	7	35				
225	S	ORANGE AVE.			0	11			
225	S	ORANGE AVE., LOT SOUTH OF			0	56			
290	W	RIALTO AVE.	6	17	102				
290	W	RIALTO AVE.	6	20	120		297		
290	W	RIALTO AVE.	6	3	18				
220	W	RIALTO AVE., AT 3X5 VAULT IN FRONT OF VACANT LOT EAST OF	4	8	32				
220	W	RIALTO AVE., AT ALLEY ACROSS FROM	5	12	60				
241	W	RIALTO AVE.	7	24	168			28	
279	W	RIALTO AVE.	11	32	352	32			
285	W	RIALTO AVE.	5	20	100	6	120		
285	W	RIALTO AVE.			0	16			
245	S	WILLOW AVE.	4	63	252	17			
245	S	WILLOW AVE.			0	28			
247	S	WILLOW AVE.			0		234		
249	S	WILLOW AVE.	4	8	32				
Total Estimated Quantity:					4759	499	1221	28	6

CDBG CURB, GUTTER, & SIDEWALK IMPROVEMENT PROJECT
CITY PROJECT NO. CB2201
LOCATION MAP
ATTACHMENT 1



LEGEND

- ADA Curb Ramp Improvement
- Driveway Improvement
- Sidewalk Improvement
- Curb & Gutter Improvement