


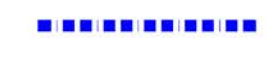


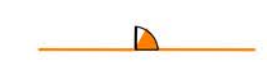






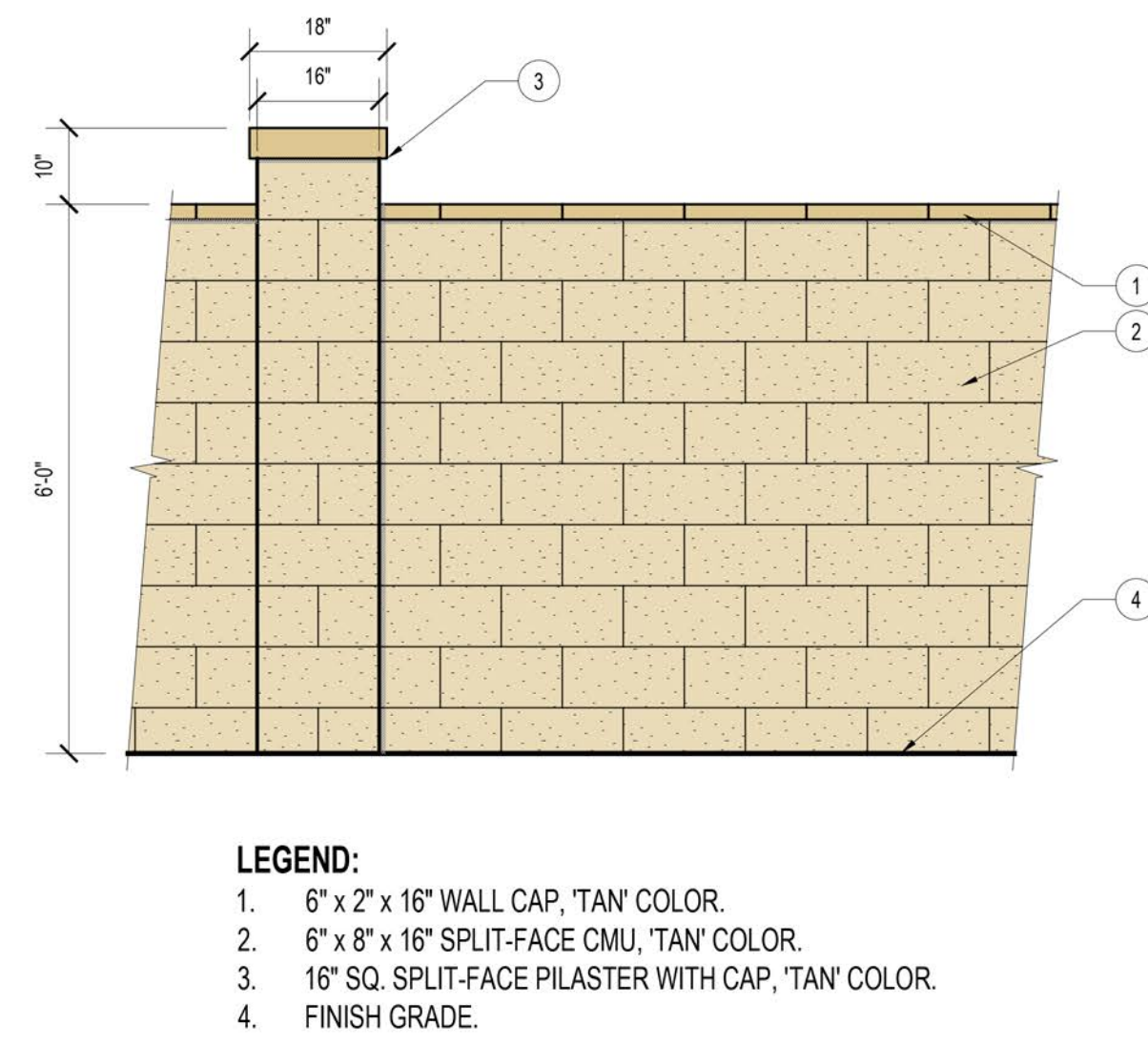


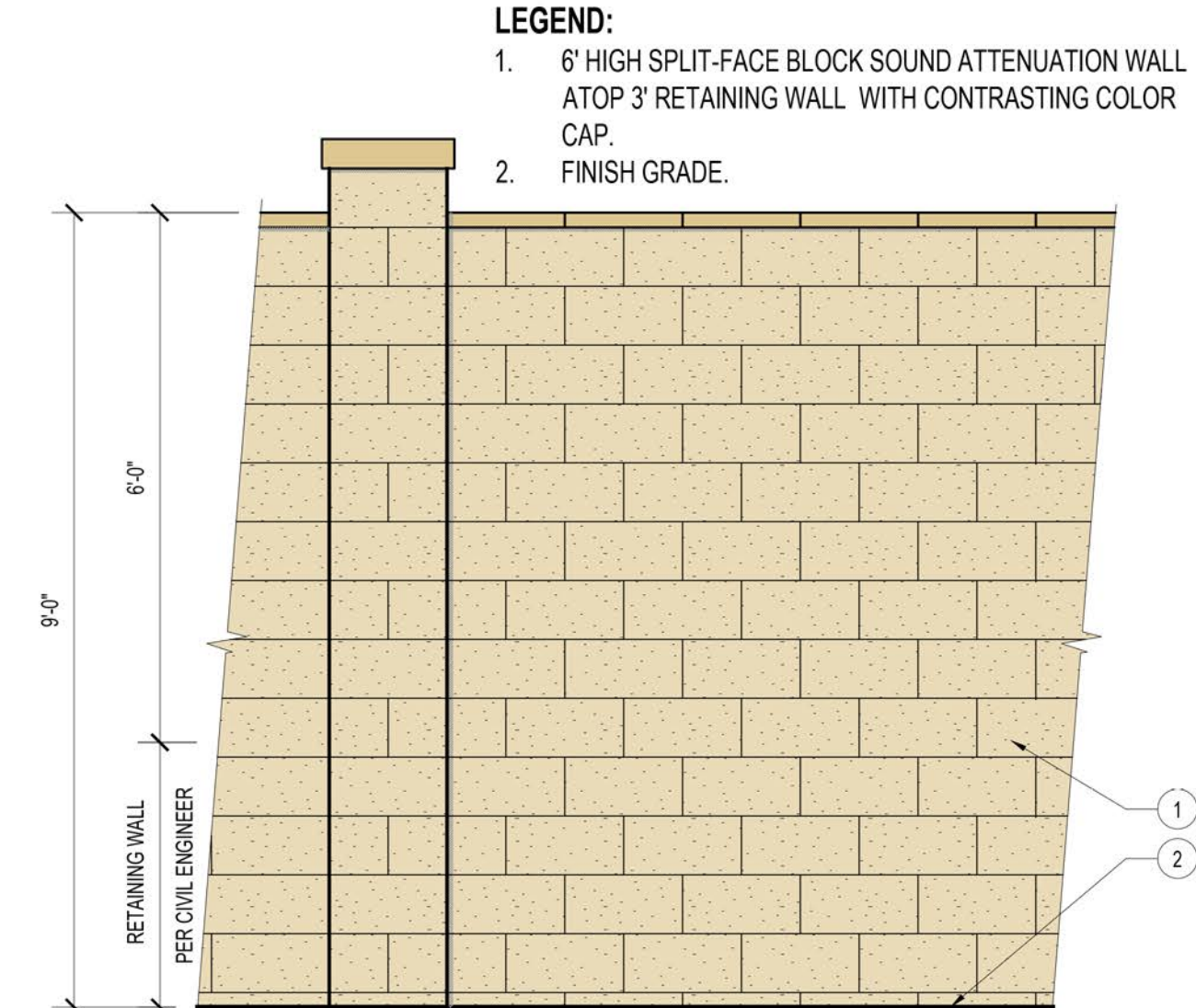


FEATURE LEGEND:

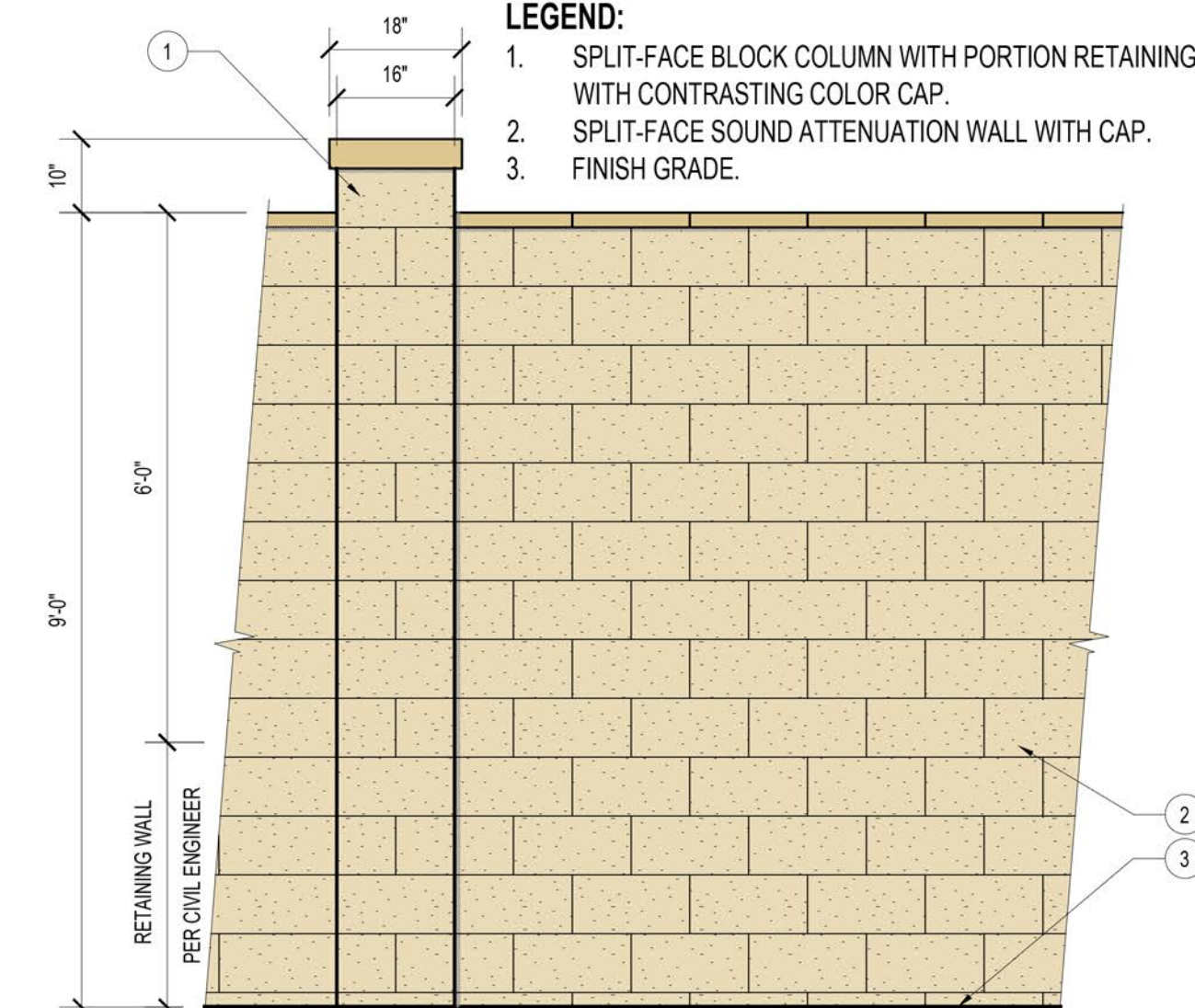
-  ① Existing 'Renaissance' Primary Vehicular and Pedestrian Gate Entries from Linden Avenue. Per Phase I.
-  ② Tubular Steel View Fence. See Detail "I", Sheet L-3.
-  ③ Corner Pilaster. See Detail "A", Sheet L-3.
-  ④ 6' High Single Side Public View Split-Face Block Wall. See Detail "A", Sheet L-3.
-  ⑤ 6' High Vinyl Privacy Fence. See Detail "E", Sheet L-3.
-  ⑥ Exit Only Secondary Residence Vehicular & EVA Gate from Linden Avenue. See Detail "A", Sheet L-4.
-  ⑦ Pedestrian Entry Access Gates. Both Sides. See Detail "H", Sheet L-3. & Detail "A", Sheet L-4.
-  ⑧ Existing Adjacent Property Block Wall.
-  ⑨ Combo Retaining and 6' High Block Wall. See Detail "B", Sheet L-3.
-  ⑩ Low Retaining Wall Per Phase I Plans. By Others.
-  ⑪ Grasspave2 EVA with Removable lockable bollards.
-  ⑫ 3' Wide Tubular Steel Gate. See Detail "J", Sheet L-3.
-  ⑬ Trash Enclosure. See Details "B" and "C", Sheet L-4.



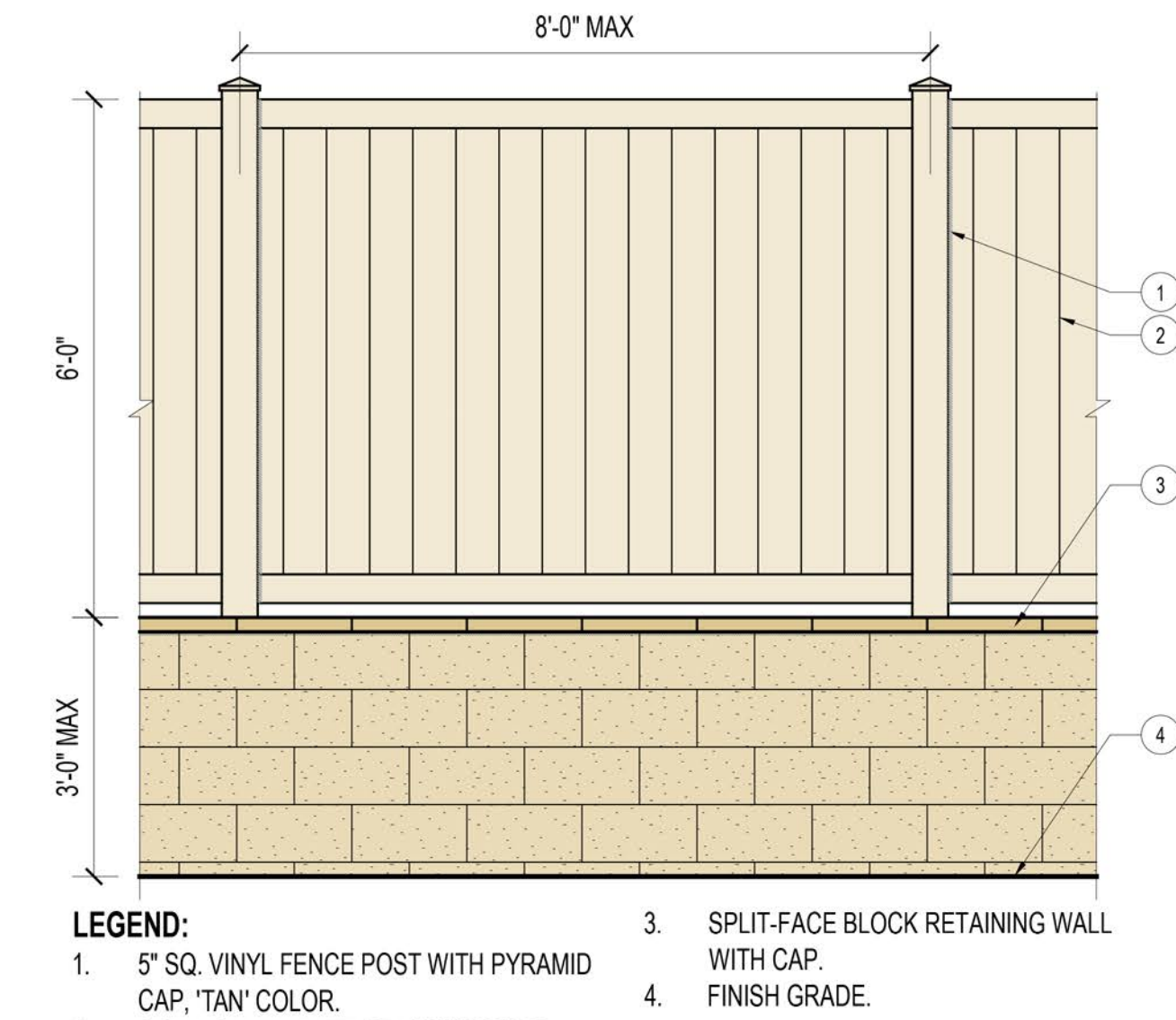
A 6' HIGH SPLIT-FACE BLOCK WALL
SCALE: 1/2" = 1'-0"



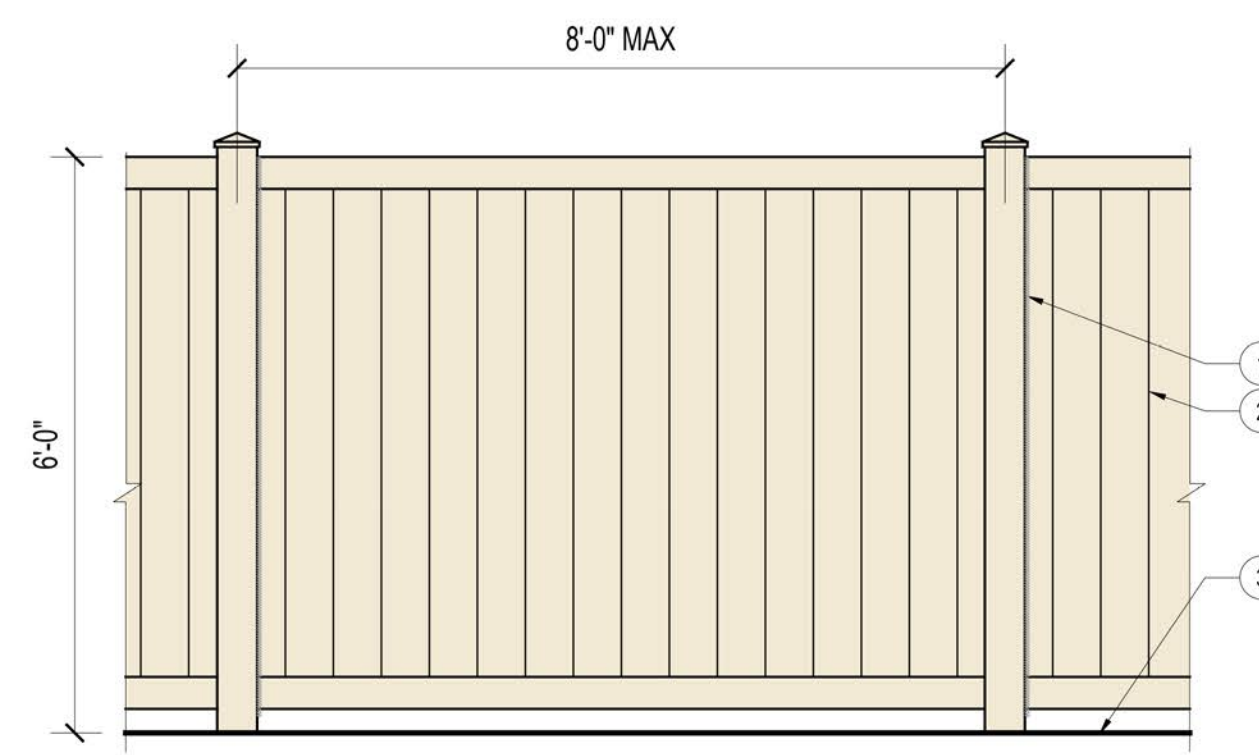
B SPLIT-FACE WALL ATOP RET. WALL
SCALE: 1/2" = 1'-0"



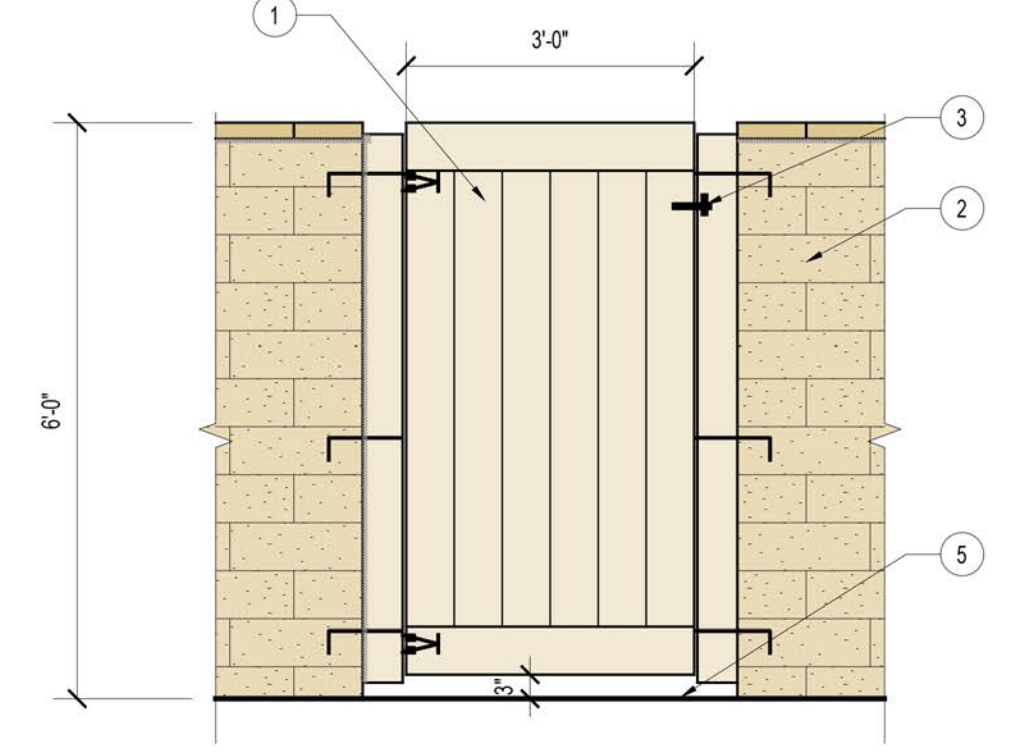
C S.F. COLUMN w/ PORTION RETAINING
SCALE: 1/2" = 1'-0"



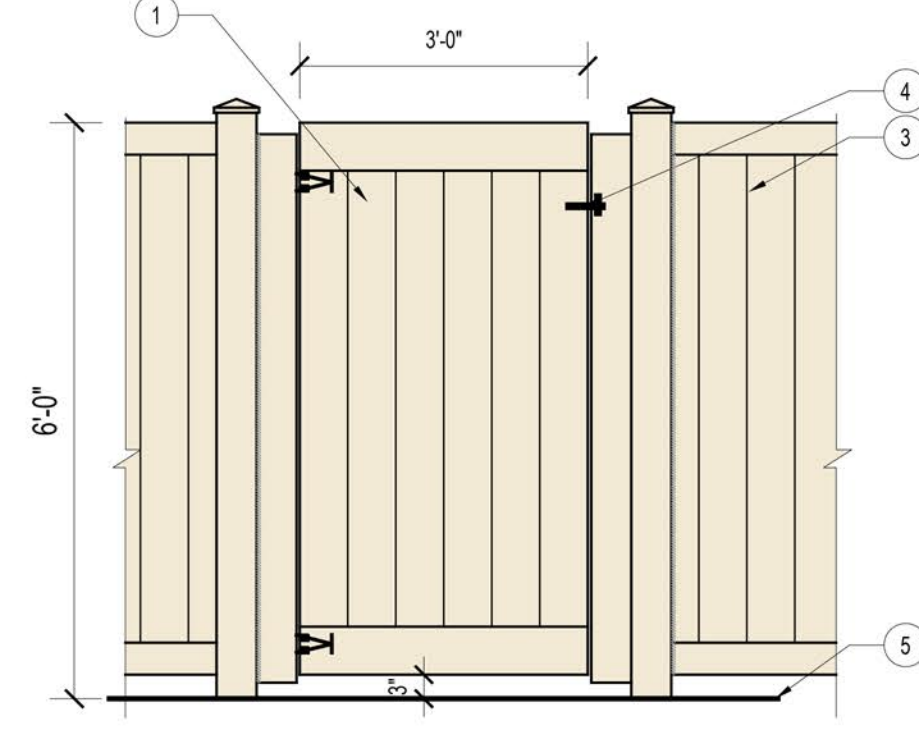
D COMBO VINYL FENCE / CMU WALL
SCALE: 1/2" = 1'-0"



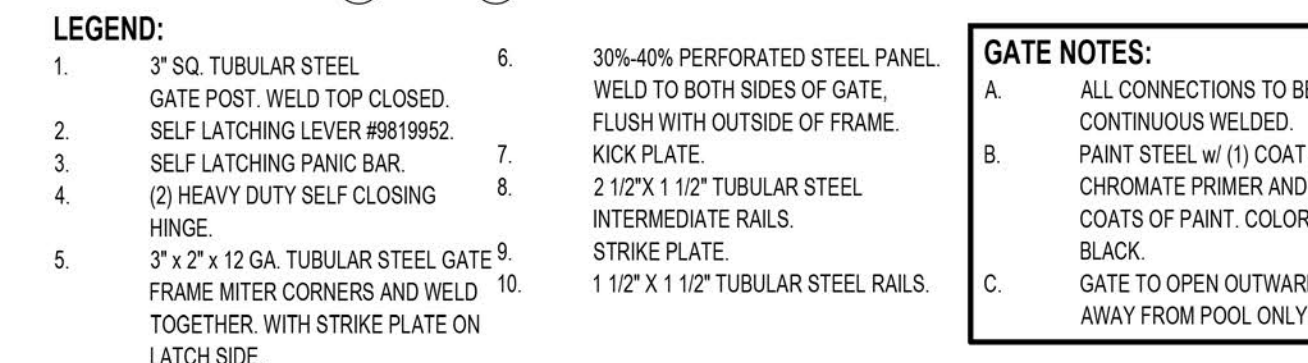
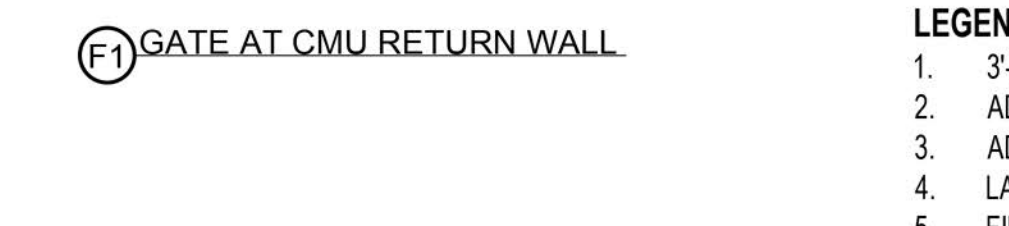
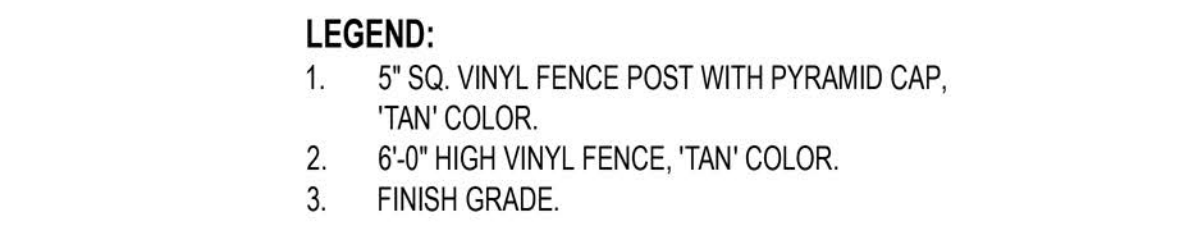
E 6'-0" HIGH VINYL FENCE
SCALE: 1/2" = 1'-0"



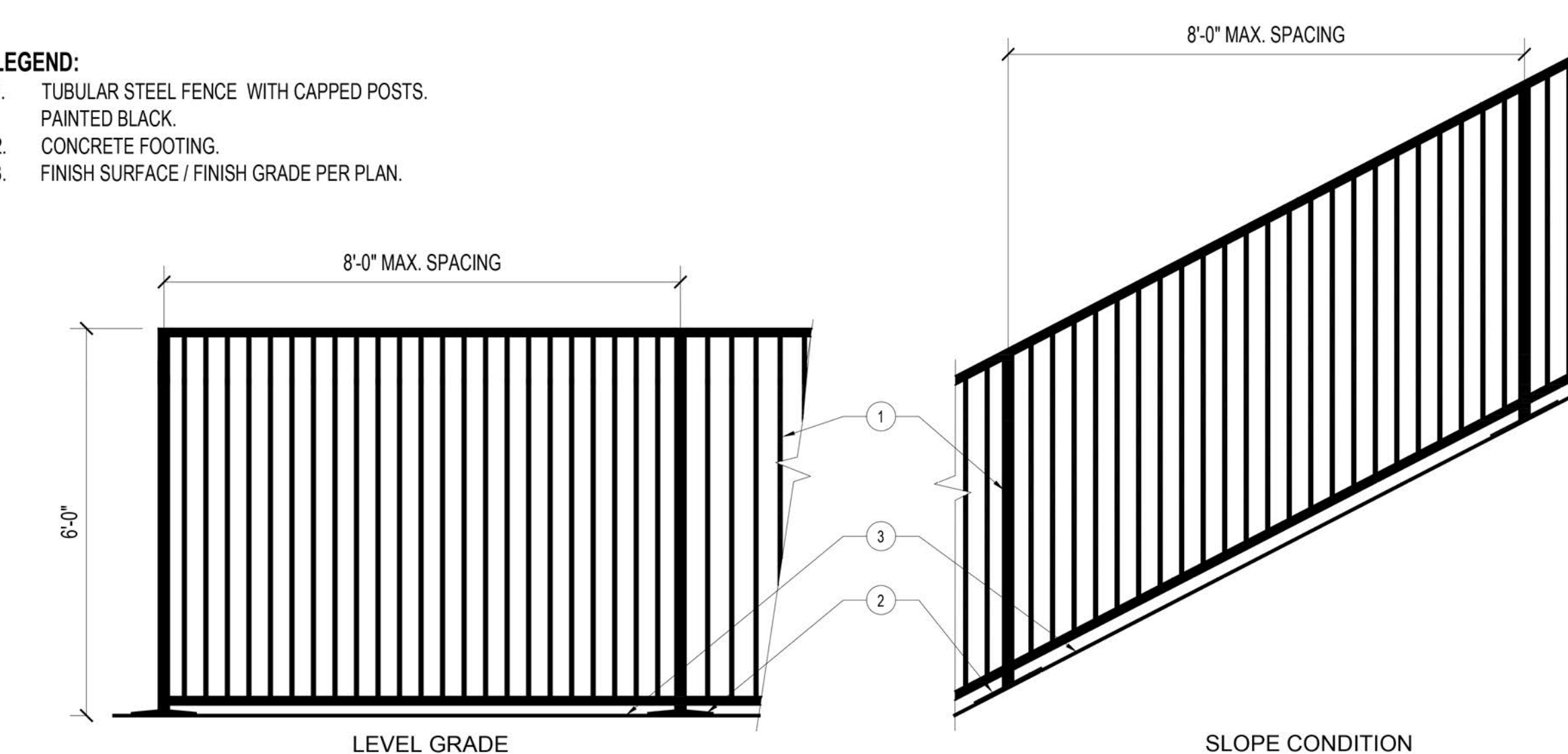
F 3'-0" WIDE SIDEYARD GATE CONDITIONS
SCALE: 1/2" = 1'-0"



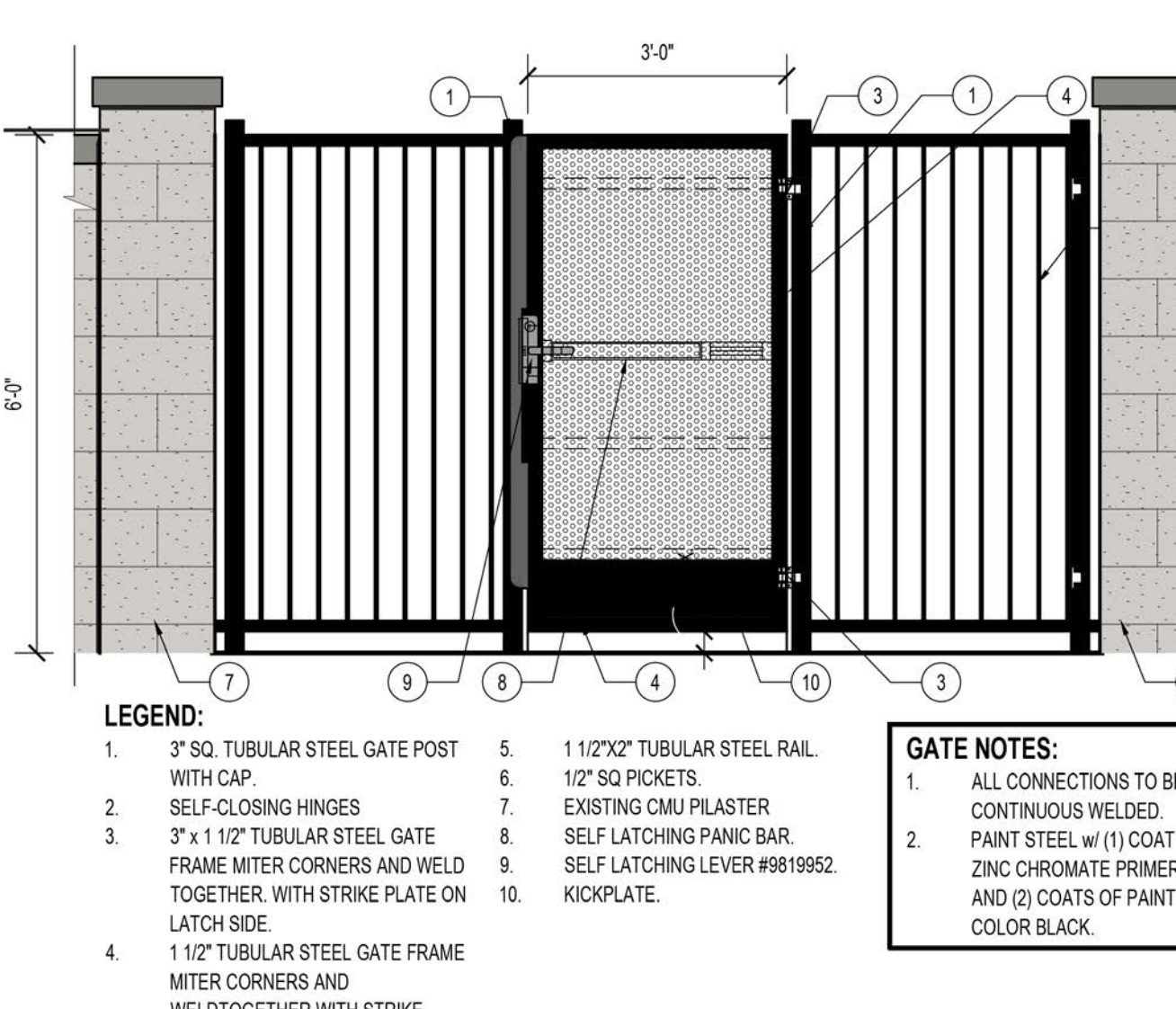
G 6' H x 3' W TUBULAR STEEL POOL GATE
SCALE: 1/2" = 1'-0"
REFERENCE NUMBER: REFNOTE



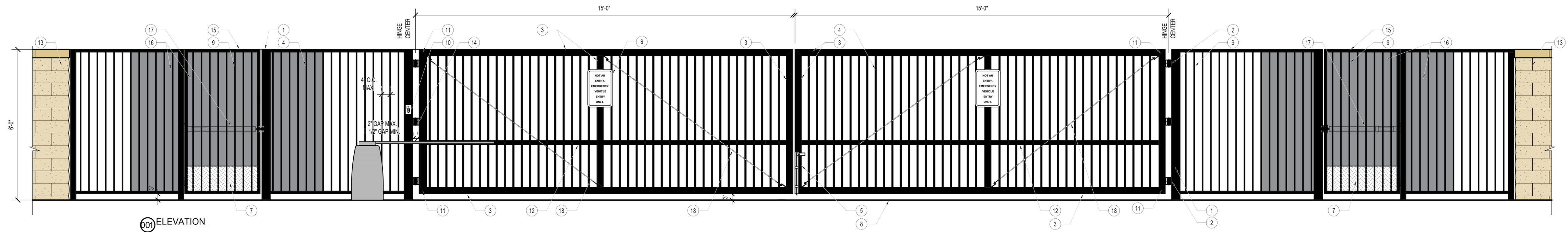
H 6' T. S. MAINTENANCE GATE
SCALE: 1/2" = 1'-0"



I 6' HIGH TUBULAR STEEL FENCE
SCALE: 1/2" = 1'-0"



J 36" W TUBULAR STEEL GATE
SCALE: 1/2" = 1'-0"
REFERENCE NUMBER: REFNOTE



001 ELEVATION

LEGEND:

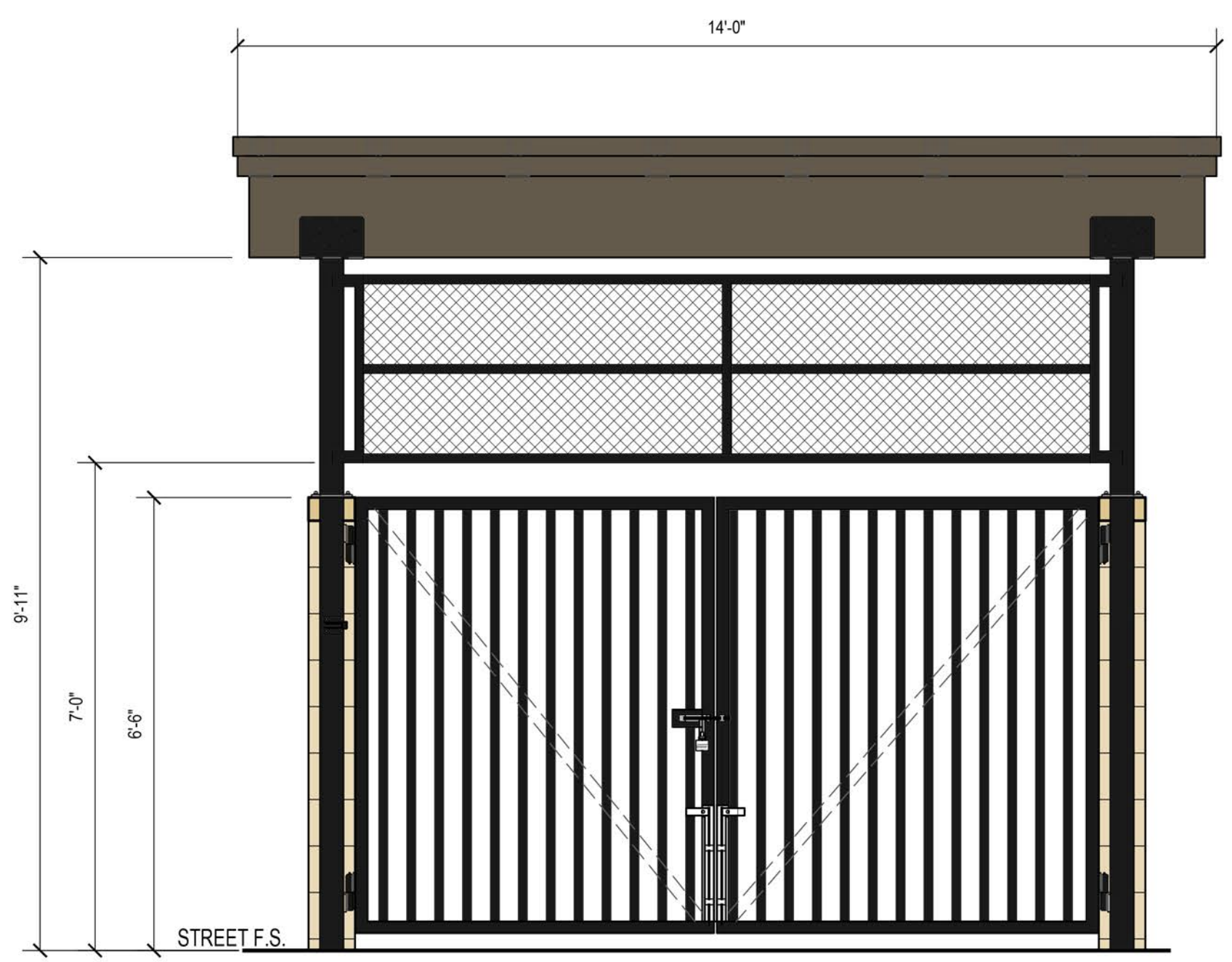
- 1. 6" SQ. x 1/4" TUBULAR STEEL GATE POST, WELD TOP CLOSED.
- 2. LIFT MASTER HEAVY DUTY ROLLER GAGE BEARING HINGE #2000P. (3) PER GATE LEAF, WELD TO POST AND GATE FRAME.
- 3. 3" x 3" x 1/8 GA. TUBULAR STEEL GATE FRAME, MITER CORNERS AND WELD TOGETHER (2" x 3" x 1/4" HINGE VERTICAL PER NOTE 19).
- 4. 5/8" SQ. x 1/8 GA. TUBULAR STEEL GATE PICKETS AT 4" O.C. MAX.
- 5. KING ARCHITECTURAL METALS 20" x 3/4" HEAVY DUTY LOCKING CANE BOLT #30-6020, OR APPROVED EQUAL. PADLOCK PROVIDED BY OWNER. INSTALL IN FIXED EVA ACCESS ONLY SIDE AS SHOWN.
- 6. NOT AN ENTRY - EMERGENCY VEHICLE ENTRY ONLY SIGN.
- 7. 1/2" HIGH x 1/4" THICK STEEL KICK PLATE, WELD FLUSH WITH INSIDE EDGE OF GATE FRAME.
- 8. FINISH SURFACE PER CIVIL ENGINEER'S PLANS.
- 9. ADJACENT TUBULAR STEEL FENCE PER CONSTRUCTION PLAN.
- 10. PROVIDE AND SECURE APPROVED KNOX BOX TO GATE POST FOR EMERGENCY VEHICLE ACCESS. INSTALL ON BOTH SIDES OF FENCE IF ACCESS IS REQUIRED FROM EITHER SIDE.
- 11. 1/4" THICK STEEL BRACKET, WELD TO GATE FRAME AT CORNERS.
- 12. 2" x 2" x 1/8 GA. TUBULAR STEEL GATE FRAME AND INTERMEDIATE RAIL.
- 13. CORNER PLASTER.
- 14. 2" x 2" x 1/4" VERTICAL GATE FRAME MEMBER - HINGE SIDE ONLY.
- 15. TUBULAR STEEL PEDESTRIAN GATE.
- 16. STEEL WINGS WITH REACH-THROUGH DETERRENT PANELS, EACH SIDE OF GATE.
- 17. 2" x 2" x 1/8 GA. TUBULAR STEEL INTERMEDIATE BRACE WELD BETWEEN GATE FRAME AT HEIGHT OF EXIT BAR.
- 18. 3/16" TRUSS ROD.

NOTES:

- A. ALL CONNECTIONS ARE TO BE CONTINUOUSLY WELDED. REMOVE ALL SLAG AND SPATTER AND GRIND ALL WELDS SMOOTH. ALL TURNING TO HAVE ENDS CLOSED.
- B. PAINT STEEL AND ALL HARDWARE WITH (1) COAT OF ZINC CHROMATE PRIMER AND (2) COATS OF ENAMEL PAINT, COLOR BLACK.

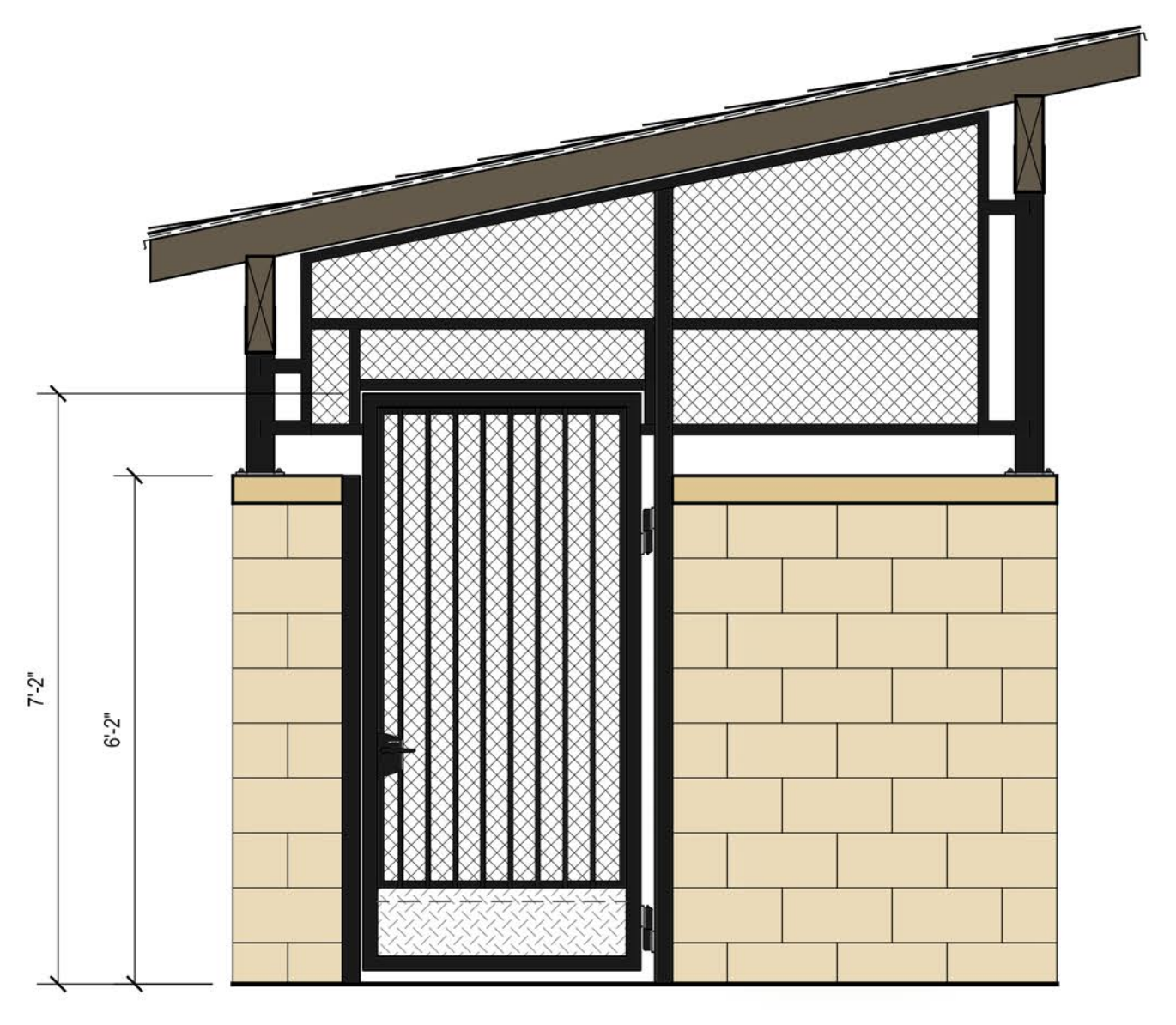
A 30' DBL. SWING TUBULAR STEEL EXIT ONLY SECONDARY VEHICULAR & EVA GATE
 SCALE: 1/2" = 1'-0"
 REFERENCE NUMBER: REFNOTE

S-CONST-FENCE-TS-108



B TRASH ENCLOSURE - STREET-SIDE ELEVATION
 SCALE: 1/2" = 1'-0"
 REFERENCE NUMBER: REFNOTE

DETAIL-FILE



C TRASH ENCLOSURE - GATE-SIDE ELEVATION
 SCALE: 1/2" = 1'-0"
 REFERENCE NUMBER: REFNOTE

DETAIL-FILE