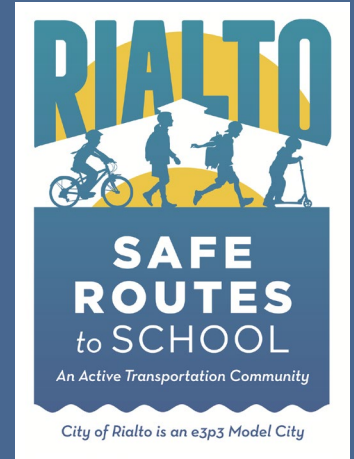


BEMIS ELEMENTARY

SCHOOL SITE ASSESSMENT



BEMIS ELEMENTARY SCHOOL SITE ASSESSMENT

The Bemis Elementary School Site Assessment contains school information and school existing conditions findings. These were used to inform and prioritize the listed recommendations, all of which are meant to improve safety and walkability to and from school.

School Details

Address	774 East Etiwanda Ave., Rialto CA 92376
Grades	Pre-Kindergarten – Fifth
2018 Total Enrollment	652

Existing Conditions

School Geographic Position and Drop Off/Pick Up Loop Location

Bemis Elementary School is located within the eastern region of the City of Rialto, CA along Etiwanda Avenue at the intersection of N Eucalyptus Avenue. Bemis Elementary School is approximately 1.40 miles south of Interstate 210 and 3.00 miles west of the 215 Freeway. There is one main pick up and drop off loop located along Etiwanda Avenue, with independent entry and exit driveways that provide access to Bemis Elementary School.

Sidewalk Coverage and Status

Immediately surrounding Bemis Elementary School the sidewalk network is complete (Eucalyptus Avenue, Pepper Avenue, Holly Street, and Etiwanda Avenue.) However, the northwest region does have missing sidewalks in a predominantly residential area between Holly Street and Shamrock Street along Pine Avenue and Encina Avenue. The existing sidewalk condition is good, with a majority of the segments consisting of older narrower sidewalk, but are equally accommodating to all users. All other regions except the northwest region have full sidewalk coverage, with no observed and notable issues that would inhibit a safe walking route to school.

Curb Ramp Coverage – ADA curb ramps

The surrounding street network around Bemis Elementary School does not provide a consistent coverage of curb ramps. A majority of curbs are missing ramps, excluding some observed new additions to key pedestrian crossing locations along Etiwanda Avenue. The overall existing condition of the curb ramp coverage is in a large part lacking consistently in all directions around the campus. The curb ramps that do exist are either modern ADA curb ramps with yellow track pads or an older construction made out of concrete. The new modern ADA yellow traction pad ramps are located along Etiwanda Avenue the school crossings (Chestnut Avenue and at Pepper Avenue.)

Crosswalks (School Crosswalks, Regular Crosswalks, Mid-Block Crossings)

Within the school zone of Bemis Elementary School there are four total school crosswalk intersections along Etiwanda Avenue. No other regular crosswalk or school crosswalks exist besides these four. The school crosswalks are yellow-painted and are located at the following cross streets off Etiwanda Avenue: Pepper Avenue, Chestnut Avenue, Eucalyptus Avenue, and Acacia Avenue. The school crosswalk condition is good and visible, with little observed cosmetic issues, however the condition does still show signs of wear.

School Signage and Flashing Beacon Location

The existing school signage for Bemis Elementary is positioned along Etiwanda Avenue and along Eucalyptus Avenue. There are a total of eight existing school signs posted: three SR4-1 (CA) school speed limit 25 mile per hour signs, two speed feedback flasher signs (Etiwanda Avenue in front of school zone), two SW2-2 (CA) pedestrian crossing warning signs along the Chestnut Avenue crossing, and one S1-1 pedestrian warning sign. The condition of the listed signs is good and seems to be in new condition. There are in ground flashers located at Etiwanda and Chestnut along the yellow-painted school crosswalk.

On Street Parking Restrictions

Surrounding Bemis Elementary School there are few on street parking restrictions that were observed. There are a handful of red curbs that exist on the north side of Etiwanda Avenue in front of the school. These red curbs are located on either side of most driveways that allow access to the Bemis Elementary School parking facilities. No parking restriction signage was observed surrounding Bemis Elementary School.

Bicycle and Pedestrian Detection

There are no existing bicycle detection systems in place around Bemis Elementary School, nor are there any bicycle lanes/routes present. There are no signalized intersections within the school zone, thus there are no pedestrian push

buttons available. None of the all way STOP controlled intersections have pedestrian detection systems available.

Speed Limit, Street Condition, Street Width, and Observed High Speeds

The posted speed limit around Bemis Elementary School is 25 miles per hour within the school zone limit based on the SR4-1 (CA) signs. The surrounding street network does vary in speed with Pepper Avenue posted at 45 mph and Eucalyptus Avenue posted at 40 mph. Pepper Avenue is a four lane arterial and measures at 70 feet curb to curb with a center median lane. A majority of the two lane connector roadways that provide access to Bemis Elementary School are approximately 40 feet wide, curb to curb. The condition of the existing streets is generally good; however some cracking does exist around some curbed areas.

Signalized Intersection Location and All Way STOP Controlled Intersections

The main street that provides access to Bemis Elementary School, Etiwanda Avenue, has four all way STOP controlled intersections. Within the school zone these cross streets to Etiwanda Avenue are: Acacia Avenue, Eucalyptus Avenue, Pepper Avenue, and Meridian Avenue.

School Pavement Markings

Surrounding Bemis Elementary School two yellow-painted school pavement marking exist along Etiwanda Avenue that read "SLOW SCHOOL XING." The condition of both is visible, showing no significant cracking or fire marks. Both school pavement markings are located approaching the Chestnut Avenue and Etiwanda Avenue crosswalk.

Potential Sight Distance Issues and Overgrown Trees/Shrubbery

No sight distance issues were observed around Bemis Elementary School.

Rail Road Crossing Location

There are no rail crossing within the school zone of Bemis Elementary School.

Crossing Guard Location

There is one directly positioned crossing guard for Bemis Elementary School. The crossing guard is positioned at Etiwanda Avenue and Chestnut Avenue in front of the campus.

Violations within ¼ Mile		Total
22450 (a)	Failure to stop at stop sign limit line, crosswalk, or entrance of intersection	33
21802	Failure to stop at stop sign or yield right-of-way at intersection with stop sign	3
22107	Safe turning/lane change	2
21453 (a)	Failure to stop at red traffic signal	0
21453 (c)	Turning against red arrow signal	0
21461 (a)	Failure to obey MUTCD/regulatory sign/signal	0
21950	Failing to yield right-of-way for pedestrian in crosswalk	0
21954 (a)	Pedestrian failing to yield to traffic (not in crosswalk)	0
21955	Jaywalking between two adjacent signalized intersections	0
22101 (d)	Failure to obey turning movement sign/signal	0
22102	Non-intersection U-turn in business district	0
22349 (a)	Speeding (>65mph on highway)	0
22350	Speeding (> reasonably safe speed)	0

Bemis Elementary Cumulative Violations (08/01/2014-07/31/2017) Data provided by Rialto Police Department

Enforcement Recommendations

- Driver Safety Education – multiple agency campaign citywide.
- School District and School Partnerships – Crossing Guard consideration, pedestrian/bicycle safety assembly, and flyer campaign.
- Targeted Police Enforcement – strategic RPD school area operations.
- Neighborhood Speed Watch Program – surrounding school neighborhood.
- Diversion Program – citywide pedestrian and bicycle behavior modification initiative with specific school area overlap.

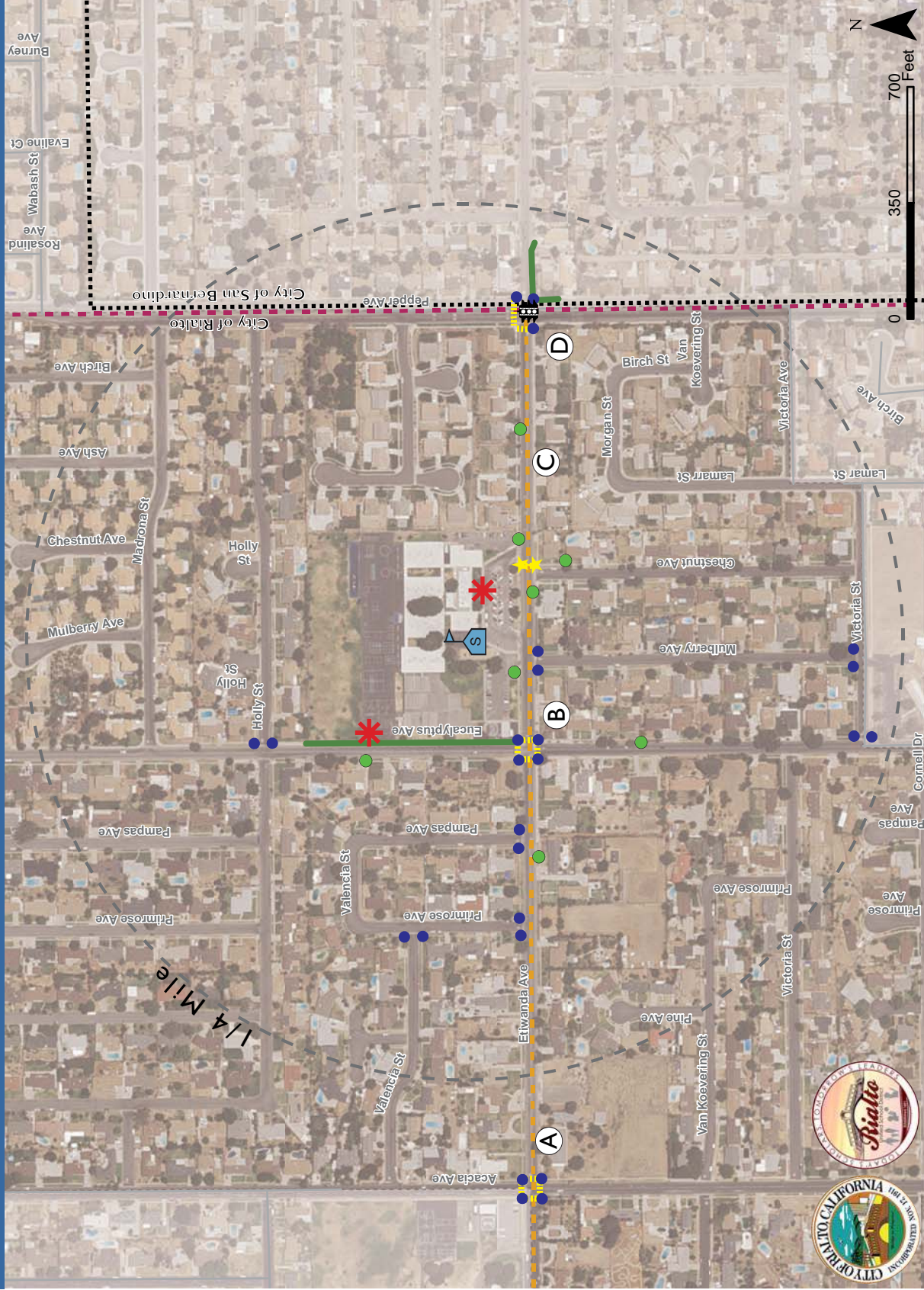
Engineering Recommendations

- Traffic Calming Striping: High Visibility Crosswalks
- Pedestrian Crosswalk Control Devices: Flashing Beacon, *Rapid Flashing Rectangular Beacons (RRFBs), In-Pavement Flashers or Countdown Pedestrian Signal Heads
- Traffic Calming Measure: Raised Crosswalk
- Other engineering and operational improvement items noted in the “Engineering & Operational Improvement” Map, which is provided below.

Non-Infrastructure Recommended Improvements

Site-specific circulation plan	Ensure pick-up/drop-off gates and loops are open for use. Plan should include vehicular, pedestrian, and bicycle accessibility, and primary curbside pick-up and drop-off location. Collaboration between the City of Rialto, Rialto Unified School District, and SRTS team members is recommended. Facilitate proper use of campus parking facility.
Park and walk sites	Encourage parents to park in a designated nearby residential street or park and walk students in. This will help mitigate congestion and pollution within the immediate school area.
Staggered bell schedule	Implement a staggered bell schedule, particularly for school sites within close proximity to each other (in this case, Henry Elementary) to alleviate pick-up/drop-off congestion
RUSD safety officers	Develop a rotational schedule so that all school sites are more regularly monitored during pick-up/drop-off periods.
Pick-up/drop-off supervision	Assign trained school staff and/or volunteers to facilitate pick-up/drop-off supervision through the entire drop-off and pick-up windows. Staff duties shall rotate with proper guidance from head school staff for placement, as well as yearly (or bi-yearly) training.
Bike storage facilities	Enhance campus bicycle/scooter/skateboard storage facilities to encourage use of active transportation. Designate primary bicycle parking locations and provide necessary improvements.
Campus activities and clubs	Establish a campus organization, club, or group that encourages walking and rolling to school. An example would be a running or walking club.

BEMIS ELEMENTARY SCHOOL - ENGINEERING & OPERATIONAL IMPROVEMENTS MAP



LEGEND

- School
- School Access Location
- Proposed
- School Crosswalk
- Sidewalk
- ADA Curb Ramp
- School Signage
- Rectangular Rapid Flashing Beacon
- Signalized Intersection
- Summary Recommendation
- School Attendance Boundary
- Existing
- Proposed
- Class II Bike Lane
- Class III Bike Route

For Class II Bike Lanes, install R81 (CA) and R7-9 signs along lane. For Class III Bike Routes, install R4-11 signs.



SAFE ROUTES to SCHOOL

An Active Transportation Community
City of Rialto is an esp3 Model City

Draft Engineering & Operational Improvement Callouts

April 28, 2017

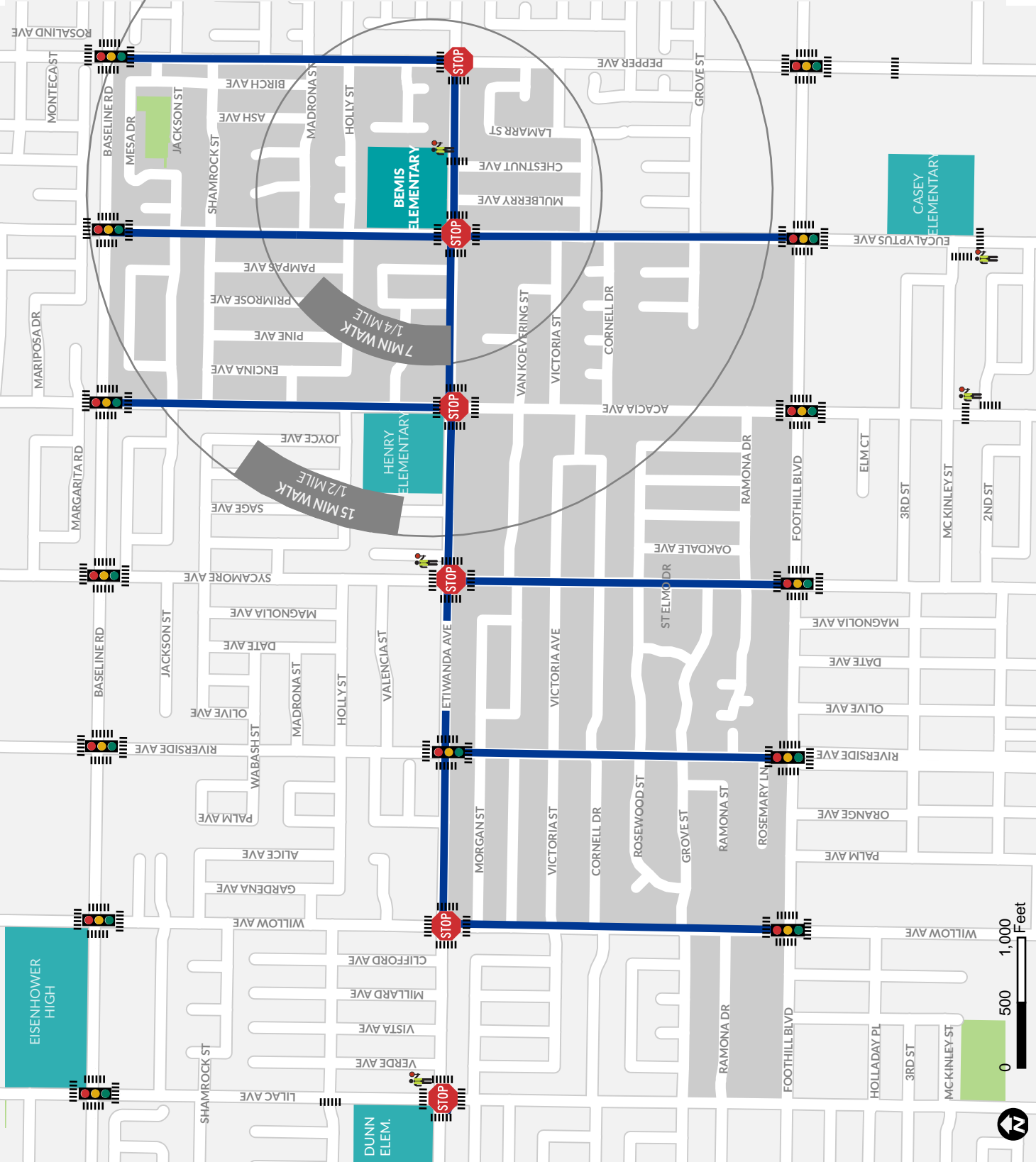
- A** Install bulbouts and curb ramps at all corners of intersection. Install sharrows and R4-11 signs along Etiwanda Avenue to designate existing Class III Bike Route per Etiwanda Corridor Plan. Restripe all existing crosswalks with high visibility paint (ladder style).
- B** Install curb ramps at each corner of the intersection. Restripe all crosswalks with high visibility paint (ladder style). Install SW24-1(CA) Assembly A 500 ft from all approaches at Eucalyptus Avenue and Etiwanda Avenue.
- C** Install R1-5 sign for eastbound and westbound traffic. Install yield lines for eastbound and westbound traffic. Remove and replace existing (not functioning) in road flashers with RFRB's for eastbound and westbound traffic, with advanced warning. Install W16-6P with S1-1 on Chestnut Avenue.
- D** Install traffic signal at intersection, pending passed signal warrant. Install curb ramps at intersection. Restripe existing crosswalks with high visibility paint (ladder style). Install sidewalk leading to southeast corner of intersection.

- Install curb ramps at various locations.

General Note: Stop lines within the school zone to be restriped and placed a minimum of 4 ft before the crosswalk at controlled intersections.

BEMIS ELEMENTARY

SUGGESTED WALKING ROUTES TO SCHOOL



LEGEND

- Crosswalk
- All-Way Stop
- Crossing Guard Location
- Traffic Signal
- School Attendance Area
- School Campus
- Park
- Suggested Walking Route

HOW TO USE THIS MAP

This suggested route to school map is intended to encourage adults and students to walk to school. Adults are responsible for choosing the most appropriate option based on their knowledge of the local area and the skill level of their student.

Recommended routes are based on routes currently used by students, the relative presence of quality sidewalks, and safe crosswalks.

The City of Rialto does not guarantee the safety of these routes and is not liable for injuries or damages.

