

PLANT PALETTE:

TREES & VINES

- MULTI-TRUNK SPECIMEN TREE**
 - Quercus agrifolia* • Live Oak
- LARGE DECIDUOUS CANOPY TREE**
 - Platanus racemosa* • California Sycamore
- INTERIOR STREET TREES**
 - Hymenosporum flavum* • Sweetshade Tree
 - Lophostemon confertus* • Brisbane Box
 - Magnolia grandiflora* 'St. Mary' • Southern Magnolia
 - Olea europaea* 'Wilsonii' (Fruitless) • Fruitless Olive Tree
 - Quercus suber* • Cork Oak
- UPRIGHT MOTOR COURT CANOPY TREE**
 - Liriodendron t.* 'Arnold' • Tulip Tree
 - Melaleuca linariifolia* • Flax Leaf Paperbark
 - Pyrus c.* 'Capital' • Callery Pear

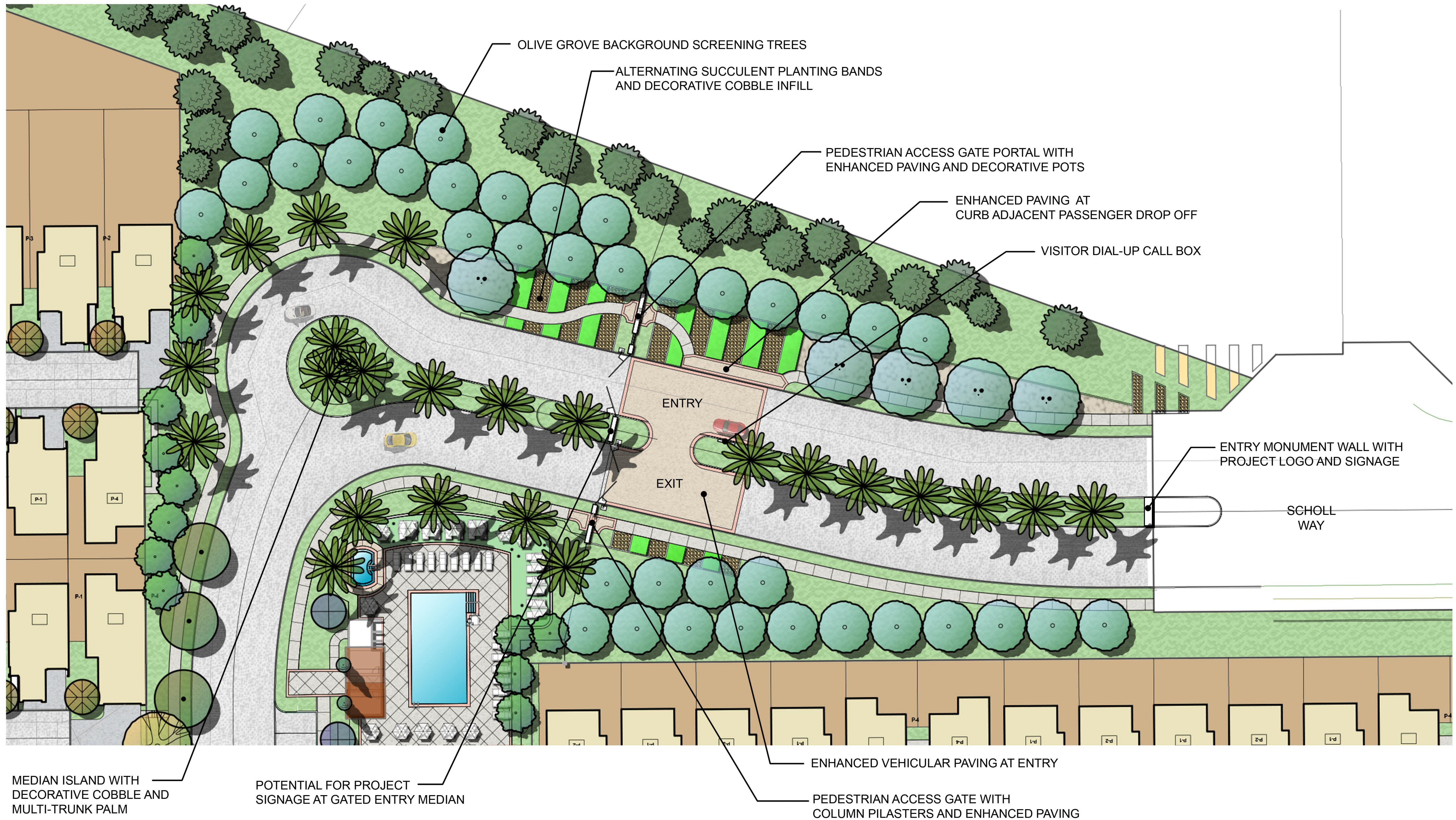
- FLOWERING ACCENT TREE**
 - Cercis occidentalis* • Western Redbud
 - Lagerstroemia indica* 'Miami' • Miami Crape Myrtle
- UPRIGHT EVERGREEN CANOPY TREE**
 - Callistemon viminalis* • Weeping Bottlebrush
 - Podocarpus henkeli* • Long-Leafed Yellowwood
- EVERGREEN COLUMNAR TREE**
 - Cupressus s.* 'Monshel' • Tiny Tower
- PINE TREE**
 - Pinus eldarica* • Afghan Pine
- STREET TREES (LINDEN STREET)**
 - Melaleuca quinquenervia* • Cajeput Tree
 - Ulmus parvifolia* 'True Green' • True Green Chinese Elm

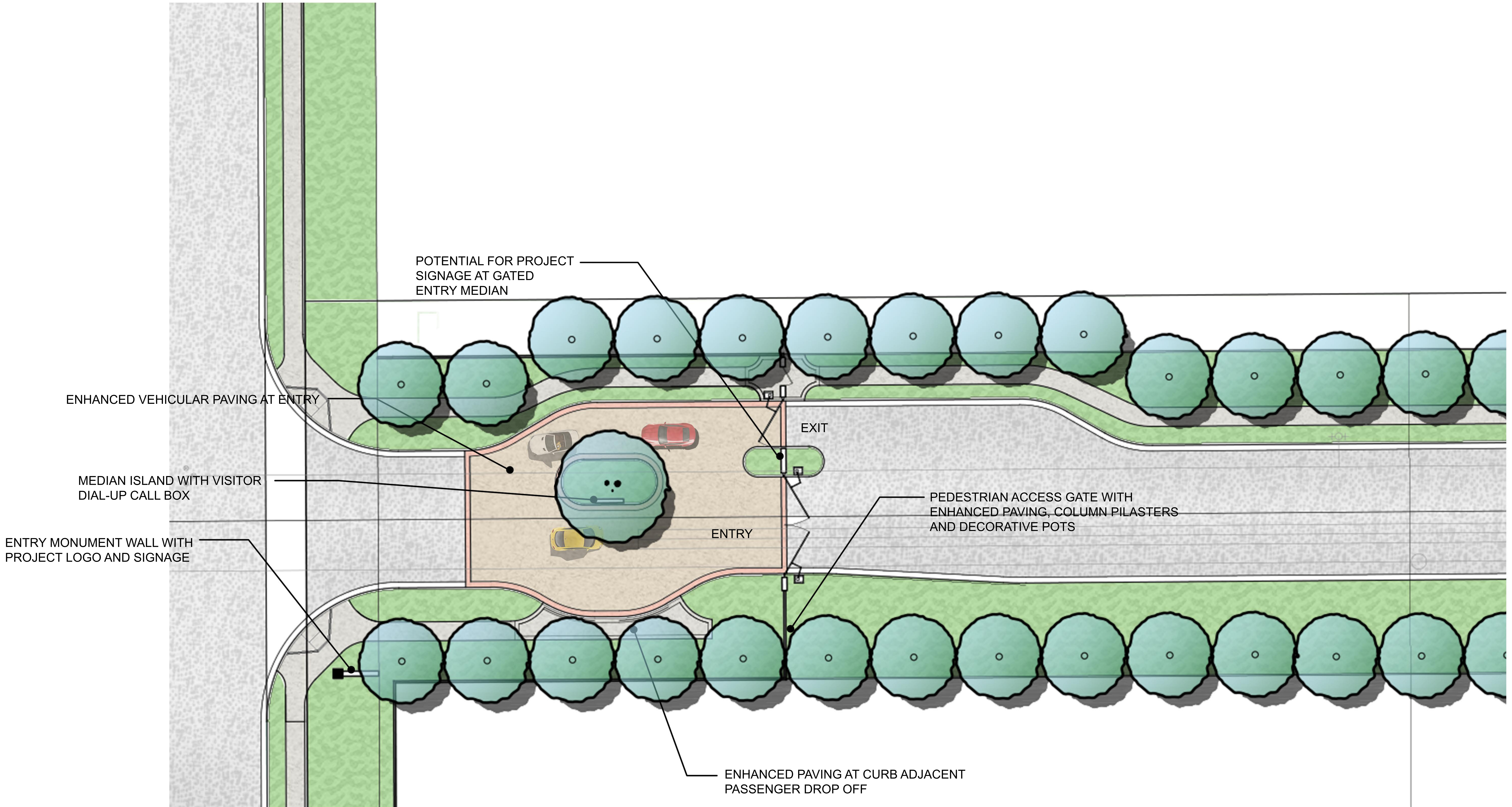
SHRUBS AND GROUNDCOVER

- TALL EVERGREEN UPRIGHT**
 - Podocarpus e.* 'Icee Blue'
 - Podocarpus m.* 'Maki'
 - Dodonea v.* 'Purpurea'
- BACKGROUND**
 - Arbutus unedo* 'Compacta'
 - Callistemon* 'Little John'
 - Olea e.* 'Little Ollie'
 - Rhamnus c.* 'Mound San Bruno'
- MIDGROUND**
 - Lantana montevidensis* • Trailing Lantana
 - Leptospermum s.* 'Gaiety Girl'
 - Penstemon centranthifolius* • New Zealand Tea Tree
 - Rosa floribunda* 'Iceberg Pink' • Scarlet Bugler
 - Rosmarinus o.* 'Tuscan Blue'
 - Salvia* 'Mrs. Beard' • Pink Iceberg Rose
- FOREGROUND**
 - Achillea x* 'Moonshine'
 - Baccharis pilularis* 'Pigeon Point'
 - Bouteloua gracilis* • Yarrow
 - Epilobium* 'Everetts' Chocic' • Coyote Bush
 - Dalea gregii* • Blue Grama
 - Rosmarinus o.* 'Huntington Carpet'
 - Salvia o.* 'Tricolor'
 - Sedum rupestre* 'Angelina'
- SUCCULENTS**
 - Aloe* 'Blue Elf'
 - Aloe striata* • Aloe
 - Bulbine frutescens* 'Hallmark'
 - Echeveria* 'After Glow'
 - Sedum rupestre* 'Angelina'

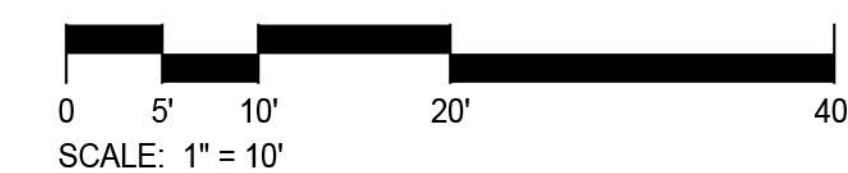
FEATURE LEGEND:

- ① 'Renaissance' Primary Vehicular and Pedestrian Gate Entries from Linden Avenue. By Others. Per Phase I.
- ② Tubular Steel View Fence.
- ③ Corner Pilaster.
- ④ 6' High Single Side Public View Split-Face Block Wall.
- ⑤ 6' High Vinyl Privacy Fence.
- ⑥ 3' Wide Private Residence Entry Concrete Path.
- ⑦ 4' Wide Shared Concrete Path.
- ⑧ Planter Finger within Motor-Court.
- ⑨ Existing Secondary Residence Vehicular & EVA Gate from Linden Avenue.
- ⑩ Pedestrian Entry Access Gates. Both Sides.
- ⑪ Drainage. Per Civil Engineer's Plans.
- ⑫ Existing Adjacent Property Block Wall.
- ⑬ Compacted and Stabilized Decomposed Granite Parkway Pass Through and Tree Pit in 6" Concrete Header.
- ⑭ Fire Hydrant. Per Civil Engineer's Plans.
- ⑮ Street Parking. Per Civil Engineer's Plans.
- ⑯ 5' Wide Concrete Sidewalk.
- ⑰ Bench Seating Area at Terminus.
- ⑱ Combination Retaining and 6' High Block Wall.
- ⑲ Curb Ramps. Per Civil Engineer's Plans.
- ⑳ Low Retaining Wall Per Phase I Plans. By Others.
- ㉑ Storm Drain Structure. Per Civil Engineer's Plans.
- ㉒ Concrete Flare Out for Connection to Phase I Concrete Sidewalk.
- ㉓ Combination 6' Wide Stabilized and Compacted Decomposed Granite and 6' Wide Concrete Multi-Use Per Civil Engineer's Plan.
- ㉔ Stabilized and Compacted Decomposed Granite Layer with Landscape Boulders in 6" Curb.
- ㉕ Bench seating with enhanced concrete paving.
- ㉖ Mortared cobble paving.
- ㉗ Low wall seating at enhanced concrete paving.
- ㉘ Grasspave2 EVA with Removable lockable bollards.
- ㉙ Pedestrian Walkway and Gated Access/Connection to adjacent commercial Site.
- ㉚ Trash Enclosure.





LEWIS RENAISSANCE II
 MASTER PLANNED RESIDENTIAL COMMUNITY - SECONDARY ENTRY ENLARGEMENT
 RIALTO, CALIFORNIA



SCALE: 1" = 10'
 DATE: MAY 2022
 ADG JOB # 2120



