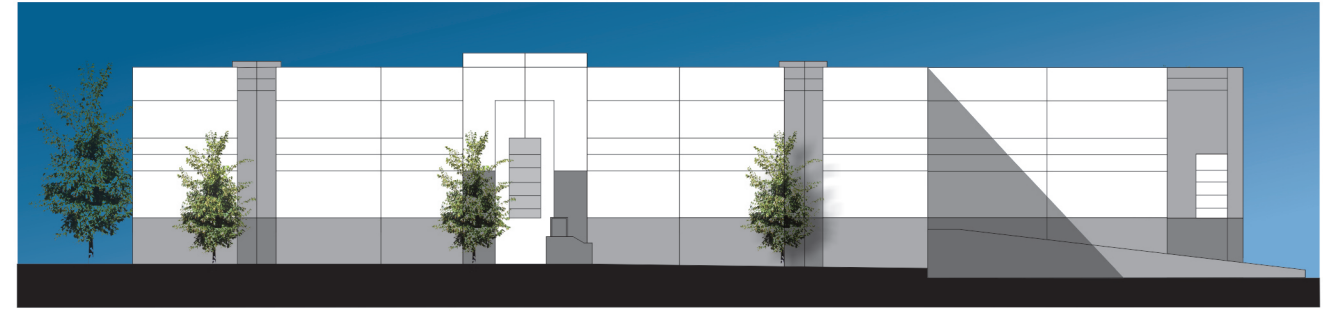
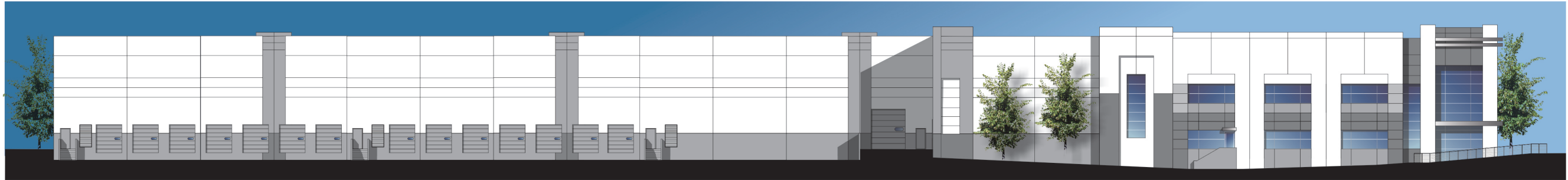


BASELINE - SOUTH ELEVATION



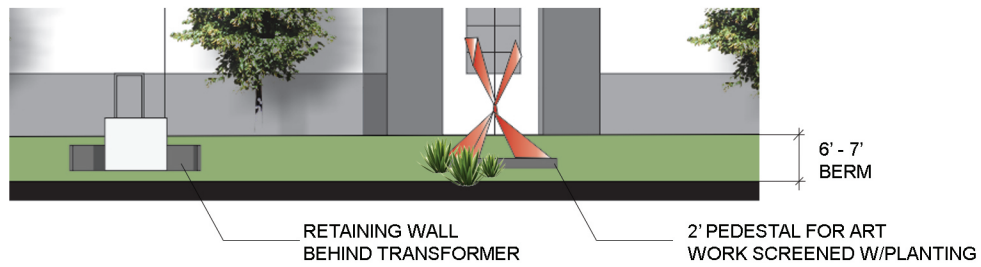
NORTH ELEVATION



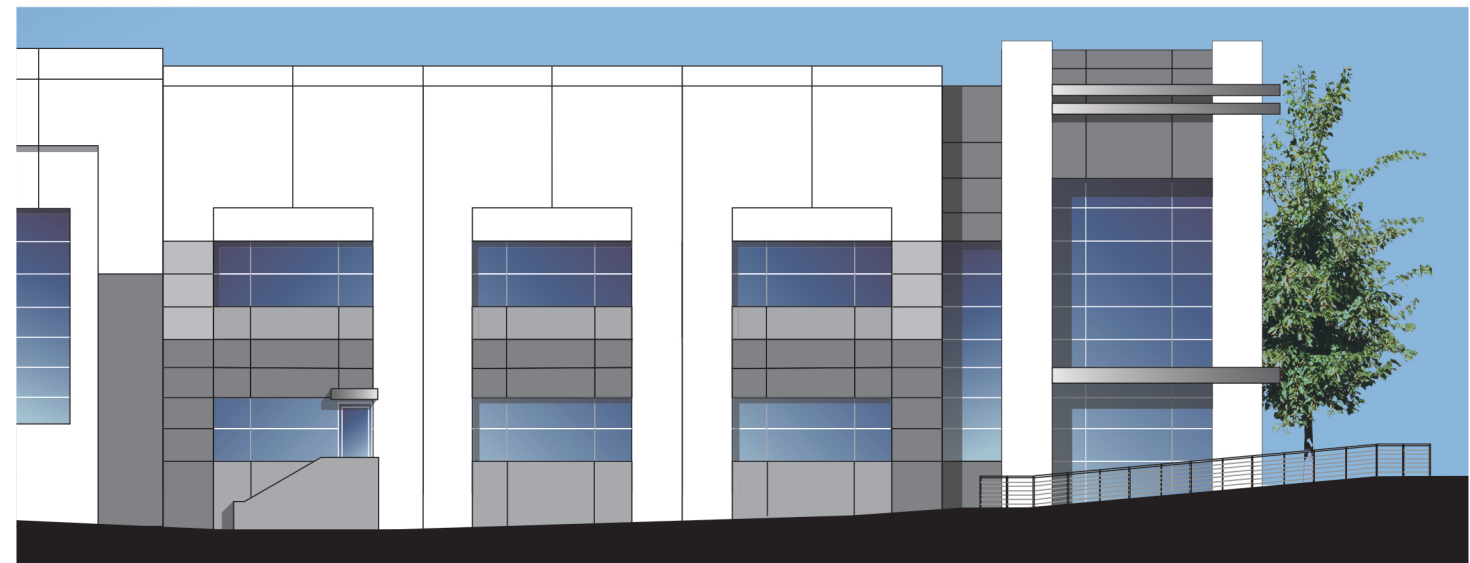
WEST ELEVATION



EAST ELEVATION



ENLARGED VIEW OF SOUTH ELEVATION



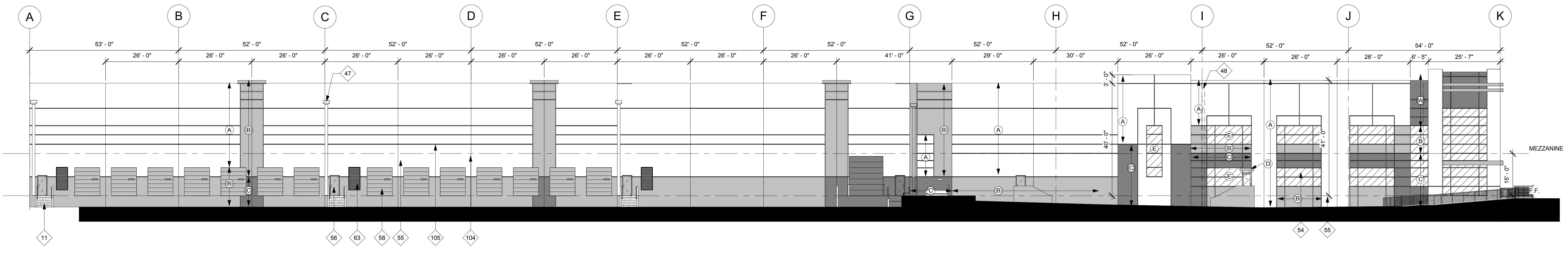
ENLARGED VIEW @ OFFICE CORNER



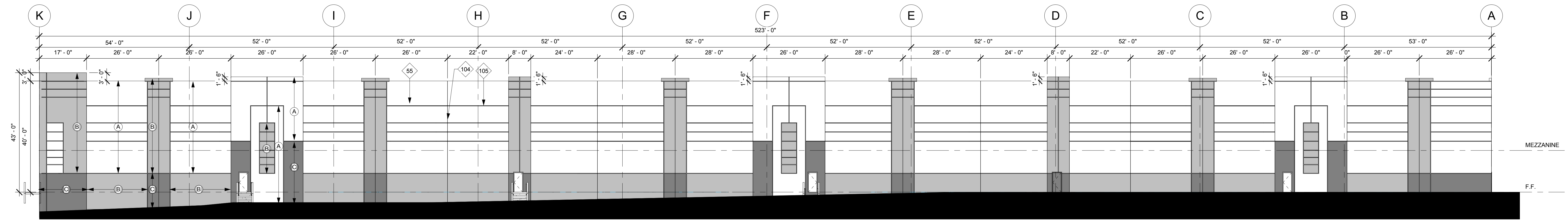
HERDMAN
ARCHITECTURE + DESIGN

MARK BACHLI
BASELINE - RIALTO, CA

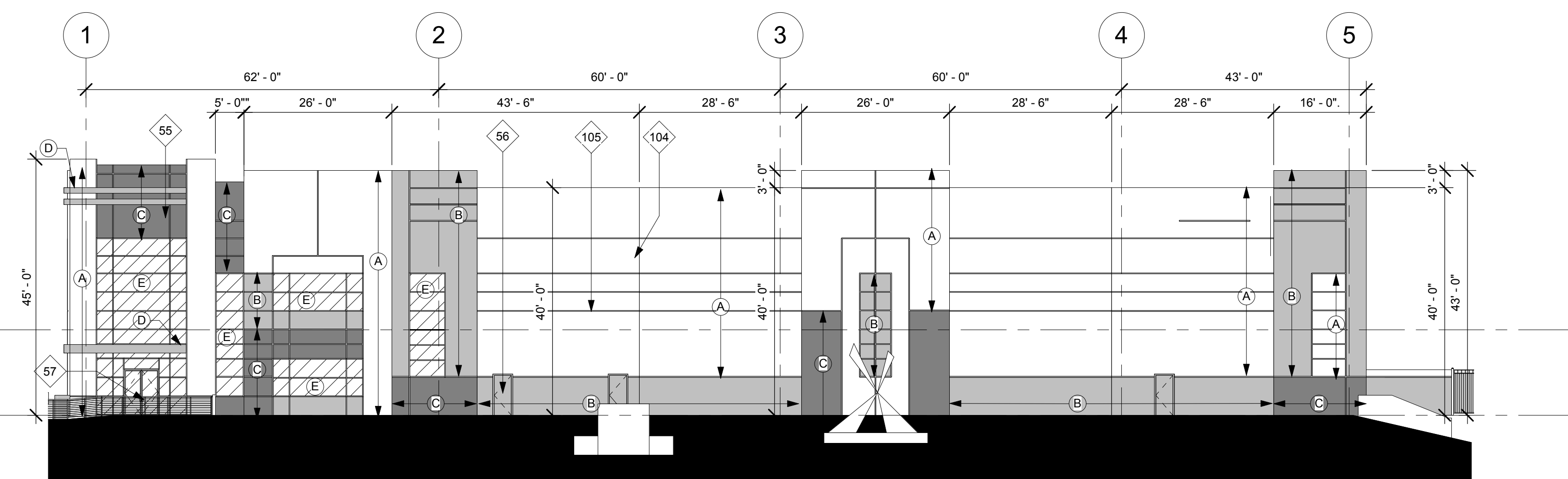
06.19.2018
H-A+D JOB NO: A17-2093



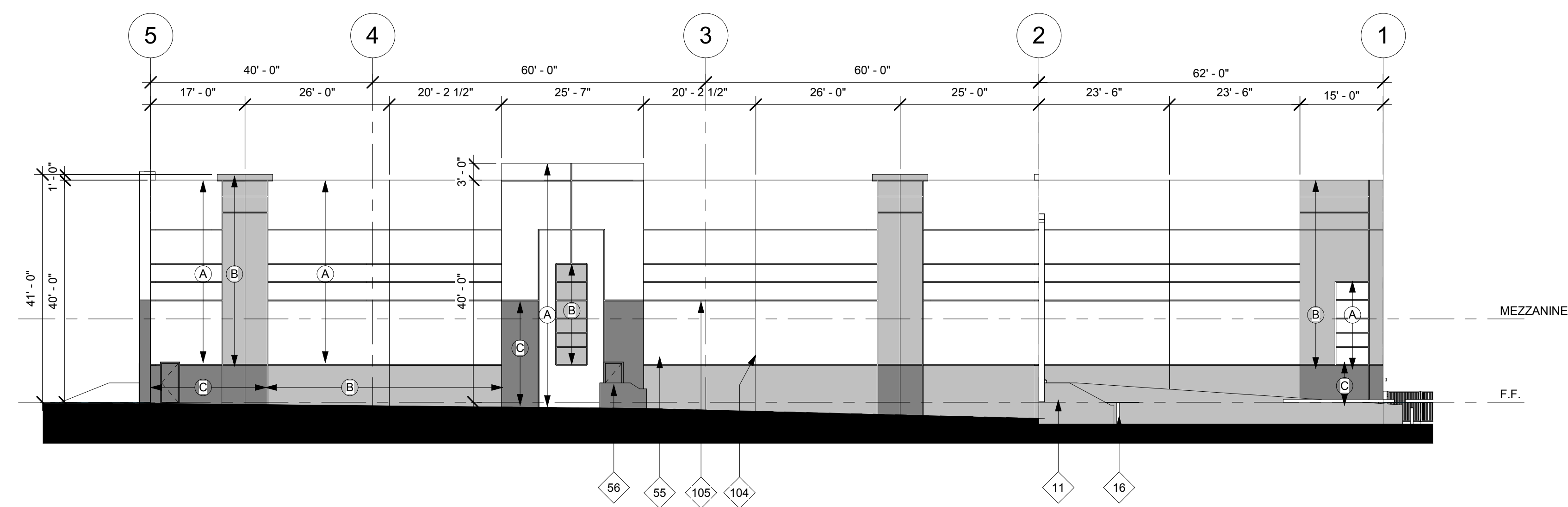
1 PROPOSED WEST ELEVATION
 1/16" = 1'-0"



2 PROPOSED EAST ELEVATION
 1/16" = 1'-0"



3 PROPOSED SOUTH ELEVATION
 1/16" = 1'-0"



4 PROPOSED NORTH ELEVATION
 1/16" = 1'-0"

KEYNOTES	
11	EXTERIOR CONCRETE STAIR W/CONCRETE WALLS. WALLS & RAILINGS PAINTED PER EXTERIOR COLOR SCHEDULE. REFER TO CIVIL AND STRUCTURAL DRAWINGS
16	PROTECTIVE METAL BOLLARDS, CONCRETE FILLED, PAINTED, TYP.
47	EXTERIOR METAL DOWNSPOUT AND OVERFLOW SCUPPERS PAINTED TO MATCH BUILDING. REFER TO PLUMBING PLANS FOR MINIMUM SCUPPER OPENINGS ALLOWABLE PER CODE.
48	INTERIOR ROOF DRAIN AND INTERIOR OVERFLOW DRAIN.
54	STOREFRONT. SEE ELEVATIONS & EXTERIOR COLOR SCHEDULE. STORE FRONT TO BE DESIGNED TO RESIST WIND LOAD AS REQUIRED BY BUILDING CODES AND LOCAL JURISDICTION. DESIGN OF STOREFRONT FRAMING SYSTEM AND STRUCTURAL CALCULATIONS TO BE DESIGN BUILT BY G.C. AND UNDER DEFERRED SUBMITTAL.
55	CONCRETE TILT-UP PANEL, TYP. PAINTED, SEE EXTERIOR COLOR SCHEDULE. REFER TO ELEVATIONS AND 'S' DRAWINGS FOR ADDITIONAL INFORMATION.
56	EXTERIOR MAN DOOR 3'X7', HOLLOW METAL, PAINTED, SEE EXTERIOR COLOR SCHEDULE & DOOR SCHEDULE FOR ADDITIONAL INFO.
57	EXTERIOR STOREFRONT DOOR. SEE EXTERIOR COLOR SCHEDULE & DOOR SCHEDULE FOR ADDITIONAL INFO.
58	DOCK-HI LOADING DOOR, 9'X10', WITH VISION GLAZING PRE FINISHED BY MANUFACTURER PER COLOR SCHEDULE.
63	AIR INTAKE LOUVER. PAINT TO MATCH BUILDING WALL. TYP. SIZE VERTICAL 4'X 6'. PROVIDE BIRD SCREEN, FILTER AND BURGLAR BARS.
104	PANEL JOINT, TYP.
105	2" DECORATIVE CONCRETE REVEAL WITH CHAMFERED EDGES, TYP.

GLAZING LEGEND	
VISION GLAZING:	
NON VISION GLAZING:	
TEMPERED:	

NOTE: REFER TO ELEVATIONS FOR TEMPERED GLAZING LOCATIONS.

NON VISION GLAZING NOTES:

- SINGLE PANE GLAZING PAINT FACE OF CONCRETE PANEL BEHIND BLACK. NO COATING REQUIRED.
- PROVIDE BREATHABLE MULLION SYSTEM @ NON-VISION GLAZING SECTIONS. NO HOLES REQUIRED IN CONCRETE.
- PROVIDE SHADE CLOTH BEHIND GLASS IN AREAS INTENDED TO BE NON-VISION WHEN THERE IS NO SPANDREL CONCRETE. TENSARTE MIRAFLEX 140N 12.5' X 360' FILTER FABRIC

TEMPERED GLAZING NOTES:

- IN OPERABLE DOORS, WINDOWS AND WITHIN 18" OF WALKING SURFACE TO BE TEMPERED.

EXTERIOR COLOR SCHEDULE	
(A)	WHITE EXTERIOR PAINT COLOR: SW7014 EIDER WHITE
(B)	GREY EXTERIOR PAINT COLOR: SW9170 ACIER
(C)	GREY EXTERIOR PAINT COLOR: SW7669 SUMMIT GRAY
(D)	CLEAR ANODIZED DECORATIVE METAL BROW
(E)	STOREFRONT MEDIUM PERFORMANCE BLUE REFLECTIVE GLAZING & CLEAR ANODIZED MULLIONS

TYP. PAINT NOTES:
 PAINT MAN DOORS, GUARD WALLS, RAMP WALLS, STAIR WALLS, GUARD RAILS, ROOF DRAINS, AND LOUVERS TO MATCH ADJACENT BUILDING WALL U.I.N.O.

TRUCK DOORS TO BE PRE-FINISHED BY MANUFACTURER IN WHITE FINISH



HERDMAN
 ARCHITECTURE + DESIGN
 A17-2093
 5/31/2018

EXTERIOR
 ELEVATIONS
A4