

Veolia/RWS

Monthly Operations Report

July 2025

Reporting period May 2025



RIALTO
CUSTOMER SERVICE & REVENUE
MONTHLY OPERATIONS REPORT

Reporting Period:

May 2025

Prepared for: Rialto Water Services

Prepared by: Veolia Water West Operating Services



RIALTO WATER

MONTHLY OPERATIONS REPORT

Reporting Period:

May 2025

Prepared for: Rialto Water Services

Prepared by: Veolia Water West Operating Services

RIALTO WATER

OPERATIONS AND MAINTENANCE REPORT

Contents

I.	EXECUTIVE SUMMARY	3
A.	Water Production Totals	4
B.	Static Water Levels	6
II.	REGULATORY	7
A.	Regulatory Submittals	7
B.	Sample Site Location Results	8
C.	Violations	10
D.	Source Water Total Dissolved Solids (TDS)	10
III.	HEALTH AND SAFETY	10
A.	Monthly Safety Program Overview	10
IV.	CHEMICAL USE	10
V.	ELECTRICAL USE	11
VI.	WATER QUALITY COMPLAINTS	11
VII.	OPERATIONS UPDATE	11
A.	Operational Wells	12
B.	Valve Activity	12
C.	Hydrant Flushing	12
D.	Sanitary Survey	13
VIII.	ASSET MANAGEMENT	13
A.	Main Breaks, Service Leaks, Adverse Water Quality and Health/Safety Issues	13
B.	Major Equipment and/or Machinery Outages	13
IX.	RAINFALL TOTALS	14

RIALTO WATER

MONTHLY OPERATIONS REPORT

I. EXECUTIVE SUMMARY

Highlights of this month's Water O&M report include the following:

- The water distribution network achieved compliance with all permit requirements.
- No sample anomalies that require secondary sampling.
- No significant issues with water availability. The purchasing of water remained consistent and daily equalization tanks levels remained at anticipated volume for customer availability.
- The Preventative Maintenance Program, as well as Valve Exercising, continues to identify areas of focus for our Routine Repair and Replacement.

A. Water Production Totals

Total water delivered into the Rialto system this month was 950.62 acre-feet. 746.36 acre-feet was delivered into the system from the groundwater wells (City 4A production is included in the well total). 93.56 acre-feet was delivered via the BLF transmission system (City 4A production has been deducted). 110.70 acre-feet came from the OPRTP.

MAY 2025 DAILY PRODUCTION TOTALS IN ACRE FEET											
							Delivered Via BLF				
							City 4A	Purchased			
DATE	Chino 2	City 2	Rialto 3	Rialto 5	Miro 3	EW-1	City 4A	BOOSTER 6-9	Cactus ¹	OPRIP ²	TOTAL ³
5/1/25	5.23	1.53	4.80	0.00	0.00	5.96	3.25	2.66	6.44	4.10	30.71
5/2/25	5.39	0.00	4.80	0.00	0.00	5.98	4.29	2.80	9.81	4.36	33.14
5/3/25	5.12	0.00	4.52	0.00	0.00	5.98	8.67	0.00	6.94	4.15	26.71
5/4/25	5.92	0.00	4.96	0.00	0.00	6.10	3.04	3.17	3.21	4.97	28.33
5/5/25	5.51	0.00	5.17	0.00	0.00	6.20	2.41	0.53	3.86	3.24	24.50
5/6/25	4.87	0.00	6.24	0.00	0.00	7.20	4.20	2.96	3.93	3.14	28.34
5/7/25	6.17	0.00	3.49	0.00	0.00	5.56	2.50	0.51	4.64	4.73	25.10
5/8/25	3.81	0.00	3.15	0.00	0.00	5.35	0.87	0.00	9.26	3.79	25.35
5/9/25	5.21	0.00	5.76	0.00	0.00	5.80	8.95	2.80	5.95	4.17	29.69
5/10/25	6.20	0.00	5.03	0.00	0.00	6.60	9.40	2.25	12.16	3.87	36.10
5/11/25	4.34	0.00	4.96	0.00	0.00	5.66	9.83	5.16	4.91	5.11	30.14
5/12/25	6.34	0.00	4.71	0.00	0.00	6.23	7.17	4.77	4.73	3.18	29.95
5/13/25	5.12	0.00	5.69	0.00	0.00	5.72	10.83	9.39	4.38	4.12	34.43
5/14/25	5.00	0.63	5.39	0.00	0.00	5.82	7.18	3.28	2.07	4.13	26.33
5/15/25	4.41	6.12	5.42	0.00	0.00	6.48	0.00	0.11	7.85	3.90	34.29
5/16/25	0.00	8.36	4.66	0.00	3.56	0.98	0.00	0.00	4.59	4.52	26.67
5/17/25	0.00	8.18	5.46	0.00	5.52	0.00	3.55	0.00	4.25	4.07	27.48
5/18/25	0.11	12.50	6.04	0.00	5.93	0.00	0.00	0.00	4.96	4.66	34.20
5/19/25	0.00	7.21	5.99	0.00	5.51	0.00	2.97	0.00	6.08	3.21	28.01
5/20/25	0.00	10.30	6.45	0.00	5.94	0.00	7.04	3.49	5.12	4.32	35.62
5/21/25	0.00	9.86	6.75	0.00	6.54	0.00	2.91	0.71	6.70	3.68	34.24
5/22/25	0.00	8.75	6.40	0.00	6.69	0.00	4.05	0.00	7.90	0.00	29.75
5/23/25	4.22	9.25	5.92	0.00	6.78	0.00	9.03	3.63	4.64	0.54	34.98
5/24/25	4.98	2.91	6.54	0.00	6.79	0.00	3.86	0.00	8.01	3.53	32.77
5/25/25	5.30	7.10	5.46	0.00	3.23	0.00	3.34	0.00	4.94	5.14	31.17
5/26/25	5.62	0.00	7.00	0.00	6.79	0.00	7.68	5.83	4.41	3.99	33.64
5/27/25	6.31	0.00	5.33	0.00	4.47	0.00	7.62	6.84	5.69	2.90	31.54
5/28/25	4.43	0.00	6.24	0.00	5.16	0.00	9.71	7.41	4.61	3.68	31.54
5/29/25	5.14	0.00	6.45	0.00	6.23	0.00	8.67	7.12	5.76	2.52	33.22
5/30/25	5.42	0.00	6.68	0.00	6.74	0.00	10.15	8.94	2.30	2.98	33.06
5/31/25	0.00	8.40	5.74	0.00	5.82	0.00	7.36	0.00	9.64	0.00	29.60
TOTAL	120.17	101.10	171.21	0.00	91.72	91.63	170.53	84.36	179.74	110.70	950.62
MIN	0.00	0.00	3.15	0.00	0.00	0.00	0.00	0.00	2.07	0.00	24.50
MAX	6.34	12.50	7.00	0.00	6.79	7.20	10.83	9.39	12.16	5.14	36.10
AVE	3.88	3.26	5.52	0.00	2.96	2.96	5.50	2.72	5.80	3.57	30.67

¹ Measured at point of connection at Cactus Reservoir site including production from City 4A. Amount may vary compared to billing.

² Measured at point of connection at Cedar Reservoir site. Amount may vary as compared to billing.

³ City 4A is not included in total. It has been accounted for in the Purchased total.

MAY 2025 DAILY BOOSTER TOTALS IN ACRE FEET								
DATE	Booster 1	Booster 2	Booster 3	Booster 4	Booster 5	Booster 6-9	Booster 10	Booster 11
5/1/25	0.00	0.00	1.15	0.00	0.00	2.66	0.00	0.00
5/2/25	0.00	0.00	0.00	0.00	2.03	2.80	0.00	0.00
5/3/25	0.00	0.00	0.00	0.00	5.40	0.00	0.00	0.00
5/4/25	0.00	0.00	1.75	0.00	1.82	3.17	0.00	0.00
5/5/25	0.00	0.00	0.00	0.00	0.00	0.53	0.00	0.00
5/6/25	0.00	0.00	4.20	0.00	0.00	2.96	0.00	0.00
5/7/25	0.00	0.00	0.00	0.00	0.00	0.51	0.00	0.00
5/8/25	0.00	0.00	0.00	0.00	0.00	0.00	0.00	0.00
5/9/25	0.00	0.00	0.00	0.00	4.67	2.80	0.00	0.00
5/10/25	0.00	0.00	0.00	0.00	0.92	2.25	0.00	0.00
5/11/25	0.00	0.00	2.56	0.00	7.06	5.16	0.00	0.00
5/12/25	0.00	0.00	2.61	0.00	0.00	4.77	0.00	0.00
5/13/25	0.00	0.00	5.95	0.00	0.00	9.39	0.00	0.00
5/14/25	0.00	0.00	3.07	0.00	0.00	3.28	0.00	0.00
5/15/25	0.00	0.00	2.71	0.00	0.00	0.11	0.00	0.00
5/16/25	0.00	0.00	1.07	0.00	0.18	0.00	0.00	0.00
5/17/25	0.00	0.00	4.46	0.00	0.00	0.00	0.00	0.00
5/18/25	0.00	0.00	3.75	0.00	0.00	0.00	0.00	0.00
5/19/25	0.00	0.00	5.56	0.00	0.00	0.00	0.00	0.00
5/20/25	0.00	0.00	4.15	0.00	0.00	3.49	0.00	0.00
5/21/25	0.00	0.00	2.48	0.00	0.00	0.71	0.00	0.00
5/22/25	0.00	0.00	5.40	0.00	0.00	0.00	0.00	0.00
5/23/25	0.00	0.00	10.61	0.00	2.34	3.63	0.00	0.00
5/24/25	0.00	0.00	0.09	0.00	0.00	0.00	0.00	0.00
5/25/25	0.00	0.00	2.61	0.00	4.80	0.00	0.00	0.00
5/26/25	0.00	0.00	5.71	0.00	0.00	5.83	0.00	0.00
5/27/25	0.00	0.00	3.98	0.00	0.00	6.84	0.00	0.00
5/28/25	0.00	0.00	7.70	0.00	0.00	7.41	0.00	0.00
5/29/25	0.00	0.00	7.64	0.00	0.00	7.12	0.00	0.00
5/30/25	0.00	0.00	7.09	0.00	0.00	8.94	0.00	0.00
5/31/25	0.00	0.00	0.00	0.00	0.00	0.00	0.00	0.00
TOTAL	0.00	0.00	96.30	0.00	29.22	84.36	0.00	0.00
MIN	0.00	0.00	0.00	0.00	0.00	0.00	0.00	0.00
MAX	0.00	0.00	10.61	0.00	7.06	9.39	0.00	0.00
AVE	0.00	0.00	3.11	0.00	0.94	2.72	0.00	0.00

B. Static Water Levels

All City of Rialto wells are sounded each month, both active and inactive well sites. Depth-to-water is measured from the well head to the static water surface. Increases in depth-to-water represent a decrease in static water level.

Depth to Water													
Wells Depth to Pump	Historical Maximum Depth to Water	Jun	Jul	Aug	Sept	Oct	Nov	Dec	Jan	Feb	Mar	Apr	May
Chino # 1 (580 ft) In-active well	429'	414'	414'	412'	411'	411'	411'	410'	412'	414'	414'	413'	413'
Chino # 2 (550 ft)	369'	347'	352'	347'	347'	343'	340'	342'	341'	335'	338'	335'	337'
City # 1 (260 ft)	392'	158'	151'	150'	247'	247'	251'	121'	126'	121'	122'	119'	117'
City # 2 (480 ft)	402'	164'	164'	171'	210'	137'	139'	147'	146'	128'	130'	128'	122'
City # 3 (525 ft) Out of Service	505'	423'	418'	417'	416'	416'	417'	414'	414'	415'	416'	416'	414'
City # 4A (528 ft)	406'	374'	380'	379'	380'	380'	380'	381'	374'	377'	375'	373'	362'
City # 5 (385 ft) In-active well	364'	335'	333'	334'	332'	322'	320'	318'	318'	321'	318'	318'	316'
Rialto # 1 (650 ft) In-active well	588'	571'	571'	571'	571'	553'	552'	561'	555'	571'	569'	565'	563'
Rialto # 2 (550 ft) In-active well	502'	501'	500'	501'	502'	501'	501'	499'	501'	496'	495'	502'	496'
Rialto # 3 (509 ft)	478'	474'	477'	477'	473'	476'	473'	472'	473'	473'	472'	472'	470'
Rialto # 4 (450 ft) In-active well	418'	415'	416'	415'	418'	418'	414'	413'	414'	415'	416'	415'	415'
Rialto # 5 (560 ft)	386'	386'	386'	385'	384'	384'	384'	385'	385'	384'	384'	386'	386'
Rialto Well # 7 In-active well	362'	361'	361'	362'	362'	362'	361'	362'	360'	360'	359'	353'	356'
Miro # 3 (563 ft)	492'	487'	489'	487'	485'	485'	484'	484'	484'	484'	484'	483'	483'
EW-1 (780 ft)	476'	473'	474'	475'	474'	473'	475'	475'	474'	472'	475'	475'	474'

II. REGULATORY

All State of California and public health agency regulatory requirements were met.

A. Regulatory Submittals

- Monthly Summary of Distribution System Coliform Monitoring
- NPDES Discharge Letter
- Conservation SAFER Report

Sample Test Result Standards			
Type of Sampling	Units of Measure	Detectable Limit for Reporting	Maximum Contaminant Level
Total Coliform	A	--	--
E. Coli	A	--	--
Nitrate as N	mg/L	0.20	10
Perchlorate (CLO ₄)	µg/L	1.0	6.0
Total Dissolved Solids	mg/L	--	500
Arsenic	µg/L	2.0	10
Perfluorooctanoic (PFOA)	ng/L	2.0	4
Perfluorooctanesulfonic (PFOS)	ng/L	2.0	4
P= Present A= Absent mg/L = parts per million µg/L = parts per billion ng/L = parts per trillion			

Sample Date 05/14/2025	Sample Site Location Results									
	Chino 2	City 2	City 4A	Rialto 3	Rialto 5	Miro 3	EW-1	BLF Cactus	BLF 6-9	OPRT P
Total Coliform	A	A	A	A	A	A	A	A	A	A
E. Coli	A	A	A	A	A	A	A	A	A	A
Nitrate as N	2.9									
Perchlorate (CLO ₄)	1.4*			5.8*	<1.0	12*	140*			
Total Dissolved Solids	230	170	260	200	180	220	220	300	300	180
Arsenic		5.0								
Perfluorooctanoic (PFOA)	<2.0				5.9					
Perfluorooctanesulfonic (PFOS)	<2.0				<2.0					

*Sample is from the well head so it is before disinfection & treatment. Treatment is performed before it goes into the distribution system. Water going into the distribution system is <1.0 (non-detect).

B. Sample Site Location Results

Rialto Distribution Sample Results						
May 2025						
Sample Location	Free Cl Res (Field)	Total Coliform	E. Coli	Apparent Color	Odor Threshold	Turbidity
CYCLE 1 - 5/07/25	mg/l	P/A	P/A	Color Units	TON	NTU
335 W. Rialto	1.40	A	A			
1228 W. Merrill	1.10	A	A			
256 N. Fillmore	1.00	A	A			
987 W. Grove	1.10	A	A			
978 N. Driftwood	1.00	A	A			
1451 N. Linden	1.00	A	A			
469 W. Jackson	1.10	A	A			
935 E. Mariposa	1.10	A	A			
1000 N. Joyce	1.20	A	A			
766 N. Chestnut	1.10	A	A			
149 W. Victoria	1.00	A	A			
313 E. McKinley	1.10	A	A			
609 E. South	1.10	A	A			
273 E. Alru	1.30	A	A			
1161 S. Lilac	1.10	A	A			
101 E. Valley	1.00	A	A			
CYCLE 2 - 5/13/25	mg/l	P/A	P/A	Color Units	TON	NTU
210 N. Park	1.00	P	A			
101 S. Larch	1.00	A	A			
320 N. Wisteria	1.10	A	A			
861 W. Grove	1.20	A	A			
1168 N. Glenwood	1.00	A	A			
1320 N. Fitzgerald	1.00	A	A			
860 N. Willow	1.20	A	A			
209 E. Cornell	1.10	A	A			
643 E. Margarita	1.20	A	A			
1170 N. Terrace Rd.	1.00	A	A			
681 E. Erwin	1.00	A	A			
402 E. Merrill	1.00	A	A			
261 W. Wilson	1.30	A	A			
532 S. Iris	1.20	A	A			
281 W. Hawthorne	1.20	A	A			
379 W. Valley	1.20	A	A			

Rialto Distribution Sample Results						
May 2025						
Sample Location	Free Cl Res (Field)	Total Coliform	E. Coli	Apparent Color	Odor Threshold	Turbidity
CYCLE 3 - 5/20/25	mg/l	P/A	P/A	Color Units	TON	NTU
236 N. Willow	1.10	A	A	<3.0	1	<0.10
775 E. Foothill	1.10	A	A	<3.0	1	<0.10
878 N. Primrose	1.10	A	A	<3.0	1	<0.10
369 E. Van Koevering	1.10	A	A	<3.0	1	<0.10
274 W. Valencia	1.10	A	A	<3.0	1	<0.10
1566 N. Fillmore	1.10	A	A	<3.0	1	<0.10
932 N. Idyllwild	1.00	A	A	<3.0	1	<0.10
644 N. Smoketree	1.00	A	A	<3.0	1	<0.10
605 W. Rosewood	1.00	A	A	<3.0	1	<0.10
1189 W. Second	1.10	A	A	<3.0	1	<0.10
775 W. Rialto	1.00	A	A	<3.0	1	<0.10
211 E. Wilson	1.10	A	A	<3.0	1	<0.10
595 E. Huff	1.10	A	A	<3.0	1	<0.10
1005 S. Riverside	1.30	A	A	<3.0	1	<0.10
794 S. Verde	1.10	A	A	<3.0	1	0.21
1055 W. Bloomington	1.30	A	A	<3.0	1	0.31
CYCLE 4 - 5/28/25	mg/l	P/A	P/A	Color Units	TON	NTU
375 S. Cactus	1.40	A	A			
101 S. Linden	1.70	A	A			
234 N. Larch	1.20	A	A			
575 N. Driftwood	1.30	A	A			
1355 W. Shamrock	1.10	A	A			
992 N. Yucca	1.20	A	A			
481 W. Cornell	1.00	A	A			
158. E. Shamrock	1.20	A	A			
749 E. Holly	1.10	A	A			
545 E. Victoria	1.30	A	A			
200 N. Sycamore	1.10	A	A			
407 E. Allen	1.30	A	A			
399 E. Montrose	1.00	A	A			
856 S. Orange	1.40	A	A			
911 S. Cactus	1.30	A	A			
220 W. Valley	1.30	A	A			
P/A + Present or Absent						

C. Violations

No violations were received during this reporting period.

D. Source Water Total Dissolved Solids (TDS)

Veolia has a goal of maintaining an acceptable blended TDS level between all its sources. This goal is achieved by shifting production to or from the lowest TDS wells or purchased low TDS water while adhering to the overall water supply strategy and meeting system demands. The TDS was 223 mg/L for the month of May as compared to 218 mg/L in April. The TDS levels are below the secondary maximum contaminant level requirements.

III. HEALTH AND SAFETY

A. Monthly Safety Program Overview

Category	Monthly Statistic
Safety Training Topics	Meter Installation SOP Safety Dashboard Report
Lost Time Incidents, count*	0
Recordable Incidents, count	0
Near Miss Incidents, count	1
Vehicle Incidents, count	0

*A lost time incident has not occurred in the past 4248 days.

IV. CHEMICAL USE

Sodium hypochlorite is the only chemical added to the water system. A total of 2214 gallons of sodium hypochlorite was used in May as compared to 2004 gallons used in April.

V. ELECTRICAL USE

Southern California Edison (SCE) has not provided all of the data for May 2025. We will provide the data as it is received, thus will include yearly usage received to date.

SCE		kWh
Year	Month	Billed Usage
2024	June	629,344
2024	July	550,202
2024	August	650,431
2024	September	562,739
2024	October	529,208
2024	November	266,378
2024	December	247,546
2025	January	427,546
2025	February	268,626
2025	March	261,768
2025	April	425,873
2025	May	425,407

VI. WATER QUALITY COMPLAINTS

No complaints were received during this reporting period.

VII. OPERATIONS UPDATE

The overall operational strategy is to meet the daily water demand. The City of Rialto water system has six operational wells, one of which is owned by the County of San Bernardino and operated by Veolia; Oliver P. Roemer Treatment Plant (OPRTP), which is jointly owned by the City (25%) and West Valley Water District (WVWD); purchased water through the Baseline Feeder (BLF) system from San Bernardino Valley Municipal Water District (SBVMWD); and, if required to meet demand, additional water can be supplied by the City of San Bernardino (CSB) through the BLF for emergency supply only with no guarantee of actual delivery. Water produced from City Well 4A discharges into the BLF and its production is included in deliveries from that shared transmission line when City Well 4A is in service.

The overall pumping strategy is based on adjudicated rights, well availability, remediation requirements, and quality of source, cost to operate, and varying weather conditions. TDS effluent concentrations for the City of Rialto WWTP are taken into consideration when operating the facilities and water sources.

A. Operational Wells

All wells were operational.

B. Valve Activity

On the basis of information collected in 2019, Veolia now has a baseline assessment of all valves and has initiated a new cycle of valve exercising. 37 valves were exercised in the month of May.

Valve Turning Progress	
	Valves Turned
2020	530
2021	340
2022	463
2023	750
2024	379
2025	253

C. Hydrant Flushing

There are 63 hydrant/dead ends that are flushed annually to maintain water quality. 11 flushings were performed in May.

Hydrant/Dead End Flushing Progress	
	2025
January	0
February	0
March	6
April	6
May	11
Total	23
Progress % (37)	

D. Sanitary Survey

DDW performed field site visits on May 22 and August 22, 2024. The results of the sanitary survey were received on September 19, 2024. All minor deficiencies have been corrected and submitted to DDW.

VIII. ASSET MANAGEMENT

The following work orders were completed by Water production staff for the month of May:

- Preventive Maintenance –57
- Corrective Maintenance –0
- Predictive Maintenance –0

4– PMs planned for June 2025

A. Main Breaks, Service Leaks, Adverse Water Quality and Health/Safety Issues

The following work orders were completed by Water distribution staff for the month of May:

- Main line –2
- Service line –3
- Hydrants - 9
- Angle Meter Stop –11
- Meter Box & Lid Replacement –6
- Meter Leaks/ Replacements -16

B. Major Equipment and/or Machinery Outages

All wells were operational.

IX. RAINFALL TOTALS

SEASON	JUL	AUG	SEP	OCT	NOV	DEC	JAN	FEB	MAR	APR	MAY	JUN	TOTAL
2019-20	0.00	0.00	0.00	0.00	0.64	1.52	0.23	0.33	1.18	3.42	0.00	0.00	7.32
2020-21	0.00	0.00	0.00	0.00	0.85	1.02	2.55	0.05	1.13	0.00	0.00	0.00	5.60
2021-22	0.53	0.00	0.00	0.55	0.00	7.27	0.00	0.00	0.77	0.45	0.03	0.00	9.60
2022-23	0.00	0.00	0.24	0.38	2.15	1.80	5.06	4.14	7.73	0.20	0.59	0.00	22.29
2023-24	0.00	2.62	0.00	0.09	0.60	1.18	1.00	10.38	1.87	0.53	0.34	0.00	18.61
2024-25	0.00	0.00	0.00	0.00	0.45	0.00	0.21	3.68	2.47	0.49	0.29		7.59
</													

Table of Contents

I. CUSTOMER SERVICE SUMMARY.....	3
II. CALL CENTER PERFORMANCE.....	3
III. AUTOMATED SERVICES.....	3
IV. CONSUMPTION & BILLING.....	4
A. Consumption.....	4
B. Billing.....	4
V. REVENUE & AGING.....	5
A. Revenue	5
B. Aging	6
C. Bad Debt.....	6
VI. SERVICE ORDERS	7
VII. OTHER ACTIVITIES	7
VIII. REVENUE REPORT	7
A. Revenue Summary.....	7
B. Non Rate Revenue - Extraterritorial Customers.....	7
C. Non-Rate Revenue – Other	8
D. Development Impact Fees.....	8
E. Rialto Basin Water Rights and Leasing	8
F. Payment Collection Method – Fiscal Year to Date.....	10
G. Cash Collections on Behalf of the City of Rialto-Prior Year Comparison.....	10
H. Non-Rate Revenue + Utility Revenue Collections Prior Year Comparison	10
I. Non-Rate Revenue + Utility Revenue Collected Fiscal Year-to-Date.....	11
J. Increase in Cash Collections and Fund Distribution—Prior Year Comparison	11
K. Non-Rate and Extraterritorial Customer Accounts Receivable Aging	12

I. CUSTOMER SERVICE SUMMARY

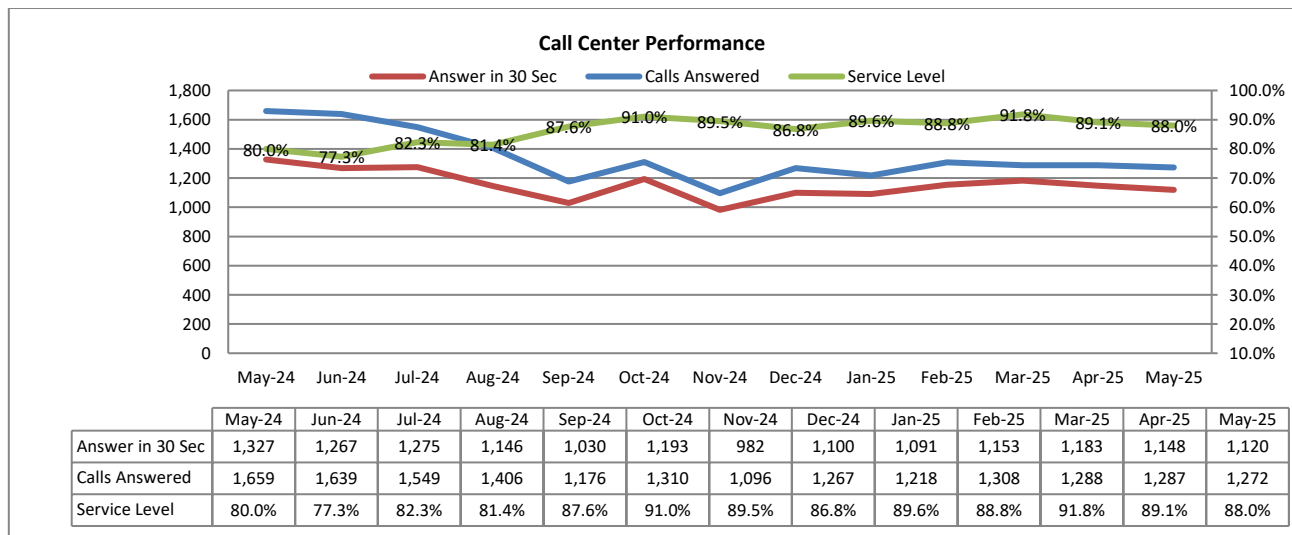
During this reporting month, the Customer Service team provided call service level of 88.0%. Out of 1,272 inbound calls answered 1,120 were answered within the first 30 seconds.

Water consumption has increased by 48.8% when compared against previous month. When compared against last year, consumption has increased by 48.8%. This increased value is due to one no-bill week in the beginning of the May. (~25%)

Sewer revenue has increased by 2.7% compared to the prior month and increased by 9.1% from last year.

II. CALL CENTER PERFORMANCE

During this reporting month, service level was 88.0% with 1,120 out of 1,272 being answered within the first 30 seconds. Overall average wait time was twenty-six (26) seconds.



III. AUTOMATED SERVICES

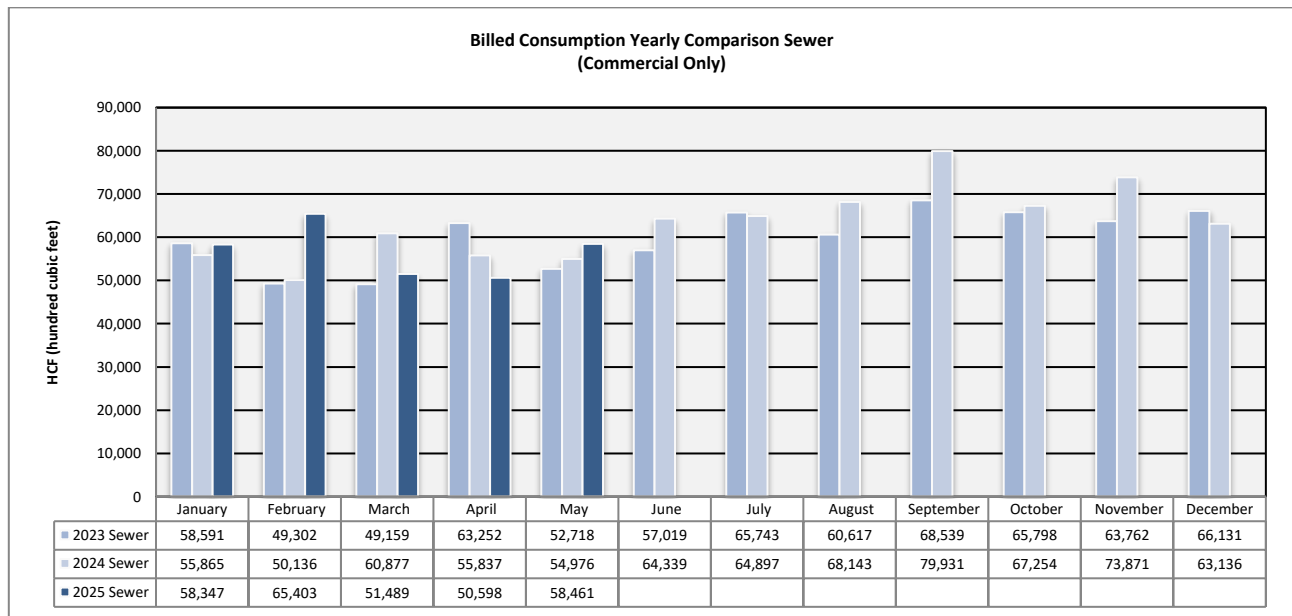
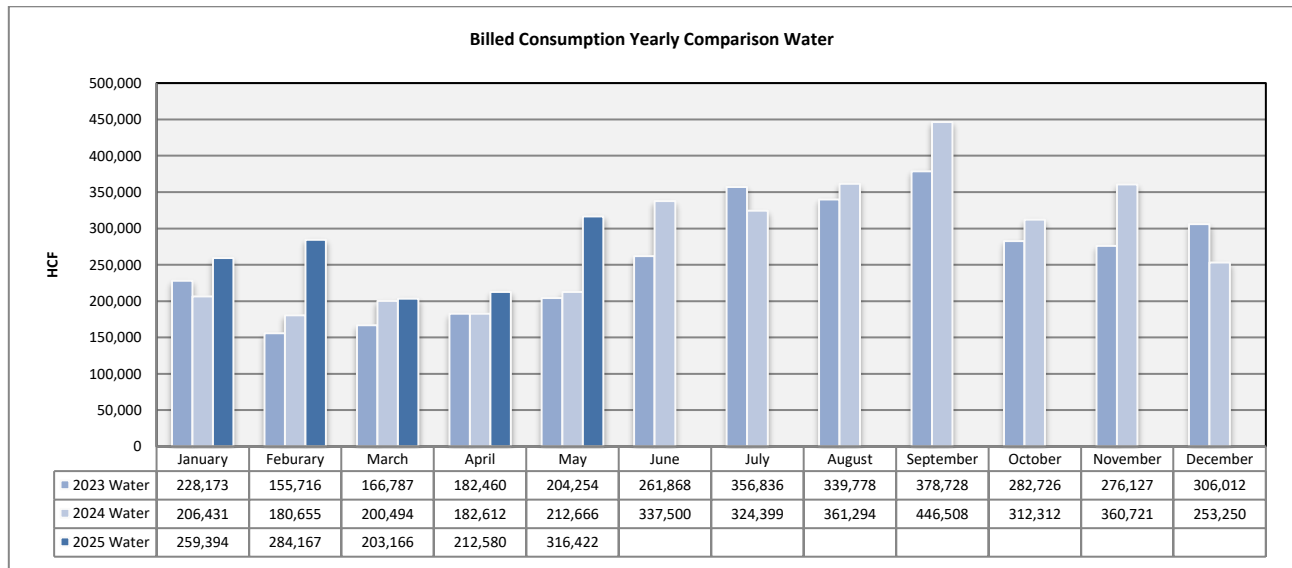
About 22,705 or 55.1% of the rate payers have created log-ins to access their accounts online. Of these customers, with online access, 47.9% have chosen the e-bill option. This e-bill participation is 6.1% increase from May of the prior year.

	May-24	Jun-24	Jul-24	Aug-24	Sep-24	Oct-24	Nov-24	Dec-24	Jan-25	Feb-25	Mar-25	Apr-25	May-25
Number of Bills	22,331	22,372	22,410	22,425	22,470	22,541	22,571	22,575	22,587	22,604	22,657	22,694	22,705
Number of Bill Adjustments (during billing)	16	10	11	9	5	11	9	29	17	10	29	25	15
Automated Over the Phone Payments	2,382	2,058	2,250	2,310	2,050	2,483	2,092	2,436	2,509	2,040	2,509	2,454	2,276
Online Payment	9,126	7,457	9,828	9,302	7,538	9,302	7,804	10,320	9,747	7,676	9,912	9,798	8,434
E-bill Participants	5,654	5,683	5,731	5,770	5,814	5,855	5,922	5,959	5,997	6,031	6,069	5,969	6,000
Auto Pay Participants (New Portal)	4,129	4,165	4,221	4,273	4,278	4,305	4,343	4,367	4,420	4,467	4,536	4,554	4,630
PayNearMe	111	88	114	118	92	95	93	95	108	73	99	97	88

IV. CONSUMPTION & BILLING

A. Consumption

Water consumption has increased by 48.8% when compared against previous month. When compared against last year, consumption has increased by 48.8%. This increased value is due to one no-bill week in the beginning of the May. (~25%)



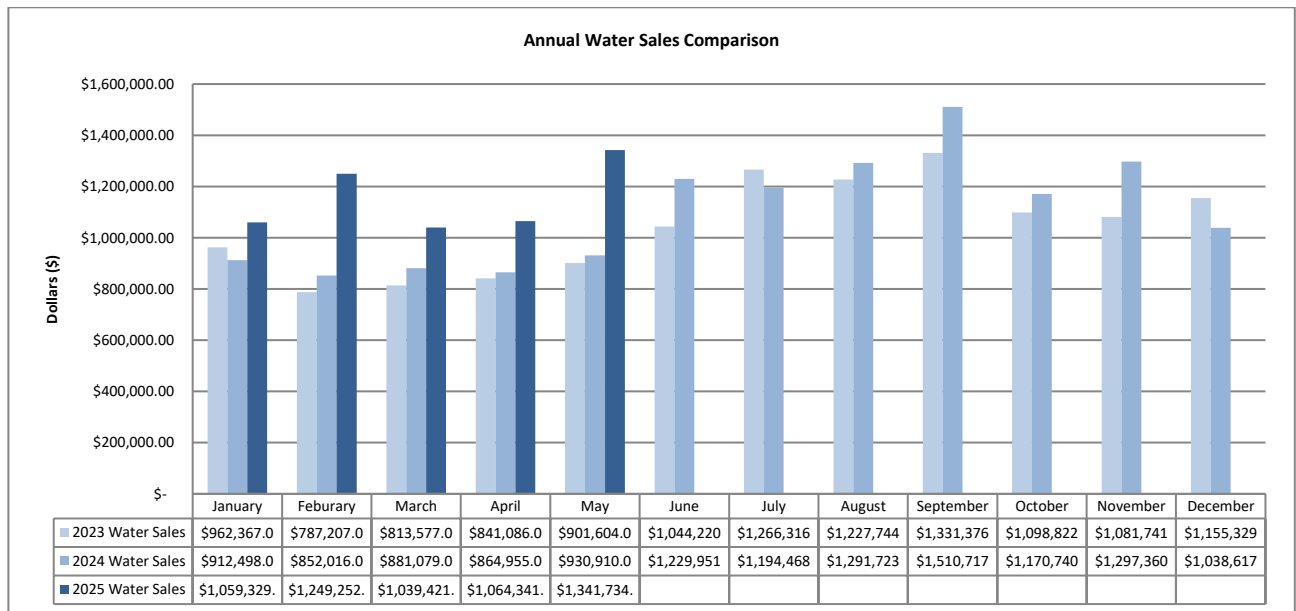
B. Billing

A total of 22,705 bills were mailed or sent out electronically in May. Billing accuracy was 99.9% with fifteen (15) requiring adjustments after bill generation.

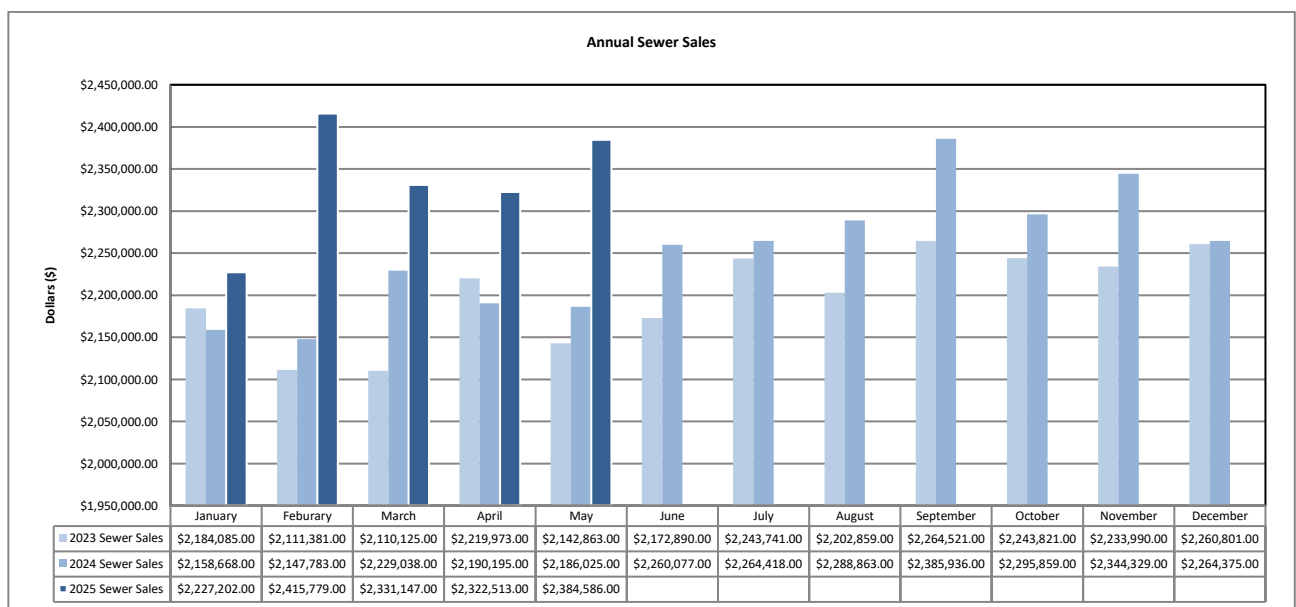
V. REVENUE & AGING

A. Revenue

Water revenue has increased 26.1% when compared against the prior month and increased 44.1% when compared against previous year. Sewer revenue has increased by 2.7% compared to the prior month and increased by 9.1% from last year. Increase of revenue in 2025 versus 2024 is due to rate modifications in January.

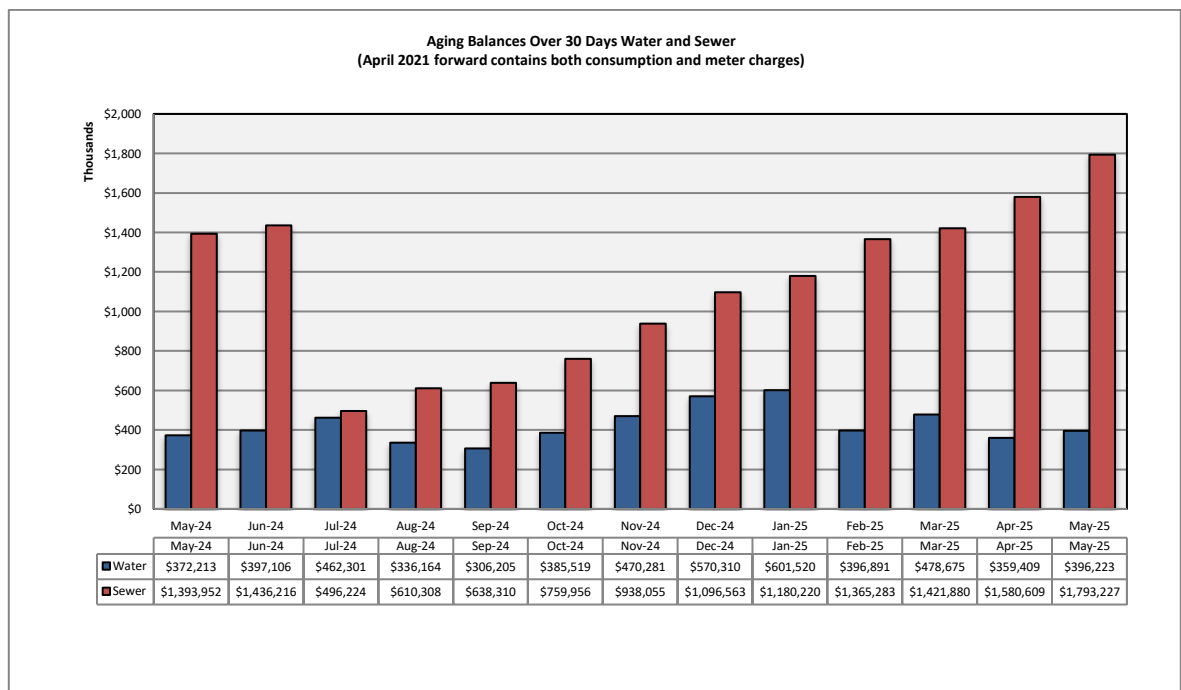
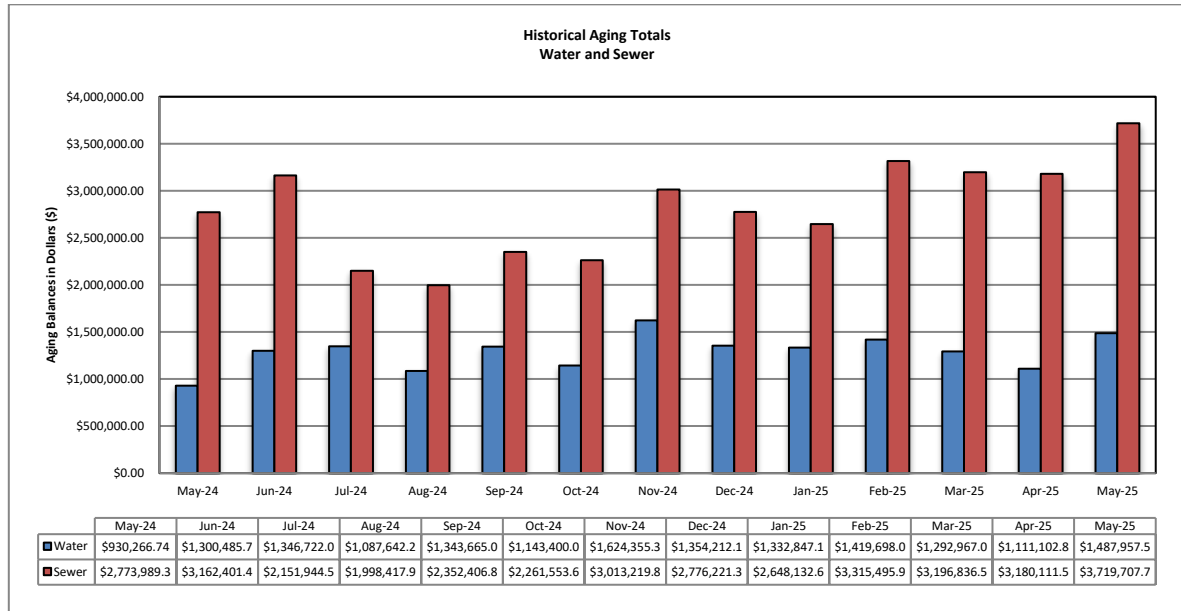


(Please consider the scale of the graph as doubled height does not mean double the amount)



B. Aging

The total aging balance has increased by 21.4%, *see first table below*. For balances >30-days only, water has increased 10.2% and wastewater has increased by 13.5%.



C. Bad Debt

Fifteen (15) accounts were sent to collections for a total amount of \$4,098.08.

VI. SERVICE ORDERS

336 service orders were initiated by the customer service team during the reporting month. Of this total, 67 service orders or 20.0% were due to occupant changes.

199 service orders were initiated to accommodate water disconnection for non-payment and reconnection of water services when customer set up (or reinstate) a payment arrangement with down payment.

VII. OTHER ACTIVITIES

2,004 notice of potential tax roll has been sent out during the month of May. These letters were associated with 1,654 accounts. If property owner is different than account holder, multiple letters are sent out. 80% of these accounts have been tax rolled in 2024.

VIII. REVENUE REPORT

A. Revenue Summary

Cash Revenue is compiled and reconciled to the merchant account on a daily basis. Cash receipts and deposits are made daily and internal controls are reviewed regularly to ensure safeguarding of assets and proper recording of all transactions. Total revenue collected in May 2025 is \$3,525,000 whereas Non-Rate Revenue is \$62,000; Utility Revenue is \$3,413,000 and Tax / Ambulance Revenue at \$50,000.

RWS collects Utility User Taxes and Ambulance Fees on behalf of the City of Rialto. The Utility User Tax (UUT) rates are based on the total billed amount, therefore the collection fluctuates as billed amounts change. The total UUT charges collected in May 2025 and May 2024 are \$45,000 and \$284,000 respectively. The large variance in collection of UUT charges is due to the City exempting UUT charges to the Residential customers beginning January 2025 and December 2025. Ambulance Revenue is also collected on behalf of the City of Rialto totaling \$5,000 in May 2025 and \$6,000 in May 2024.

B. Non Rate Revenue - Extraterritorial Customers

RWS bills the City of Fontana \$133,000 each month for extraterritorial sewer usage.

Colton Unified School District is in agreement with RWS to pay \$5,000 monthly for sewage connections based on enrollment rates provided each school year.

An extraterritorial agreement to provide sewer service was executed between the City of Rialto and the County of San Bernardino—County Service Area 70, Zone BL (Bloomington).

This housing development project generates extraterritorial sewer service revenue of \$20,000 per month.

The City has an agreement with Social Science Services dba Cedar House Life Change Center to provide extraterritorial sewer service providing sewer revenue of about \$5,000 each month.

C. Non-Rate Revenue – Other

Other revenue is generated by leasing space for cell towers to AT&T, which has two leases at \$2,073 and \$1,500. Sprint lease is at a currently contracted rate of \$2,000 each month. Vertical Bridge also provides \$2,400 a month of cell tower generated Revenue.

Rialto Bioenergy Solutions subleased a City property for \$10,750 a month.

The City and San Bernardino Valley Municipal Water District have entered into a Brine Line Capacity Agreement on May 23, 2021. This agreement pertains to the use of its interest in the SARI Line and discharge of certain brine waste to the SARI Line exclusively from the operation of Rialto Bioenergy Facilities within the City's boundaries. The revenue generated in this agreement consists of quarterly rent of \$37,500 along with the Fixed Pipeline Capacity Fee of \$3,300 per month and Fixed Treatment Plant Capacity Fee of \$3,300 per month. In addition, a variable fee of any discharge costs are also billed.

The San Bernardino Valley Water District (SBVWD) reimburses RWS for water conservation programs provided to customers. A quarterly bill is delivered directly by the City.

D. Development Impact Fees

Development Impact Fees ("DIF") are paid to the City of Rialto as various developments are completed in the City. As such, the City of Rialto receives monies from the various developments, which is then distributed to RWS. There was no DIF payment received in May of 2024.

E. Rialto Basin Water Rights and Leasing

A Standby Water Lease Agreement between Fontana Union Water Company and City of Rialto is in effect. For the Water 2023-2024 Water Year, RWS received a payment from San Bernardino County the amount of \$332,624 for Standby Charges and Production Charge.

In addition, the County is also billed annually for Rialto Well #3's summertime electricity costs based on peak usage.

Cash Collections by Payment Method – Rialto Water Services

Payment Method	Description	Transaction Count	MAY 2025	%
Carrier Deposits	Cash deposits prepared per day for transport to US Bank.	21	\$ 123,958	3.48%
Remote Deposits	Scanned batches of checks payments made at the customer service counter	21	664,958	18.68%
EBOX	Batches of electronic customer payments posted to customer accounts at US Bank.	21	284,338	7.99%
PAYMENTUS - IVR / Paymentus / Walk-in Credit Card payment	Customer payments by credit cards and ACH / eCheck payments through an Interactive Voice Response system using a touchtone phone. Payments originated from Merchant online service	11,619	1,725,899	48.48%
Lockbox Deposits	Batches of customer payments mailed in to US Bank's lockbox	21	749,957	21.07%
Pay Near Me	Cash payment service that allows customers to pay at a local 7-Eleven, CVS, Walmart or Family Dollar stores.	86	11,011	0.31%
Total Revenue per Bank			\$ 3,560,122	100.00%
Recon to RUA Recap:				
Adj detailed in RUA			(35,204)	
Prior mo. Correction				
RUA increase in Cash			\$ 3,524,918	

Transaction Counts for Carrier Deposits, Remote Deposits, UB Bill Conc Service (EBOX), and Lockbox Deposits reflect number of batches deposited to the bank. Transaction counts for credit card POS, IVR, and Pay-Near-Me transactions are per number of customer payments. IVR payments are received and process by Paymentus on the day the transactions are made. General ledger are posted and accounted for the following day the payments are processed.

F. Payment Collection Method – Fiscal Year to Date

	Jul 2024	Aug 2024	Sep 2024	Oct 2024	Nov 2024	Dec 2024	Jan 2025	Feb 2025	Mar 2025	Apr 2025	May 2025	Total	%
Carrier Deposits	\$ 122,310	\$ 116,600	\$ 111,287	\$ 121,951	\$ 89,627	\$ 122,268	\$ 120,688	\$ 117,076	\$ 137,735	\$ 134,742	\$ 123,958	\$ 1,318,243	3.06%
Remote Deposits	227,143	953,011	373,642	394,629	613,264	685,915	291,981	1,113,745	471,688	802,083	664,958	\$ 6,592,059	15.28%
EBOX	334,259	346,067	289,347	349,088	288,522	322,671	332,865	252,149	312,881	316,850	284,338	\$ 3,429,036	7.95%
Paymentus, IVR, Credit Cards	1,827,817	1,855,221	1,688,345	2,034,573	1,499,559	2,049,055	2,011,139	1,553,121	2,179,266	1,939,784	1,725,899	\$ 20,363,779	47.21%
Lockbox Deposits	1,169,619	1,273,243	1,089,604	1,285,860	903,561	1,175,827	1,098,091	706,631	1,025,831	821,238	749,957	\$ 11,299,462	26.20%
Pay Near Me	14,561	14,530	10,989	11,968	10,491	12,923	12,774	7,957	12,063	11,624	11,011	\$ 130,892	0.30%
Total Revenue to Bank	\$3,695,709	\$4,558,672	\$ 3,563,214	\$ 4,198,069	\$ 3,405,024	\$ 4,368,659	\$ 3,867,538	\$ 3,750,679	\$ 4,139,464	\$ 4,026,321	\$ 3,560,122	\$ 43,133,471	100.00%
NSF	(7,962)	(4,946)	(8,970)	(8,951)	(21,124)	(20,764)	(9,479)	(10,322)	(8,496)	(9,457)	(10,260)	\$ (120,731)	
Net deposits	\$3,687,747	\$4,553,726	\$ 3,554,244	\$ 4,189,118	\$ 3,383,900	\$ 4,347,895	\$ 3,858,059	\$ 3,740,357	\$ 4,130,968	\$ 4,016,864	\$ 3,549,862	\$ 43,012,740	

G. Cash Collections on Behalf of the City of Rialto-Prior Year Comparison

	May 2025	May 2024	Variance
UUT Water	\$ 18,230	\$ 84,788	\$ (66,558)
UUT Sewer	26,728	199,424	(172,696)
Ambulance	4,879	6,218	(1,339)
Total	\$ 49,836	\$ 290,430	\$ (240,594)

H. Non-Rate Revenue + Utility Revenue Collections Prior Year Comparison

	May 2025	May 2024	Variance
Non-Rate / Extra Territorial Revenue	\$ 61,967	\$ 525,133	\$ (463,166)
Utility Revenue	\$3,413,115	\$5,225,710	(1,812,595)
Total	\$3,475,082	\$5,750,843	\$(2,275,761)

I. Non-Rate Revenue + Utility Revenue Collected Fiscal Year-to-Date

	Jul 2024	Aug 2024	Sept 2024	Oct 2024	Nov 2024	Dec 2024	Jan 2025	Feb 2025	Mar 2025	Apr 2025	May 2025	Total
Non-Rate Revenue												
Cell Tower Rent, Lease	5,647	19,985	21,506	66,161	55,391	9,235	12,824	29,957	55,985	66,904	19,985	363,580
Interest Income	19,290	9,559	-	-	-	-	-	-	-	-	9,000	37,849
NRR-FOG	-	-	-	-	-	-	-	-	-	-	-	-
Municipal Water Sales	-	-	-	-	332,624	-	-	-	-	-	-	332,624
Extra Terr- Sewage	31,463	252,123	161,340	185,039	136,360	128,586	145,544	225,208	159,667	346,473	-	1,771,803
Abatement of Expenses	-	-	-	-	-	-	-	-	-	-	-	-
Water Meter Lost/Damaged/Repl	1,419	710	2,129	5,171	-	-	4,924	492	36,930	10,601	26,256	88,633
Misc Fees - New Occ., Same Day Svc	5,877	4,453	4,939	5,629	3,067	5,525	5,945	6,069	6,060	6,400	6,726	60,690
Miscellaneous Revenue - Sewer	-	-	-	-	-	-	-	-	-	-	-	-
NSF	-	342	-	152	35	-	30	-	-	-	-	559
Total Non-Rate Revenue	\$ 63,696	\$ 287,172	\$ 189,914	\$ 262,152	\$ 527,477	\$ 143,346	\$ 169,267	\$ 261,726	\$ 258,642	\$ 430,379	\$ 61,967	2,655,737
Utility Revenue												
Water Penalty	3,154	15,321	10,183	5,903	2,602	720	101	6,016	16,300	23,990	27,506	111,796
Sewer Penalty	5,200	33,061	18,283	7,639	3,313	1,435	700	11,411	33,426	40,185	43,522	198,175
Turf Removal, Hi-Eff Rebate	(1,000)	(100)	-	-	-	-	-	-	-	(1,000)	-	(2,100)
Water Deposits Billed	17,289	8,629	9,906	8,629	8,686	10,057	11,411	11,856	20,052	16,614	13,908	137,038
Hydrant Deposits	574	-	-	-	420	282	-	-	702	-	-	1,978
Sewer Deposits Paid	-	-	-	-	-	-	-	-	-	-	-	-
Sewer Deposits Billed	11,760	12,823	9,518	10,900	15,201	8,822	11,737	8,959	18,436	10,612	14,975	133,743
Water	1,171,886	1,540,256	1,194,449	1,386,681	884,906	1,229,369	1,086,436	1,126,085	1,161,792	1,223,012	976,785	12,981,657
Sewer	2,327,246	2,418,456	1,959,890	2,448,917	1,669,263	2,454,711	2,380,281	1,745,679	2,469,796	2,345,182	1,902,496	24,121,917
Unapplied Credits	(101,077)	(54,176)	(140,916)	(81,949)	(69,090)	(35,829)	(43,709)	(83,121)	(42,584)	(20,663)	(61,290)	(734,404)
Bad Debt Sewer	12,029	9,909	-	-	-	-	4,560	-	-	-	6,647	33,145
Bad Debt Water	-	-	-	-	-	-	-	-	-	-	-	-
Tax Roll Sewer	15,596	2,790	-	-	-	22,950	399,116	474,784	8,462	3,652	488,565	1,415,915
Collection Agency - Water	-	-	-	-	-	-	-	-	-	-	-	-
Collection Agency - Sewer	-	-	-	-	-	-	-	-	-	-	-	-
Collection Agency - Misc Water	-	-	-	-	-	-	-	-	-	-	-	-
Total Utility Revenue	\$3,462,657	\$3,986,969	\$3,061,313	\$3,786,720	\$ 2,515,301	\$ 3,692,517	\$ 3,850,633	\$ 3,301,669	\$ 3,686,382	\$ 3,641,584	\$ 3,413,115	\$38,398,861
Total Non-Rate + Utility Rev.	3,526,353	4,274,141	3,251,227	4,048,872	3,042,778	3,835,863	4,019,900	3,563,395	3,945,024	4,071,963	3,475,082	41,054,598

J. Increase in Cash Collections and Fund Distribution—Prior Year Comparison

	Increase to Cash per Incode	Adjustments Required to GL Cash	Fund 660-Sewer	Fund 670-Water	Total Cash Per GL	Adjustments To Match RUA to Bank	Cash/CC/Cks Deposit To Bank
May 2025	123,958	10,063	2,412,249	1,102,607	3,524,918	35,204	3,560,122
May 2024	4,487,203	7,390	3,154,879	1,324,934	4,487,203	(21,462)	4,465,741

K. Non-Rate and Extraterritorial Customer Accounts Receivable Aging

Name	Total as of 5/31/2025	Current	31 to 60 days	61 to 90 days	>90 days
AT&T - Easton	\$ (1,500)	(1,500)			
Cedar House	5,692	5,692			
CITY OF FONTANA	133,713	133,713			
Colton Unified School District	5,571	5,571			
County of San Bernardino-CSA 70 BL	20,948	20,948			
Rialto BioEnergy Facilities	32,278	21,528	10,750		
Sprint-Nextel	9,331	-			9,331
San Bernardino Co Waste System Div	-	-			
SB Valley Mun Water District	-	-			
Vertical Bridge Holdco, LLC (CIG)	4,714	-			4,714
Grand Total	\$ 210,746	\$ 185,952	\$ 10,750	\$ -	\$ 14,045

AT&T makes annual payment of one cell tower rent and monthly dues on the other. The customer is current with its payments.

Social Science Service (Cedar House) balance reflects current service fees.

City of Fontana is current with its obligations.

Colton Unified School District is current with its obligations.

County of San Bernardino is current with its obligations.

Rialto Bioenergy Solutions RWS shows a current Invoice balance in May. Subsequently, received payments in June.

Vertical Bridge Holdco, LLC and Sprint: Vertical Bridge and Sprint have been contacted for open Invoices as well.

RIALTO WASTEWATER

MONTHLY OPERATIONS REPORT

Reporting Period:
May 2025

Prepared for: - Rialto Water Services



Prepared by: - Veolia Water West Operating Services



RIALTO WASTEWATER OPERATIONS AND MAINTENANCE REPORT

Contents

EXECUTIVE SUMMARY

- 1. Collection System / Customer Service Log**
 - a. Collection System Activities
 - b. S.S.O. dates
 - c. Customer Service Call Outs
- 2. Wastewater Treatment Plant - Monthly Overview**
 - a. Significant events during the month
- 3. Treatment Facility Performance / Laboratory Activities**
 - a. See attached Monthly Performance Summary
 - b. Summary of Notices and Laboratory Tests / Reports filed with government agencies
 - c. Effluent Specifications Exceedance Discussion
- 4. Monthly Safety Program Overview**
- 5. Biosolids, Chemicals, and Utilities**
 - a. Monthly Biosolids Production
 - b. Monthly Chemical Consumption
 - c. Monthly Utilities Consumption
- 6. Odor Complaints / Actions Taken**
- 7. Major Equipment and/or Machinery Outages**
- 8. Outside Agency Activities during the Month**
 - a. Government agency or property insurance inspections
 - b. Government agency environmental, health, or safety tests/monitoring
 - c. Government agency notice of violation received
 - d. Government agency monitoring
 - e. Other matters of concern
- 9. Complaint Logs**

TABLES

- Treatment Facility – Monthly Performance Summary
- Collection System- Monthly Pipe Cleaned

RIALTO WASTEWATER

MONTHLY OPERATIONS REPORT

EXECUTIVE SUMMARY

Highlights of this month's Wastewater O&M report include the following:

- The treatment plant performed well and met all compliance parameters.
- There were two residential call-outs for sewer-related issues.

1. Collection System/Customer Service Log

a. Collections group activities this month:

Category	Current Month Statistics	Prior Month Statistics	2025 Year to Date Statistics
Sanitary sewers are cleaned using the conventional method, including feet, which includes "Hot spot cleaning."	35,102	15,459	118,351
Sanitary sewers assessed using the SL-RAT method, feet	35	0	35
CCTV Inspection, miles (26 is the annual goal)*	3.37	2.63	12.7
Manhole Inspections	1	13	31
USA Dig Alert Markings, count	28	69	201
Residential call outs	3	2	11
Sanitary sewer overflows	0	0	1

b. S.S.O. N/A

c. Customer Service Call Outs – See Item 9 for details.

2. Wastewater Treatment Plant – Monthly Overview

- NPDES discharge compliance parameters were achieved.

a. Significant events during the month were:

O.R.&R. Projects WW2324-17 and WW2324-18 completed and in operation.

3. Treatment Facility Performance/Laboratory Activities

- a. See the attached Table 1, Monthly Performance Summary.
- b. Summary of Notices and Laboratory Tests/Reports filed with government agencies.
The monthly submittal of State/Federal discharge monitoring reports was completed promptly.

- c. Effluent specification exceedance discussion
See Section 2 above. N/A

4. Monthly Safety Program Overview

Category	Monthly Statistic
Safety Training Topics	2
Lost Time Incidents count*	0
Recordable Incidents, count	0
Near Miss Incidents, count	1
Vehicle Incidents, count	0

*A lost time incident has not occurred since 9-3-2020, totaling 1,730 days.

5. Biosolids, Chemicals, and Utilities

a. Monthly Biosolids Production

Biosolids	Current Month Statistics	Prior Month Statistics	2025 Year-to-Date Statistics
Wet Tons Produced	1,408.62	1,532.12	6,464.51

b. Monthly Chemical Consumption

Chemical	Current Month Gallons Used	Prior Month Gallons Used
Sodium Hypochlorite, Tertiary Disinfection	29,766	28,526
Sodium Bisulfite, Discharge Dechlorination	11,166	7,003
Ferrous Chloride, Digester Gas Conditioning	4,398	4,108
Polymer, Gravity Belt Thickener	353	356
Polymer, Belt Filter Press	702	712
Alum, Tertiary Filters	1	12

c. Monthly Utilities Consumption

Utility	Current Month Statistics	Prior Month Statistics
Electricity WWTP, KWH	**	412,716
Electricity Lilac LS, KWH	**	755
Electricity Sycamore LS, KWH	**	493*
Electricity Ayala LS, KWH	**	7895
Electricity Agua Mansa LS, KWH	**	2818
Electricity Cactus LS, KWH	**	1585
Electricity Ramrod LS, KWH	623	597
Frisbee Park LS, KWH	**	769
El Rancho Verde LS, KWH	1975	1825
Natural Gas WWTP, Therms	5969	5930

* LS is in bypass mode, pending CIP completion

** SCE has not updated this account.

6. Odor Complaints Received/Actions Taken

No odor complaints were received this month.

7. Major Equipment and/or Machinery Outages

- Sludge Holding Tank
- Aeration Basin #1 is currently offline.

8. Outside Agency Activities during the Month

- a. Government agency or property insurance inspections
None
- b. Government agency environmental, health, or safety tests/monitoring
Permit testing was completed for this month
- c. Government agency notices of violation received
No notices were received.
- d. Government agency monitoring
Routine monitoring reports were submitted.
- e. Other matters of concern
None

9. Customer Service Callout Details Log

Date	Address	Comments	Personnel	Manhole	To Manhole
5/7/2025	429 E Mariposa	The resident called to report a backup in their sewer line. The mainline was inspected and found to be clear. The resident was informed to call the plumber.	ET	NA	NA
5/19/2025	1039 N Sycamore	A call was received from Public Works about a possible SSO. The problem was a potable water leak on the resident's property.	ET	NA	NA
5/22/2025	1173 Cactus	A resident called to report roaches coming from a manhole. Collection applied roach bait to the manhole and scheduled it for spraying. The resident was informed.	ET		

Table 1 Summary

Table 1 Summary MOR

May 2025

Date	Rialto	Rialto			Rialto	Rialto WRF Effluent			Rialto WRF Influent		Rialto WRF Effluent		
	Influent daily flow	Effluent Flow	Influent BOD	Influent BOD	Influent BOD Load	Effluent BOD	Effluent BOD Load	BOD % Removal	Influent TSS	Influent TSS Load	Effluent TSS	Effluent TSS Load	TSS % Removal
	MGD	MGD	mg/l	mg/l	lbs/day	mg/L	lbs/day	%	mg/L	lbs/day	mg/L	lbs/day	%
5/1/2025	7.21	7.04											
5/2/2025	6.41	6.76	310	310	16,572	2.5	140.95	99.20					
5/3/2025	6.88	7.35											
5/4/2025	6.48	7.30											
5/5/2025	7.54	7.26	300	300	18,865	<5.0	302.74	98.30	190.00	11948.00	<0.50	30.00	99.70
5/6/2025	6.97	7.64											
5/7/2025	6.84	7.02											
5/8/2025	7.10	7.06											
5/9/2025	7.21	7.29	320	320	19,242	4.0	243.19	98.80					
5/10/2025	6.29	7.54											
5/11/2025	6.78	7.14											
5/12/2025	6.91	6.73	390	390	22,475	3.1	174.00	99.20	240.00	13831.00	1.00	56.00	99.60
5/13/2025	6.99	7.21											
5/14/2025	6.74	6.98											
5/15/2025	6.93	7.40											
5/16/2025	6.92	7.16	360	360	20,777	3.8	226.91	98.90					
5/17/2025	6.57	7.10											
5/18/2025	6.92	7.28											
5/19/2025	7.27	7.41	470	470	28,497	3.1	191.58	99.30	260.00	15764.00	1.00	62.00	99.60
5/20/2025	7.00	6.86											
5/21/2025	6.89	7.48											
5/22/2025	6.98	7.07											
5/23/2025	6.91	7.36	330	330	19,018	4.9	300.77	98.50					
5/24/2025	6.73	6.79											
5/25/2025	6.72	7.23											
5/26/2025	6.48	6.72											
5/27/2025	7.19	7.16	300	300	17,989	3.1	185.11	99.00	220.00	13192.00	0.80	48.00	99.60
5/28/2025	6.89	7.41											
5/29/2025	6.84	7.23											
5/30/2025	6.69	7.37											
5/31/2025	6.90	6.84											
Minimum	6.29	6.72	300	300	16,572	2.5	140.95	98.30	190.00	11948.00	<0.50	30.00	99.60
Maximum	7.54	7.64	470	470	28,497	<5.0	302.74	99.30	260.00	15764.00	1.00	62.00	99.70
Total	213.18	222.19	2,780	2,780	163,436	<29.5	1765.26	791.20	910.00	54735.00	<3.30	196.00	398.60
Average	6.88	7.17	348	348	20,429	<3.7	220.66	98.90	228.00	13664.00	<0.83	49.00	99.60

Table 2 Summary

Table 2 Summary MOR

May 2025

Date	Rialto	Rialto WRF Effluent		Rialto WRF Eff		Rialto WRF Effluent		Rialto	Rialto
	Influent Conductivity (uS/cm)	Eff Conductivity Daily Ave (uS/cm)	Influent COD mg/l	Final Effluent COD mg/l	Influent TDS mg/l	Filter Effluent TDS mg/l	EFF FINAL TDS mg/L	Influent Inorganic Nitrogen mg/L	Effluent Inorganic Nitrogen mg/l as N
5/1/2025	1411.00	819.00							
5/2/2025	1429.00	836.00							
5/3/2025	1274.00	886.00							
5/4/2025	1362.00	878.00							
5/5/2025	1250.00	857.00							
5/6/2025	1209.00	860.00	690	20.0	480.00	420.00	470.00	40.00	9.80
5/7/2025	1481.00	879.00							
5/8/2025	1379.00	879.00							
5/9/2025	1392.00	855.00							
5/10/2025	1461.00	860.00							
5/11/2025	1211.00	849.00							
5/12/2025	1430.00	857.00							
5/13/2025	1297.00	889.00							
5/14/2025	1540.00	865.00							
5/15/2025	1441.00	846.00							
5/16/2025	1376.00	840.00							
5/17/2025	1430.00	853.00							
5/18/2025	1392.00	863.00							
5/19/2025	1468.00	844.00							
5/20/2025	1606.00	833.00							
5/21/2025	1489.00	826.00							7.30
5/22/2025	1587.00	811.00							
5/23/2025	1427.00	811.00							
5/24/2025	1405.00	845.00							
5/25/2025	1362.00	842.00							
5/26/2025	1474.00	823.00							
5/27/2025	1401.00	818.00							
5/28/2025	1424.00	840.00							
5/29/2025	1400.00	830.00							
5/30/2025	1594.00	840.00							
5/31/2025	1292.00	826.00							
Minimum	1209.00	811.00	690	20.0	480.00	420.00	470.00	40.00	7.30
Maximum	1606.00	889.00	690	20.0	480.00	420.00	470.00	40.00	9.80
Average	1409.00	847.00	690	20.0	480.00	420.00	470.00	40.00	8.55

Table 3 Summary

*Cyanide was not available at the time of report completion

Table 3 Summary MOR

May 2025

Date	Rialto WRF Influent		Rialto WRF Effluent		Rialto WRF Eff		Rialto WRF Effluent		Tranfer	Tranfer	Rialto	Tranfer Data
	Influent pH	24 hr avg. effl. pH	Effluent Temp	Effluent Ammonia	Effluent Total Coliform	Effluent Coliform 7 Day Median	Effluent Cyanide, Free Available	Eff D(2-ethylhexyl) phthalate (DEHP)	FIT-8321 ADG #2 Flow	FIT-8321 ADG #2 Flow	Natural Gas Daily Use	FIT-8321 ADG #2 Flow
	SU	SU	Deg C	mg/L	MPN/100mL	MPN/100ML	ug/L	ug/l	cu ft/day	cu ft/day	cfd/day	cu ft/day
5/1/2025	7.60	7.27	23.20		<1.8	<1.80			106190.00	106190.00	14800.00	106190.00
5/2/2025	7.47	7.25	23.20		<1.8	<1.80			161969.00	161969.00	16900.00	161969.00
5/3/2025	7.15	7.21	23.10		<1.8	<1.80			162510.00	162510.00	17600.00	162510.00
5/4/2025	7.21	7.25	22.90		<1.8	<1.80			140239.00	140239.00	17700.00	140239.00
5/5/2025	7.15	7.23	22.90	<0.10	2.0	<1.80			143488.00	143488.00	20400.00	143488.00
5/6/2025	7.23	7.19	22.70		<1.8	<1.80		<5.00	134689.00	134689.00	38100.00	134689.00
5/7/2025	7.37	7.14	22.70		<1.8	<1.80			157241.00	157241.00	24100.00	157241.00
5/8/2025	7.41	7.15	23.10		<1.8	<1.80			162513.00	162513.00	20100.00	162513.00
5/9/2025	7.47	7.11	23.60		<1.8	<1.80			162522.00	162522.00	21900.00	162522.00
5/10/2025	7.15	6.94	23.90		<1.8	<1.80			168082.00	168082.00	20400.00	168082.00
5/11/2025	7.46	7.17	24.10		<1.8	<1.80			155297.00	155297.00	20000.00	155297.00
5/12/2025	7.38	7.20	24.10	<0.10	<1.8	<1.80			159340.00	159340.00	20700.00	159340.00
5/13/2025	7.46	7.20	23.70		2.0	<1.80			157234.00	157234.00	1700.00	157234.00
5/14/2025	7.06	7.15	23.40		<1.8	<1.80			164091.00	164091.00	21300.00	164091.00
5/15/2025	7.16	7.05	23.50		<1.8	<1.80			150764.00	150764.00	20600.00	150764.00
5/16/2025	7.30	6.86	23.80		<1.8	<1.80			191879.00	191879.00	19800.00	191879.00
5/17/2025	7.18	6.94	23.80		<1.8	<1.80			181759.00	181759.00	21100.00	181759.00
5/18/2025	7.27	7.06	23.50		<1.8	<1.80			193843.00	193843.00	22300.00	193843.00
5/19/2025	7.20	7.00	23.90	0.07	<1.8	<1.80			152861.00	152861.00	21800.00	152861.00
5/20/2025	6.70	7.23	24.30		<1.8	<1.80			159318.00	159318.00	21700.00	159318.00
5/21/2025	7.38	7.29	24.50		<1.8	<1.80			162266.00	162266.00	2300.00	162266.00
5/22/2025	7.51	7.26	24.70		<1.8	<1.80			159695.00	159695.00	2200.00	159695.00
5/23/2025	7.34	7.24	24.70		4.0	<1.80			159091.00	159091.00	22200.00	159091.00
5/24/2025	7.49	7.26	24.60		<1.8	<1.80			153515.00	153515.00	22100.00	153515.00
5/25/2025	7.64	7.23	24.50		<1.8	<1.80			165120.00	165120.00	21000.00	165120.00
5/26/2025	7.60	7.26	24.40		<1.8	<1.80			142055.00	142055.00	10800.00	142055.00
5/27/2025	7.60	7.37	24.80	0.07	<1.8	<1.80			140877.00	140877.00	900.00	140877.00
5/28/2025	7.27	7.36	24.90		<1.8	<1.80			150280.00	150280.00	21300.00	150280.00
5/29/2025	7.56	7.25	24.80		<1.8	<1.80			156478.00	156478.00	21000.00	156478.00
5/30/2025	7.43	7.22	25.10		<1.8	<1.80			181468.00	181468.00	1600.00	181468.00
5/31/2025	7.29	7.19	25.50		<1.8	<1.80			126354.00	126354.00	1500.00	126354.00
Minimum	6.70	6.86	22.70	0.07	<1.8	<1.80		<5.00	106190.00	106190.00	900.00	106190.00
Maximum	7.64	7.37	25.50	<0.10	4.0	<1.80		<5.00	193843.00	193843.00	38100.00	193843.00
Average	7.34	7.18	23.90	<0.09	<1.9	<1.80		<5.00	156872.00	156872.00	17094.00	156872.00

Monthly Sewer Line Cleaned

Map Centre Coords
x: 2058026, y: 565491
Date Printed: 8/16/2025
Scale 1:10000

Map Centre Coords
x: 2058026, y: 565491
Date Printed: 8/16/2025
Scale 1:10000

