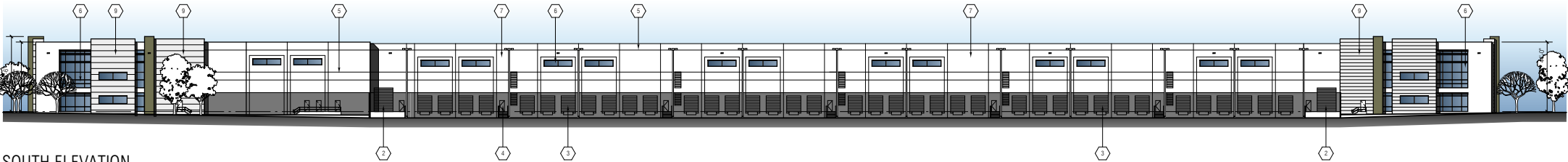
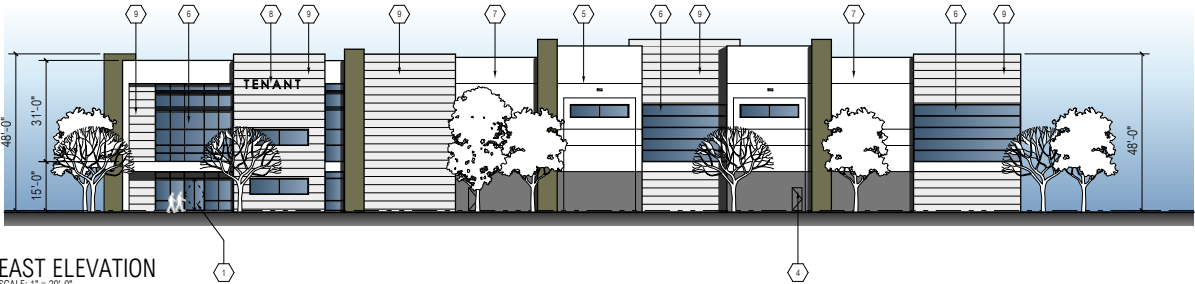


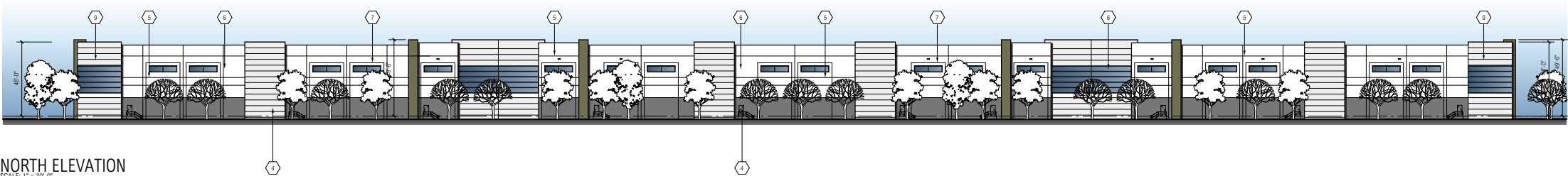
WEST ELEVATION
SCALE: 1" = 20'-0"



SOUTH ELEVATION
SCALE: 1" = 30'-0"



EAST ELEVATION
SCALE: 1" = 20'-0"



NORTH ELEVATION
SCALE: 1" = 30'-0"

EXTERIOR ELEVATIONS

KEYNOTES

- 1. PRIMARY ENTRANCE.
- 2. PAINTED 12' WIDE X 14' HIGH LEVEL VERTICAL LIFT TRUCK DOOR.
- 3. PAINTED 9' WIDE X 10' HIGH VERTICAL LIFT TRUCK DOOR.
- 4. 3' X 7' PAINTED METAL MAN DOOR.
- 5. 2" WIDE X 3/4" DEEP HORIZONTAL / VERTICAL REVEAL.
- 6. BLUE GLASS IN ANODIZED ALUMINUM STOREFRONT FRAME SYSTEM.
- 7. PAINTED CONCRETE TILT-UP EXTERIOR WALL CONSTRUCTION.
- 8. PROPOSED FUTURE TENANT SIGNAGE LOCATION.
- 9. FORMLINER HORIZONTAL SCORED CONCRETE WALL PANEL.
- 10. LIT BUILDING ADDRESS NUMBERS

GENERAL NOTES:

- 1. ALL ROOFTOP MECH. EQUIPMENT SHALL BE SCREENED FROM VIEW.
- 2. PROVIDE GRAFFITI RESISTANT COATING TO A HEIGHT OF 12 FEET ON THE WEST ELEVATION.

FINISH SCHEDULE:

- | | |
|----|---|
| 1. | FIELD COLOR
FRAZEE - CL 3211W - WASH BASIN |
| 2. | LIGHT ACCENT COLOR
FRAZEE - CL 3214M - WAVELENGTH |
| 3. | DARK ACCENT COLOR
FRAZEE - CL 3215D - ELF |
| 4. | DARK ACCENT COLOR
FRAZEE - CL 3216A - BRAINCHILD |
| 5. | CANOPIES - ALLUCOBOND:
NATURAL BRUSHED GRAPHITE |
| 6. | GLASS - PRIMARY WINDOW
PPG SOLARCOOL PACIFICA |
| 7. | GLASS - ACCENT COLOR AT ENTRIES
PPG VISTACOOL PACIFICA |
| 8. | TOWER ACCENT COLOR
PPG - 11-26 |



SIMILAR SITE LIGHTING STYLE
SCALE: N.T.S.

1

RGAA

Office of Architectural Design

15231 Alton Parkway, Suite 100
Irvine, CA 92618

T 949-341-0920
FX 949-341-0922

CONSULTANT

PROFESSIONAL SEALS

PEPPER AVENUE
DEVELOPMENT

0000 PEPPER AVENUE
RIALTO, CA

Newcastle | PARTNERS
4740 GREEN RIVER, SUITE 110
CORONA, CA 92880
951-582-9800

CD		
BID		
PC		
DD		
SD	3/4/24	SCHEMATIC DESIGN
MARK	DATE	DESCRIPTION

RGAA PROJECT NO:	21125.00
OWNER PROJECT NO:	00000.00
CAD FILE NAME:	21125-00-A3-1P
DRAWN BY:	MG
CHKD BY:	CS
COPYRIGHT	RGAA, OFFICE OF ARCHITECTURAL DESIGN
SHEET TITLE	EXTERIOR ELEVATIONS