



hpa, inc.
18831 bardeen avenue, - ste. #100
irvine, ca
92612
tel: 949-863-1770
fax: 949-863-0851
email: hpa@hparchs.com

Owner:
**RIALTO SPRINGS
LLC**
13116 Imperial Highway
Santa Fe Springs CA 90670
tel: 562-921-3581

Project:
**THE WEST COAST
& LOCUST AVENUE
WAREHOUSE**
SEC West Coast Blvd &
N Locust Ave

Consultants:
Civil: ALTA
Structural: -
Mechanical: -
Plumbing: -
Electrical: -
Landscape: HUNTER LANDSCAPE
Fire Protection: -
Soils Engineer: -

Title: Overall Floor Plan
Project Number: 21376
Drawn by: JW
Date: 08/23/23
Revision: _____
Sheet:

1-DAB-A2.1

FLOOR PLAN KEYNOTES

- 1] CONCRETE TILT-UP PANEL.
- 2] STRUCTURAL STEEL COLUMN.
- 3] TYPICAL STOREFRONT SYSTEM WITH GLAZING. SEE OFFICE BLOW-UP AND ELEVATIONS FOR SIZE, COLOR AND LOCATIONS.
- 4] CONCRETE RAMP W/ 4" HIGH CONC TILT-UP GUARD WALL OR BUILDING WALL ON BOTH SIDE OF RAMP.
- 5] 5'-6" X 5'-6" X 4" THICK CONCRETE EXTERIOR LANDING PAD TYP. AT ALL EXTERIOR MAN DOORS TO LANDSCAPED AREAS. FINISH TO BE MEDIUM BROOM FINISH. PROVIDE WALK TO PUBLIC WAY OR DRIVE WAY AS REQ. BY CITY INSPECTOR.
- 6] EXTERIOR CONCRETE STAIR WITH GUARDRAIL AND HANDRAIL.
- 7] 9' X 10' TRUCK DOOR, SECTIONAL O.H., STANDARD GRADE. DESIGNED TO RESIST WIND CRITERIA.
- 8] LOUVERED OPENING FOR VENTILATION.
- 9] DOCK DOOR BUMPER TYPICAL.
- 10] 12' X 14' DRIVE THRU, SECTIONAL O.H., STANDARD GRADE. DESIGNED TO RESIST WIND CRITERIA.
- 11] 3' X 7' HOLLOW METAL EXTERIOR MAN DOOR.
- 12] SOFFIT LINE ABOVE.
- 13] CONC. FILLED GUARD POST, 6" DIA. U.O.O., 42" H.
- 14] FIRE RISER.
- 15] 2' GUARD.
- 16] RECESSED KNOX BOX 5" HIGH FROM FINISH SURFACE. PER FIRE DEPARTMENT STANDARD.
- 17] ROOF ACCESS LADDER.
- 18] INTERIOR LONG-TERM BIKE RACK. BIKE RACK TO BE PERMANENTLY ANCHORED.
- 19] TUBE STEEL CANOPY.
- 20] EXTERIOR DOWN SPOULTS W/ 2 OVERFLOW SCUPPERS.
- 21] NON-STRUCTURAL ARCHITECTURAL TREATMENT WITH SMOOTH PLASTER FINISH.

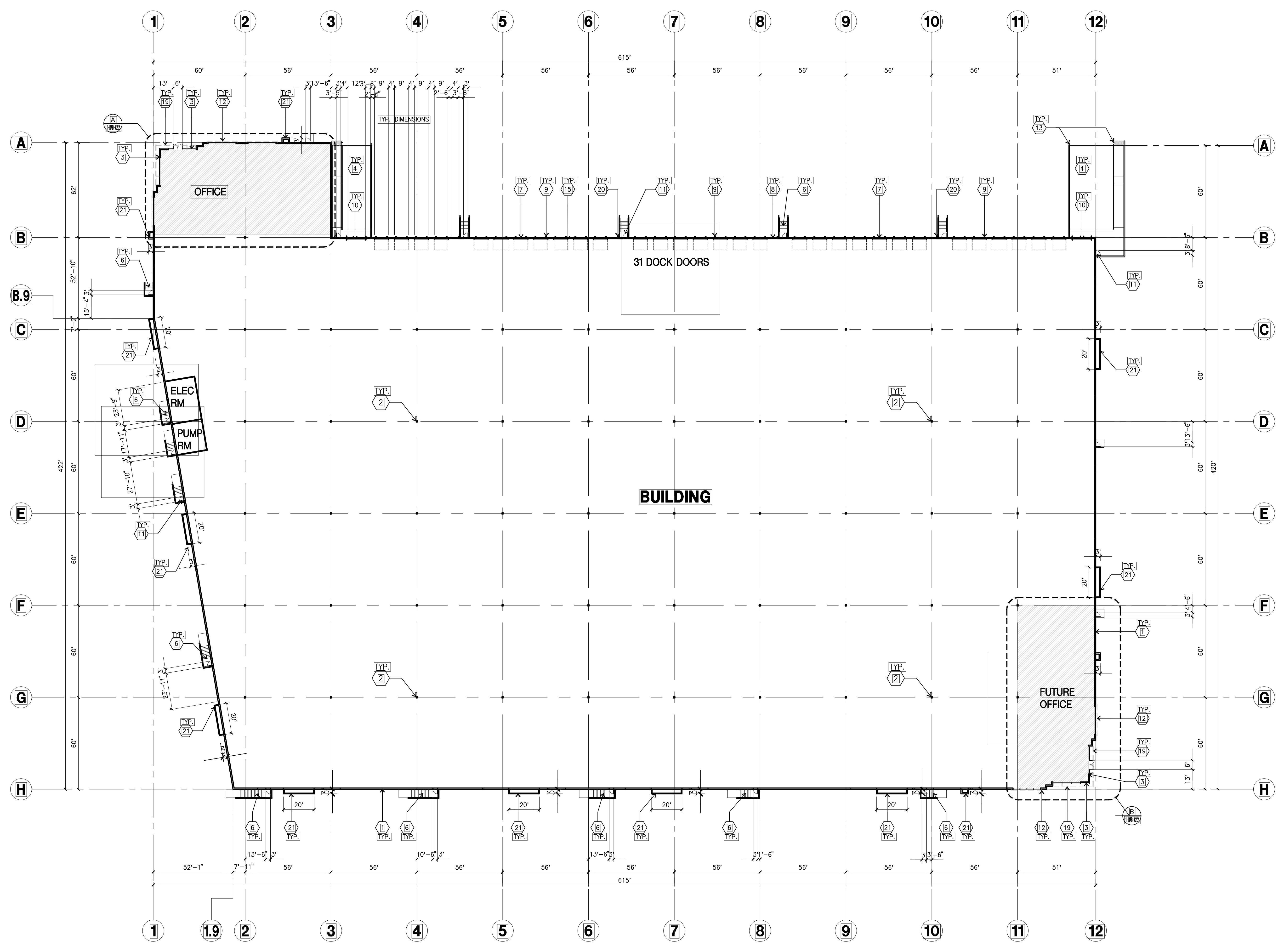
FLOOR PLAN GENERAL NOTES

- 1. THIS BUILDING IS DESIGNED FOR HIGH PILE STORAGE WITH FIRE ACCESS MAN DOORS AT APPROXIMATELY 125' O.C. A SEPARATE PERMIT WILL BE REQUIRED FOR ANY RACKING/CONVEYER SYSTEMS.
- 2. FIRE HOSE LOCATIONS SHALL BE APPROVED PER FIRE DEPARTMENT.
- 3. SEE CIVIL DRAWINGS FOR FINISH SURFACE ELEVATIONS.
- 4. WAREHOUSE INTERIOR CONCRETE WALLS ARE PAINTED WHITE. COLUMNS ARE TO RECEIVE PRIMER ONLY. ALL GYP. BD. WALLS IN WAREHOUSE TO RECEIVE 1 COAT OF WHITE TO COVER.
- 5. SLOPE POUR STRIP 1/2" TO EXTERIOR AT ALL MANDOOR EXITS.
- 6. ALL DIMENSIONS ARE TO THE FACE OF CONCRETE PANEL WALL, GRID LINE, OR FACE OF STUD U.O.O.
- 7. SEE CIVIL DRAWINGS FOR POINT OF CONNECTIONS TO OFF-SITE UTILITIES. CONTRACTOR TO VERIFY ACTUAL UTILITY LOCATIONS. PLUMBING/ELECTRICAL COORDINATION.
- 8. SEE BELOW FOR DOOR TYPES AND SIZES.
NOTE: ALL DOORS PER DOOR SCHEDULE ARE FINISH OPENINGS.
- 9. CONTRACTOR TO PROTECT AND KEEP THE FLOOR SLAB CLEAN. ALL EQUIPMENT TO BE DIAPERED INCLUDING CARS AND TRUCKS.
- 10. ALL EXIT MAN DOORS IN WAREHOUSE TO HAVE ILLUMINATED EXIT SIGN HARDWARE.
- 11. HIGHLY FLAMMABLE AND COMBUSTIBLE MATERIAL SHALL NOT BE USED OR STORED IN THIS BUILDING.
- 12. EACH EXTERIOR EXIT DOOR SHALL BE IDENTIFIED BY A TACTILE EXIT SIGN WITH THE WORDS "EXIT". THE MOUNTING HEIGHT FOR SUCH SIGNAGE SHALL BE 60" FROM FINISH FLOOR LEVEL TO THE CENTER OF THE SIGN.
- 13. NON-ACCESSIBLE DOOR. PROVIDE WARNING SIGN LOCATED IN THE INTERIOR SIDE PER CBC 11B-703.5
- 14. ALL ROOF MOUNTED MATERIALS SHALL BE FULLY SCREENED FROM PUBLIC VIEW.
- 15. PROVIDE FIRE RATED PANEL JOINTS AND CAULKING AT ALL OPENINGS ON 3HR FIRE RATED WALL. SEE A DRAWING FOR LOCATIONS.
- 16. PROVIDE FIRE EXTINGUISHERS PER FIRE MARSHALL.

FLOOR SLAB & POUR STRIPS REQ.

- THESE NOTES ARE VERY MIN. REQUIREMENT.
- 1. FLOOR COMPACTION - 95%
 - 2. TRENCH COMPACTION - 90%
 - 3. BUILDING FLOOR SLAB: SEE STRUCTURAL DRAWINGS.
 - 4. CONTRACTOR TO BUILD FOR CLASS V FLOOR PER A.C.I. 302-IR-96
 - 5. CONCRETE SLAB TO HAVE STEEL FLOT HARD TROWEL BURNISHED FINISH.
 - 6. CONTRACTOR TO CURE SLAB TO BE WET CURING USING BURLINE FOR 7 DAYS MIN.
 - 7. ALL EQUIPMENT & MOVING VEHICLES SHALL BE DIAPERED.
 - 8. NO CRANES, CONCRETE TRUCKS, OR ANYTHING HEAVIER WILL BE PLACED ON THE SLAB.
 - 9. SLAB TO BE FF50 FLSS MEASURED WITHIN 24 HOURS.
 - 10. NO FLY ASH IN THE CONCRETE
 - 11. WHERE INDICATED, PROVIDE VAPOR BARRIER (15MIL STEGO OR EQUAL) UNDER THE CONCRETE SLAB. PROVIDE SAND PER SOILS ENGINEER OR MANUFACTURER'S RECOMMENDATION.
 - CONCRETE SLAB IN FUTURE OFFICE AREAS, WHERE SAND OVER WIQUEEN ARE REQUIRED, SHALL BE NATURALLY HYDRATED WITHOUT USE OF BURLINE, CURING COMPOUND, OR RELEASE AGENTS.
 - CONTROL/CONSTRUCTION JOINTS SHALL NOT BE FILLED WITH MM-80 JOINT FILLER IN FUTURE OFFICE AREAS.
 - 12. SEAL CONCRETE SLAB W/ "LIPDOLITH" SEALER
 - 13. 10' POUR STRIP AT TRUCK DOOR. 4FT. MAX. ELSEWHERE.
 - 14. ALL FLOOR SLAB NAIL OR BRACE FRAME HOLES FILLED WITH APPROVED 2 PART EPOXY COMPOUND TO MATCH CONCRETE COLOR. PEGA BOND LV 2000, BURKE EPOXY INJECTION RESIN OR EQUAL.
 - 15. PROVIDE FIRE EXTINGUISHERS PER FIRE DEPARTMENT REQUIREMENT.
 - 16. MM-80 AT SPEED BAY ONLY.

NOTE:
ALL FIRE RISER AND UNPROTECTED ROOF DRAIN TO RECEIVE TO PROTECTIVE BOLLARDS.



OVERALL FLOOR PLAN
Scale: 1" = 30'-0"
PLAN TRUE NORTH