



City of Rialto

Office of the City Manager

150 S. Palm Avenue • Rialto, California 92376

Tel: (909) 820-2528 • Fax: (909) 820-2527 • Web: www.yourrialto.com

November 10, 2021

Via Email: Supervisor.Baca@bos.sbcounty.gov

Honorable Joe Baca, Jr.
Supervisor – 5th District
San Bernardino County Government Center
385 N. Arrowhead Ave., Fifth Floor
San Bernardino, CA 92415-0110

RE: Request for American Rescue Plan Act Funds; Cactus Avenue Trail

Supervisor Baca,

The City of Rialto respectfully requests your consideration to fund the completion of the Cactus Avenue Trail from Baseline Road south to Rialto Avenue, a distance of 1.5 miles. Currently, an asphalt bikepath exists along the San Bernardino County Flood Control facility – Rialto Channel. However, this facility lacks full utility for multi-modal use, and in 2017 the City successfully applied for and was awarded a \$1,260,000 Active Transportation Program Grant for this project. The Grant will fund construction of a new multi-modal pathway for the Cactus Avenue Trail, but does not include funding for associated landscaping and related improvements that would complete a full recreation facility along Cactus Avenue.

The City is in need of your support in the amount of \$3,000,000 to complete the Cactus Avenue Trail as a fully multi-modal recreation facility that will complement the \$1,260,000 ATP Grant and the City's Local Matching Funds of \$1,300,000 for this project. I have enclosed as **Attachment 1** a Project Cost Estimate and Funding Schedule for all of the elements of this project. Included as **Attachment 2**, the City has also prepared conceptual drawings of the Cactus Avenue Trail to demonstrate how the County's funding will be used to fully improve the blighted condition of the Rialto Channel extending along Cactus Avenue into the recreational facility much needed in our community.

An important component of this request (and included as a component of the funding request) is your support to facilitate the City's permanent use of a nearly 1 acre County parcel located at the southwest corner of Baseline Road and Cactus Avenue (identified by APN 0128-021-35) that may be developed and used by the City as a significant Trail Head amenity and included in this project. I have enclosed as **Attachment 3** information on this parcel.

Finally, we would request your support to facilitate cooperative use of the Flood Control right-of-way for this recreational facility in a way that allows for the City's development of the recreational facility including the landscaping and related amenities adjacent to the Rialto Channel and for Flood Control's reasonable access for purposes of operation and maintenance of the Rialto Channel. Your Office's assistance in fostering a cooperative approach between the City and Flood Control on this important recreational facility will be important.

Supervisor Joe Baca, Jr.
November 10, 2021
Page 2

We sincerely appreciate your recognition of the benefits this recreational facility will have on our community, and how the County's limited discretionary ARPA Funds for the 5th District will be put to its greatest use by investing in this important project.

I appreciate your consideration of our request. If you have any questions, please contact me by email at mfuller@rialtoca.gov or at 909-820-2528.

Sincerely,



Marcus L. Fuller
City Manager

Enclosures:

Attachment 1 – Project Cost Estimate / Funding Schedule

Attachment 2 – Conceptual Drawings

Attachment 3 – Proposed Trailhead Parcel

With copy to:

Adam Acosta, Deputy Chief of Staff – via email Adam.Acosta@bos.sbcounty.gov
File

**ATTACHMENT 1
PROJECT COST ESTIMATE / FUNDING SCHEDULE**

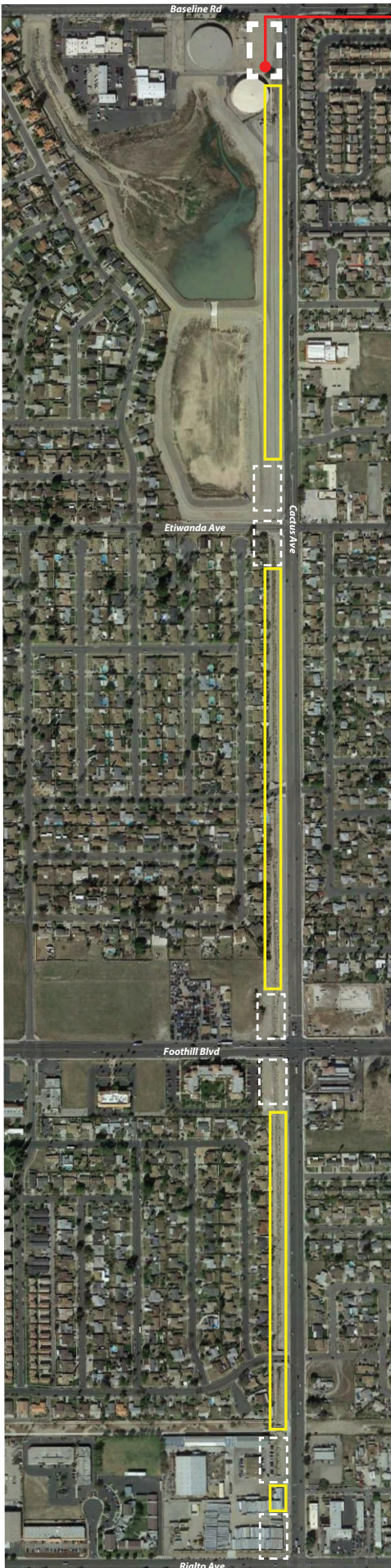
Administration	\$250,000
Final Landscape Design	\$200,000
Construct Multi-Modal Pathway	\$1,750,000
Construct Landscaping/Recreational Amenities	\$2,500,000
Construct Cactus Avenue Trail Head	\$300,000
Construction Management	\$650,000
Total Project Cost	\$5,650,000

Source of Funding

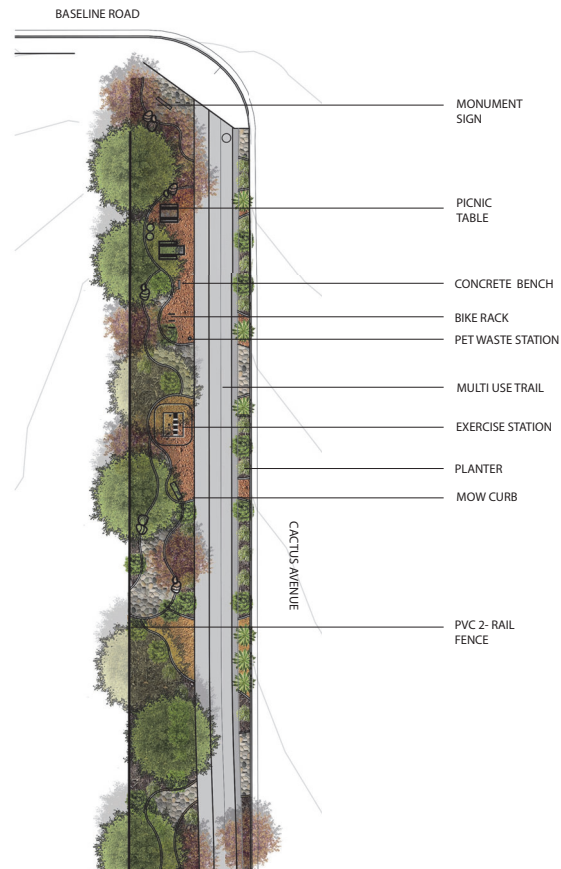
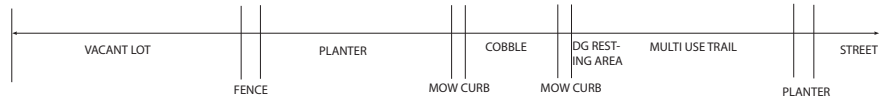
City Local Matching Funds	\$1,390,000
2017 Active Transportation Program Grant	\$1,260,000
San Bernardino County ARPA Fund Allocation	\$3,000,000

**ATTACHMENT 2
CONCEPTUAL PLANS**

FOLLOWS THIS PAGE



PRIMARY TRAIL HEAD



Parkinsonia aculeata 'Desert Museum'
Palo Verde Tree



Anigozanthos flavidus
Kangaroo Paw



Salvia leucantha 'Santa Barbara'
Santa Barbara Sage



Lantana x 'New Gold'
New Gold Lantana



Dalea bicolor var. argyrea
Silver prairie clover



Tristania conferta
Brisbane Box



Lagerstroemia indica
Crape Myrtle

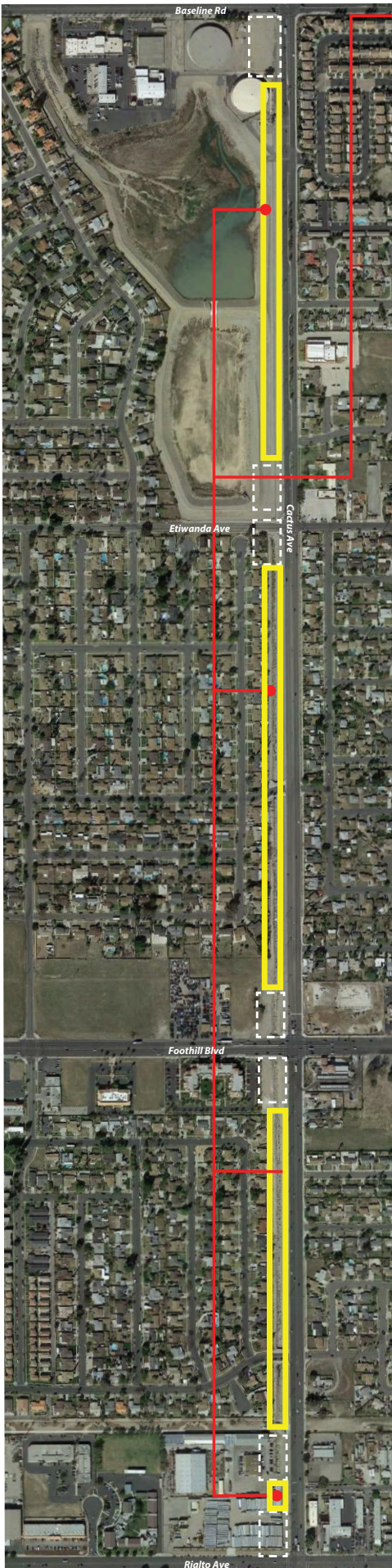
PRIMARY TRAIL HEAD CACTUS TRAIL RIALTO, CALIFORNIA



PREPARED FOR THE CITY OF RIALTO

AUGUST 10, 2018

1



REGULAR TRAIL



RIALTO CHANNEL	PLANTER	MULTI USE TRAIL	PLANTER	STREET
FENCE				



MOW CURB



California Gold Decomposed Granite

MULTI USE TRAIL



Boulders

PLANTER



Adobe Sunset Decomposed Granite

PVC 2-RAIL FENCE



PVC 2-Rail Fence

DG PLANTER



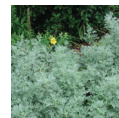
Parkinsonia aculeata 'Desert Museum' Palo Verde Tree



Cistus x purpureus 'Orchid Rockrose'



Callistemon 'Little John' Dwarf Callistemon



Artemisia 'Powis Castle' Wormwood



Caesalpinia gilliesii Mexican Bird of Paradise



Chitalpa tashkentensis Chitalpa



Cercis canadensis 'Forest Pansy' Forest Pansy Redbud



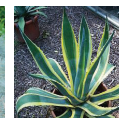
Baccharis x 'Centennial' Centennial Coyote Brush



Rosa x 'Noala' Flower Carpet* Coral Groundcover Rose



Festuca 'Siskiyou Blue' Siskiyou Blue Fescue



Agave americana Century Plant



Aloe striata Coral Aloe



Hesperaloe parviflora Red Yucca



Rosmarinus officinalis 'Huntington Carpet' Huntington Carpet Rosemary

CACTUS TRAIL RIALTO, CALIFORNIA

REGULAR TRAIL

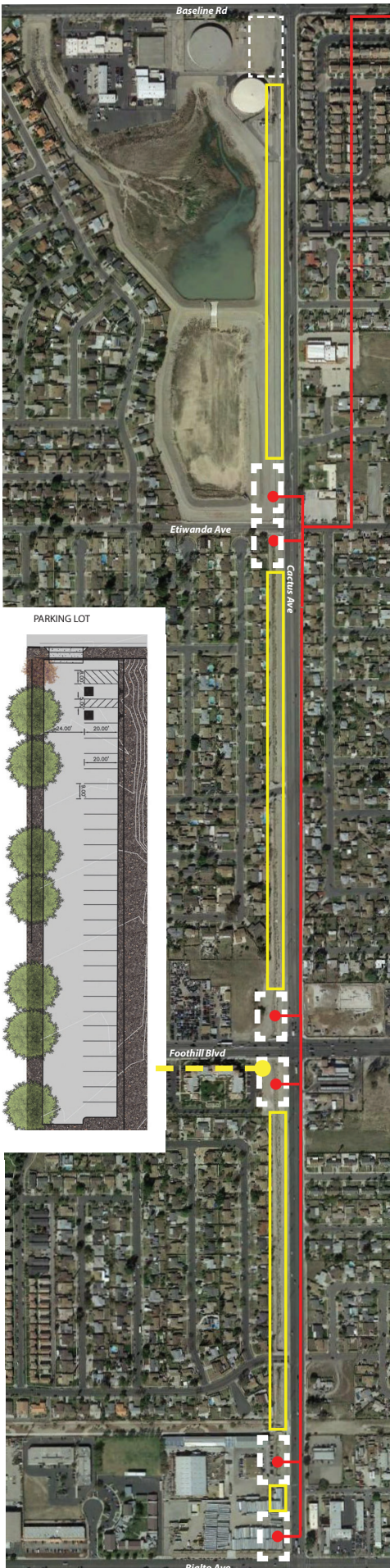


NORTH

PREPARED FOR THE CITY OF RIALTO

AUGUST 10, 2018

2



NEIGHBORHOOD NODES



- PICNIC BENCH
- MOW CURB
- MULTI USE TRAIL
- EXERCISE STATION
- PLANTER
- INFORMATIONAL SIGN
- DG RESTING STATION
- PET WASTE STATION
- PVC 2- RAIL FENCE
- COBBLE
- MONUMENT SIGN



Parkinsonia aculeata 'Desert Museum'
Palo Verde Tree



Anigozanthos flavidus
Kangaroo Paw



Salvia leucantha 'Santa Barbara'
Santa Barbara Sage



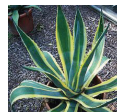
Lantana x 'New Gold'
New Gold Lantana



Dalea bicolor var. argyrea
Silver prairie clover



Lagerstroemia indica
Crape Myrtle



Agave americana
Century Plant



Aloe striata
Coral Aloe

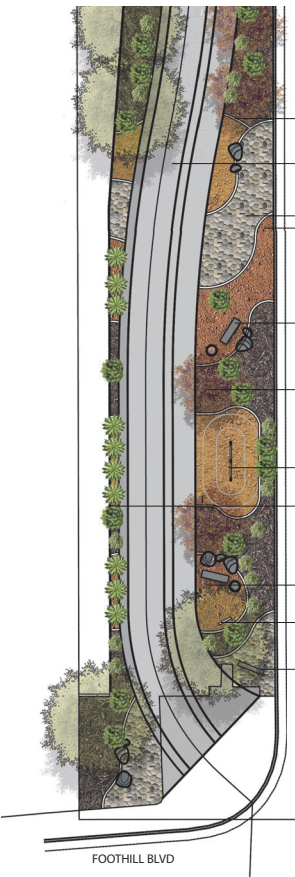
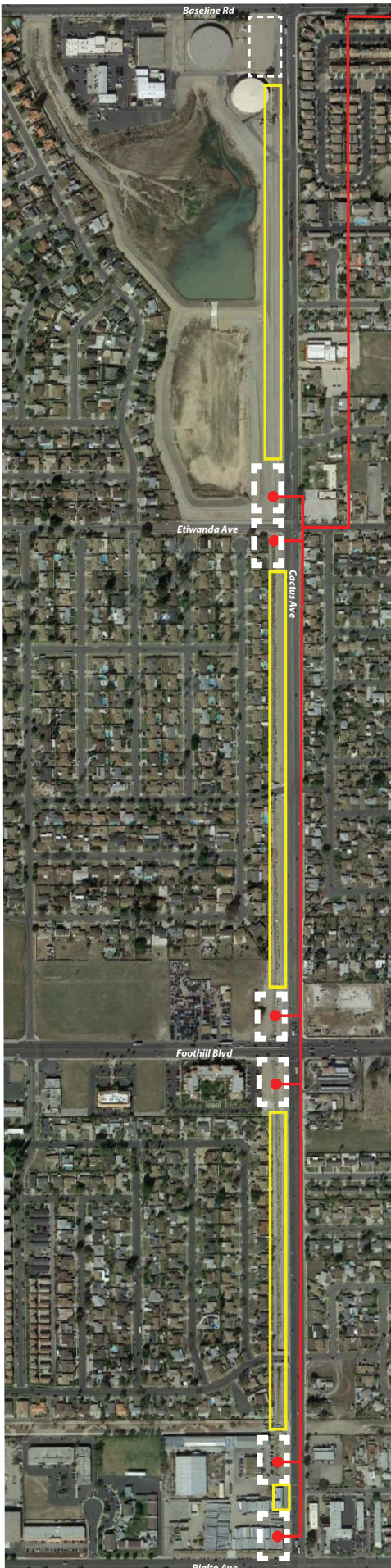


Hesperaloe parviflora
Red Yucca

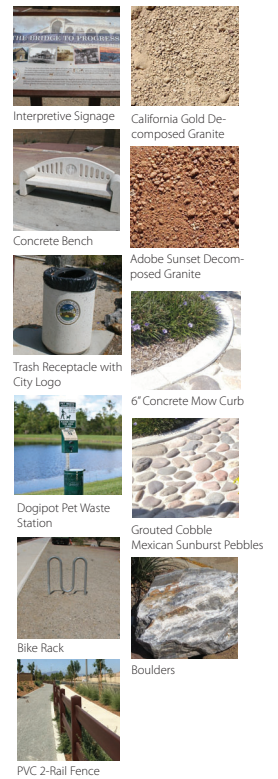
NEIGHBORHOOD NODES ALTERNATIVE 1 CACTUS TRAIL RIALTO, CALIFORNIA



NEIGHBORHOOD NODES- ALTERNATIVE



- MOW CURB
- MULTI USE TRAIL
- COBBLE PET WASTE STATION
- PICNIC BENCH
- PLANTER
- EXERCISE STATION
- PVC 2- RAIL FENCE
- DG RESTING STATION
- INFORMATIONAL SIGN
- MONUMENT SIGN



Parkinsonia aculeata 'Desert Museum'
Palo Verde Tree



Anigozanthos flavids
Kangaroo Paw



Salvia leucantha 'Santa Barbara'
Santa Barbara Sage



Lantana x 'New Gold'
New Gold Lantana



Dalea bicolor var. argyrea
Silver prairie clover



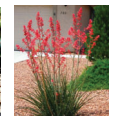
Lagerstroemia indica
Crape Myrtle



Agave americana
Century Plant



Aloe striata
Coral Aloe



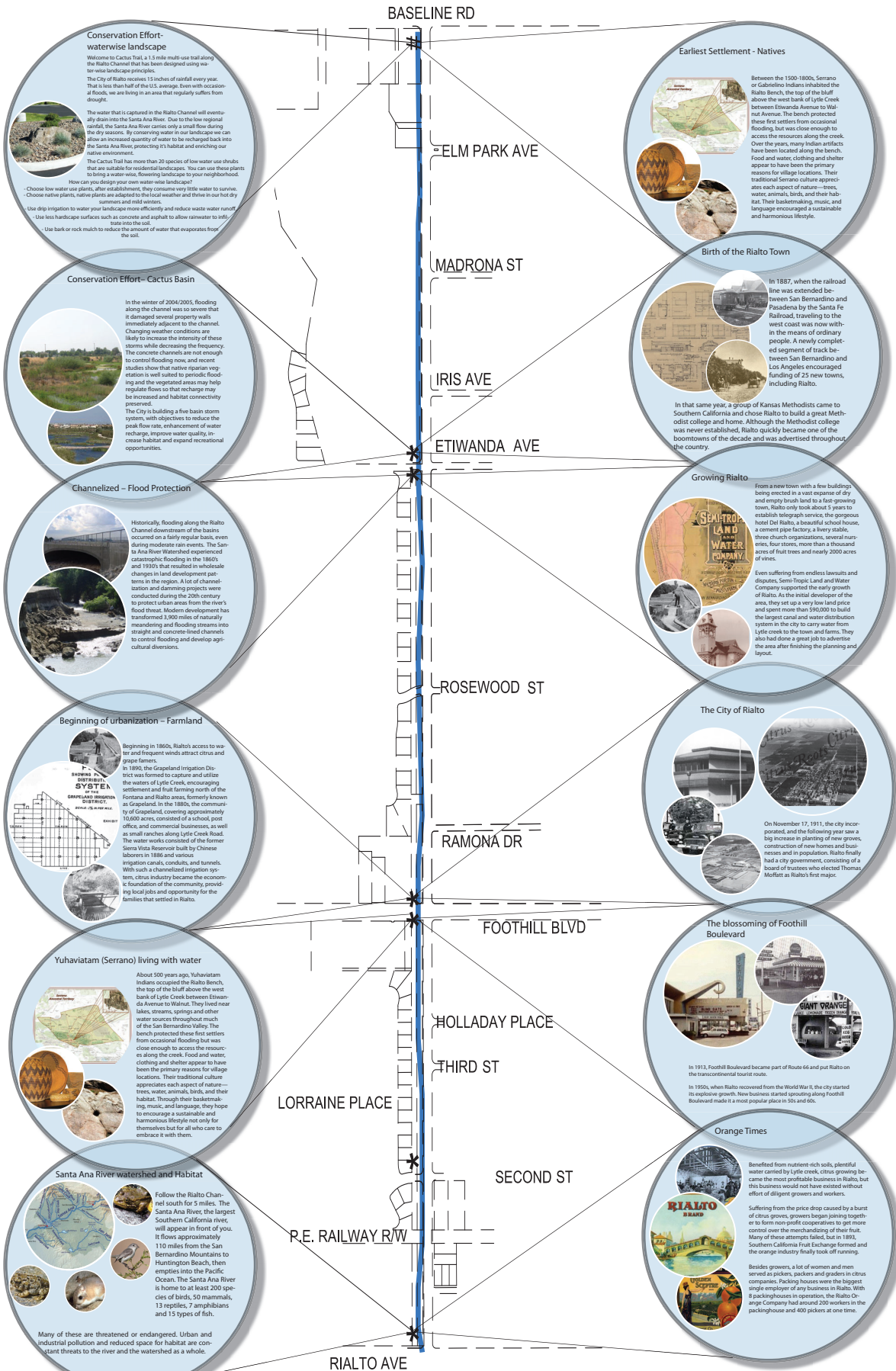
Hesperaloe parviflora
Red Yucca

NEIGHBORHOOD NODES ALTERNATIVE 2 CACTUS TRAIL RIALTO, CALIFORNIA



ALTERNATIVE 1 - THE HISTORY AND IMPORTANCE OF WATER IN THE CITY OF RIALTO

ALTERNATIVE 2 - THE HISTORY AND DEVELOPMENT OF THE CITY OF RIALTO



EDUCATIONAL SIGNAGE
CACTUS TRAIL RIALTO, CALIFORNIA



EXERCISE STATIONS

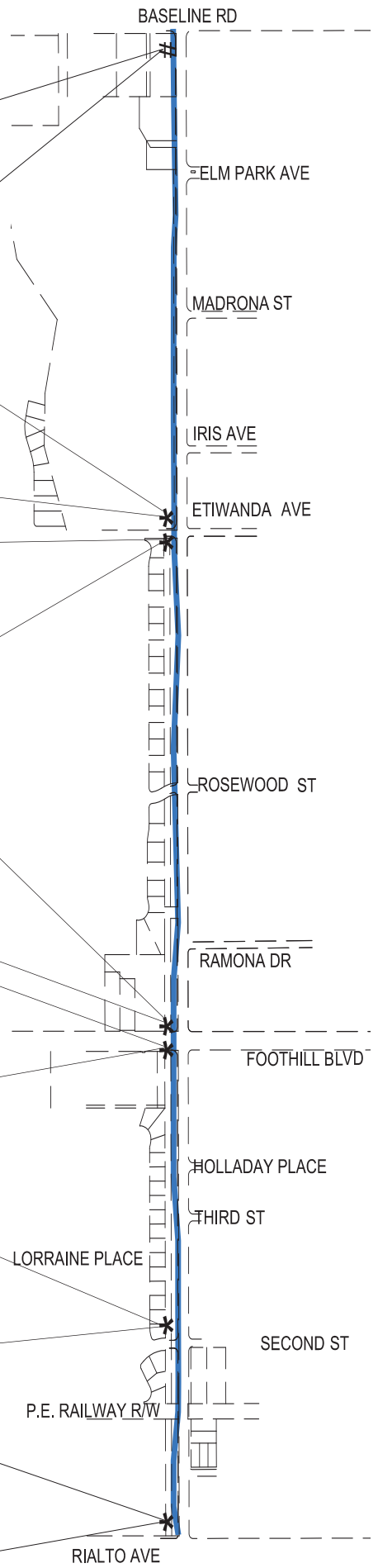
OPTION 1 - ACTIVE



OPTION 2 - STATIC



OPTION 3 - GAMIFICATION



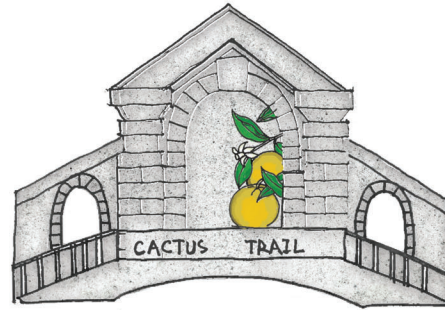
EXERCISE STATIONS
CACTUS TRAIL RIALTO, CALIFORNIA



MONUMENT SIGN OPTION 1
BRIDGE THEME



MONUMENT SIGN - CACTUS



MONUMENT SIGN - ORANGE

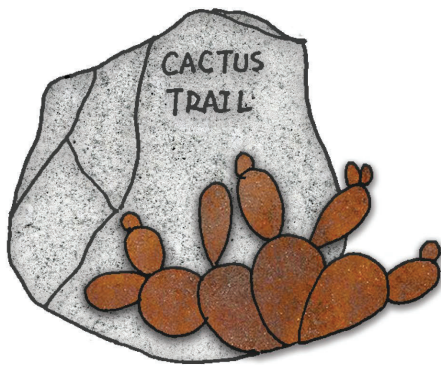


MONUMENT SIGN - ROUTE 66

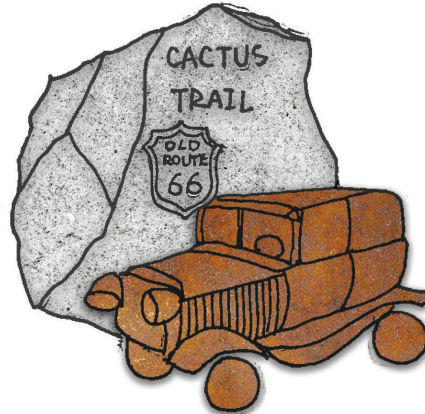


MONUMENT SIGN - TRAIN

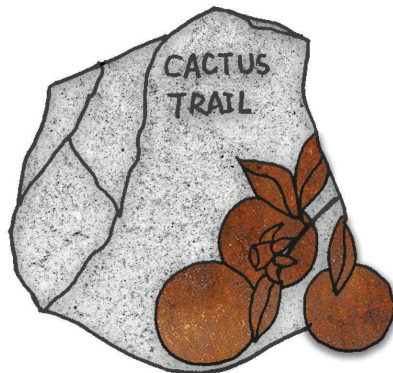
MONUMENT SIGN OPTION 2
RIVER ROCK THEME



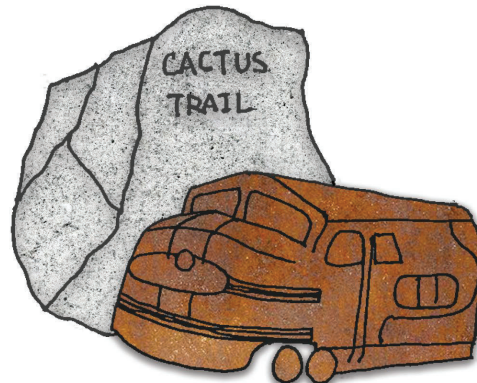
MONUMENT SIGN - CACTUS



MONUMENT SIGN - ROUTE 66



MONUMENT SIGN - ORANGE

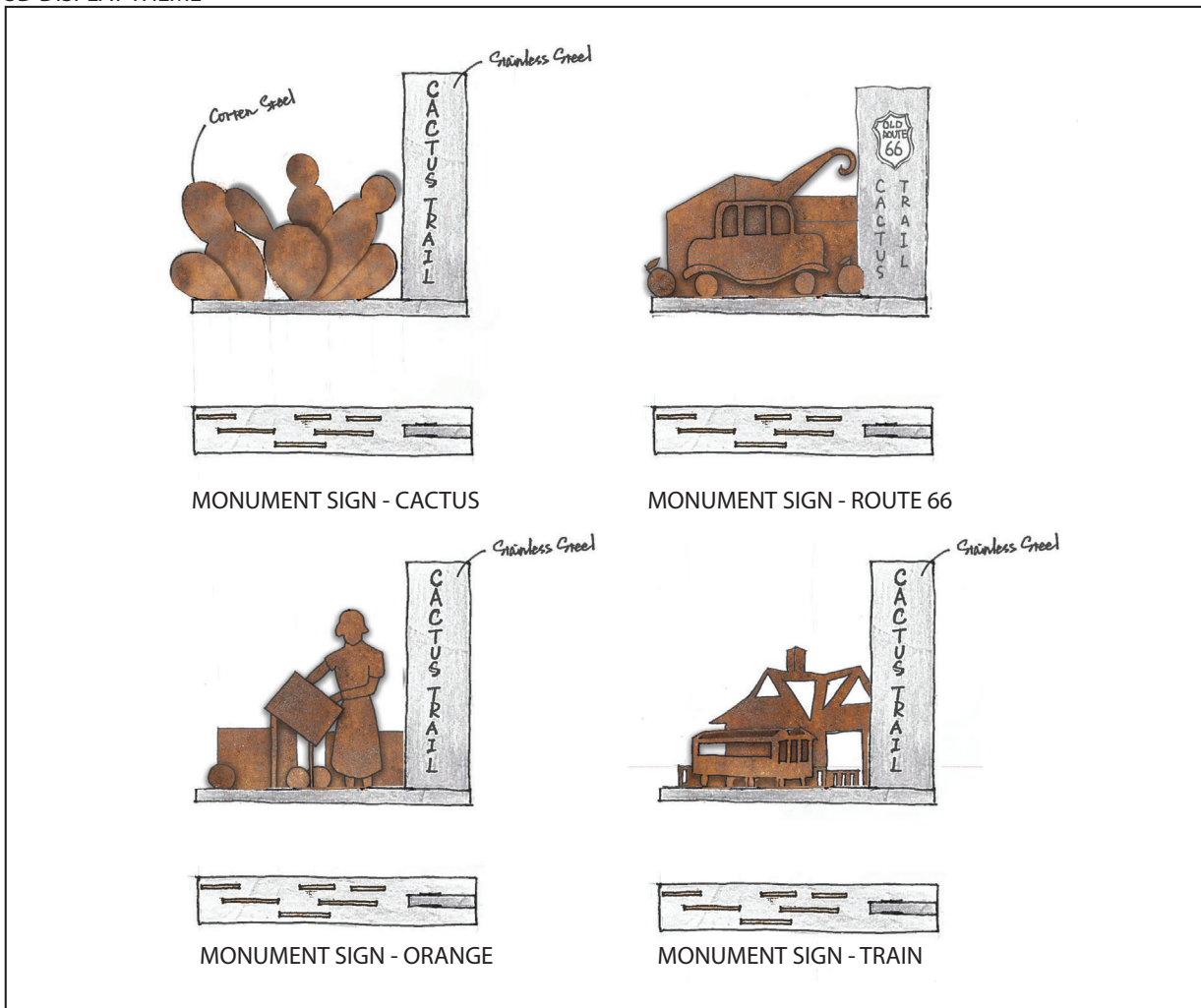


MONUMENT SIGN - TRAIN

MONUMENT SIGN OPTION 1&2
CACTUS TRAIL RIALTO, CALIFORNIA

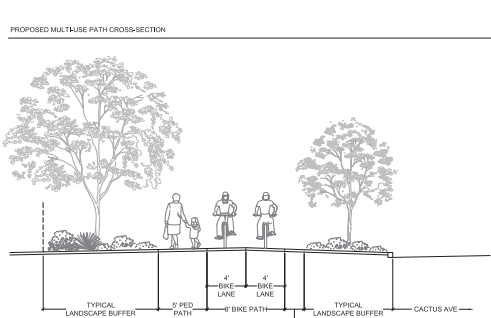
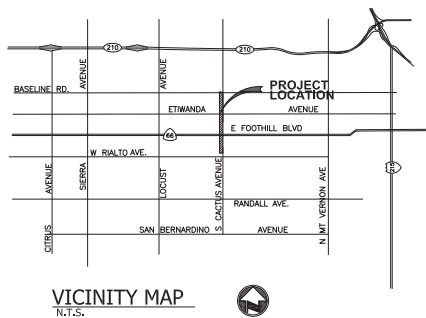


MONUMENT SIGN OPTION 3
3D DISPLAY THEME

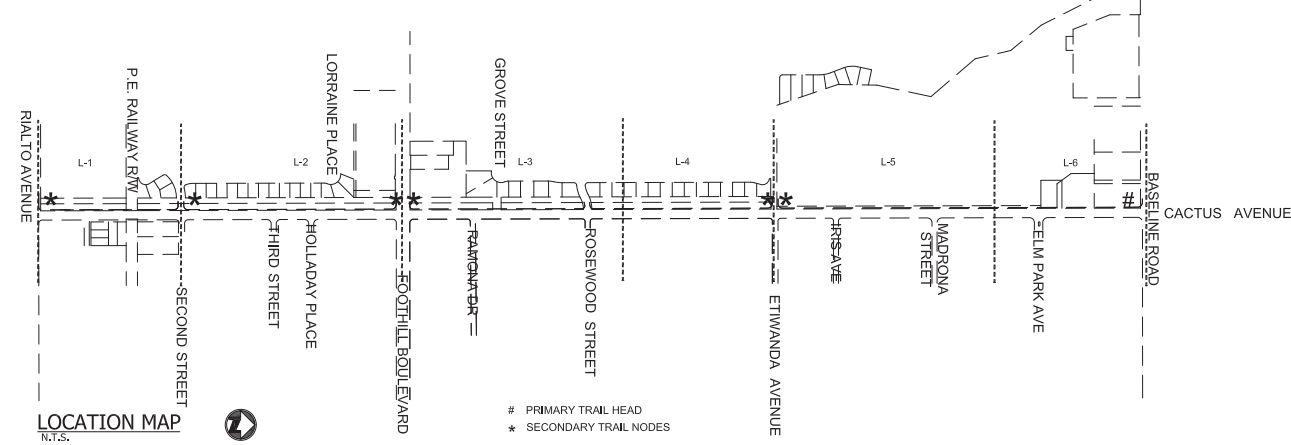


MONUMENT SIGN OPTION 4
ORANGE CRATE THEME





Sheet Index		
Sheet List Table		
Sheet Number	Sheet Description	Sheet Title
1	LT-1	TITLE SHEET
2	LP-1	LANDSCAPE PLAN
3	LP-2	LANDSCAPE PLAN
4	LP-3	LANDSCAPE PLAN
5	LP-4	LANDSCAPE PLAN
6	LP-5	LANDSCAPE PLAN
7	LP-6	LANDSCAPE PLAN



CONCEPT STATEMENT

The Cactus Trail Design concept is based on the History of Rialto, from the early Indian inhabitants, to the development of irrigation waterways and water rights, to the importance of saving water in modern times.

Drawing Inspiration from the formation of natural streams and the nearby channel, a grouted cobble seasonal 'dry streambed' meanders its way around the parking lot and out to the trail. Other hardscape materials like decomposed granite, seeded aggregate concrete and boulders create additional interest on the ground plane.

The primary trail head at Baseline and Catus Ave, takes advantage of additional space to create resting area with a primary monument, seating areas, and educational signage. Additional neighborhood nodes at the street intersections create other resting areas with seating and additional educational signage. Fitness nodes at trail heads encourage activity along the trail.

Educational signage will be used to tell the story of the history and water use in Rialto.

Planting schemes are drought tolerant and will include descriptions and educational signage for trail users. Two Planting schemes are used with a variety of species, forms and colors. Street trees are placed in groupings, with trees under 20' along the street under the power lines, and larger species used as a buffer along the channel. A two-rail horse fence provides a buffer between the channel and the trail.

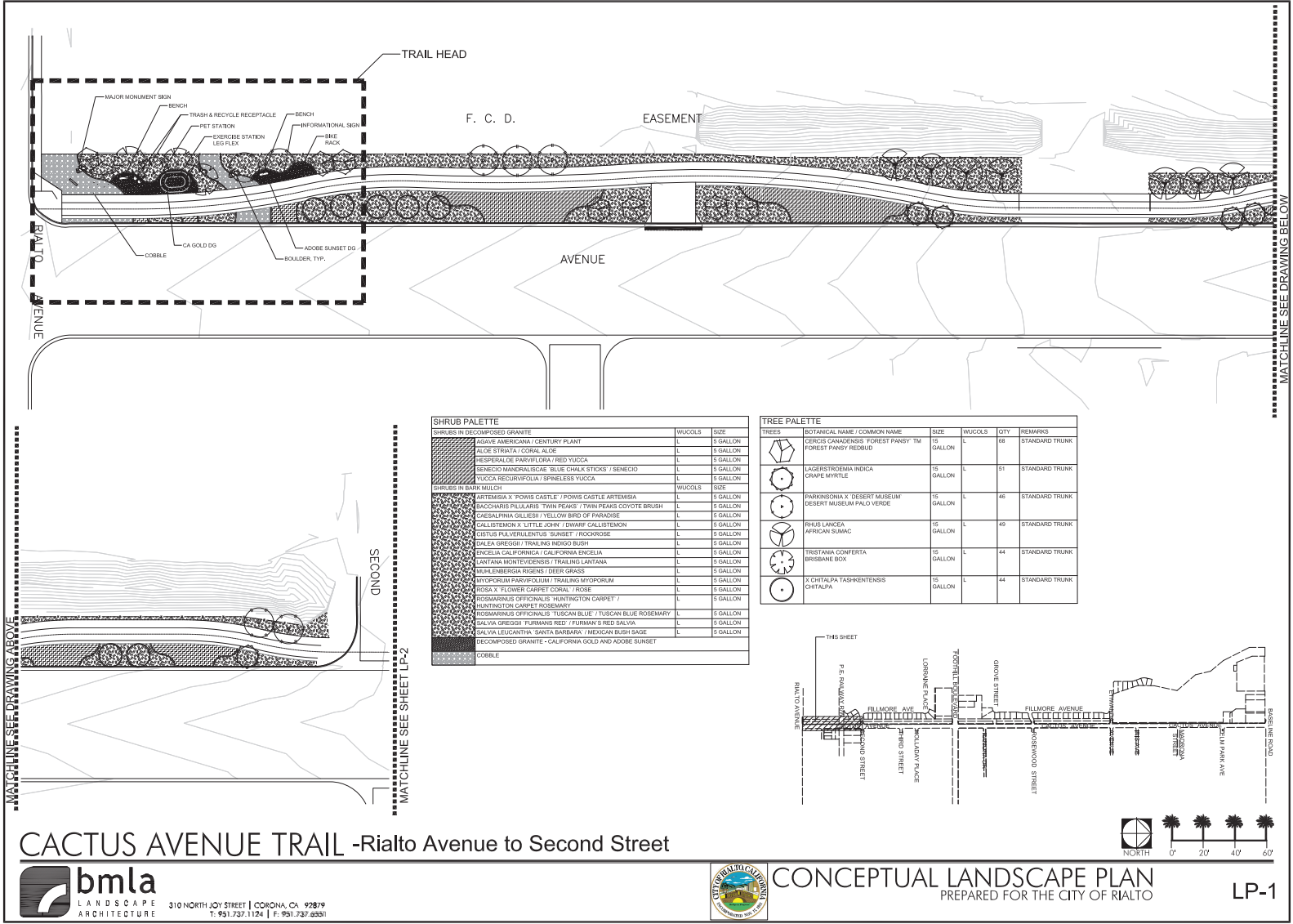
CACTUS AVENUE TRAIL

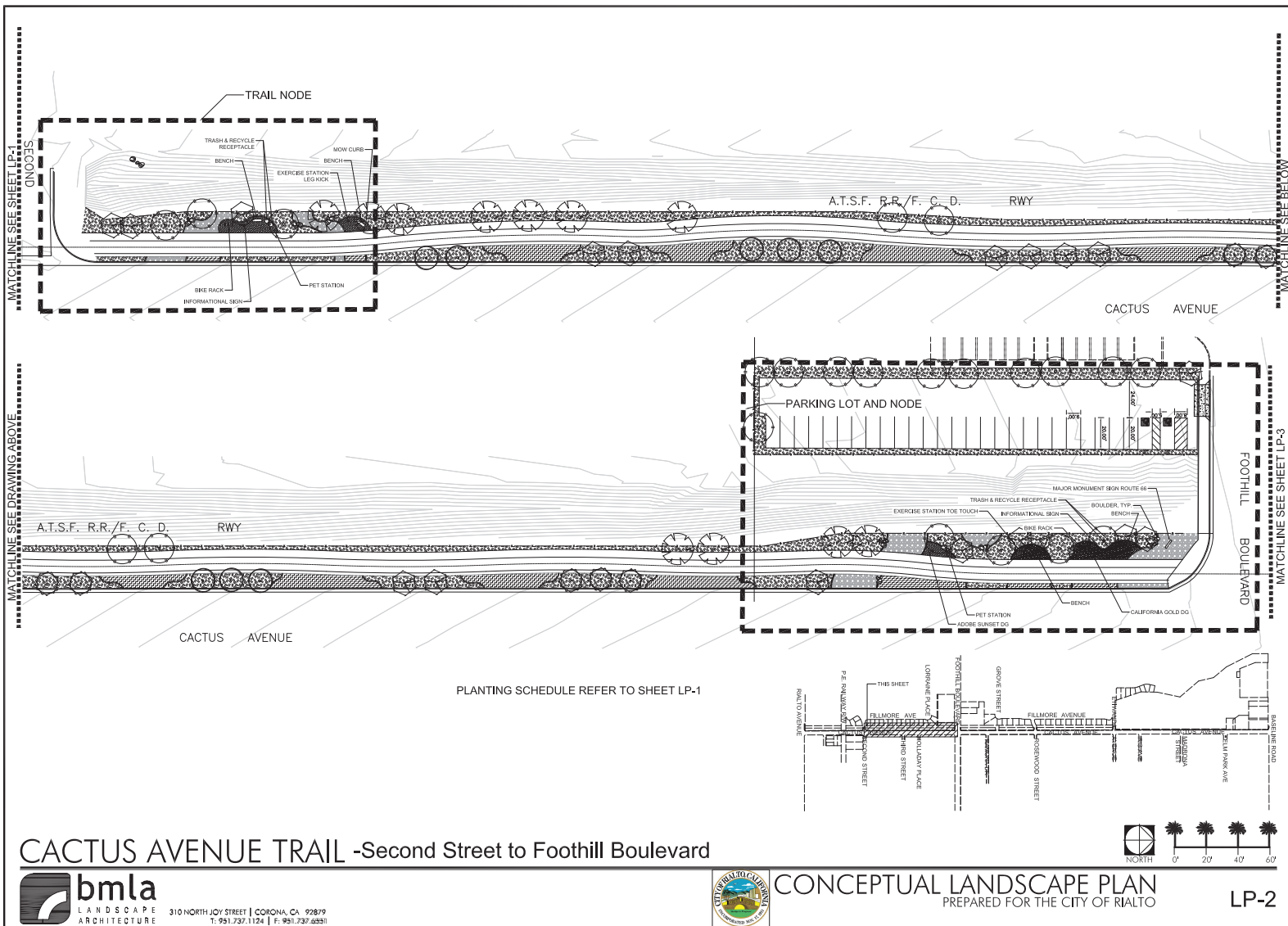


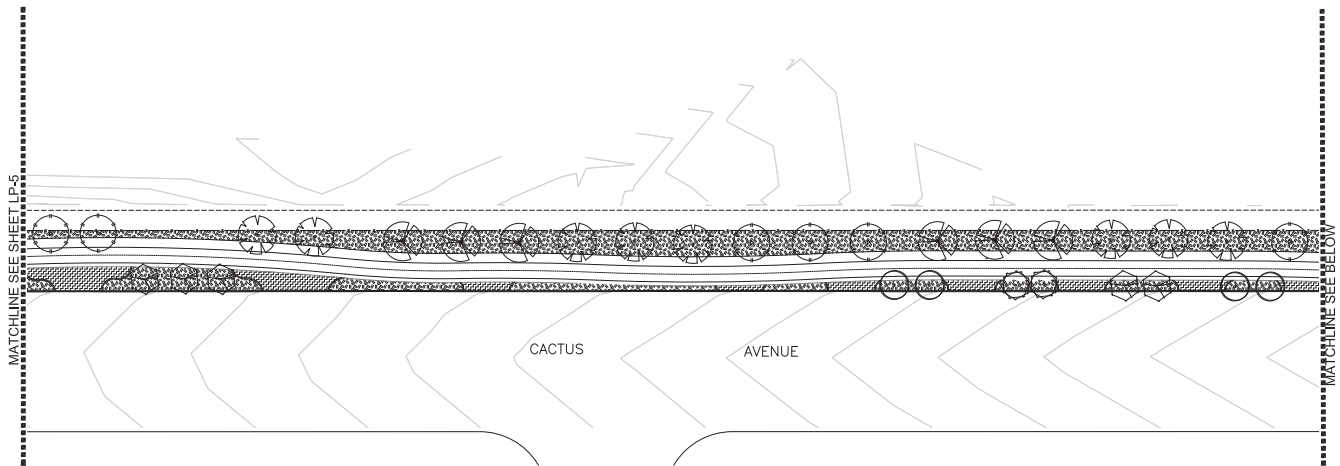
310 NORTH JOY STREET | CORONA, CA 92709
T: 951.737.1124 | F: 951.737.6551



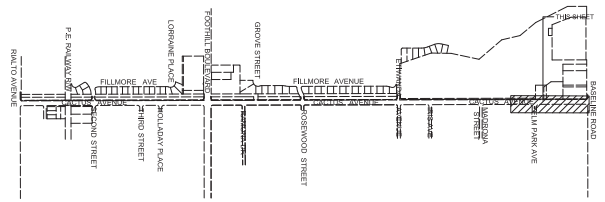
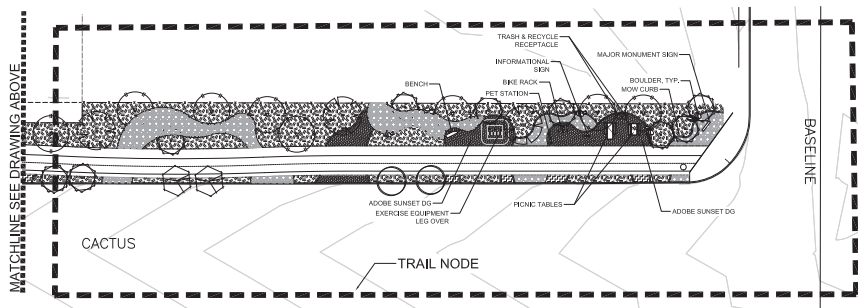
CONCEPTUAL LANDSCAPE PLAN
PREPARED FOR THE CITY OF RIALTO







PLANTING SCHEDULE REFER TO SHEET LP-1

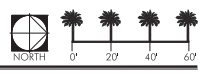


CACTUS AVENUE TRAIL -Etiwanda Avenue to Baseline Road

bmla
 LANDSCAPE ARCHITECTURE
 310 NORTH JOY STREET | CORONA, CA 92879
 T: 951.737.1124 | F: 951.737.4551



CONCEPTUAL LANDSCAPE PLAN
 PREPARED FOR THE CITY OF RIALTO



**ATTACHMENT 3
PROPOSED COOPERATIVE USE OF
SAN BERNARDINO COUNTY FLOOD CONTROL PROPERTY
SOUTHWEST CORNER BASELINE ROAD / CACTUS AVENUE
APN 0128-021-35**

Site Shown Below:



Existing Conditions:



Conceptual Trail Head:

