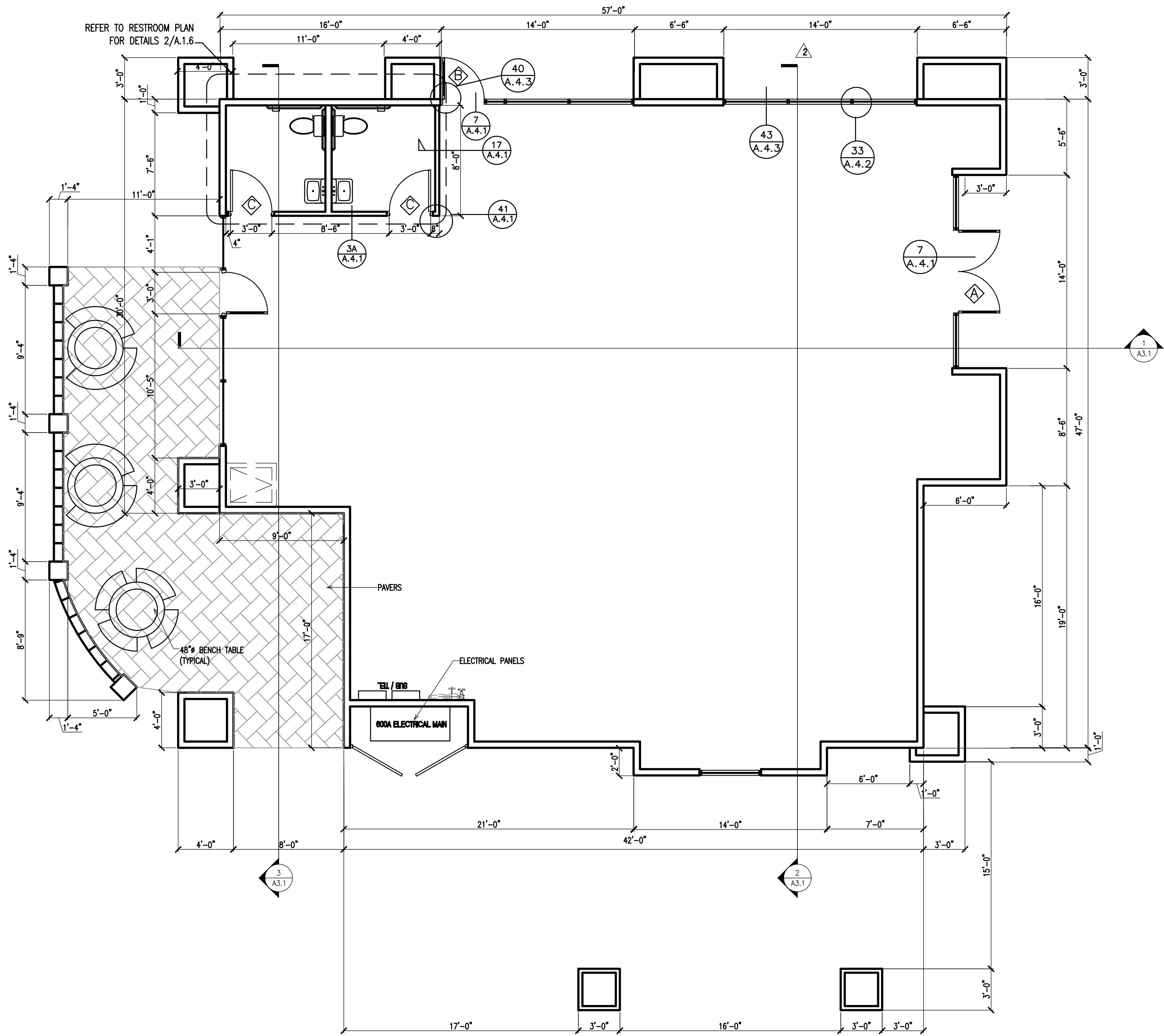


Knox boxes. The main entry doors to the building and at least one rear door, shall have, immediately adjacent to them, a Knox box to facilitate the entry of safety personnel. Knox boxes shall be installed in such a manner as to resist vandalism, removal, or destruction by hand, and be recessed into the building.



DOOR SCHEDULE		DOOR SCHEDULE NOTES	STOREFRONT NOTES	ROOM FINISH SCHEDULE		WALL LEGEND				
<div><div></div><div></div></div>	DESCRIPTION : 1 PR. 3'X 7' ALUMINUM DOOR W/ WEATHER-STRIPPING & 10" KICK PLATE	<div>1. Door handles, pulls, latches, locks and other operating devices shall be installed between 34 inches and 44 inches above finish floor and shall not require tight grasping, tight pinching or twisting of the wrist to operate. 2016 CFC, Sections 1010.1.9.1, 1010.1.9.2</div> <div>2. The unlatching of any door or leaf shall not require more than one operation. 2016 CFC, Section 1010.1.9.5</div>	<div>1. STOREFRONT: AL. FRAME AS MANUFACTURED BY VISTAWALL OR EQ., SERIES PER GLAZING REQMTS., 2" X 4 1/2". FRONT LOADED GLAZING, w/ CLEAR ANODIZED ALUMINUM FINISH, ALTERNATE AND EQUIVALENT STOREFRONT FRAME AS MANUFACTURED BY U.S. ALUMINUM OR OTHER AS APPROVED BY CHEVRON REPRESENTATIVE.</div> <div>2. STANDARD STOREFRONT GLAZING SHALL BE 1/4" CLEAR TEMPERED GLASS. (TYP.)</div> <div>3. VERIFY ALL WINDOW SIZES IN FIELD PRIOR TO FABRICATION.</div> <div>4. GLAZING AND STOREFRONTS SHALL CONFORM TO LOCAL WIND LOAD REQUIREMENTS. GLAZING MATERIAL THICKNESS, AND LAMINATION AND/OR MULLION DESIGN IS SUBJECT TO CHANGE.</div>	INTERIOR FINISHES	SHELL BUILDING INTERIOR	<div>2X6 SOUNDWALL W/ STAGGERED 2X4 STUDS @ 16" O.C. W/ 3-1/2" ACOUSTIC BATT INSULATION AND 5/8" GYP. BD. ON EACH FACE.</div> <div>2X4 WALLS W/ 5/8" GYP. BD. ON EACH FACE U.O.N.</div>				
	HANGING DEVICES : (6) MCKINNEY TH2314/MPB91			FLOOR	CONCRETE W/CLEAR SEALER					
	SECURING DEVICES : (1) ADAMS RITE MS1850S DEADBOLT (INACTIVE LEAF)			BASE	NONE					
<div><div></div><div></div></div>	(1) ADAMS RITE MS1880 TWO-POINT FLUSHBOLT									
	(2) FALCON LOCK C607 7-PIN CORE COMBINATED "A" KEY								WALLS	SMOOTH FINISH 5/8" GYP BOARD
	(1) FALCON LOCK KB609-2 CUT CONTROL KEY "A" KEYWAY								CEILING	OPEN CEILING TO DECK ABOVE
(9) FALCON LOCK KB632-2 CUT USER KEY "A" KEYWAY	CEILING HEIGHT								OPEN TO DECK ABOVE	
(2) FALCON LOCK C987 7-PIN MORTISE CYLINDER HOUSING w/AR CAM	<div>NOTES</div> <div>1. 3-PART EPOXY BY PPG. PRIMER: APPLY PPG 97-685/686 AQUAPON TWO COMPONENT POLYAMIDE EPOXY BLOCK FILLER AT THE RECOMMENDED WET FILM THICKNESS OF 20-40 MILS (MAXIMUM 24 MILS DFT) PER COAT, UNREDUCED.; INTERMEDIATE FINISH: APPLY PPG 97-130/139 AQUAPON HI-BUILD POLYAMIDE EPOXY AT THE RECOMMENDED WET FILM THICKNESS OF 7-10 MILS (4-6 MILS DFT) PER COAT, UNREDUCED.; FINISH: APPLY PPG PITTHANE 97-850 LOW VOC TWO COMPONENT ALIPHATIC ACRYLIC URETHANE AT THE RECOMMENDED WET FILM THICKNESS OF 4-5 MILS (2 MILS DFT) PER COAT, UNREDUCED.</div> <div>2. NEW CONCRETE/ MASONRY SUBSTRATES TO RECEIVE 3-PART EPOXY, MUST BE EVALUATED PRIOR TO COATING TO INSURE THE PH AND MOISTURE CONTENT IS WITHIN ACCEPTABLE PARAMETERS (PH BELOW 9.0 AND MOISTURE BELOW 12%).</div> <div>3. ALTERNATE MATERIAL FOR CARWASH, UPON APPROVAL OF THE CHEVRON REPRESENTATIVE: SPECTRA-GLAZE II 8x8x16 GLAZED CMU BLOCK.</div>									
(2) FALCON LOCK A08794-003 ADJUSTABLE RING, MORTISE CYLINDER 5/16 3/32										
ACCESSORIES : (1) NATIONAL GUARD C607A DOOR SWEEP 36"										
OPERATING TRIM : (2) ROCKWOOD 108 DOOR PULL HANDLE										
OPERATING TRIM : (2) ROCKWOOD 48 PUSH BAR X 31										
CLOSING DEVICES : (1) DORMA 8916 DOOR CLOSER 8916 AF89P										
PROTECTIVE TRIM : (1) ROCKWOOD K1050 B4E KICK PLATE 10"x34"										
STOPS & HOLDERS : (1) NATIONAL GUARD C607A DOOR SWEEP 36"										
ACCESSORIES : (1) 325 HALF SADDLE THRESHOLD										
<div><div></div><div></div></div>	DESCRIPTION : (1) 3'X 7' ALUMINUM DOOR W/ WEATHER-STRIPPING & 10" KICK PLATE									
	HANGING DEVICES : (3) MCKINNEY TH2314/MPB91									
	SECURING DEVICES : (1) FALCON LOCK C607 7-PIN CORE COMBINATED "A" KEYWAY									
<div><div></div><div></div></div>	(1) SUR-LOCK I/O 2000L-031C AUTO LOCKING DOOR ALARM									
	IC: NO CTR INCLUDES MORTISE CYLINDER									
	CLOSING DEVICES : (1) DORMA 8916 DOOR CLOSER 8916 AF89P									
PROTECTIVE TRIM : (1) ROCKWOOD K1050 B4E KICK PLATE 10"x34"										
ACCESSORIES : (1) NATIONAL GUARD 1379A WEATHER STRIP 17"x36"x84"										
ACCESSORIES : (1) NATIONAL GUARD C607A DOOR SWEEP 36"										
MISCELLANEOUS : (1) SECURITY PRODUCTS DS-6 DOOR SPY										
STOPS & HOLDERS : (1) ROCKWOOD 473 DOOR STOP WITH HOOK										
THRESHOLD : (1) 325 HALF SADDLE THRESHOLD										
<div><div></div><div></div></div>	DESCRIPTION : 3'X 7' WOOD TRIM DOOR									
	HINGES : 1 1/2 PR. 4 1/2 x 4 1/2 BUTT HINGES									
	HARDWARE : SCHLAGE OLYMPIAD D50 PD-260 (LEVEL HANDLES)									
DOOR CLOSER : INTERNATIONAL #54 ALUMINUM										

REVISIONS

NO.	DATE	DESCRIPTION
1	03/19/21	REVISED PER PLANNING
2	07/21/21	REVISED PER PLANNING

DESIGN

CONSTRUCTION

Design

Planning

Permitting

CJC Design, Inc.

22485 La Palma Avenue, Suite 202, Yorba Linda, CA 92887

Ph: (714) 929-8653

Fax: (714) 917-0250

www.cjcorp.com

PROJECT:

2089 AYALA DRIVE

RIALTO, CA. 92377

FLOOR PLAN

DATE ISSUED:

12/08/20

SCALE:

3/16"=1'-0"

DRAWN BY:

F. COHEN

CHECKED BY:

PROJECT NUMBER:

20050

STORE NUMBER:

RIALTO

SHEET:

A.11