



hpa, inc.
18831 bardeen avenue, - ste. #100
irvine, ca
92612
tel: 949-863-1770
fax: 949-863-0851
email: hpa@hparchs.com



Owner:

THRIFTY OIL CO.

13116 Imperial Highway
Santa Fe Springs CA 90670
tel: 562-921-3581



Project:

Locust
and
Lowell

NWC of Locust and Lowell
Rialto CA



Consultants:

CIVIL	Kimley Horn
STRUCTURAL	-
MECHANICAL	-
PLUMBING	-
ELECTRICAL	-
LANDSCAPE	Hunter Landscape
FIRE PROTECTION	-
SOILS ENGINEER	-



Title: overall floor plan

Project Number: 21180

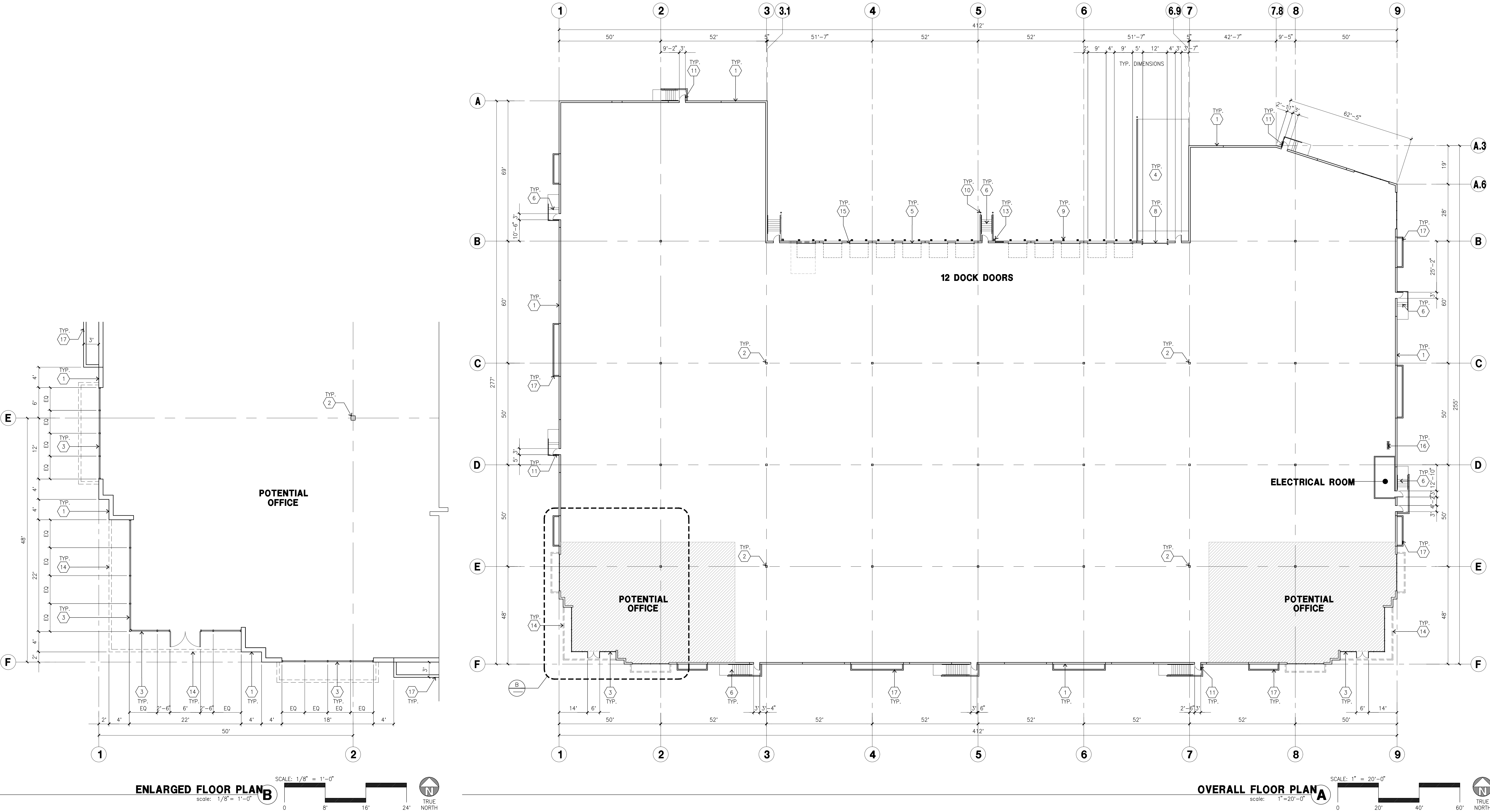
Drawn by: J.K.

Date: 1/14/2022

Revision:

Sheet:

DAB-A2.1



KEYNOTES - FLOOR PLAN

- 1 CONCRETE TILT-UP PANEL.
- 2 STRUCTURAL STEEL COLUMN.
- 3 TYPICAL STOREFRONT SYSTEM WITH GLAZING. SEE OFFICE BLOW-UP AND ELEVATIONS FOR SIZE, COLOR AND LOCATIONS.
- 4 CONCRETE RAMP W/ 42"HIGH CONC TILT-UP GUARD WALL OR BUILDING WALL ON BOTH SIDE OF RAMP.
- 5 9'-0" X 10' TRUCK DOOR, SECTIONAL O'H., STANDARD GRADE.
- 6 EXTERIOR CONCRETE STAIR
- 7 5'-6"x5'-6"x4" THICK CONCRETE EXTERIOR LANDING PAD TYPICAL AT ALL EXTERIOR MAN DOORS TO LANDSCAPED AREA. FINISH TO BE MEDIUM BLOOM FINISH. SLOPE TO BE 1/4" : 12" MAX. PROVIDE WALK TO HARD SURFACE PER CITY REQUIREMENTS.
- 8 12' X 14' DRIVE THRU. SECTIONAL O'H., STANDARD GRADE.
- 9 DOCK DOOR BUMPER
- 10 CONC. FILLED GUARD POST. 6" DIA. U.N.O.. 42"H.
- 11 3'X7' HOLLOW METAL EXTERIOR MAN DOOR.
- 12 SOFFIT LINE ABOVE
- 13 EXTERIOR DOWNSPOUT WITH OVERFLOW SCUPPER.
- 14 TUBE STEEL CANOPY.
- 15 Z GUARD
- 16 BIKE RACK
- 17 NON-STRUCTURAL ARCHITECTURAL TREATMENT WITH SMOOTH PLASTER FINISH

GENERAL NOTES - FLOOR PLAN

- A. THIS BUILDING IS DESIGNED FOR HIGH PILE STORAGE WITH FIRE ACCESS MAN DOORS AT 100' MAXIMUM O.C. A SEPARATE PERMIT WILL BE REQUIRED FOR ANY RACKING/CONVEYER SYSTEMS.
- B. FIRE HOSE LOCATIONS SHALL BE APPROVED PER FIRE DEPARTMENT.
- C. THE BUILDING FLOOR SLAB IS SLOPED, SEE "C" DRAWINGS FOR FINISH SURFACE ELEVATIONS.
- D. NOT USED
- E. WAREHOUSE INTERIOR CONCRETE WALLS ARE PAINTED WHITE. COLUMNS ARE TO RECEIVE PRIMER ONLY. ALL GYP. BD. WALLS IN WAREHOUSE TO RECEIVE 1 COAT OF WHITE TO COVER.
- F. SLOPE POUR STRIP 1/2" TO EXTERIOR AT ALL MANDOOR EXITS. SEE "S" DRAWINGS FOR POUR STRIP LOCATION.
- G. ALL DIMENSIONS ARE TO THE FACE OF CONCRETE PANEL WALL, GRIDLINE, OR FACE OF STUD U.N.O..
- H. SEE CIVIL DRAWINGS FOR POINT OF CONNECTIONS TO OFF-SITE UTILITIES. CONTRACTOR TO VERIFY ACTUAL UTILITY LOCATIONS. PLUMBING/ELECTRICAL COORDINATION.
- I. FOR DOOR TYPES AND SIZES. SEE DETAIL SHEET AD.4. NOTE: ALL DOORS PER DOOR SCHEDULE ARE FINISH OPENINGS.
- J. CONTRACTOR TO PROTECT AND KEEP THE FLOOR SLAB CLEAN. ALL EQUIPMENT TO BE DIAPERED INCLUDING CARS AND TRUCKS.
- K. ALL EXIT MAN DOORS IN WAREHOUSE TO HAVE ILLUMINATED EXIT SIGN. HARDWARE.
- L. HIGHLY FLAMMABLE AND COMBUSTIBLE MATERIAL SHALL NOT BE USED OR STORED IN THIS BUILDING.
- M. EACH EXTERIOR EXIT DOOR SHALL BE IDENTIFIED BY A TACTILE EXIT SIGN WITH THE WORDS "EXIT". THE MOUNTING HEIGHT FOR SUCH SIGNAGE SHALL BE 60" FROM FINISH FLOOR LEVEL TO THE CENTER OF THE SIGN.
- N. NON-ACCESSIBLE DOOR. PROVIDE WARNING SIGN LOCATED IN THE INTERIOR SIDE PER CBC 1133B.1.1.1
- O. ALL ROOF MOUNTED MATERIALS SHALL BE FULLY SCREENED FROM PUBLIC VIEW. SEE A/44.1 OFFICE SECTION.