



Myers and Sons Hi-Way Safety Inc.

Main Office:

13310 5th Street, Chino Ca 91710

Tel (909) 591-1781 Fax (909) 627-0999

Escondido Office:

520 W. Grand Ave, Escondido CA 92025

Tel (760) 745-2250 Fax (760) 745-2094

Sacramento Office:

9510 Jackson Rd. Sacramento Ca 95827

Tel (916) 273-1600 Fax (916) 273-1625

SALES QUOTATION

Original

Quotation No: 15409
 Quotation Date: 11/14/17
 Valid Until: 03/30/18
 Customer No: C3506
 P.O. No:
 Page No: Page 1 of 1

BILL TO

City of Rialto
 150 S. Palm Avenue
 Rialto CA 92376

SHIP TO

Police Department
 128 N. Willow Ave
 Rialto CA 92376

TOTAL

\$ 17,911.88

Sales Employee: Abdel Ramos
 Contact Name: Ron Russo
 Telephone: 909-820-2525
 Terms: NET 30

Ship Via: Our Truck
 FOB:

Item No.	Description	Quantity	Unit Price	Total
103315	Message Board, Trailer, 96L3, 96x48, Full Matrix LED, 150w Solar, 4-6v Batt, Hydraulic Lift & Rota	1.00	\$ 13,778.55	\$ 13,778.55
103577	Graffiti overlay 1160	1.00	\$ 200.00	\$ 200.00
104796	Cone Holder, Trailer Mount, Bolt On, for CMS BOARD	1.00	\$ 250.00	\$ 250.00
103577	Battery charger	1.00	\$ 250.00	\$ 250.00
103577	wireless modem 3G LS3000 remote programming GPS tracking 5 year service included	1.00	\$ 1,495.00	\$ 1,495.00
103577	6 volts batteries added	2.00	\$ 325.00	\$ 650.00
Subtotal				\$ 16,623.55
				0.00
Shipping				0.00
Tax				\$ 1,288.33
Total Order Value				\$ 17,911.88

Signature _____

Date _____

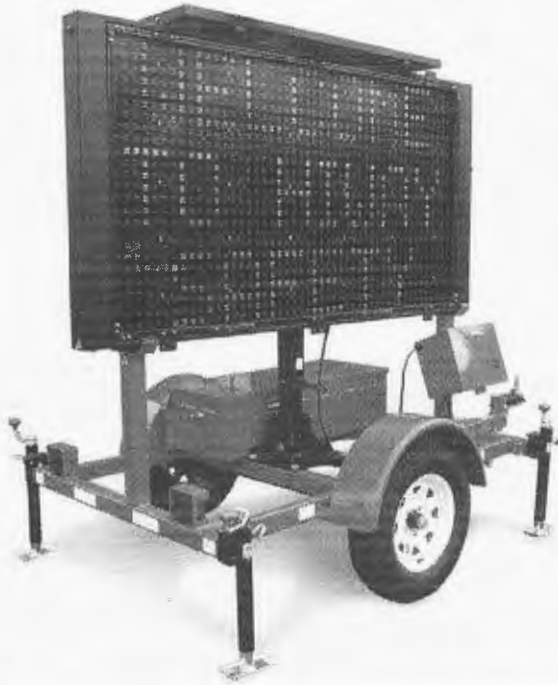
Print Name _____

Authority to Sign:

Any individual signing represents and warrants that he/she of legal age and has the authority and power to sign on thier own behalf or on behalf of thier employer

1. This quotation will be honored for 30 days.
2. All customer orders are non-refundable.
3. Sales terms & conditions apply.

Model 96L 3 Message Board Trailer



Trailer:

- 126" overall trailer length
- 72.5" overall trailer width
- MIG welded 2"x3" and 3"x3" steel tubing
- Durable powder coat finish provides excellent resistance from the elements
- Outriggers are integrated into the frame for added stability in high wind
- 3,500 lb capacity spring axle
- 62" track Leaf spring suspension
- 205/75 D15 Tires
- 2" ball coupler tow hitch standard

Power:

- Highly efficient solar panel system for dependable charging of the long-life batteries
- Tilt solar panels to optimize exposure
- (4) 6 volt deep cycle batteries
- 120 watts of solar power
- 17.4 panel voltage

The Myers and Sons Hi-Way Safety message board model 96L 3 has been manufactured to the highest standards to provide exceptional performance with extreme durability. Long lasting, energy efficient L.E.D. display provides crisp, clear characters with no moving parts and requiring no maintenance. The L.E.D. intensity remains constant regardless of battery voltage fluctuation to assure legibility distant requirements are met at all times. The full-matrix display allows you to display messages using text and/or graphic symbols. Our products are designed to withstand the high demands placed on them in an industry known for it's tough conditions. We have been a leader in the traffic control industry since 1970 and are proud to integrate this experience into each of our products.

Display:

- Cabinet is 95.5" wide x 48" high
- Full-matrix .75"x.75" pixel size display is capable of display both characters and symbols
- Store of preprogrammed messages and ability to store 100 user originated messages.
- Capable of multiple page messages controllable in 1/4 second increments
- Highly visible and legible In both day and night conditions
- Display automatically adjusts to ambient light conditions
- Message display is easy to raise and lower using the convenient hydraulic lift
- Text formatting is easily performed on the on board computer
- Front face of display protected by UV inhibited polycarbonate

Myers & Sons
HI-WAY SAFETY Inc. your worksite armor
800.228.1701



Variable Message Trailer 96L3

The Highway Safety Products message board model 96L3 has been manufactured with a fully welded steel frame to provide exceptional performance with extreme durability.

- Long lasting, energy efficient LED's
- Hydraulic lift and rotate display
- Full matrix display board
- Solar charging system
- Tamper resistant steel enclosure
- Welded steel frame with steel fenders
- Durable powder coat finish
- Interchangeable hitch
- Manufactured in the USA



Protective Lock

- Vandal resistant
- Steel reinforced bracket and box
- Protects batteries and pump
- Unique heavy duty lock available



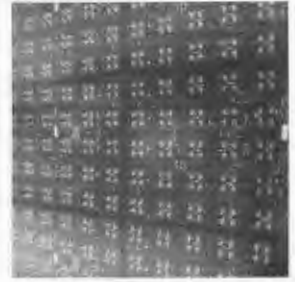
Stabilizer Jacks

- On extendable outriggers
- Easily level the trailer
- Increases footprint for stability
- Fold for transport



Hydraulic Lift System

- Easily raise and lower Display cabinet
- Single person operation
- Easy maintenance
- Protected by battery box



Full Matrix Display

- Displays text or symbols
- Protected by UV polycarbonate
- Highly visible in all conditions
- Easy to program



The 96L3 control panel has an onboard computer allowing you to edit and create messages easily without the need for an external computer or laptop. Capable of multiple page messages controllable in 1/4 second increments. The display can project both 12 inch and 18 inch characters as well as graphic symbols.

Features:

- (4) LED units per pixel
- 250 pre-programmed messages
- Storage for up to 100 user created messages
- Full QWERTY keyboard
- 100 millisecond update speed