



NPDES Street Sweeping Enforcement

Economic Development
Committee Presentation
April 25, 2018

Street Sweeping



- ▶ Environmental best management practice for NPDES programs.
- ▶ Quality of Life improvement
- ▶ Helps remove trash, leaves and debris from the gutter system
- ▶ Reducing potential pollutants from affecting downstream watersheds.
- ▶ Enhances the aesthetic appearance of residential and commercial neighborhoods.

Street Sweeping Effectiveness



- ▶ Street sweeping effectiveness is severely hampered by the number of vehicles parked on sweeping days.
- ▶ September 2016 had 15,058 vehicles parked during sweeping.

Date	Service Day	Parked Cars	Notes
9/7/2016	Tuesday 1 & 3	756	Holiday
9/8/2016	Wednesday 1 & 3	980	Holiday
9/9/2016	Thursday 2 & 4	1259	Holiday
9/10/2016	Friday 2 & 4	0	No Count Provided
9/12/2016	Monday 2 & 4	818	
9/13/2016	Tuesday 2 & 4	768	
9/14/2016	Wednesday 2 & 4	800	
9/15/2016	Thursday 1 & 3	1028	
9/16/2016	Friday 1 & 3	968	
9/19/2016	Monday 1 & 3	875	
9/20/2016	Tuesday 1 & 3	1359	
9/21/2016	Wednesday 1 & 3	869	
9/22/2016	Thursday 2 & 4	986	
9/23/2016	Friday 2 & 4	750	
9/26/2016	Monday 2 & 4	880	
9/27/2016	Tuesday 2 & 4	675	
9/28/2016	Wednesday 2 & 4	1287	
9/29/2016	No Sweeping		Week 5
9/30/2016	No Sweeping		Week 5
	Total	15,058	

Street Sweeping Effectiveness

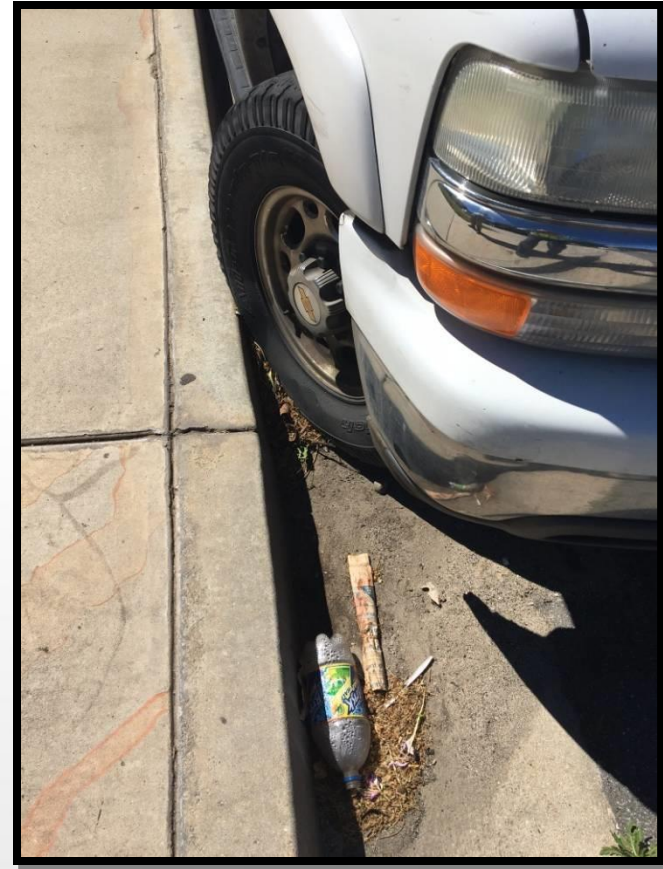
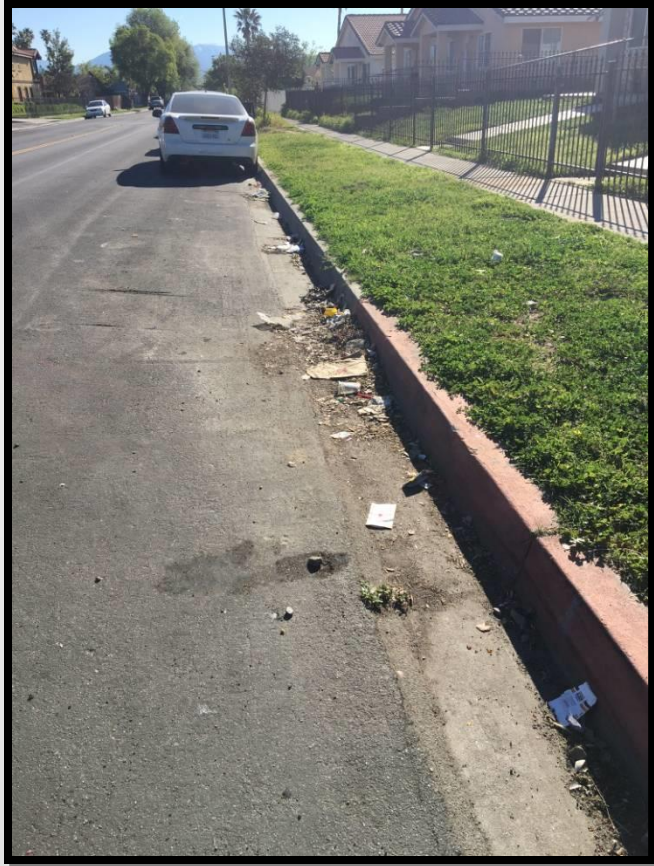


- ▶ Parked cars inhibit the Street Sweeper's effectiveness by preventing the sweeper from sweeping against the curb by the parked vehicle.
- ▶ 40 to 60 feet of curb unswept at each parked vehicle.
- ▶ There are approximately 180,700 vehicles per year blocking the street sweeping operation.

Street Sweeping Effectiveness



Street Sweeping Effectiveness



Street sweeping Effectiveness



Street Sweeping



- ▶ In FY15–16, the City collected nearly 2,571,300 pounds of street sweeping debris or approximately 214,300 pounds per month.
- ▶ Burrtec sweeps approximately 958 curb miles per month or 11,504 miles per year.
- ▶ Currently sweeping picks up 223 pounds per curb mile of sweeping with the existing vehicles blocking the sweeper.
- ▶ It is estimated that 1,711 miles or 14.9% of curbs are not being swept per year.
- ▶ This equals an additional 224 tons of debris left on the street each year, equivalent of 22 trash trucks.

Vehicle Code –



- ▶ Section 22507.6 of the California Vehicle Code permits local authorities to establish by ordinance or resolution a prohibition or restriction on the parking or standing of vehicles for the purpose of street sweeping.
 - Several cities currently prohibit parking on the day of the street sweeping between the hours of sweeping operations, typically between 8AM and 4PM.
 - These cities include Chino, Grand Terrace, Riverside, Perris, San Jacinto and Lake Elsinore.

Proposed Sweeping Enforcement Program



- ▶ Street sweeping enforcement will be conducted by the Police Department's Traffic Enforcement Division.
- ▶ Parking enforcement officers will be assigned to follow the sweeper on its route and issue citations under existing Municipal Code.
- ▶ Citations would only be issued once the sweeper passes around a parked vehicle.



Citation Processing

- ▶ DataTicket of Costa Mesa, California currently provides citation processing services to the City of Rialto including:
 - Payment processing.
 - Appeals Management.
 - Transmitting unpaid citations to the Department of Motor Vehicles.
 - Uses hand-held citation units which integrate electronically to expedite processing.

Signage



Zone	1st & 3rd Week	2nd & 4th Week	Total Signs
1	Monday	-	150
2	Tuesday	-	235
3	Wednesday	-	111
4	Thursday	-	144
5	Friday	-	128
6	-	Monday	124
7	-	Tuesday	297
8	-	Wednesday	135
9	-	Thursday	142
10	-	Friday	92
11	-	Monday	40
12	Tuesday		50
		Total:	1648

Alternate Schedule



- ▶ Some areas of the City may be placed on an “alternate side/alternate day” schedule.
 - Multifamily residential areas with limited off-site parking.
 - Industrial areas with narrow roadways.

Split Enforcement Periods



- ▶ Per day enforcement period to be split per zone:
 - 7:30 to 12:00 for morning routes.
 - 11:00 to 4:00 for afternoon routes.
- ▶ Designed to minimize the disruption of residents parking activities to smallest possible window.
- ▶ 10 hours per month of inconvenience to resident's ability to park.

Outreach/Education Plan



- ▶ Bilingual Materials
- ▶ Web/App Based Reminder Notification System
- ▶ Flyers/Brochures
- ▶ Website and Social Media
- ▶ Nixel and Next Door Apps
- ▶ Mailer inserts with Rialto Water Service & Burrtec Customers.
- ▶ Rialto Progress Magazine & Monthly CA Report
- ▶ Sixty-Day “Grace Period” Education Enforcement

Enforcement Approach



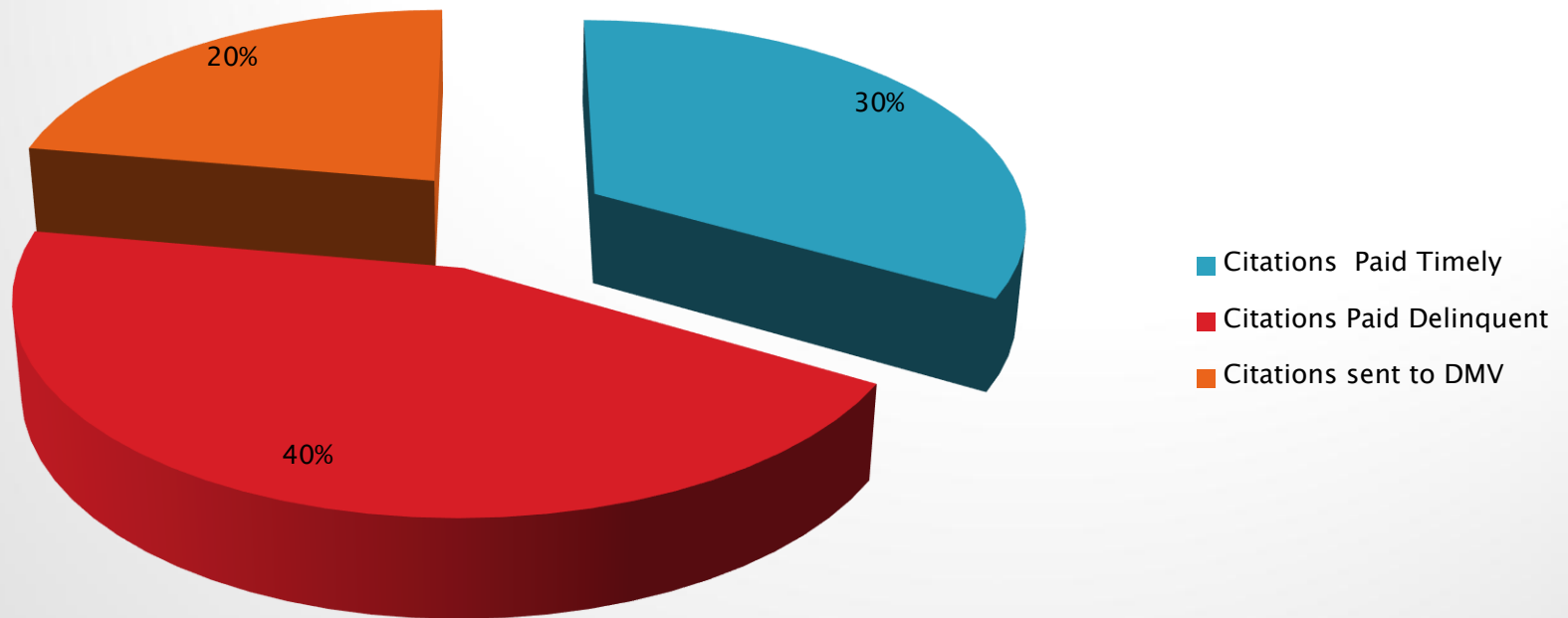
- ▶ Parking enforcement officer to maintain visual sight of the sweeper during the operations.
- ▶ The Parking Enforcement officer issues citations after the sweeper has gone around a vehicle.
- ▶ Residents will be permitted to move their vehicle prior to arrival of the sweeper.
- ▶ Violation occurs when sweeper goes around.

Fines



- ▶ Municipal Code Section 10.28.040 “Parking and Interfering with Construction or Cleaning of Street” currently exists.
- ▶ Council Resolution of August 23, 2011 established fine amount of \$35.00 with a \$50.00 Delinquent Fine.

Expected Citation Outcomes



SCHEDULE FOR IMPLEMENTATION



- ▶ Approval by Council – May 2018.
- ▶ Release of Sign Installation Bid – May 2018
- ▶ Bid Review and Award – June 2018
- ▶ Sign installation commences – August 2018
- ▶ Sign installation completed – November 2018
- ▶ Education and Outreach Starts –September 2018
- ▶ 60-day Enforcement Education – January 2019
- ▶ Full enforcement – March 2019.