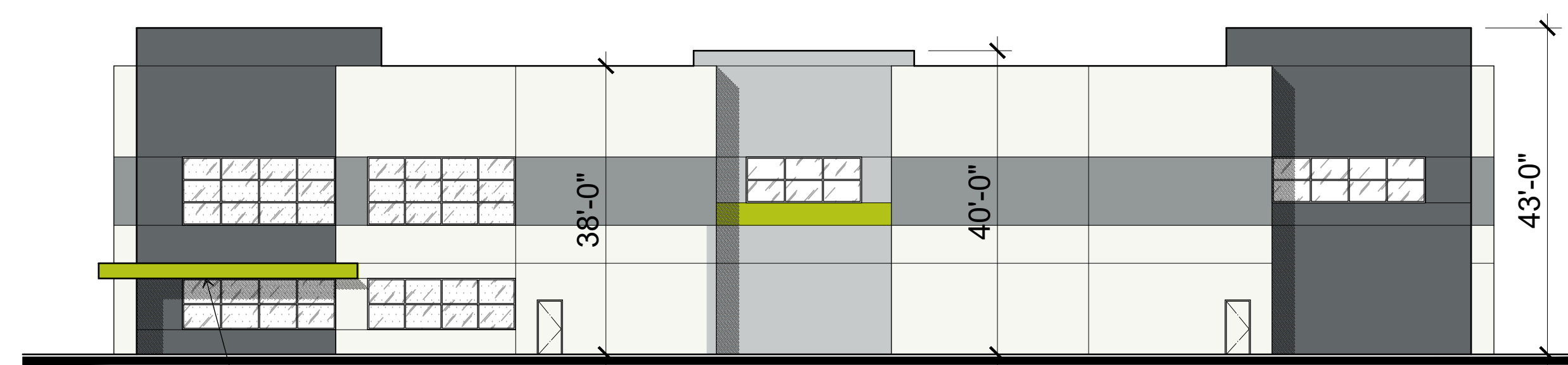


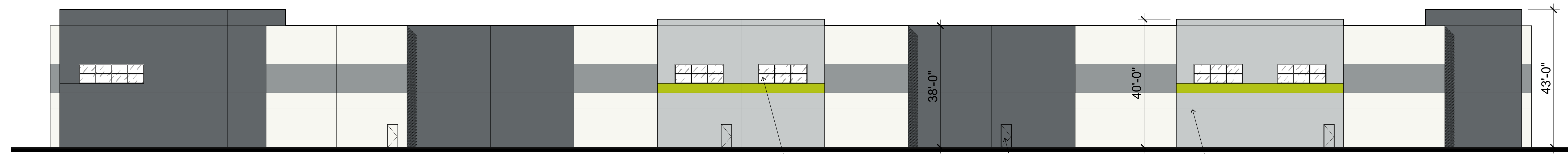
WEST ELEVATION



EAST ELEVATION

	TILT-UP CONCRETE WALL PANEL WALL PANEL FIELD COLOR SHERWIN WILLIAMS - #7757 - HIGH REFLECTIVE WHITE
	TILT-UP CONCRETE WALL PANEL WALL PANEL FIELD COLOR SHERWIN WILLIAMS - #7071 - GRAY SCREEN
	TILT-UP CONCRETE WALL PANEL WALL PANEL ACCENT COLOR SHERWIN WILLIAMS - #9162 - AFRICAN GRAY
	TILT-UP CONCRETE WALL PANEL WALL PANEL ACCENT COLOR SHERWIN WILLIAMS - #7075 - WEB GRAY
	TILT-UP CONCRETE WALL PANEL WALL PANEL ACCENT COLOR SHERWIN WILLIAMS - #6920 - CENTER STAGE
	1" INSULATED DUAL PANE MEDIUM PERFORMANCE PPG VISTACOL PACIFICA GLAZING CLEAR ANODIZED ALUMINUM MULLIONS
	1/4" MEDIUM PERFORMANCE PPG VISTACOL PACIFICA GLAZING CLEAR ANODIZED ALUMINUM MULLIONS

LEGEND

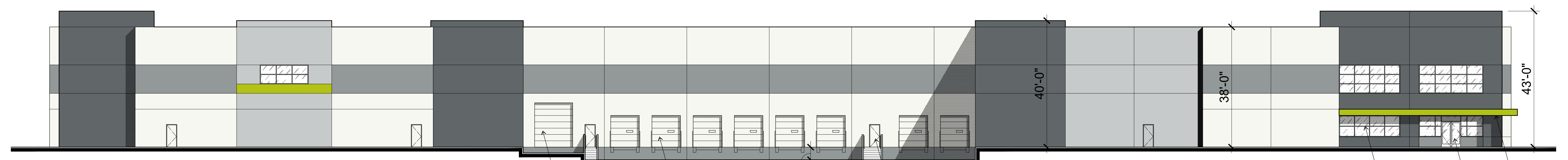


NORTH ELEVATION

CLERESTORY
GLAZING, typical

MAN DOOR, typical

PANEL REVEAL, typical



SOUTH ELEVATION

12'-0" x 14'-0" GRADE
LEVEL ROLL-UP
DOOR

8'-0" x 10'-0" DOCK
HIGH DOOR WITH
VIEW WINDOW,
typical

4'-0"

MAN DOOR WITH
CONCRETE STAIR,
typical

CLEAR ANODIZED
STOREFRONT,
typical

ENTRY

STEEL CANOPY



SOUTH ELEVATION WITH CONCRETE SCREEN WALL

CONCRETE SCREEN
WALL, typical

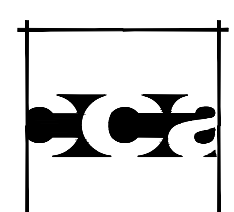
20' X 20' PILASTER,
typical

Alder Avenue and Miro Way
Rialto, CA

PRELIMINARY ELEVATIONS

Scheme 7
30 October 2018

0' 8' 16' 32'
SCALE: 1/16" = 1'-0"



Carlile Coatsworth Architects, Inc.
2450 Campus Dr. - Second Floor - Irvine, CA 92612 - Phone: 949.833.1030 - Fax: 949.833.1140

A-4

