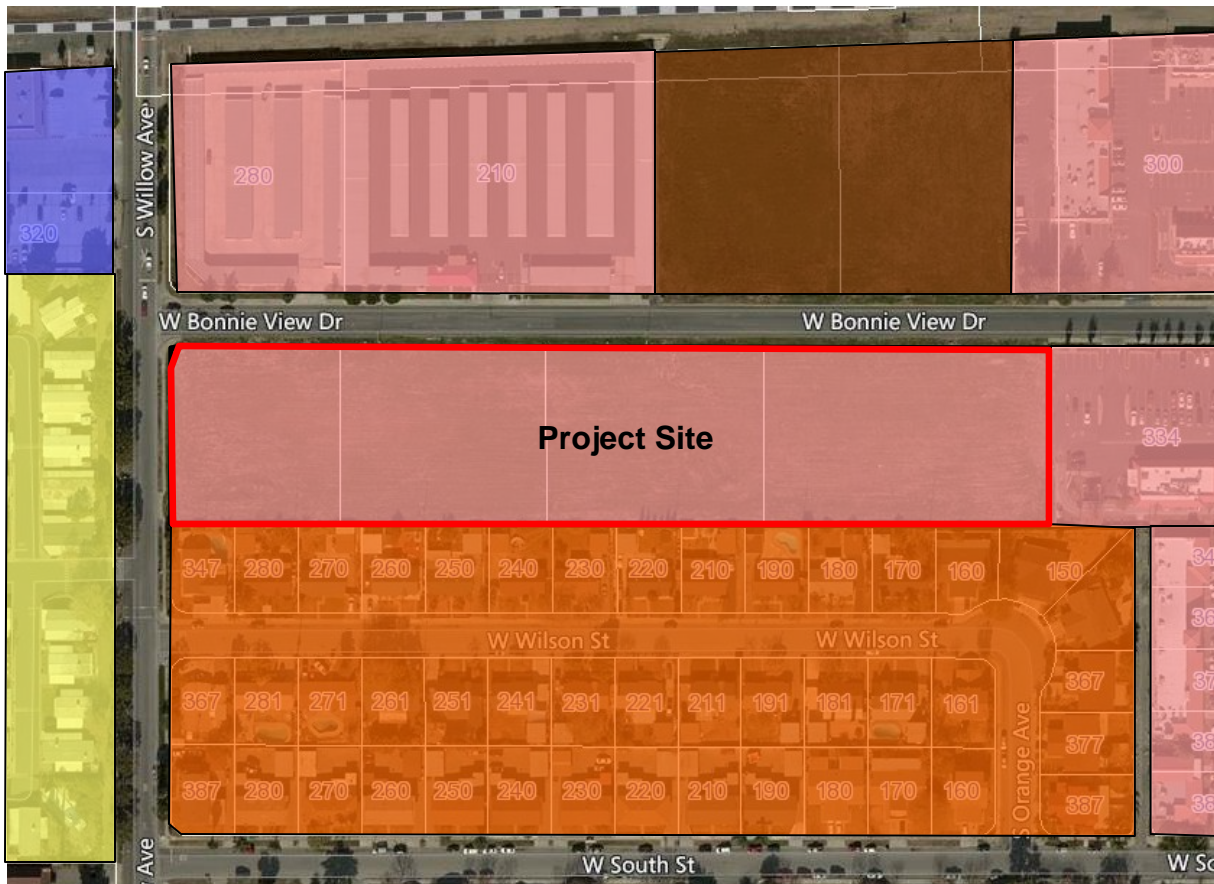
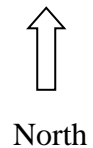


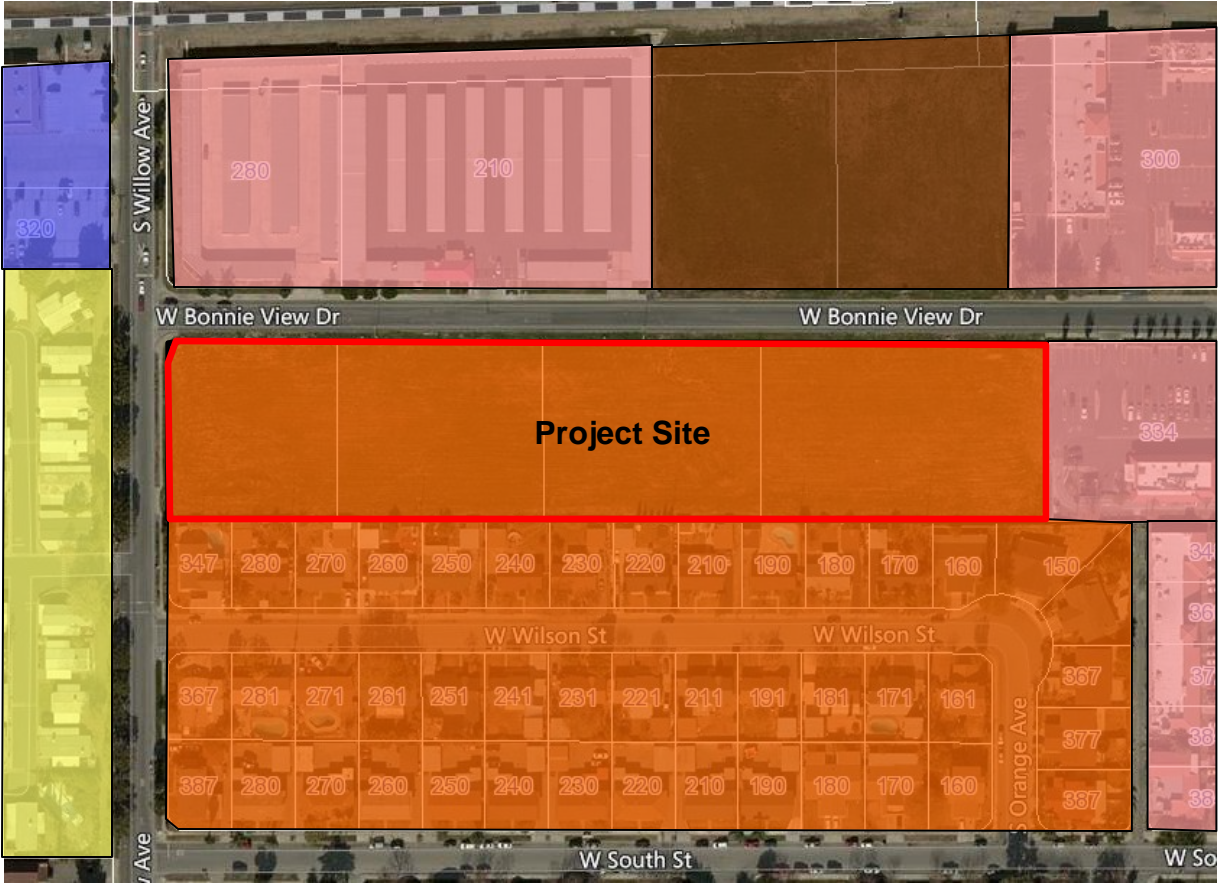
# Existing Zoning



- Support Commercial (S-C)
- Mobile Home Development (MHD)
- Multi-Family Residential (MFR)
- Increased Density Residential (R-X)
- Light Industrial (M-1)



# Proposed Zoning



- Support Commercial (S-C)
- Mobile Home Development (MHD)
- Multi-Family Residential (MFR)
- Increased Density Residential (R-X)
- Light Industrial (M-1)

