

# RIALTO SAFE ROUTES TO SCHOOL

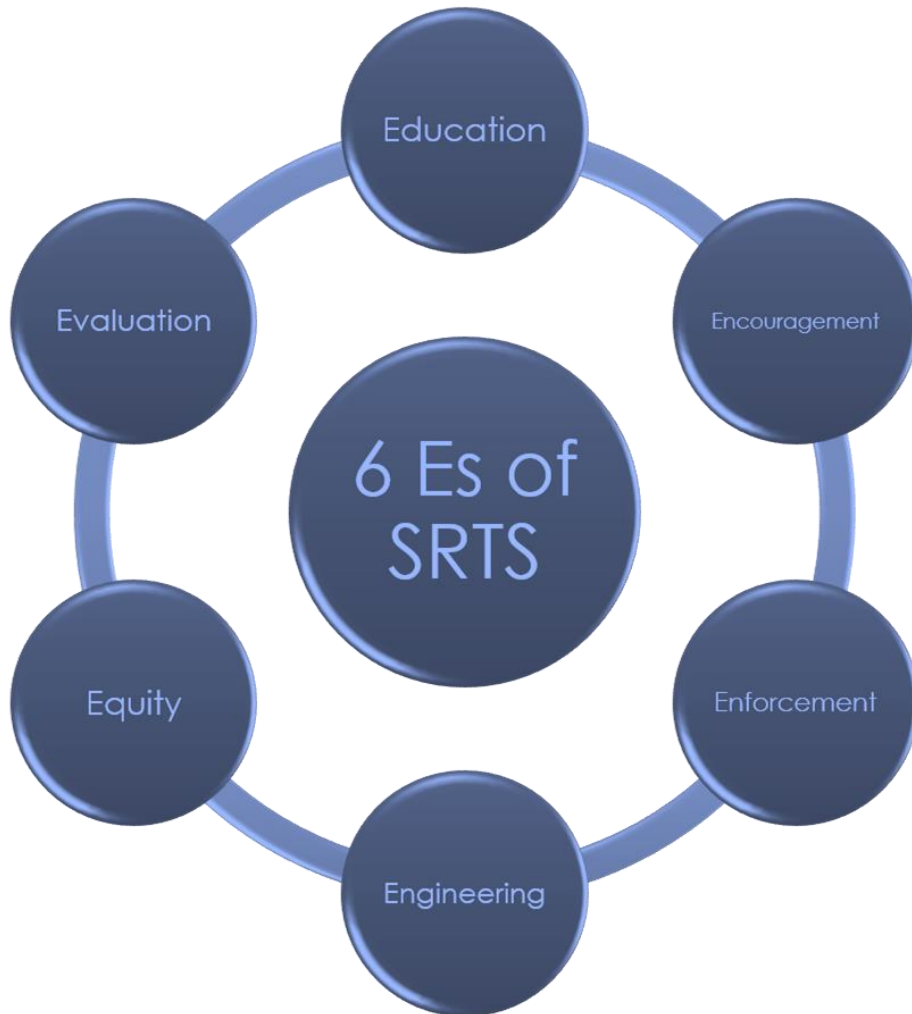
May 14, 2019



*Promoting walking and biking as fun and easy ways to get to and from school.*

[yourrialto.com/srts/](http://yourrialto.com/srts/)

# BACKGROUND



- City of Rialto awarded a Caltrans Active Transportation Program grant in 2015 for SRTS Programs.
- Objective was to develop a plan that incorporates the 6 E's of SRTS



# EDUCATING RIALTO STUDENTS ABOUT SAFETY



- Conducted Rodeos, Assemblies, and Workshops at all Schools
- Led Walking School Bus Day
- Curated a SRTS Video Competition
- Facilitated Community Rodeos



# ENCOURAGING LASTING PARTNERSHIPS



- Facilitated 28 stakeholder meetings with school district, public works, police department, San Bernardino County Public Health, CSUSB, and others
- Continuing work with the Rialto Safety Assessment Team



# ENFORCEMENT THAT SUPPORTS SAFETY



- Established Priority Crossing Guard Locations
- Provided Training Recommendations



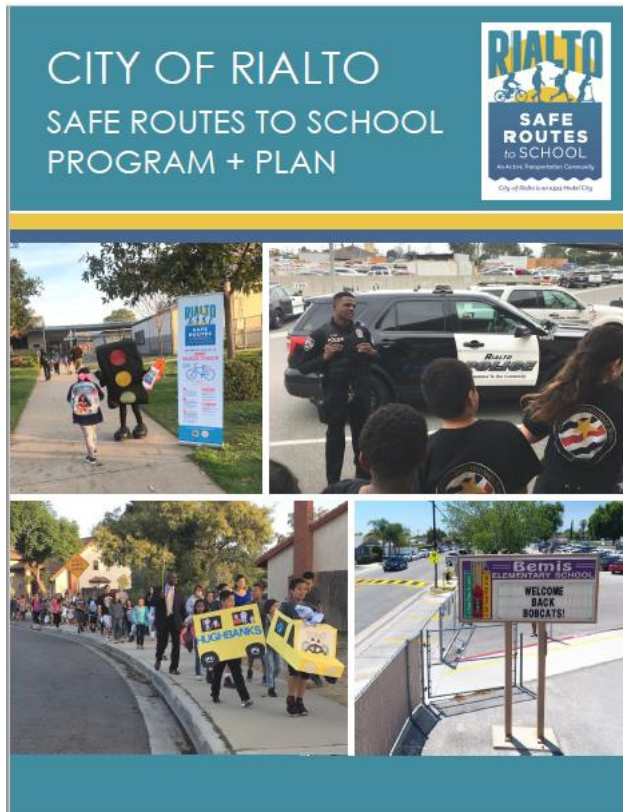
# DEMONSTRATING WHAT'S POSSIBLE



- Developed Potential Infrastructure Improvements Prioritization
- Created Grant-Ready Recommendations



# SRTS PROGRAM + PLAN



- Comprehensive report on all program activities
- Infrastructure, policy, and programmatic recommendations

[yourrialto.com/srts/](http://yourrialto.com/srts/)



# WHAT YOU WILL FIND INSIDE...

sustaining active transportation strategies, including the SRTS Program, Bikeshare, and bike lane and trails improvements. The City is also preparing a climate adaptation plan to respond to climate change challenges, as well as an Active Transportation Plan and Bike Share Feasibility Study.

In addition, the City's Healthy Rialto initiative engages with Rialto residents through community events, farmers' markets, classes at the community gym, First 5 programs, and other activities with a mission to 'promote community wellness and wholeness through education, resources, and activities.

As of 2018, Rialto had a California Health Places Index (HPI) score of 22.4, as shown in Figure 2.1. What this means is that Rialto has less healthy community conditions than 77.6% of other California cities. The HPI score includes indicators such as active commuting and air pollution.

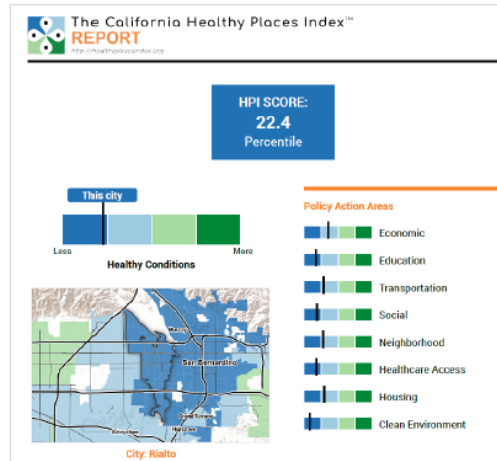


Figure 2.1 California Healthy Places Index combines 25 community characteristics into a single HPI score, which correlate to life expectancy at birth.

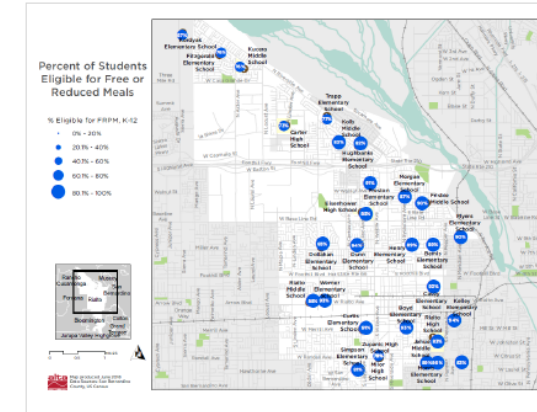


Figure 2.2 Percent of Rialto Unified School Districts Students Eligible for Free or Reduced Priced Meals

The Rialto Unified School District has more than 26,000 students that attend 28 schools. The latest 2012 American Community Survey shows that 67% of the population in Rialto is of Hispanic origin, 16% are African American; 12% white and 5% other. The City's school age children make up 23% of the City's population and 18 out of the 29 schools have 75% or greater/more of the student population who receive free or reduced priced meals, as seen in Figure 2.2.

Rialto is among the top 10% in having the highest pollution according to CalEnviroScreen rankings with a score of 45.37. In addition, of the six counties that make up the Southern California Association of Governments (SCAG), the County of San Bernardino is ranked the smoggiest according to SCAG.



# WHAT YOU WILL FIND INSIDE...

## School Pedestrian and Bike Rodeos

In-school, interactive hands-on pedestrian and bicycle safety rodeos and helmet fittings were conducted at RUSD schools throughout the SRTS Program. These rodeos allowed students to experience traffic situations as pedestrians and bicyclists in a traffic simulation course.

Instructors tailored each rodeo to the appropriate age, grade, and skill-level of student participants. Lessons and traffic situations progressively became more challenge for upper grades.

The purpose of the rodeos was to provide students with the opportunity to learn and practice good pedestrian and bicyclist skills in a safe and fun environment. In total 45 rodeos were conducted, reaching nearly half of RUSD 25,000 students.



## Community Pedestrian and Bike Rodeos

Community pedestrian and bike rodeos are similar to school pedestrian and bicycle safety rodeos, in that they provide participants with an interactive hands-on experience in traffic situations as pedestrians and bicyclists in a traffic simulation course. However, the community rodeos conducted as part of the SRTS Program were open into the entire Rialto community and often piggy-backed on existing community events.

Community rodeo instructors tailored the community rodeo to be engaging for both children and adults. The purpose of the rodeos was to provide community members with the opportunity to learn and practice good pedestrian and bicyclist skills in a safe and fun environment. Ten rodeos were conducted over the course of the program, reaching hundreds of students and their families.

Throughout the SRTS Program, Rialto's City Clerk's office served as a strong advocate and partner in promoting each event.



# WHAT YOU WILL FIND INSIDE...



For each RUSD school:

- Background
- Traffic Violations
- Enforcement Recommendations
- Engineering Recommendations
- Non-infrastructure Recommendations
- Improvements Map
- Suggest Route Map



# WHAT YOU WILL FIND INSIDE...



## **ENVIRONMENTAL PROTECTION AGENCY BROWNFIELDS PROGRAM**

Assessment grants provide funding for a grant recipient to inventory, characterize, assess, and conduct planning and community involvement related to brownfields sites. Revolving Loan Fund (RLF) grants provide funding for a grant recipient to capitalize a revolving loan fund and to provide subgrants to carry out cleanup activities at brownfield sites.

More information: [www.epa.gov/brownfields/types-brownfields-grant-funding](http://www.epa.gov/brownfields/types-brownfields-grant-funding)

## **ENVIRONMENTAL PROTECTION AGENCY PARTNERSHIP FOR SUSTAINABLE COMMUNITIES**

Founded in 2009, the Partnership for Sustainable Communities is a joint project of the Environmental Protection Agency (EPA), the U.S. Department of Housing and Urban Development (HUD), and the U.S. Department of Transportation (USDOT). The partnership aims to "improve access to affordable housing, provide more transportation options, and lower transportation costs while protecting the environment in communities nationwide." The Partnership is based on five Livability Principles, one of which is to provide more transportation choices. The Partnership is not a formal agency with a regular annual grant program. Nevertheless, it is an important effort that has already led to some new grant opportunities (including the TIGER grants).

More information: [www.epa.gov/smartgrowth/hud-dot-epa-partnershipsustainable-communities](http://www.epa.gov/smartgrowth/hud-dot-epa-partnershipsustainable-communities)

## **ENVIRONMENTAL PROTECTION AGENCY SMART GROWTH PROGRAM**

EPA's Smart Growth Program helps communities improve local development practices and get the type of development residents desire. The Smart Growth Program works with local, state, and national experts to discover and encourage development strategies that protect human health and the environment, create economic opportunities, and provide attractive and affordable neighborhoods for people of all income levels. The Smart Growth Program is housed in EPA's Office of Sustainable Communities, which also coordinates EPA's Green Building Work.

More information: [www.epa.gov/smartgrowth/epa-smart-growth-grants-and-other-funding](http://www.epa.gov/smartgrowth/epa-smart-growth-grants-and-other-funding)



## **FEDERAL HIGHWAY ADMINISTRATION ACCELERATED INNOVATION DEPLOYMENT DEMONSTRATION**

The AID Demonstration program provides funding as an incentive to accelerate the use of innovation in highway transportation projects. The Federal Highway Administration (FHWA) expects approximately \$10 million to be made available for AID Demonstration grants in each of Fiscal Years 2016 through 2020 from amounts authorized within the Technology and Innovation Deployment Program (TIDP) under the Fixing America's Surface Transportation (FAST) Act. The grants are administered through the FHWA Center for Accelerating Innovation and involve any phase of a highway transportation project. This grant can be used for road rebalancing improvements.

More information: [www.fhwa.dot.gov/innovation/grants/aid4\\_aiddemo\\_factsheet.pdf](http://www.fhwa.dot.gov/innovation/grants/aid4_aiddemo_factsheet.pdf)

## **FEDERAL HIGHWAY ADMINISTRATION FIXING AMERICA'S SURFACE TRANSPORTATION ACT (FAST ACT)**

The FAST Act, which replaced Moving Ahead for Progress in the 21st Century Act (MAP-21) in 2015, provides long-term funding certainty for surface transportation projects, meaning States and local governments can move forward with critical transportation projects with the confidence that they will have a Federal partner over the long term (at least five years). The law makes changes and reforms to many Federal transportation programs, including streamlining the approval processes for new transportation projects and providing new safety tools. It also allows local entities that are direct recipients of Federal dollars to use a design publication that is different than one used by their State DOT.

More information: [www.transportation.gov/fastact](http://www.transportation.gov/fastact)



## **FEDERAL HIGHWAY ADMINISTRATION CONGESTION MITIGATION AND AIR QUALITY IMPROVEMENT PROGRAM**

Funds may be used for a transportation project or program that is likely to contribute to the attainment or maintenance of a national ambient air quality standard, with a high level of effectiveness in reducing air pollution, and that is included in the metropolitan planning organization's (MPO's) current transportation plan and transportation improvement program (TIP) or the current state transportation improvement program (STIP) in areas without an MPO.

More information: [www.fhwa.dot.gov/fastact/factsheets/cmaqis.cfm](http://www.fhwa.dot.gov/fastact/factsheets/cmaqis.cfm)

# LEVERAGED FUNDS FOR NEW PROJECTS

1. Terra Vista Drive Neighborhood SRTS Infrastructure Implementation
2. Safe Routes for Active Play, Work, and Live Rialto!



# QUESTIONS

