

Billboard Relocation Agreement and Property Leases for Digital Displays (June 11, 2019)



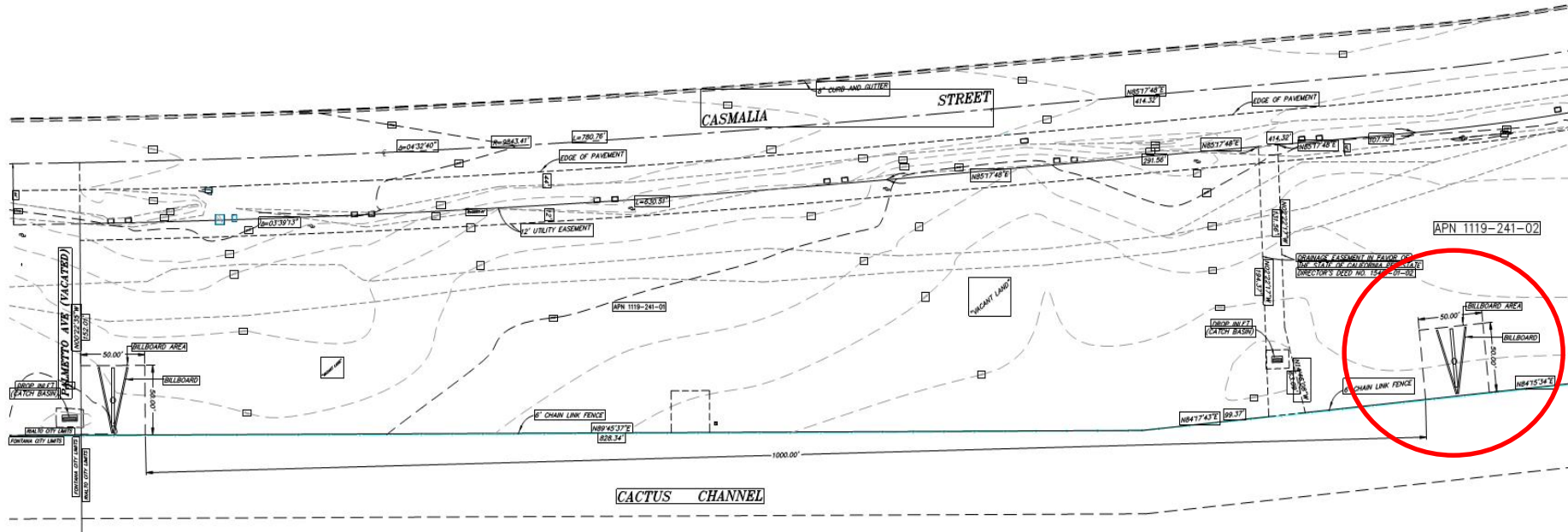
APN: 0128-081-47

**VICINITY MAP**

A horizontal scale bar representing 100 feet. It is divided into five equal segments, each labeled '20' at the top. The segments are filled with alternating black and white squares. Below the bar, a box contains the text '(IN FEET)' and another box contains the text '1 inch = 20 ft'.

Call: TOLL FREE
811
(TWO WHOLE DAYS TO LINK YOU TO)

**CITY OF RIALTO
LAMAR BILLBOARD
APN: 1119-241-01
2645 WEST CASMALIA STREET (WEST)
2605 WEST CASMALIA STREET (EAST)**



BILLBOARD ELEVATIONS



SITE INFORMATION

PROJECT: LAMAR BILLBOARD
CLIENT: CITY OF RIALTO
DATE: 10/1/2011
DRAWN BY: [Signature]
CHECKED BY: [Signature]

LEGEND

EX-01	EXISTING SPOT ELEVATION	AP	ANGLE POINT	GR-01	GROUND SHOT
EX-02	EX. CURB & GUTTER	CPB	BEGINNING OF CURVE	GR-02	IRIGATION CONTROL PULL BOX
EX-03	EX. PARKWAY DRIVE	CRN	CURVE	GR-03	IRIGATION CONTROL VALVE
EX-04	EX. BLOCK WALL	CR-01	CRACK OF WALL	GR-04	LOW STANDARD
EX-05	EX. STORM DRAIN LINE	CR-02	CRACK OF WALL	GR-05	LOW CURB CONC. RIBBON
EX-06	EX. CONC. PAVEMENT	CR-03	CRACK OF WALL	GR-06	PRECAST
EX-07	EX. STREET LIGHT	CR-04	CRACK OF WALL	GR-07	POINT ON CURVE
EX-08	EX. FIRE HYDRANT	CR-05	CRACK OF WALL	GR-08	POINT ON TANGENT
		CR-06	CRACK OF WALL	GR-09	POST W/POWER OUTLET
		CR-07	CRACK OF WALL	GR-10	RAILROAD
		CR-08	CRACK OF WALL	GR-11	RAILROAD
		CR-09	CRACK OF WALL	GR-12	RAILROAD
		CR-10	CRACK OF WALL	GR-13	RAILROAD
		CR-11	CRACK OF WALL	GR-14	RAILROAD
		CR-12	CRACK OF WALL	GR-15	RAILROAD
		CR-13	CRACK OF WALL	GR-16	RAILROAD
		CR-14	CRACK OF WALL	GR-17	RAILROAD
		CR-15	CRACK OF WALL	GR-18	RAILROAD
		CR-16	CRACK OF WALL	GR-19	RAILROAD
		CR-17	CRACK OF WALL	GR-20	RAILROAD
		CR-18	CRACK OF WALL	GR-21	RAILROAD
		CR-19	CRACK OF WALL	GR-22	RAILROAD
		CR-20	CRACK OF WALL	GR-23	RAILROAD
		CR-21	CRACK OF WALL	GR-24	RAILROAD
		CR-22	CRACK OF WALL	GR-25	RAILROAD
		CR-23	CRACK OF WALL	GR-26	RAILROAD
		CR-24	CRACK OF WALL	GR-27	RAILROAD
		CR-25	CRACK OF WALL	GR-28	RAILROAD
		CR-26	CRACK OF WALL	GR-29	RAILROAD
		CR-27	CRACK OF WALL	GR-30	RAILROAD
		CR-28	CRACK OF WALL	GR-31	RAILROAD
		CR-29	CRACK OF WALL	GR-32	RAILROAD
		CR-30	CRACK OF WALL	GR-33	RAILROAD
		CR-31	CRACK OF WALL	GR-34	RAILROAD
		CR-32	CRACK OF WALL	GR-35	RAILROAD
		CR-33	CRACK OF WALL	GR-36	RAILROAD
		CR-34	CRACK OF WALL	GR-37	RAILROAD
		CR-35	CRACK OF WALL	GR-38	RAILROAD
		CR-36	CRACK OF WALL	GR-39	RAILROAD
		CR-37	CRACK OF WALL	GR-40	RAILROAD
		CR-38	CRACK OF WALL	GR-41	RAILROAD
		CR-39	CRACK OF WALL	GR-42	RAILROAD
		CR-40	CRACK OF WALL	GR-43	RAILROAD
		CR-41	CRACK OF WALL	GR-44	RAILROAD
		CR-42	CRACK OF WALL	GR-45	RAILROAD
		CR-43	CRACK OF WALL	GR-46	RAILROAD
		CR-44	CRACK OF WALL	GR-47	RAILROAD
		CR-45	CRACK OF WALL	GR-48	RAILROAD
		CR-46	CRACK OF WALL	GR-49	RAILROAD
		CR-47	CRACK OF WALL	GR-50	RAILROAD
		CR-48	CRACK OF WALL	GR-51	RAILROAD
		CR-49	CRACK OF WALL	GR-52	RAILROAD
		CR-50	CRACK OF WALL	GR-53	RAILROAD
		CR-51	CRACK OF WALL	GR-54	RAILROAD
		CR-52	CRACK OF WALL	GR-55	RAILROAD
		CR-53	CRACK OF WALL	GR-56	RAILROAD
		CR-54	CRACK OF WALL	GR-57	RAILROAD
		CR-55	CRACK OF WALL	GR-58	RAILROAD
		CR-56	CRACK OF WALL	GR-59	RAILROAD
		CR-57	CRACK OF WALL	GR-60	RAILROAD
		CR-58	CRACK OF WALL	GR-61	RAILROAD
		CR-59	CRACK OF WALL	GR-62	RAILROAD
		CR-60	CRACK OF WALL	GR-63	RAILROAD
		CR-61	CRACK OF WALL	GR-64	RAILROAD
		CR-62	CRACK OF WALL	GR-65	RAILROAD
		CR-63	CRACK OF WALL	GR-66	RAILROAD
		CR-64	CRACK OF WALL	GR-67	RAILROAD
		CR-65	CRACK OF WALL	GR-68	RAILROAD
		CR-66	CRACK OF WALL	GR-69	RAILROAD
		CR-67	CRACK OF WALL	GR-70	RAILROAD
		CR-68	CRACK OF WALL	GR-71	RAILROAD
		CR-69	CRACK OF WALL	GR-72	RAILROAD
		CR-70	CRACK OF WALL	GR-73	RAILROAD
		CR-71	CRACK OF WALL	GR-74	RAILROAD
		CR-72	CRACK OF WALL	GR-75	RAILROAD
		CR-73	CRACK OF WALL	GR-76	RAILROAD
		CR-74	CRACK OF WALL	GR-77	RAILROAD
		CR-75	CRACK OF WALL	GR-78	RAILROAD
		CR-76	CRACK OF WALL	GR-79	RAILROAD
		CR-77	CRACK OF WALL	GR-80	RAILROAD
		CR-78	CRACK OF WALL	GR-81	RAILROAD
		CR-79	CRACK OF WALL	GR-82	RAILROAD
		CR-80	CRACK OF WALL	GR-83	RAILROAD
		CR-81	CRACK OF WALL	GR-84	RAILROAD
		CR-82	CRACK OF WALL	GR-85	RAILROAD
		CR-83	CRACK OF WALL	GR-86	RAILROAD
		CR-84	CRACK OF WALL	GR-87	RAILROAD
		CR-85	CRACK OF WALL	GR-88	RAILROAD
		CR-86	CRACK OF WALL	GR-89	RAILROAD
		CR-87	CRACK OF WALL	GR-90	RAILROAD
		CR-88	CRACK OF WALL	GR-91	RAILROAD
		CR-89	CRACK OF WALL	GR-92	RAILROAD
		CR-90	CRACK OF WALL	GR-93	RAILROAD
		CR-91	CRACK OF WALL	GR-94	RAILROAD
		CR-92	CRACK OF WALL	GR-95	RAILROAD
		CR-93	CRACK OF WALL	GR-96	RAILROAD
		CR-94	CRACK OF WALL	GR-97	RAILROAD
		CR-95	CRACK OF WALL	GR-98	RAILROAD
		CR-96	CRACK OF WALL	GR-99	RAILROAD
		CR-97	CRACK OF WALL	GR-100	RAILROAD

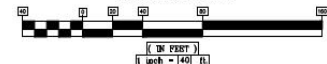
NOTES:

1. PROPERTY LINES AND EXISTING IMPROVEMENTS BASED ON FIELD SURVEY
2. NO EXISTING TREES WERE OBSERVED AT THE SUBJECT PROPERTY
3. BILLBOARD SHOWN AS PROPOSED, NO EXISTING BILLBOARDS ON PROPERTY



VICINITY MAP

GRAPHIC SCALE



Underground Service Alert



Conceptual Designs

6' x 6' x 35' tall, Aluminum pole cover column.

.090" thick aluminum panel construction with internal angle iron framing supports.

Primary 6' x 6' section to have textured finish painted Med Gray.

Vertical front accent to be 8" x 8" square alum, with brushed finish

City of Ontario sign to be 8' square white background with light gray background grid pattern.

Copy to be raised with painted finish.

Top and bottom framing to have brushed aluminum finish.

Pole cover welded to pipe.



Conceptual Designs

5' x 5' x 35' tall, Aluminum pole cover column.

.090" thick aluminum panel construction with internal angle iron framing supports.

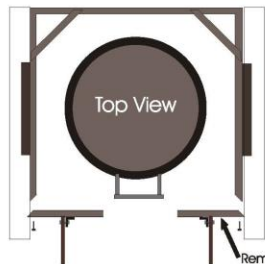
Primary 5' x 5' section to have textured finish painted brown.

Shorter accent blades to be 1/8" thick each x 17" wide x 33' tall. To have textured finish painted Rust Brown.

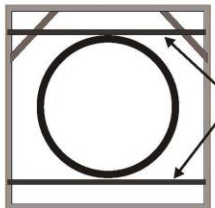
Vertical front accent to be 30" wide x 22' tall x 2" deep, textured & painted Deep Brown.

6" x 6" square horizontal aluminum accents to be painted white.

Pole cover welded to pipe.



Removable end sections on this side only.



WELDED ANGLE IRON SECTIONS BETWEEN PIPE AND POLE COVER FRAMING TO SECURE POLE COVER IN PLACE.
BY INSTALLER

