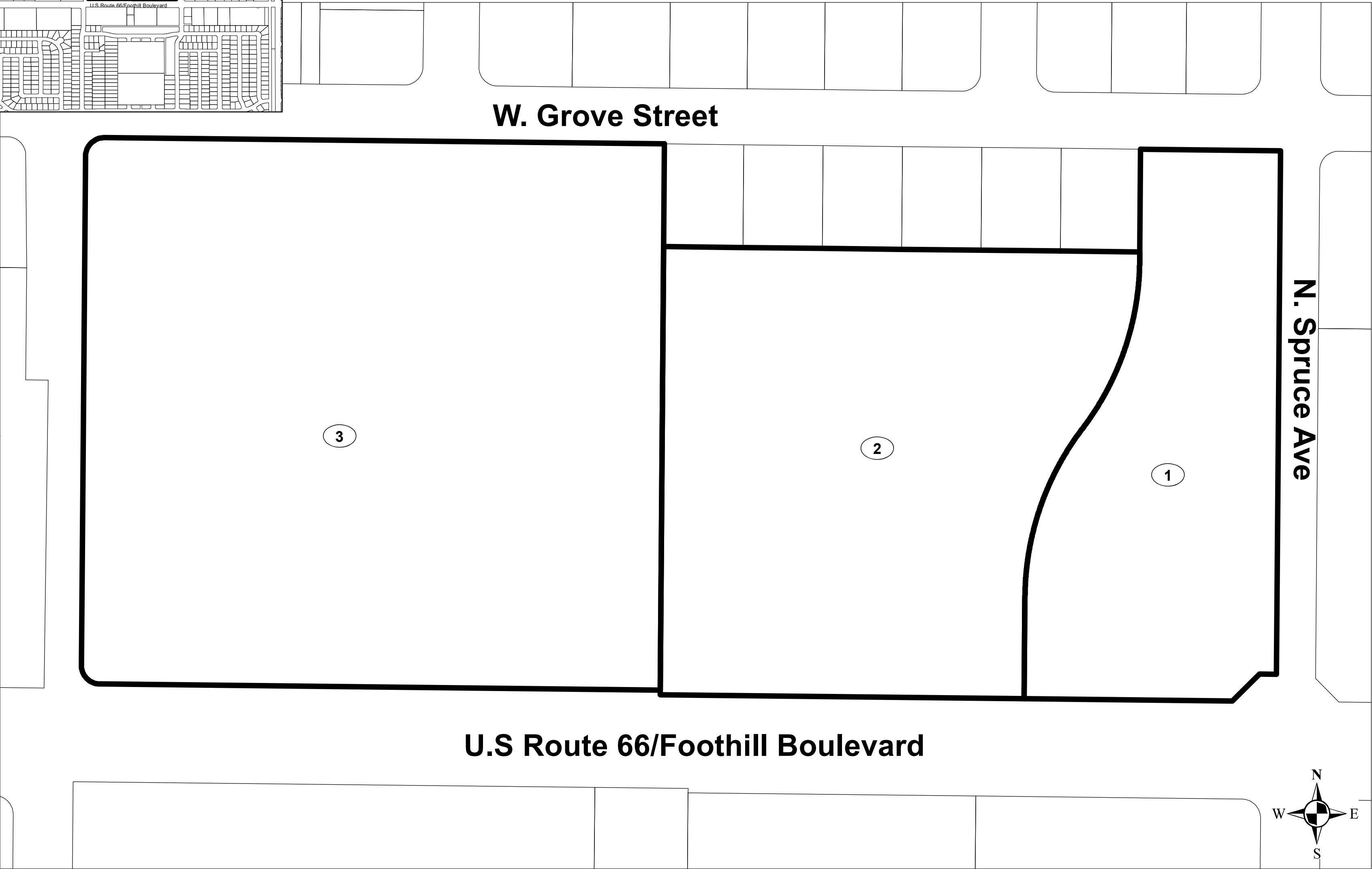
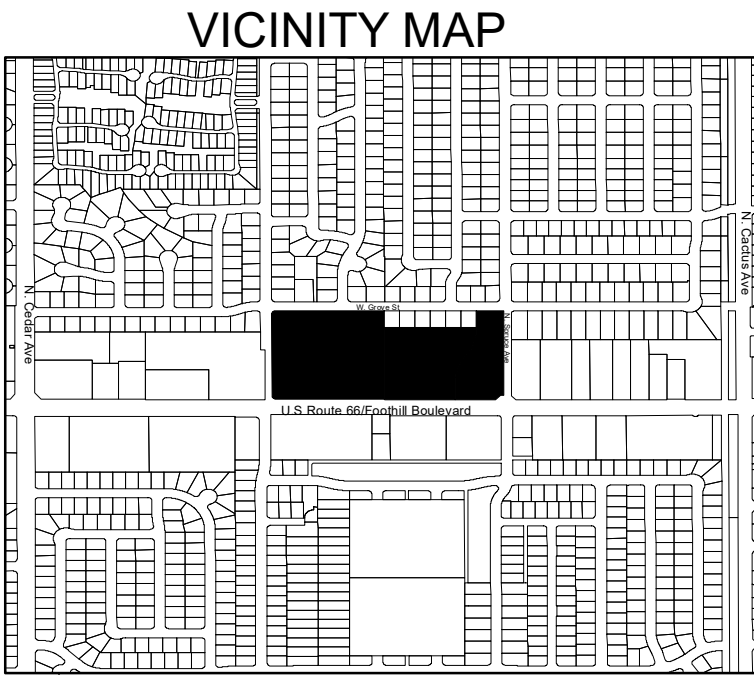


PROPOSED BOUNDARIES OF THE
CITY OF RIALTO
COMMUNITY FACILITIES DISTRICT NO. 2019-2
(FOOTHILL/SPRUCE)

CITY OF RIALTO
COUNTY OF SAN BERNARDINO
STATE OF CALIFORNIA



Filed in the office of the City Clerk of City of Rialto this ____ day of
_____, 20__.

City Clerk
City of Rialto

I hereby certify that the within map showing the proposed boundaries of
Community Facilities District No. 2019-2 (Foothill/Spruce) of the City of
Rialto, County of San Bernardino, State of California, was approved by
the City Council of City of Rialto at a regular meeting thereof, held on this
____ day of _____, 20____, by its Resolution No.
_____.

City Clerk
City of Rialto

Reference is hereby made to the Assessor Maps of the County of San
Bernardino for an exact description of the lines and dimensions of each lot
and parcel.

San Bernardino County Recorder's Certificate


This map has been filed under Document Number _____, this
____ day of _____, 201__, at _____ m, in Book _____
of _____ at page _____, at the request of
_____ in the amount of \$_____.

Bob Dutton
Assessor-Recorder-Clerk
County of San Bernardino

By: _____
Deputy Recorder

Assessor's Parcel Number	Map Reference Number
0128-051-10-000	1
0128-051-27-000	2
0128-051-34-000	3

LEGEND

 Community Facilities District Boundary

