

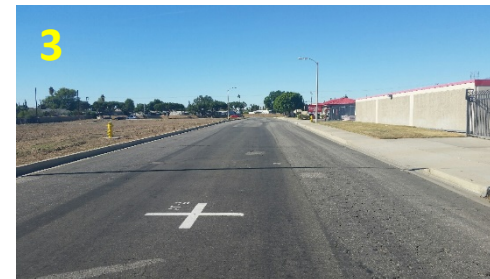
Rialto Metrolink South Transit Oriented Affordable Project Design History

Economic Development Committee

Presenter: Stan Smith

December 11 ,2019





Affordable Project - 2015 78-unit Design

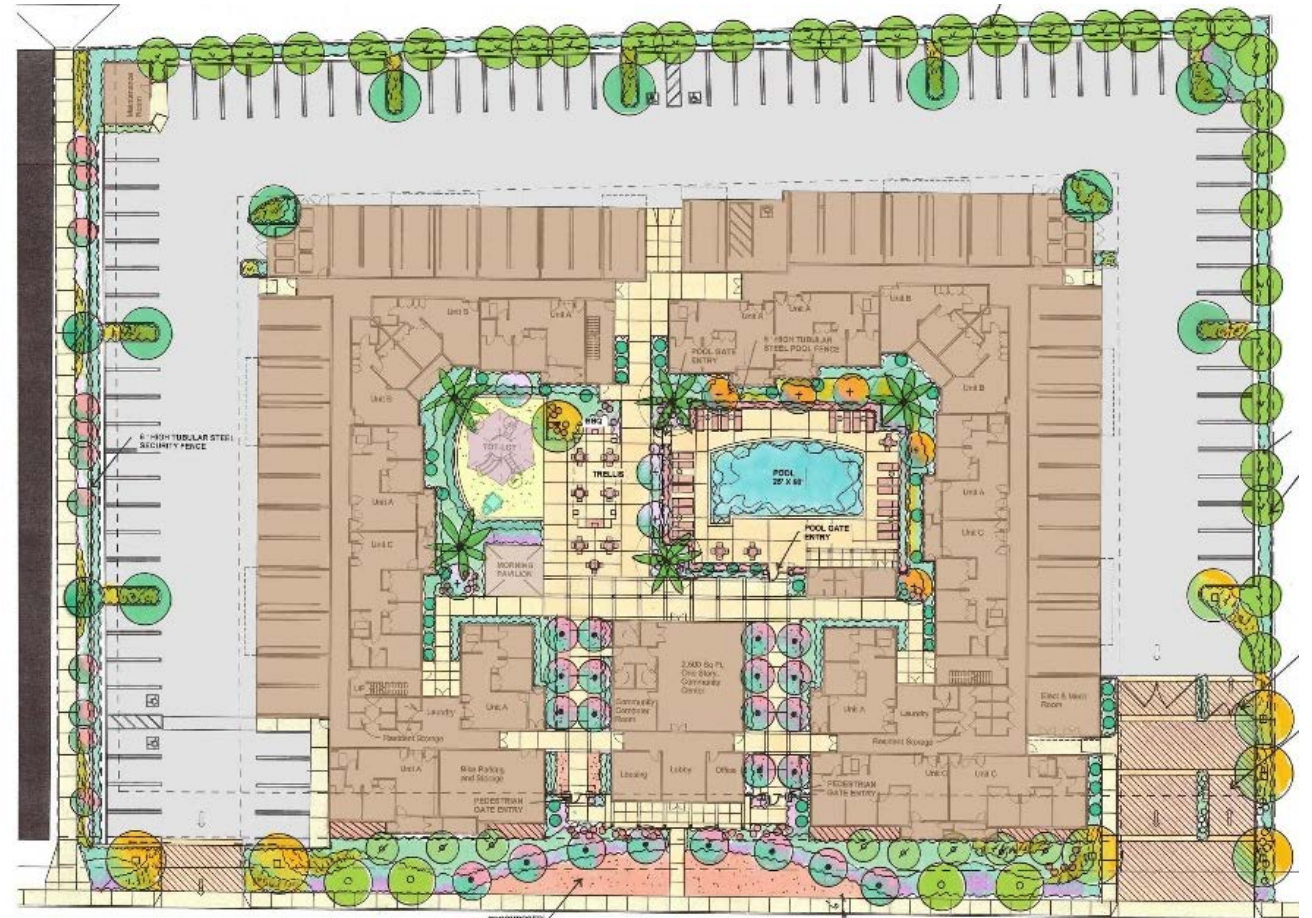
Timeline:

11/23/2015 - City Submission

Unit Type	Count
1 Bedroom	12
2 Bedroom	46
3 Bedroom	20
Total	78

Parking	Count
Standard	81
Covered	40
Total	121

Affordability Mix	Count	Percent
30% AMI	9	11.7%
40% AMI	16	20.8%
50% AMI	31	40.3%
60 % AMI	21	27.3%
Subtotal	77	100%
Manager Unit	1	-
Total	78	-



Affordable Project - 2016

64-unit Design

Timeline:

3/3/2016 - City Submission

5/25/2016 – Planning Commission Approval

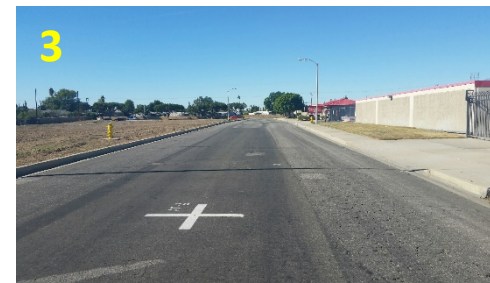
6/29/2016 – Design Review Committee Approval

Unit Type	Count
1 Bedroom	12
2 Bedroom	36
3 Bedroom	16
Total	64

Parking	Count
Standard	48
Covered	67
Total	115

Affordability Mix	Count	Percent
30% AMI	20	31.7%
40% AMI	7	11.1%
50% AMI	19	30.2%
60 % AMI	17	27.0%
Subtotal	63	100%
Manager Unit	1	-
Total	64	-





Affordable Project - 2017

38-unit Design

Timeline:

12/1/2017 - City Submission

Unit Type	Count
1 Bedroom	3
2 Bedroom	25
3 Bedroom	10
Total	38

Parking	Count
Standard	29
Covered	38
Total	67

Affordability Mix	Count	Percent
30% AMI	4	10.8%
40% AMI	4	10.8%
50% AMI	14	37.8%
60 % AMI	15	40.5%
Subtotal	37	100.0%
Manager Unit	1	-
Total	38	-



Affordable Project - 2019

55-unit Design

Timeline:

8/23/2019 - City Submission

Unit Type	Count
1 Bedroom	23
2 Bedroom	15
3 Bedroom	17
Total	55

Parking	Count
Standard	29
Covered	38
Total	67

Affordability Mix	Count	Percent
30% AMI	6	11.1%
40% AMI	10	18.5%
50% AMI	23	42.6%
60 % AMI	15	27.8%
Subtotal	54	100%
Manager Unit	1	-
Total	55	-

