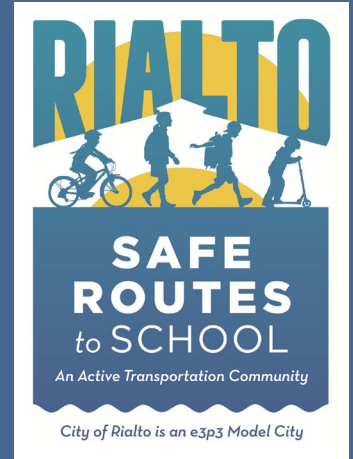


# BOYD ELEMENTARY

## SCHOOL SITE ASSESSMENT





## BOYD ELEMENTARY SCHOOL SITE ASSESSMENT

The Boyd Elementary School Site Assessment contains school information and school existing conditions findings. These were used to inform and prioritize the listed recommendations, all of which are meant to improve safety and walkability to and from school.

### School Details

<b>Address</b>	310 East Merrill St., Rialto CA 92376-6536
<b>Grades</b>	Pre-Kindergarten – Fifth
<b>2018 Total Enrollment</b>	558

### Existing Conditions

#### *School Geographic Position and Drop Off/Pick Up Loop Location*

Boyd Elementary School is located within the south-central region of the City of Rialto, CA along Merrill Avenue, which is approximately 1 mile south of Highway 66 and 1.5 miles north of the 10 Freeway. There is one main pick up and drop off loop location along Sycamore Avenue for Boyd Elementary School.

#### *Sidewalk Coverage and Status*

The existing sidewalk coverage surrounding Boyd Elementary School is not complete, with missing segments in the southwest and northeast. In the northeast region immediately adjacent to the campus, East South Street has missing segments of sidewalk as well as along Allen Street and the perpendicular roadways that branch off (Oakdale Avenue, Marcella Avenue, and Joyce Avenue). Towards the south of campus E Huff Street, E Orchard Street, E Carter Street, and E James Street have no existing sidewalks. Further southwest S Magnolia Avenue, E Voddan Street, and S Date Street all have missing sidewalks. The sidewalks that do exist are in good condition with no observed issue. Some segments are in newer condition than others but the overall quality was observed to be high.

### *Curb Ramp Coverage – ADA curb ramps*

Boyd Elementary School is surrounded by many corridors with incomplete curb ramp coverage. Along Merrill Avenue, towards the east, there are many curb ramps missing. Acacia Avenue and Encina Avenue both have almost nonexistent curb ramp coverage within the school attendance area. Running east-west - E South Street, E Wilson Street and Allen Street have missing curb ramps at almost all intersections. Many, but not all, missing curb ramps are often found where there are missing sidewalks in the surrounding school area. Overall the existing condition of the curb ramp coverage is not complete with numerous missing ramps located at the intersections that surround Boyd Elementary School.

### *Crosswalks (School Crosswalks, Regular Crosswalks, Mid-Block Crossings)*

There are four crosswalks in total located within the school area of Boyd Elementary School along Merrill Avenue. Three of the four crosswalks are yellow-painted school crosswalks. The regular white painted crosswalk is located at S Riverside Avenue and Merrill Avenue. The three school crosswalks are located along Merrill Avenue at S Sycamore Avenue, S Acacia Avenue, and S Eucalyptus Avenue. The school crosswalks and regular crosswalk are in good condition with little fading, cracks, or tire marks present; generally, the four crosswalks are visible.

### *School Signage and Flashing Beacon Location*

The existing school sign coverage surrounding Boyd Elementary School is not as comprehensive as observed surrounding other elementary, middle and high schools within Rialto. There are a total of four SR4-1 (CA) 25 mile per hour (mph) signs positioned adjacent to the campus along both Merrill Avenue (three signs) and S Sycamore Avenue (one sign). There are no flashing beacon signs present in the surrounding school area. The signs that are present are in good condition with the eastern-most SR4-1 (CA) sign showing some fading.

### *On Street Parking Restrictions*

Boyd Elementary School has a few on street parking restrictions surrounding its campus. Merrill Avenue has sporadic red curbs that permanently restrict parking, with most red curb segments located on either side of driveways that allow for entering and exiting traffic on Merrill Avenue. Other than the observed red curbs, there are no further restrictions for motor vehicles.

### *Bicycle and Pedestrian Detection*

There are no existing bicycle detection systems in place around Boyd Elementary School, nor are there any bicycle lanes/routes present. There are three intersections that are signalized within the school zone, all of which have

existing pedestrian detection (pedestrian push button) systems available. These pedestrian push buttons are located along Merrill Avenue at S Riverside Avenue, S Sycamore Avenue, and S Eucalyptus Avenue. No other detection systems for either pedestrians or bicyclists exist besides the ones listed at the signalized intersections.

#### *Speed Limit, Street Condition, Street Width, and Observed High Speeds*

The posted speed limit around Boyd Elementary School varies by street, however the constant school speed limit it posted at 25 mph per the SR4-1 (CA) speed limit signs. The speed along Merrill Avenue and Sycamore Avenue is 35 mph. Merrill Avenue and S Riverside Avenue are four lane arterial roadways with a measured width of 64 feet, curb to curb. All other roadways are two lanes wide measured between 35 and 40 feet, curb to curb. The overall street condition is good, with some segments that are newer than others. The older segments do have present cracks and general wear and tear. Merrill Avenue, being a major arterial roadway did exhibit higher speeds than the posted speed limits.

#### *Signalized Intersection Location and All Way STOP Controlled Intersections*

Within the Boyd Elementary School zone there are three signalized intersections along Merrill Avenue and one all way STOP controlled intersection also along Merrill Avenue. The STOP controlled intersection is at Merrill Avenue and S Acacia Avenue. The three signalized intersections along Merrill Avenue are located at (S Riverside Avenue, S Sycamore Avenue, and S Eucalyptus Avenue).

#### *School Pavement Markings*

Boyd Elementary School has no present school pavement markings surrounding its campus.

#### *Potential Sight Distance Issues and Overgrown Trees/Shrubbery*

There are two locations with sight distance issues around Boyd Elementary School. There is a slight hill rise that is located at the intersection of Merrill Avenue and S Eucalyptus Avenue which makes it difficult for drivers to see what is on the other side of the crest while traveling east-west. It is a slight hill which, at the posted speed limit, should not create any adverse situations; however, the observed speeds might make users travelling through this intersection uncomfortable. Lastly, along S Joyce Avenue on the eastside sidewalk (south of Merrill Avenue), there were observed overgrown shrubbery that blocked the sidewalk during the site visit on 07/20/2016.

#### *Rail Road Crossing Location*

There are three existing rail crossings within the school area of Boyd Elementary School. The roadways that intersect with the rail crossing are Riverside Avenue,

Sycamore Avenue, and Acacia Avenue. The condition of the crossing is adequate, but lacks certain traffic control devices specifically for pedestrians.

#### *Crossing Guard Location*

There are two directly positioned crossing guards for Boyd Elementary School. The crossing guards are positioned at Merrill Avenue and Sycamore Avenue (signalized intersection) and Merrill Avenue and Acacia Avenue (stop controlled intersection).

Violations within ¼ Mile		Total
22450 (a)	Failure to stop at stop sign limit line, crosswalk, or entrance of intersection	46
21802	Failure to stop at stop sign or yield right-of-way at intersection with stop sign	3
22107	Safe turning/lane change	3
21453 (a)	Failure to stop at red traffic signal	2
21453 (c)	Turning against red arrow signal	2
21461 (a)	Failure to obey MUTCD/regulatory sign/signal	1
21950	Failing to yield right-of-way for pedestrian in crosswalk	0
21954 (a)	Pedestrian failing to yield to traffic (not in crosswalk)	0
21955	Jaywalking between two adjacent signalized intersections	0
22101 (d)	Failure to obey turning movement sign/signal	0
22102	Non-intersection U-turn in business district	0
22349 (a)	Speeding (>65mph on highway)	0
22350	Speeding (> reasonably safe speed)	0

Boyd Elementary Cumulative Violations (08/01/2014-07/31/2017) Data provided by Rialto Police Department

## **Enforcement Recommendations**

- Driver Safety Education – multiple agency campaign citywide.
- School District and School Partnerships – Crossing Guard considerations, pedestrian/bicycle safety assembly, and flyer campaign.
- Speed Monitoring Devices – short-term operations in close proximity to schools.
- Targeted Police Enforcement – strategic RPD school area operations.
- Neighborhood Speed Watch Program – surrounding school neighborhood.
- Diversion Program – citywide pedestrian and bicycle behavior modification initiative with specific school area overlap.

## **Engineering Recommendations**

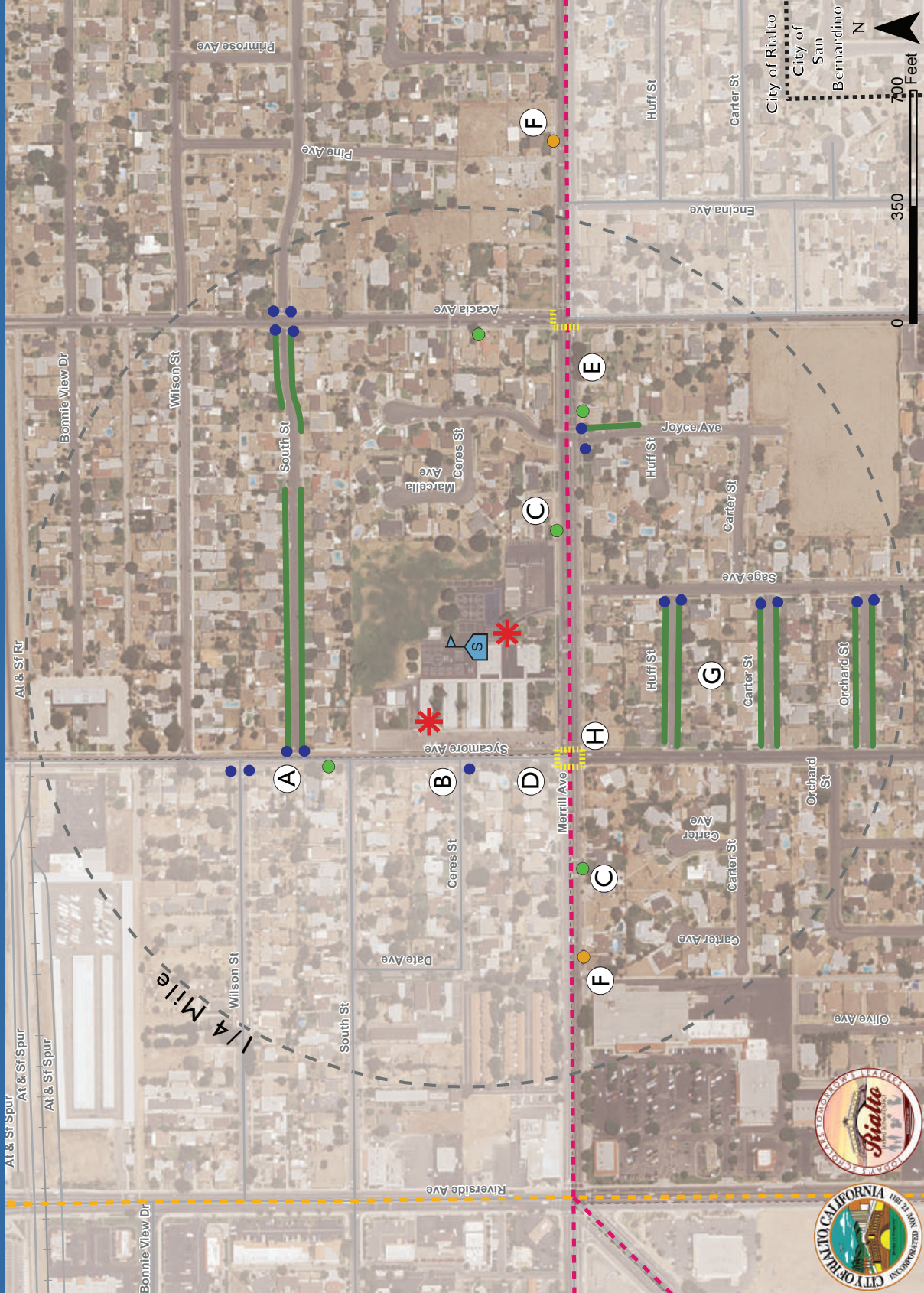
- Traffic Calming Striping: High Visibility Crosswalks
- Pedestrian Crosswalk Control Devices: Flashing Beacon, \*Rapid Flashing Rectangular Beacons (RRFBs), In-Pavement Flashers or Countdown Pedestrian Signal Heads
- Traffic Calming Measure: Raised Crosswalk
- Other engineering and operational improvement items noted in the "Engineering & Operational Improvement" Map, which is provided below.



## Non-Infrastructure Recommended Improvements

<b>Site-specific circulation plan</b>	Ensure pick-up/drop-off gates and loops are open for use. Plan should include vehicular, pedestrian, and cyclist accessibility. Collaboration between the City of Rialto, Rialto Unified School District, and SRTS team members is recommended. If possible, relocate bus loading to Sycamore Ave or existing parking lot. Designate Sycamore Ave parking lot as primary passenger loading zone. Facilitate proper use of campus parking facility.
<b>Park and walk sites</b>	Encourage parents to park in a designated nearby residential street and walk students in. This will help mitigate congestion and pollution within the immediate school area.
<b>Staggered bell schedule</b>	Implement a staggered bell schedule, particularly for school sites within close proximity to each other to alleviate pick-up/drop-off congestion.
<b>RUSD safety officers</b>	Develop a rotational schedule so that all school sites are more regularly monitored during pick-up/drop-off periods.
<b>Pick-up/drop-off supervision</b>	Assign trained school staff and/or volunteers to facilitate pick-up/drop-off supervision through the entire drop-off and pick-up windows. Staff duties shall rotate with proper guidance from head school staff for placement, as well as yearly (or bi-yearly) training.
<b>Bike storage facilities</b>	Enhance campus bicycle/scooter/skateboard storage facilities to encourage use of active transportation. Designate primary bicycle parking location and provide necessary improvements.
<b>Campus activities and clubs</b>	Establish a campus organization, club, or group that encourages walking and rolling to school. An example would be a running or walking club.

# BOYD ELEMENTARY SCHOOL - ENGINEERING & OPERATIONAL IMPROVEMENTS MAP



For Class II Bike Lanes, install R81 (CA) and R7-9 signs along lane. For Class III Bike Routes, install R4-1 signs.



## Draft Engineering & Operational Improvement Callouts

April 28, 2017

- [illegible]