

KEYNOTES

- 1.0 GENERAL
1.1 LINE OF ROOF BEYOND
- 3.0 CONCRETE
3.1 TILT-UP CONCRETE WALL PANEL (PAINTED, ALL EXTERIOR SURFACES)
3.2 PANEL JOINT
3.3 PANEL REVEAL- REVEAL COLOR TO MATCH ADJACENT FIELD COLOR.
3.4 CONCRETE STAIRS W/ HANDRAIL & 42" HIGH GUARDRAIL
3.5 TILT-UP CONCRETE SCREEN WALL PANEL (PAINTED ALL SIDES)
- 5.0 METALS
5.1 NOT USED
5.2 ALUMINUM CANOPY
5.3 STEEL PIPE BOLLARD
- 8.0 OPENINGS
8.1 EXTRUDED ALUMINUM AND GLASS STOREFRONT, DUAL GLAZE
8.2 ALUMINUM AND GLASS ENTRY DOOR - REFER TO DOOR SCHEDULE
8.3 HOLLOW METAL MAIN DOOR, PAINTED
8.4 9'W x 10'H OVERHEAD SECTIONAL DOCK DOOR, PAINTED
8.5 12'W x 14'H OVERHEAD SECTIONAL GRADE DOOR, PAINTED
- 10.0 SPECIALTIES
10.1 STREET ADDRESS - SIZE AS REQUIRED BY GOVERNING AGENCY BUT NOT LESS THAN 12"
10.2 POTENTIAL BUILDING/TENANT SIGNAGE LOCATION (N.I.C.)
- 11.0 EQUIPMENT
11.1 DOCK BUMPERS - COORDINATE W/ MFR & STRUCTURAL DRAWINGS. SIZE AS NEEDED TO PREVENT TOP OF TRAILER FROM STRIKING BUILDING WALL.

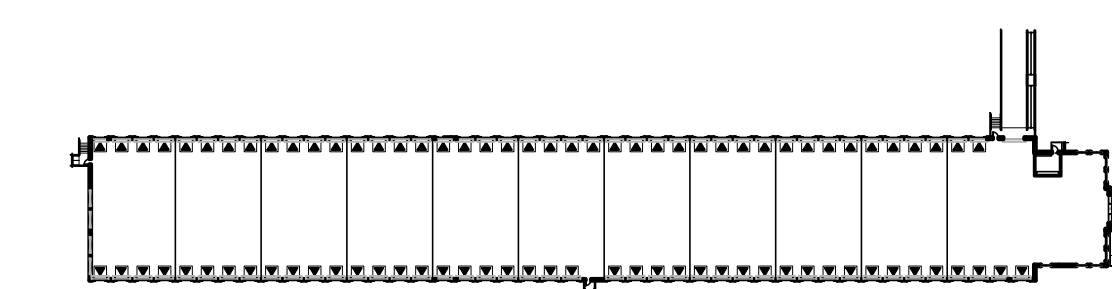
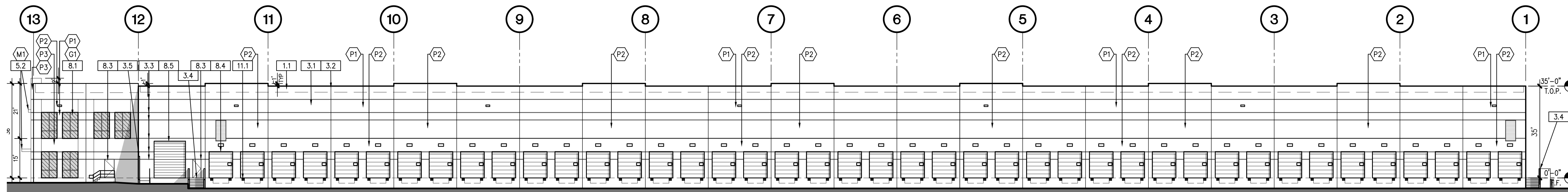
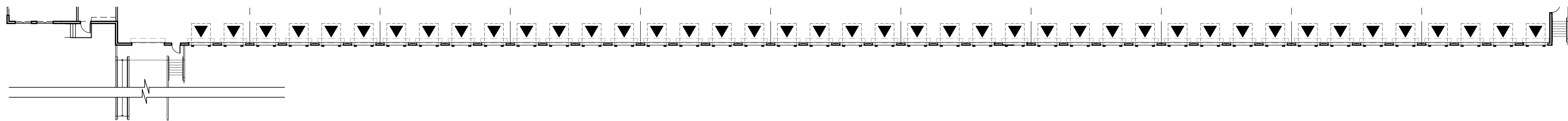
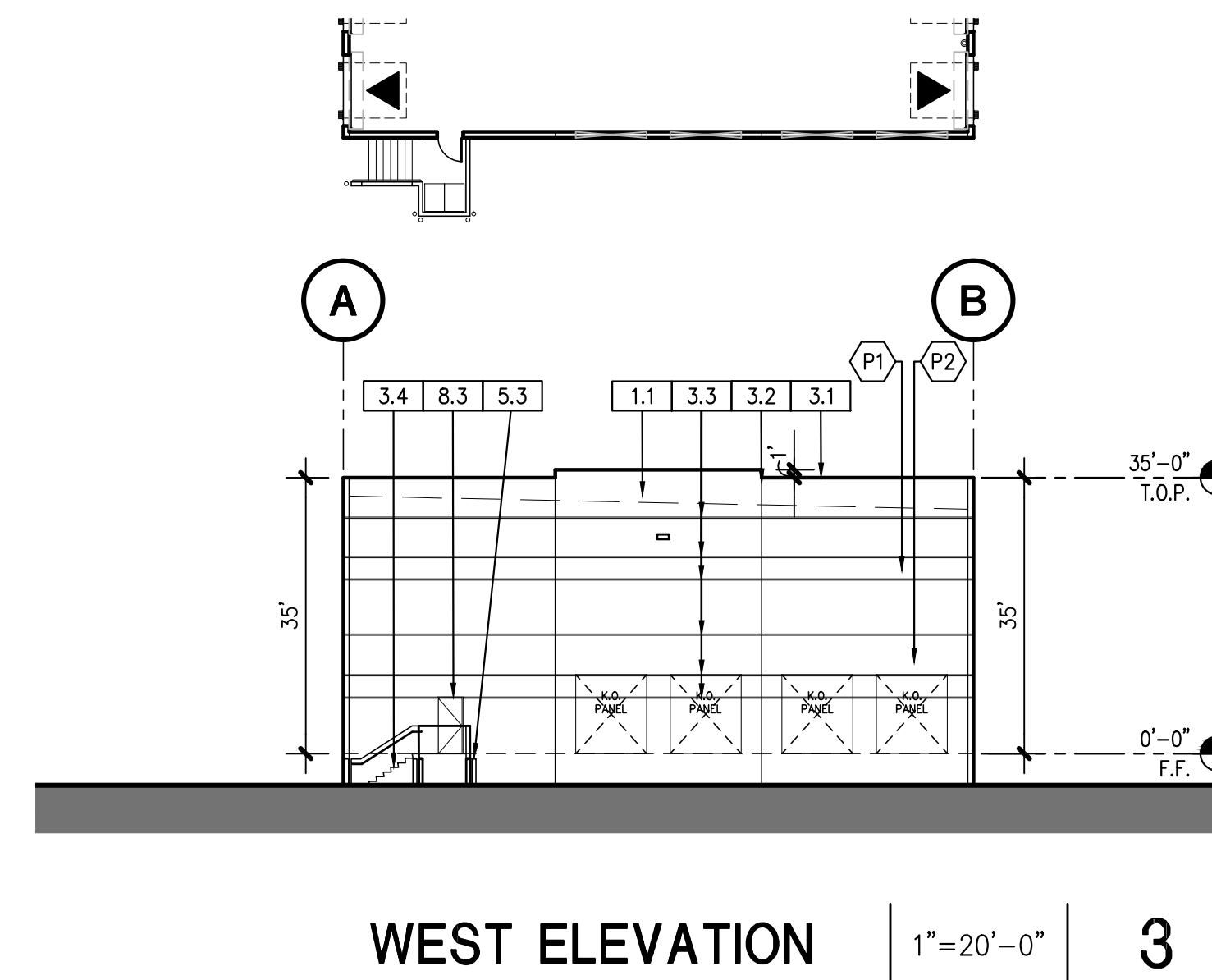
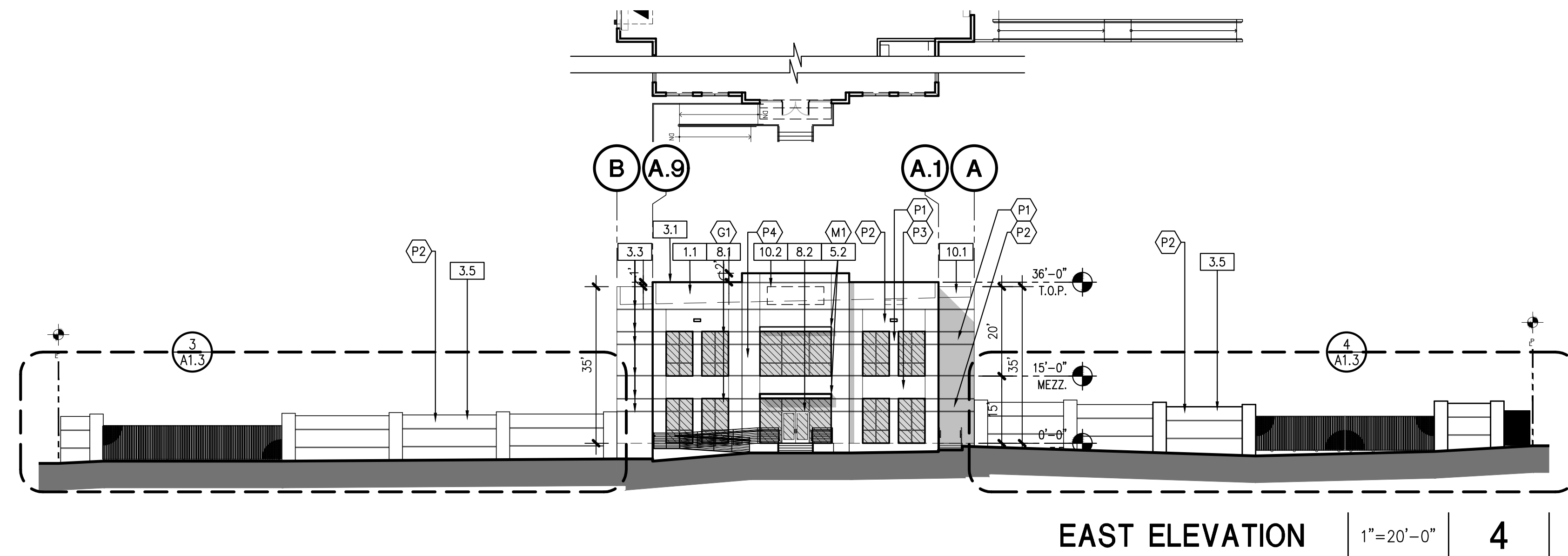
GENERAL NOTES

1. MECHANICAL ROOF EQUIPMENT TO BE SCREENED FROM VIEW.
2. ALL PAINT COLOR CHANGES TO OCCUR AT INSIDE CORNERS AND REVEAL LINES UNLESS NOTED OTHERWISE. REVEAL COLOR TO MATCH THE ADJACENT FIELD COLOR.
3. PROVIDE 8'-0" WIDE COLOR SAMPLE ON BUILDING, FULL HEIGHT FROM BASE TO PARAPET FOR APPROVAL BY ARCHITECT AND OWNER PRIOR TO PAINTING.
4. ALL PAINT, STAIN, SANDBLAST, ETC. FINISHES AND JOINTS/REVEALS SHOWN IN ELEVATION VIEW SHALL RETURN TO THE NEAREST INSIDE CORNER OR INTO WINDOW JAMBS.
5. ALL WALL PAINT FINISHES ARE TO BE FLAT, METAL PAINT TO BE SEMI-GLOSS UNLESS NOTED OTHERWISE.
6. BACK SIDE OF PARAPETS TO HAVE SMOOTH FINISH AND BE PAINTED WITH ELASTOMERIC PAINT.
7. T.O.P. = TOP OF PARAPET ELEVATION
8. F.F. = FINISH FLOOR ELEVATION
9. MEZZ. = MEZZANINE FLOOR ELEVATION
10. STOREFRONT CONSTRUCTION: GLASS, METAL ATTACHMENTS, AND UNTELS SHALL BE DESIGNED TO RESIST 90 MPH EXPOSURE "C" WINDS. CONTRACTOR SHALL SUBMIT SHOP DRAWINGS PRIOR TO INSTALLATION.

COLOR SCHEDULE / MATERIALS

- G1 GLAZING MEDIUM PERFORMANCE
COLOR: BLUE
ALUMINUM
FINISH: CLEAR ANODIZED
- M1 CANOPY ALUMINUM
FINISH: CLEAR ANODIZED
- M2 MULLIONS ALUMINUM
FINISH: CLEAR ANODIZED
- P1 PAINT 1 DUNN EDWARDS "PORPOISE" DE6373 LRV 65 OR SIMILAR
MAIN BUILDING COLOR - WHITE
- P2 PAINT 2 DUNN EDWARDS "CASTLE ROCK" DE6375 LRV 37 OR SIMILAR
OFFICE & BUILDING BASE COLOR - MEDIUM GRAY
- P3 PAINT 3 DUNN EDWARDS "BOAT ANCHOR" DE6377 LRV 14 OR SIMILAR
OFFICE BASE COLOR - DARK GRAY
- P4 PAINT 4 BEHR "EASTERN BLUEBIRD" PMD-54 LRV 23 OR SIMILAR
OFFICE ACCENT COLOR - MEDIUM BLUE

DOORS TO MATCH ADJACENT BUILDING COLOR



NO.	DESCRIPTION	DATE
△	AGENCY SUBMITTAL	7/31/2020
△	AGENCY SUBMITTAL #2	10/1/2020
△	AGENCY SUBMITTAL #3	4/7/2021

ELEVATIONS

ALL DRAWINGS AND WRITTEN MATERIAL APPEARING HEREIN CONSTITUTE THE ORIGINAL AND UNPUBLISHED WORK OF THE ARCHITECT AND THE SAME MAY NOT BE DUPLICATED, USED OR DISCLOSED WITHOUT THE EXPRESS WRITTEN CONSENT OF THE ARCHITECT.
© GAA ARCHITECTS. ALL RIGHTS RESERVED.

JOB NO.	DDP030.01	SHEET NO.
DATE	7/24/20	A4.1
DRAWN	GAA	
FILE NAME	DDP030_A4_1	



EAST ELEVATION | 1"=20'-0" | 4 |



WEST ELEVATION | 1"=20'-0" | 3 |



NORTH ELEVATION | 1"=20'-0" | 2 |



SOUTH ELEVATION | 1"=20'-0" | 1 |

COLOR SCHEDULE / MATERIALS

- G1 GLAZING MEDIUM PERFORMANCE
COLOR: BLUE
M1 CANOPY ALUMINUM
FINISH: CLEAR ANODIZED
M2 MULLIONS ALUMINUM
FINISH: CLEAR ANODIZED
P1 PAINT 1 DUNN EDWARDS "PORPOISE" DE6373 LRV 65 OR SIMILAR
P2 PAINT 2 DUNN EDWARDS "CASTLE ROCK" DE6375 LRV 37 OR SIMILAR
P3 PAINT 3 OFFICE & BUILDING BASE COLOR - MEDIUM GRAY
DUNN EDWARDS "BOAT ANCHOR" DE6377 LRV 14 OR SIMILAR
P4 PAINT 4 OFFICE BASE COLOR - DARK GRAY
BEHR "EASTERN BLUEBIRD" PMD-54 LRV 23 OR SIMILAR
OFFICE ACCENT COLOR - MEDIUM BLUE

DOORS TO MATCH ADJACENT BUILDING COLOR



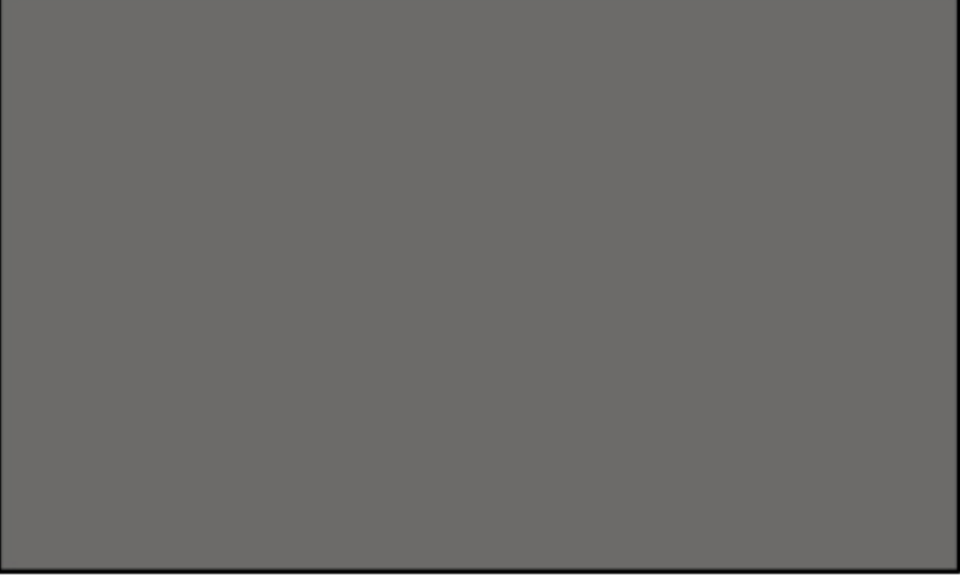
G1 M1 M2 GLAZING, CANOPY, MULLIONS - SEE MATERIALS SCHEDULE



P1 PAINT - SEE MATERIALS SCHEDULE



P2 PAINT - SEE MATERIALS SCHEDULE



P3 PAINT - SEE MATERIALS SCHEDULE



P4 PAINT - SEE MATERIALS SCHEDULE

NO.	DESCRIPTION	DATE
△	AGENCY SUBMITTAL	7/31/2020
△	AGENCY SUBMITTAL #2	10/1/2020
△	AGENCY SUBMITTAL #3	4/7/2021

COLOR ELEVATIONS

ALL DRAWINGS AND WRITTEN MATERIAL APPEARING HEREIN
CONSTITUTE THE ORIGINAL AND UNPUBLISHED WORK OF THE
ARCHITECT AND THE SAME MAY NOT BE DUPLICATED, USED OR
DISCLOSED WITHOUT THE EXPRESS WRITTEN CONSENT OF THE ARCHITECT.
© GAA ARCHITECTS. ALL RIGHTS RESERVED.