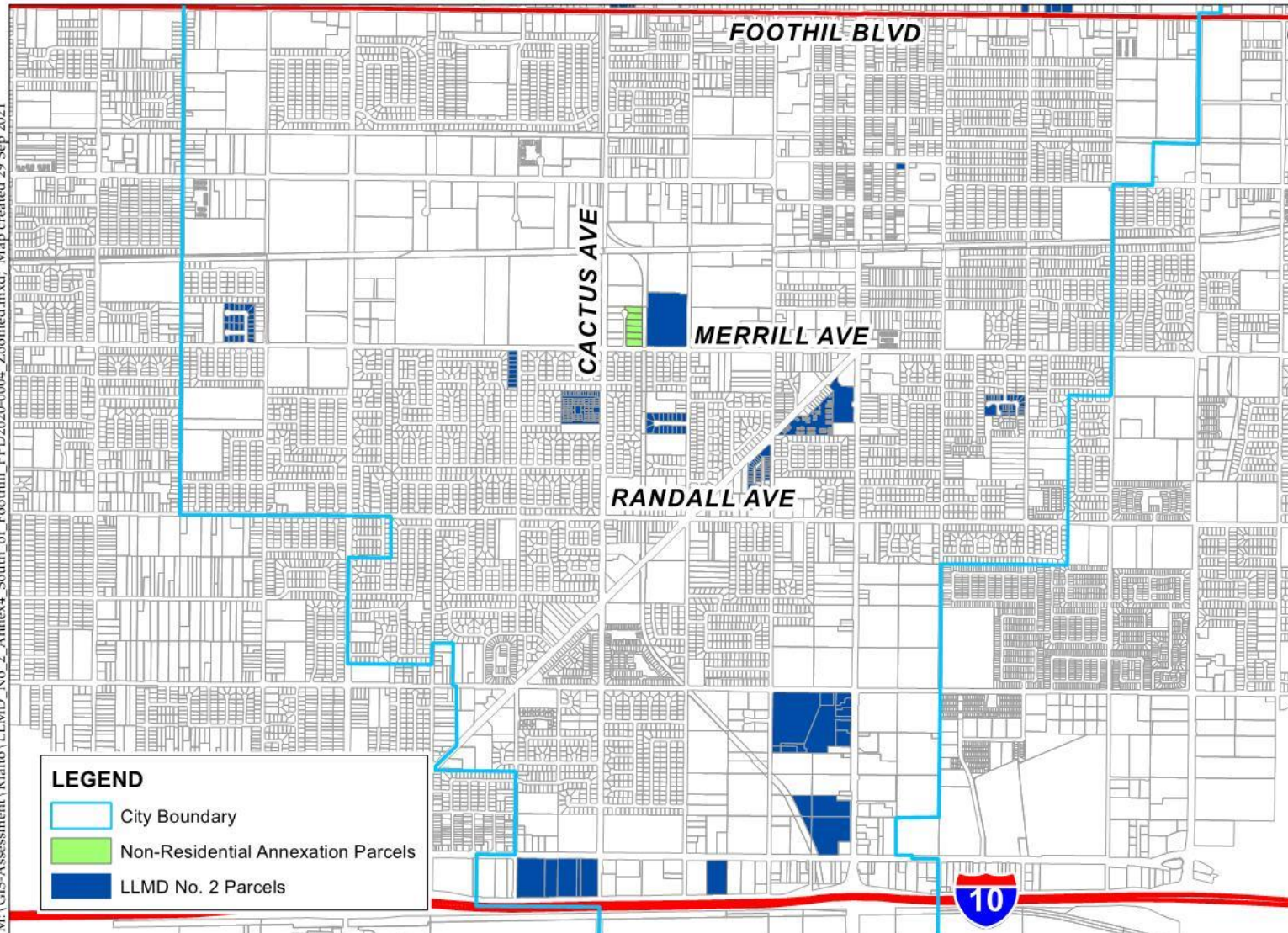


Landscape and Lighting Maintenance District No. 2

M:\GIS-Assessment\Rialto\LLMD No. 2 Annex4_South of Foothill_PPD2020-0004_Zoomed.mxd; Map created 29 Sep 2021



Source: San Bernardino Co. GIS, 2021

Landscaping and Lighting Maintenance District 2 South of Foothill Blvd.

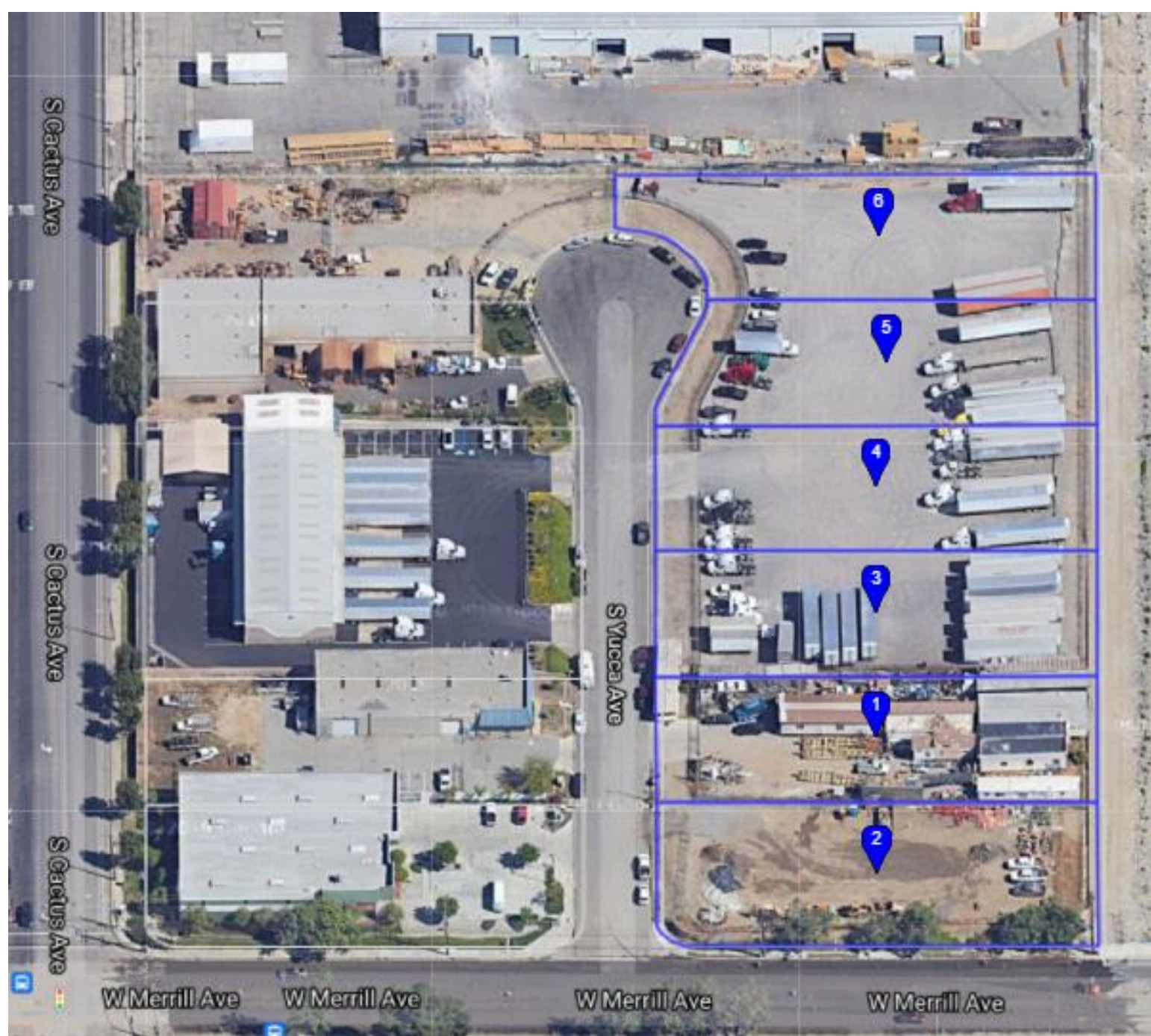
0 1,000 2,000 3,000 4,000
Feet



Non-Residential South of Foothill Blvd.

PPD #	CROSS STREETS
PPD 2020-0004	Northeast corner of Merrill Avenue and Yucca Avenue

Non-
Residential
PPD



PPD
2020-0004