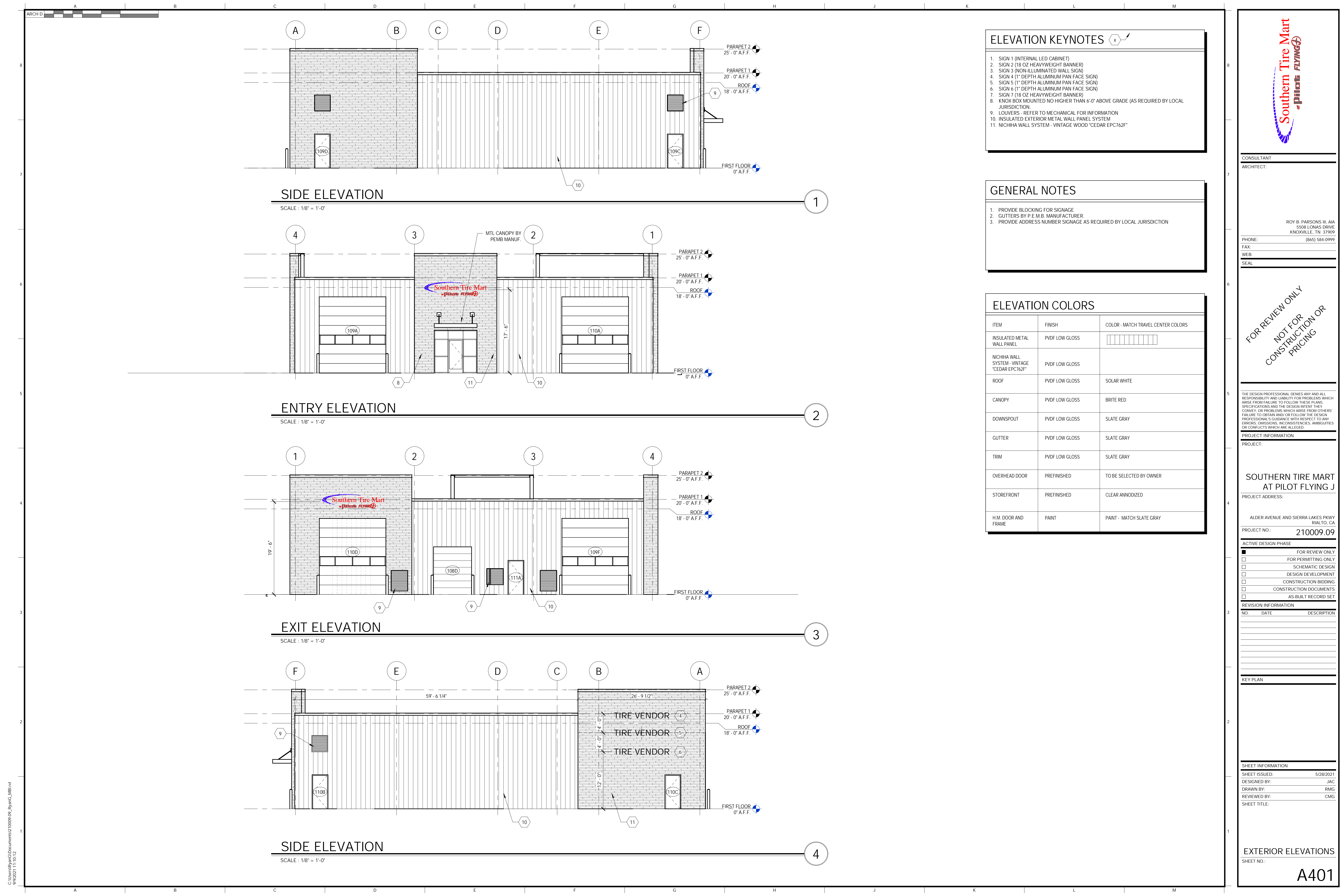


C:\Users\RyanC\Documents\210009.09_RyanC_MBR.rvt
5/28/2021 11:15:12



ELEVATION KEYNOTES

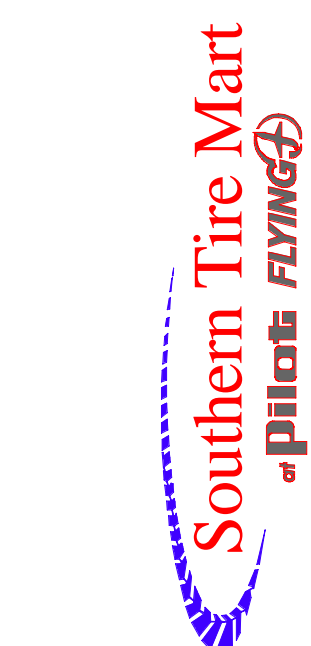
- SIGN 1 (INTERNAL LED CABINET)
- SIGN 2 (18 OZ HEAVYWEIGHT BANNER)
- SIGN 3 (NON-ILLUMINATED WALL SIGN)
- SIGN 4 (1" DEPTH ALUMINUM PAN FACE SIGN)
- SIGN 5 (1" DEPTH ALUMINUM PAN FACE SIGN)
- SIGN 6 (1" DEPTH ALUMINUM PAN FACE SIGN)
- SIGN 7 (18 OZ HEAVYWEIGHT BANNER)
- KNOX BOX MOUNTED NO HIGHER THAN 6'-0" ABOVE GRADE (AS REQUIRED BY LOCAL JURISDICTION)
- LOUVERS - REFER TO MECHANICAL FOR INFORMATION
- INSULATED EXTERIOR METAL WALL PANEL SYSTEM
- NICHIHA WALL SYSTEM - VINTAGE WOOD *CEDAR EPC762F*

GENERAL NOTES

- PROVIDE BLOCKING FOR SIGNAGE
- GUTTERS BY P.E.M.B. MANUFACTURER
- PROVIDE ADDRESS NUMBER SIGNAGE AS REQUIRED BY LOCAL JURISDICTION

ELEVATION COLORS

ITEM	FINISH	COLOR - MATCH TRAVEL CENTER COLORS
INSULATED METAL WALL PANEL	PVDF LOW GLOSS	
NICHIHA WALL SYSTEM - VINTAGE *CEDAR EPC762F*	PVDF LOW GLOSS	
ROOF	PVDF LOW GLOSS	SOLAR WHITE
CANOPY	PVDF LOW GLOSS	BRITE RED
DOWNSPOUT	PVDF LOW GLOSS	SLATE GRAY
GUTTER	PVDF LOW GLOSS	SLATE GRAY
TRIM	PVDF LOW GLOSS	SLATE GRAY
OVERHEAD DOOR	PREFINISHED	TO BE SELECTED BY OWNER
STOREFRONT	PREFINISHED	CLEAR ANNOIDIZED
H.M. DOOR AND FRAME	PAINT	PAINT - MATCH SLATE GRAY



CONSULTANT
ARCHITECT:
ROY B. PARSONS III, AIA
5508 LONAS DRIVE
KNOXVILLE, TN 37909
PHONE: (865) 584-0999
FAX:
WEB:
SEAL:

FOR REVIEW ONLY
NOT FOR
CONSTRUCTION OR
PRICING

THE DESIGN PROFESSIONAL DENIES ANY AND ALL RESPONSIBILITY AND LIABILITY FOR PROBLEMS WHICH ARISE FROM FAILURE TO FOLLOW THESE PLANS, SPECIFICATIONS AND THE DESIGN INTENT THEY CONVEY, OR PROBLEMS WHICH ARISE FROM OTHERS' FAILURE TO OBTAIN AND/OR FOLLOW THE DESIGN PROFESSIONAL'S GUIDANCE WITH RESPECT TO ANY ERRORS, OMISSIONS, INCONSISTENCIES, AMBIGUITIES OR CONFLICTS WHICH ARE ALLEGED.

PROJECT INFORMATION

PROJECT:
SOUTHERN TIRE MART
AT PILOT FLYING J
PROJECT ADDRESS:

ALDER AVENUE AND SIERRA LAKES PKWY
RIALTO, CA
PROJECT NO.: 210009.09

ACTIVE DESIGN PHASE

- ☒ FOR REVIEW ONLY
- ☐ FOR PERMITTING ONLY
- ☐ SCHEMATIC DESIGN
- ☐ DESIGN DEVELOPMENT
- ☐ CONSTRUCTION BIDDING
- ☐ CONSTRUCTION DOCUMENTS
- ☐ AS-BUILT RECORD SET

REVISION INFORMATION

NO.	DATE	DESCRIPTION

KEY PLAN

SHEET INFORMATION
SHEET ISSUED: 5/28/2021
DESIGNED BY: JAC
DRAWN BY: RMG
REVIEWED BY: CMG
SHEET TITLE:

EXTERIOR ELEVATIONS

SHEET NO.:

A401