

# Utility Commission Report

## November 2021

Reporting period September

2020





**RIALTO WASTEWATER**  
**MONTHLY OPERATIONS REPORT**

**Reporting Period**

**September, 2021**

**Prepared for: - Rialto Water Services**



**Prepared for - Veolia Water West Operating Services**



# **RIALTO WASTEWATER OPERATIONS AND MAINTENANCE REPORT**

## **Contents**

<b>EXECUTIVE SUMMARY</b>	<b>1</b>
<b>1. Collection System/Customer Service Log</b>	<b>1</b>
a. Collections group activities this month	1
b. Monthly Collection Service Map	1
c. Customer Service Call Outs -- See Item 9	1
<b>2. Wastewater Treatment Plant -- Monthly Overview</b>	<b>1</b>
<b>3. Treatment Facility Performance/Laboratory Activities</b>	<b>2</b>
a. See attached Monthly Performance Summary	2
b. Summary of Notices and Laboratory Tests/Reports filed with government agencies	2
c. Effluent Specification Exceedance Discussion	2
d. Valve exercising	2
<b>4. Monthly Safety Program Overview</b>	<b>2</b>
<b>5. Biosolids, Chemicals, and Utilities</b>	<b>2</b>
a. Monthly Biosolids Production	3
b. Monthly Chemical Consumption	3
c. Monthly Utilities Consumption	3
<b>1. Odor Complaints Received / Actions Taken</b>	<b>3</b>
<b>2. Major Equipment and/or Machinery Outages</b>	<b>3</b>
<b>3. Outside Agency Activities During the Month</b>	<b>3</b>
a. Government agency or property insurance inspections	3
b. Government agency environmental, health, or safety tests/monitoring	3
c. Government agency notices of violation received	3
d. Government agency monitoring	4
e. Other matters of concern	4
<b>4. Complaint Log</b>	<b>4</b>

## **Tables**

- \* Monthly Collection System Service Map
- \* Treatment Facility -- Monthly Performance Summary

# RIALTO WASTEWATER MONTHLY OPERATIONS REPORT

## EXECUTIVE SUMMARY

Highlights of this month's Wastewater O&M report include the following:

- \* The treatment plant performed well with all permit parameters compliant during the month. Effluent quality was met or, in a number of cases, was significantly better than permit limits.
- \* There was 1 residential call out and 1 sanitary sewer overflow for this reporting period.

## 1. Collection System/Customer Service Log

a. Collections group activities this month:

Category	Current Month	Prior Month	2021 Year to Date
Sanitary sewer cleaned conventional method, feet, which includes "Hot spot" cleaning	8,375.82	8,899.82	132,248.33
Sanitary sewer assessed using SLRAT method, feet	0	0	3,924
CCTV Inspection, miles (26 is annual goal)	2.23	3.68	21.07
Manhole Inspections	0	0	0
USA Dig Alert Markings, count	46	69	339
Residential call outs	1	0	8
Sanitary sewer overflows	1	0	1

b. September - Collection System Service Map

c. Customer Service Call Outs – See Item 9

## 2. Wastewater Treatment Plant – Monthly Overview

Significant events during the month were:

- \* "Wet end" the treatment plant performance was compliant during the month.
- \* On 9/9/21 there was 1 residential call out for this reporting period due to blocked storm water
- \* Lennar was laying electrical conduit for Rancho Verde residential project when they broke 8" sewer line. Contractor used their vactor to capture spill of approximately 300 gals and disposed of it in Sycamore lift station. Our vactor was onsite to assist if needed. Contractor made repair within 4 hours.

## 3. Treatment Facility Performance/Laboratory Activities

a. See attached Monthly Performance Summary

b. Summary of Notices and Laboratory Tests/Reports filed with government agencies Monthly submittals of State/Federal discharge report was completed in a timely fashion.

c. Effluent Specification Exceedance Discussion

See Section 2 above.

d. Valve exercising

Valves Exercised	Current Month	Prior Month	2021 Year to Date
Actual/Scheduled	0	4	55
Unscheduled	0	0	0

\* Valves turned that are not required PM

#### 4. Monthly Safety Program Overview

Category	Monthly Statistics
Safety Training Topics	Respiratory Protection / Asbestos Training
Lost Time Incidents, count *	0
Recordable Incidents, count	0
Near Miss Incidents, count	5
Vehicle Incidents, count	0

\* A lost time incident has not occurred in the past 239 days.

#### 5. Biosolids, Chemicals, and Utilities

a. Monthly Biosolids Production

Biosolids	Current Month Statistics	Prior Month Statistics	Year to Date Statistics
Quantity Produced, wet tons	1,020.25	994.37	10,505.61

Data is based on biosolids transported off site. Current month data is still under review.

b. Monthly Chemical Consumption

Chemical	Current Month	Prior Month
Sodium Hypochlorite, gallons	30,904	33,111
Sodium Bisulfite, gallons	10,055	11,290
Ferrous Chloride, gallons	3,477	3,772
Polymer, Gravity Belt Thickener, gallons	440	332
Ploymer, Belt Filter Press, gallons	708	710
Alum, gallons	71	66

c. Monthly Utilities Consumption

Utility	Current Month	Prior Month
Electricity WWTP, KWH	483,756	480,592
Electricity Lilac KWH	470	472
Electricity Sycamore LS, KWH	62	316
Electricity Ayala LS, KWH	6,008	5,565
Electricity Cactus LS, KWH	1,082	1,492
Electricity Ramrod LS, KWH	464	383
Electricity Frisbie Park LS, KWH	672	601
Electricity Agua Mansa LS, KWH	3,726	3,246
Natural Gas WWTP, Therms	2,439	2,621

**6. Odor Complaints Received/Actions Taken**

No odor complaints were received this month.

**7. Major Equipment and/or Machinery Outages**

Sludge Holding tank

**8. Outside Agency Activities during the Month**

a. Government agency or property insurance inspections

None during the month

b. Government agency environmental, health, or safety tests/monitoring

Permit testing was completed for this month

c. Government agency notices of violation received

No notices were received.

d. Government agency monitoring

e. Other matters of concern

## 9. Complaint Log

Date	Address	Comments	Personnel	Manhole	To Manhole
9/9/21	151 W. Baseline Rd Rialto, CA	We received a call from Joe Saldavar from Rialto Water. He reported excessive water running down the gutter. Paul Herman from Rialto Collections responded to the call, and found water coming from a blocked storm drain in the alleyway behind the Superior Market. Paul notified Public Works.	Paul Herman	N/A	N/A



## September 2021

Minimum	5,610	6,320	230	230	13,931	2.5	143.66	98.9	190	11,251	2.00	115	98.9
Maximum	7,880	7,800	300	300	17,764	2.5	159.71	99.2	260	15,763	2.00	124	99.2
Total	203,860	215,060	2,140	2,140	123,156	20.0	1,219.10	792.5	930	54,570	8.00	479	396.5
Average	6,795	7,169	268	268	15,394	2.5	152.39	99.1	233	13,643	2.00	120	99.1



# 1 - Table 2 MOR

September 2021

Date	Rialto Influent Conductivity (uS/cm)	Rialto WRF Effluent Eff Conductivity Daily Ave (uS/cm)	Influent COD mg/l	Final Effluent COD mg/l	Rialto WRF Eff Influent TDS mg/l	Filter Effluent TDS mg/l	Rialto WRF Effluent EFF FINAL TDS mg/L	Rialto Influent Inorganic Nitrogen mg/L	Rialto Effluent Inorganic Nitrogen mg/l as N
9/1/2021	1,276	881							
9/2/2021	1,161	878							
9/3/2021	1,381	869							
9/4/2021	1,457	882							
9/5/2021	1,281	885							
9/6/2021	1,410	891							
9/7/2021	1,579	891							
9/8/2021	1,583	872							
9/9/2021	1,488	871	700	18.0	490	440	500	36.00	8.50
9/10/2021	1,569	884							
9/11/2021	1,245	860							
9/12/2021	1,295	864							
9/13/2021	1,528	859							
9/14/2021	1,512	862							
9/15/2021	1,518	865							
9/16/2021	1,163	862							
9/17/2021	912	853							
9/18/2021	1,271	877							
9/19/2021	1,041	888							
9/20/2021	1,420	886							
9/21/2021	1,424	862							
9/22/2021	1,521	843							
9/23/2021	1,431	846							
9/24/2021	1,622	863							
9/25/2021	1,528	878							
9/26/2021	893	874							
9/27/2021	1,497	858							
9/28/2021	1,424	858							
9/29/2021	1,406	867							
9/30/2021	1,220	863							
Minimum	893	843	700	18.0	490	440	500	36.00	8.50
Maximum	1,622	891	700	18.0	490	440	500	36.00	8.50
Average	1,369	869	700	18.0	490	440	500	36.00	8.50

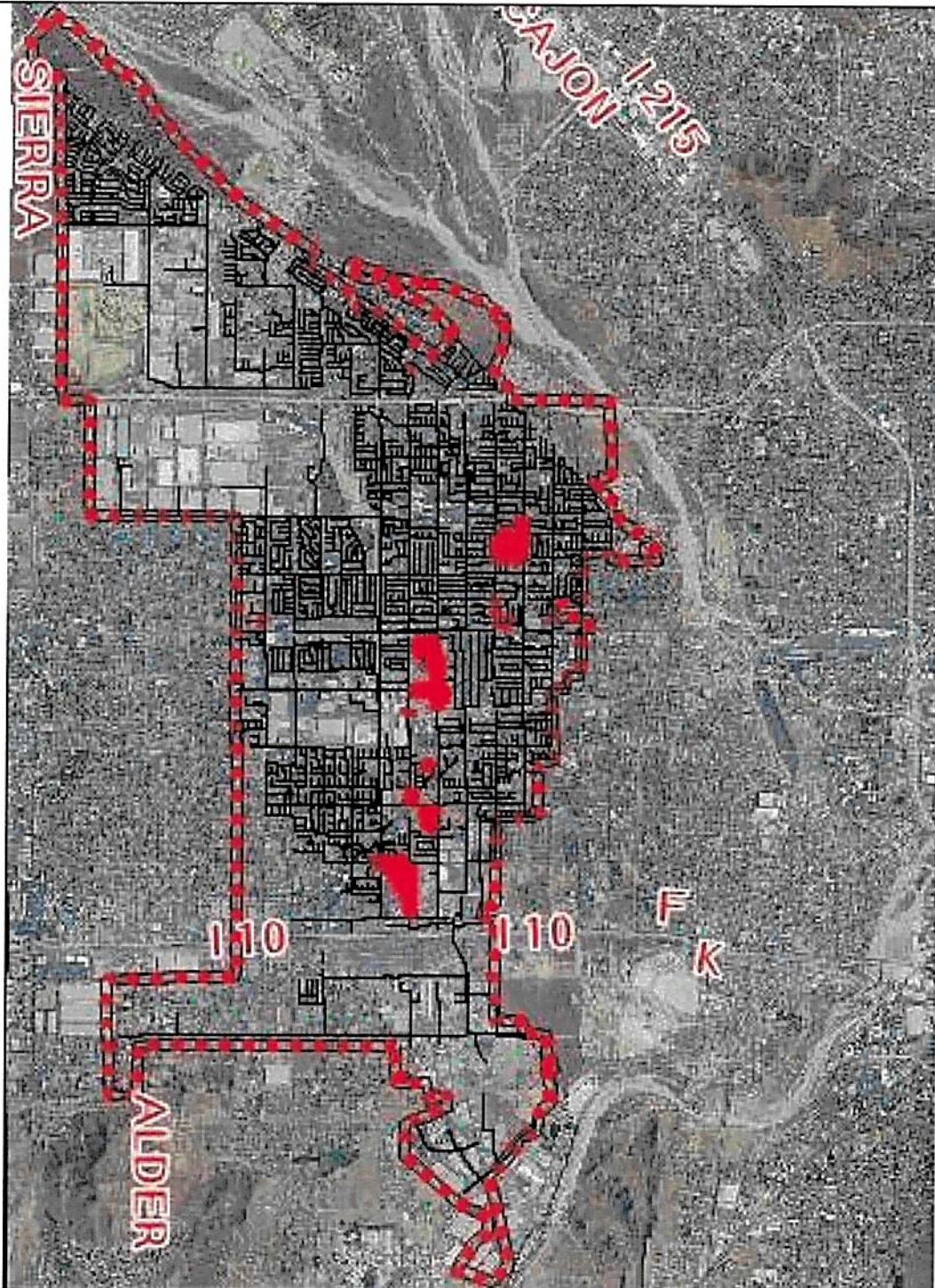


## September 2021

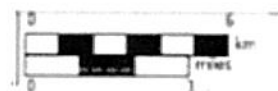
Minimum	6.58	7.10	28.2	<0.10	<1.8	<1.80	<2.0	<5.00	98,448	800	98,448
Maximum	7.91	7.43	30.5	<0.10	2.0	<1.80	<2.0	<5.00	148,766	21,400	148,766
Average	7.46	7.28	29.6	<0.10	<1.8	<1.80	<2.0	<5.00	121,299	7,647	121,299



## Monthly Collection System Service Map



--Pipe Cleaning - Sept 2021--



# **RIALTO WATER**

## **MONTHLY OPERATIONS REPORT**

**Reporting Period:**

**September 2021**

**Prepared for: Rialto Water Services**

**Prepared by: Veolia Water West Operating Services**

**RIALTO WATER**  
**OPERATIONS AND MAINTENANCE REPORT**

**Contents**

<b>I. EXECUTIVE SUMMARY</b>	<b>3</b>
A. Water Production Totals	4
B. Static Water Levels	6
<b>II. REGULATORY</b>	<b>7</b>
A. Regulatory Submittals	7
B. Sample Site Location Results	8
C. Violations	10
D. Source Water Total Dissolved Solids (TDS)	10
<b>III. HEALTH AND SAFETY</b>	<b>10</b>
A. Monthly Safety Program Overview	10
<b>IV. CHEMICAL USE</b>	<b>10</b>
<b>V. ELECTRICAL USE</b>	<b>11</b>
<b>VI. WATER QUALITY COMPLAINTS</b>	<b>11</b>
<b>VII. OPERATIONS UPDATE</b>	<b>11</b>
A. Operational Wells	12
B. Valve Activity	12
C. Hydrant Flushing	12
D. Sanitary Survey	13
<b>VIII. ASSET MANAGEMENT</b>	<b>13</b>
A. Main Breaks, Service Leaks, Adverse Water Quality and Health/Safety Issues	13
B. Major Equipment and/or Machinery Outages	13
<b>IX. RAINFALL TOTALS</b>	<b>14</b>

# **RIALTO WATER**

## **MONTHLY OPERATIONS REPORT**

### **I. EXECUTIVE SUMMARY**

Highlights of this month's Water O&M report include the following:

- The water distribution network achieved compliance with all permit requirements.
- No sample anomalies that require secondary sampling.
- No significant issues with water availability. The purchasing of water remained consistent and daily equalization tanks levels remained at anticipated volume for customer availability.
- The Preventative Maintenance Program, as well as Valve Exercising, continues to identify areas of focus for our Routine Repair and Replacement.

## A. Water Production Totals

Total water delivered into the Rialto system this month was 843.54 acre-feet. 746.98 acre-feet was delivered into the system from the groundwater wells (City 4A production is included in the well total). 77.23 acre-feet was delivered via the BLF transmission system (City 4A production has been deducted). 19.33 acre-feet came from the OPRTP.

SEPTEMBER 2021 DAILY PRODUCTION TOTALS IN ACRE FEET										
						Delivered Via BLF				
							Purchased			
DATE	Chino 2	City 2	Rialto 3	Rialto 5	Miro 3	City 4A	BOOSTER 6-9	Cactus <sup>1</sup>	OPRTP <sup>2</sup>	TOTAL <sup>3</sup>
9/1/21	6.73	0.00	7.67	0.00	2.01	10.44	3.97	3.44	0.00	23.82
9/2/21	5.85	5.65	8.47	0.00	0.00	7.27	7.05	7.83	0.00	34.85
9/3/21	3.81	5.16	6.77	0.00	0.66	8.01	2.64	9.74	0.00	28.78
9/4/21	5.26	6.09	7.19	0.00	0.00	8.49	6.57	3.03	0.00	28.14
9/5/21	5.28	4.43	6.86	0.00	0.00	9.99	4.52	8.04	0.00	29.13
9/6/21	5.33	0.00	8.49	0.00	0.00	6.79	10.10	4.38	0.00	28.30
9/7/21	6.70	2.66	7.00	0.01	0.00	10.40	7.90	3.83	0.00	28.10
9/8/21	4.32	6.79	7.83	0.00	0.00	6.40	7.19	4.11	0.00	30.24
9/9/21	5.81	5.12	7.46	0.00	0.00	8.80	7.71	3.33	0.00	29.43
9/10/21	5.35	6.67	6.43	0.00	0.00	8.62	2.32	8.33	0.00	29.10
9/11/21	5.00	6.72	8.61	0.00	0.00	8.38	6.75	4.35	0.00	31.43
9/12/21	5.12	6.83	6.89	0.00	0.00	10.31	6.43	3.83	0.00	29.10
9/13/21	5.42	5.56	7.55	0.00	0.00	6.69	9.02	4.52	0.00	32.07
9/14/21	5.46	5.63	6.36	0.00	0.00	8.55	0.28	8.63	0.00	26.36
9/15/21	5.51	5.38	7.39	0.00	0.00	8.33	7.09	5.38	0.21	30.96
9/16/21	5.23	6.43	7.62	0.00	0.00	8.34	6.36	3.47	1.14	30.25
9/17/21	5.46	1.64	7.76	0.00	0.00	8.62	8.06	3.76	1.36	28.04
9/18/21	5.42	0.00	7.64	0.00	0.00	8.50	7.32	3.17	1.29	24.84
9/19/21	5.07	0.00	6.47	0.00	0.00	8.69	7.90	5.94	1.17	26.55
9/20/21	5.37	4.90	7.39	0.00	0.00	8.38	5.07	3.83	1.27	27.83
9/21/21	5.53	5.97	8.31	0.00	0.00	7.71	7.78	4.22	1.19	33.00
9/22/21	6.08	1.43	7.05	0.00	0.00	8.59	6.50	3.56	1.34	25.96
9/23/21	4.41	0.00	6.66	0.00	0.00	9.11	7.25	3.58	1.14	23.04
9/24/21	5.65	4.75	8.72	0.00	0.00	7.76	10.15	3.99	1.39	34.65
9/25/21	5.58	4.94	6.43	0.00	0.00	8.71	7.32	3.31	1.32	28.90
9/26/21	5.42	5.38	7.05	0.00	0.00	8.43	6.08	2.73	1.26	27.92
9/27/21	5.83	0.00	8.63	0.00	0.00	9.29	8.31	3.24	1.44	27.45
9/28/21	4.64	0.00	6.01	0.00	0.00	7.17	8.33	3.26	1.09	23.33
9/29/21	5.78	0.00	8.03	0.00	0.00	9.11	7.70	3.42	1.38	26.31
9/30/21	4.93	0.00	6.69	0.00	0.00	7.51	0.00	2.70	1.34	15.66
TOTAL	161.35	108.13	221.43	0.01	2.67	253.39	193.67	136.95	19.33	843.54
MIN	3.81	0.00	6.01	0.00	0.00	6.40	0.00	2.70	0.00	15.66
MAX	6.73	6.83	8.72	0.01	2.01	10.44	10.15	9.74	1.44	34.85
AVE	5.38	3.60	7.38	0.00	0.09	8.45	6.46	4.57	0.64	28.12

<sup>1</sup> Measured at point of connection at Cactus Reservoir site including production from City 4A. Amount may vary compared to billing.

<sup>2</sup> Measured at point of connection at Cedar Reservoir site. Amount may vary as compared to billing.

<sup>3</sup> City 4A is not included in total. It has been accounted for in the Purchased total.



**SEPTEMBER 2021 DAILY BOOSTER TOTALS IN ACRE FEET**

<b>DATE</b>	<b>Booster 1</b>	<b>Booster 2</b>	<b>Booster 3</b>	<b>Booster 4</b>	<b>Booster 5</b>	<b>Booster 6-9</b>	<b>Booster 10</b>	<b>Booster 11</b>
9/1/21	0.00	0.00	0.00	3.52	0.00	3.97	0.00	0.00
9/2/21	0.00	0.00	7.58	7.10	5.24	7.05	0.00	0.00
9/3/21	0.00	0.00	7.58	2.40	5.93	2.64	0.00	0.00
9/4/21	0.00	0.00	8.17	4.23	0.00	6.57	0.00	0.00
9/5/21	0.00	0.00	6.22	1.57	4.49	4.52	0.00	0.00
9/6/21	0.00	0.00	5.79	5.64	0.00	10.10	0.00	0.00
9/7/21	0.00	0.00	6.60	1.51	0.00	7.90	0.00	0.00
9/8/21	0.00	0.00	6.84	5.81	0.00	7.19	0.00	0.00
9/9/21	0.00	0.00	6.69	1.93	0.00	7.71	0.00	0.00
9/10/21	0.00	0.00	7.12	6.28	4.08	2.32	0.00	0.00
9/11/21	0.00	0.00	4.98	0.00	0.56	6.75	9.52	0.00
9/12/21	0.00	0.00	7.96	1.51	0.00	6.43	3.24	0.00
9/13/21	0.00	0.00	5.77	5.24	0.00	9.02	0.00	0.00
9/14/21	0.00	0.00	2.21	0.79	4.84	0.28	7.41	0.00
9/15/21	0.00	0.00	5.07	2.56	1.34	7.09	3.86	0.00
9/16/21	0.00	0.00	7.33	5.08	0.00	6.36	0.00	0.00
9/17/21	0.00	0.00	7.74	2.85	0.00	8.06	0.00	0.00
9/18/21	0.00	0.00	6.62	0.00	0.00	7.32	0.00	0.00
9/19/21	0.00	0.00	4.68	0.00	3.13	7.90	0.00	0.00
9/20/21	0.00	0.00	5.42	0.93	0.00	5.07	5.85	0.00
9/21/21	0.00	0.00	6.15	3.07	0.00	7.78	3.50	0.00
9/22/21	0.00	0.00	6.84	0.99	0.00	6.50	0.00	0.00
9/23/21	0.00	0.00	1.98	4.88	0.00	7.25	0.00	0.00
9/24/21	0.00	0.00	6.88	1.72	0.00	10.15	7.61	0.00
9/25/21	0.00	0.00	5.77	3.28	0.00	7.32	0.30	0.00
9/26/21	0.00	0.00	6.22	0.51	0.00	6.08	5.35	0.00
9/27/21	0.00	0.00	7.62	0.00	0.00	8.31	0.00	0.00
9/28/21	0.00	0.00	5.81	2.04	0.00	8.33	0.00	0.00
9/29/21	0.00	0.00	7.54	0.00	0.00	7.70	1.04	0.00
9/30/21	0.00	0.00	4.38	4.78	0.00	0.00	0.00	0.00
<b>TOTAL</b>	<b>0.00</b>	<b>0.00</b>	<b>179.56</b>	<b>80.22</b>	<b>29.61</b>	<b>193.67</b>	<b>47.68</b>	<b>0.00</b>
<b>MIN</b>	<b>0.00</b>	<b>0.00</b>	<b>0.00</b>	<b>0.00</b>	<b>0.00</b>	<b>0.00</b>	<b>0.00</b>	<b>0.00</b>
<b>MAX</b>	<b>0.00</b>	<b>0.00</b>	<b>8.17</b>	<b>7.10</b>	<b>5.93</b>	<b>10.15</b>	<b>9.52</b>	<b>0.00</b>
<b>AVE</b>	<b>0.00</b>	<b>0.00</b>	<b>5.99</b>	<b>2.67</b>	<b>0.99</b>	<b>6.46</b>	<b>1.59</b>	<b>0.00</b>

## B. Static Water Levels

All City of Rialto wells are sounded each month, both active and inactive well sites. Depth-to-water is measured from the well head to the static water surface. Increases in depth-to-water represent a decrease in static water level.

Depth to Water													
Wells Depth to Pump	Historical Maximum Depth to Water	Oct	Nov	Dec	Jan	Feb	March	April	May	June	July	Aug	Sept.
Chino # 1 (580 ft) <b>In-active well</b>	<b>427'</b>	422'	423'	423'	422'	423'	423'	426'	426'	426'	426'	414'	414'
Chino # 2 (550 ft)	<b>366'</b>	364'	349'	350'	347'	346'	345'	346'	347'	349'	350'	348'	348'
City # 1 (260 ft) <b>Dry</b>	<b>392'</b>	243'	242'	243'	243'	230'	245'	245'	243'	247'	246'	247'	247'
City # 2 (480 ft)	<b>402'</b>	261'	256'	254'	253'	249'	249'	247'	245'	309'	272'	256'	249'
City # 3 (525 ft) <b>Out of Service</b>	<b>475'</b>	448'	448'	448'	448'	448'	448'	459'	459'	466'	465'	466'	468'
City # 4A (420 ft)	<b>406'</b>	384'	371'	378'	374'	365'	366'	374'	380'	380'	376'	383'	387'
City # 5 (385 ft) <b>In-active well</b>	<b>355'</b>	331'	331'	331'	331'	340'	331'	330'	330'	342'	344'	345'	344'
Rialto # 1 (650 ft) <b>In-active well</b>	<b>588'</b>	576'	571'	574'	571'	569'	571'	576'	576'	572'	571'	583'	576'
Rialto # 2 (550 ft) <b>In-active well</b>	<b>492'</b>	485'	485'	485'	489'	489'	489'	492'	492'	491'	491'	491'	490'
Rialto # 3 (509 ft)	<b>474'</b>	465'	464'	465'	465'	464'	466'	464'	467'	467'	474'	472'	472'
Rialto # 4 (450 ft) <b>In-active well</b>	<b>413'</b>	404'	404'	404'	404'	404'	405'	408'	404'	406'	406'	407'	407'
Rialto # 5 (560 ft)	<b>378'</b>	374'	373'	370'	373'	374'	373'	372'	373'	376'	376'	376'	378'
Rialto Well # 7 <b>In-active well</b>	<b>356'</b>	354'	353'	354'	354'	354'	353'	353'	354'	355'	355'	356'	355'
Miro # 3 (563 ft)	<b>487'</b>	486'	483'	483'	480'	480'	481'	463'	463'	470'	484'	485'	482'

## II. REGULATORY

All State of California and public health agency regulatory requirements were met.

### A. Regulatory Submittals

- Monthly Summary of Distribution System Coliform Monitoring
- NPDES Discharge Letter
- Conservation DRINC Report
- Stage 2 DBP Quarterly TTHM and HAA5 Report
- Quarterly Report for Disinfectant Residuals Compliance

Sample Test Result Standards			
Type of Sampling	Units of Measure	Detectible Limit for Reporting	Maximum Contaminant Level
Total Coliform	A	--	--
E. Coli	A	--	--
Nitrate as N	mg/L	0.20	10
Perchlorate (ClO <sub>4</sub> )	µg/L	2.0	6.0
Total Dissolved Solids	mg/L	--	500
Trihalomethanes	µg/L	0.50	80
Haloacetic Acid	µg/L	2.0	60
Perfluorooctanoic (PFOA)	ng/L	1.7	5.1
Perfluorooctanesulfonic (PFOS)	ng/L	1.7	6.5
P= Present A= Absent mg/L = parts per million µg/L = parts per billion ng/L = parts per trillion			

Sample Date 09/02/2021	Sample Site Location Results								
Type of Sampling	Chino 2	City 2	City 4A	Rialto 3	Rialto 5	Miro 3	BLF Cactus	BLF 6-9	OP RTP
Total Coliform	A	A	A	A	A	A	A	A	A
E. Coli	A	A	A	A	A	A	A	A	A
Nitrate as N	3.7								
Perchlorate (ClO <sub>4</sub> )	2.1*			12*	<2.0	15*			
Total Dissolved Solids	220	200	300	220	220	220	320	330	220
Perfluorooctanoic (PFOA)					4.1				
Perfluorooctanesulfonic (PFOS)					<1.7				

\*Sample is from the well head so it is before disinfection & treatment. Treatment is performed before it goes into the distribution system. Water going into the distribution system is <2.0 (non-detect).

Sample Date 09/10/2021	Sample Site Location Results			
Type of Sampling	749 E Holly	978 N Driftwood	1228 W Merrill	101 E Valley
<b>Trihalomethanes</b>				
Bromodichloromethane	<0.50	<0.50	<0.50	0.69
Bromoform	<0.50	0.50	<0.50	<0.50
Chloroform (Trichloromethane)	<0.50	<0.50	<0.50	0.66
Dibromochloromethane	<0.50	0.60	<0.50	0.79
Total Trihalomethanes (TTHM)	<0.50	1.1	<0.50	2.1
<b>Haloacetic Acid</b>				
Monochloroacetic Acid	<2.0	<2.0	<2.0	<2.0
Dichloroacetic Acid	<1.0	<1.0	<1.0	<1.0
Trichloroacetic Acid	<1.0	<1.0	<1.0	<1.0
Monobromoacetic Acid	<1.0	<1.0	<1.0	<1.0
Dibromoacetic Acid	<1.0	<1.0	<1.0	<1.0
Total Haloacetic Acids (HAA5)	<2.0	<2.0	<2.0	<2.0

## B. Sample Site Location Results

Rialto Distribution Sample Results						
September 2021						
Sample Location	Free Cl Res (Field)	Total Coliform	E. Coli	Apparent Color	Odor Threshold	Turbidity
<b>CYCLE 1 - 09/08/21</b>	<b>mg/l</b>	<b>P/A</b>	<b>P/A</b>	<b>Color Units</b>	<b>TON</b>	<b>NTU</b>
335 W. Rialto	0.92	A	A			
1228 W. Merrill	0.91	A	A			
256 N. Fillmore	0.96	A	A			
987 W. Grove	0.97	A	A			
978 N. Driftwood	0.91	A	A			
1451 N. Linden	0.90	A	A			
469 W. Jackson	0.94	A	A			
935 E. Mariposa	0.99	A	A			
1000 N. Joyce	0.98	A	A			
766 N. Chestnut	1.01	A	A			
149 W. Victoria	0.97	A	A			
313 E. McKinley	0.99	A	A			
609 E. South	0.95	A	A			
273 E. Alru	0.99	A	A			
1161 S. Lilac	1.00	A	A			
101 E. Valley	0.96	A	A			
<b>CYCLE 2 - 09/13/21</b>	<b>mg/l</b>	<b>P/A</b>	<b>P/A</b>	<b>Color Units</b>	<b>TON</b>	<b>NTU</b>
210 N. Park	1.01	A	A			
101 S. Larch	0.98	A	A			
320 N. Wisteria	0.96	A	A			
861 W. Grove	0.92	A	A			
1168 N. Glenwood	0.99	A	A			
1320 N. Fitzgerald	0.95	A	A			
860 N. Willow	0.89	A	A			
209 E. Cornell	0.91	A	A			
643 E. Margarita	0.95	A	A			
1170 N. Terrace Rd.	0.98	A	A			
681 E. Erwin	0.88	A	A			
402 E. Merrill	0.91	A	A			
261 W. Wilson	0.96	A	A			
532 S. Iris	0.92	A	A			
281 W. Hawthorne	0.99	A	A			
379 W. Valley	1.02	A	A			

Rialto Distribution Sample Results						
September 2021						
Sample Location	Free Cl Res (Field)	Total Coliform	E. Coli	Apparent Color	Odor Threshold	Turbidity
<b>CYCLE 3 - 09/20/21</b>	<b>mg/l</b>	<b>P/A</b>	<b>P/A</b>	<b>Color Units</b>	<b>TON</b>	<b>NTU</b>
236 N. Willow	1.20	A	A	<3.0	<1.0	<0.10
775 E. Foothill	1.30	A	A	<3.0	<1.0	<0.10
878 N. Primrose	1.20	A	A	<3.0	<1.0	<0.10
369 E. Van Koevering	1.30	A	A	<3.0	<1.0	<0.10
274 W. Valencia	0.80	A	A	<3.0	<1.0	<0.10
1566 N. Fillmore	1.00	A	A	<3.0	<1.0	<0.10
932 N. Idyllwild	1.00	A	A	<3.0	<1.0	<0.10
644 N. Smoketree	1.00	A	A	<3.0	<1.0	<0.10
605 W. Rosewood	1.00	A	A	<3.0	<1.0	<0.10
1189 W. Second	1.00	A	A	<3.0	<1.0	<0.10
775 W. Rialto	1.00	A	A	<3.0	<1.0	<0.10
211 E. Wilson	1.10	A	A	<3.0	<1.0	0.17
595 E. Huff	1.10	A	A	<3.0	<1.0	<0.10
1005 S. Riverside	1.10	A	A	<3.0	<1.0	<0.10
794 S. Verde	0.90	A	A	<3.0	<1.0	<0.10
1055 W. Bloomington	0.90	A	A	<3.0	<1.0	<0.10
<b>CYCLE 4 - 09/29/21</b>	<b>mg/l</b>	<b>P/A</b>	<b>P/A</b>	<b>Color Units</b>	<b>TON</b>	<b>NTU</b>
375 S. Cactus	1.40	A	A			
101 S. Linden	1.10	A	A			
234 N. Larch	1.20	A	A			
575 N. Driftwood	1.10	A	A			
1355 W. Shamrock	1.20	A	A			
992 N. Yucca	1.00	A	A			
481 W. Cornell	1.20	A	A			
158. E. Shamrock	1.25	A	A			
749 E. Holly	1.10	A	A			
545 E. Victoria	1.10	A	A			
200 N. Sycamore	1.20	A	A			
407 E. Allen	1.20	A	A			
399 E. Montrose	1.40	A	A			
856 S. Orange	1.40	A	A			
911 S. Cactus	1.20	A	A			
220 W. Valley	1.10	A	A			
P/A + Present or Absent						

### C. Violations

No violations were received during this reporting period.

### D. Source Water Total Dissolved Solids (TDS)

Veolia has a goal of maintaining an acceptable blended TDS level between all its sources. This goal is achieved by shifting production to or from the lowest TDS wells or purchased low TDS water while adhering to the overall water supply strategy and meeting system demands. The TDS was 251 mg/L for the month of September as compared to 242 mg/L in August. The TDS levels are below the secondary maximum contaminant level requirements.

## III. HEALTH AND SAFETY

### A. Monthly Safety Program Overview

Category	Monthly Statistic
Safety Training Topics	Respiratory Protection Asbestos Awareness
Lost Time Incidents, count*	0
Recordable Incidents, count	0
Near Miss Incidents, count	8
Vehicle Incidents, count	0

\*A lost time incident has not occurred in the past 2909 days

## IV. CHEMICAL USE

Sodium hypochlorite is the only chemical added to the water system. A total of 2139 gallons of sodium hypochlorite was used in September as compared to 2915 gallons used in August.

## **V. ELECTRICAL USE**

Southern California Edison (SCE) has not provided all data for September 2021. Therefore, we are unable to report the electrical use for this month. We will provide the data as it is received, thus will include yearly usage received to date.

SCE		kWh
Year	Month	Billed Usage
2020	September	595,500
2020	October	437,491
2020	November	356,532
2020	December	318,451
2021	January	301,988
2021	February	336,907
2021	March	405,185
2021	April	509,848
2021	May	605,215
2021	June	557,384
2021	July	568,826
2021	August	669,924

## **VI. WATER QUALITY COMPLAINTS**

No complaints were received during this reporting period.

## **VII. OPERATIONS UPDATE**

The overall operational strategy is to meet the daily water demand. The City of Rialto water system has six operational wells, one of which is owned by the County of San Bernardino and operated by Veolia; Oliver P. Roemer Treatment Plant (OPRTP), which is jointly owned by the City (25%) and West Valley Water District (WVWD); purchased water through the Baseline Feeder (BLF) system from San Bernardino Valley Municipal Water District (SBVMWD); and, if required to meet demand, additional water can be supplied by the City of San Bernardino (CSB) through the BLF for emergency supply only with no guarantee of actual delivery. Water produced from City Well 4A discharges into the BLF and its production is included in deliveries from that shared transmission line when City Well 4A is in service.



The overall pumping strategy is based on adjudicated rights, well availability, remediation requirements, and quality of source, cost to operate, and varying weather conditions. TDS effluent concentrations for the City of Rialto WWTP are taken into consideration when operating the facilities and water sources.

**A. Operational Wells**

Miro Well 3 was out of service due to electrical issues with the motor drive.

**B. Valve Activity**

On the basis of information collected in 2019, Veolia now has a baseline assessment of all valves and has initiated a new cycle of valve exercising. Zero valves were exercised for the month of September.

**C. Hydrant Flushing**

Veolia reviewed the original hydrant flushing list that identified 83 hydrants that were to be flushed annually; the review was completed in 2018. Veolia has completed all of the required flushing for 2020. In September, zero hydrant flushing was performed. Veolia is pending confirmation from DDW regarding the reduction of hydrants that require this exercise. If confirmed, there will be approximately 63 hydrants that will be required to be flushed.

<b>Hydrant/Dead End Flushing Progress</b>	
	<b>2021</b>
January	0
February	0
March	39
April	19
May	0
June	1
July	0
August	0
September	0
<b>Total</b>	<b>59</b>
<b>Progress % (94)</b>	

#### **D. Sanitary Survey**

Sanitary surveys are completed every three (3) to five (5) years; the last survey was completed by the Department of Drinking Water (DDW) in 2015. In anticipation of the next survey (pending on DDW to schedule), Veolia has reviewed all the regulatory conditions required and is prepared for the next sanitary survey.

### **VIII. ASSET MANAGEMENT**

The following work orders were completed for the month of September:

- Preventive Maintenance –189
- Corrective Maintenance –54
- Predictive Maintenance –0

28 - PM's are scheduled for October 2021.

#### **A. Main Breaks, Service Leaks, Adverse Water Quality and Health/Safety Issues**

Corrective Work Order labor hours were dedicated to one pipe line and seven hydrant repairs.

#### **B. Major Equipment and/or Machinery Outages**

Miro Well 3 was out of service due to electrical issues with the motor drive.

## IX. RAINFALL TOTALS

SEASON	JUL	AUG	SEP	OCT	NOV	DEC	JAN	FEB	MAR	APR	MAY	JUN	TOTAL
2016-17	0.00	0.00	0.00	0.55	3.18	1.52	6.93	1.73	0.40	0.00	0.20	0.00	14.51
2017-18	0.00	0.53	0.00	0.00	0.00	0.00	1.02	0.80	2.87	0.00	0.00	0.00	5.22
2018-19	0.00	0.00	0.00	0.00	1.06	1.81	3.96	6.70	1.79	0.00	1.31	0.00	16.63
2019-20	0.00	0.00	0.00	0.00	0.64	1.52	0.23	0.33	1.18	3.42	0.00	0.00	7.32
2020-21	0.00	0.00	0.00	0.00	0.85	1.02	2.55	0.05	1.13	0.00	0.00	0.00	5.60
2021-22	0.53	0.00	0.00										0.53
<div> <div>July 21- June 22 = 0.53 INCHES</div> <div>YEAR TO DATE FOR 2021 = 4.26 INCHES</div> <div>AVG. RAINFALL FOR LAST FIVE YEARS 9.86 INCHES</div> </div>													
AVG. RAINFALL FOR SAN BERNARDINO COUNTY FOR THE LAST 100 YE										16.25 INCHES			
2021	Jan	Feb	Mar	Apr	May	Jun	Jul	Aug	Sep	Oct	Nov	Dec	Total
Totals	2.55	0.05	1.13	0.00	0.00	0.00	0.53	0.00	0.00				4.26

## Highland - Los Angeles Basin - Station 251

Month Year	Total ETo (in)	Total Precip (in)	Avg Sol Rad (Ly/day)	Avg Vap Pres (mBars)	Avg Max Air Temp (°F)	Avg Min Air Temp (°F)	Avg Air Temp (°F)	Avg Max Rel Hum (%)	Avg Min Rel Hum (%)	Avg Rel Hum (%)	Avg Dew Point (°F)	Avg Wind Speed (mph)	Avg Soil Temp (°F)
Jan 2021	2.58	2.66	259	6.2	68.8 K	41.1 K	53.7 K	70	26	47 K	31.7 K	3.4	51.0
Feb 2021	3.21	0.37	349	6.7 K	69.4	42.0	55.1	71	26	46 K	32.7 K	3.7	53.0
Mar 2021	4.21	1.65	413	7.3 K	68.6	42.1 K	54.9 K	78	29	52 K	35.6 K	4.0 K	55.0
Apr 2021	5.39	0.04	482	9.4 K	77.4	50.1	62.9	77	29	50 K	42.1 K	4.4 K	62.8
May 2021	6.50	0.04 K	567	12.2 K	79.8	54.6 K	65.9	85	34	57 K	49.6 K	4.8 K	67.1
Jun 2021	7.59 K	0.02 K	654	14.2 K	92.2 K	60.3 K	75.1 K	76 K	26 K	48 K	53.4 K	4.3	72.3
Jul 2021	8.30 K	1.12	624	15.4	97.1	66.5 K	80.8	72	23	43	55.9	4.4	75.8
Aug 2021	7.46 K	1.39 K	576 K	14.5 K	94.4 K	64.9	79.0 K	71 K	25 K	44	54.2	4.2 K	74.8 K
Sep 2021	5.92 K	0.99	498	13.8	91.1	61.8	75.5	74	26	47	52.5	3.6	73.3
Tots/Avgs	51.16	8.3	491	11.1	82.1	53.7	67.0	75	27	48	45.3	4.1	65.0

**RIALTO**  
**CUSTOMER SERVICE & REVENUE**  
**MONTHLY OPERATING REPORT**

**Reporting Period:**

**September 2021**

**Prepared for: Rialto Water Services**

**Prepared by: Veolia Water West Operating Services**



## Table of Contents

<b>I. CUSTOMER SERVICE SUMMARY .....</b>	<b>3</b>
<b>II. CALL CENTER PERFORMANCE .....</b>	<b>3</b>
<b>III. AUTOMATED SERVICES .....</b>	<b>3</b>
<b>IV. CONSUMPTION &amp; BILLING.....</b>	<b>4</b>
<b>A. Consumption .....</b>	<b>4</b>
<b>B. Billing.....</b>	<b>5</b>
<b>V. REVENUE &amp; AGING .....</b>	<b>5</b>
<b>A. Revenue .....</b>	<b>5</b>
<b>B. Aging .....</b>	<b>6</b>
<b>C. Bad Debt.....</b>	<b>6</b>
<b>VI. SERVICE ORDERS .....</b>	<b>7</b>
<b>VII. OTHER ACTIVITIES .....</b>	<b>7</b>
<b>VIII. REVENUE REPORT.....</b>	<b>7</b>
<b>A. Revenue Summary .....</b>	<b>7</b>
<b>B. Non Rate Revenue - Extraterritorial Customers .....</b>	<b>7</b>
<b>C. Non-Rate Revenue – Other .....</b>	<b>8</b>
<b>D. Development Impact Fees.....</b>	<b>8</b>
<b>E. Rialto Basin Water Rights and Leasing .....</b>	<b>8</b>
<b>F. Cash Collections by Payment Method – Rialto Water Services .....</b>	<b>9</b>
<b>G. Payment Collection Method – Fiscal Year to Date .....</b>	<b>10</b>
<b>H. Cash Collections on Behalf of the City of Rialto-Prior Year Comparison.....</b>	<b>10</b>
<b>I. Non-Rate Revenue + Utility Revenue Collections Prior Year Comparison .....</b>	<b>10</b>
<b>J. Non-Rate Revenue + Utility Revenue Collected Fiscal Year-to-Date .....</b>	<b>11</b>
<b>K. Increase in Cash Collections and Fund Distribution—Prior Year Comparison .....</b>	<b>11</b>
<b>L. Non-Incode Customer Accounts Receivable Aging .....</b>	<b>12</b>

## I. CUSTOMER SERVICE SUMMARY

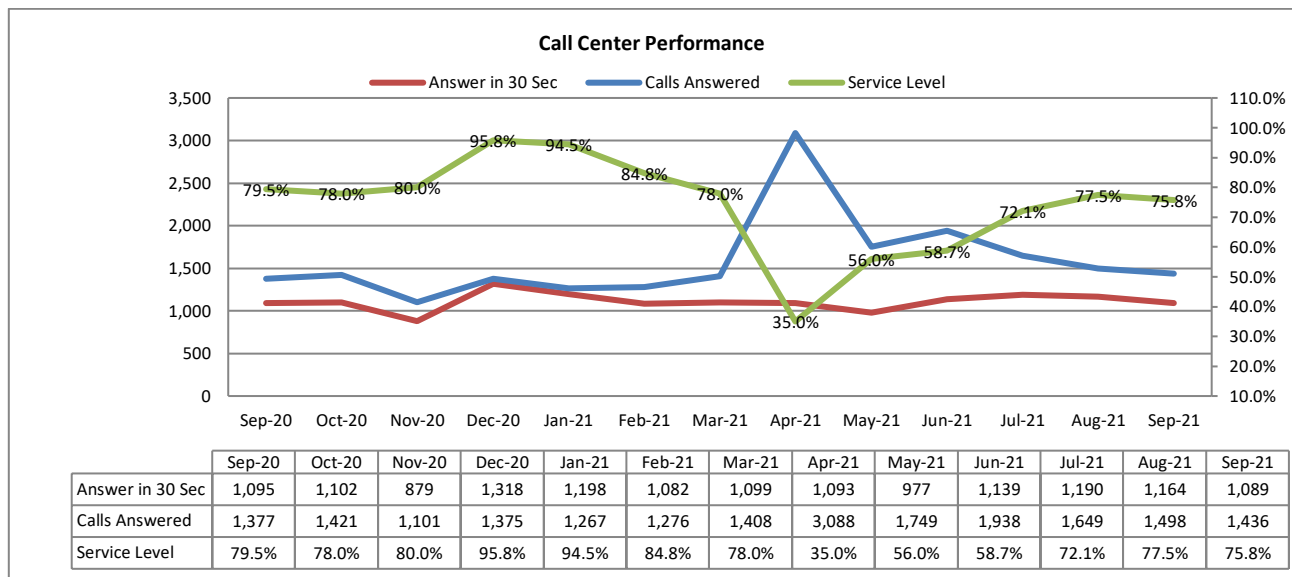
During this reporting month, a total of 1,436 calls were answered. Out of this total number of calls, 1,088 or 75.8% of the calls were answered within the first 30 seconds.

Water consumption decreased by 19.7% when compared against previous month and decreased by 15.6% when compared against the prior year.

Sewer revenue was very similar to the prior year.

## II. CALL CENTER PERFORMANCE

During this reporting month, a total of 1,436 calls were answered. Out of this total number of calls, 1,088 or 75.8% of the calls were answered within the first 30 seconds.



## III. AUTOMATED SERVICES

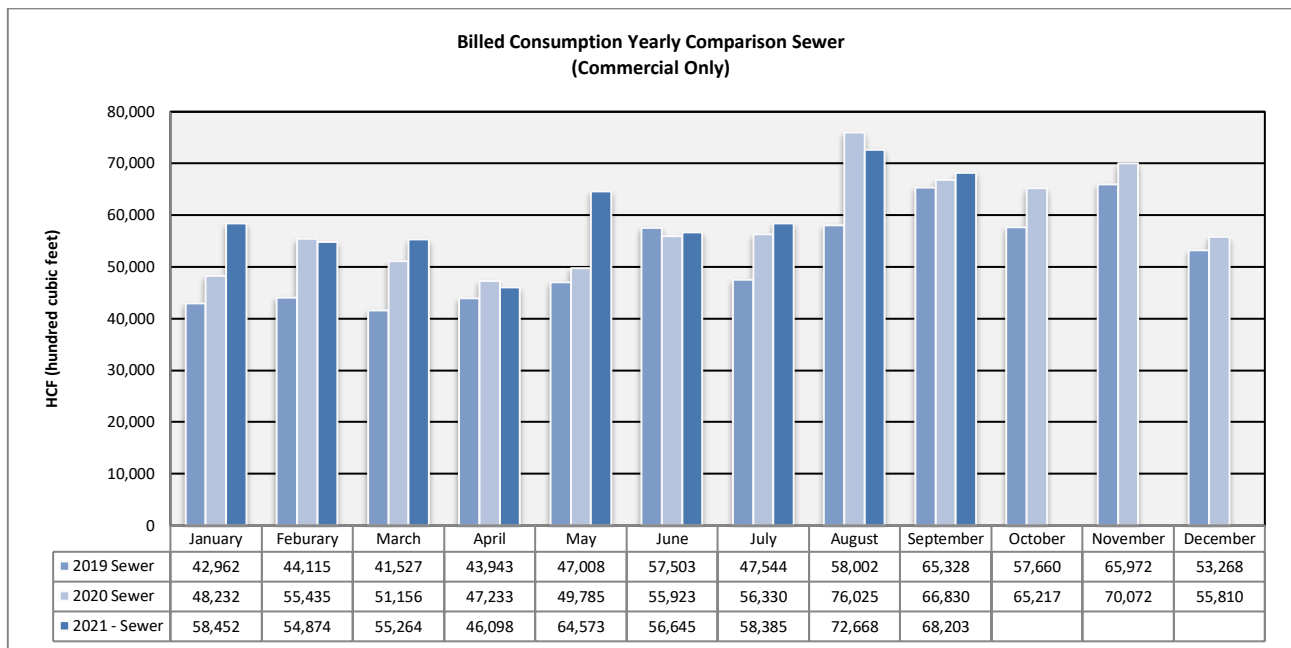
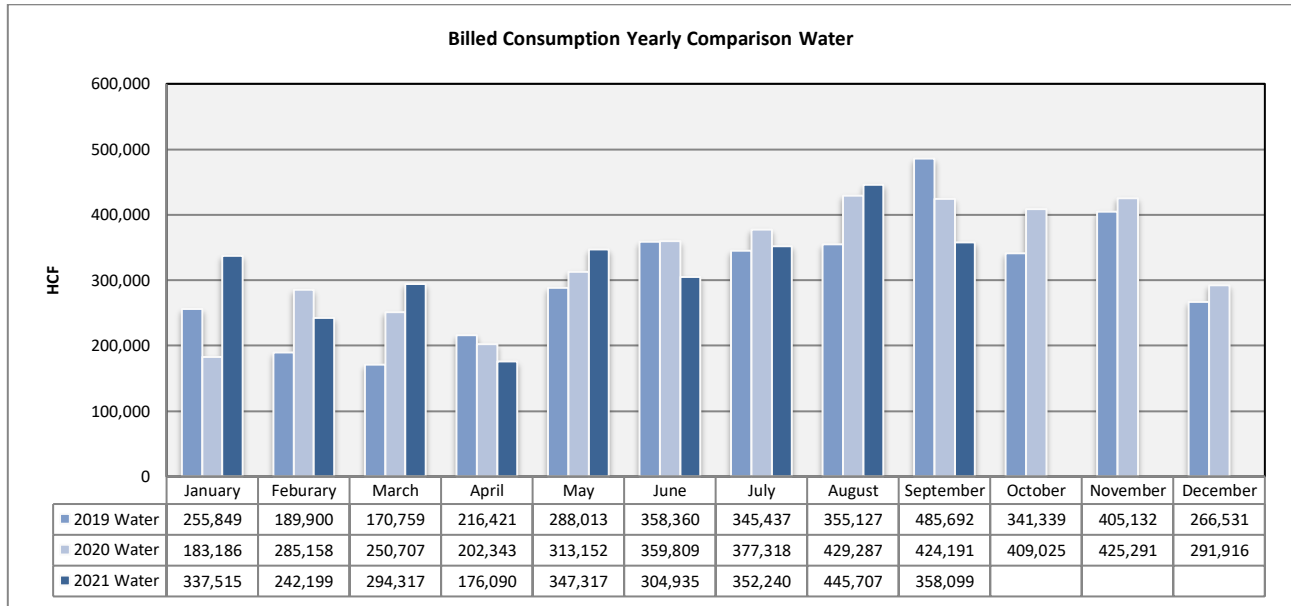
About 9,435 or 43.4% of the rate payers have created log-ins to access their accounts online. Of these customers, with online access, 47% have chosen the e-bill option. This e-bill participation is increase of 9% when compared against September 2020.

	Sep-20	Oct-20	Nov-20	Dec-20	Jan-21	Feb-21	Mar-21	Apr-21	May-21	Jun-21	Jul-21	Aug-21	Sep-21
Number of Bills	21,217	21,212	21,273	21,222	21,302	21,355	26,395	21,497	21,486	21,532	21,583	21,628	21,702
Number of Bill Adjustments (during billing)	30	23	27	41	30	37	64	27	16	14	15	14	13
Automated Over the Phone Payments	2,978	3,003	2,531	3,133	3,003	2,823	3,259	1,909	2,035	2,609	2,695	2,469	2,608
Online Payment	7,185	7,365	6,061	7,325	6,496	6,881	8,329	6,642	6,289	8,153	7,492	7,051	7,373
E-bill Participants	4,037	4,049	4,061	4,089	4,127	4,230	4,272	4,298	4,316	4,361	4,411	4,441	4,479
Auto Pay Participants (New Portal)	2,610	2,620	2,646	2,666	2,715	2,740	2,774	2,816	2,871	2,918	2,962	3,005	3,037
PayNearMe	394	397	354	714	610	664	578	567	377	410	359	317	337

## IV. CONSUMPTION & BILLING

### A. Consumption

Water consumption decreased by 19.7% when compared against previous month and decreased by 15.6% when compared against the prior year. No new trend is being observed, other than normal fluctuations from one month to next.



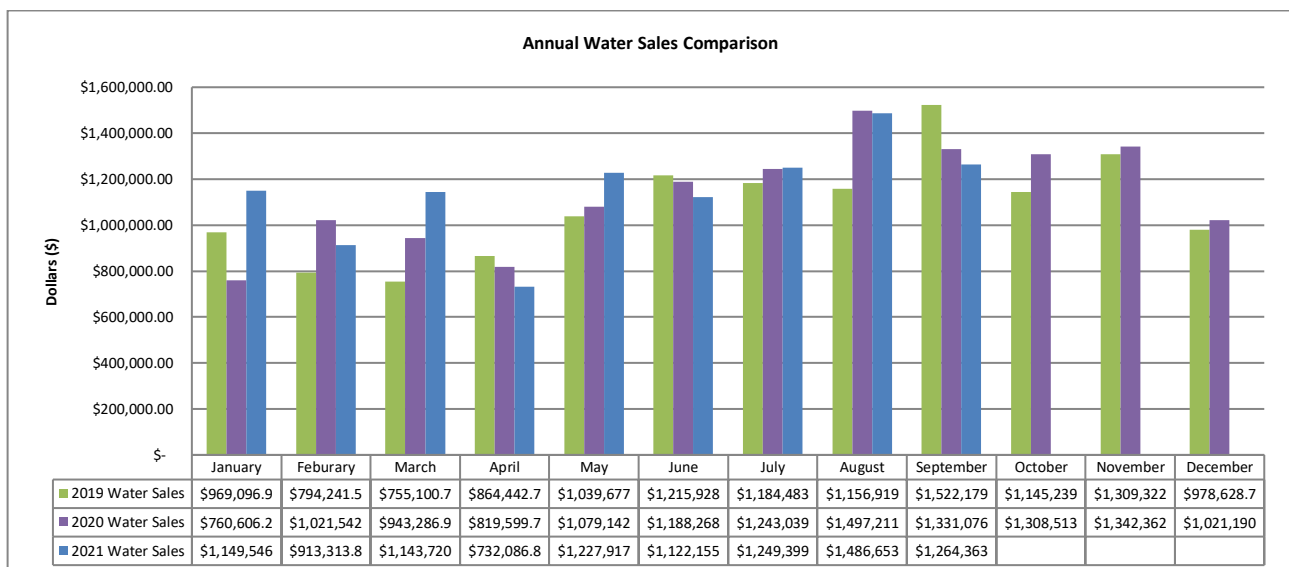
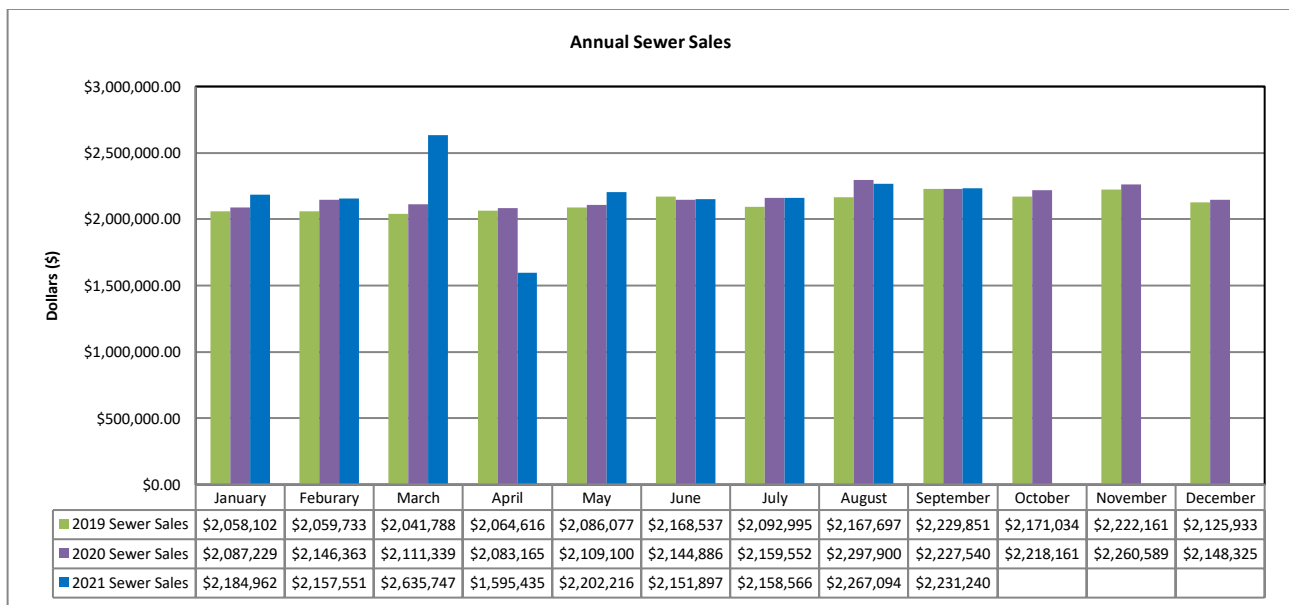
## B. Billing

A total of 21,702 bills were mailed or sent out electronically in September. Billing accuracy was 99.9% with thirteen (13) requiring adjustments.

## V. REVENUE & AGING

### A. Revenue

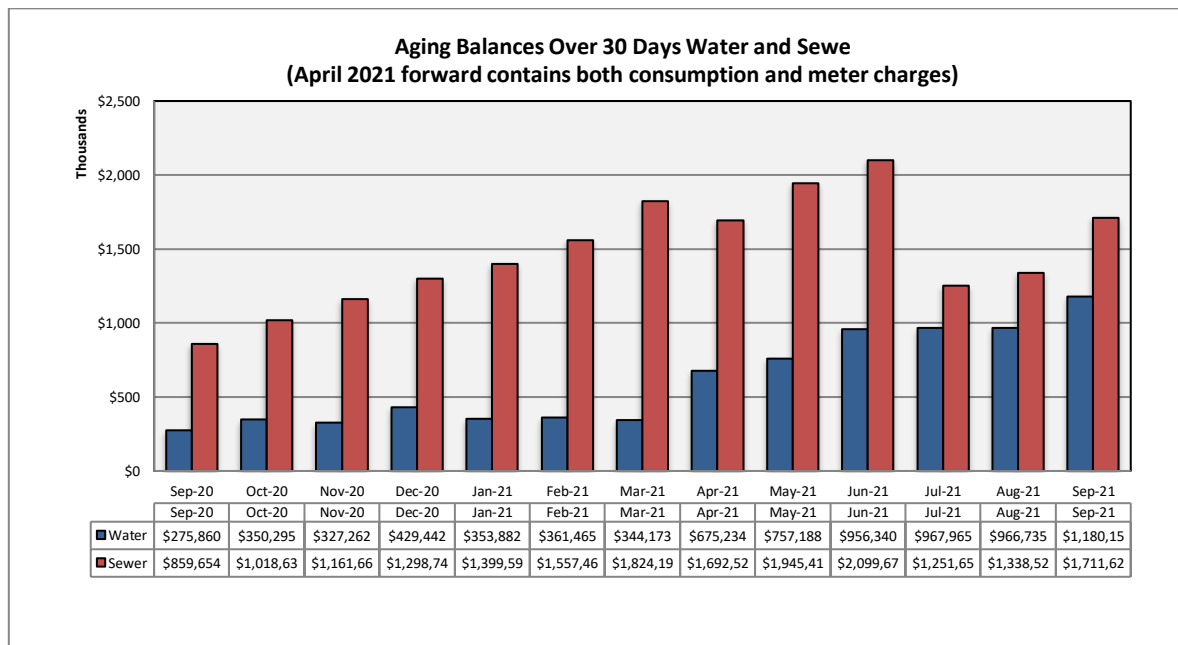
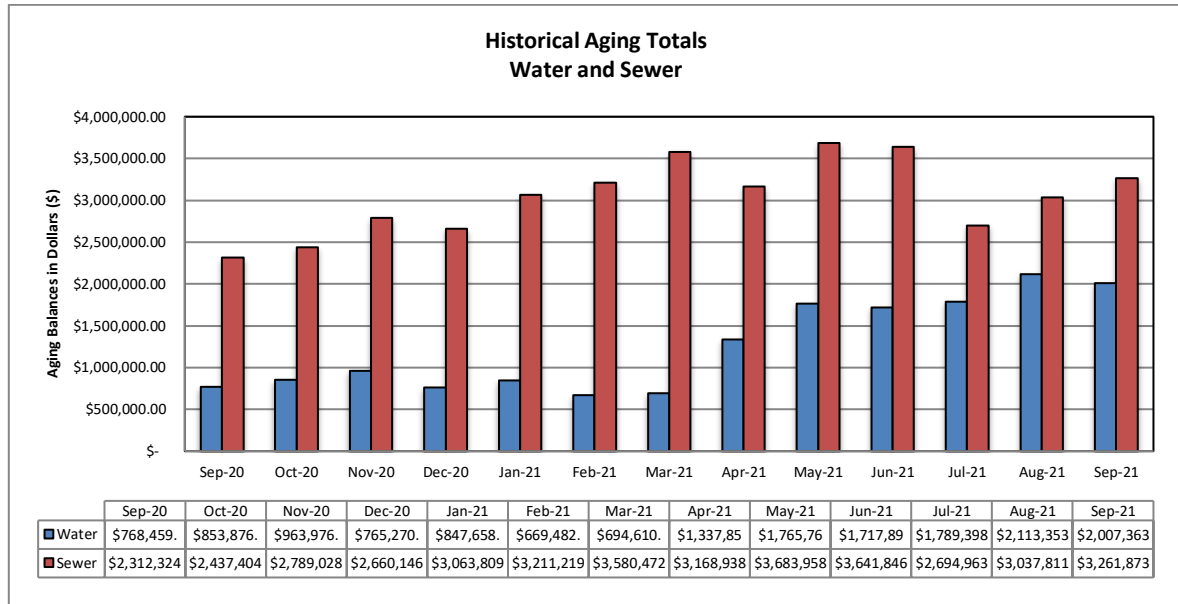
Sewer revenue has increased by 0.2% and water revenue had decreased by 5.0% when compared against the prior year. No new trend is being observed, other than normal fluctuations from one month to next.





## B. Aging

The total aging balance has increased 2.3% from the previous month, *see first table below*. For balances >30-days only, water has increased 22.1% and wastewater has increased 27.9%.



## C. Bad Debt

No accounts were sent over to collection agency this month.

## **VI. SERVICE ORDERS**

236 service orders were initiated by the customer service team during the reporting month. Of this total, 183 service orders or 77% were due to occupant changes.

## **VII. OTHER ACTIVITIES**

No work time losses were experienced in September. Everyone at Veolia is striving to achieve “zero harm safety record” by practicing the knowledge gained during monthly safety training events.

Following the regulations, water disconnection has been discontinued and late penalties are being waived. Quantity of delinquent account is similar to past trend, but total delinquent amounts that has been increasing since the pandemic has leveled off.

To ensure safety of the Walk-in Customers, regardless of their vaccine status, all CS team members are continuing to wear mask and practice safe distancing. We are monitoring the vaccination status of San Bernardino County Residents, other mutated variants, CalOSHA and government health agencies to determine the current safeguards and changes needed in the future.

## **VIII. REVENUE REPORT**

### **A. Revenue Summary**

Collected cash revenue is compiled and reconciled to the merchant account on a daily basis. Bank deposits are made daily and internal controls are reviewed regularly to ensure safeguarding of assets and proper recording of all transactions. Total revenue collected in September 2021 is \$3,685,000. Non-Rate Revenue is \$39,000; Utility Revenue is \$3,408,000 and Tax / Ambulance Revenue at \$238,000.

RWS collects Utility User Taxes and Ambulance Fees on behalf of the City of Rialto. The Utility User Tax (UUT) rates are based on the total billed amount, therefore the collection fluctuates as billed amounts change. The total UUT charges collected in September 2021 and September 2020 are \$232,000 and \$259,000 respectively. Ambulance Revenue is also collected on behalf of the City of Rialto totaling \$5,000 in September 2021 and \$5,000 in September 2020.

### **B. Non Rate Revenue - Extraterritorial Customers**

RWS bills the City of Fontana \$123,000 each month for extraterritorial sewer usage.

Colton Unified School District is in agreement with RWS to pay \$6,000 monthly for sewage connections based on enrollment rates provided each school year.

An extraterritorial agreement to provide sewer service was executed between the City of Rialto and the County of San Bernardino—County Service Area 70, Zone BL (Bloomington).

This housing development project generates extraterritorial sewer service revenue of \$12,000 per month.

**C. Non-Rate Revenue – Other**

Other revenue is generated by leasing space for cell towers to AT&T and Sprint at a currently contracted rate of \$1,700 each per month. Vertical Bridge also provides \$2,400 a month of cell tower generated Revenue.

RWS and the City secured an agreement with Rialto Bioenergy Facilities whereby they provide a subleased City property rental income of \$10,000 a month. In addition, Chino 2 Water Well Site yard is also being rented to MR Tudor, which generates \$500 in monthly revenues.

The City and San Bernardino Valley Municipal Water District have entered into a Brine Line Capacity Agreement on March 23, 2021. This agreement pertains to the use of its interest in the SARI Line and discharge of certain brine waste to the SARI Line exclusively from the operation of Rialto Bioenergy Facilities (Developer) within the City's boundaries. The revenue generated in this agreement consists of quarterly rent of \$37,500 along with the Fixed Pipeline Capacity Fee of \$3,300 per month and Fixed Treatment Plant Capacity Fee of \$3,300 per month. In addition, a variable fee of any discharge costs are also billed.

Liquid Environmental Solutions has provided F.O.G. recycling fees to RWS in the past, but this is on hold until the City can negotiate a new contract and acceptance protocol to protect the wastewater treatment plant.

The San Bernardino Valley Water District (SBVWD) reimburses RWS for water conservation programs provided to customers. A quarterly bill is delivered directly to them by RWS.

**D. Development Impact Fees**

Development Impact Fees ("DIF") are paid to the City of Rialto as various developments are completed in the City. As such, the City of Rialto receives monies from the various developments, which is then distributed to RWS. There was no remittance in September of 2021.

**E. Rialto Basin Water Rights and Leasing**

A Standby Water Lease Agreement between Fontana Union Water Company and Rialto is in effect. San Bernardino County is to pay Rialto \$60,000 per year for Administrative Fees, \$64,000 per year for Standby Charges and \$160,000 per year for Production Charges.

In addition, the County is also billed annually for Rialto Well #3's summertime electricity costs based on peak usage.

## F. Cash Collections by Payment Method – Rialto Water Services

Payment Method	Description	Transaction Count	SEPTEMBER 2021	%
Carrier Deposits	Cash deposits prepared per day for transport to Union Bank	21	\$ 102,100	2.79%
Remote Deposits	Scanned batches of checks payments made at the customer service counter (May 2021 includes \$443,000 of Property Tax payments)	21	325,460	8.91%
UB Bill	Batches of customer payments posted to customer accounts at Union Bank (EBOX)	21	363,635	9.95%
PAYMENTUS - IVR / Paymentus / Walk-in Credit Card payment	Customer payments by credit cards and ACH / eCheck payments through an Interactive Voice Response system using a touchtone phone. Payments originated from Merchant online service including One-time pay, auto-pay.	10,685	1,631,362	44.64%
Lockbox Deposits	Batches of customer payments mailed in to Union Bank's lockbox	21	1,190,814	32.59%
Pay Near Me	Cash payment service that allows customers to pay at a local 7-Eleven, CVS, or Family Dollar stores.	337	41,031	1.12%
<b>Total Revenue per Bank</b>			<b>\$ 3,654,402</b>	<b>100%</b>
Recon to RUA Recap:				
Adj detailed in RUA			31,076	
Prior mo. Correction				
<b>RUA increase in Cash</b>			<b>\$ 3,685,478</b>	

*Transaction Counts for Carrier Deposits, Remote Deposits, UB Bill Conc Service (EBOX), and Lockbox Deposits reflect number of batches deposited to the bank. Transaction counts for credit card POS, IVR, and Pay Near Me transactions are per number of customer payments. IVR payments are received and process by Paymentus on the day the transactions are made. General ledger are posted and accounted for the following day the payments are processed.*

**G. Payment Collection Method – Fiscal Year to Date**

	<b>Jul 2021</b>	<b>Aug 2021</b>	<b>Sept 2021</b>	<b>Total</b>	<b>%</b>
Carrier Deposits	\$ 95,492	\$ 100,024	\$ 102,100	\$ 297,616	2.66%
Remote Check Deposits	567,468	597,305	325,460	\$ 1,490,234	13.34%
UB Bill (EBOX)	376,693	340,169	363,635	\$ 1,080,497	9.67%
Paymentus, IVR, Credit Cards	1,604,275	1,547,779	1,631,362	\$ 4,783,416	42.82%
Lockbox Deposits	1,186,090	1,021,746	1,190,814	\$ 3,398,649	30.42%
Pay Near Me	40,910	38,492	41,031	\$ 120,433	1.08%
<b>Total Revenue to Bank</b>	<b>\$ 3,870,928</b>	<b>\$ 3,645,515</b>	<b>\$ 3,654,402</b>	<b>\$11,170,846</b>	<b>100.00%</b>
NSF	(25,056)	(25,056)	(14,151)	(64,264)	
<b>Net deposits</b>	<b>\$ 3,845,872</b>	<b>\$ 3,620,459</b>	<b>\$ 3,640,251</b>	<b>\$11,106,582</b>	

**H. Cash Collections on Behalf of the City of Rialto-Prior Year Comparison**

	<b>Sept 2021</b>	<b>Sept 2020</b>	<b>Variance</b>
UUT Water	\$ 85,091	\$ 94,712	\$ (9,622)
UUT Sewer	147,372	164,166	(16,795)
Perchlorate	-	-	-
Ambulance	5,468	5,728	(260)
<b>Total</b>	<b>\$ 237,931</b>	<b>\$ 264,607</b>	<b>\$ (26,676)</b>

**I. Non-Rate Revenue + Utility Revenue Collections Prior Year Comparison**

	<b>Sept 2021</b>	<b>Sept 2020</b>	<b>Variance</b>
Non-Rate / Extra Territorial Revenue	\$ 39,031	\$ 221,040	\$ (182,009)
Utility Revenue	\$ 3,408,516	\$ 3,767,573	\$ (359,057)
<b>Total</b>	<b>\$ 3,447,547</b>	<b>\$ 3,988,613</b>	<b>\$ (541,066)</b>

**J. Non-Rate Revenue + Utility Revenue Collected Fiscal Year-to-Date**

	Jul 2021	Aug 2021	Sept 2021	Total
<b>Non-Rate Revenue</b>				
Cell Tower / Sublease	56,279	2,000	14,563	72,842
Interest Income	-	1,875	-	1,875
NRR-FOG	-	-	-	-
Extra Terr-Water	-	-	-	-
Extra Terr- Sewage	130,700	297,731	18,200	446,631
Water Meter Lost/Damaged/Replace	31,118	3,227	3,118	37,463
Misc Fees - New Occ, Same Day Svc	3,381	3,035	2,709	9,124
NSF	361	476	442	1,278
DIF - Wastewater Connection		-		-
Sewer Bad Debt Collection Fees		-		-
Sewer Cash Over/Short	149	-		149
<b>Total Non-Rate Revenue</b>	<b>\$ 221,988</b>	<b>\$ 308,344</b>	<b>\$ 39,031</b>	<b>569,363</b>
<b>Utility Revenue</b>				
Water Penalty	-		19	19
Sewer Penalty	-		32	32
Turf Removal Rebate	-			-
Hi Eff Toilet/Washer Rebates	-	(1,130)		(1,130)
Senior Disc - Water	-			-
Senior Disc - Sewer	-			-
Water Contract	-			-
Water Deposits Paid	8,357		1,227	9,584
Water Deposits Billed	10,067	23,103	16,459	49,628
Hydrant Deposits	-	721	-	721
Sewer Deposits Paid	5,974	995	206	7,175
Sewer Deposits Billed	11,442	19,163	12,618	43,222
Water	1,173,318	1,172,772	1,324,829	3,670,918
Sewer	1,972,728	1,936,675	2,021,455	5,930,858
Unapplied Credits	82,309	25,429	31,563	139,301
Bad Debt Sewer	-	8,394	86	8,480
Bad Debt Water	-	-	23	23
<b>Total Utility Revenue</b>	<b>\$ 3,264,194</b>	<b>\$ 3,186,122</b>	<b>\$ 3,408,516</b>	<b>\$ 9,858,832</b>
<b>Total Non-Rate + Utility Rev.</b>	<b>3,486,182</b>	<b>3,494,465</b>	<b>3,447,547</b>	<b>10,428,195</b>

**K. Increase in Cash Collections and Fund Distribution—Prior Year Comparison**

	Increase to Cash per CIS	Adjustments Required to GL Cash	Fund 660- Sewer	Fund 670- Water	Total Cash Per GL	Adjustments To Match RUA to Bank	Cash/CC/Cks Deposit To Bank
<b>Sept 2021</b>	3,685,478	12,355	2,155,327	1,517,795	3,685,478	(31,076)	<b>3,654,402</b>
<b>Sept 2020</b>	4,253,220	86,711	2,547,591	1,618,917	4,253,220	2,936	<b>4,256,156</b>

**L. Non-Incode Customer Accounts Receivable Aging**

Name	Total as of 9/30/2021	Current	31-60 days	61-90 days	>90 days
AT&T - Easton	\$ (8,640)				(8,640)
CITY OF FONTANA	123,847	123,847			
Colton Unified School District	-				
County of San Bernardino-CSA 70 BL	-				
MR Tudor	2,500	500	500	500	1,000
Rialto BioEnergy Facilities	26,359	26,359			
Sprint-Nextel	4,838				4,838
San Bernardino Co Waste System Div	412,956	412,956			
SB Valley Mun Water District	-				
Vertical Bridge Holdco, LLC (CIG)	2,489	2,489			
<b>Grand Total</b>	<b>\$ 564,348</b>	<b>\$ 566,150</b>	<b>\$ 500</b>	<b>\$ 500</b>	<b>\$ (2,802)</b>

**AT&T** makes annual payment. The credit balance will be applied to the bill each coming month.

**City of Fontana** is current with its obligations.

**Colton Unified School District** is current with its obligations

**County of San Bernardino—CSA 70 BL (Bloomington):** A monthly billing for a total of 197 EDU for residential and commercial sewer connections is being billed to the County. These connections generate approximately \$12,000 of monthly extraterritorial revenue. The customer is current with its obligations.

**Rialto Bioenergy Facilities** The current balance is subsequently received in October.

**Liquid Environmental:** There have not been F.O.G. services rendered and there is no balance due from the vendor.

**San Bernardino Valley Municipal Water District** is billed quarterly for rebate submitted within that period. The customer has no outstanding balance.

**Vertical Bridge Holdco, LLC and Sprint:** Vertical Bridge is current with its rent. Sprint has been contacted for open Invoices.

**San Bernardino County Waste System Division** The balance reflects current billing for Water Rights and SCE energy usage reimbursement.

**MR Tudor** is being contacted for the unpaid Rent.