



# Crown Castle / DISH network

Prepared for:



**CITY OF  
RIALTO**

## Introduction:



Dear Board Members of the City of Rialto, CA

In order to better serve the public and minimize the amount of towers in an area where a Lease is located. DISH Network plans to modify the equipment at the telecommunication facility we currently have in a lease agreement with you as our lessor. The modifications will not alter the character or use of the site nor will it change the nature of Crown Castle's occupancy of the site.

THE CITY OF RIALTO, CA requires Landowners Authorization for applications related to Land Use, zoning and/or building permits. Upon reaching an agreement and full understanding during the course of your conversations with **Joan Javier** for the use of additional land for DISH'S placement at our Cellular Site located at **Birdsall Park**. Our Real Estate division will be in contact with the board members to obtain additional authorizations, the process of execution of documents and other material aspects for the DISH install to commence.

Thank you for your continued cooperation with Crown Castle.

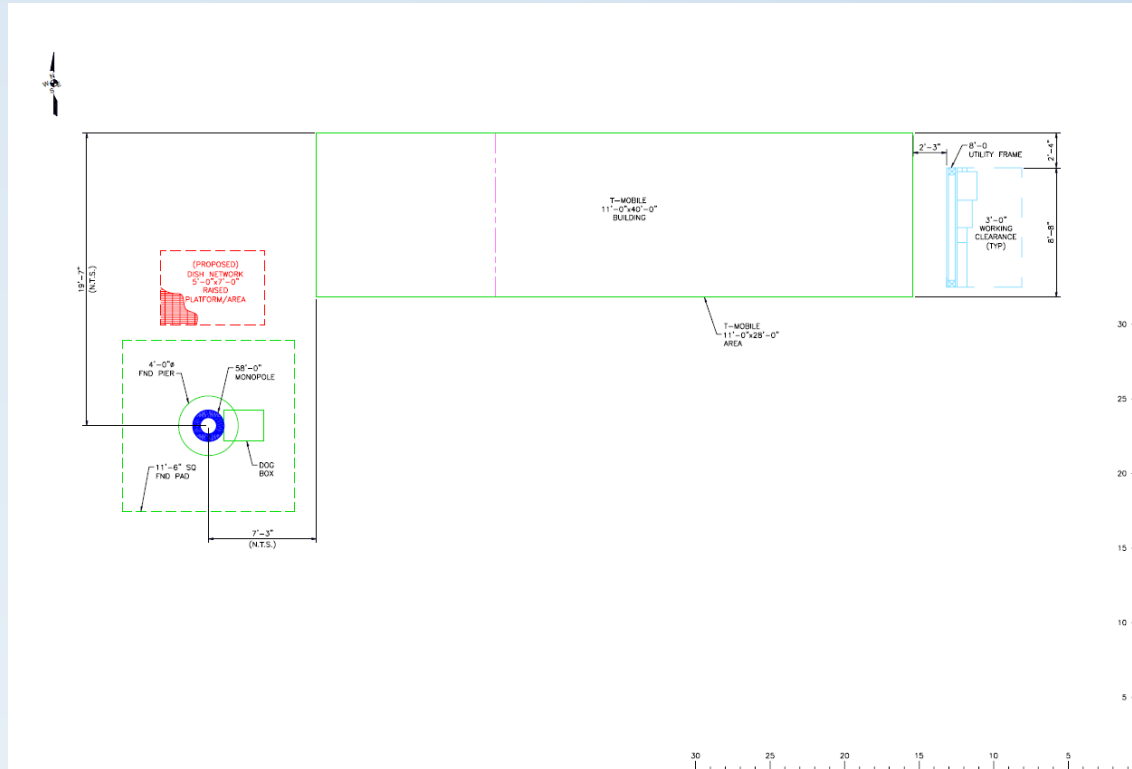


## Our Proposal:

- Lease area:
  - We are proposing to amend the existing to lease area to add 48 sq ft to accommodate DISH (first time install here).
- Proposed rent:
  - Based on the current rent, that space would run \$500/mo and it will increase with the DISH license at 2.8% per annum commencing on 2028.
- Additional terms:
  - \$1,000.00 as a signing bonus to offset the increases that wouldn't happen until 2028

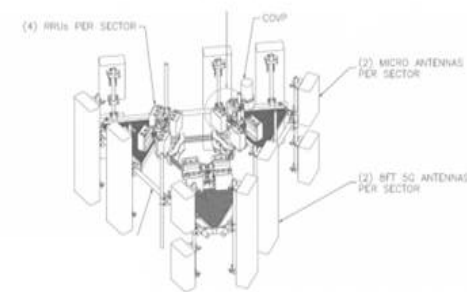


- Proposed Location and Equipment Design:



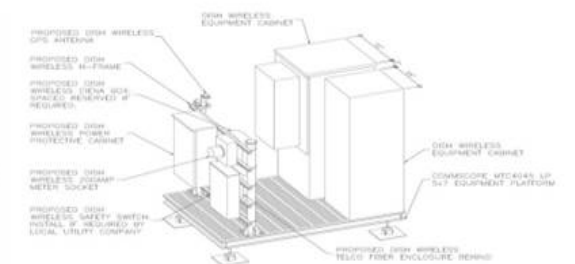
### Design Guidelines - Loading

### Tower Top Equipment



**\*Illustrative View\***

### Ground Equipment



Tower Equipment		
Item(s)	Weight (pounds)	Dimensions
8' Panel Antenna	149	96"x22"x10"
6' Panel Antenna	111	72"x22"x10"
Micro Antenna	50	36"x20"x10"
RRU (Radio Unit)	50	30"x20"x12"
OVP	32	16"x14"x8"

Ground Equipment		
Item(s)	Weight (pounds)	Dimensions
Cabinet #1	490	74"x32"x32"
Cabinet #2	490	74"x28"x32"
Internal Cabinet Equipment	175	N/A
Cabinet Batteries (4)	550	Lithium
Platform plus H-Frame	625	5'x7'
H-Frame equipment	150	N/A
<b>Total Ground Weight</b>	<b>2480</b>	

- Areal View:





**May I Answer  
Your  
Questions?**